

DIAMOND TESTING, LLC
 P.O. Box 157
 HOISINGTON, KANSAS 67544-0157
 (800) 542-7313

ON LOCATION @ 10:00 AM
 TIME ON: 1:15 PM
 TIME OFF: 9:20 PM

DRILL-STEM TEST TICKET

FILE: EATON TRUST 2 DSTZ

Company ANDERSON ENERGY INC Lease & Well No. EATON TRUST #2

Contractor SOUTHWIND DRILLING #6 Charge to ANDERSON ENERGY INC

Elevation 2157' KB Formation LANSING "BTHRU" F Effective Pay _____ Ft. Ticket No. F263

Date 3-30-14 Sec 18 Twp 10 S Range 20 W County ROOKS State KANSAS

Test Approved By Roger Martin Diamond Representative JAKE FAHRENBRUCH

Formation Test No. TWO Interval Tested from 3470 ft. to 3541 ft. Total Depth 3541 ft.

Packer Depth 3465 ft. Size 6 3/4 in. Packer depth _____ ft. Size 6 3/4 in.

Packer Depth 3470 ft. Size 6 3/4 in. Packer depth _____ ft. Size 6 3/4 in.

Depth of Selective Zone Set _____

Top Recorder Depth (Inside) 3448 ft. Recorder Number 5951 Cap. 5K P.S.I.

Bottom Recorder Depth (Outside) 3475 ft. Recorder Number 5584 Cap. 5K P.S.I.

Below Straddle Recorder Depth _____ ft. Recorder Number _____ Cap. _____ P.S.I.

Mud Type CHEMICAL Viscosity 60 LCM:1# Drill Collar Length 0 ft. I.D. 2 1/4 in.

Weight 9.1 Water Loss 7.0 cc. Weight Pipe Length 0 ft. I.D. 2 7/8 in.

Chlorides 2400 P.P.M. Drill Pipe Length 3437 ft. I.D. 3 1/2 in.

Jars: Make STERLING Serial Number #5 (J.S.J.) Test Tool Length 33 ft. Tool Size 3 1/2-IF in.

Did Well Flow? NO Reversed Out NO Anchor Length 71 ft. Size 4 1/2-FH in.

Main Hole Size 7 7/8 Tool Joint Size 4 1/2 in. Surface Choke Size 5/8 in.

Blow: 1st Open: WEAK BLOW, INCREASED FROM SURFACE TO 4 1/2". NO BLOWBACK.

2nd Open: WEAK BLOW, INCREASED FROM SURFACE TO 6". NO BLOWBACK.

Recovered 1 ft. of CLEAN OIL 100% OIL

Recovered 40 ft. of SOSIM 1% OIL 99% MUD

Recovered 65 ft. of SOC HWCM 5% OIL 40% WTR 55% MUD

Recovered _____ ft. of CHLORIDES: 21,000 PPM

Recovered _____ ft. of PH: 8.0

Recovered _____ ft. of RW: .19-2 @ 70°F

Remarks: TOOL SAMPLE: OCHMCW 10%, 60%, 30%

TOTAL RECOVERED FLUID: 106'

Price Job
Other Charges <u>JARS \$5.00</u>
Insurance
<u>316 M.B.T. PRAT</u>
Total

Time Set Packer(s) 2:54 AM Time Started Off Bottom 6:39 AM Maximum Temperature 99°F

Initial Hydrostatic Pressure..... (A) 1635 P.S.I.

Initial Flow Period... 2:59-3:24 Minutes 30 (B) 8 P.S.I. to (C) 29 P.S.I.

Initial Closed In Period... 3:24-4:09 Minutes 45 (D) 460 P.S.I.

Final Flow Period... 4:09-5:09 Minutes 60 (E) 30 P.S.I. to (F) 56 P.S.I.

Final Closed In Period... 5:09-6:39 Minutes 90 (G) 454 P.S.I. THANKS

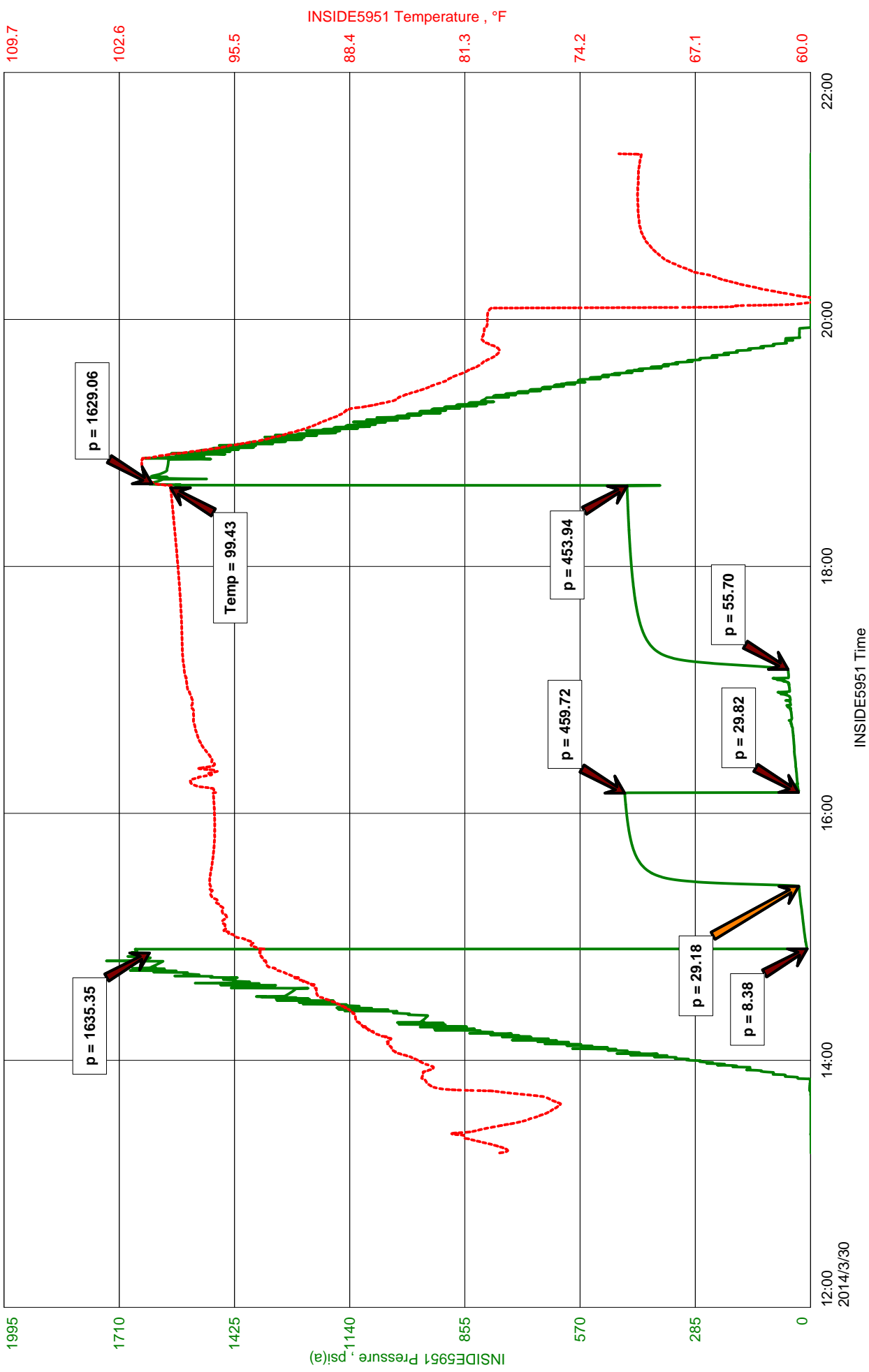
Final Hydrostatic Pressure..... (H) 1629 P.S.I. Jake Fahrenbruch

Diamond Testing, LLC shall not be liable for damages of any kind to the property or personnel of the one for whom a test is made or for any loss suffered or sustained, directly or indirectly, through the use of its equipment, or its statement or opinion concerning the result of any test. Tools lost or damaged in the hole shall be paid for at cost by the party for whom the test is made.

Anderson Energy Inc
DST #2 Lansing "B thru F" 3470'-3541'
Start Test Date: 2014/03/30
Final Test Date: 2014/03/30

Eaton Trust #2
Formation: Lansing "B thru F" 3470'-3541'
Job Number: F263

Eaton Trust #2





Diamond Testing General Report

**JAKE
FAHRENBRUCH - TESTER
Cell: (620) 282-8977**

P.O. Box 157
Hoisington KS 67544
Office: (800) 542-7313

General Information

Company Name	Anderson Energy Inc	Well Name	Eaton Trust #2
Well Operator	Anderson Energy Inc	Unique Well ID	DST #2 Lansing "B thru F" 3470'-3541'
Contact	Tom Anderson	Surface Location	Sec 18-10s-20w-Rooks Co.-KS
Site Contact	Roger Martin	Test Unit	#5
Field		Pool	
Well Type	Vertical	Job Number	F263
Prepared By	Jake Fahrenbruch	Qualified By	Roger Martin

Test Information

Test Type	BH w/J&SJ	Test Purpose	Initial Test
Formation	Lansing "B thru F" 3470'-3541'	Gauge Name	INSIDE5951
Start Test Date	2014/03/30	Start Test Time	13:15:00
Final Test Date	2014/03/30	Final Test Time	21:20:00

Test Results

30 min initial flow:	Weak blow, increased from surface to 4 1/2".
45 min initial shut-in:	No blowback.
60 min final flow:	Weak blow, increased from surface to 6".
90 min final shut-in:	No blowback.

RECOVERED:

1'	Clean Oil	100% oil
40'	SOSM	1% oil, 99% mud
65'	SOCHWCM	5% oil, 40% wtr, 55% mud
----	Chlorides:	21,000 ppm
----	PH:	8.0
----	RW:	.19 ohm @ 70 deg f
----	BHT:	99 deg f
----	Tool Sample:	OCHMCW 10% oil, 60% wtr, 30% mud
----	Total Recovered Fluid:	106'
----	Initial Hydrostatic Pressure:	1635 psi
----	Initial Flow Pressures:	8-29 psi
----	Initial Shut-In Pressure:	460 psi
----	Final Flow Pressures:	30-56 psi
----	Final Shut-In Pressure:	454 psi
----	Final Hydrostatic Pressure:	1629 psi

Thanks!