



**TRILOBITE  
TESTING, INC**

# DRILL STEM TEST REPORT

Edison Operating Co.

**19-34s-31w Seward Ks**

8100 E.22ND St. N. Bldg.1900  
Wichita Ks.67226

**Eva Jean#1-19**

Job Ticket: 51889

**DST#: 1**

ATTN: Adam Nighswonger

Test Start: 2014.03.18 @ 05:19:14

## GENERAL INFORMATION:

Formation: **Toronto**

Deviated: No Whipstock: ft (KB)

Time Tool Opened: 07:37:29

Time Test Ended: 11:53:59

Test Type: Conventional Bottom Hole (Initial)

Tester: Gary Pevoteaux

Unit No: 56

**Interval: 4386.00 ft (KB) To 4416.00 ft (KB) (TVD)**

Reference Elevations: 2730.00 ft (KB)

Total Depth: 4416.00 ft (KB) (TVD)

2720.00 ft (CF)

Hole Diameter: 7.88 inches Hole Condition: Fair

KB to GR/CF: 10.00 ft

**Serial #: 8352 Inside**

Press@RunDepth: 51.71 psig @ 4387.00 ft (KB)

Capacity: 8000.00 psig

Start Date: 2014.03.18

End Date:

2014.03.18

Last Calib.: 2014.03.18

Start Time: 05:19:19

End Time:

11:53:58

Time On Btm: 2014.03.18 @ 07:36:44

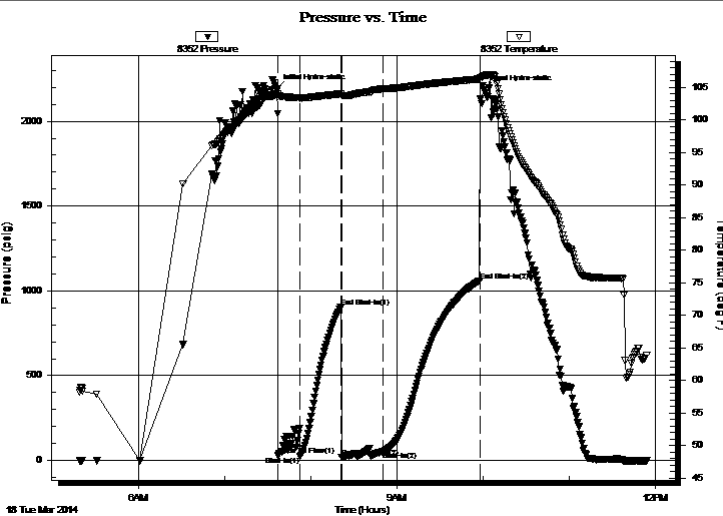
Time Off Btm: 2014.03.18 @ 10:00:29

TEST COMMENT: IF:Weak blow . 1/4" decreasing.

IS:No blow .

FF:No blow .

FS:No blow .



## PRESSURE SUMMARY

Time (Min.)	Pressure (psig)	Temp (deg F)	Annotation
0	2192.86	104.02	Initial Hydro-static
1	29.97	103.54	Open To Flow (1)
16	25.10	103.32	Shut-In(1)
45	905.97	103.97	End Shut-In(1)
45	17.37	103.70	Open To Flow (2)
74	51.71	104.75	Shut-In(2)
141	1061.19	106.28	End Shut-In(2)
144	2185.09	106.77	Final Hydro-static

## Recovery

Length (ft)	Description	Volume (bbl)
12.00	Drig.mud .(cuttings & hulls)	0.17

## Gas Rates

	Choke (inches)	Pressure (psig)	Gas Rate (Mcf/d)



**TRILOBITE  
TESTING, INC**

# DRILL STEM TEST REPORT

**FLUID SUMMARY**

Edison Operating Co.

**19-34s-31w Seward Ks**

8100 E.22ND St. N. Bldg.1900  
Wichita Ks.67226

**Eva Jean#1-19**

Job Ticket: 51889

**DST#: 1**

ATTN: Adam Nighswonger

Test Start: 2014.03.18 @ 05:19:14

## Mud and Cushion Information

Mud Type: Gel Chem

Cushion Type:

Oil API:

deg API

Mud Weight: 9.00 lb/gal

Cushion Length:

ft

Water Salinity:

6100 ppm

Viscosity: 51.00 sec/qt

Cushion Volume:

bbbl

Water Loss: 40.95 in<sup>3</sup>

Gas Cushion Type:

Resistivity: 0.00 ohm.m

Gas Cushion Pressure:

psig

Salinity: 6100.00 ppm

Filter Cake: 0.20 inches

## Recovery Information

Recovery Table

Length ft	Description	Volume bbl
12.00	Drig.mud .(cuttings & hulls)	0.168

Total Length: 12.00 ft      Total Volume: 0.168 bbl

Num Fluid Samples: 0

Num Gas Bombs: 0

Serial #: none

Laboratory Name:

Laboratory Location:

Recovery Comments: Sampler Data:1100 ML. of mud w/cuttings & hulls. No oder.98 psi

