



**TRILOBITE
TESTING, INC.**

DRILL STEM TEST REPORT

Shakespeare Oil
202 West Main St.
Salem, IL
62881
ATTN: Mark Herndon

36-16s-34w Scott, Ks

Janzen #4-36

Job Ticket: 56299

DST#: 1

Test Start: 2014.03.24 @ 14:20:33

GENERAL INFORMATION:

Formation: **Marmaton**

Deviated: No Whipstock: 0.00 ft (KB)

Time Tool Opened: 17:27:33

Time Test Ended: 23:40:03

Test Type: Conventional Bottom Hole (Initial)

Tester: Shane McBride

Unit No: 55

Interval: 4417.00 ft (KB) To 4482.00 ft (KB) (TVD)

Total Depth: 4482.00 ft (KB) (TVD)

Hole Diameter: 7.88 inches Hole Condition: Fair

Reference Elevations: 3109.00 ft (KB)

3097.00 ft (CF)

KB to GR/CF: 12.00 ft

Serial #: 6771

Inside

Press @ Run Depth: 58.88 psig @ 4418.00 ft (KB)

Start Date: 2014.03.24

End Date:

2014.03.24

Start Time: 14:20:33

End Time:

23:22:03

Capacity: 8000.00 psig

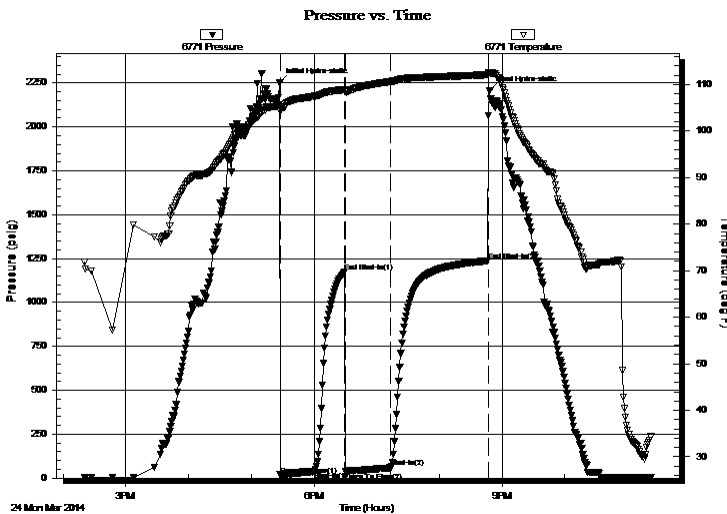
Last Calib.: 2014.03.24

Time On Btm: 2014.03.24 @ 17:27:18

Time Off Btm: 2014.03.24 @ 20:48:03

TEST COMMENT: B.O.B. in 28 min
No return
B.O.B. in 27 min.
Surface return in 8 min. built to 1/2" in, died in 30 min.

PRESSURE SUMMARY



Time (Min.)	Pressure (psig)	Temp (deg F)	Annotation
0	2252.19	105.68	Initial Hydro-static
1	19.18	104.30	Open To Flow (1)
33	37.38	107.46	Shut-In(1)
62	1174.04	108.90	End Shut-In(1)
63	35.65	108.47	Open To Flow (2)
107	58.88	110.65	Shut-In(2)
200	1238.57	112.10	End Shut-In(2)
201	2206.82	112.61	Final Hydro-static

Recovery

Length (ft)	Description	Volume (bbl)
45.00	c g o 3%g 97%o	0.63
45.00	s g o c m 5%g 20%o 75%m	0.63
0.00	330' gas in pipe	0.00

Gas Rates

	Choke (inches)	Pressure (psig)	Gas Rate (Mcf/d)



**TRILOBITE
TESTING, INC.**

DRILL STEM TEST REPORT

FLUID SUMMARY

Shakespeare Oil

36-16s-34w Scott, Ks

202 West Main St.
Salem, IL
62881

Janzen #4-36

Job Ticket: 56299

DST#: 1

ATTN: Mark Herndon

Test Start: 2014.03.24 @ 14:20:33

Mud and Cushion Information

Mud Type: Gel Chem

Cushion Type:

Oil API:

34 deg API

Mud Weight: 9.00 lb/gal

Cushion Length:

ft

Water Salinity:

0 ppm

Viscosity: 55.00 sec/qt

Cushion Volume:

bbbl

Water Loss: 7.96 in³

Gas Cushion Type:

Resistivity: 0.00 ohm.m

Gas Cushion Pressure:

psig

Salinity: 3400.00 ppm

Filter Cake: 1.00 inches

Recovery Information

Recovery Table

Length ft	Description	Volume bbbl
45.00	c g o 3%g 97%o	0.631
45.00	s g o c m 5%g 20%o 75%m	0.631
0.00	330' gas in pipe	0.000

Total Length: 90.00 ft Total Volume: 1.262 bbl

Num Fluid Samples: 0

Num Gas Bombs: 0

Serial #:

Laboratory Name:

Laboratory Location:

Recovery Comments:

Serial #: 6771

Inside

Shakespeare Oil

Janzen #4-36

DST Test Number: 1

