



**TRILOBITE TESTING, INC**

# DRILL STEM TEST REPORT

Shakespeare Oil  
 202 West Main St.  
 Salem, IL  
 62881  
 ATTN: Mark Herndon

**36-16s-34w Scott, Ks**

**Janzen #4-36**

Job Ticket: 56326

**DST#: 3**

Test Start: 2014.03.27 @ 01:45:35

## GENERAL INFORMATION:

Formation: **Johnson**

Deviated: No Whipstock: 0.00 ft (KB)

Time Tool Opened: 03:58:20

Time Test Ended: 08:25:05

Test Type: Conventional Bottom Hole (Reset)

Tester: Shane McBride

Unit No: 55

**Interval: 4656.00 ft (KB) To 4744.00 ft (KB) (TVD)**

Total Depth: 4744.00 ft (KB) (TVD)

Hole Diameter: 7.88 inches Hole Condition: Fair

Reference Elevations: 3109.00 ft (KB)

3097.00 ft (CF)

KB to GR/CF: 12.00 ft

**Serial #: 6771 Inside**

Press@RunDepth: 37.59 psig @ 4657.00 ft (KB)

Start Date: 2014.03.27

End Date:

2014.03.27

Start Time: 01:45:35

End Time:

08:06:05

Capacity: 8000.00 psig

Last Calib.: 2014.03.27

Time On Btm: 2014.03.27 @ 03:58:05

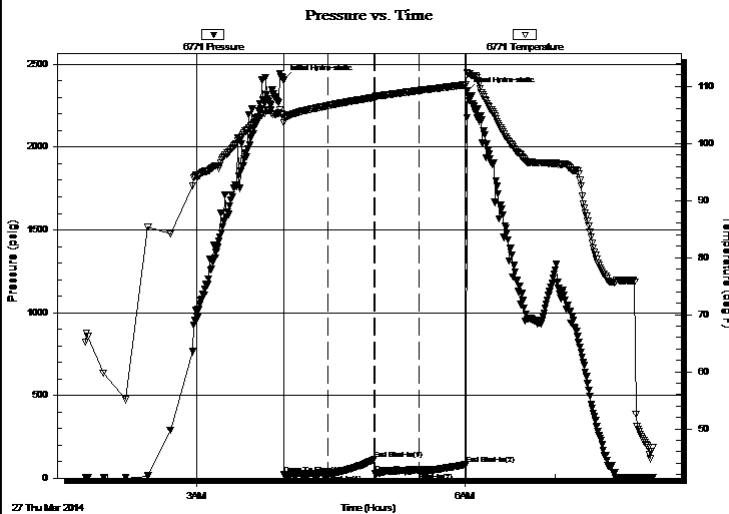
Time Off Btm: 2014.03.27 @ 06:01:20

TEST COMMENT: 1/2" in blow died in 28 min.

No return

No blow

No return



## PRESSURE SUMMARY

Time (Min.)	Pressure (psig)	Temp (deg F)	Annotation
0	2405.55	104.97	Initial Hydro-static
1	21.40	103.60	Open To Flow (1)
30	22.91	106.59	Shut-In(1)
61	114.43	108.05	End Shut-In(1)
62	26.65	108.09	Open To Flow (2)
91	37.59	109.24	Shut-In(2)
123	81.80	110.25	End Shut-In(2)
124	2338.25	112.36	Final Hydro-static

## Recovery

Length (ft)	Description	Volume (bbl)
5.00	mud 100% m	0.07

## Gas Rates

Choke (inches)	Pressure (psig)	Gas Rate (Mcf/d)

\* Recovery from multiple tests



**TRILOBITE  
TESTING, INC**

# DRILL STEM TEST REPORT

**FLUID SUMMARY**

Shakespeare Oil

**36-16s-34w Scott, Ks**

202 West Main St.  
Salem, IL  
62881

**Janzen #4-36**

Job Ticket: 56326

**DST#: 3**

ATTN: Mark Herndon

Test Start: 2014.03.27 @ 01:45:35

## Mud and Cushion Information

Mud Type: Gel Chem

Cushion Type:

Oil API:

0 deg API

Mud Weight: 9.00 lb/gal

Cushion Length:

ft

Water Salinity:

0 ppm

Viscosity: 61.00 sec/qt

Cushion Volume:

bbbl

Water Loss: 8.78 in<sup>3</sup>

Gas Cushion Type:

Resistivity: 0.00 ohm.m

Gas Cushion Pressure:

psig

Salinity: 8000.00 ppm

Filter Cake: 1.00 inches

## Recovery Information

Recovery Table

Length ft	Description	Volume bbl
5.00	mud 100%m	0.070

Total Length: 5.00 ft      Total Volume: 0.070 bbl

Num Fluid Samples: 0

Num Gas Bombs: 0

Serial #:

Laboratory Name:

Laboratory Location:

Recovery Comments:

Serial #: 6771

Inside

Shakespeare Oil

Janzen #4-36

DST Test Number: 3

