



## DRILL STEM TEST REPORT

Prepared For: **Shelby Resources LLC.**

2717 Canal Blvd. Hays  
Kansas 67601

ATTN: Jeremy Schwartz

### **French 1-27**

#### **27-21s-17w-Pawnee**

Start Date: 2014.04.21 @ 01:45:00

End Date: 2014.04.21 @ 08:31:30

Job Ticket #: 18315                      DST #: 1

Superior Testers Enterprises LLC  
PO Box 138 Great Bend KS 67530  
1-800-792-6902

Printed: 2014.04.21 @ 21:46:13



# DRILL STEM TEST REPORT

Shelby Resources LLC.

**27-21s-17w-Pawnee**

2717 Canal Blvd. Hays  
Kansas 67601

**French 1-27**

Job Ticket: 18315

**DST#: 1**

ATTN: Jeremy Schwartz

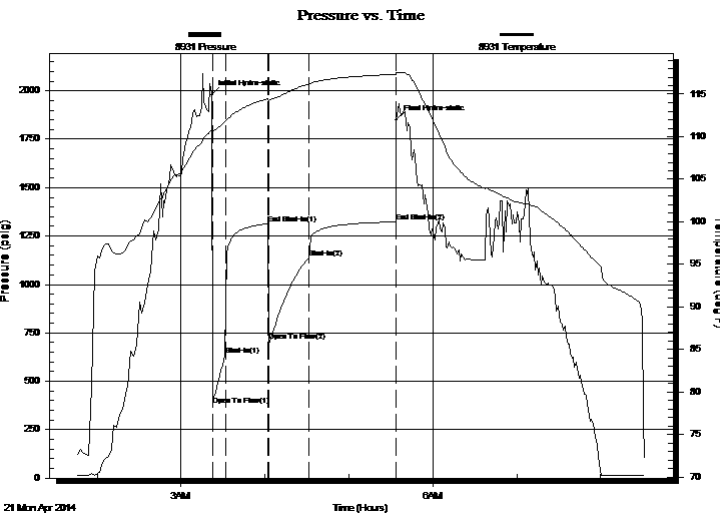
Test Start: 2014.04.21 @ 01:45:00

## GENERAL INFORMATION:

Formation: **Arbuckle**  
 Deviated: No Whipstock: ft (KB)  
 Time Tool Opened: 03:22:30  
 Time Test Ended: 08:31:30  
 Interval: **3970.00 ft (KB) To 3981.00 ft (KB) (TVD)**  
 Total Depth: 3981.00 ft (KB) (TVD)  
 Hole Diameter: 7.88 inches Hole Condition: Fair  
 Test Type: Conventional Bottom Hole (Initial)  
 Tester: Dustin Ellis  
 Unit No: 3315-Great Bend-60  
 Reference Elevations: 2045.00 ft (KB)  
 2032.00 ft (CF)  
 KB to GR/CF: 13.00 ft

**Serial #: 8931 Outside**  
 Press@RunDepth: 1138.77 psig @ 3976.00 ft (KB) Capacity: 5000.00 psig  
 Start Date: 2014.04.21 End Date: 2014.04.21 Last Calib.: 2014.04.21  
 Start Time: 01:45:00 End Time: 08:31:30 Time On Btm: 2014.04.21 @ 03:22:00  
 Time Off Btm: 2014.04.21 @ 05:34:00

**TEST COMMENT:** 1st Open 10 minutes Strong building blow built to the bottom of a 5 gallon bucket of water in 1.5 minutes.  
 1st Shut in 30 minutes No blow back  
 2nd Open 30 minutes Strong building blow built to the bottom of a 5 gallon bucket of water in 1.5 minutes.  
 2nd Shut in 60 minutes No blow back



## PRESSURE SUMMARY

Time (Min.)	Pressure (psig)	Temp (deg F)	Annotation
0	1979.46	110.91	Initial Hydro-static
1	377.85	110.58	Open To Flow (1)
10	636.75	111.73	Shut-In(1)
40	1313.43	114.47	End Shut-In(1)
41	709.56	114.24	Open To Flow (2)
70	1138.77	116.22	Shut-In(2)
132	1323.25	117.35	End Shut-In(2)
132	1849.29	117.55	Final Hydro-static

## Recovery

Length (ft)	Description	Volume (bbl)
2363.00	Water 100%	29.76
0.00	Chlorides 46,000-.3ohms@56degrees	0.00

## Gas Rates

	Choke (inches)	Pressure (psig)	Gas Rate (Mcf/d)



# DRILL STEM TEST REPORT

Shelby Resources LLC.

**27-21s-17w-Pawnee**

2717 Canal Blvd. Hays  
Kansas 67601

**French 1-27**

Job Ticket: 18315

**DST#: 1**

ATTN: Jeremy Schwartz

Test Start: 2014.04.21 @ 01:45:00

## GENERAL INFORMATION:

Formation: **Arbuckle**

Deviated: No Whipstock: ft (KB)

Time Tool Opened: 03:22:30

Time Test Ended: 08:31:30

Test Type: Conventional Bottom Hole (Initial)

Tester: Dustin Ellis

Unit No: 3315-Great Bend-60

**Interval: 3970.00 ft (KB) To 3981.00 ft (KB) (TVD)**

Reference Elevations: 2045.00 ft (KB)

Total Depth: 3981.00 ft (KB) (TVD)

2032.00 ft (CF)

Hole Diameter: 7.88 inches Hole Condition: Fair

KB to GR/CF: 13.00 ft

**Serial #: 6838**

**Inside**

Press@RunDepth: 1324.68 psig @ 3976.00 ft (KB)

Capacity: 5000.00 psig

Start Date: 2014.04.21

End Date:

2014.04.21

Last Calib.:

2014.04.21

Start Time:

01:45:00

End Time:

08:32:00

Time On Btm:

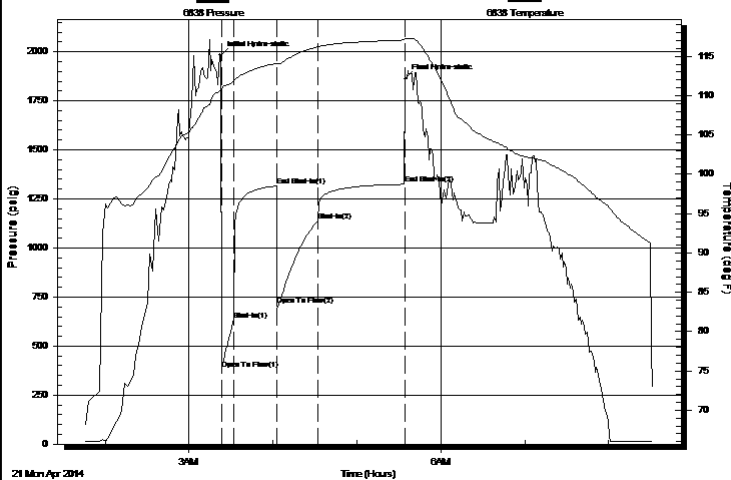
2014.04.21 @ 03:22:30

Time Off Btm:

2014.04.21 @ 05:34:30

**TEST COMMENT:** 1st Open 10 minutes Strong building blow built to the bottom of a 5 gallon bucket of water in 1.5 minutes.  
1st Shut in 30 minutes No blow back  
2nd Open 30 minutes Strong building blow built to the bottom of a 5 gallon bucket of water in 1.5 minutes.  
2nd Shut in 60 minutes No blow back

Pressure vs. Time



## PRESSURE SUMMARY

Time (Min.)	Pressure (psig)	Temp (deg F)	Annotation
0	1981.64	110.78	Initial Hydro-static
1	383.80	110.62	Open To Flow (1)
10	631.16	111.83	Shut-In(1)
40	1315.46	114.13	End Shut-In(1)
41	710.07	114.03	Open To Flow (2)
70	1138.20	116.21	Shut-In(2)
132	1324.68	117.09	End Shut-In(2)
132	1861.06	117.21	Final Hydro-static

## Recovery

Length (ft)	Description	Volume (bbl)
2363.00	Water 100%	29.76
0.00	Chlorides 46,000-.3ohms@56degrees	0.00

## Gas Rates

	Choke (inches)	Pressure (psig)	Gas Rate (Mcf/d)



# DRILL STEM TEST REPORT

TOOL DIAGRAM

Shelby Resources LLC.

**27-21s-17w-Pawnee**

2717 Canal Blvd. Hays  
Kansas 67601

**French 1-27**

Job Ticket: 18315

**DST#: 1**

ATTN: Jeremy Schwartz

Test Start: 2014.04.21 @ 01:45:00

## Tool Information

Drill Pipe:	Length: 3586.00 ft	Diameter: 3.80 inches	Volume: 50.30 bbl	Tool Weight: 2000.00 lb
Heavy Wt. Pipe:	Length: 0.00 ft	Diameter: 0.00 inches	Volume: 0.00 bbl	Weight set on Packer: 20000.00 lb
Drill Collar:	Length: 371.45 ft	Diameter: 2.25 inches	Volume: 1.83 bbl	Weight to Pull Loose: 890000.0 lb
			<u>Total Volume: 52.13 bbl</u>	Tool Chased 0.00 ft
Drill Pipe Above KB:	15.45 ft			String Weight: Initial 78000.00 lb
Depth to Top Packer:	3970.00 ft			Final 88000.00 lb
Depth to Bottom Packer:	ft			
Interval between Packers:	11.00 ft			
Tool Length:	39.00 ft			
Number of Packers:	2	Diameter: 6.75 inches		

Tool Comments:

Tool Description	Length (ft)	Serial No.	Position	Depth (ft)	Accum. Lengths
Shut In Tool	5.00			3947.00	
Hydraulic tool	5.00			3952.00	
Jars	6.00			3958.00	
Safety Joint	2.00			3960.00	
Top Packer	5.00			3965.00	
Packer	5.00			3970.00	28.00 Bottom Of Top Packer
Perforations	6.00			3976.00	
Recorder	0.00	6838	Inside	3976.00	
Recorder	0.00	8931	Outside	3976.00	
Bull Plug	5.00			3981.00	11.00 Anchor Tool
<b>Total Tool Length:</b>	<b>39.00</b>				



# DRILL STEM TEST REPORT

## FLUID SUMMARY

Shelby Resources LLC.

**27-21s-17w-Pawnee**

2717 Canal Blvd. Hays  
Kansas 67601

**French 1-27**

Job Ticket: 18315

**DST#: 1**

ATTN: Jeremy Schwartz

Test Start: 2014.04.21 @ 01:45:00

### Mud and Cushion Information

Mud Type: Gel Chem

Mud Weight: 10.00 lb/gal

Viscosity: 46.00 sec/qt

Water Loss: 10.40 in<sup>3</sup>

Resistivity: ohm.m

Salinity: 5100.00 ppm

Filter Cake: 1.00 inches

Cushion Type:

Cushion Length: ft

Cushion Volume: bbl

Gas Cushion Type:

Gas Cushion Pressure: psig

Oil API:

Water Salinity: deg API

ppm

### Recovery Information

Recovery Table

Length ft	Description	Volume bbl
2363.00	Water 100%	29.763
0.00	Chlorides 46,000-.3ohms@56degrees	0.000

Total Length: 2363.00 ft      Total Volume: 29.763 bbl

Num Fluid Samples: 0

Num Gas Bombs: 0

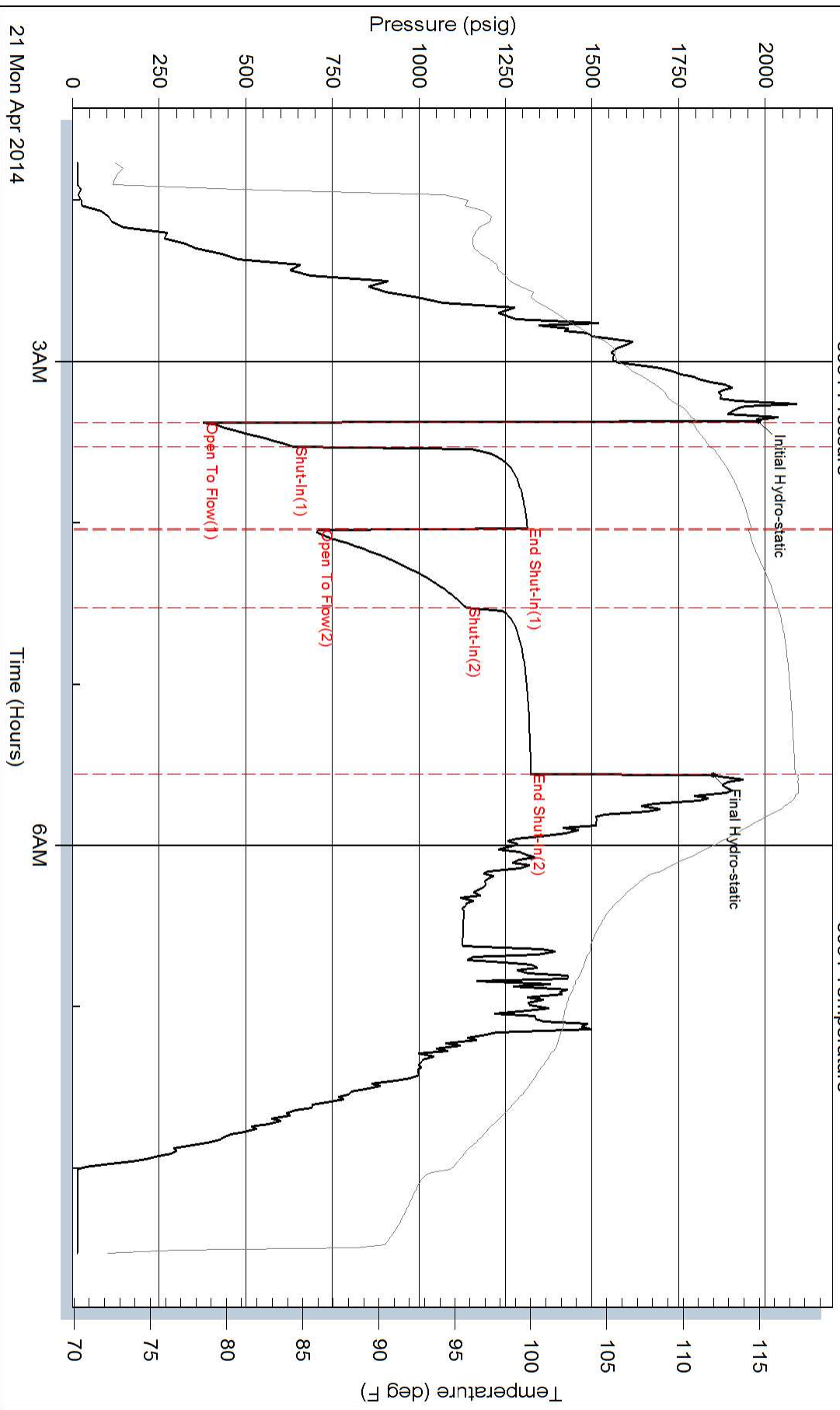
Serial #:

Laboratory Name:

Laboratory Location:

Recovery Comments: Dropped Bar.Reversed Fluid.

### Pressure vs. Time



### Pressure vs. Time

