



DRILL STEM TEST REPORT

Prepared For: **American Warrior, Inc.**

PO Box 399
Garden City, KS 67846

ATTN: Jason T Alm

Fritzler #3

3-23S-24W Hodgeman,KS

Start Date: 2014.04.16 @ 19:24:15

End Date: 2014.04.17 @ 05:31:15

Job Ticket #: 58759 DST #: 1

Trilobite Testing, Inc
PO Box 362 Hays, KS 67601
ph: 785-625-4778 fax: 785-625-5620

Printed: 2014.04.19 @ 12:47:13



TRILOBITE TESTING, INC

DRILL STEM TEST REPORT

American Warrior, Inc.
 PO Box 399
 Garden City, KS 67846
 ATTN: Jason T Alm

3-23S-24W Hodgeman,KS

Fritzler #3

Job Ticket: 58759 **DST#: 1**
 Test Start: 2014.04.16 @ 19:24:15

GENERAL INFORMATION:

Formation: **Miss**
 Deviated: No Whipstock: ft (KB)
 Time Tool Opened: 23:52:15
 Time Test Ended: 05:31:15
 Interval: **4485.00 ft (KB) To 4561.00 ft (KB) (TVD)**
 Total Depth: 4561.00 ft (KB) (TVD)
 Hole Diameter: 7.88 inches Hole Condition: Fair
 Test Type: Conventional Bottom Hole (Initial)
 Tester: Brannan L
 Unit No: 48
 Reference Elevations: 2309.00 ft (KB)
 2298.00 ft (CF)
 KB to GR/CF: 11.00 ft

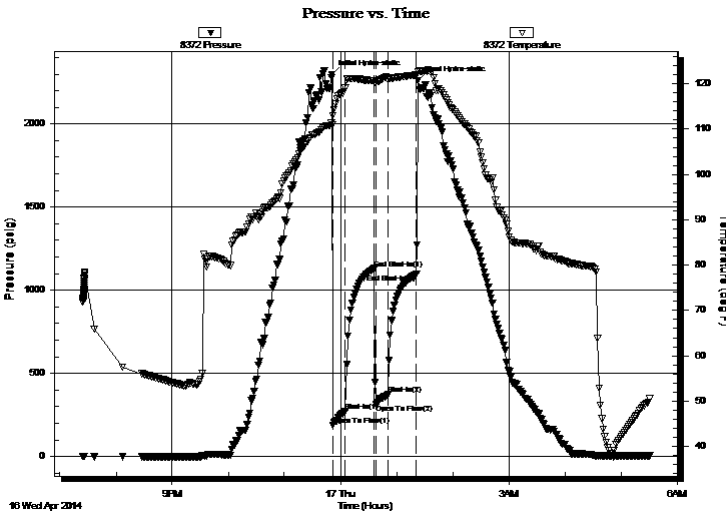
Serial #: 8372

Inside

Press@RunDepth: 371.60 psig @ 4486.00 ft (KB) Capacity: 8000.00 psig
 Start Date: 2014.04.16 End Date: 2014.04.17 Last Calib.: 2014.04.17
 Start Time: 19:24:16 End Time: 05:31:15 Time On Btm: 2014.04.16 @ 23:50:45
 Time Off Btm: 2014.04.17 @ 01:23:15

TEST COMMENT: 15- IF- BOB 1 min
 30- IS- Built to 3"
 15- FF- BOB 2 min
 30- FS- Built to 4"

PRESSURE SUMMARY



Time (Min.)	Pressure (psig)	Temp (deg F)	Annotation
0	2299.30	111.29	Initial Hydro-static
2	186.93	112.99	Open To Flow (1)
15	272.13	119.06	Shut-In(1)
46	1130.99	120.71	End Shut-In(1)
48	311.43	120.64	Open To Flow (2)
60	371.60	121.17	Shut-In(2)
91	1096.13	121.94	End Shut-In(2)
93	2259.10	122.68	Final Hydro-static

Recovery

Length (ft)	Description	Volume (bbl)
100.00	OCM, 30%O 70%M	0.49
200.00	GMCO, 20%G 20%M 60%O	0.98
700.00	MWCO, 15%M 15%W 70%O	9.51
0.00	GTS	0.00

Gas Rates

	Choke (inches)	Pressure (psig)	Gas Rate (Mcf/d)



**TRILOBITE
TESTING, INC**

DRILL STEM TEST REPORT

TOOL DIAGRAM

American Warrior, Inc.

3-23S-24W Hodgeman,KS

PO Box 399
Garden City, KS 67846

Fritzler #3

Job Ticket: 58759

DST#: 1

ATTN: Jason T Alm

Test Start: 2014.04.16 @ 19:24:15

Tool Information

Drill Pipe:	Length: 4182.00 ft	Diameter: 3.75 inches	Volume: 57.13 bbl	Tool Weight:	2500.00 lb
Heavy Wt. Pipe:	Length: ft	Diameter: 2.75 inches	Volume: - bbl	Weight set on Packer:	25000.00 lb
Drill Collar:	Length: 306.00 ft	Diameter: 2.25 inches	Volume: 1.50 bbl	Weight to Pull Loose:	75000.00 lb
			<u>Total Volume:</u>	Tool Chased	0.00 ft
				String Weight: Initial	68000.00 lb
Drill Pipe Above KB:	30.00 ft			Final	73000.00 lb
Depth to Top Packer:	4485.00 ft				
Depth to Bottom Packer:	ft				
Interval between Packers:	76.00 ft				
Tool Length:	103.00 ft				
Number of Packers:	2	Diameter:	6.75 inches		
Tool Comments:					

Tool Description

Tool Description	Length (ft)	Serial No.	Position	Depth (ft)	Accum. Lengths
Change Over Sub	1.00			4459.00	
Shut In Tool	5.00			4464.00	
Hydraulic tool	5.00			4469.00	
Jars	5.00			4474.00	
Safety Joint	2.00			4476.00	
Packer	5.00			4481.00	27.00 Bottom Of Top Packer
Packer	4.00			4485.00	
Stubb	1.00			4486.00	
Recorder	0.00	8372	Inside	4486.00	
Recorder	0.00	8321	Outside	4486.00	
Perforations	7.00			4493.00	
Change Over Sub	1.00			4494.00	
Drill Pipe	63.00			4557.00	
Change Over Sub	1.00			4558.00	
Bullnose	3.00			4561.00	76.00 Bottom Packers & Anchor

Total Tool Length: 103.00



**TRILOBITE
TESTING, INC**

DRILL STEM TEST REPORT

FLUID SUMMARY

American Warrior, Inc.

3-23S-24W Hodgeman,KS

PO Box 399
Garden City, KS 67846

Fritzler #3

Job Ticket: 58759

DST#: 1

ATTN: Jason T Alm

Test Start: 2014.04.16 @ 19:24:15

Mud and Cushion Information

Mud Type: Gel Chem

Cushion Type:

Oil API:

38 deg API

Mud Weight: 9.00 lb/gal

Cushion Length:

ft

Water Salinity:

ppm

Viscosity: 50.00 sec/qt

Cushion Volume:

bbbl

Water Loss: 9.59 in³

Gas Cushion Type:

Resistivity: ohm.m

Gas Cushion Pressure:

psig

Salinity: 5200.00 ppm

Filter Cake: inches

Recovery Information

Recovery Table

Length ft	Description	Volume bbbl
100.00	OCM, 30%O 70%M	0.492
200.00	GMCO, 20%G 20%M 60%O	0.984
700.00	MWCO, 15%M 15%W 70%O	9.510
0.00	GTS	0.000

Total Length: 1000.00 ft

Total Volume: 10.986 bbl

Num Fluid Samples: 0

Num Gas Bombs: 0

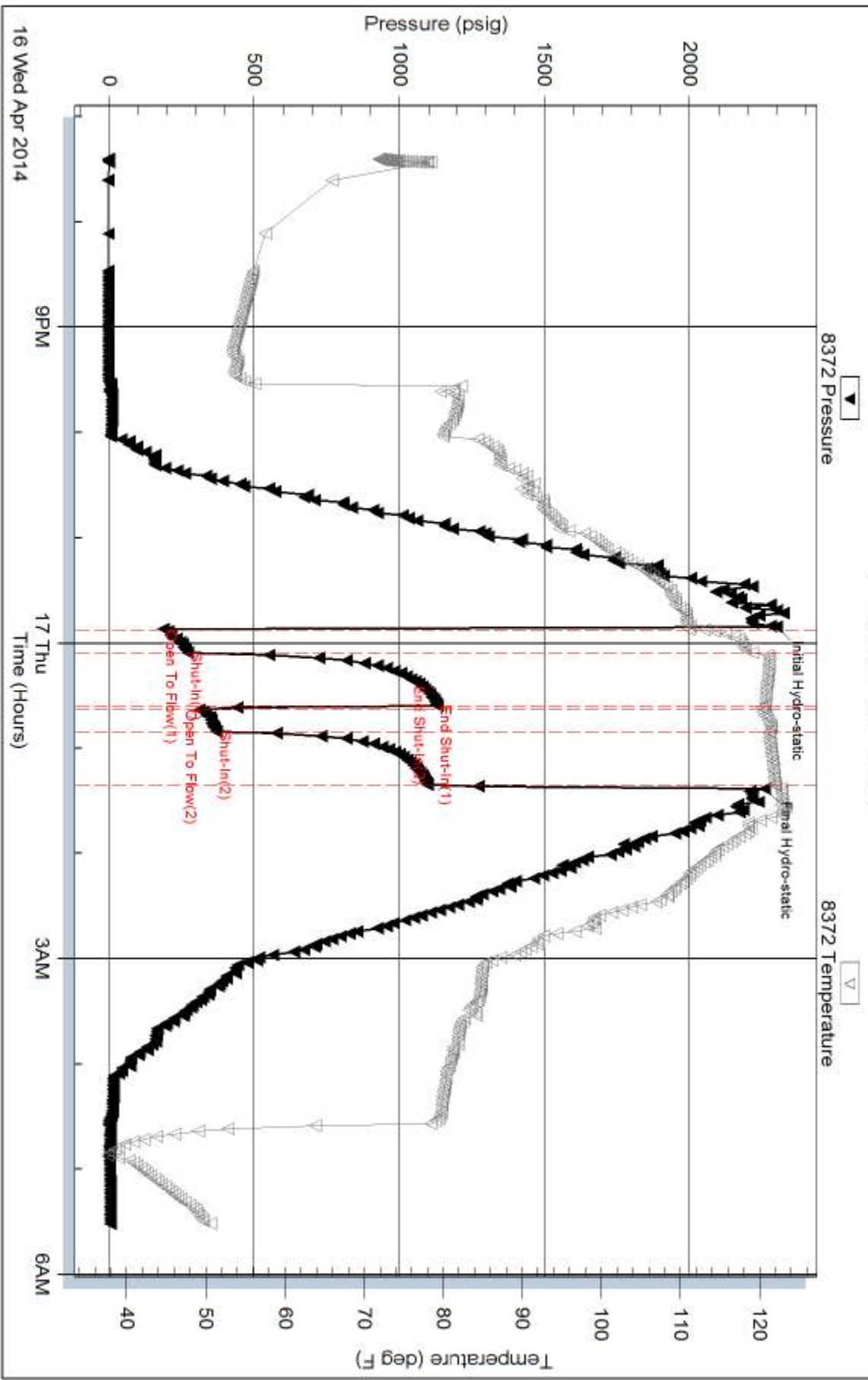
Serial #:

Laboratory Name:

Laboratory Location:

Recovery Comments:

Pressure vs. Time

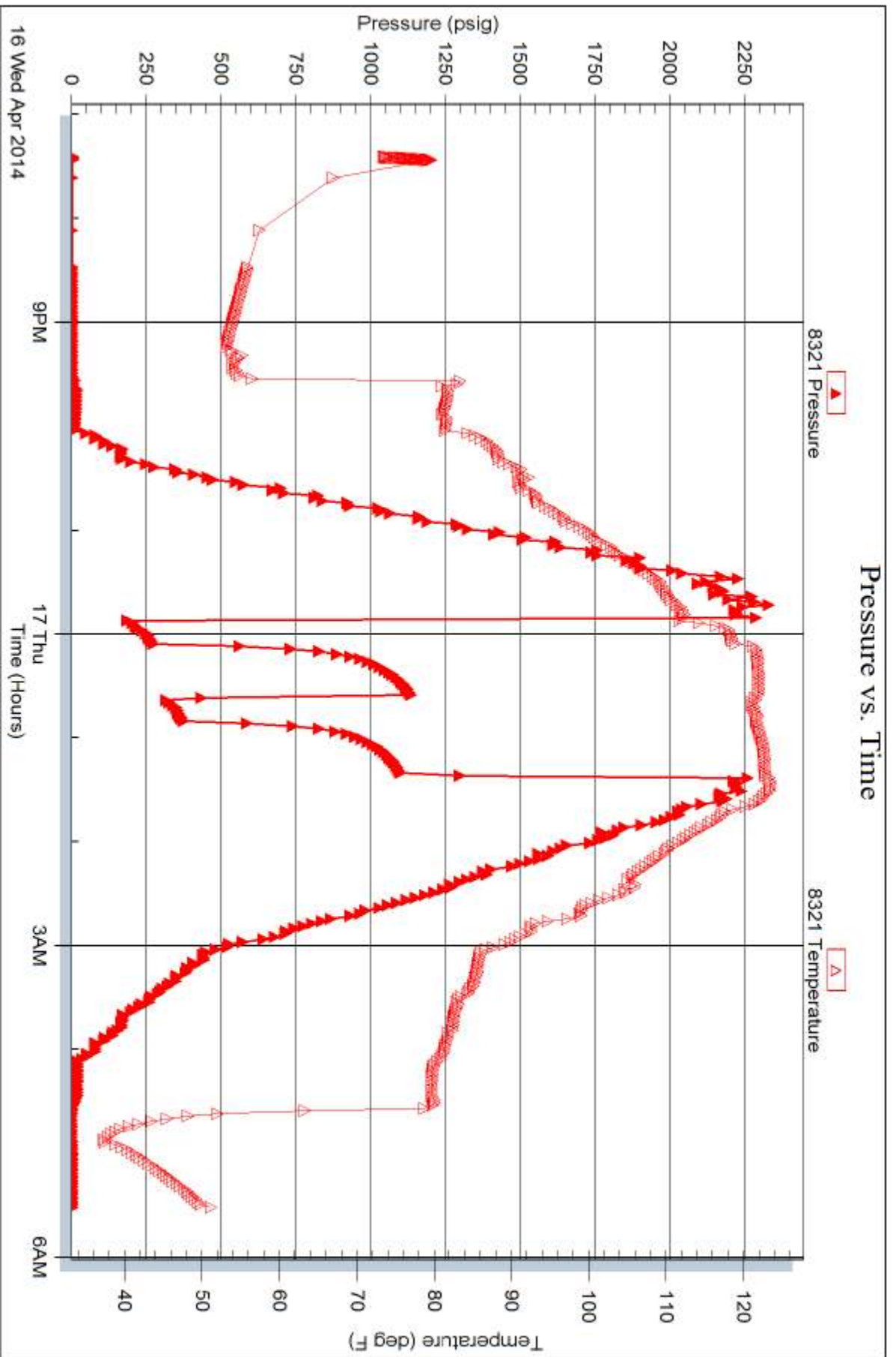


Serial #: 8321

Outside American Warrior, Inc.

Fritzler #3

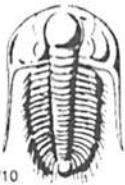
DST Test Number: 1



Triobite Testing, Inc

Ref. No: 58759

Printed: 2014.04.19 @ 12:47:15



TRILOBITE TESTING INC.

1515 Commerce Parkway • Hays, Kansas 67601

Test Ticket

NO. 58759

4/10

Well Name & No. Fritzler #3 Test No. 1 Date 4/16/14
 Company American Warrior, Inc. Elevation 2309 KB 2298 GL
 Address 3118 Cummings Rd. PO Box 399 Garden City, KS 67846
 Co. Rep / Geo. Jason T Alm Rig Duke #5
 Location: Sec. 3 Twp. 23 S Rge. 24 W Co. Hodgeman State KS

Interval Tested 4485 - 4561 Zone Tested Miss
 Anchor Length 26' Drill Pipe Run 4182 Mud Wt. 9.45
 Top Packer Depth 4480 Drill Collars Run 306 Vis 50
 Bottom Packer Depth 4485 Wt. Pipe Run _____ WL 9.6
 Total Depth 4561 Chlorides 5,200 ppm System LCM 1/2#

Blow Description IF - BOB 1 min
ISI - Built to 3" Gas to surface
FF - BOB 3 min
FSI - Built to 4"

Rec	Feet of	%gas	%oil	%water	%mud
<u>100</u>	<u>GCM</u>		<u>30</u>		<u>70</u>
<u>200</u>	<u>GMC0</u>	<u>20</u>	<u>60</u>		<u>20</u>
<u>700</u>	<u>MWC0</u>		<u>70</u>	<u>15</u>	<u>15</u>
Rec _____	Feet of <u>3500' GIP</u>	%gas	%oil	%water	%mud
Rec _____	Feet of _____	%gas	%oil	%water	%mud

Rec Total 1,000' BHT 122° Gravity 38 API RW _____ @ _____ ° F Chlorides _____ ppm

(A) Initial Hydrostatic 2299 Test 1250 T-On Location 1904
 (B) First Initial Flow 187 Jars 250 T-Started 1924
 (C) First Final Flow 272 Safety Joint 75 T-Open 2351
 (D) Initial Shut-In 1131 Circ Sub _____ T-Pulled 0121 4/17
 (E) Second Initial Flow 311 Hourly Standby _____ T-Out 0532
 (F) Second Final Flow 372 Mileage 222 RT Comments _____
 (G) Final Shut-In 1096 Sampler 168rt 260.40
 (H) Final Hydrostatic 2259 Straddle _____ Ruined Shale Packer _____
 Shale Packer _____ Ruined Packer _____
 Extra Packer _____ Extra Copies _____
 Extra Recorder _____ Sub Total 0
 Day Standby _____ Total 1835.40
 Accessibility _____ MP/DST Disc't _____

Initial Open 15
 Initial Shut-In 30
 Final Flow 15
 Final Shut-In 30
 Sub Total 1835.40

Approved By _____ Our Representative Bragman L

TriLOBITE Testing Inc. shall not be liable for damaged of any kind of the property or personnel of the one for whom a test is made, or for any loss suffered or sustained, directly or indirectly, through the use of its equipment, or its statements or opinion concerning the results of any test, tools lost or damaged in the hole shall be paid for at cost by the party for whom the test is made.