



DRILL STEM TEST REPORT

Prepared For: **American Warrior, Inc.**

PO Box 399
Garden City, KS 67846

ATTN: Jason Alm

MMH #1-25

25-20s-21w Ness,KS

Start Date: 2014.04.02 @ 16:39:00

End Date: 2014.04.03 @ 03:11:00

Job Ticket #: 55380 DST #: 1

Trilobite Testing, Inc
PO Box 362 Hays, KS 67601
ph: 785-625-4778 fax: 785-625-5620

Printed: 2014.04.04 @ 14:10:51



TRILOBITE TESTING, INC

DRILL STEM TEST REPORT

American Warrior, Inc.

25-20s-21w Ness, KS

PO Box 399
Garden City, KS 67846

MMH #1-25

Job Ticket: 55380

DST#: 1

ATTN: Jason Alm

Test Start: 2014.04.02 @ 16:39:00

GENERAL INFORMATION:

Formation: **Miss**

Deviated: No Whipstock: ft (KB)

Time Tool Opened: 21:05:00

Time Test Ended: 03:11:00

Test Type: Conventional Bottom Hole (Initial)

Tester: Phillip Gage

Unit No: 48

Interval: 4345.00 ft (KB) To 4396.00 ft (KB) (TVD)

Reference Elevations: 2228.00 ft (KB)

Total Depth: 4396.00 ft (KB) (TVD)

2222.00 ft (CF)

Hole Diameter: 7.88 inches Hole Condition: Fair

KB to GR/CF: 6.00 ft

Serial #: 8372 Inside

Press@RunDepth: 117.40 psig @ 4346.00 ft (KB)

Capacity: 8000.00 psig

Start Date: 2014.04.02

End Date:

2014.04.03

Last Calib.: 2014.04.03

Start Time: 16:39:01

End Time:

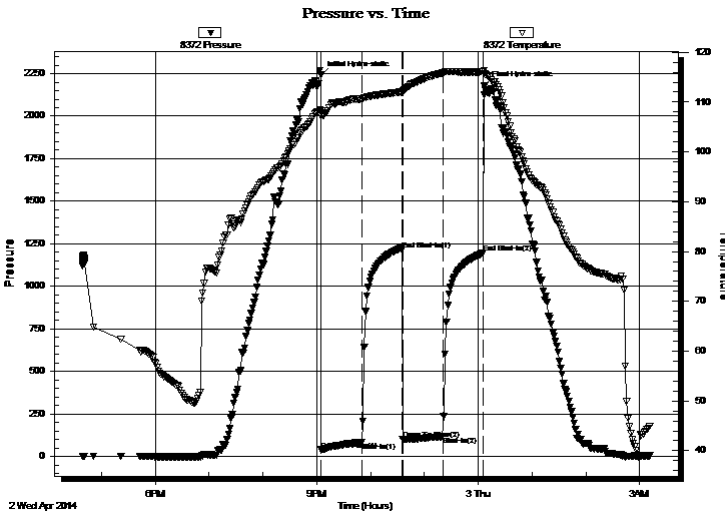
03:11:00

Time On Btm: 2014.04.02 @ 21:04:30

Time Off Btm: 2014.04.03 @ 00:07:00

TEST COMMENT: IF-Built to 5 3/4"
IS-No Return
FF-Built to 4 1/4"
FS-No Return

PRESSURE SUMMARY



Time (Min.)	Pressure (psig)	Temp (deg F)	Annotation
0	2240.61	108.24	Initial Hydro-static
1	38.20	107.23	Open To Flow (1)
46	82.93	110.61	Shut-In(1)
91	1213.83	112.03	End Shut-In(1)
91	100.72	111.89	Open To Flow (2)
136	117.40	115.87	Shut-In(2)
181	1195.91	116.08	End Shut-In(2)
183	2178.21	115.74	Final Hydro-static

Recovery

Length (ft)	Description	Volume (bbl)
60.00	WM with oil spots, 10%w, 90%m	0.30
60.00	SOWCM, 5%o, 5%w, 90%m	0.30
63.00	SOCM, 5%o, 95%m	0.88
30.00	OM, 30%o, 70%m	0.42

Gas Rates

	Choke (inches)	Pressure (psig)	Gas Rate (Mcf/d)



TRILOBITE TESTING, INC.

DRILL STEM TEST REPORT

American Warrior, Inc.

25-20s-21w Ness, KS

PO Box 399
Garden City, KS 67846

MMH #1-25

Job Ticket: 55380

DST#: 1

ATTN: Jason Alm

Test Start: 2014.04.02 @ 16:39:00

GENERAL INFORMATION:

Formation: **Miss**

Deviated: No Whipstock: ft (KB)

Time Tool Opened: 21:05:00

Time Test Ended: 03:11:00

Test Type: Conventional Bottom Hole (Initial)

Tester: Phillip Gage

Unit No: 48

Interval: 4345.00 ft (KB) To 4396.00 ft (KB) (TVD)

Reference Elevations: 2228.00 ft (KB)

Total Depth: 4396.00 ft (KB) (TVD)

2222.00 ft (CF)

Hole Diameter: 7.88 inches Hole Condition: Fair

KB to GR/CF: 6.00 ft

Serial #: 8321 Outside

Press@RunDepth: psig @ 4346.00 ft (KB)

Capacity: 8000.00 psig

Start Date: 2014.04.02

End Date: 2014.04.03

Last Calib.: 2014.04.03

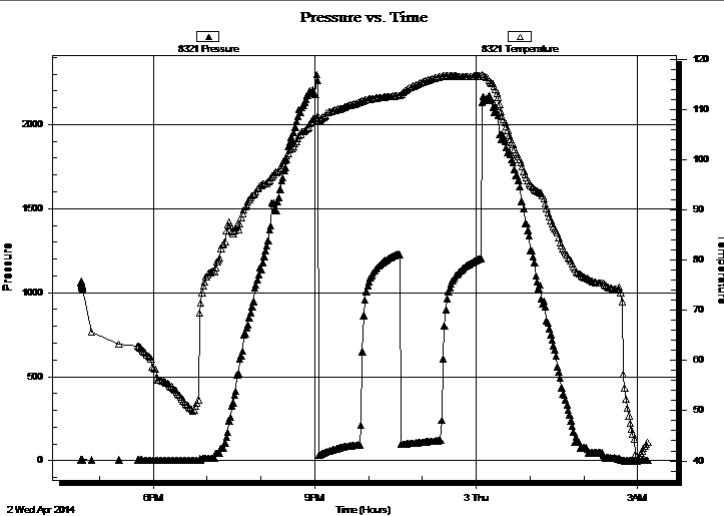
Start Time: 16:39:01

End Time: 03:11:00

Time On Btm:

Time Off Btm:

TEST COMMENT: IF-Built to 5 3/4"
IS-No Return
FF-Built to 4 1/4"
FS-No Return



PRESSURE SUMMARY

Time (Min.)	Pressure (psig)	Temp (deg F)	Annotation

Recovery

Length (ft)	Description	Volume (bbl)
60.00	WM with oil spots, 10%w, 90%m	0.30
60.00	SOWCM, 5%o, 5%w, 90%m	0.30
63.00	SOCM, 5%o, 95%m	0.88
30.00	OM, 30%o, 70%m	0.42

Gas Rates

	Choke (inches)	Pressure (psig)	Gas Rate (Mcf/d)



**TRILOBITE
TESTING, INC**

DRILL STEM TEST REPORT

TOOL DIAGRAM

American Warrior, Inc.

25-20s-21w Ness, KS

PO Box 399
Garden City, KS 67846

MMH #1-25

Job Ticket: 55380

DST#: 1

ATTN: Jason Alm

Test Start: 2014.04.02 @ 16:39:00

Tool Information

Drill Pipe:	Length: 4221.00 ft	Diameter: 3.80 inches	Volume: 59.21 bbl	Tool Weight: 2500.00 lb
Heavy Wt. Pipe:	Length: 0.00 ft	Diameter: 2.75 inches	Volume: 0.00 bbl	Weight set on Packer: 25000.00 lb
Drill Collar:	Length: 120.00 ft	Diameter: 2.25 inches	Volume: 0.59 bbl	Weight to Pull Loose: 82000.00 lb
			<u>Total Volume: 59.80 bbl</u>	Tool Chased 0.00 ft
Drill Pipe Above KB:	23.00 ft			String Weight: Initial 61000.00 lb
Depth to Top Packer:	4345.00 ft			Final 63000.00 lb
Depth to Bottom Packer:	ft			
Interval between Packers:	51.00 ft			
Tool Length:	78.00 ft			
Number of Packers:	2	Diameter: 6.75 inches		

Tool Comments:

Tool Description

Tool Description	Length (ft)	Serial No.	Position	Depth (ft)	Accum. Lengths
Change Over Sub	1.00			4319.00	
Shut In Tool	5.00			4324.00	
Hydraulic tool	5.00			4329.00	
Jars	5.00			4334.00	
Safety Joint	2.00			4336.00	
Packer	5.00			4341.00	27.00 Bottom Of Top Packer
Packer	4.00			4345.00	
Blank Spacing	1.00			4346.00	
Recorder	0.00	8372	Inside	4346.00	
Recorder	0.00	8321	Outside	4346.00	
Perforations	14.00			4360.00	
Change Over Sub	1.00			4361.00	
Drill Pipe	31.00			4392.00	
Change Over Sub	1.00			4393.00	
Bullnose	3.00			4396.00	51.00 Bottom Packers & Anchor

Total Tool Length: 78.00



**TRILOBITE
TESTING, INC**

DRILL STEM TEST REPORT

FLUID SUMMARY

American Warrior, Inc.

25-20s-21w Ness, KS

PO Box 399
Garden City, KS 67846

MMH #1-25

Job Ticket: 55380

DST#: 1

ATTN: Jason Alm

Test Start: 2014.04.02 @ 16:39:00

Mud and Cushion Information

Mud Type: Gel Chem

Cushion Type:

Oil API:

deg API

Mud Weight: 10.00 lb/gal

Cushion Length:

ft

Water Salinity:

ppm

Viscosity: 56.00 sec/qt

Cushion Volume:

bbbl

Water Loss: 7.59 in³

Gas Cushion Type:

Resistivity: ohm.m

Gas Cushion Pressure:

psig

Salinity: 5000.00 ppm

Filter Cake: inches

Recovery Information

Recovery Table

Length ft	Description	Volume bbbl
60.00	WM with oil spots, 10%w, 90%m	0.295
60.00	SOWCM, 5%o, 5%w, 90%m	0.295
63.00	SOCM, 5%o, 95%m	0.884
30.00	OM, 30%o, 70%m	0.421

Total Length: 213.00 ft

Total Volume: 1.895 bbl

Num Fluid Samples: 0

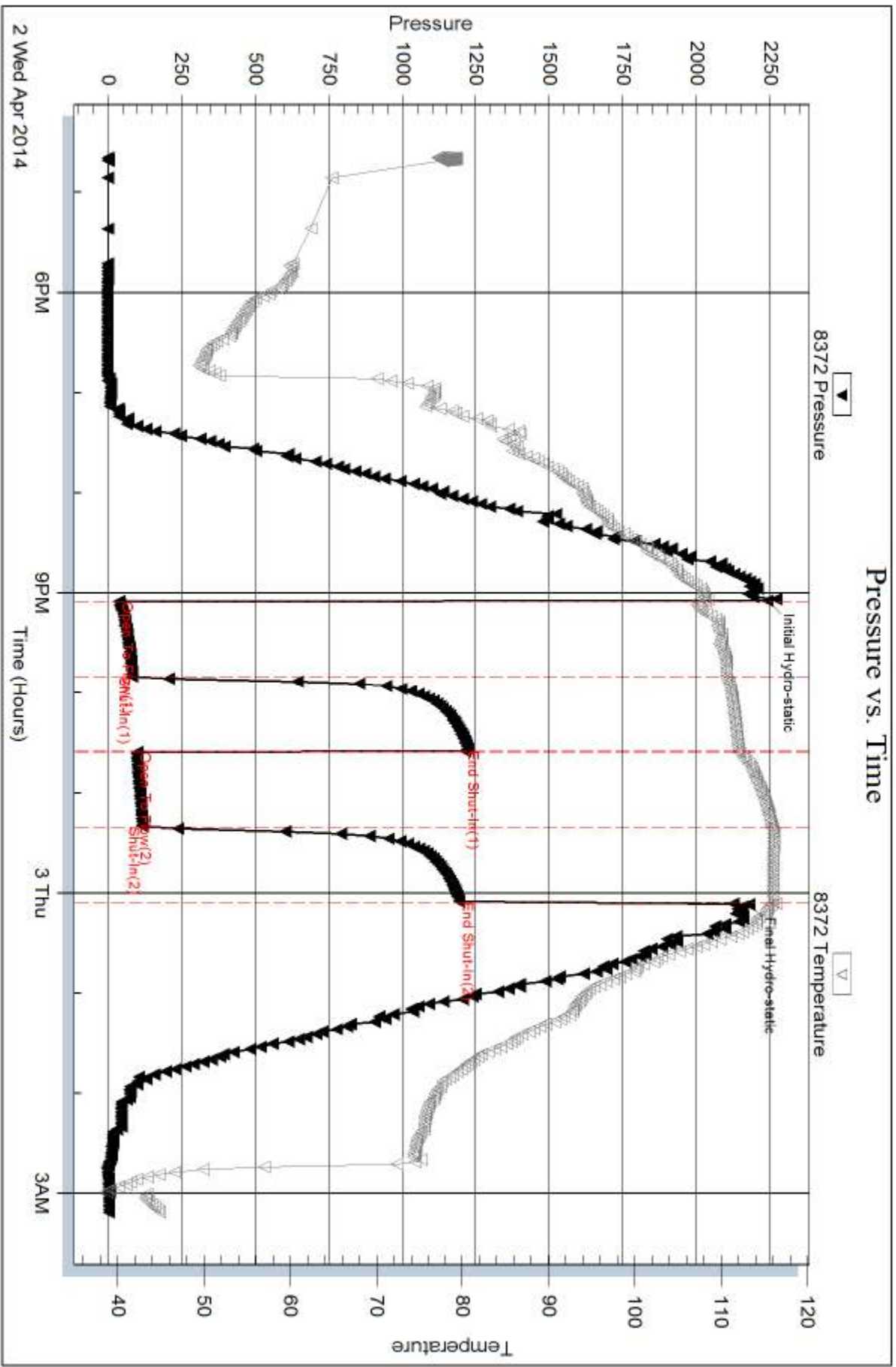
Num Gas Bombs: 0

Serial #:

Laboratory Name:

Laboratory Location:

Recovery Comments:

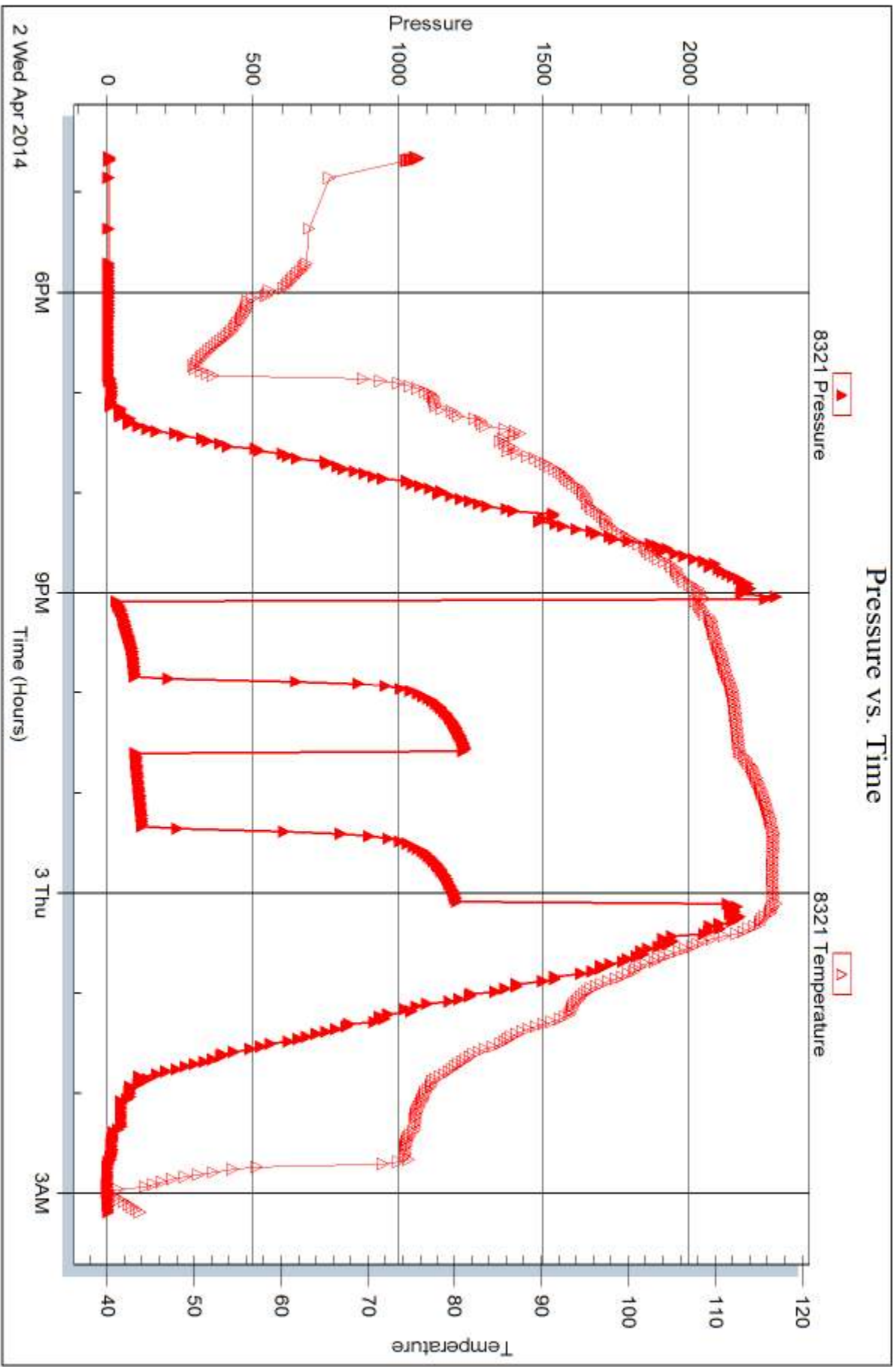


Serial #: 8321

Outside American Warrior, Inc.

MMH#1-25

DST Test Number: 1



Tribble Testing, Inc

Ref. No: 55380

Printed: 2014.04.04 @ 14:10:53



DRILL STEM TEST REPORT

Prepared For: **American Warrior, Inc.**

PO Box 399
Garden City, KS 67846

ATTN: Jason Alm

MMH #1-25

25-20s-21w Ness,KS

Start Date: 2014.04.03 @ 10:24:11

End Date: 2014.04.03 @ 19:52:41

Job Ticket #: 55381 DST #: 2

Trilobite Testing, Inc
PO Box 362 Hays, KS 67601
ph: 785-625-4778 fax: 785-625-5620

Printed: 2014.04.04 @ 14:10:04



**TRILOBITE
TESTING, INC**

DRILL STEM TEST REPORT

American Warrior, Inc.

25-20s-21w Ness,KS

PO Box 399
Garden City, KS 67846

MMH #1-25

Job Ticket: 55381

DST#: 2

ATTN: Jason Alm

Test Start: 2014.04.03 @ 10:24:11

GENERAL INFORMATION:

Formation: **Miss**

Deviated: No Whipstock: ft (KB)

Time Tool Opened: 15:12:41

Time Test Ended: 19:52:41

Test Type: Conventional Bottom Hole (Reset)

Tester: Brannan L

Unit No: 48

Interval: 4394.00 ft (KB) To 4401.00 ft (KB) (TVD)

Reference Elevations: 2228.00 ft (KB)

Total Depth: 4401.00 ft (KB) (TVD)

2222.00 ft (CF)

Hole Diameter: 7.88 inches Hole Condition: Fair

KB to GR/CF: 6.00 ft

Serial #: 8372 Inside

Press@RunDepth: 122.11 psig @ 4395.00 ft (KB)

Capacity: 8000.00 psig

Start Date: 2014.04.03

End Date:

2014.04.03

Last Calib.: 2014.04.03

Start Time: 10:24:12

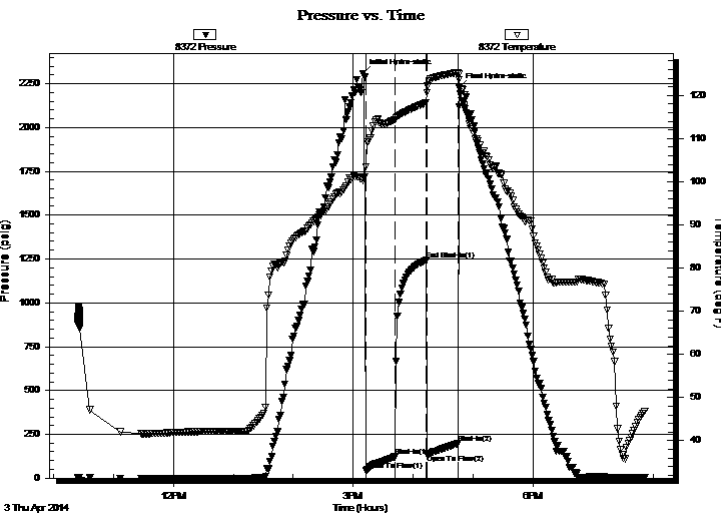
End Time:

19:52:41

Time On Btm: 2014.04.03 @ 15:09:41

Time Off Btm: 2014.04.03 @ 16:46:11

TEST COMMENT: 30- IF- BOB 16 mins
30- IS- Surface blow
30- FF- BOB 21 mins
30-FS- Pulled tool



PRESSURE SUMMARY

Time (Min.)	Pressure (psig)	Temp (deg F)	Annotation
0	2308.73	100.31	Initial Hydro-static
3	43.09	103.42	Open To Flow (1)
32	122.11	114.36	Shut-In(1)
63	1242.36	118.27	End Shut-In(1)
64	138.45	120.64	Open To Flow (2)
96	197.45	125.33	Shut-In(2)
97	2228.89	123.67	Final Hydro-static

Recovery

Length (ft)	Description	Volume (bbl)
10.00	O	0.05
400.00	MW, 30%M 70%W	4.62

* Recovery from multiple tests

Gas Rates

	Choke (inches)	Pressure (psig)	Gas Rate (Mcf/d)



TRILOBITE
TESTING, INC

DRILL STEM TEST REPORT

American Warrior, Inc.
PO Box 399
Garden City, KS 67846
ATTN: Jason Alm

25-20s-21w Ness,KS
MMH #1-25
Job Ticket: 55381 **DST#: 2**
Test Start: 2014.04.03 @ 10:24:11

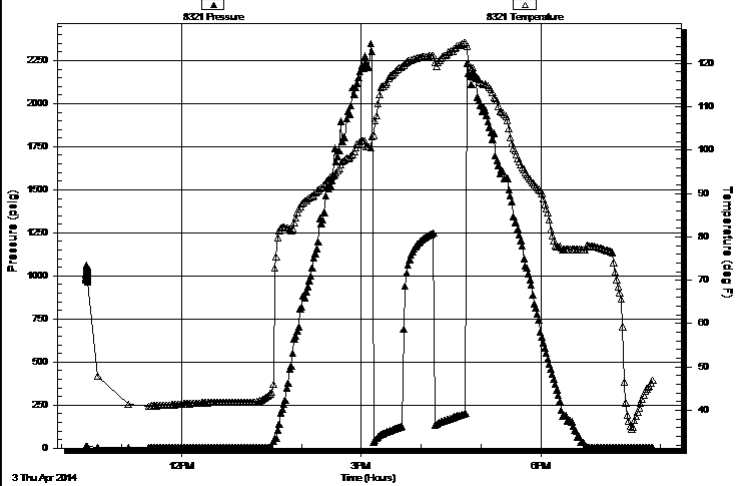
GENERAL INFORMATION:

Formation: Miss		Test Type: Conventional Bottom Hole (Reset)
Deviated: No Whipstock: ft (KB)		Tester: Brannan L
Time Tool Opened: 15:12:41		Unit No: 48
Time Test Ended: 19:52:41		
Interval: 4394.00 ft (KB) To 4401.00 ft (KB) (TVD)		Reference Elevations: 2228.00 ft (KB)
Total Depth: 4401.00 ft (KB) (TVD)		2222.00 ft (CF)
Hole Diameter: 7.88 inches	Hole Condition: Fair	KB to GR/CF: 6.00 ft

Serial #: 8321	Outside		
Press@RunDepth: psig @ 4395.00 ft (KB)	Capacity: 8000.00 psig		
Start Date: 2014.04.03	End Date: 2014.04.03	Last Calib.: 2014.04.03	
Start Time: 10:23:51	End Time: 19:52:20	Time On Btm:	Time Off Btm:

TEST COMMENT: 30- IF- BOB 16 mins
30- IS- Surface blow
30- FF- BOB 21 mins
30-FS- Pulled tool

Pressure vs. Time



PRESSURE SUMMARY

Time (Min.)	Pressure (psig)	Temp (deg F)	Annotation

Recovery

Length (ft)	Description	Volume (bbl)
10.00	O	0.05
400.00	MW, 30%M 70%W	4.62

Gas Rates

Choke (inches)	Pressure (psig)	Gas Rate (Mcf/d)

* Recovery from multiple tests



**TRILOBITE
TESTING, INC**

DRILL STEM TEST REPORT

TOOL DIAGRAM

American Warrior, Inc.

25-20s-21w Ness, KS

PO Box 399
Garden City, KS 67846

MMH #1-25

Job Ticket: 55381

DST#: 2

ATTN: Jason Alm

Test Start: 2014.04.03 @ 10:24:11

Tool Information

Drill Pipe:	Length: 4254.00 ft	Diameter: 3.80 inches	Volume: 59.67 bbl	Tool Weight: 2500.00 lb
Heavy Wt. Pipe:	Length: 0.00 ft	Diameter: 2.75 inches	Volume: 0.00 bbl	Weight set on Packer: 25000.00 lb
Drill Collar:	Length: 119.00 ft	Diameter: 2.25 inches	Volume: 0.59 bbl	Weight to Pull Loose: 70000.00 lb
			<u>Total Volume: 60.26 bbl</u>	Tool Chased 0.00 ft
Drill Pipe Above KB:	6.00 ft			String Weight: Initial 61000.00 lb
Depth to Top Packer:	4394.00 ft			Final 63000.00 lb
Depth to Bottom Packer:	ft			
Interval between Packers:	7.00 ft			
Tool Length:	34.00 ft			
Number of Packers:	2	Diameter: 6.75 inches		

Tool Comments:

Tool Description

Tool Description	Length (ft)	Serial No.	Position	Depth (ft)	Accum. Lengths
Change Over Sub	1.00			4368.00	
Shut In Tool	5.00			4373.00	
Hydraulic tool	5.00			4378.00	
Jars	5.00			4383.00	
Safety Joint	2.00			4385.00	
Packer	5.00			4390.00	27.00 Bottom Of Top Packer
Packer	4.00			4394.00	
Stubb	1.00			4395.00	
Recorder	0.00	8372	Inside	4395.00	
Recorder	0.00	8321	Outside	4395.00	
Perforations	3.00			4398.00	
Bullnose	3.00			4401.00	7.00 Bottom Packers & Anchor

Total Tool Length: 34.00



**TRILOBITE
TESTING, INC**

DRILL STEM TEST REPORT

FLUID SUMMARY

American Warrior, Inc.

25-20s-21w Ness, KS

PO Box 399
Garden City, KS 67846

MMH #1-25

Job Ticket: 55381

DST#: 2

ATTN: Jason Alm

Test Start: 2014.04.03 @ 10:24:11

Mud and Cushion Information

Mud Type: Gel Chem

Cushion Type:

Oil API:

deg API

Mud Weight: 9.00 lb/gal

Cushion Length:

ft

Water Salinity:

ppm

Viscosity: 59.00 sec/qt

Cushion Volume:

bbbl

Water Loss: 7.99 in³

Gas Cushion Type:

Resistivity: ohm.m

Gas Cushion Pressure:

psig

Salinity: 6400.00 ppm

Filter Cake: inches

Recovery Information

Recovery Table

Length ft	Description	Volume bbbl
10.00	O	0.049
400.00	MW, 30%M 70%W	4.618

Total Length: 410.00 ft Total Volume: 4.667 bbl

Num Fluid Samples: 0

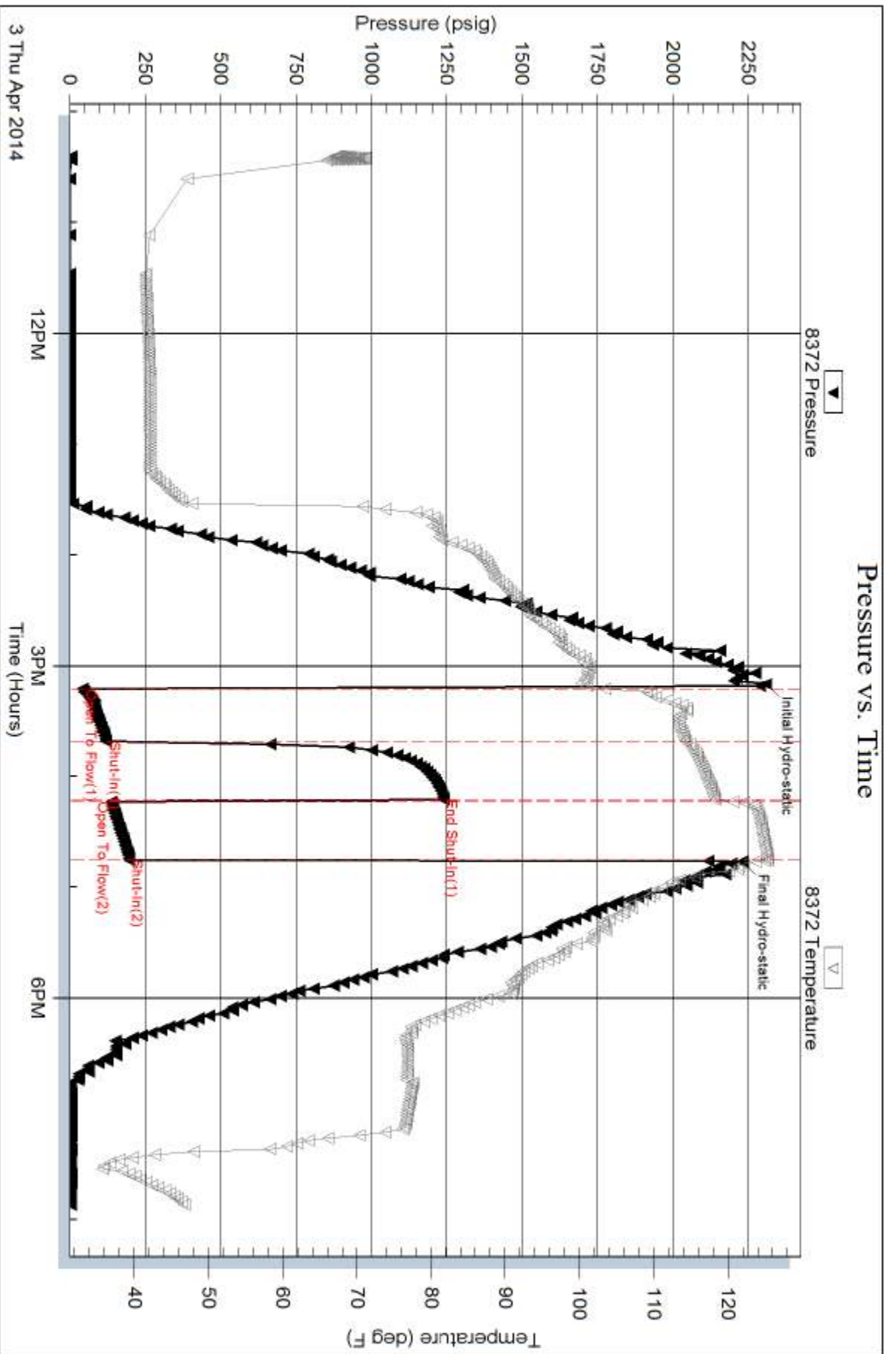
Num Gas Bombs: 0

Serial #:

Laboratory Name:

Laboratory Location:

Recovery Comments:

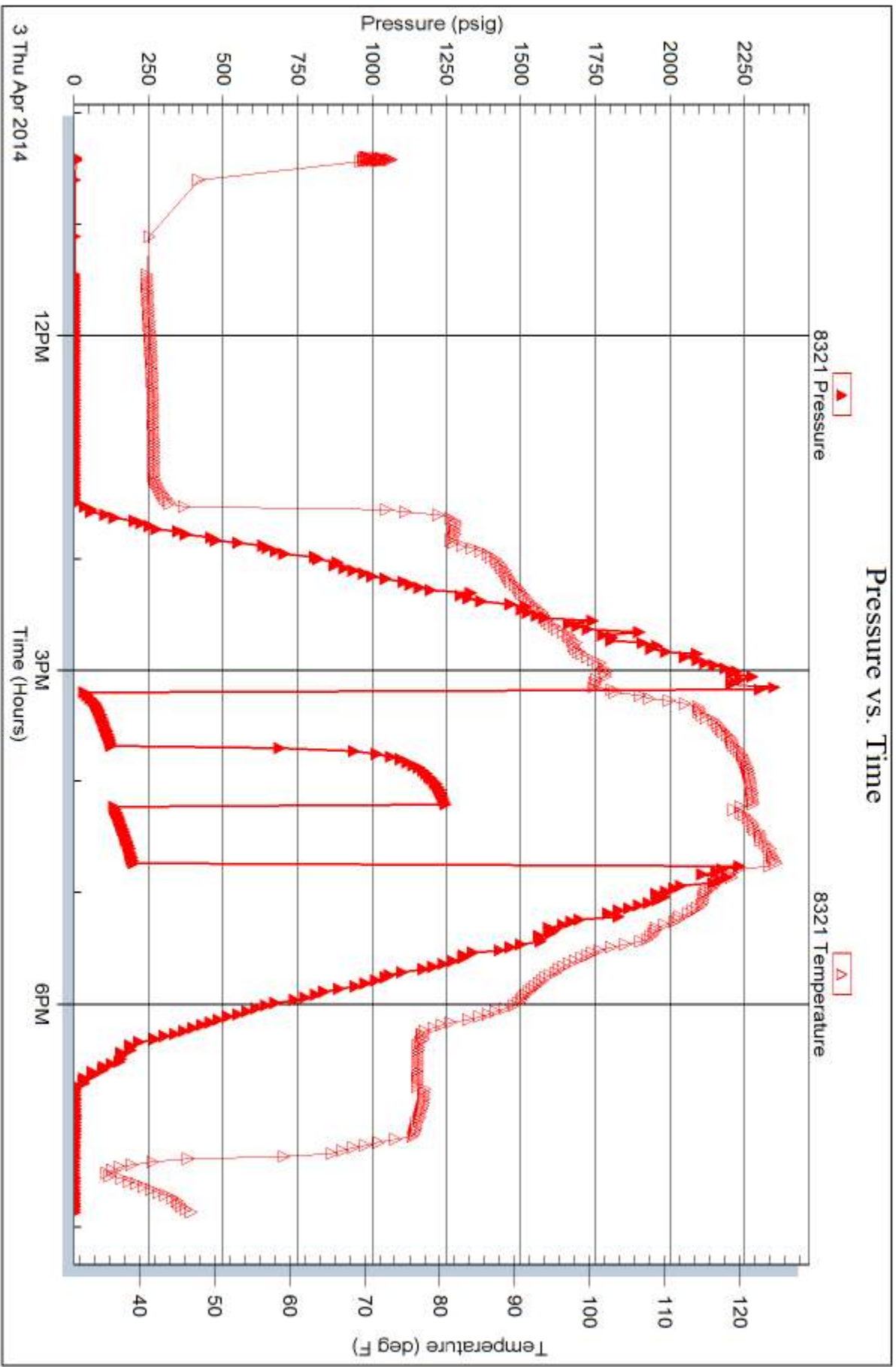


Serial #: 8321

Outside American Warrior, Inc.

MMH#1-25

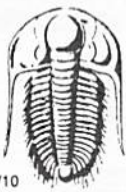
DST Test Number: 2



Tribble Testing, Inc

Ref. No: 55381

Printed: 2014.04.04 @ 14:10:07



TRILOBITE TESTING INC.

1515 Commerce Parkway • Hays, Kansas 67601

Test Ticket

NO. **55380**

Well Name & No. MMH # 1-25 Test No. 1 Date 4-2-14
 Company American Warrior, Inc Elevation 2228 KB 2222 GL
 Address 3118 Cummings RD, P.O. Box 399, Garden City, KS 67846
 Co. Rep / Geo. Jason Alm Rig Petromark #1
 Location: Sec. 25 Twp. 20 S Rge. 21 W Co. Neos State KS

Interval Tested 4345-4396 Zone Tested Miss
 Anchor Length 51 Drill Pipe Run 4221 Mud Wt. 9.5
 Top Packer Depth 4340 Drill Collars Run 120 Vis 56
 Bottom Packer Depth 4345 Wt. Pipe Run 0 WL 7.6
 Total Depth 4396 Chlorides 5,000 ppm System LCM 0

Blow Description IF - Built to 5 3/4"
ISI - No Return
FF - Built to 4 1/4"
FST - No Return

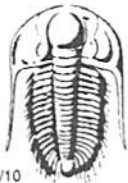
Rec	Feet of	%gas	%oil	%water	%mud
<u>60</u>	<u>WM with oil spots</u>			<u>10</u>	<u>90</u>
<u>60</u>	<u>SOWM</u>		<u>5</u>	<u>5</u>	<u>90</u>
<u>63</u>	<u>SOM</u>		<u>5</u>		<u>95</u>
<u>30</u>	<u>OM</u>		<u>30</u>		<u>70</u>

Rec Total 213 BHT 116 Gravity — API RW — @ — °F Chlorides — ppm

(A) Initial Hydrostatic 2240 Test 1250 T-On Location 16:15
 (B) First Initial Flow 38 Jars 250 T-Started 16:39
 (C) First Final Flow 82 Safety Joint 75 T-Open 21:05
 (D) Initial Shut-In 1213 Circ Sub _____ T-Pulled 00:05
 (E) Second Initial Flow 106 Hourly Standby _____ T-Out 03:11
 (F) Second Final Flow 117 Mileage 126 RT 195.30 Comments _____
 (G) Final Shut-In 1195 Sampler _____
 (H) Final Hydrostatic 2178 Straddle _____ Ruined Shale Packer _____
 Shale Packer _____ Ruined Packer _____
 Extra Packer _____ Extra Copies _____
 Extra Recorder _____ Sub Total 0
 Day Standby _____ Total 1770.30
 Accessibility _____ MP/DST Disc't _____
 Sub Total 1770.30

Approved By _____ Our Representative [Signature]

Trilobite Testing Inc. shall not be liable for damaged of any kind of the property or personnel of the one for whom a test is made, or for any loss suffered or sustained, directly or indirectly, through the use of its equipment, or its statements or opinion concerning the results of any test, tools lost or damaged in the hole shall be paid for at cost by the party for whom the test is made.



TRILOBITE TESTING INC.

1515 Commerce Parkway • Hays, Kansas 67601

Test Ticket

NO. **55381**

Well Name & No. MMH #1-25 Test No. 2 Date 4-3-14
 Company American Warrior, Inc Elevation 2228 KB 2222 GL
 Address 3118 Cummings RD, P.O. Box 349, Garden City, KS 67846
 Co. Rep / Geo. Jason Alm Rig Petromark #1
 Location: Sec. 25 Twp. 20S Rge. 21W Co. Ness State KS

Interval Tested 4394-4401 Zone Tested MISS
 Anchor Length 7' Drill Pipe Run 4254 Mud Wt. 9.2
 Top Packer Depth 4389 Drill Collars Run 119 Vis 59
 Bottom Packer Depth 4394 Wt. Pipe Run --- WL 8.0
 Total Depth 4401 Chlorides 6,400 ppm System LCM ---

Blow Description IF-BOB 16 mms
ISI-Surface Blow
FF-BOB 21 mms
FSI-Pulled tool

Rec	Feet of	%gas	%oil	%water	%mud
<u>10</u>	<u>0</u>				
<u>400</u>	<u>MW</u>			<u>70%</u>	<u>30%</u>

Rec Total 410' BHT 125° Gravity --- API RW --- @ --- °F Chlorides --- ppm

(A) Initial Hydrostatic 2309 Test 1250 T-On Location 0945
 (B) First Initial Flow 43 Jars 250 T-Started 1024
 (C) First Final Flow 122 Safety Joint 75 T-Open 1513
 (D) Initial Shut-In 1242 Circ Sub --- T-Pulled ~~1713~~ 1643
 (E) Second Initial Flow 138 Hourly Standby --- T-Out 1953
 (F) Second Final Flow 197 Mileage 126 RT 195.30 Comments Pulled tool after
 (G) Final Shut-In --- Sampler --- FF per geo's request
 (H) Final Hydrostatic 2229 Straddle --- Ruined Shale Packer ---

Shale Packer --- Ruined Packer ---
 Extra Packer --- Extra Copies ---
 Initial Open 30 Extra Recorder --- Sub Total 0
 Initial Shut-In 30 Day Standby --- Total 1770.30
 Final Flow 30 Accessibility --- MP/DST Disc't ---
 Final Shut-In Pulled tool Sub Total 1770.30

Approved By _____ Our Representative Braman L

Trilobite Testing Inc. shall not be liable for damaged of any kind of the property or personnel of the one for whom a test is made, or for any loss suffered or sustained, directly or indirectly, through the use of its equipment, or its statements or opinion concerning the results of any test, tools lost or damaged in the hole shall be paid for at cost by the party for whom the test is made.