



**TRILOBITE  
TESTING, INC.**

# DRILL STEM TEST REPORT

Shakespeare Oil  
202 West Main St.  
Salem, IL  
62881  
ATTN: Mark Herndon

**36-16s-34w Scott, Ks**  
**Janzen #6-36**  
Job Ticket: 56333 **DST#: 2**  
Test Start: 2014.04.06 @ 03:15:27

## GENERAL INFORMATION:

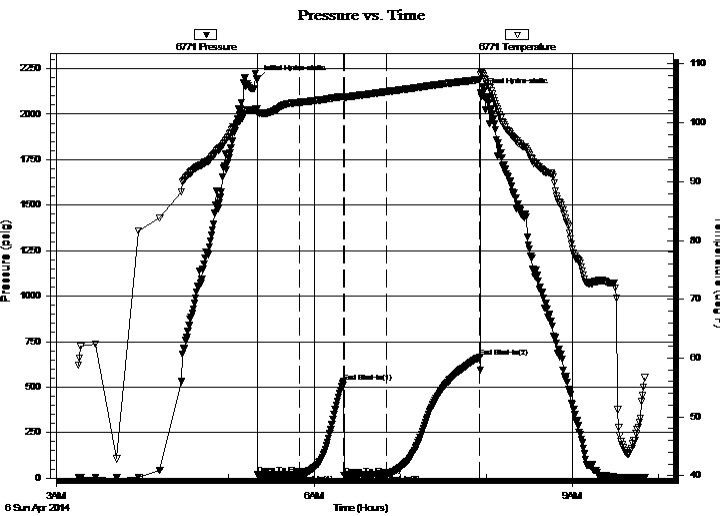
Formation: **Marmaton B-C**  
Deviated: No Whipstock: 0.00 ft (KB)  
Time Tool Opened: 05:20:27  
Time Test Ended: 09:50:27  
Interval: **4460.00 ft (KB) To 4515.00 ft (KB) (TVD)**  
Total Depth: 4515.00 ft (KB) (TVD)  
Hole Diameter: 7.88 inches Hole Condition: Fair  
Test Type: Conventional Bottom Hole (Reset)  
Tester: Shane McBride  
Unit No: 55  
Reference Elevations: 3116.00 ft (KB)  
3104.00 ft (CF)  
KB to GR/CF: 12.00 ft

## Serial #: 6771

Inside

Press @ Run Depth: 20.95 psig @ 4461.00 ft (KB) Capacity: 8000.00 psig  
Start Date: 2014.04.06 End Date: 2014.04.06 Last Calib.: 2014.04.06  
Start Time: 03:15:27 End Time: 09:50:27 Time On Btm: 2014.04.06 @ 05:20:12  
Time Off Btm: 2014.04.06 @ 07:55:57

TEST COMMENT: 1 1/2" in blow  
No return  
1" in blow  
No return



## PRESSURE SUMMARY

Time (Min.)	Pressure (psig)	Temp (deg F)	Annotation
0	2192.02	102.44	Initial Hydro-static
1	18.80	101.63	Open To Flow (1)
30	18.35	103.46	Shut-In(1)
60	529.30	104.49	End Shut-In(1)
61	15.98	104.34	Open To Flow (2)
90	20.95	105.26	Shut-In(2)
156	665.99	107.33	End Shut-In(2)
156	2116.14	108.17	Final Hydro-static

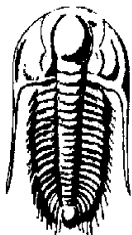
## Recovery

Length (ft)	Description	Volume (bbl)
3.00	free oil	0.04
37.00	o c m 30% o 70% m	0.52

\* Recovery from multiple tests

## Gas Rates

Choke (inches)	Pressure (psig)	Gas Rate (Mcf/d)



**TRILOBITE TESTING, INC.**

# DRILL STEM TEST REPORT

Shakespeare Oil

**36-16s-34w Scott, Ks**

202 West Main St.  
Salem, IL  
62881  
ATTN: Mark Herndon

**Janzen #6-36**

Job Ticket: 56333      **DST#: 2**  
Test Start: 2014.04.06 @ 03:15:27

## GENERAL INFORMATION:

Formation: **Marmaton B-C**

Deviated: No Whipstock: 0.00 ft (KB)

Time Tool Opened: 05:20:27

Time Test Ended: 09:50:27

Test Type: Conventional Bottom Hole (Reset)

Tester: Shane McBride

Unit No: 55

Interval: **4460.00 ft (KB) To 4515.00 ft (KB) (TVD)**

Reference Elevations: 3116.00 ft (KB)

Total Depth: 4515.00 ft (KB) (TVD)

3104.00 ft (CF)

Hole Diameter: 7.88 inches Hole Condition: Fair

KB to GR/CF: 12.00 ft

**Serial #: 8844      Outside**

Press @ Run Depth:                      psig @ 4461.00 ft (KB)

Capacity: 8000.00 psig

Start Date: 2014.04.06

End Date: 2014.04.06

Last Calib.: 2014.04.06

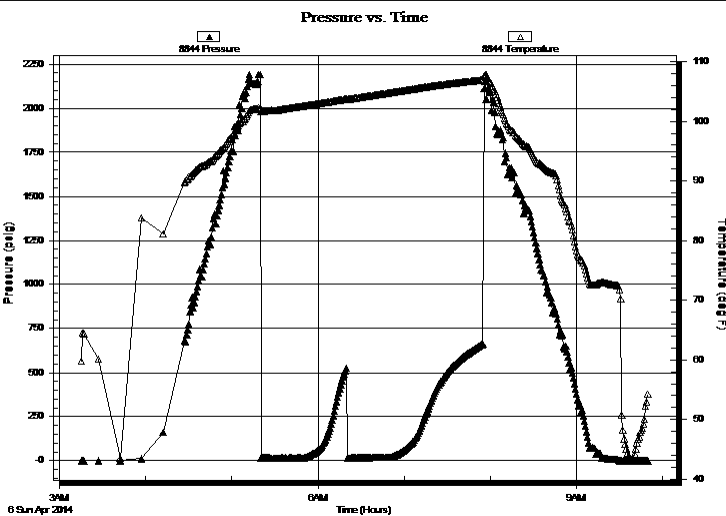
Start Time: 03:15:22

End Time: 09:49:52

Time On Btm:

Time Off Btm:

TEST COMMENT: 1 1/2" in blow  
No return  
1" in blow  
No return



## PRESSURE SUMMARY

Time (Min.)	Pressure (psig)	Temp (deg F)	Annotation

## Recovery

Length (ft)	Description	Volume (bbl)
3.00	free oil	0.04
37.00	o c m 30% o 70% m	0.52

## Gas Rates

Choke (inches)	Pressure (psig)	Gas Rate (Mcf/d)

\* Recovery from multiple tests



**TRILOBITE  
TESTING, INC.**

# DRILL STEM TEST REPORT

**FLUID SUMMARY**

Shakespeare Oil

**36-16s-34w Scott, Ks**

202 West Main St.  
Salem, IL  
62881

**Janzen #6-36**

Job Ticket: 56333

**DST#: 2**

ATTN: Mark Herndon

Test Start: 2014.04.06 @ 03:15:27

## Mud and Cushion Information

Mud Type: Gel Chem

Cushion Type:

Oil API:

0 deg API

Mud Weight: 9.00 lb/gal

Cushion Length:

ft

Water Salinity:

0 ppm

Viscosity: 57.00 sec/qt

Cushion Volume:

bbbl

Water Loss: 8.75 in<sup>3</sup>

Gas Cushion Type:

Resistivity: 0.00 ohm.m

Gas Cushion Pressure:

psig

Salinity: 7000.00 ppm

Filter Cake: 1.00 inches

## Recovery Information

Recovery Table

Length ft	Description	Volume bbbl
3.00	free oil	0.042
37.00	o c m 30%o 70%m	0.519

Total Length: 40.00 ft      Total Volume: 0.561 bbl

Num Fluid Samples: 0

Num Gas Bombs: 0

Serial #:

Laboratory Name:

Laboratory Location:

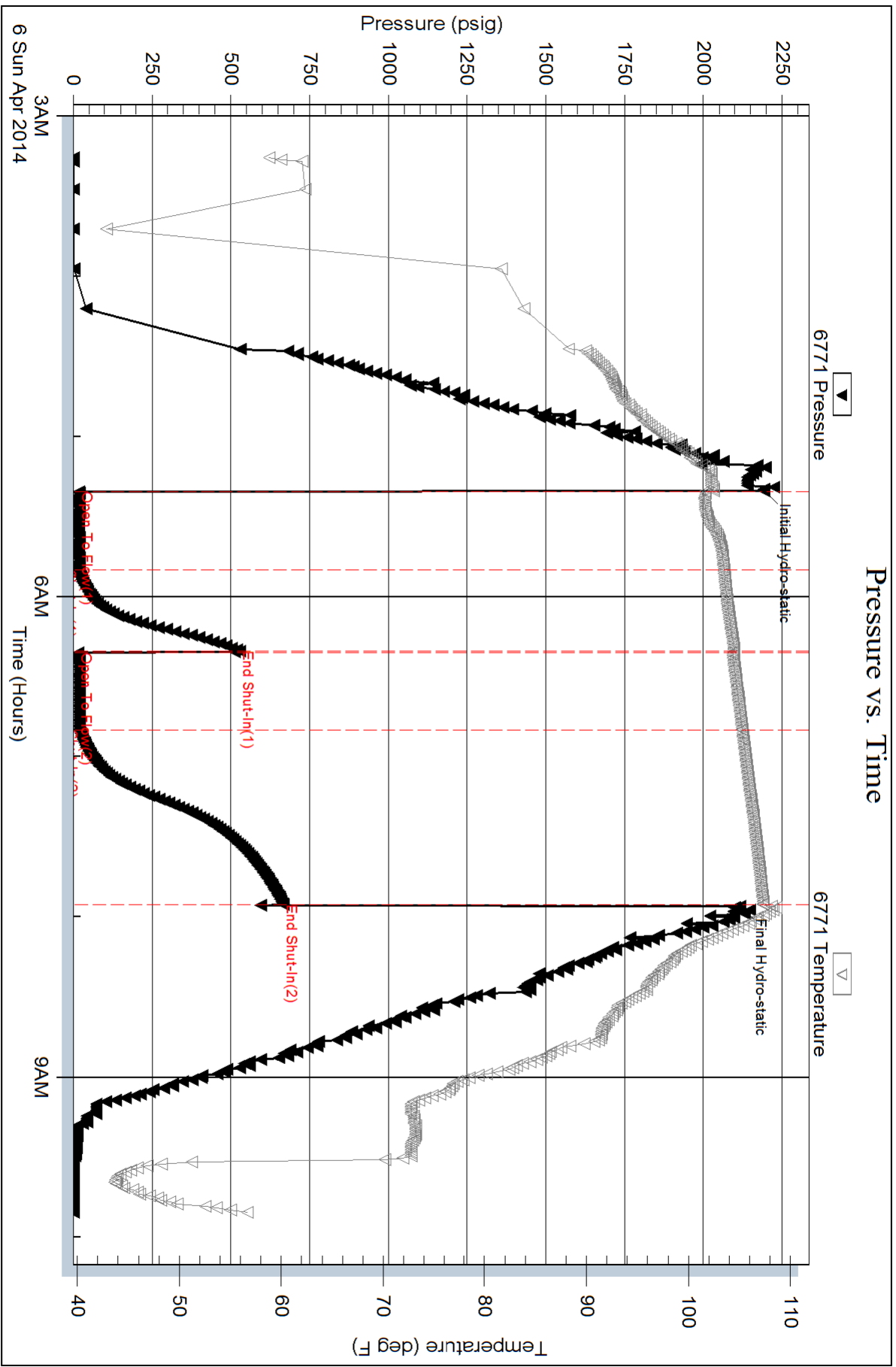
Recovery Comments:

Serial #: 6771

Inside Shakespeare Oil

Janzen #6-36

DST Test Number: 2



Serial #: 8844

Outside Shakespeare Oil

Janzen #6-36

DST Test Number: 2

