



DRILL STEM TEST REPORT

Prepared For: **F.G.Holl Company L.L.C.**

9431 Eastr Central Suite 100
Wichita, Kansas 67206-2563

ATTN: Rene Husted

Axman "A" Unit #2-24

23-17s-15w Barton

Start Date: 2014.05.02 @ 00:00:00

End Date:

Job Ticket #: 19237

DST #: 3

Superior Testers Enterprises LLC
PO Box 138 Great Bend KS 67530
1-800-792-6902

Printed: 2014.05.02 @ 11:58:06



DRILL STEM TEST REPORT

F.G.Holl Company L.L.C.

23-17s-15w Barton

9431 East Central Suite 100
Wichita, Kansas 67206-2563

Axman "A" Unit #2-24

Job Ticket: 19237

DST#: 3

ATTN: Rene Husted

Test Start: 2014.05.02 @ 00:00:00

GENERAL INFORMATION:

Formation: **Kansas City "H & I"**

Deviated: No Whipstock: ft (KB)

Time Tool Opened:

Time Test Ended:

Test Type: Conventional Bottom Hole (Initial)

Tester: Gene Budig

Unit No: 3335

Interval: 3332.00 ft (KB) To 3376.00 ft (KB) (TVD)

Reference Elevations: 1914.00 ft (KB)

Total Depth: 3376.00 ft (KB) (TVD)

1906.00 ft (CF)

Hole Diameter: 7.78 inches Hole Condition: Fair

KB to GR/CF: 8.00 ft

Serial #: 8525 Outside

Press@RunDepth: 70.32 psig @ 3373.00 ft (KB)

Capacity: 5000.00 psig

Start Date: 2014.05.02 End Date: 2014.05.02

Last Calib.: 2014.05.02

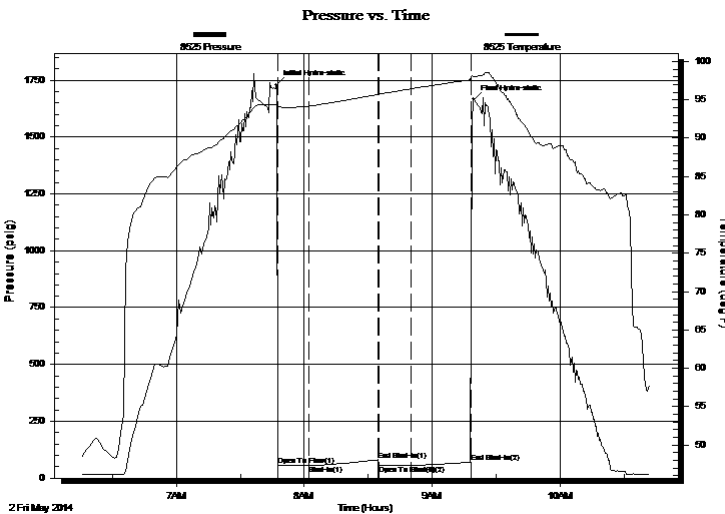
Start Time: 06:15:00 End Time: 10:42:00

Time On Btm: 2014.05.02 @ 07:47:00

Time Off Btm: 2014.05.02 @ 09:19:30

TEST COMMENT: 1st Opening 15 Minutes weak intermittant blow through out
1st Shut-In 30 Minutes no blow back
2nd Opening 15 Minutes-No blow
2nd Shut-In 30 Minutes-No blow back

PRESSURE SUMMARY



Time (Min.)	Pressure (psig)	Temp (deg F)	Annotation
0	1729.81	94.36	Initial Hydro-static
1	54.47	94.10	Open To Flow (1)
15	55.99	94.18	Shut-In(1)
48	80.56	95.70	End Shut-In(1)
48	55.73	95.73	Open To Flow (2)
63	55.58	96.43	Shut-In(2)
91	70.32	97.61	End Shut-In(2)
93	1665.27	97.97	Final Hydro-static

Recovery

Length (ft)	Description	Volume (bbl)
1.00	mud very few specks of oil	0.01

Gas Rates

Choke (inches)	Pressure (psig)	Gas Rate (Mcf/d)



DRILL STEM TEST REPORT

F.G.Holl Company L.L.C.

23-17s-15w Barton

9431 East Central Suite 100
Wichita, Kansas 67206-2563

Axman "A" Unit #2-24

Job Ticket: 19237

DST#: 3

ATTN: Rene Husted

Test Start: 2014.05.02 @ 00:00:00

GENERAL INFORMATION:

Formation: **Kansas City "H & I"**

Deviated: No Whipstock: ft (KB)

Time Tool Opened:

Time Test Ended:

Test Type: Conventional Bottom Hole (Initial)

Tester: Gene Budig

Unit No: 3335

Interval: 3332.00 ft (KB) To 3376.00 ft (KB) (TVD)

Reference Elevations: 1914.00 ft (KB)

Total Depth: 3376.00 ft (KB) (TVD)

1906.00 ft (CF)

Hole Diameter: 7.78 inches Hole Condition: Fair

KB to GR/CF: 8.00 ft

Serial #: 6666

Inside

Press@RunDepth: 63.12 psig @ 3372.00 ft (KB)

Capacity: 5000.00 psig

Start Date: 2014.05.02 End Date: 2014.05.02

Last Calib.: 2014.05.02

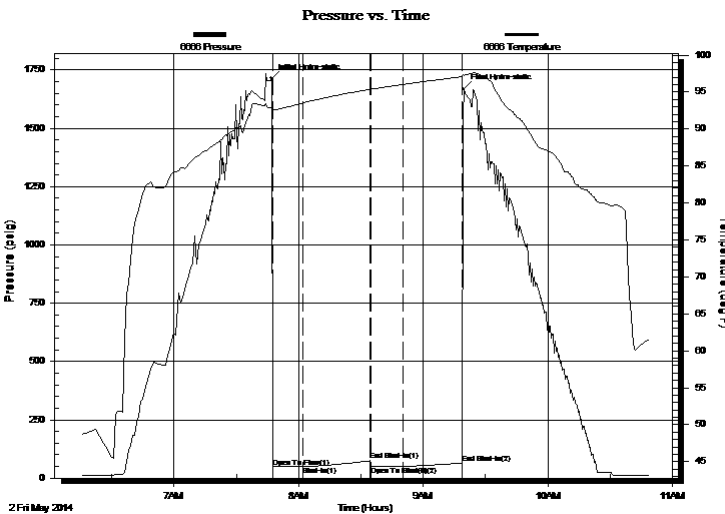
Start Time: 06:15:00 End Time: 10:49:00

Time On Btm: 2014.05.02 @ 07:47:00

Time Off Btm: 2014.05.02 @ 09:19:30

TEST COMMENT: 1st Opening 15 Minutes weak intermittant blow through out
1st Shut-In 30 Minutes no blow back
2nd Opening 15 Minutes-No blow
2nd Shut-In 30 Minutes-No blow back

PRESSURE SUMMARY



Time (Min.)	Pressure (psig)	Temp (deg F)	Annotation
0	1714.94	92.90	Initial Hydro-static
1	47.90	92.56	Open To Flow (1)
15	49.94	93.53	Shut-In(1)
48	74.72	95.37	End Shut-In(1)
48	49.04	95.38	Open To Flow (2)
63	49.50	96.03	Shut-In(2)
92	63.12	97.06	End Shut-In(2)
93	1668.85	97.30	Final Hydro-static

Recovery

Length (ft)	Description	Volume (bbl)
1.00	mud very few specks of oil	0.01

Gas Rates

Choke (inches)	Pressure (psig)	Gas Rate (Mcf/d)



DRILL STEM TEST REPORT

TOOL DIAGRAM

F.G.Holl Company L.L.C.

23-17s-15w Barton

9431 East Central Suite 100
Wichita, Kansas 67206-2563

Axman "A" Unit #2-24

Job Ticket: 19237

DST#: 3

ATTN: Rene Husted

Test Start: 2014.05.02 @ 00:00:00

Tool Information

Drill Pipe:	Length: 3312.00 ft	Diameter: 3.80 inches	Volume: 46.46 bbl	Tool Weight: 2000.00 lb
Heavy Wt. Pipe:	Length: 0.00 ft	Diameter: 2.86 inches	Volume: 0.00 bbl	Weight set on Packer: 20000.00 lb
Drill Collar:	Length: 0.00 ft	Diameter: 2.25 inches	Volume: 0.00 bbl	Weight to Pull Loose: 62000.00 lb
			<u>Total Volume: 46.46 bbl</u>	Tool Chased 0.00 ft
Drill Pipe Above KB:	8.00 ft			String Weight: Initial 52000.00 lb
Depth to Top Packer:	3332.00 ft			Final 52000.00 lb
Depth to Bottom Packer:	ft			
Interval between Packers:	44.00 ft			
Tool Length:	72.00 ft			
Number of Packers:	2	Diameter: 6.75 inches		

Tool Comments:

Tool Description	Length (ft)	Serial No.	Position	Depth (ft)	Accum. Lengths
Shut-In Tool	5.00			3309.00	
Hydraulic Tool	5.00			3314.00	
Jars	6.00			3320.00	
Safety Joint	2.00			3322.00	
Top Packer	5.00			3327.00	
Packer	5.00			3332.00	28.00 Bottom Of Top Packer
Anchor	39.00			3371.00	
Recorder	1.00	6666	Inside	3372.00	
Recorder	1.00	8525	Outside	3373.00	
Bull Plug	3.00			3376.00	44.00 Anchor Tool
Total Tool Length:	72.00				



DRILL STEM TEST REPORT

FLUID SUMMARY

F.G.Holl Company L.L.C.

23-17s-15w Barton

9431 East Central Suite 100
Wichita, Kansas 67206-2563

Axman "A" Unit #2-24

Job Ticket: 19237

DST#: 3

ATTN: Rene Husted

Test Start: 2014.05.02 @ 00:00:00

Mud and Cushion Information

Mud Type: Gel Chem
Mud Weight: 9.00 lb/gal
Viscosity: 66.00 sec/qt
Water Loss: 7.20 in³
Resistivity: ohm.m
Salinity: 4100.00 ppm
Filter Cake: 1.00 inches

Cushion Type:
Cushion Length: ft
Cushion Volume: bbl
Gas Cushion Type:
Gas Cushion Pressure: psig

Oil API: deg API
Water Salinity: ppm

Recovery Information

Recovery Table

Length ft	Description	Volume bbl
1.00	mud very few specks of oil	0.014

Total Length: 1.00 ft Total Volume: 0.014 bbl

Num Fluid Samples: 0

Num Gas Bombs: 0

Serial #:

Laboratory Name:

Laboratory Location:

Recovery Comments:

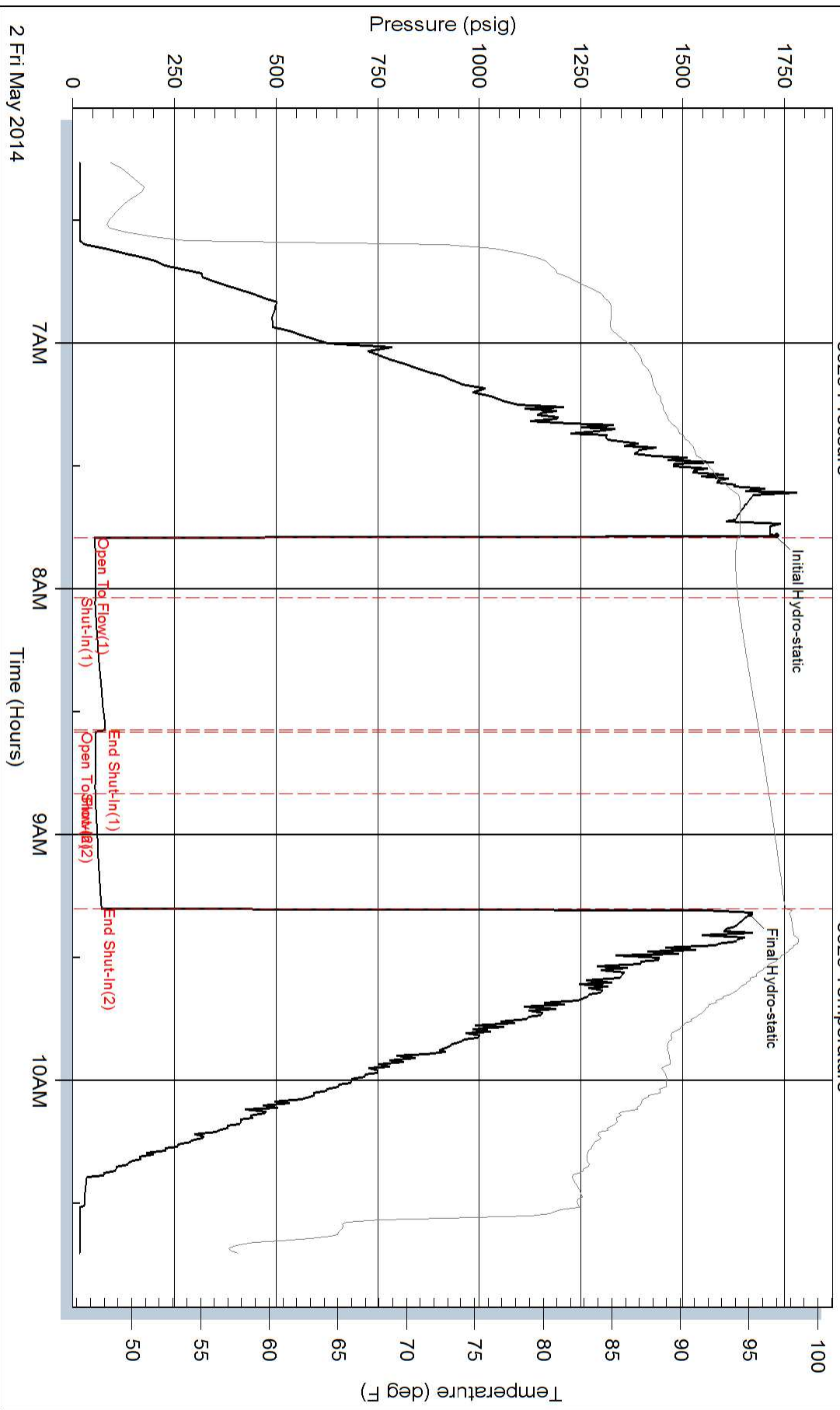
Serial #: 8525

Outside F.G.Holl Company L.L.C.

Axman "A" Unit #2-24

DST Test Number: 3

Pressure vs. Time



Serial #: 6666

Inside

F.G.Holl Company L.L.C.

Axman "A" Unit #2-24

DST Test Number: 3

Pressure vs. Time

