



DRILL STEM TEST REPORT

Prepared For: **F.G.Holl Company L.L.C.**

9431 Eastr Central Suite 100
Wichita, Kansas 67206-2563

ATTN: Rene Husted

Axman "A" Unit #2-24

23-17s-15w Barton

Start Date: 2014.05.03 @ 00:00:00

End Date:

Job Ticket #: 19238

DST #: 4

Superior Testers Enterprises LLC
PO Box 138 Great Bend KS 67530
1-800-792-6902

Printed: 2014.05.03 @ 02:43:51



DRILL STEM TEST REPORT

F.G.Holl Company L.L.C.

23-17s-15w Barton

9431 East Central Suite 100
Wichita, Kansas 67206-2563

Axman "A" Unit #2-24

Job Ticket: 19238

DST#: 4

ATTN: Rene Husted

Test Start: 2014.05.03 @ 00:00:00

GENERAL INFORMATION:

Formation: **Kansas City "J-K &**

Deviated: No Whipstock: ft (KB)

Time Tool Opened:

Time Test Ended:

Test Type: Conventional Bottom Hole (Initial)

Tester: Gene Budig

Unit No: 3335

Interval: 3374.00 ft (KB) To 3432.00 ft (KB) (TVD)

Reference Elevations: 1914.00 ft (KB)

Total Depth: 3432.00 ft (KB) (TVD)

1906.00 ft (CF)

Hole Diameter: 7.78 inches Hole Condition: Fair

KB to GR/CF: 8.00 ft

Serial #: 8525 Outside

Press@RunDepth: 69.23 psig @ 3424.92 ft (KB)

Capacity: 5000.00 psig

Start Date: 2014.05.03

End Date: 2014.05.03

Last Calib.: 2014.05.03

Start Time: 08:30:00

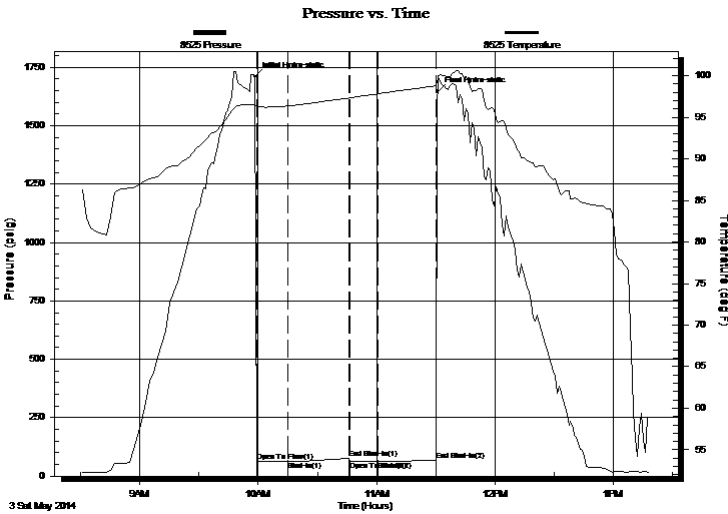
End Time: 13:19:00

Time On Btm: 2014.05.03 @ 09:58:30

Time Off Btm: 2014.05.03 @ 11:31:00

TEST COMMENT: 1st Opening 15 Minutes Weak blow mfor 3 mminutes and died
1st Shut-In 30 Minutes no blow back
2nd Opening 15 Minutes-No blow
2nd Shut-In 30 Minutes No blow b ack

PRESSURE SUMMARY



Time (Min.)	Pressure (psig)	Temp (deg F)	Annotation
0	1709.65	96.54	Initial Hydro-static
1	61.48	96.26	Open To Flow (1)
17	62.24	96.35	Shut-In(1)
48	76.03	97.32	End Shut-In(1)
48	62.01	97.33	Open To Flow (2)
62	62.42	97.81	Shut-In(2)
92	69.23	98.77	End Shut-In(2)
93	1645.75	99.52	Final Hydro-static

Recovery

Length (ft)	Description	Volume (bbl)
1.00	drilling mud	0.01

Gas Rates

Choke (inches)	Pressure (psig)	Gas Rate (Mcf/d)



DRILL STEM TEST REPORT

F.G.Holl Company L.L.C.

23-17s-15w Barton

9431 East Central Suite 100
Wichita, Kansas 67206-2563

Axman "A" Unit #2-24

Job Ticket: 19238

DST#: 4

ATTN: Rene Husted

Test Start: 2014.05.03 @ 00:00:00

GENERAL INFORMATION:

Formation: **Kansas City "J-K &**

Deviated: No Whipstock: ft (KB)

Time Tool Opened:

Time Test Ended:

Test Type: Conventional Bottom Hole (Initial)

Tester: Gene Budig

Unit No: 3335

Interval: 3374.00 ft (KB) To 3432.00 ft (KB) (TVD)

Reference Elevations: 1914.00 ft (KB)

Total Depth: 3432.00 ft (KB) (TVD)

1906.00 ft (CF)

Hole Diameter: 7.78 inches Hole Condition: Fair

KB to GR/CF: 8.00 ft

Serial #: 6666 Inside

Press@RunDepth: 63.28 psig @ 3423.92 ft (KB)

Capacity: 5000.00 psig

Start Date: 2014.05.03 End Date: 2014.05.03

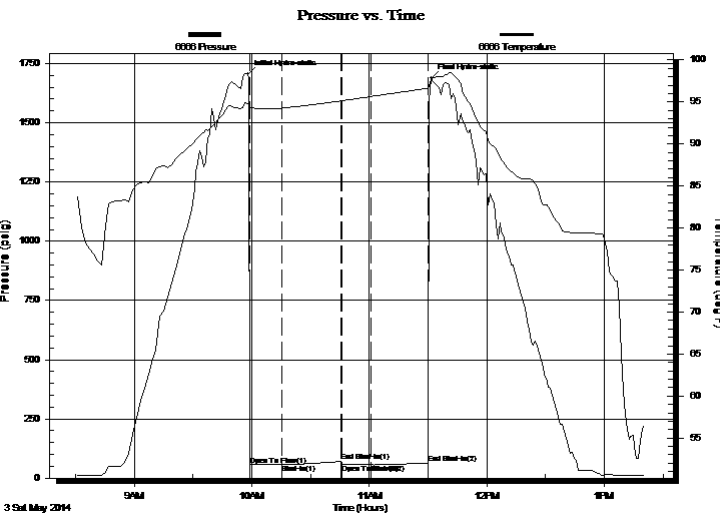
Last Calib.: 2014.05.03

Start Time: 08:30:00 End Time: 13:20:30

Time On Btm: 2014.05.03 @ 09:58:00

Time Off Btm: 2014.05.03 @ 11:31:30

TEST COMMENT: 1st Opening 15 Minutes Weak blow mfor 3 mminutes and died
1st Shut-In 30 Minutes no blow back
2nd Opening 15 Minutes-No blow
2nd Shut-In 30 Minutes No blow b ack



PRESSURE SUMMARY

Time (Min.)	Pressure (psig)	Temp (deg F)	Annotation
0	1704.05	94.76	Initial Hydro-static
1	55.75	94.30	Open To Flow (1)
18	56.70	94.28	Shut-In(1)
48	70.05	95.13	End Shut-In(1)
48	56.26	95.14	Open To Flow (2)
63	56.71	95.65	Shut-In(2)
92	63.28	96.64	End Shut-In(2)
94	1687.68	97.72	Final Hydro-static

Recovery

Length (ft)	Description	Volume (bbl)
1.00	drilling mud	0.01

Gas Rates

Choke (inches)	Pressure (psig)	Gas Rate (Mcf/d)



DRILL STEM TEST REPORT

TOOL DIAGRAM

F.G.Holl Company L.L.C.

23-17s-15w Barton

9431 East Central Suite 100
Wichita, Kansas 67206-2563

Axman "A" Unit #2-24

Job Ticket: 19238

DST#: 4

ATTN: Rene Husted

Test Start: 2014.05.03 @ 00:00:00

Tool Information

Drill Pipe:	Length: 3374.00 ft	Diameter: 3.80 inches	Volume: 47.33 bbl	Tool Weight: 2000.00 lb
Heavy Wt. Pipe:	Length: 0.00 ft	Diameter: 2.86 inches	Volume: 0.00 bbl	Weight set on Packer: 20000.00 lb
Drill Collar:	Length: 0.00 ft	Diameter: 2.25 inches	Volume: 0.00 bbl	Weight to Pull Loose: 68000.00 lb
			<u>Total Volume: 47.33 bbl</u>	Tool Chased 0.00 ft
Drill Pipe Above KB:	28.00 ft			String Weight: Initial 52000.00 lb
Depth to Top Packer:	3374.00 ft			Final 52000.00 lb
Depth to Bottom Packer:	ft			
Interval between Packers:	53.92 ft			
Tool Length:	81.92 ft			
Number of Packers:	2	Diameter: 6.75 inches		

Tool Comments:

Tool Description

Tool Description	Length (ft)	Serial No.	Position	Depth (ft)	Accum. Lengths
Shut-In Tool	5.00			3351.00	
Hydraulic Tool	5.00			3356.00	
Jars	6.00			3362.00	
Safety Joint	2.00			3364.00	
Top Packer	5.00			3369.00	
Packer	5.00			3374.00	28.00 Bottom Of Top Packer
Anchor	6.00			3380.00	
Change Over Sub	0.75			3380.75	
Drill Pipe	31.42			3412.17	
Change Over Sub	0.75			3412.92	
Anchor	10.00			3422.92	
Recorder	1.00	6666	Inside	3423.92	
Recorder	1.00	8525	Outside	3424.92	
Bull Plug	3.00			3427.92	53.92 Anchor Tool

Total Tool Length: 81.92



DRILL STEM TEST REPORT

FLUID SUMMARY

F.G.Holl Company L.L.C.

23-17s-15w Barton

9431 East Central Suite 100
Wichita, Kansas 67206-2563

Axman "A" Unit #2-24

Job Ticket: 19238

DST#: 4

ATTN: Rene Husted

Test Start: 2014.05.03 @ 00:00:00

Mud and Cushion Information

Mud Type: Gel Chem

Cushion Type:

Oil API:

deg API

Mud Weight: 9.00 lb/gal

Cushion Length:

ft

Water Salinity:

ppm

Viscosity: 55.00 sec/qt

Cushion Volume:

bbbl

Water Loss: 9.60 in³

Gas Cushion Type:

Resistivity: ohm.m

Gas Cushion Pressure:

psig

Salinity: 7300.00 ppm

Filter Cake: 1.00 inches

Recovery Information

Recovery Table

Length ft	Description	Volume bbl
1.00	drilling mud	0.014

Total Length: 1.00 ft Total Volume: 0.014 bbl

Num Fluid Samples: 0

Num Gas Bombs: 0

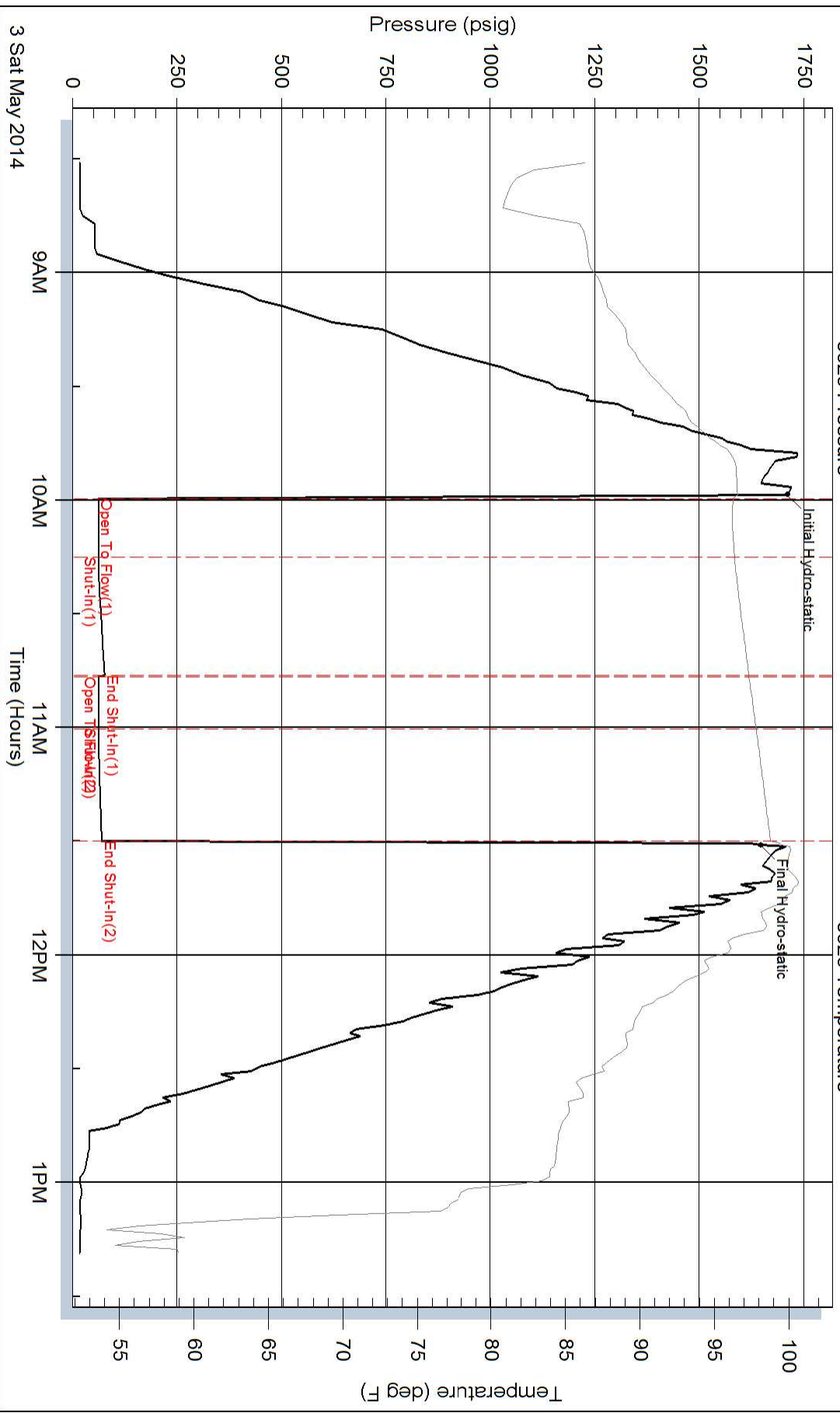
Serial #:

Laboratory Name:

Laboratory Location:

Recovery Comments:

Pressure vs. Time



Pressure vs. Time

