



**TRILOBITE
TESTING, INC**

DRILL STEM TEST REPORT

White Exploration, Inc
1635 N Waterfront Pkw y
Ste 100
Wichita, Ks
ATTN: Paul Gunzleman

20 13s 42w Wallace Ks

Gunzleman #1

Job Ticket: 57641

DST#: 1

Test Start: 2014.04.30 @ 13:55:00

GENERAL INFORMATION:

Formation: **Morrow Sand**

Deviated: No Whipstock: ft (KB)

Time Tool Opened: 16:29:00

Time Test Ended: 22:50:00

Test Type: Conventional Bottom Hole (Initial)

Tester: Bradley Walter

Unit No: 69

Interval: 4959.00 ft (KB) To 5002.00 ft (KB) (TVD)

Reference Elevations: 3794.00 ft (KB)

Total Depth: 5210.00 ft (KB) (TVD)

3783.00 ft (CF)

Hole Diameter: 7.88 inches Hole Condition: Good

KB to GR/CF: 11.00 ft

Serial #: 8522 Outside

Press@RunDepth: 65.11 psig @ 4960.00 ft (KB)

Capacity: 8000.00 psig

Start Date: 2014.04.30

End Date:

2014.04.30

Last Calib.:

2014.04.30

Start Time: 13:55:05

End Time:

22:50:00

Time On Btm:

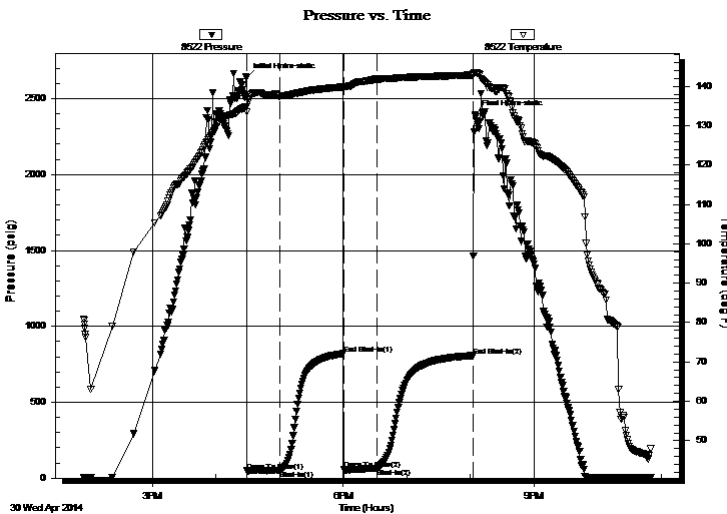
2014.04.30 @ 16:28:45

Time Off Btm:

2014.04.30 @ 20:04:15

TEST COMMENT: IF: 1/2" receded to a Surface blow .
IS: No return.
FF: No blow .
FS: No return.

PRESSURE SUMMARY



Time (Min.)	Pressure (psig)	Temp (deg F)	Annotation
0	2641.33	134.92	Initial Hydro-static
1	47.33	133.42	Open To Flow (1)
32	52.14	137.56	Shut-In(1)
92	820.23	139.89	End Shut-In(1)
92	55.24	139.82	Open To Flow (2)
123	65.11	141.84	Shut-In(2)
214	807.16	142.91	End Shut-In(2)
216	2391.89	143.55	Final Hydro-static

Recovery

Length (ft)	Description	Volume (bbl)
30.00	Mud 100m	0.15

Gas Rates

Choke (inches)	Pressure (psig)	Gas Rate (Mcf/d)



**TRILOBITE
TESTING, INC**

DRILL STEM TEST REPORT

FLUID SUMMARY

White Exploration, Inc
1635 N Waterfront Pkwy
Ste 100
Wichita, Ks
ATTN: Paul Gunzleman

20 13s 42w Wallace Ks
Gunzleman #1
Job Ticket: 57641 **DST#: 1**
Test Start: 2014.04.30 @ 13:55:00

Mud and Cushion Information

Mud Type: Gel Chem	Cushion Type:	Oil API:	0 deg API
Mud Weight: 9.00 lb/gal	Cushion Length: ft	Water Salinity:	0 ppm
Viscosity: 60.00 sec/qt	Cushion Volume: bbl		
Water Loss: 7.20 in ³	Gas Cushion Type:		
Resistivity: ohm.m	Gas Cushion Pressure: psig		
Salinity: 3500.00 ppm			
Filter Cake: 1.00 inches			

Recovery Information

Recovery Table

Length ft	Description	Volume bbl
30.00	Mud 100m	0.148

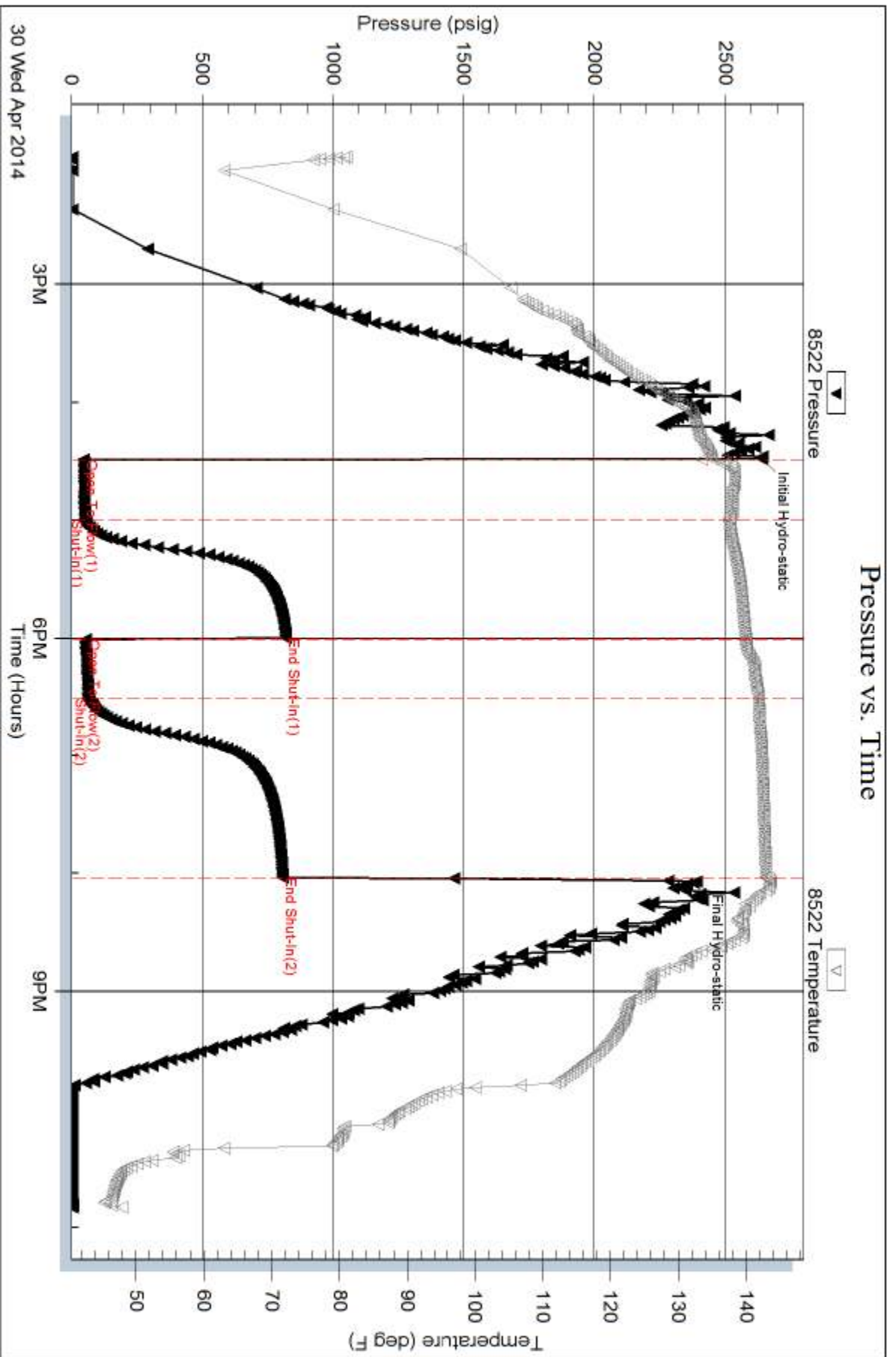
Total Length: 30.00 ft Total Volume: 0.148 bbl
Num Fluid Samples: 0 Num Gas Bombs: 0 Serial #:
Laboratory Name: Laboratory Location:
Recovery Comments:

Serial #: 8522

Outside White Exploration, Inc

Gunzleman #1

DST Test Number: 1



Triobite Testing, Inc

Ref. No: 57641

Printed: 2014.05.01 @ 07:57:45

