



## DRILL STEM TEST REPORT

Prepared For: **Raydon Exploration Inc.**  
1601 NW Expressway Ste.#1300  
Oklahoma City, OK 73118

ATTN: Ed Grieves

**28-33s-30w Meade,KS**

**Kansas-Smith Farms #1-28**

Start Date: 2014.02.10 @ 23:55:00

End Date: 2014.02.11 @ 18:44:00

Job Ticket #: 55708                      DST #: 1

Trilobite Testing, Inc  
PO Box 362 Hays, KS 67601  
ph: 785-625-4778 fax: 785-625-5620

Printed: 2014.02.18 @ 11:40:55



**TRILOBITE  
TESTING, INC**

# DRILL STEM TEST REPORT

Raydon Exploration Inc.

**Kansas-Smith Farms #1-28**

1601 NW Expressway Ste.#1300  
Oklahoma City, OK 73118

**28-33s-30w Meade,KS**

Job Ticket: 55708

**DST#: 1**

ATTN: Ed Grieves

Test Start: 2014.02.10 @ 23:55:00

## GENERAL INFORMATION:

Formation: **Morrow**

Deviated: No Whipstock: ft (KB)

Time Tool Opened: 11:02:30

Time Test Ended: 18:44:00

Test Type: Conventional Bottom Hole (Initial)

Tester: Cornelio Landa III

Unit No: 60

Interval: **5730.00 ft (KB) To 5790.00 ft (KB) (TVD)**

Reference Elevations: 2723.00 ft (KB)

Total Depth: 5790.00 ft (KB) (TVD)

2713.00 ft (CF)

Hole Diameter: 7.88 inches Hole Condition: Fair

KB to GR/CF: 10.00 ft

**Serial #: 8356**

**Outside**

Press@RunDepth: 56.23 psig @ 5732.00 ft (KB)

Capacity: 8000.00 psig

Start Date: 2014.02.10

End Date:

2014.02.11

Last Calib.:

2014.02.11

Start Time: 23:55:05

End Time:

18:43:59

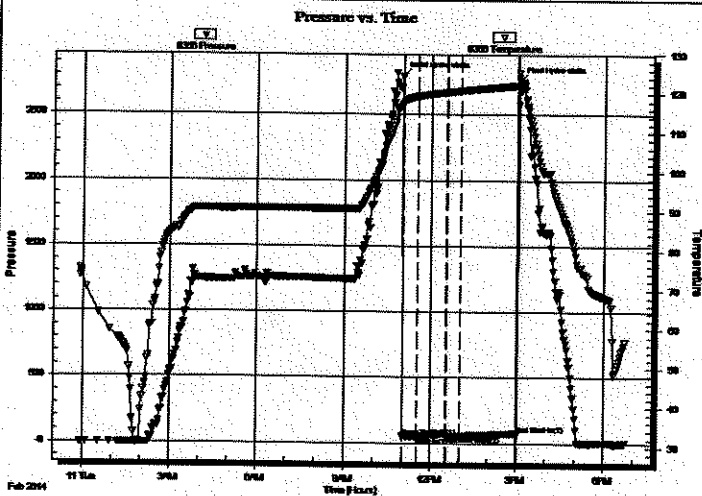
Time On Btm:

2014.02.11 @ 11:01:00

Time Off Btm:

2014.02.11 @ 15:03:30

**TEST COMMENT:** IF: 4 1/4" of Blow  
IS: Bled off in 2 min.-No return  
FF: Weak surface blow -Died in 25 min.  
FS: No return



## PRESSURE SUMMARY

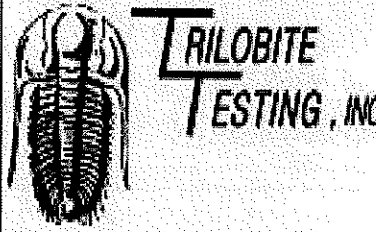
Time (Min.)	Pressure (psig)	Temp (deg F)	Annotation
0	2792.94	117.43	Initial Hydro-static
2	51.05	117.55	Open To Flow (1)
30	52.75	119.23	Shut-In(1)
91	74.35	120.27	End Shut-In(1)
92	53.68	120.22	Open To Flow (2)
122	56.23	120.71	Shut-In(2)
241	74.98	122.03	End Shut-In(2)
243	2761.25	123.97	Final Hydro-static

## Recovery

Length (ft)	Description	Volume (bbl)
70.00	Mud 100m	0.34

## Gas Rates

Choke (Inches)	Pressure (psig)	Gas Rate (Mcf/d)



**DRILL STEM TEST REPORT**

Raydon Exploration Inc. **Kansas-Smith Farms #1-28**  
 1601 NW Expressway Ste.#1300 **28-33s-30w Meade,KS**  
 Oklahoma City, OK 73118  
 Job Ticket: 55708 **DST#: 1**  
 ATTN: Ed Grieves Test Start: 2014.02.10 @ 23:55:00

**GENERAL INFORMATION:**

Formation: **Morrow**  
 Deviated: No Whipstock: ft (KB)  
 Time Tool Opened: 11:02:30  
 Time Test Ended: 18:44:00

Test Type: Conventional Bottom Hole (Initial)  
 Tester: Cornelio Landa III  
 Unit No: 60

Interval: **5730.00 ft (KB) To 5790.00 ft (KB) (TVD)**  
 Total Depth: 5790.00 ft (KB) (TVD)  
 Hole Diameter: 7.88 inches Hole Condition: Fair

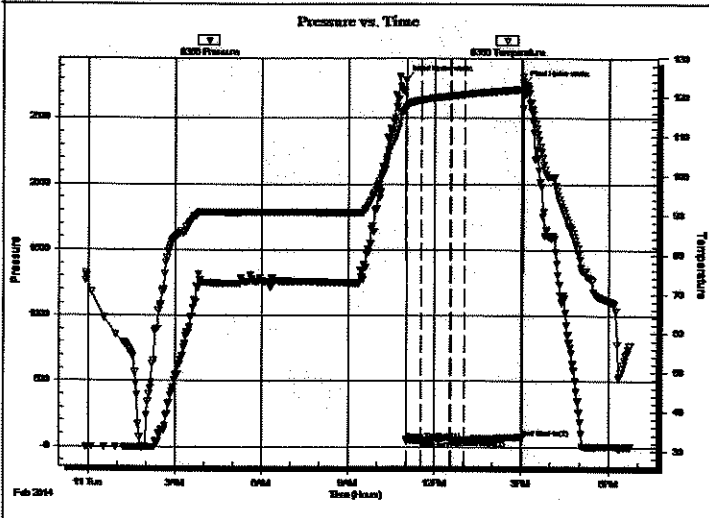
Reference Elevations: 2723.00 ft (KB)  
 2713.00 ft (CF)  
 KB to GR/CF: 10.00 ft

**Serial #: 8356 Outside**

Press@RunDepth: 56.23 psig @ 5732.00 ft (KB)  
 Start Date: 2014.02.10 End Date: 2014.02.11  
 Start Time: 23:55:05 End Time: 18:43:59

Capacity: 8000.00 psig  
 Last Calib.: 2014.02.11  
 Time On Btm: 2014.02.11 @ 11:01:00  
 Time Off Btm: 2014.02.11 @ 15:03:30

**TEST COMMENT:** IF: 4 1/4" of Blow  
 IS: Bled off in 2 min.-No return  
 FF: Weak surface blow -Died in 25 min.  
 FS: No return



**PRESSURE SUMMARY**

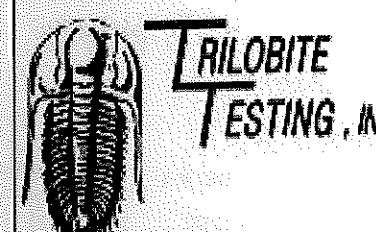
Time (Min.)	Pressure (psig)	Temp (deg F)	Annotation
0	2792.94	117.43	Initial Hydro-static
2	51.05	117.55	Open To Flow (1)
30	52.75	119.23	Shut-In(1)
91	74.35	120.27	End Shut-In(1)
92	53.68	120.22	Open To Flow (2)
122	56.23	120.71	Shut-In(2)
241	74.98	122.03	End Shut-In(2)
243	2761.25	123.97	Final Hydro-static

**Recovery**

Length (ft)	Description	Volume (bbl)
70.00	Mud 100m	0.34

**Gas Rates**

Choke (inches)	Pressure (psig)	Gas Rate (Mcf/d)



**DRILL STEM TEST REPORT**

Raydon Exploration Inc. **Kansas-Smith Farms #1-28**  
 1601 NW Expressway Ste.#1300 **28-33s-30w Meade,KS**  
 Oklahoma City, OK 73118  
 Job Ticket: 55708 **DST#: 1**  
 ATTN: Ed Grieves Test Start: 2014.02.10 @ 23:55:00

**GENERAL INFORMATION:**

Formation: **Morrow**  
 Deviated: No Whipstock: ft (KB)  
 Time Tool Opened: 11:02:30  
 Time Test Ended: 18:44:00

Test Type: Conventional Bottom Hole (Initial)  
 Tester: Cornelio Landa III  
 Unit No: 60

Interval: **5730.00 ft (KB) To 5790.00 ft (KB) (TVD)**  
 Total Depth: 5790.00 ft (KB) (TVD)  
 Hole Diameter: 7.88 inches Hole Condition: Fair

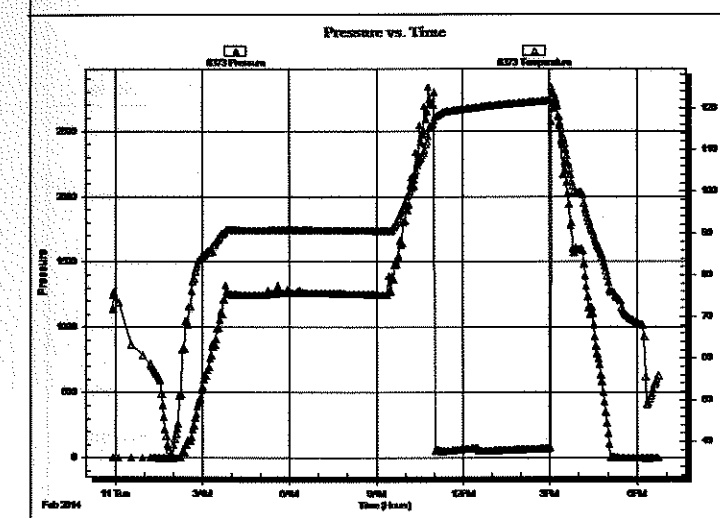
Reference Elevations: 2723.00 ft (KB)  
 2713.00 ft (CF)  
 KB to GR/CF: 10.00 ft

**Serial #: 8373 Inside**

Press@RunDepth: psig @ 5732.00 ft (KB)  
 Start Date: 2014.02.10 End Date: 2014.02.11  
 Start Time: 23:55:05 End Time: 18:43:59

Capacity: 8000.00 psig  
 Last Calib.: 2014.02.11  
 Time On Btm:  
 Time Off Btm:

**TEST COMMENT:** IF: 4 1/4" of Blow  
 IS: Bled off in 2 min.-No return  
 FF: Weak surface blow -Died in 25 min.  
 FS: No return



**PRESSURE SUMMARY**

Time (Min.)	Pressure (psig)	Temp (deg F)	Annotation
0	2792.94	117.43	Initial Hydro-static
2	51.05	117.55	Open To Flow (1)
30	52.75	119.23	Shut-In(1)
91	74.35	120.27	End Shut-In(1)
92	53.68	120.22	Open To Flow (2)
122	56.23	120.71	Shut-In(2)
241	74.98	122.03	End Shut-In(2)
243	2761.25	123.97	Final Hydro-static

**Recovery**

Length (ft)	Description	Volume (bbl)
70.00	Mud 100m	0.34

**Gas Rates**

Choke (inches)	Pressure (psig)	Gas Rate (Mcf/d)



**TRILOBITE  
TESTING, INC.**

## DRILL STEM TEST REPORT

TOOL DIAGRAM

Raydon Exploration Inc.

**Kansas-Smith Farms #1-28**

1601 NW Expressway Ste.#1300  
Oklahoma City, OK 73118

**28-33s-30w Meade,KS**

Job Ticket: 55708

**DST#: 1**

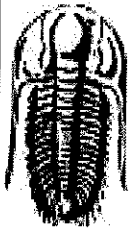
ATTN: Ed Grieves

Test Start: 2014.02.10 @ 23:55:00

### Tool Information

Drill Pipe:	Length: 5479.00 ft	Diameter: 3.80 inches	Volume: 76.86 bbl	Tool Weight: 2500.00 lb
Heavy Wt. Pipe:	Length: 0.00 ft	Diameter: 0.00 inches	Volume: 0.00 bbl	Weight set on Packer: 26000.00 lb
Drill Collar:	Length: 242.00 ft	Diameter: 2.25 inches	Volume: 1.19 bbl	Weight to Pull Loose: 12000.00 lb
			<b>Total Volume: 78.05 bbl</b>	Tool Chased 0.00 ft
Drill Pipe Above KB:	18.00 ft			String Weight: Initial 76000.00 lb
Depth to Top Packer:	5730.00 ft			Final 76000.00 lb
Depth to Bottom Packer:	ft			
Interval between Packers:	60.00 ft			
Tool Length:	87.00 ft			
Number of Packers:	2	Diameter: 6.75 inches		
Tool Comments:				

Tool Description	Length (ft)	Serial No.	Position	Depth (ft)	Accum. Lengths
Stubb	1.00			5704.00	
Shut In Tool	5.00			5709.00	
Hydraulic tool	5.00			5714.00	
Jars	5.00			5719.00	
Safety Joint	2.00			5721.00	
Packer	5.00			5726.00	27.00 Bottom Of Top Packer
Packer	4.00			5730.00	
Stubb	1.00			5731.00	
Perforations	1.00			5732.00	
Recorder	0.00	8373	Inside	5732.00	
Recorder	0.00	8356	Outside	5732.00	
Perforations	20.00			5752.00	
Change Over Sub	1.00			5753.00	
Drill Pipe	31.00			5784.00	
Change Over Sub	1.00			5785.00	
Bullnose	5.00			5790.00	60.00 Bottom Packers & Anchor
<b>Total Tool Length:</b>		<b>87.00</b>			



**TRILOBITE  
TESTING, INC**

# DRILL STEM TEST REPORT

## FLUID SUMMARY

Raydon Exploration Inc.

**Kansas-Smith Farms #1-28**

1601 NW Expressway Ste.#1300  
Oklahoma City, OK 73118

**28-33s-30w Meade,KS**

Job Ticket: 55708

**DST#: 1**

ATTN: Ed Grieves

Test Start: 2014.02.10 @ 23:55:00

### Mud and Cushion Information

Mud Type: Gel Chem	Cushion Type:	Oil API:	deg API
Mud Weight: 9.00 lb/gal	Cushion Length: ft	Water Salinity:	ppm
Viscosity: 58.00 sec/qt	Cushion Volume: bbl		
Water Loss: 4.38 in <sup>3</sup>	Gas Cushion Type:		
Resistivity: 0.00 ohm.m	Gas Cushion Pressure: psig		
Salinity: 2800.00 ppm			
Filter Cake: 1.00 inches			

### Recovery Information

Recovery Table

Length ft	Description	Volume bbl
70.00	Mud 100m	0.344

Total Length: 70.00 ft      Total Volume: 0.344 bbl

Num Fluid Samples: 0      Num Gas Bombs: 0      Serial #:

Laboratory Name:      Laboratory Location:

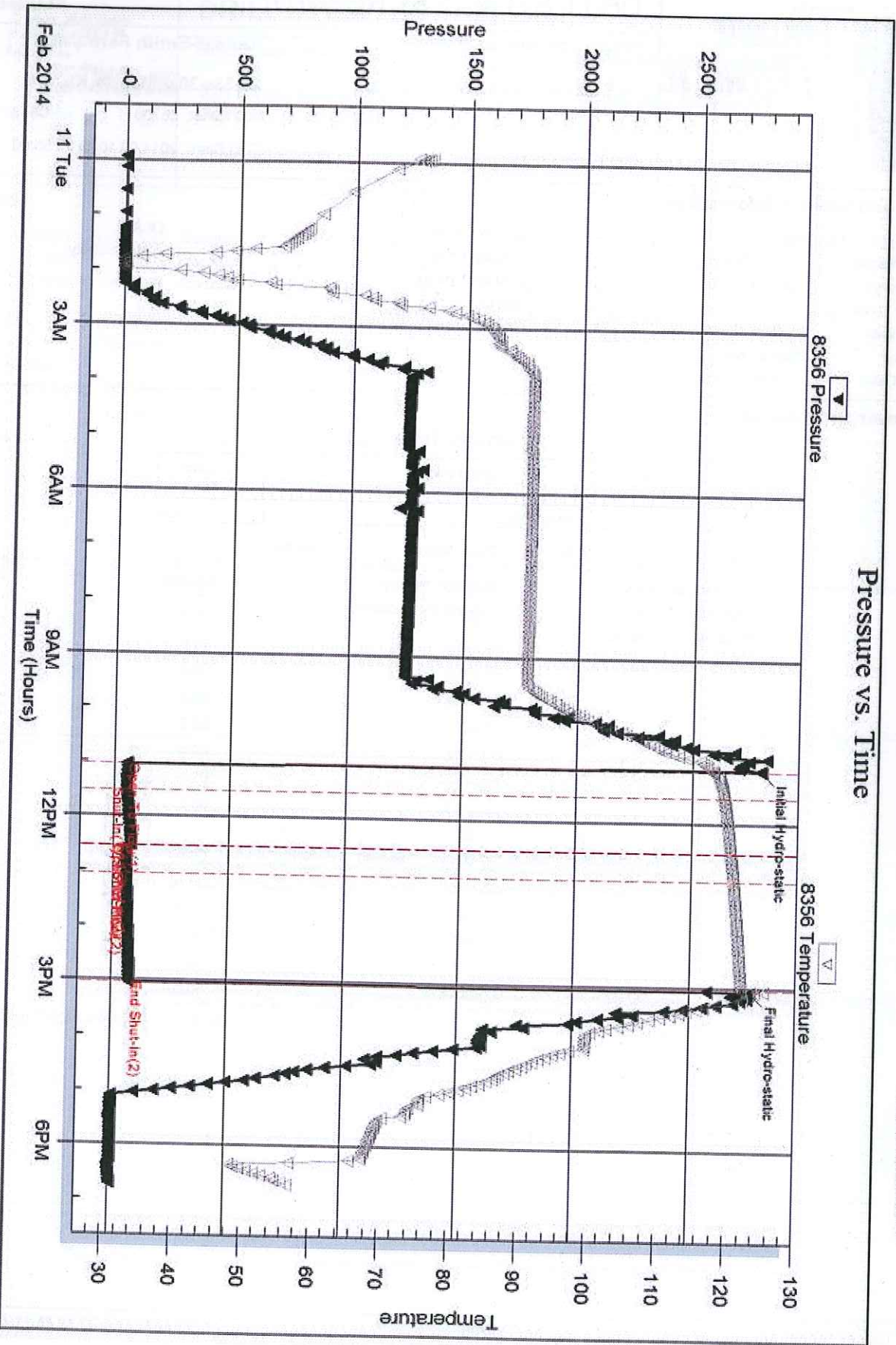
Recovery Comments:

Serial #: 8356

Outside Raydon Exploration Inc.

28-33s-30w Meade, KS

DST Test Number: 1



Tribble Testing, Inc

Ref. No: 55708

Printed: 2014.02.18 @ 11:40:57

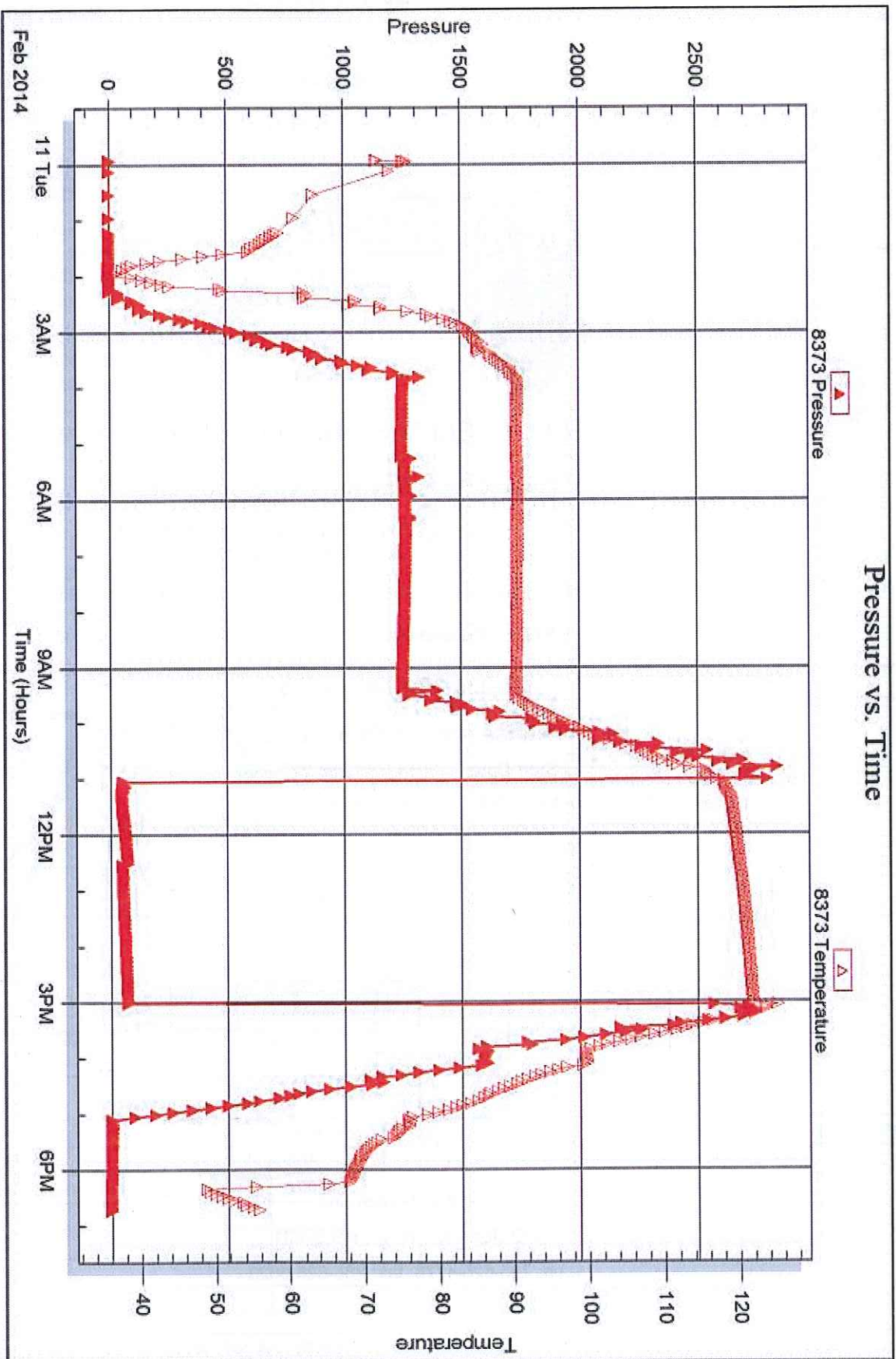
Serial #: 8373

Inside

Raydon Exploration Inc.

28-33s-30w Meade, KS

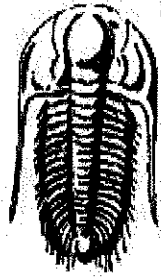
DST Test Number: 1



Tribble Testing, Inc

Ref. No: 55708

Printed: 2014.02.18 @ 11:40:57



**TRILOBITE  
TESTING, INC.**

## DRILL STEM TEST REPORT

Prepared For: **Raydon Exploration Inc.**

1601 NW Expressway Ste.#1300  
Oklahoma City, OK 73118

ATTN: Ed Grieves

**28-33s-30w Meade,KS**

**Kansas-Smith Farms #1-28**

Start Date: 2014.02.12 @ 22:43:00

End Date: 2014.02.13 @ 11:21:30

Job Ticket #: 55709                      DST #: 2

Trilobite Testing, Inc

PO Box 362 Hays, KS 67601

ph: 785-625-4778 fax: 785-625-5620

Printed: 2014.02.18 @ 11:40:17

Raydon Exploration Inc.

Kansas-Smith Farms #1-28

28-33s-30w Meade,KS

DST # 2

Chester

2014.02.12





**TRILOBITE  
TESTING, INC**

## DRILL STEM TEST REPORT

Raydon Exploration Inc.

1601 NW Expressway Ste.#1300  
Oklahoma City, OK 73118

ATTN: Ed Grieves

**Kansas-Smith Farms #1-28**

**28-33s-30w Meade,KS**

Job Ticket: 55709

DST#: 2

Test Start: 2014.02.12 @ 22:43:00

### GENERAL INFORMATION:

Formation: **Chester**

Deviated: No Whipstock: ft (KB)

Time Tool Opened: 03:30:00

Time Test Ended: 11:21:30

Test Type: Conventional Bottom Hole (Reset)

Tester: Cornelio Landa III

Unit No: 60

Interval: **5805.00 ft (KB) To 5850.00 ft (KB) (TVD)**

Total Depth: 5850.00 ft (KB) (TVD)

Hole Diameter: 7.88 inches Hole Condition: Fair

Reference Elevations: 2723.00 ft (KB)

2713.00 ft (CF)

KB to GR/CF: 10.00 ft

**Serial #: 8356** Outside

Press@RunDepth: 134.93 psig @ 5807.00 ft (KB)

Start Date: 2014.02.12

End Date:

2014.02.13

Start Time: 22:43:05

End Time:

11:21:30

Capacity: 8000.00 psig

Last Calib.: 2014.02.13

Time On Btm: 2014.02.13 @ 03:27:00

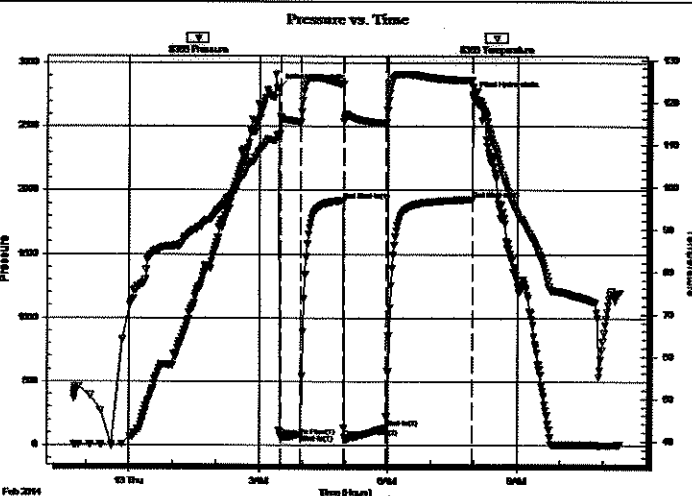
Time Off Btm: 2014.02.13 @ 07:58:30

TEST COMMENT: IF: BOB in 30 seconds

ISI: Bled off in 9 min.-Surface blow back after 22 min. shut-in- Died @ 45 into shut-in

FF: BOB in 30 seconds

FSI: Bled off in 9 min.- Surface blow back-Built to 3" Died back to 2 1/2" of blow back



### PRESSURE SUMMARY

Time (Min.)	Pressure (psig)	Temp (deg F)	Annotation
0	2801.96	111.71	Initial Hydro-static
3	69.60	116.13	Open To Flow (1)
31	85.86	115.18	Shut-In(1)
90	1921.75	124.23	End Shut-In(1)
92	58.24	116.28	Open To Flow (2)
150	134.93	114.74	Shut-In(2)
271	1927.92	125.10	End Shut-In(2)
272	2747.59	123.41	Final Hydro-static

### Recovery

Length (ft)	Description	Volume (bbl)
63.00	Mud 100m	0.31
0.00	Probable Undetectable gas	0.00

\* Recovery from multiple tests

### Gas Rates

	Choke (inches)	Pressure (psig)	Gas Rate (Mcf/d)





**TRILOBITE  
TESTING, INC.**

# DRILL STEM TEST REPORT

**TOOL DIAGRAM**

Raydon Exploration Inc.  
1601 NW Expressway Ste.#1300  
Oklahoma City, OK 73118  
  
ATTN: Ed Grieves

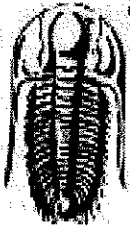
**Kansas-Smith Farms #1-28**  
**28-33s-30w Meade,KS**  
Job Ticket: 55709      **DST#: 2**  
Test Start: 2014.02.12 @ 22:43:00

**Tool Information**

Drill Pipe:	Length: 5544.00 ft	Diameter: 3.80 inches	Volume: 77.77 bbl	Tool Weight: 2500.00 lb
Heavy Wt. Pipe:	Length: 0.00 ft	Diameter: 0.00 inches	Volume: 0.00 bbl	Weight set on Packer: 24000.00 lb
Drill Collar:	Length: 242.00 ft	Diameter: 2.25 inches	Volume: 1.19 bbl	Weight to Pull Loose: 20000.00 lb
			<b>Total Volume: 78.96 bbl</b>	Tool Chased 0.00 ft
Drill Pipe Above KB:	8.00 ft			String Weight: Initial 74000.00 lb
Depth to Top Packer:	5805.00 ft			Final 78000.00 lb
Depth to Bottom Packer:	ft			
Interval between Packers:	45.00 ft			
Tool Length:	72.00 ft			
Number of Packers:	2	Diameter: 6.75 inches		

Tool Comments:

Tool Description	Length (ft)	Serial No.	Position	Depth (ft)	Accum. Lengths
Stubb	1.00			5779.00	
Shut In Tool	5.00			5784.00	
Hydraulic tool	5.00			5789.00	
Jars	5.00			5794.00	
Safety Joint	2.00			5796.00	
Packer	5.00			5801.00	27.00      Bottom Of Top Packer
Packer	4.00			5805.00	
Stubb	1.00			5806.00	
Perforations	1.00			5807.00	
Recorder	0.00	8373	Inside	5807.00	
Recorder	0.00	8356	Outside	5807.00	
Perforations	5.00			5812.00	
Change Over Sub	1.00			5813.00	
Drill Pipe	31.00			5844.00	
Change Over Sub	1.00			5845.00	
Bullnose	5.00			5850.00	45.00      Bottom Packers & Anchor
<b>Total Tool Length:</b>	<b>72.00</b>				



**TRILOBITE  
TESTING, INC.**

## DRILL STEM TEST REPORT

**FLUID SUMMARY**

Raydon Exploration Inc.

**Kansas-Smith Farms #1-28**

1601 NW Expressway Ste.#1300  
Oklahoma City, OK 73118

**28-33s-30w Meade,KS**

Job Ticket: 55709

**DST#: 2**

ATTN: Ed Grieves

Test Start: 2014.02.12 @ 22:43:00

### Mud and Cushion Information

Mud Type: Gel Chem	Cushion Type:	Oil API:	deg API
Mud Weight: 9.00 lb/gal	Cushion Length: ft	Water Salinity:	ppm
Viscosity: 58.00 sec/qt	Cushion Volume: bbl		
Water Loss: 5.19 in <sup>3</sup>	Gas Cushion Type:		
Resistivity: 0.00 ohm.m	Gas Cushion Pressure: psig		
Salinity: 2100.00 ppm			
Filter Cake: 1.00 inches			

### Recovery Information

Recovery Table

Length ft	Description	Volume bbl
63.00	Mud 100m	0.310
0.00	Probable Undetectable gas	0.000

Total Length: 63.00 ft      Total Volume: 0.310 bbl

Num Fluid Samples: 0

Num Gas Bombs: 0

Serial #:

Laboratory Name:

Laboratory Location:

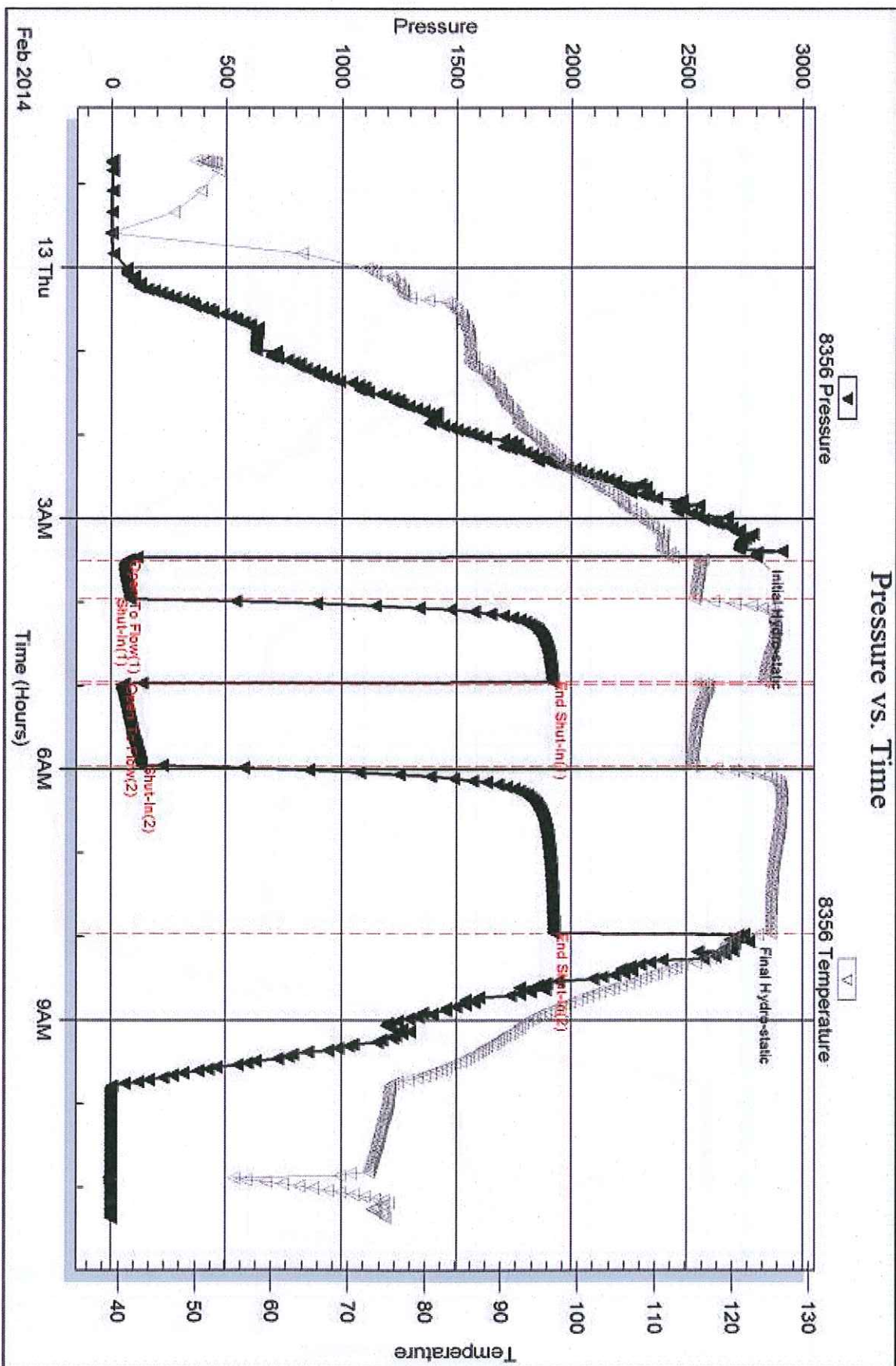
Recovery Comments:

Serial #: 8356

Outside Raydon Exploration Inc.

28-33s-30w Meade, KS

DST Test Number: 2



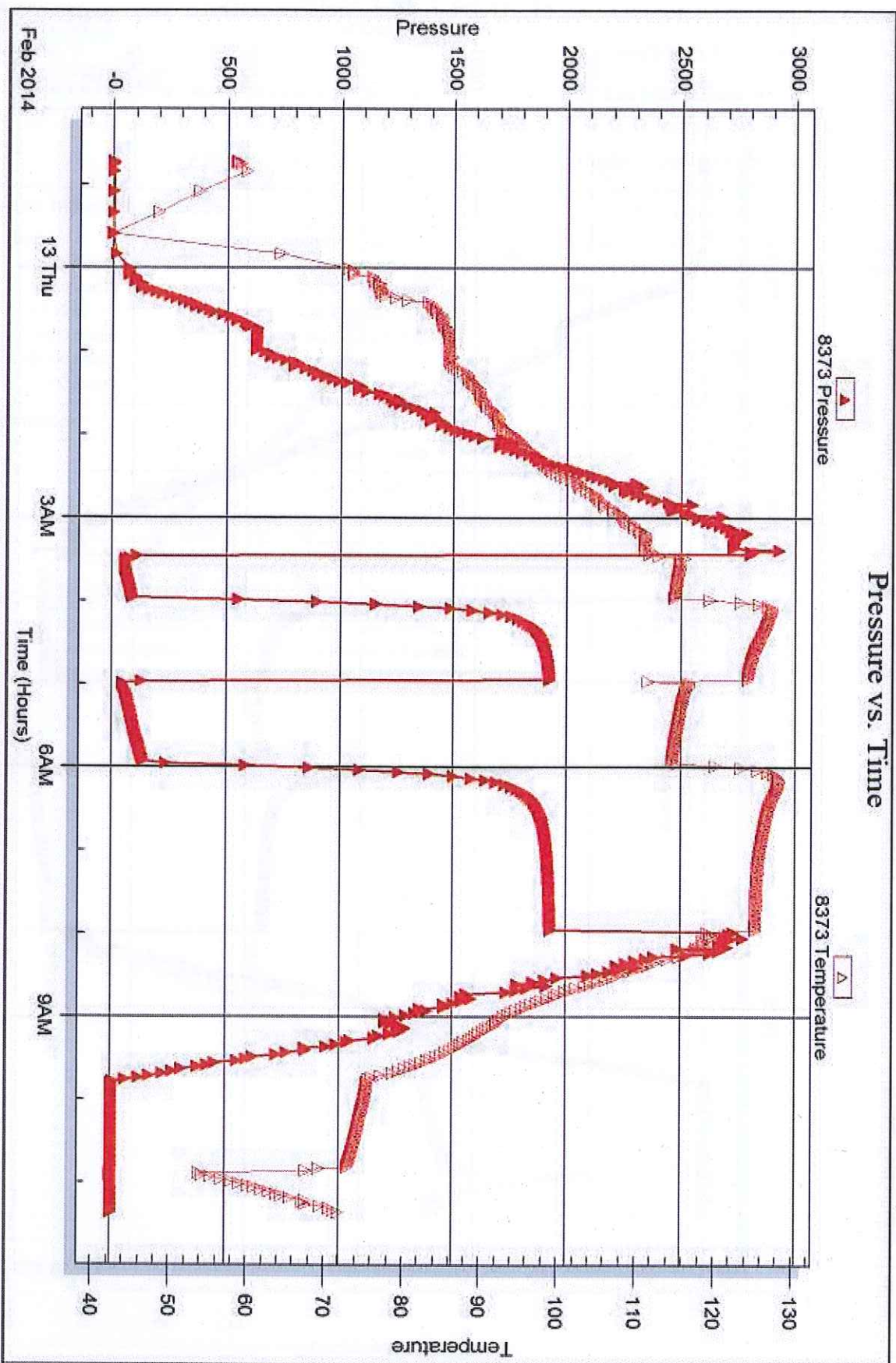
Serial #: 8373

Inside

Raydon Exploration Inc.

28-33s-30w Meade, KS

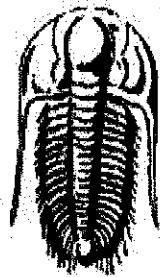
DST Test Number: 2



Tribble Testing, Inc

Ref. No: 55709

Printed: 2014.02.18 @ 11:40:19



**TRILOBITE  
TESTING, INC.**

## DRILL STEM TEST REPORT

Prepared For: **Raydon Exploration Inc.**

1601 NW Expressway Ste.#1300  
Oklahoma City, OK 73118

ATTN: Ed Grieves

**28-33s-30w Meade,KS**

**Kansas-Smith Farms #1-28**

Start Date: 2014.02.15 @ 03:32:56

End Date: 2014.02.15 @ 15:00:56

Job Ticket #: 55632                      DST #: 3

Trilobite Testing, Inc

PO Box 362 Hays, KS 67601

ph: 785-625-4778 fax: 785-625-5620

Printed: 2014.02.18 @ 11:38:18

Raydon Exploration Inc.

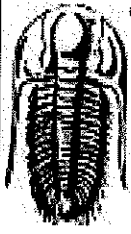
Kansas-Smith Farms #1-28

28-33s-30w Meade,KS

DST # 3

Lower Chester

2014.02.15



**TRILOBITE TESTING, INC**

# DRILL STEM TEST REPORT

Raydon Exploration Inc.  
 1601 NW Expressway Ste.#1300  
 Oklahoma City, OK 73118  
 ATTN: Ed Grieves

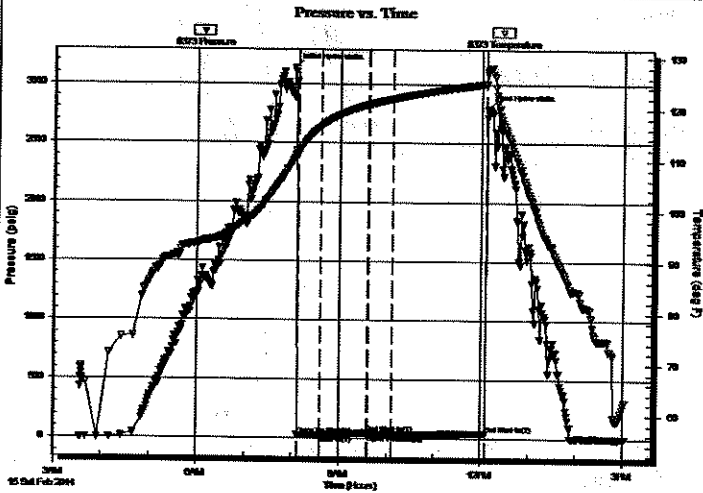
**Kansas-Smith Farms #1-28**  
**28-33s-30w Meade,KS**  
 Job Ticket: 55632 **DST#: 3**  
 Test Start: 2014.02.15 @ 03:32:56

**GENERAL INFORMATION:**

Formation: **Lower Chester**  
 Deviated: No Whipstock: ft (KB)  
 Time Tool Opened: 08:06:56  
 Time Test Ended: 15:00:56  
 Test Type: Conventional Bottom Hole (Reset)  
 Tester: Brandon Turley  
 Unit No: 60  
 Interval: **6046.00 ft (KB) To 6090.00 ft (KB) (TVD)**  
 Total Depth: 6090.00 ft (KB) (TVD)  
 Hole Diameter: 7.88 inches Hole Condition: Fair  
 Reference Elevations: 2723.00 ft (KB)  
 2713.00 ft (CF)  
 KB to GR/CF: 10.00 ft

**Serial #: 8373** Inside  
 Press@RunDepth: 31.96 psig @ 6051.00 ft (KB)  
 Start Date: 2014.02.15 End Date: 2014.02.15 Capacity: 8000.00 psig  
 Start Time: 03:33:01 End Time: 15:00:56 Last Calib.: 2014.02.15  
 Time On Btm: 2014.02.15 @ 08:02:56  
 Time Off Btm: 2014.02.15 @ 12:07:26

**TEST COMMENT:** IF: Surface blow died in 9 min.  
 IS: No return.  
 FF: No blow.  
 FS: No return.



**PRESSURE SUMMARY**

Time (Min.)	Pressure (psig)	Temp (deg F)	Annotation
0	3138.63	110.47	Initial Hydro-static
4	27.13	111.48	Open To Flow (1)
33	29.01	116.61	Shut-In(1)
92	46.82	120.77	End Shut-In(1)
94	30.88	120.81	Open To Flow (2)
123	31.96	121.91	Shut-In(2)
243	43.91	124.91	End Shut-In(2)
245	2796.36	127.49	Final Hydro-static

**Recovery**

Length (ft)	Description	Volume (bbl)
15.00	mud 100%m	0.07

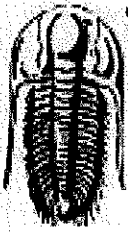
\* Recovery from multiple tests

**Gas Rates**

Choke (inches)	Pressure (psig)	Gas Rate (Mcf/d)







**TRILOBITE  
TESTING, INC.**

# DRILL STEM TEST REPORT

**TOOL DIAGRAM**

Raydon Exploration Inc.

**Kansas-Smith Farms #1-28**

1601 NW Expressway Ste.#1300  
Oklahoma City, OK 73118

**28-33s-30w Meade,KS**

Job Ticket: 55632

**DST#: 3**

ATTN: Ed Grieves

Test Start: 2014.02.15 @ 03:32:56

## Tool Information

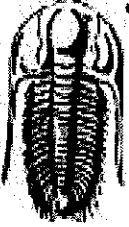
Drill Pipe:	Length: 5797.00 ft	Diameter: 3.80 inches	Volume: 81.32 bbl	Tool Weight: 2500.00 lb
Heavy Wt. Pipe:	Length: 0.00 ft	Diameter: 0.00 inches	Volume: 0.00 bbl	Weight set on Packer: 30000.00 lb
Drill Collar:	Length: 242.00 ft	Diameter: 2.25 inches	Volume: 1.19 bbl	Weight to Pull Loose: 98000.00 lb
		<b>Total Volume:</b>	<b>82.51 bbl</b>	Tool Chased 0.00 ft
Drill Pipe Above KB:	17.00 ft			String Weight: Initial 82000.00 lb
Depth to Top Packer:	6046.00 ft			Final 82000.00 lb
Depth to Bottom Packer:	ft			
Interval between Packers:	48.00 ft			
Tool Length:	72.00 ft			
Number of Packers:	2	Diameter: 6.75 inches		

Tool Comments:

## Tool Description

Tool Description	Length (ft)	Serial No.	Position	Depth (ft)	Accum. Lengths
Stubb	1.00			6023.00	
Shut In Tool	5.00			6028.00	
Hydraulic tool	5.00			6033.00	
Jars	5.00			6038.00	
Safety Joint	3.00			6041.00	
Packer	5.00			6046.00	24.00 Bottom Of Top Packer
Packer - Shale	4.00			6050.00	
Stubb	1.00			6051.00	
Recorder	0.00	8373	Inside	6051.00	
Recorder	0.00	8356	Outside	6051.00	
Perforations	5.00			6056.00	
Change Over Sub	1.00			6057.00	
Drill Pipe	31.00			6088.00	
Change Over Sub	1.00			6089.00	
Bullnose	5.00			6094.00	48.00 Anchor Tool

**Total Tool Length: 72.00**



**TRILOBITE  
TESTING, INC.**

# DRILL STEM TEST REPORT

**FLUID SUMMARY**

Raydon Exploration Inc.

**Kansas-Smith Farms #1-28**

1601 NW Expressway Ste.#1300  
Oklahoma City, OK 73118

**28-33s-30w Meade,KS**

Job Ticket: 55632

**DST#: 3**

ATTN: Ed Grieves

Test Start: 2014.02.15 @ 03:32:56

## Mud and Cushion Information

Mud Type: Gel Chem

Mud Weight: 9.00 lb/gal

Viscosity: 62.00 sec/qt

Water Loss: 5.99 in<sup>3</sup>

Resistivity: 0.00 ohm.m

Salinity: 3100.00 ppm

Filter Cake: 1.00 inches

Cushion Type:

Cushion Length:

Cushion Volume:

Gas Cushion Type:

Gas Cushion Pressure:

Oil API:

Water Salinity:

ft

bbbl

psig

0 deg API

0 ppm

## Recovery Information

Recovery Table

Length ft	Description	Volume bbbl
15.00	mud 100%m	0.074

Total Length: 15.00 ft

Total Volume: 0.074 bbl

Num Fluid Samples: 0

Num Gas Bombs: 0

Serial #:

Laboratory Name:

Laboratory Location:

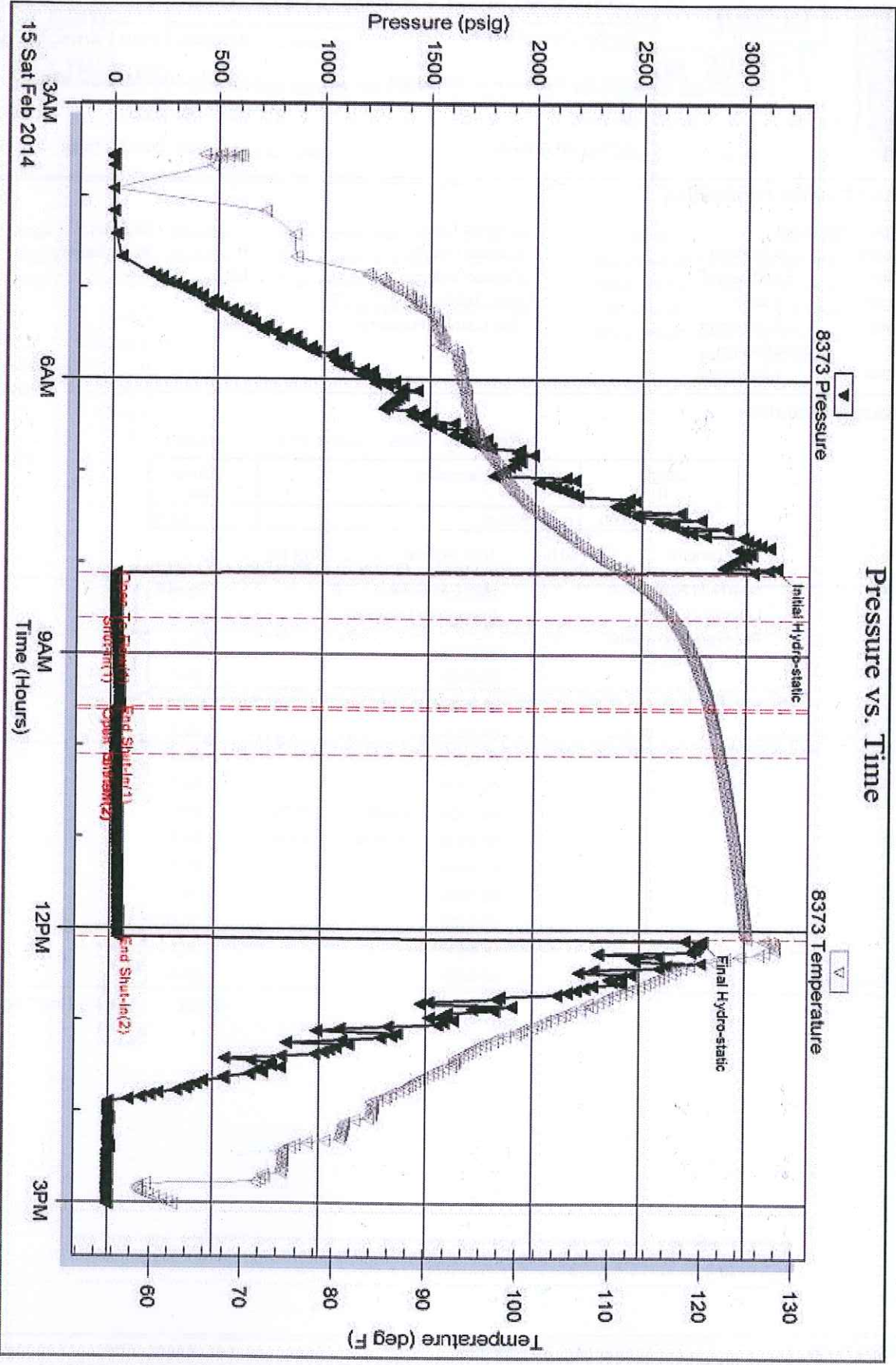
Recovery Comments:

Serial #: 8373

Inside Raydon Exploration Inc.

28-33s-30w Meade, KS

DST Test Number: 3

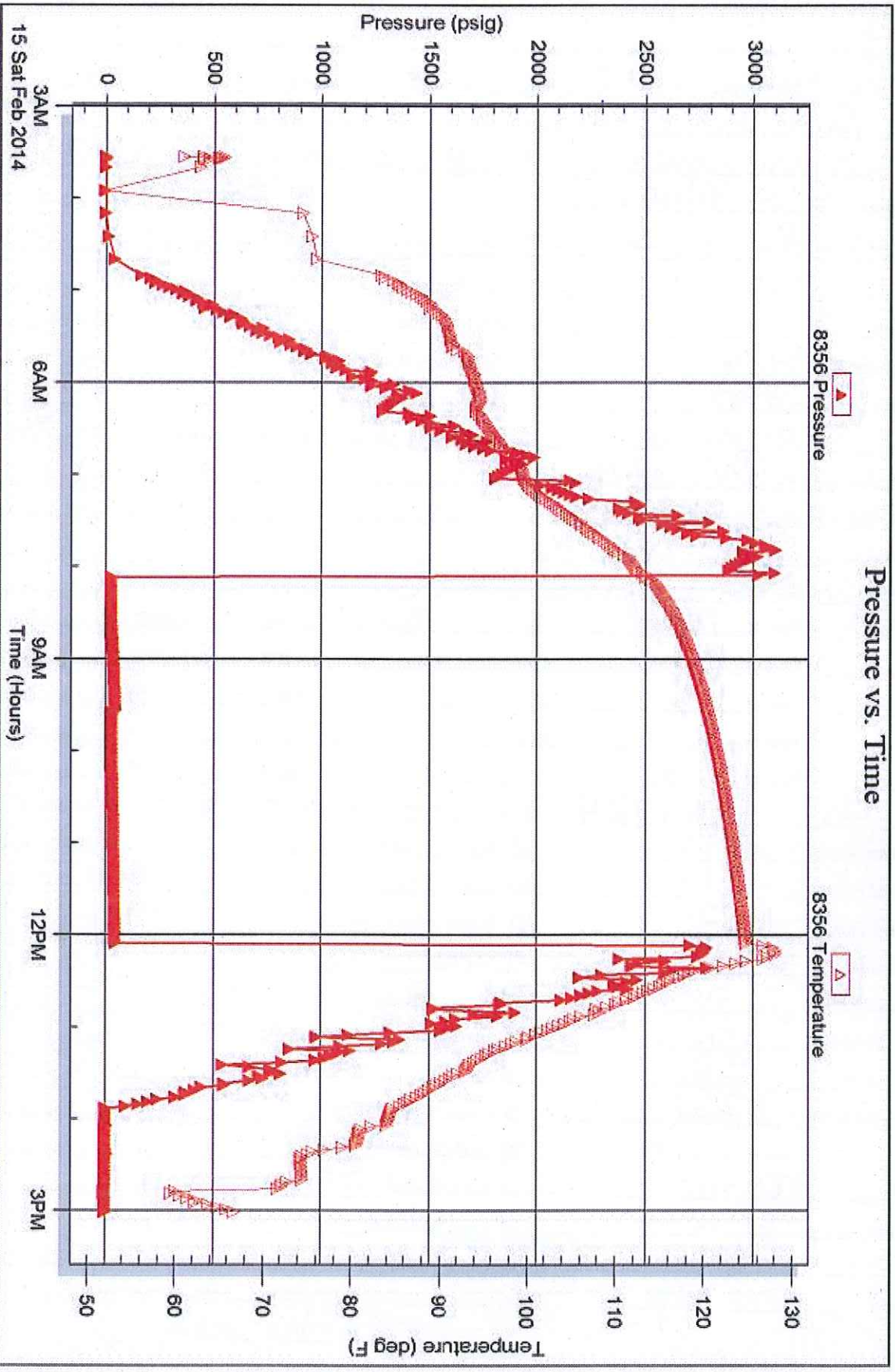


Serial #: 8356

Outside Raydon Exploration Inc.

28-33s-30w Meade KS

DST Test Number: 3



Triobite Testing, Inc

Ref. No: 55632

Printed: 2014.02.18 @ 11:36:20



# TRILOBITE TESTING INC.

1515 Commerce Parkway • Hays, Kansas 67601

## Test Ticket

NO. 55708

Well Name & No. Kansas Smith Farms #1-28 Test No. 1 Date 2-10-14  
 Company Raydon Exploration Inc. Elevation 2723 KB 2713 GL  
 Address 1601 NW Expressway Ste. 1300 - Oklahoma City, OK - 73118  
 Co. Rep / Geo. Edwin H. Grieves Rig Tomcat #4  
 Location: Sec. 28 Twp. 33-S Rge. 30-W Co. Meade State Ks

Interval Tested 5730-5790 Zone Tested MOMOW  
 Anchor Length 60 Drill Pipe Run 5479 Mud Wt. 9.0  
 Top Packer Depth 5726 Drill Collars Run 242 Vis 58  
 Bottom Packer Depth 5730 Wt. Pipe Run 18 WL 44  
 Total Depth 5790 Chlorides 2800 ppm System LCM #6

Blow Description FF 4'14" in of Blow  
ISF Bled off in 2 min. NO Return  
FF. Weak surface Blow - Died in 25 min.  
FSTF No Return

Rec	Feet of	%gas	%oil	%water	%mud
<u>70</u>	<u>mud</u>			<u>100</u>	
Rec	Feet of	%gas	%oil	%water	%mud
Rec	Feet of	%gas	%oil	%water	%mud
Rec	Feet of	%gas	%oil	%water	%mud

Rec Total 70 BHT 124 Gravity — API RW — @ — °F Chlorides — ppm

(A) Initial Hydrostatic <u>2793</u>	<input checked="" type="checkbox"/> Test 1350	T-On Location <u>22.45</u>
(B) First Initial Flow <u>51</u>	<input checked="" type="checkbox"/> Jars 250	T-Started <u>23.55</u>
(C) First Final Flow <u>52</u>	<input checked="" type="checkbox"/> Safety Joint 75	T-Open <u>11.01</u>
(D) Initial Shut-In <u>74</u>	<input checked="" type="checkbox"/> Circ Sub <u>w/c</u>	T-Pulled <u>15.01</u>
(E) Second Initial Flow <u>54</u>	<input checked="" type="checkbox"/> Hourly Standby <u>8hrs steady</u> 875	T-Out <u>18.45</u>
(F) Second Final Flow <u>56</u>	<input checked="" type="checkbox"/> Mileage <u>264 RT</u>	Comments <u>8hrs steady</u>
(G) Final Shut-In <u>75</u>	<input type="checkbox"/> Sampler 224rt 347.20	<u>Stayed in motel</u>
(H) Final Hydrostatic <u>2761</u>	<input type="checkbox"/> Straddle	<u>10, 11, 12, &amp; 13</u>

Initial Open 30  
 Initial Shut-In 60  
 Final Flow 30  
 Final Shut-In 120

Shale Packer 250  
 Extra Packer  
 Extra Recorder  
 Day Standby

Sub Total 3297.20

Approved By [Signature] Our Representative [Signature]

TriLOBITE TESTING INC. shall not be liable for damaged or any kind of the property or personnel of the one for whom a test is made, or for any loss suffered or sustained, directly or indirectly, through the use of equipment, or its statements or opinion concerning the results of any test, tools lost or damaged in the hole shall be paid for at cost by the party for whom the test is made.



# TRILOBITE TESTING INC.

1515 Commerce Parkway • Hays, Kansas 67601

## Test Ticket

NO. 55709

Well Name & No. Kansas Smith Farms #1-28 Test No. 2 Date 2-12-14  
 Company Raydon Exploration Inc. Elevation 2723 KB 2713 GL  
 Address 1601 W Expressway Ste 1300 - Oklahoma City, OK 73118  
 Co. Rep / Geo. Ed Orieves Rig Tomcat #4  
 Location: Sec. 28 Twp. 33-S Rge. 30-W Co. Meade State KS

Interval Tested 5805-5850 Zone Tested Chester  
 Anchor Length 45' Drill Pipe Run 5544 Mud Wt. 9.0  
 Top Packer Depth 5801 Drill Collars Run 242 Vis 58  
 Bottom Packer Depth 5805 Wt. Pipe Run 8 WL 5.2  
 Total Depth 5850 Chlorides 2100 ppm System LCM #5

Blow Description IF: Bob. in 30 seconds Died @ 45 min  
ISI: Bled off in 9 min. - surface blowback after 22 min shut-in - Died in 23 min. after  
FF: Bob. in 30 seconds

FSI: Bled off in 9 min. - surface blowback - Built to 3 in. - Died back to 2 1/2 in of blowback

Rec	Feet of	%gas	%oil	%water	%mud
<u>63</u>	<u>mud</u>				<u>100</u>
	<u>probable undetectable gas</u>				

Rec Total 63 BHT 123 Gravity — API RW — @ — F Chlorides — ppm

(A) Initial Hydrostatic <u>2802</u>	<input checked="" type="checkbox"/> Test 1350	T-On Location <u>22:25</u>
(B) First Initial Flow <u>70</u>	<input checked="" type="checkbox"/> Jars 250	T-Started <u>22:43</u>
(C) First Final Flow <u>86</u>	<input checked="" type="checkbox"/> Safety Joint 75	T-Open <u>03:30</u>
(D) Initial Shut-In <u>1922</u>	<input checked="" type="checkbox"/> Circ Sub <u>W/C</u>	T-Pulled <u>08:00</u>
(E) Second Initial Flow <u>58</u>	<input checked="" type="checkbox"/> Hourly Standby <u>2 hrs over 1.5h 150 allotted time</u>	T-Out <u>11:21</u>
(F) Second Final Flow <u>135</u>	<input checked="" type="checkbox"/> Mileage 347.20	Comments <u>last test ran on 2-11-14 @ 18:44 = 4hrs</u>
(G) Final Shut-In <u>1928</u>	<input type="checkbox"/> Sampler	<u>stlby</u>
(H) Final Hydrostatic <u>2748</u>	<input type="checkbox"/> Straddle	<input type="checkbox"/> Ruined Shale Packer
	<input checked="" type="checkbox"/> Shale Packer 250	<input type="checkbox"/> Ruined Packer
	<input type="checkbox"/> Extra Packer	<input type="checkbox"/> Extra Copies

Initial Open 30  
 Initial Shut-In 60  
 Final Flow 60  
 Final Shut-In 120

Sub Total no steps 2572.20  
 Total 2697.20  
 MP/DST Disc't

Approved By [Signature] to Raydon Our Representative [Signature]

Trilobite Testing Inc. shall not be liable for damages of any kind of the property or personnel of the one for whom a test is made, or for any loss suffered or sustained, directly or indirectly, through the use of its equipment, or its statements or opinion concerning the results of any test, tools lost or damaged in the hole shall be paid for at cost by the party for whom the test is made.



# TRILOBITE TESTING INC.

1515 Commerce Parkway • Hays, Kansas 67601

## Test Ticket

NO. 55632

Well Name & No. KS-Smith Farms 128 Test No. 3 Date 2-15-14  
 Company Raydon Exploration Elevation 2723 KB 2713 GL  
 Address \_\_\_\_\_  
 Co. Rep / Geo. Ed Grieves Rig Tom cat #4  
 Location: Sec. 28 Twp. 33 Rge. 30 Co. Merde State KS

Interval Tested 6046 6090 Zone Tested Lower Chester  
 Anchor Length 44 Drill Pipe Run 5797 Mud Wt. 9.1  
 Top Packer Depth 6041 Drill Collars Run 242 Vis 62  
 Bottom Packer Depth 6046 Wt. Pipe Run \_\_\_\_\_ WL 6.0  
 Total Depth 6090 Chlorides 3100 ppm System LCM 80

Blow Description IF: Surface blow died in 9 min.  
IS: No return.  
FF: No blow.  
FS: No return.

Rec	Feet of	%gas	%oil	%water	%mud
<u>15</u>	<u>Mud</u>			<u>100</u>	
Rec	Feet of	%gas	%oil	%water	%mud
Rec	Feet of	%gas	%oil	%water	%mud
Rec	Feet of	%gas	%oil	%water	%mud
Rec	Feet of	%gas	%oil	%water	%mud

Rec Total 15 BHT 124 Gravity \_\_\_\_\_ API RW \_\_\_\_\_ @ \_\_\_\_\_ °F Chlorides \_\_\_\_\_ ppm

(A) Initial Hydrostatic <u>3138</u>	<input type="checkbox"/> Test 1350	T-On Location <u>3:10</u>
(B) First Initial Flow <u>27</u>	<input checked="" type="checkbox"/> Jars 250	T-Started <u>3:32</u>
(C) First Final Flow <u>29</u>	<input checked="" type="checkbox"/> Safety Joint 75	T-Open <u>8:05</u>
(D) Initial Shut-In <u>46</u>	<input checked="" type="checkbox"/> Circ Sub <u>NIL</u>	T-Pulled <u>12:05</u>
(E) Second Initial Flow <u>30</u>	<input type="checkbox"/> Hourly Standby	T-Out <u>15:00</u>
(F) Second Final Flow <u>31</u>	<input checked="" type="checkbox"/> Mileage <u>228-x2</u> 694.40	Comments <u>logged 2-16</u>
(G) Final Shut-In <u>43</u>	<input type="checkbox"/> Sampler	<u>at 6:30 pm. standby</u>
(H) Final Hydrostatic <u>2796</u>	<input checked="" type="checkbox"/> Straddle	<u>for 2+3 9/150.</u>
Initial Open <u>30</u>	<input checked="" type="checkbox"/> Shale Packer 250	<input checked="" type="checkbox"/> Ruined Shale Packer 350
Initial Shut-In <u>60</u>	<input type="checkbox"/> Extra Packer	<input type="checkbox"/> Ruined Packer
Final Flow <u>30</u>	<input type="checkbox"/> Extra Recorder	Sub Total 1341.67
Final Shut-In <u>120</u>	<input checked="" type="checkbox"/> Day Standby 1d 16.25h & 1d 3.5h	Total 4461.07
	<input checked="" type="checkbox"/> Accessibility 150	MP/DST Disc't
	Sub Total 2769.40	

Approved By [Signature] Our Representative [Signature]

Trilobite Testing Inc. shall not be liable for damaged of any kind of the property or personnel of the one for whom a test is made, or for any loss suffered or sustained, directly or indirectly, through the use of its equipment, or its statements or opinion concerning the results of any test, tools lost or damaged in the hole shall be paid for at cost by the party for whom the test is made.