



**TRILOBITE
TESTING, INC.**

DRILL STEM TEST REPORT

Val Energy Inc.
200 W. Douglas Ave
STE 520
Wichita KS 67202
ATTN: Harley Sayles

20 - 8S - 35W Thomas KS

John #1-20

Job Ticket: 56885

DST#: 1

Test Start: 2014.05.01 @ 08:26:00

GENERAL INFORMATION:

Formation: **LKC " I "**
 Deviated: No Whipstock: ft (KB)
 Time Tool Opened: 12:05:00
 Time Test Ended: 17:17:00
 Interval: **4344.00 ft (KB) To 4398.00 ft (KB) (TVD)**
 Total Depth: 4398.00 ft (KB) (TVD)
 Hole Diameter: 7.88 inches Hole Condition: Good
 Test Type: Conventional Bottom Hole (Initial)
 Tester: Ryan Nichols
 Unit No: 58
 Reference Elevations: 3325.00 ft (KB)
 3317.00 ft (CF)
 KB to GR/CF: 8.00 ft

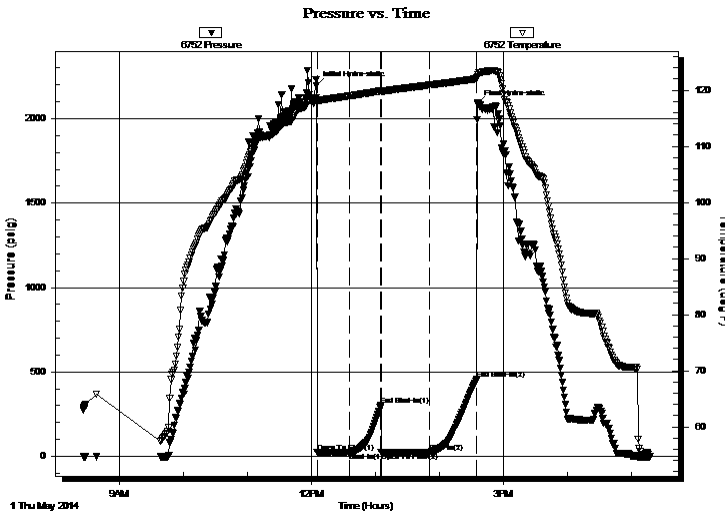
Serial #: 6752

Inside

Press @ RunDepth: 25.54 psig @ 4345.00 ft (KB) Capacity: 8000.00 psig
 Start Date: 2014.05.01 End Date: 2014.05.01 Last Calib.: 2014.05.01
 Start Time: 08:26:01 End Time: 17:17:00 Time On Btm: 2014.05.01 @ 12:04:40
 Time Off Btm: 2014.05.01 @ 14:35:20

TEST COMMENT: 30 IF - Surface blow built to 1"
 30 IS - No return
 45 FF - Surface died @ 22 mins
 45 FSI - No return

PRESSURE SUMMARY



Time (Min.)	Pressure (psig)	Temp (deg F)	Annotation
0	2193.97	118.68	Initial Hydro-static
1	22.31	118.33	Open To Flow (1)
31	24.44	118.96	Shut-In(1)
60	300.45	119.88	End Shut-In(1)
61	22.94	119.74	Open To Flow (2)
106	25.54	120.90	Shut-In(2)
150	455.00	122.03	End Shut-In(2)
151	2085.64	122.44	Final Hydro-static

Recovery

Length (ft)	Description	Volume (bbl)
5.00	Mud w / oil spots 100%M	0.07

Gas Rates

Choke (inches)	Pressure (psig)	Gas Rate (Mcf/d)



TRILOBITE TESTING, INC.

DRILL STEM TEST REPORT

Val Energy Inc.
 200 W. Douglas Ave
 STE 520
 Wichita KS 67202
 ATTN: Harley Sayles

20 - 8S - 35W Thomas KS

John #1-20

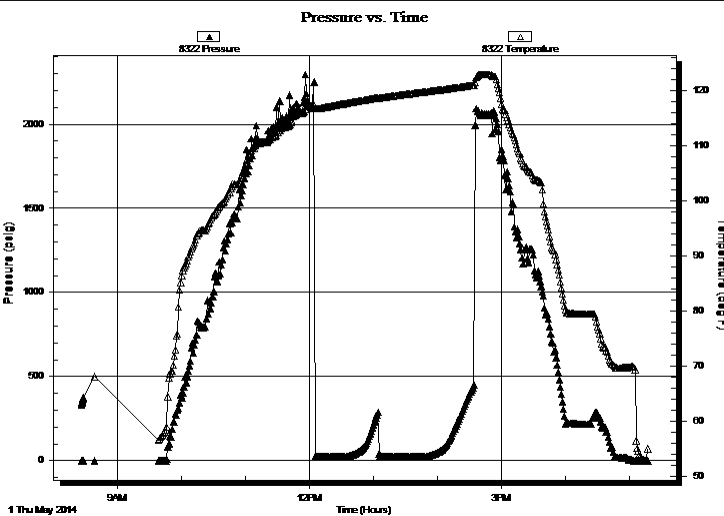
Job Ticket: 56885 **DST#: 1**
 Test Start: 2014.05.01 @ 08:26:00

GENERAL INFORMATION:

Formation: **LKC " I "**
 Deviated: No Whipstock: ft (KB)
 Time Tool Opened: 12:05:00
 Time Test Ended: 17:17:00
 Test Type: Conventional Bottom Hole (Initial)
 Tester: Ryan Nichols
 Unit No: 58
 Interval: **4344.00 ft (KB) To 4398.00 ft (KB) (TVD)**
 Total Depth: 4398.00 ft (KB) (TVD)
 Reference Elevations: 3325.00 ft (KB)
 3317.00 ft (CF)
 Hole Diameter: 7.88 inches Hole Condition: Good
 KB to GR/CF: 8.00 ft

Serial #: 8322 Outside
 Press @ Run Depth: psig @ 4345.00 ft (KB)
 Capacity: 8000.00 psig
 Start Date: 2014.05.01 End Date: 2014.05.01 Last Calib.: 2014.05.01
 Start Time: 08:26:01 End Time: 17:17:00 Time On Btm:
 Time Off Btm:

TEST COMMENT: 30 IF - Surface blow built to 1"
 30 IS - No return
 45 FF - Surface died @ 22 mins
 45 FSI - No return



PRESSURE SUMMARY

Time (Min.)	Pressure (psig)	Temp (deg F)	Annotation

Recovery

Length (ft)	Description	Volume (bbl)
5.00	Mud w / oil spots 100%M	0.07

Gas Rates

Choke (inches)	Pressure (psig)	Gas Rate (Mcf/d)



**TRILOBITE
TESTING, INC.**

DRILL STEM TEST REPORT

FLUID SUMMARY

Val Energy Inc.

20 - 8S - 35W Thomas KS

200 W. Douglas Ave
STE 520
Wichita KS 67202
ATTN: Harley Sayles

John #1-20

Job Ticket: 56885

DST#: 1

Test Start: 2014.05.01 @ 08:26:00

Mud and Cushion Information

Mud Type: Gel Chem

Mud Weight: 9.00 lb/gal

Viscosity: 51.00 sec/qt

Water Loss: 8.79 in³

Resistivity: ohm.m

Salinity: 4400.00 ppm

Filter Cake: 1.00 inches

Cushion Type:

Cushion Length: ft

Cushion Volume: bbl

Gas Cushion Type:

Gas Cushion Pressure: psig

Oil API:

Water Salinity: deg API

ppm

Recovery Information

Recovery Table

Length ft	Description	Volume bbl
5.00	Mud w / oil spots 100%M	0.070

Total Length: 5.00 ft Total Volume: 0.070 bbl

Num Fluid Samples: 0

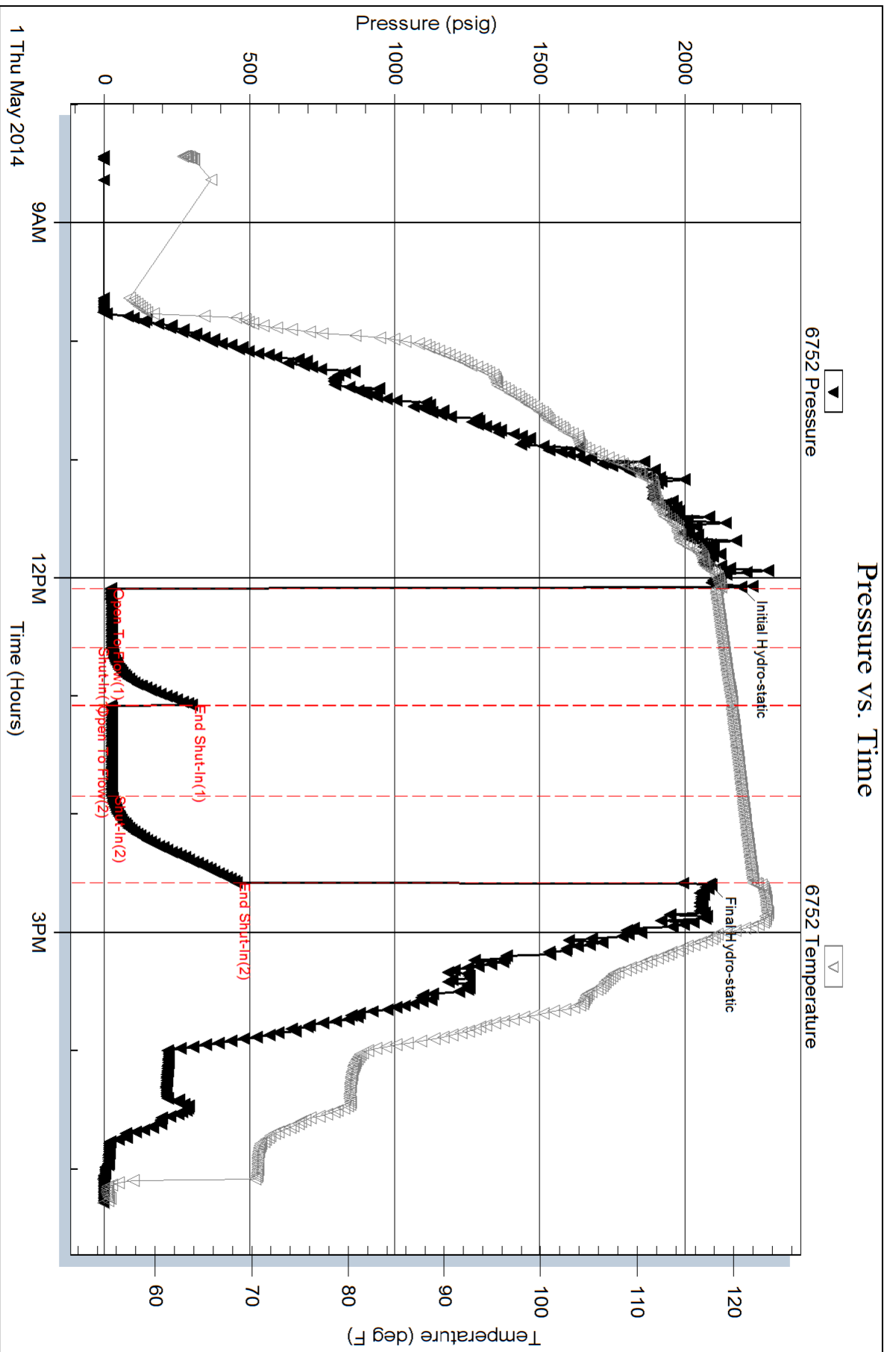
Num Gas Bombs: 0

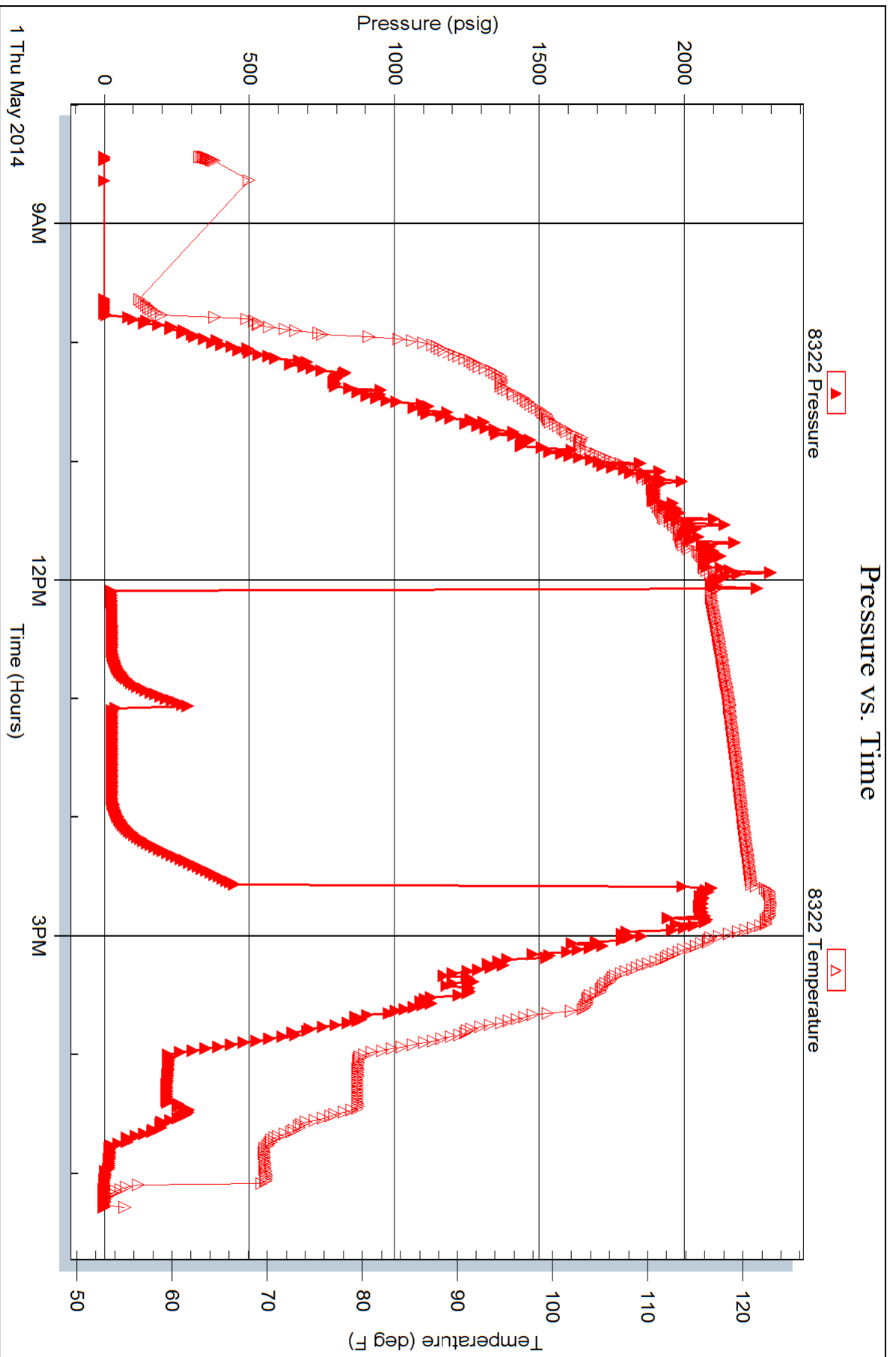
Serial #:

Laboratory Name:

Laboratory Location:

Recovery Comments:







TRILOBITE TESTING, INC.

DRILL STEM TEST REPORT

Val Energy Inc.
 200 W. Douglas Ave
 STE 520
 Wichita KS 67202
 ATTN: Harley Sayles

20 - 8S - 35W Thomas KS

John #1-20

Job Ticket: 56886

DST#: 2

Test Start: 2014.05.02 @ 19:14:00

GENERAL INFORMATION:

Formation: **Marmaton & Pawnee**

Deviated: No Whipstock: ft (KB)

Time Tool Opened: 21:57:50

Time Test Ended: 02:43:50

Test Type: Conventional Bottom Hole (Reset)

Tester: Ryan Nichols

Unit No: 58

Interval: **4492.00 ft (KB) To 4598.00 ft (KB) (TVD)**

Reference Elevations: 3325.00 ft (KB)

Total Depth: 4598.00 ft (KB) (TVD)

3317.00 ft (CF)

Hole Diameter: 7.88 inches Hole Condition: Good

KB to GR/CF: 8.00 ft

Serial #: 6752 Inside

Press @ Run Depth: 27.38 psig @ 4493.00 ft (KB)

Capacity: 8000.00 psig

Start Date: 2014.05.02

End Date:

2014.05.03

Last Calib.:

2014.05.03

Start Time: 19:14:01

End Time:

02:43:50

Time On Btm:

2014.05.02 @ 21:57:40

Time Off Btm:

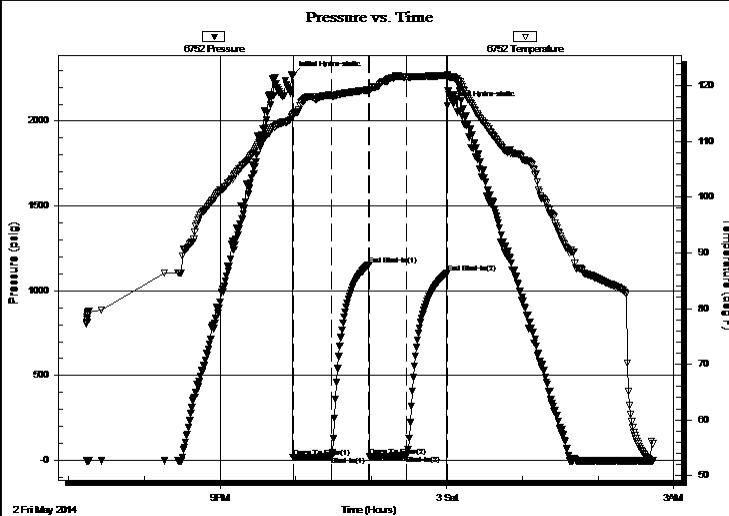
2014.05.03 @ 00:00:20

TEST COMMENT: 30 IF - Surface blow built to 1 1/4"

30 ISI - No return

30 FF - No blow

30 FSI - No return



PRESSURE SUMMARY

Time (Min.)	Pressure (psig)	Temp (deg F)	Annotation
0	2271.19	114.77	Initial Hydro-static
1	15.73	114.49	Open To Flow (1)
31	23.44	118.14	Shut-In(1)
61	1154.00	119.23	End Shut-In(1)
61	22.01	119.08	Open To Flow (2)
91	27.38	121.50	Shut-In(2)
123	1103.29	121.83	End Shut-In(2)
123	2090.13	122.02	Final Hydro-static

Recovery

Length (ft)	Description	Volume (bbl)
20.00	Mud 100%	0.28

Gas Rates

Choke (inches)	Pressure (psig)	Gas Rate (Mcf/d)

* Recovery from multiple tests



**TRILOBITE
TESTING, INC.**

DRILL STEM TEST REPORT

FLUID SUMMARY

Val Energy Inc.

20 - 8S - 35W Thomas KS

200 W. Douglas Ave
STE 520
Wichita KS 67202
ATTN: Harley Sayles

John #1-20

Job Ticket: 56886

DST#: 2

Test Start: 2014.05.02 @ 19:14:00

Mud and Cushion Information

Mud Type: Gel Chem

Cushion Type:

Oil API:

deg API

Mud Weight: 9.00 lb/gal

Cushion Length:

ft

Water Salinity:

ppm

Viscosity: 57.00 sec/qt

Cushion Volume:

bbbl

Water Loss: 8.79 in³

Gas Cushion Type:

Resistivity: ohm.m

Gas Cushion Pressure:

psig

Salinity: 6000.00 ppm

Filter Cake: 1.00 inches

Recovery Information

Recovery Table

Length ft	Description	Volume bbl
20.00	Mud 100%	0.281

Total Length: 20.00 ft Total Volume: 0.281 bbl

Num Fluid Samples: 0

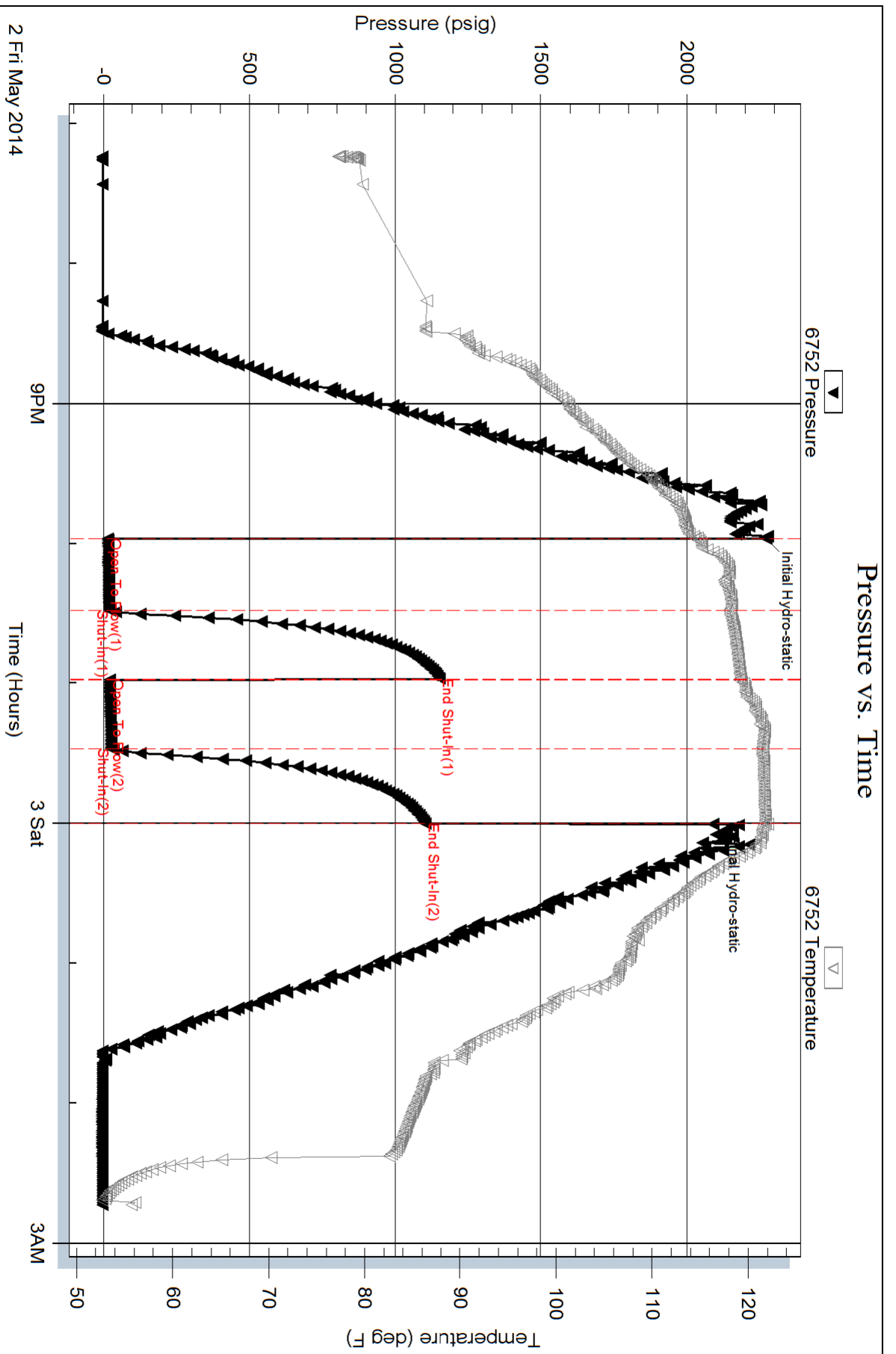
Num Gas Bombs: 0

Serial #:

Laboratory Name:

Laboratory Location:

Recovery Comments:





TRILOBITE TESTING, INC.

DRILL STEM TEST REPORT

Val Energy Inc.
 200 W. Douglas Ave
 STE 520
 Wichita KS 67202
 ATTN: Harley Sayles

20 - 8S - 35W Thomas KS

John #1-20

Job Ticket: 56887

DST#: 3

Test Start: 2014.05.03 @ 20:40:00

GENERAL INFORMATION:

Formation: **Johnson**
 Deviated: No Whipstock: ft (KB)
 Time Tool Opened: 23:45:30
 Time Test Ended: 06:54:19
 Interval: **4715.00 ft (KB) To 4739.00 ft (KB) (TVD)**
 Total Depth: 4739.00 ft (KB) (TVD)
 Hole Diameter: 7.88 inches Hole Condition: Good
 Test Type: Conventional Bottom Hole (Reset)
 Tester: Ryan Nichols
 Unit No: 58
 Reference Elevations: 3325.00 ft (KB)
 3317.00 ft (CF)
 KB to GR/CF: 8.00 ft

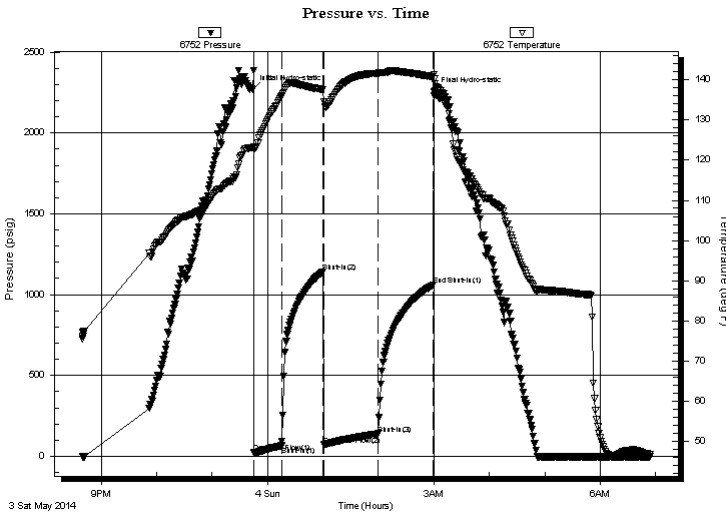
Serial #: 6752

Inside

Press @ Run Depth: 65.06 psig @ 4716.00 ft (KB) Capacity: 8000.00 psig
 Start Date: 2014.05.03 End Date: 2014.05.04 Last Calib.: 2014.05.04
 Start Time: 20:40:01 End Time: 06:54:19 Time On Btm: 2014.05.03 @ 23:44:00
 Time Off Btm: 2014.05.04 @ 03:00:30

TEST COMMENT: 30 IF - 1/2" built to BoB @ 9 mins
 45 ISI - Surface blow started @ 6 mins built to 1"
 60 FF - Surface blow built to BoB @ 22 mins
 60 FSI - Surface blow built to 2 1/4"

PRESSURE SUMMARY



Time (Min.)	Pressure (psig)	Temp (deg F)	Annotation
0	2268.94	123.15	Initial Hydro-static
2	23.40	122.99	Open To Flow (1)
31	65.06	135.74	Shut-In(1)
76	1142.18	137.53	Shut-In(2)
77	70.70	134.57	Open To Flow (2)
136	138.96	141.59	Shut-In(3)
195	1060.02	140.71	End Shut-In(1)
197	2254.14	140.11	Final Hydro-static

Recovery

Length (ft)	Description	Volume (bbl)
567.00	GO - 35%G - 65%o	7.95
0.00	378' GIP	0.00

* Recovery from multiple tests

Gas Rates

Choke (inches)	Pressure (psig)	Gas Rate (Mcf/d)

Pressure vs. Time

