



**TRILOBITE  
TESTING, INC.**

# DRILL STEM TEST REPORT

Samuel Gary Jr. & Associates

**12-11s-22w Trego KS**

1515 Wynkoop Dr. STE 700  
Denver CO, 80202

**Walz Family 1-12**

ATTN: Dan Pritchard

Job Ticket: 56075

**DST#: 3**

Test Start: 2014.02.18 @ 00:49:00

## GENERAL INFORMATION:

Formation: **LKC "H,I,J"**

Deviated: No Whipstock: ft (KB)

Time Tool Opened: 06:32:15

Time Test Ended: 12:14:30

Test Type: Conventional Bottom Hole (Reset)

Tester: Cody Bloedorn

Unit No: 73

**Interval: 3602.00 ft (KB) To 3652.00 ft (KB) (TVD)**

Reference Elevations: 2184.00 ft (KB)

Total Depth: 3652.00 ft (KB) (TVD)

2176.00 ft (CF)

Hole Diameter: 7.88 inches Hole Condition: Fair

KB to GR/CF: 8.00 ft

**Serial #: 8655 Outside**

Press @ RunDepth: 35.31 psig @ 3637.00 ft (KB)

Capacity: 8000.00 psig

Start Date: 2014.02.18

End Date:

2014.02.18

Last Calib.:

2014.02.18

Start Time: 00:49:05

End Time:

12:14:30

Time On Btm:

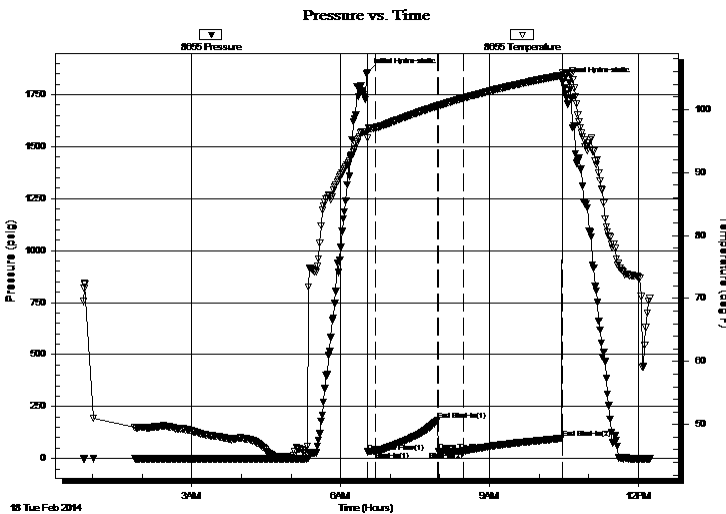
2014.02.18 @ 06:32:00

Time Off Btm:

2014.02.18 @ 10:28:45

**TEST COMMENT:** 10 - IF- 1 1/2" blow  
75 - IS- No return  
30 - FF- Surged and Died  
120 - FS- No return

## PRESSURE SUMMARY



Time (Min.)	Pressure (psig)	Temp (deg F)	Annotation
0	1857.10	96.49	Initial Hydro-static
1	32.05	95.42	Open To Flow (1)
11	35.47	97.11	Shut-In(1)
86	185.29	100.56	End Shut-In(1)
86	35.61	100.52	Open To Flow (2)
116	35.31	101.76	Shut-In(2)
236	97.99	105.42	End Shut-In(2)
237	1813.21	105.87	Final Hydro-static

## Recovery

Length (ft)	Description	Volume (bbl)
5.00	Mud - with oil spots, 100%M	0.02

\* Recovery from multiple tests

## Gas Rates

Choke (inches)	Pressure (psig)	Gas Rate (Mcf/d)





**TRILOBITE  
TESTING, INC.**

# DRILL STEM TEST REPORT

**FLUID SUMMARY**

Samuel Gary Jr. & Associates

**12-11s-22w Trego KS**

1515 Wynkoop Dr. STE 700  
Denver CO, 80202

**Walz Family 1-12**

Job Ticket: 56075

**DST#: 3**

ATTN: Dan Pritchard

Test Start: 2014.02.18 @ 00:49:00

## Mud and Cushion Information

Mud Type: Gel Chem

Cushion Type:

Oil API:

deg API

Mud Weight: 9.00 lb/gal

Cushion Length:

ft

Water Salinity:

ppm

Viscosity: 64.00 sec/qt

Cushion Volume:

bbbl

Water Loss: 8.79 in<sup>3</sup>

Gas Cushion Type:

Resistivity: ohm.m

Gas Cushion Pressure:

psig

Salinity: 4000.00 ppm

Filter Cake: inches

## Recovery Information

Recovery Table

Length ft	Description	Volume bbl
5.00	Mud - with oil spots, 100%M	0.025

Total Length: 5.00 ft      Total Volume: 0.025 bbl

Num Fluid Samples: 0

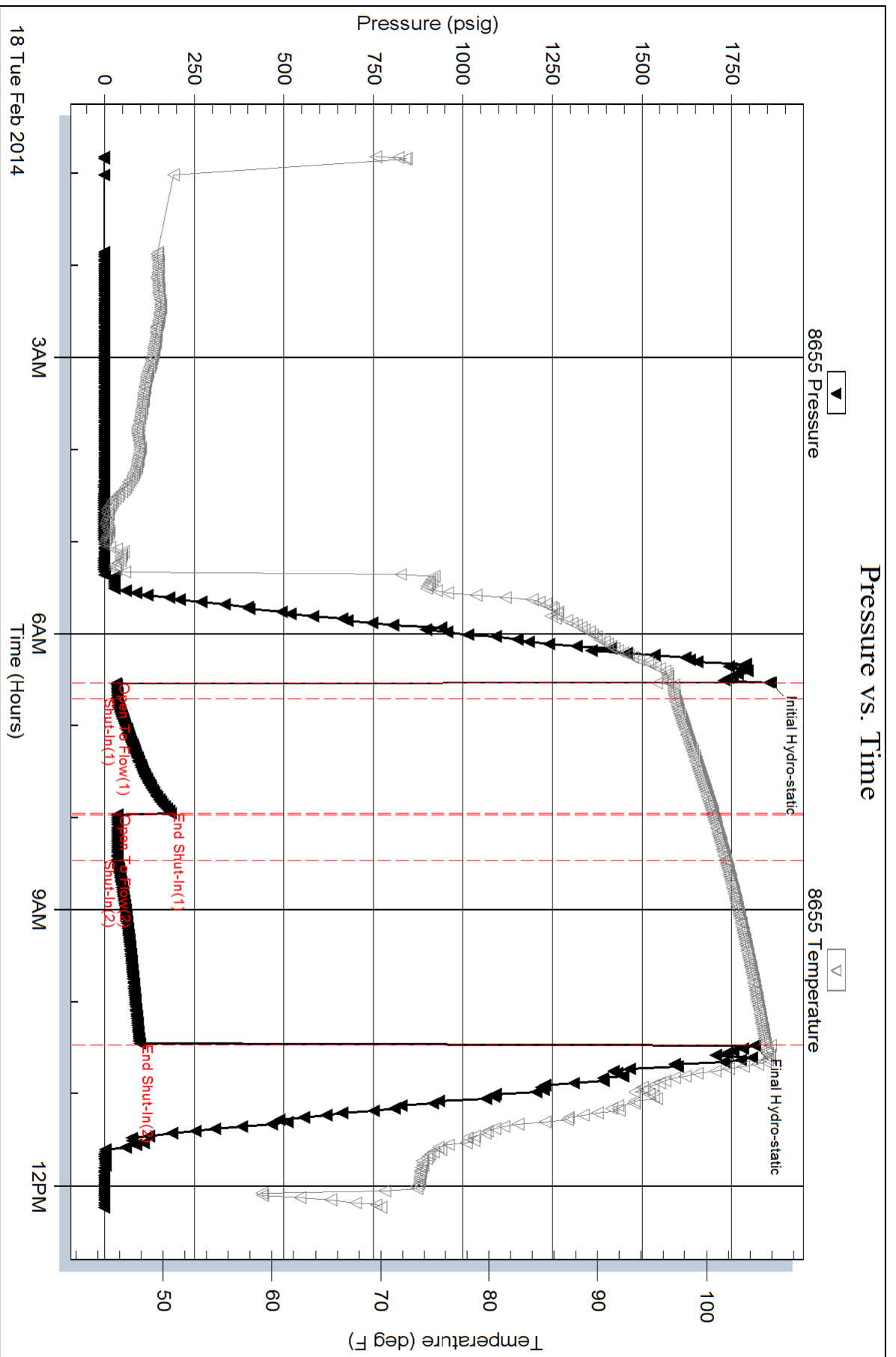
Num Gas Bombs: 0

Serial #:

Laboratory Name:

Laboratory Location:

Recovery Comments: Sampler: 30PSI, 50 ML Oil, 1950 ML M



Serial #: 8875

Fluid

Samuel Gary Jr. & Associates

Walz Family 1-12

DST Test Number: 3

