



## DRILL STEM TEST REPORT

Prepared For: **McCoy Petro. Corp.**

8080 E. Central Ste. 300  
Wichita, KS 67206 - 2366

ATTN: Dave Williams

### **Schwab A #1-7**

#### **7-3os-30w Meade,KS**

Start Date: 2014.03.13 @ 00:36:14

End Date: 2014.03.13 @ 11:04:59

Job Ticket #: 52483                      DST #: 1

Trilobite Testing, Inc  
PO Box 362 Hays, KS 67601  
ph: 785-625-4778 fax: 785-625-5620

Printed: 2014.03.20 @ 14:20:46



**TRILOBITE  
TESTING, INC**

# DRILL STEM TEST REPORT

McCoy Petro. Corp.  
8080 E. Central Ste. 300  
Wichita, KS 67206 - 2366  
ATTN: Dave Williams

**7-3os-30w Meade,KS**  
**Schwab A #1-7**  
Job Ticket: 52483 **DST#: 1**  
Test Start: 2014.03.13 @ 00:36:14

## GENERAL INFORMATION:

Formation: **Chesterian**  
Deviated: No Whipstock: ft (KB)  
Time Tool Opened: 03:32:44  
Time Test Ended: 11:04:59  
Interval: **5252.00 ft (KB) To 5330.00 ft (KB) (TVD)**  
Total Depth: 5330.00 ft (KB) (TVD)  
Hole Diameter: 7.88 inches Hole Condition: Fair  
Test Type: Conventional Bottom Hole (Initial)  
Tester: Ryan Reynolds  
Unit No: 68  
Reference Elevations: 2825.00 ft (KB)  
2816.00 ft (CF)  
KB to GR/CF: 9.00 ft

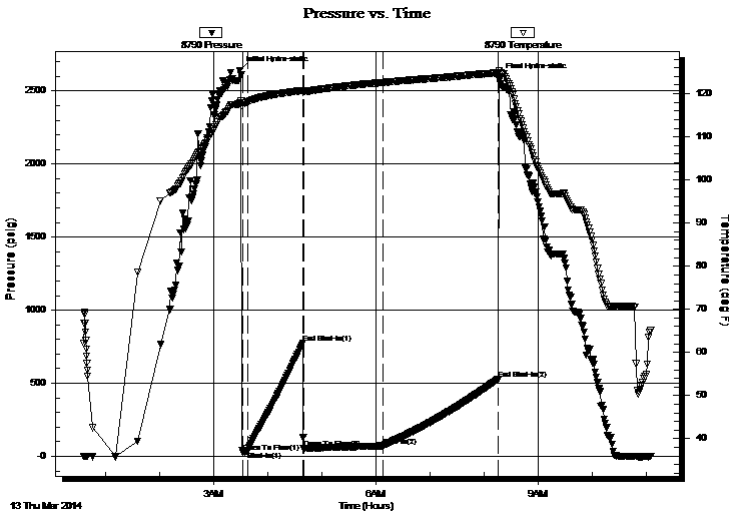
## Serial #: 8790

Inside

Press@RunDepth: 70.65 psig @ 5257.00 ft (KB)  
Start Date: 2014.03.13 End Date: 2014.03.13  
Start Time: 00:36:19 End Time: 11:04:59  
Capacity: 8000.00 psig  
Last Calib.: 2014.03.13  
Time On Btm: 2014.03.13 @ 03:29:29  
Time Off Btm: 2014.03.13 @ 08:16:44

TEST COMMENT: IF: Good blow . 1/2" - 8"  
IS: No blow  
FF: Strong blow . BOB immed. NO GTS.  
FS: No blow .

## PRESSURE SUMMARY



Time (Min.)	Pressure (psig)	Temp (deg F)	Annotation
0	2641.11	117.80	Initial Hydro-static
4	28.01	117.85	Open To Flow (1)
9	35.58	118.09	Shut-In(1)
70	773.23	120.75	End Shut-In(1)
71	53.66	120.51	Open To Flow (2)
159	70.65	122.60	Shut-In(2)
286	529.07	124.81	End Shut-In(2)
288	2594.01	125.41	Final Hydro-static

## Recovery

Length (ft)	Description	Volume (bbl)
100.00	GOCM 20%g, 25%o, 55%m	0.49
90.00	OCM 25%o, 75%m	0.44
0.00	1060' GIP	0.00

## Gas Rates

	Choke (inches)	Pressure (psig)	Gas Rate (m <sup>3</sup> /d)





**TRILOBITE  
TESTING, INC**

# DRILL STEM TEST REPORT

**TOOL DIAGRAM**

McCoy Petro. Corp.

**7-3os-30w Meade,KS**

8080 E. Central Ste. 300  
Wichita, KS 67206 - 2366

**Schwab A #1-7**

Job Ticket: 52483

**DST#: 1**

ATTN: Dave Williams

Test Start: 2014.03.13 @ 00:36:14

## Tool Information

Drill Pipe:	Length: 5001.00 ft	Diameter: 3.80 inches	Volume: 70.15 bbl	Tool Weight: 2400.00 lb
Heavy Wt. Pipe:	Length: 0.00 ft	Diameter: inches	Volume: 0.00 bbl	Weight set on Packer: 21000.00 lb
Drill Collar:	Length: 247.00 ft	Diameter: 2.25 inches	Volume: 1.21 bbl	Weight to Pull Loose: 110000.0 lb
			<u>Total Volume: 71.36 bbl</u>	Tool Chased 0.00 ft
Drill Pipe Above KB:	23.00 ft			String Weight: Initial 83000.00 lb
Depth to Top Packer:	5252.00 ft			Final 84000.00 lb
Depth to Bottom Packer:	ft			
Interval between Packers:	78.00 ft			
Tool Length:	105.00 ft			
Number of Packers:	2	Diameter: 6.75 inches		

Tool Comments:

## Tool Description

Tool Description	Length (ft)	Serial No.	Position	Depth (ft)	Accum. Lengths
Change Over Sub	1.00			5226.00	
Shut In Tool	5.00			5231.00	
Hydraulic tool	5.00			5236.00	
Jars	5.00			5241.00	
Safety Joint	2.00			5243.00	
Packer	5.00			5248.00	27.00 Bottom Of Top Packer
Packer	4.00			5252.00	
Stubb	1.00			5253.00	
Perforations	3.00			5256.00	
Change Over Sub	1.00			5257.00	
Recorder	0.00	8790	Inside	5257.00	
Recorder	0.00	8792	Outside	5257.00	
Drill Pipe	64.00			5321.00	
Change Over Sub	1.00			5322.00	
Perforations	5.00			5327.00	
Bullnose	3.00			5330.00	78.00 Bottom Packers & Anchor
<b>Total Tool Length:</b>	<b>105.00</b>				



**TRILOBITE  
TESTING, INC**

# DRILL STEM TEST REPORT

**FLUID SUMMARY**

McCoy Petro. Corp.

**7-30s-30w Meade,KS**

8080 E. Central Ste. 300  
Wichita, KS 67206 - 2366

**Schwab A #1-7**

Job Ticket: 52483

**DST#: 1**

ATTN: Dave Williams

Test Start: 2014.03.13 @ 00:36:14

## Mud and Cushion Information

Mud Type: Gel Chem

Cushion Type:

Oil API:

deg API

Mud Weight: 9.00 lb/gal

Cushion Length:

ft

Water Salinity:

3200 ppm

Viscosity: 50.00 sec/qt

Cushion Volume:

bbbl

Water Loss: 8.78 in<sup>3</sup>

Gas Cushion Type:

Resistivity: ohm.m

Gas Cushion Pressure:

psig

Salinity: 3200.00 ppm

Filter Cake: 0.02 inches

## Recovery Information

Recovery Table

Length ft	Description	Volume bbbl
100.00	GOCM 20%g, 25%o, 55%m	0.492
90.00	OCM 25%o, 75%m	0.443
0.00	1060' GIP	0.000

Total Length: 190.00 ft

Total Volume: 0.935 bbl

Num Fluid Samples: 0

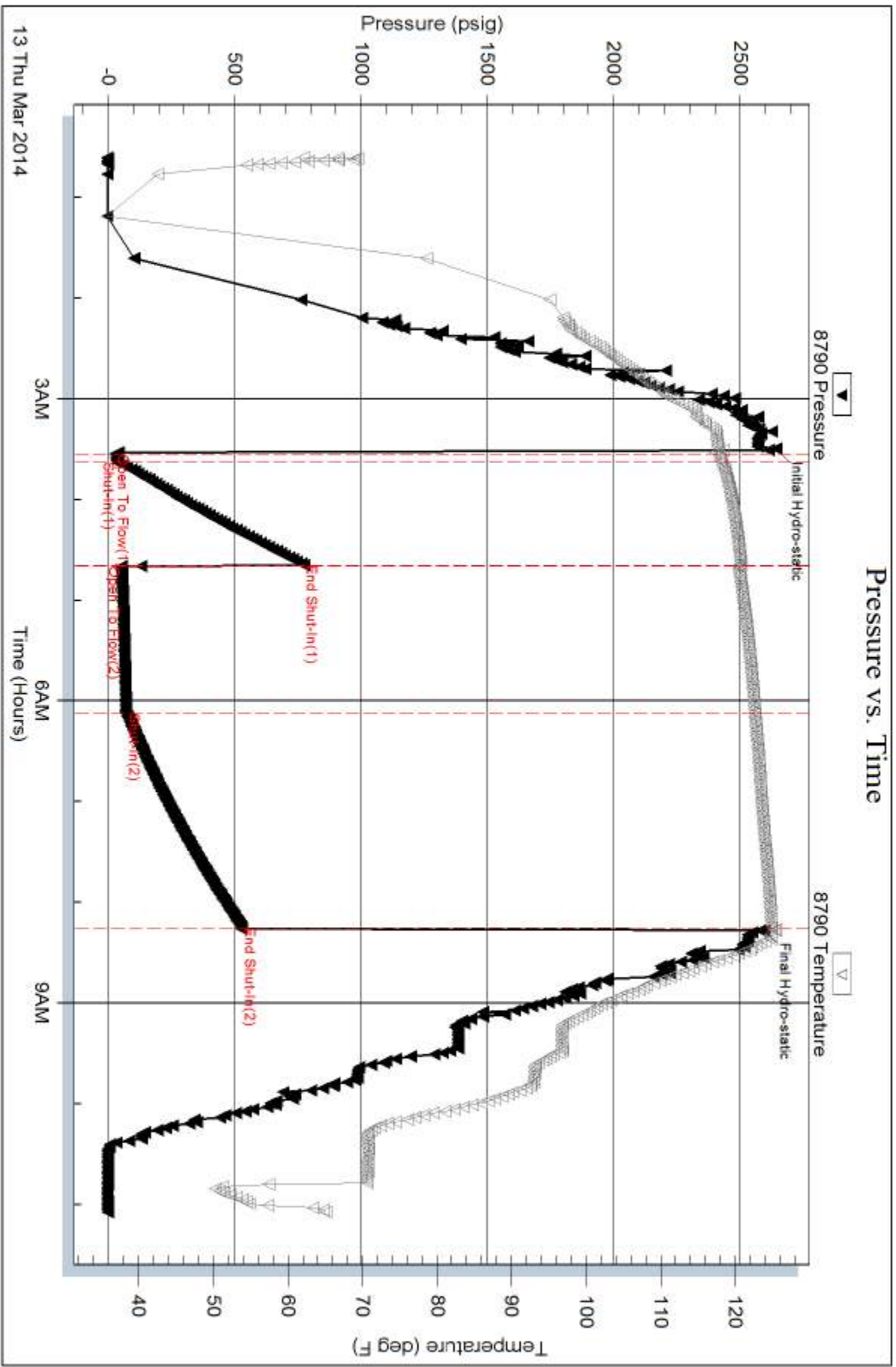
Num Gas Bombs: 0

Serial #: none

Laboratory Name:

Laboratory Location:

Recovery Comments:

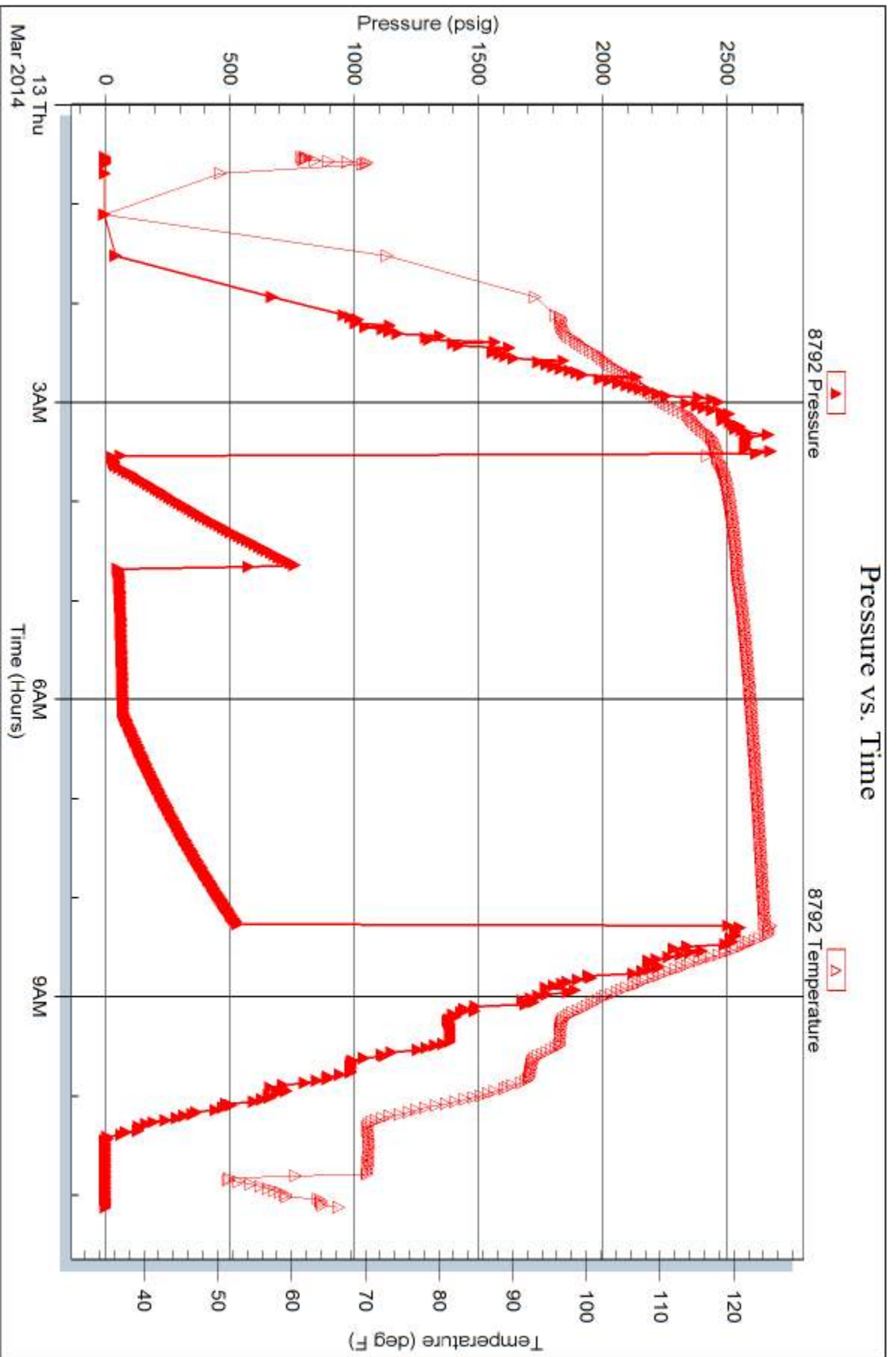


Serial #: 8792

Outside McCoy Petro. Corp.

Schw ab A #1-7

DST Test Number: 1





# TRILOBITE TESTING INC.

1515 Commerce Parkway • Hays, Kansas 67601

## Test Ticket

NO. 52483

Well Name & No. Schwab "A" 1-7 Test No. 1 Date 3-12-14  
 Company McCoy Petro. Corp. Elevation 2825 KB 2816 GL  
 Address 8080 E. Central Ste. 300 Wichita, KS 67206-2366  
 Co. Rep / Geo. Dave Williams Rig Sterling 2  
 Location: Sec. 7 Twp. 30s. Rge. 30w. Co. Meade State KS

Interval Tested 5252-5330 Zone Tested Chesterian  
 Anchor Length 78' Drill Pipe Run 5001 Mud Wt. 9.4  
 Top Packer Depth 5247 Drill Collars Run 247 Vis 50  
 Bottom Packer Depth 5252 Wt. Pipe Run Ø WL 8.8  
 Total Depth 5330 Chlorides 3200 ppm System LCM 6#  
 Blow Description IF: Good blow. 1/2" - 8" ISI: No blow.  
FF: Strong blow. BoB immed. No GTS FSI: No blow

Rec	Feet of	%gas	%oil	%water	%mud
<u>1060</u>	<u>GTP</u>				
<u>90</u>	<u>OCM</u>	<u>Ø</u>	<u>25</u>	<u>Ø</u>	<u>75</u>
<u>100</u>	<u>6OCM</u>	<u>20</u>	<u>25</u>		<u>55</u>
Rec	Feet of	%gas	%oil	%water	%mud
Rec	Feet of	%gas	%oil	%water	%mud

Rec Total 1250 BHT 125 Gravity N/C API RW N/C @ N/C °F Chlorides 3200 ppm  
 (A) Initial Hydrostatic 2641  Test: 1350 T-On Location 2315  
 (B) First Initial Flow 28  Jars 250 T-Started 0036  
 (C) First Final Flow 36  Safety Joint 75 T-Open 0330  
 (D) Initial Shut-In 773  Circ Sub \_\_\_\_\_ T-Pulled 0807  
 (E) Second Initial Flow 54  Hourly Standby \_\_\_\_\_ T-Out 1105  
 (F) Second Final Flow 71  Mileage 248 384.40 Comments \_\_\_\_\_  
 (G) Final Shut-In 529  Sampler \_\_\_\_\_  
 (H) Final Hydrostatic 2594  Straddle \_\_\_\_\_  
 Shale Packer \_\_\_\_\_  
 Extra Packer \_\_\_\_\_  
 Extra Recorder \_\_\_\_\_  
 Day Standby \_\_\_\_\_  
 Accessibility \_\_\_\_\_  
 Sub Total 2059.40

Initial Open 5  
 Initial Shut-In 60  
 Final Flow 90  
 Final Shut-In 120

Approved By Daniel P. Williams Our Representative Ryan Reynolds

Sub Total 2059.40 Total 2059.40 MP/DST Disc't \_\_\_\_\_

Trilobite Testing Inc. shall not be liable for damaged of any kind of the property or personnel of the one for whom a test is made, or for any loss suffered or sustained, directly or indirectly, through the use of its equipment, or its statements or opinion concerning the results of any test, tools lost or damaged in the hole shall be paid for at cost by the party for whom the test is made.