



DRILL STEM TEST REPORT

Prepared For: **McCoy Petro. Corp.**

8080 E. Central Ste. 300
Wichita, KS 67206

ATTN: Larry Nicholson

23-30s-19w Kiowa, KS

McKinney Trust A #2-23

Start Date: 2014.03.17 @ 18:13:21

End Date: 2014.03.18 @ 05:07:51

Job Ticket #: 52484 DST #: 1

Trilobite Testing, Inc

PO Box 362 Hays, KS 67601

ph: 785-625-4778 fax: 785-625-5620

Printed: 2014.03.21 @ 14:02:17



TRILOBITE TESTING, INC

DRILL STEM TEST REPORT

McCoy Petro. Corp.
 8080 E. Central Ste. 300
 Wichita, KS 67206
 ATTN: Larry Nicholson

McKinney Trust A #2-23
23-30s-19w Kiowa, KS
 Job Ticket: 52484 **DST#: 1**
 Test Start: 2014.03.17 @ 18:13:21

GENERAL INFORMATION:

Formation: **Miss.**
 Deviated: No Whipstock: ft (KB)
 Time Tool Opened: 20:40:51
 Time Test Ended: 05:07:51
 Interval: **5060.00 ft (KB) To 5111.00 ft (KB) (TVD)**
 Total Depth: 5111.00 ft (KB) (TVD)
 Hole Diameter: 7.88 inches Hole Condition: Fair
 Test Type: Conventional Bottom Hole (Initial)
 Tester: Ryan Reynolds
 Unit No: 68
 Reference Elevations: 2231.00 ft (KB)
 2222.00 ft (CF)
 KB to GR/CF: 9.00 ft

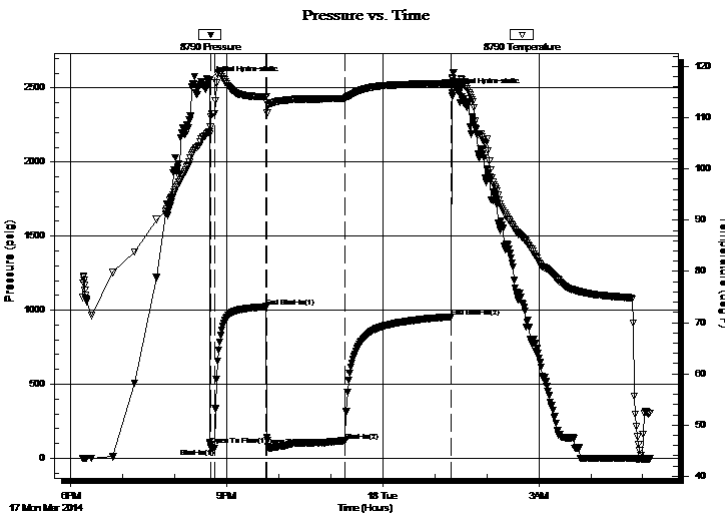
Serial #: 8790

Inside

Press@RunDepth: 116.11 psig @ 5065.00 ft (KB) Capacity: 8000.00 psig
 Start Date: 2014.03.17 End Date: 2014.03.18 Last Calib.: 2014.03.18
 Start Time: 18:13:26 End Time: 05:07:51 Time On Btm: 2014.03.17 @ 20:39:51
 Time Off Btm: 2014.03.18 @ 01:19:36

TEST COMMENT: IF: Strong blow . BOB @ 20 sec.
 IS: No blow
 FF: Strong blow . BOB immed. GTS @ 2 min.
 FS: No blow

PRESSURE SUMMARY



Time (Min.)	Pressure (psig)	Temp (deg F)	Annotation
0	2554.00	107.31	Initial Hydro-static
1	91.58	108.15	Open To Flow (1)
6	67.01	110.80	Shut-In(1)
66	1024.28	114.18	End Shut-In(1)
67	138.91	112.99	Open To Flow (2)
157	116.11	113.81	Shut-In(2)
279	955.89	116.80	End Shut-In(2)
280	2466.22	117.85	Final Hydro-static

Recovery

Length (ft)	Description	Volume (bbl)
180.00	MWGC0 3%w, 5%w, 15%g, 77%o	0.89
130.00	WGMCO 10%w, 17%g, 25%w, 48%o	1.48
90.00	OWCM 2%o, 3%w, 95%w	1.26

Gas Rates

	Choke (inches)	Pressure (psig)	Gas Rate (Mcf/d)
First Gas Rate	0.50	2.00	13.49
Last Gas Rate	0.50	2.50	16.86
Max. Gas Rate	0.50	2.50	16.86



TRILOBITE
TESTING, INC

DRILL STEM TEST REPORT

McCoy Petro. Corp.

McKinney Trust A #2-23

8080 E. Central Ste. 300
Wichita, KS 67206

23-30s-19w Kiowa, KS

ATTN: Larry Nicholson

Job Ticket: 52484

DST#: 1

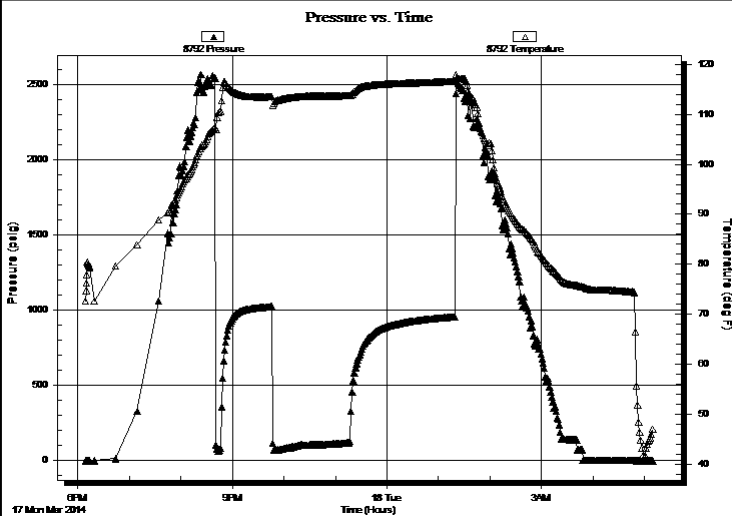
Test Start: 2014.03.17 @ 18:13:21

GENERAL INFORMATION:

Formation: **Miss.**
 Deviated: No Whipstock: ft (KB)
 Time Tool Opened: 20:40:51
 Time Test Ended: 05:07:51
 Interval: **5060.00 ft (KB) To 5111.00 ft (KB) (TVD)**
 Total Depth: 5111.00 ft (KB) (TVD)
 Hole Diameter: 7.88 inches Hole Condition: Fair
 Test Type: Conventional Bottom Hole (Initial)
 Tester: Ryan Reynolds
 Unit No: 68
 Reference Elevations: 2231.00 ft (KB)
 2222.00 ft (CF)
 KB to GR/CF: 9.00 ft

Serial #: 8792 Outside
 Press@RunDepth: psig @ 5065.00 ft (KB) Capacity: 8000.00 psig
 Start Date: 2014.03.17 End Date: 2014.03.18 Last Calib.: 2014.03.18
 Start Time: 18:08:55 End Time: 05:10:35 Time On Btm:
 Time Off Btm:

TEST COMMENT: IF: Strong blow . BOB @ 20 sec.
 IS: No blow
 FF: Strong blow . BOB immed. GTS @ 2 min.
 FS: No blow



PRESSURE SUMMARY

Time (Min.)	Pressure (psig)	Temp (deg F)	Annotation

Recovery

Length (ft)	Description	Volume (bbl)
180.00	MWGC0 3%w, 5%w, 15%g, 77%o	0.89
130.00	WGMCO 10%w, 17%g, 25%w, 48%o	1.48
90.00	OWCM 2%o, 3%w, 95%w	1.26

Gas Rates

	Choke (inches)	Pressure (psig)	Gas Rate (Mcf/d)
First Gas Rate	0.50	2.00	13.49
Last Gas Rate	0.50	2.50	16.86
Max. Gas Rate	0.50	2.50	16.86



**TRILOBITE
TESTING, INC**

DRILL STEM TEST REPORT

TOOL DIAGRAM

McCoy Petro. Corp.

McKinney Trust A #2-23

8080 E. Central Ste. 300
Wichita, KS 67206

23-30s-19w Kiowa, KS

Job Ticket: 52484

DST#: 1

ATTN: Larry Nicholson

Test Start: 2014.03.17 @ 18:13:21

Tool Information

Drill Pipe:	Length: 4842.00 ft	Diameter: 3.80 inches	Volume: 67.92 bbl	Tool Weight: 2400.00 lb
Heavy Wt. Pipe:	Length: ft	Diameter: inches	Volume: - bbl	Weight set on Packer: 20000.00 lb
Drill Collar:	Length: 218.00 ft	Diameter: 2.25 inches	Volume: 1.07 bbl	Weight to Pull Loose: 140000.0 lb
			<u>Total Volume: - bbl</u>	Tool Chased 0.00 ft
Drill Pipe Above KB:	27.00 ft			String Weight: Initial 96000.00 lb
Depth to Top Packer:	5060.00 ft			Final 98000.00 lb
Depth to Bottom Packer:	ft			
Interval between Packers:	51.00 ft			
Tool Length:	78.00 ft			
Number of Packers:	2	Diameter: 6.75 inches		

Tool Comments:

Tool Description

Tool Description	Length (ft)	Serial No.	Position	Depth (ft)	Accum. Lengths
Change Over Sub	1.00			5034.00	
Shut In Tool	5.00			5039.00	
Hydraulic tool	5.00			5044.00	
Jars	5.00			5049.00	
Safety Joint	2.00			5051.00	
Packer	5.00			5056.00	27.00 Bottom Of Top Packer
Packer	4.00			5060.00	
Stubb	1.00			5061.00	
Perforations	3.00			5064.00	
Change Over Sub	1.00			5065.00	
Recorder	0.00	8790	Inside	5065.00	
Recorder	0.00	8792	Outside	5065.00	
Drill Pipe	32.00			5097.00	
Change Over Sub	1.00			5098.00	
Perforations	10.00			5108.00	
Bullnose	3.00			5111.00	51.00 Bottom Packers & Anchor
Total Tool Length:	78.00				



**TRILOBITE
TESTING, INC**

DRILL STEM TEST REPORT

FLUID SUMMARY

McCoy Petro. Corp.

McKinney Trust A #2-23

8080 E. Central Ste. 300
Wichita, KS 67206

23-30s-19w Kiowa, KS

Job Ticket: 52484

DST#: 1

ATTN: Larry Nicholson

Test Start: 2014.03.17 @ 18:13:21

Mud and Cushion Information

Mud Type: Gel Chem
Mud Weight: 9.00 lb/gal
Viscosity: 45.00 sec/qt
Water Loss: 10.37 in³
Resistivity: ohm.m
Salinity: 6000.00 ppm
Filter Cake: 0.02 inches

Cushion Type:
Cushion Length: ft
Cushion Volume: bbl
Gas Cushion Type:
Gas Cushion Pressure: psig

Oil API: deg API
Water Salinity: 92000 ppm

Recovery Information

Recovery Table

Length ft	Description	Volume bbl
180.00	MWGCO 3% <i>m</i> , 5% <i>w</i> , 15% <i>g</i> , 77% <i>o</i>	0.885
130.00	WGMCO 10% <i>w</i> , 17% <i>g</i> , 25% <i>m</i> , 48% <i>o</i>	1.477
90.00	OWCM 2% <i>o</i> , 3% <i>w</i> , 95% <i>m</i>	1.262

Total Length: 400.00 ft Total Volume: 3.624 bbl

Num Fluid Samples: 1

Num Gas Bombs: 1

Serial #: RR-1

Laboratory Name: Caraway

Laboratory Location: Liberal, KS

Recovery Comments:



**TRILOBITE
TESTING, INC.**

DRILL STEM TEST REPORT

GAS RATES

McCoy Petro. Corp.

McKinney Trust A #2-23

8080 E. Central Ste. 300
Wichita, KS 67206

23-30s-19w Kiowa, KS

Job Ticket: 52484

DST#: 1

ATTN: Larry Nicholson

Test Start: 2014.03.17 @ 18:13:21

Gas Rates Information

Temperature: 59 (deg F)
Relative Density: 0.65
Z Factor: 0.8

Gas Rates Table

Flow Period	Elapsed Time	Choke (inches)	Pressure (psig)	Gas Rate (Mcf/d)
2	10	0.50	2.00	13.49
2	10	0.50	2.00	13.49
2	20	0.50	2.00	13.49
2	30	0.50	2.00	13.49
2	40	0.50	2.00	13.49
2	50	0.50	2.00	13.49
2	60	0.50	2.00	13.49
2	70	0.50	2.50	16.86
2	80	0.50	2.50	16.86

Serial #: 8790

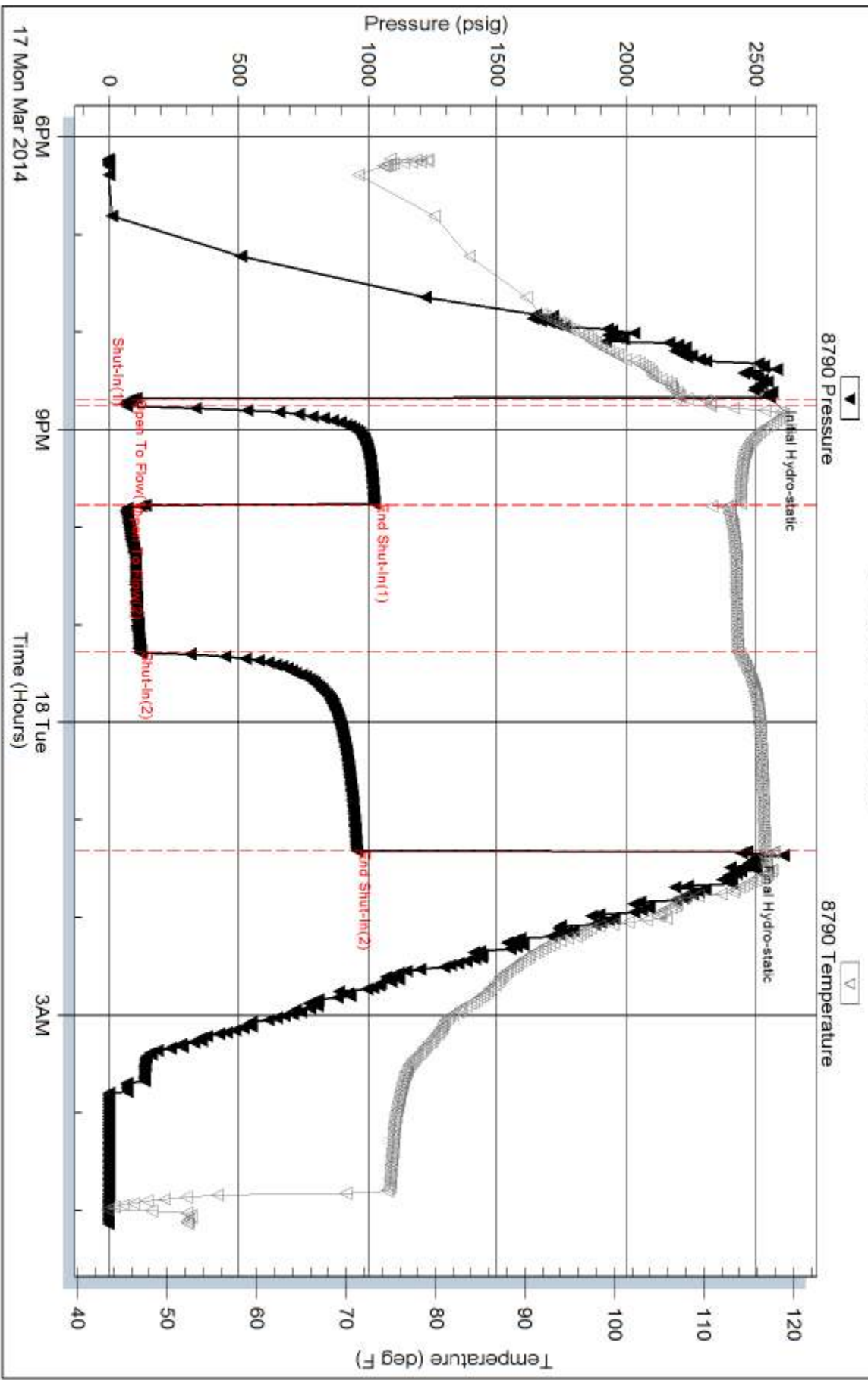
Inside

McCoy Petro. Corp.

23-30s-19w Kiow a. KS

DST Test Number: 1

Pressure vs. Time

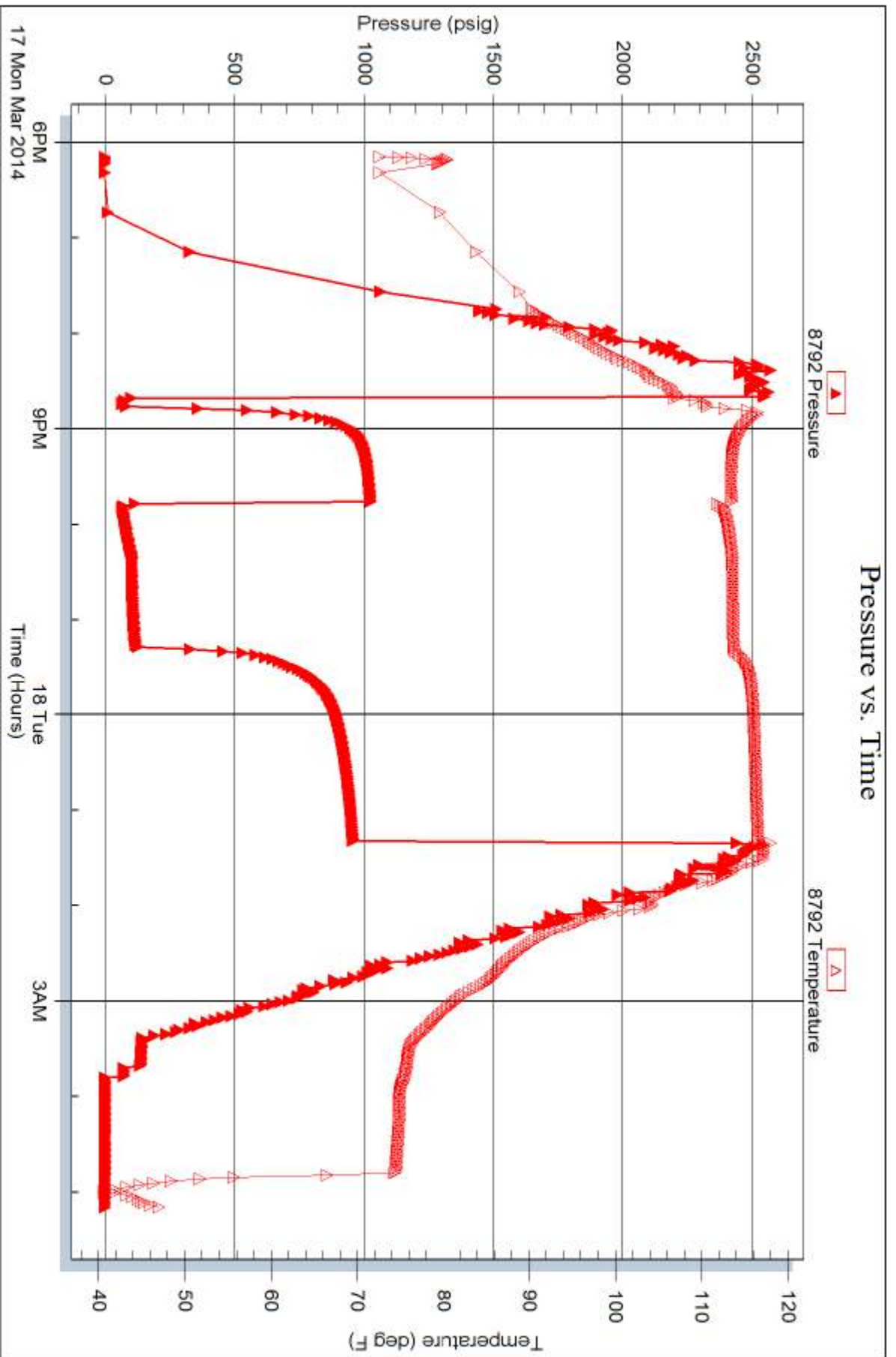


Serial #: 8792

Outside McCoy Petro. Corp.

23-30s-19w Kiow a. KS

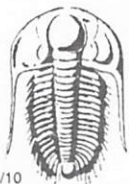
DST Test Number: 1



Trilobite Testing, Inc

Ref. No: 52484

Printed: 2014.03.21 @ 14:02:19



TRILOBITE TESTING INC.

1515 Commerce Parkway • Hays, Kansas 67601

Test Ticket

NO. 52484

Well Name & No. McKinney Trust "A" 2-23 Test No. 1 Date 3-17-14
 Company McCoy Petro. Corp. Elevation 2231 KB 2222 GL
 Address 8080 E. Central Ste. 300 Wichita, KS 67206
 Co. Rep / Geo. Larry Nicholson Rig Sterling 4
 Location: Sec. 23 Twp. 30s. Rge. 19w. Co. Kiowa State KS

Interval Tested 5060-5111 Zone Tested Miss.
 Anchor Length 51 Drill Pipe Run 4842 Mud Wt. 9.4
 Top Packer Depth 5055 Drill Collars Run 218 Vis 45
 Bottom Packer Depth 5060 Wt. Pipe Run Ø WL 10.4
 Total Depth 5111 Chlorides 6000 ppm System LCM 3#

Blow Description IF: Strong blow. BOB @ 20 sec. FSI: No blow
FF: Strong blow. BOB immed. GTS @ 2 min.
FSI: No blow.

Rec	Feet of	%gas	%oil	%water	%mud
90	OWCM	2	3	95	
130	WGMCO	17	48	10	25
180	MWGLCO	15	77	5	3
Rec	Feet of	%gas	%oil	%water	%mud
Rec	Feet of	%gas	%oil	%water	%mud

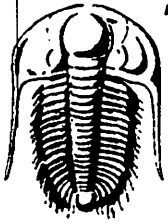
Rec Total 400 BHT 117 Gravity N/L API RW 0.15 @ 40 °F Chlorides 9200 ppm
 (A) Initial Hydrostatic 2554 Test 1350 T-On Location 1730
 (B) First Initial Flow 92 Jars 250 T-Started 1813
 (C) First Final Flow 67 Safety Joint 75 T-Open 2040
 (D) Initial Shut-In 1024 Circ Sub _____ T-Pulled 0115
 (E) Second Initial Flow 139 Hourly Standby _____ T-Out 0508
 (F) Second Final Flow 116 Mileage 96 148.80 Comments _____
 (G) Final Shut-In 956 Sampler _____
 (H) Final Hydrostatic 2466 Straddle _____
 Shale Packer _____
 Shale Packer _____
 Extra Packer _____
 Extra Recorder _____
 Day Standby _____
 Accessibility _____

Initial Open 5
 Initial Shut-In 60
 Final Flow 90
 Final Shut-In 120

Sub Total 1823.80

MP/DST Disc't _____

Approved By _____ Our Representative Ryan Reynolds
 Trilobite Testing Inc. shall not be liable for damaged of any kind of the property or personnel of the one for whom a test is made, or for any loss suffered or sustained, directly or indirectly through the use of its equipment, or its statements or opinion concerning the results of any test, tools lost or damaged in the hole shall be paid for at cost by the party for whom the test is made.



TRILOBITE TESTING INC.

P.O. Box 362 • Hays, Kansas 67601 • (785) 625-4778

GAS VOLUME REPORT

McLoy Petro. Corp.
OPERATOR

McKinney A 2-23 (Miss)
WELL NAME AND NO.

1
DST NO.

Final Flow Period GTS @ 3min.

Min.	Ins. of Water PSIG	Orifice Size	★ CF/D	Min.	Ins. of Water PSIG	Orifice Size	CF/D
10	2 [#]	1/2"	47700				
20	2 [#]	1/2"	47700				
30	2 [#]	1/2"	47700				
40	2 [#]	1/2"	47700				
50	2 [#]	1/2"	47700				
60	2 [#]	1/2"	47700				
70	2 1/2 [#]	1/2"	53400				
80	2 1/2 [#]	1/2"	53400				
90	2 1/2 [#]	1/2"	53400				

Remarks: