



TRILOBITE TESTING, INC

DRILL STEM TEST REPORT

Samuel Gary Jr & Assoc Inc

32-10s-21w Graham

1515 Wynkoop
STE 700
Denver Co 80202
ATTN: Chris Mitchell

Parks 1-32

Job Ticket: 56248

DST#: 1

Test Start: 2014.02.27 @ 09:35:28

GENERAL INFORMATION:

Formation: **LKC A-C**

Deviated: No Whipstock: ft (KB)

Time Tool Opened: 11:47:08

Time Test Ended: 17:24:37

Test Type: Conventional Bottom Hole (Initial)

Tester: Ray Schwager

Unit No: 70

Interval: 3503.00 ft (KB) To 3568.00 ft (KB) (TVD)

Reference Elevations: 2214.00 ft (KB)

Total Depth: 3568.00 ft (KB) (TVD)

2206.00 ft (CF)

Hole Diameter: 7.85 inches Hole Condition: Fair

KB to GR/CF: 8.00 ft

Serial #: 8369

Inside

Press@RunDepth: 55.23 psig @ 3507.00 ft (KB)

Capacity: 8000.00 psig

Start Date: 2014.02.27

End Date:

2014.02.27

Last Calib.:

2014.02.27

Start Time: 09:35:28

End Time:

17:24:37

Time On Btm:

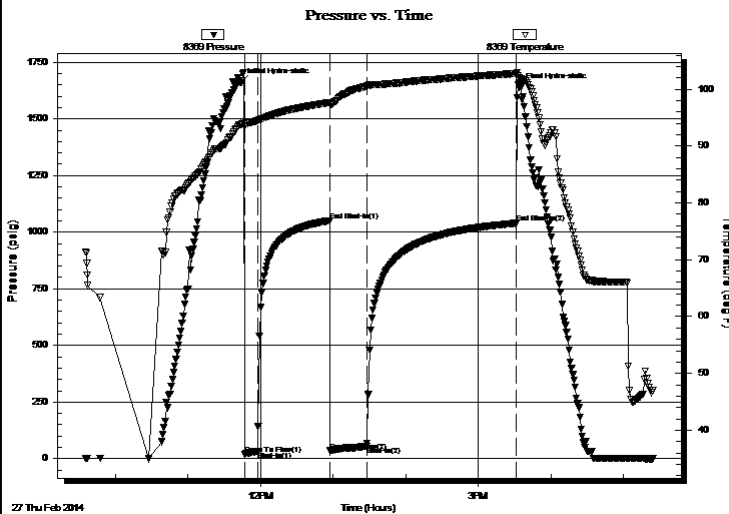
2014.02.27 @ 11:43:38

Time Off Btm:

2014.02.27 @ 15:33:52

TEST COMMENT: 10-IFP-w k bl thru-out 1/2" to 2 1/2" bl
60-ISIP-no bl
30-FFP-w k bl thru-out 1/2" to 3" bl
120-FSIP-no bl

PRESSURE SUMMARY



Time (Min.)	Pressure (psig)	Temp (deg F)	Annotation
0	1660.92	93.73	Initial Hydro-static
4	20.00	93.45	Open To Flow (1)
14	32.63	94.43	Shut-In(1)
74	1050.45	97.65	End Shut-In(1)
74	34.38	97.39	Open To Flow (2)
105	55.23	100.54	Shut-In(2)
228	1039.02	102.74	End Shut-In(2)
231	1636.56	102.06	Final Hydro-static

Recovery

Length (ft)	Description	Volume (bbl)
70.00	WM 30%W70%M	0.98

Gas Rates

Choke (inches)	Pressure (psig)	Gas Rate (Mcf/d)



**TRILOBITE
TESTING, INC**

DRILL STEM TEST REPORT

FLUID SUMMARY

Samuel Gary Jr & Assoc Inc

32-10s-21w Graham

1515 Wynkoop
STE 700
Denver Co 80202
ATTN: Chris Mitchell

Parks 1-32

Job Ticket: 56248

DST#: 1

Test Start: 2014.02.27 @ 09:35:28

Mud and Cushion Information

Mud Type: Gel Chem

Mud Weight: 9.00 lb/gal

Viscosity: 60.00 sec/qt

Water Loss: 7.18 in³

Resistivity: ohm.m

Salinity: 1800.00 ppm

Filter Cake: 1.00 inches

Cushion Type:

Cushion Length: ft

Cushion Volume: bbl

Gas Cushion Type:

Gas Cushion Pressure: psig

Oil API:

deg API

Water Salinity: 50000 ppm

Recovery Information

Recovery Table

Length ft	Description	Volume bbl
70.00	WM 30%W70%M	0.982

Total Length: 70.00 ft Total Volume: 0.982 bbl

Num Fluid Samples: 0

Num Gas Bombs: 0

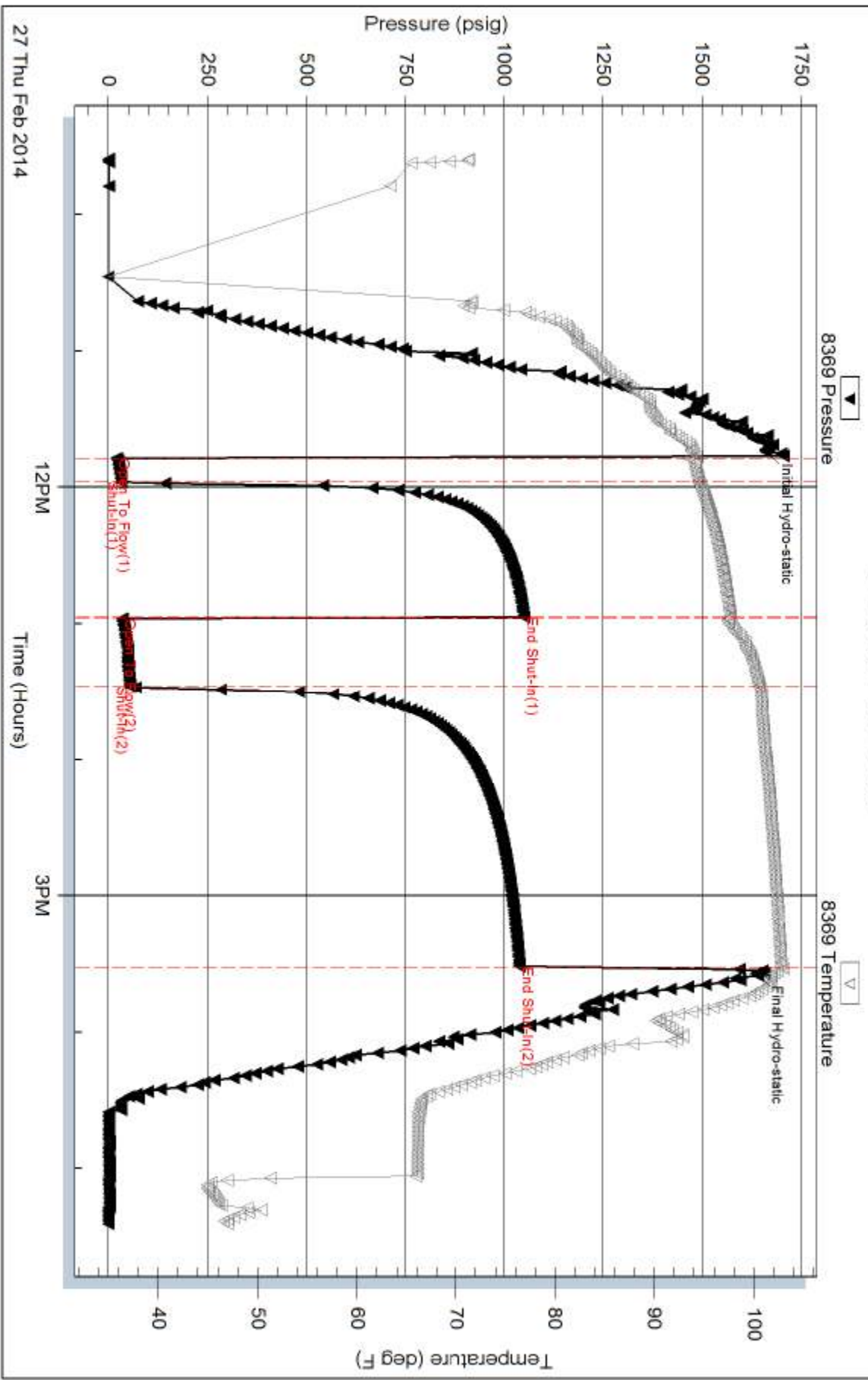
Serial #:

Laboratory Name:

Laboratory Location:

Recovery Comments: Sampler Data: PSI 100# 300ML Water 700MLMud
RW .23 @ 45F

Pressure vs. Time



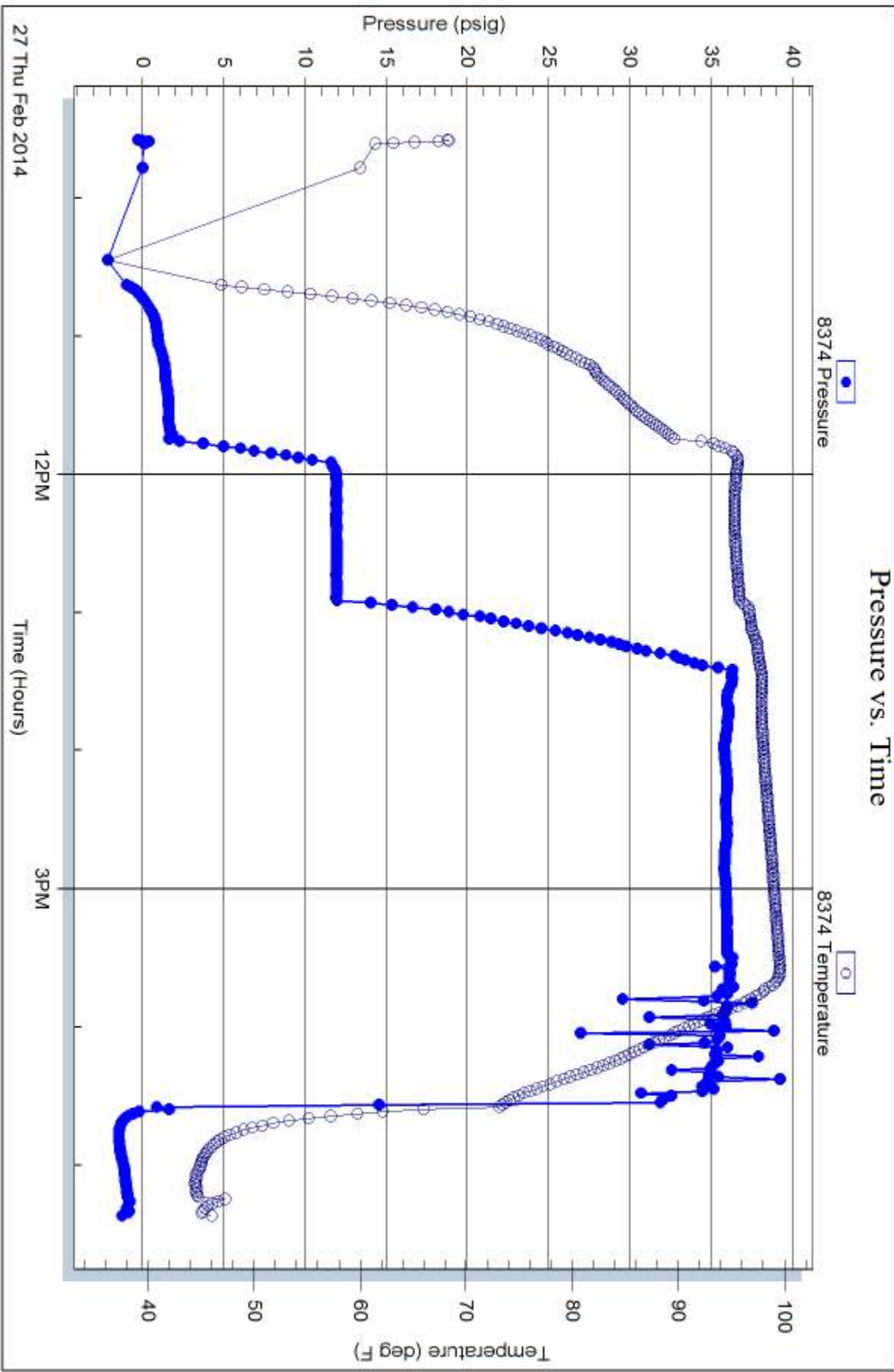
Serial #: 8374

Fluid

Samuel Gary Jr & Assoc Inc

Parks 1-32

DST Test Number: 1



Trilobite Testing, Inc

Ref. No: 56248

Printed: 2014.02.28 @ 08:22:56