



TRILOBITE TESTING, INC.

DRILL STEM TEST REPORT

Mkol oil L.L.C
 1407 WASHINGTON CIRCLE
 HAYS KS,
 67601
 ATTN: MARK DOWNING/ LARRY

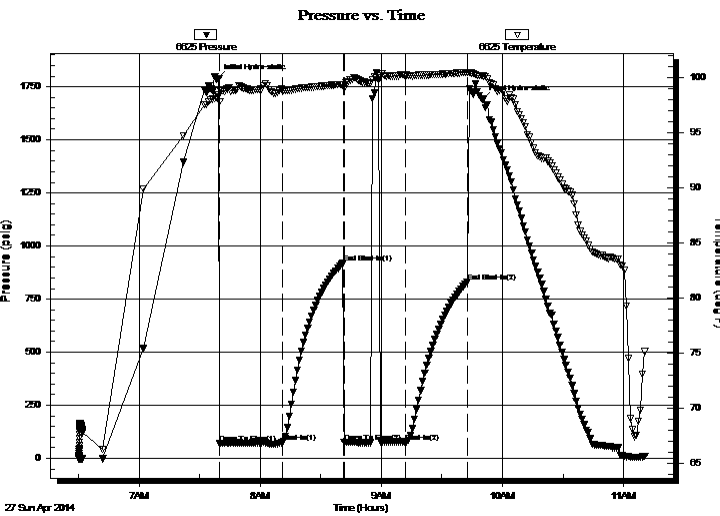
SEC. 23 - 10 s. - 17 w./ Rooks
Russell # 2-23
 Job Ticket: 57612 **DST#: 2**
 Test Start: 2014.04.27 @ 06:30:00

GENERAL INFORMATION:

Formation: **L.K.C. " H - K"**
 Deviated: No Whipstock: ft (KB)
 Test Type: Conventional Bottom Hole (Reset)
 Time Tool Opened: 07:40:00 Tester: Bob Hamel
 Time Test Ended: 11:10:30 Unit No: 67
 Interval: **3435.00 ft (KB) To 3540.00 ft (KB) (TVD)** Reference Elevations: 2088.00 ft (KB)
 Total Depth: 3540.00 ft (KB) (TVD) 2082.00 ft (CF)
 Hole Diameter: 7.88 inches Hole Condition: Fair KB to GR/CF: 6.00 ft

Serial #: 6625 Inside
 Press @ Run Depth: 77.10 psig @ 3531.00 ft (KB) Capacity: 8000.00 psig
 Start Date: 2014.04.27 End Date: 2014.04.27 Last Calib.: 2014.04.27
 Start Time: 06:30:01 End Time: 11:10:30 Time On Btm: 2014.04.27 @ 07:39:00
 Time Off Btm: 2014.04.27 @ 09:50:00

TEST COMMENT: I.F. - 30 1/2" INT. BLOW BUILT TO (1 1/2" IN 30 MIN.)
 I.S.I. - 30 - NO B.B.
 F.F. - 30 - W.S.B. STARTED @ 15 MIN. AFTER FLUSHING TOOL NO BUILD
 F.S.I. - 30 - NO B.B.



PRESSURE SUMMARY

Time (Min.)	Pressure (psig)	Temp (deg F)	Annotation
0	1788.56	98.39	Initial Hydro-static
1	72.43	97.79	Open To Flow (1)
32	75.96	98.89	Shut-In(1)
62	919.74	99.36	End Shut-In(1)
63	77.20	99.00	Open To Flow (2)
93	77.10	100.18	Shut-In(2)
124	831.30	100.44	End Shut-In(2)
131	1690.98	100.13	Final Hydro-static

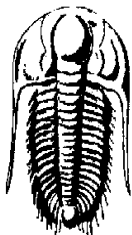
Recovery

Length (ft)	Description	Volume (bbl)
25.00	MUD 100% (FEW OIL SPECS IN TOOL)	0.35

* Recovery from multiple tests

Gas Rates

Choke (inches)	Pressure (psig)	Gas Rate (Mcf/d)



TRILOBITE
TESTING, INC.

DRILL STEM TEST REPORT

Mkol oil L.L.C

SEC. 23 - 10 s. - 17 w./ Rooks

1407 WASHINGTON CIRCLE
HAYS KS,
67601

Russell # 2-23

Job Ticket: 57612

DST#: 2

ATTN: MARK DOWNING/ LARRY

Test Start: 2014.04.27 @ 06:30:00

GENERAL INFORMATION:

Formation: **L.K.C. " H - K "**

Deviated: No Whipstock: ft (KB)

Time Tool Opened: 07:40:00

Time Test Ended: 11:10:30

Test Type: Conventional Bottom Hole (Reset)

Tester: Bob Hamel

Unit No: 67

Interval: 3435.00 ft (KB) To 3540.00 ft (KB) (TVD)

Total Depth: 3540.00 ft (KB) (TVD)

Hole Diameter: 7.88 inches Hole Condition: Fair

Reference Elevations: 2088.00 ft (KB)

2082.00 ft (CF)

KB to GR/CF: 6.00 ft

Serial #: 8319

Outside

Press @ Run Depth: psig @ 3531.00 ft (KB)

Capacity: 8000.00 psig

Start Date: 2014.04.27

End Date: 2014.04.27

Last Calib.: 2014.04.27

Start Time: 06:30:01

End Time: 11:10:30

Time On Btm:

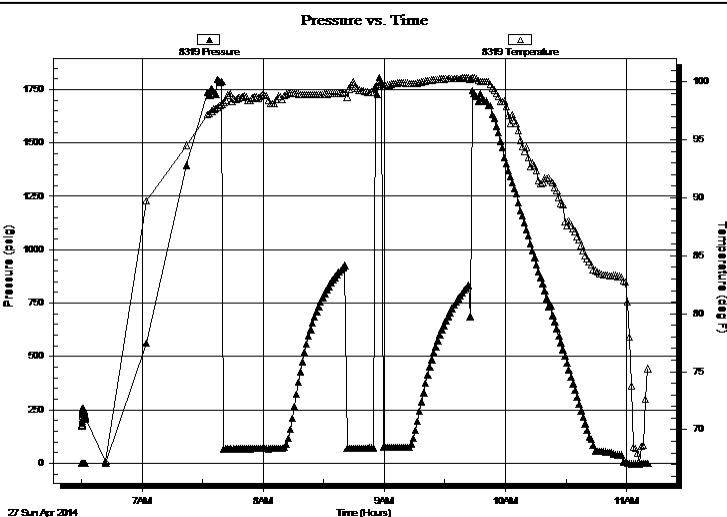
Time Off Btm:

TEST COMMENT: I.F. - 30 1/2" INT. BLOW BUILT TO (1 1/2" IN 30 MIN.)

I.S.I. - 30 - NO B.B.

F.F. - 30 - W.S.B. STARTED @ 15 MIN. AFTER FLUSHING TOOL NO BUILD

F.S.I. - 30 - NO B.B.



PRESSURE SUMMARY

Time (Min.)	Pressure (psig)	Temp (deg F)	Annotation

Recovery

Length (ft)	Description	Volume (bbl)
25.00	MUD 100% (FEW OIL SPECS IN TOOL)	0.35

Gas Rates

Choke (inches)	Pressure (psig)	Gas Rate (Mcf/d)

* Recovery from multiple tests

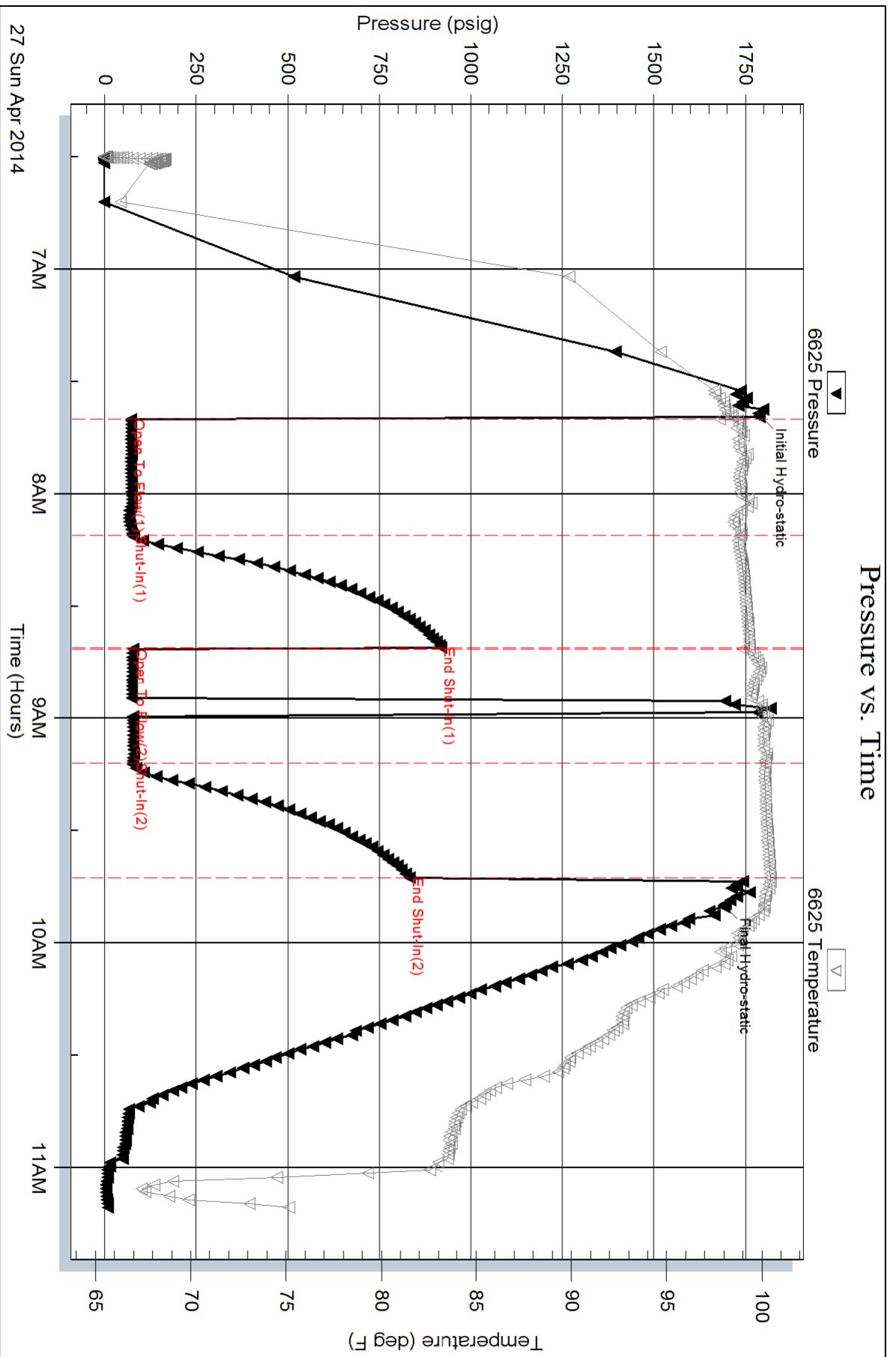
Serial #: 6625

Inside

Mkol oil L.L.C

Russell # 2-23

DST Test Number: 2



Serial #: 8319

Outside

Mkol oil L.L.C

Russell # 2-23

DST Test Number: 2

