



TRILOBITE TESTING, INC.

DRILL STEM TEST REPORT

Vincent Oil Corporation

5-23s-29w-Finney Co, KS

155 N. Market Ste. #700
Wichita, KS 67202

Doll #1-5

Job Ticket: 55720

DST#: 4

ATTN: Jim Hall

Test Start: 2014.02.28 @ 13:20:00

GENERAL INFORMATION:

Formation: **Pawnee**

Deviated: No Whipstock: ft (KB)

Time Tool Opened: 15:34:45

Time Test Ended: 21:49:00

Test Type: Conventional Straddle (Reset)

Tester: Cornelio Landa III

Unit No: 75

Interval: 4445.00 ft (KB) To 4490.00 ft (KB) (TVD)

Total Depth: 4709.00 ft (KB) (TVD)

Hole Diameter: 7.88 inches Hole Condition: Fair

Reference Elevations: 2672.00 ft (KB)

2661.00 ft (CF)

KB to GR/CF: 11.00 ft

Serial #: 8675

Inside

Press @ Run Depth: 156.57 psig @ 4446.00 ft (KB)

Start Date: 2014.02.28

End Date: 2014.02.28

Start Time: 13:20:15

End Time: 21:49:00

Capacity: 8000.00 psig

Last Calib.: 2014.02.28

Time On Btm: 2014.02.28 @ 15:33:45

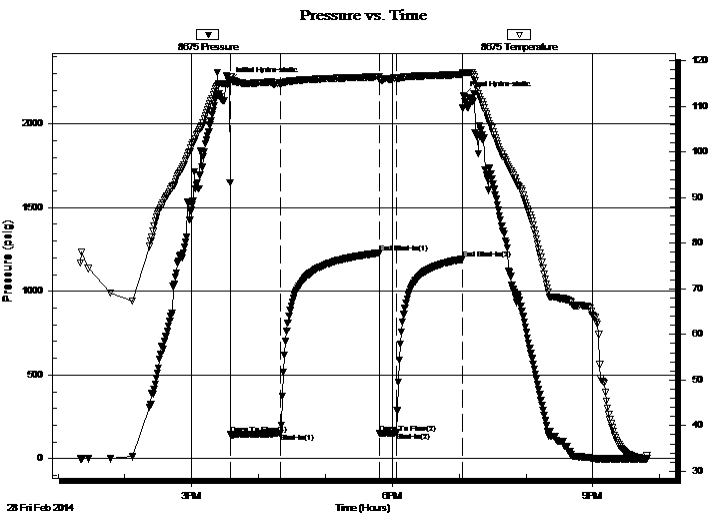
Time Off Btm: 2014.02.28 @ 19:03:45

TEST COMMENT: IF: B.o.b. in 55 seconds-Died back to 8 1/2 in. of blow

IS: Bled off in 1 1/2 min.-No return

FF: No blow

FS: No return



PRESSURE SUMMARY

Time (Min.)	Pressure (psig)	Temp (deg F)	Annotation
0	2250.41	115.05	Initial Hydro-static
1	144.16	116.40	Open To Flow (1)
46	151.18	115.10	Shut-In(1)
135	1229.07	116.50	End Shut-In(1)
135	151.05	115.75	Open To Flow (2)
150	156.57	116.08	Shut-In(2)
210	1192.08	116.96	End Shut-In(2)
210	2169.60	117.37	Final Hydro-static

Recovery

Length (ft)	Description	Volume (bbl)
260.00	Mud 100m	3.65

* Recovery from multiple tests

Gas Rates

Choke (inches)	Pressure (psig)	Gas Rate (Mcf/d)



TRILOBITE
TESTING, INC.

DRILL STEM TEST REPORT

Vincent Oil Corporation
155 N. Market Ste. #700
Wichita, KS 67202
ATTN: Jim Hall

5-23s-29w-Finney Co, KS

Doll #1-5

Job Ticket: 55720

DST#: 4

Test Start: 2014.02.28 @ 13:20:00

GENERAL INFORMATION:

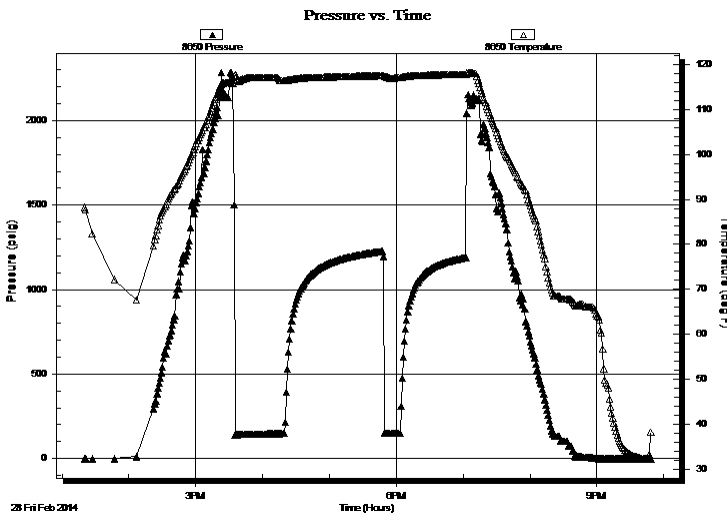
Formation: **Pawnee**
 Deviated: No Whipstock: ft (KB)
 Test Type: Conventional Straddle (Reset)
 Time Tool Opened: 15:34:45
 Tester: Cornelio Landa III
 Time Test Ended: 21:49:00
 Unit No: 75
Interval: 4445.00 ft (KB) To 4490.00 ft (KB) (TVD)
 Reference Elevations: 2672.00 ft (KB)
 Total Depth: 4709.00 ft (KB) (TVD)
 2661.00 ft (CF)
 Hole Diameter: 7.88 inches Hole Condition: Fair
 KB to GR/CF: 11.00 ft

Serial #: **8650** Outside

Press @ Run Depth: psig @ 4446.00 ft (KB) Capacity: 8000.00 psig
 Start Date: 2014.02.28 End Date: 2014.02.28 Last Calib.: 2014.02.28
 Start Time: 13:20:15 End Time: 21:48:45 Time On Btm:
 Time Off Btm:

TEST COMMENT: IF: B.o.b. in 55 seconds-Died back to 8 1/2 in. of blow
 IS: Bled off in 1 1/2 min.-No return
 FF: No blow
 FS: No return

PRESSURE SUMMARY



Time (Min.)	Pressure (psig)	Temp (deg F)	Annotation

Recovery

Length (ft)	Description	Volume (bbl)
260.00	Mud 100m	3.65

Gas Rates

Choke (inches)	Pressure (psig)	Gas Rate (Mcf/d)

* Recovery from multiple tests



**TRILOBITE
TESTING, INC.**

DRILL STEM TEST REPORT

Vincent Oil Corporation

5-23s-29w-Finney Co, KS

155 N. Market Ste. #700
Wichita, KS 67202

Doll #1-5

Job Ticket: 55720

DST#: 4

ATTN: Jim Hall

Test Start: 2014.02.28 @ 13:20:00

GENERAL INFORMATION:

Formation: **Pawnee**

Deviated: No Whipstock: ft (KB)

Time Tool Opened: 15:34:45

Time Test Ended: 21:49:00

Test Type: Conventional Straddle (Reset)

Tester: Cornelio Landa III

Unit No: 75

Interval: 4445.00 ft (KB) To 4490.00 ft (KB) (TVD)

Total Depth: 4709.00 ft (KB) (TVD)

Hole Diameter: 7.88 inches Hole Condition: Fair

Reference Elevations: 2672.00 ft (KB)

2661.00 ft (CF)

KB to GR/CF: 11.00 ft

Serial #: 6672 Below (Straddle)

Press @ Run Depth: psig @ 4688.00 ft (KB)

Start Date: 2014.02.28

End Date: 2014.02.28

Start Time: 13:20:01

End Time: 21:50:15

Capacity: 8000.00 psig

Last Calib.: 2014.02.28

Time On Btm:

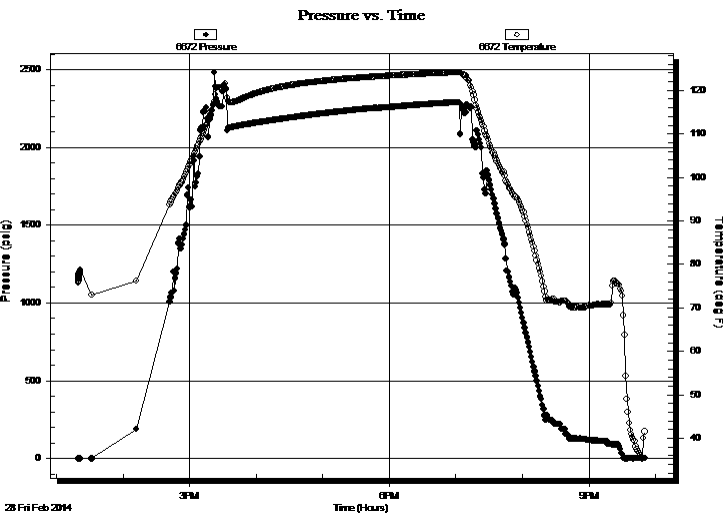
Time Off Btm:

TEST COMMENT: IF: B.o.b. in 55 seconds-Died back to 8 1/2 in. of blow

IS: Bled off in 1 1/2 min.-No return

FF: No blow

FS: No return



PRESSURE SUMMARY

Time (Min.)	Pressure (psig)	Temp (deg F)	Annotation

Recovery

Length (ft)	Description	Volume (bbl)
260.00	Mud 100m	3.65

Gas Rates

Choke (inches)	Pressure (psig)	Gas Rate (Mcf/d)

* Recovery from multiple tests



**TRILOBITE
TESTING, INC.**

DRILL STEM TEST REPORT

FLUID SUMMARY

Vincent Oil Corporation

5-23s-29w-Finney Co, KS

155 N. Market Ste. #700
Wichita, KS 67202

Doll #1-5

Job Ticket: 55720

DST#: 4

ATTN: Jim Hall

Test Start: 2014.02.28 @ 13:20:00

Mud and Cushion Information

Mud Type: Gel Chem

Cushion Type:

Oil API:

deg API

Mud Weight: 9.00 lb/gal

Cushion Length: ft

Water Salinity: ppm

Viscosity: 49.00 sec/qt

Cushion Volume: bbl

Water Loss: 8.39 in³

Gas Cushion Type:

Resistivity: 0.00 ohm.m

Gas Cushion Pressure: psig

Salinity: 1900.00 ppm

Filter Cake: 1.00 inches

Recovery Information

Recovery Table

Length ft	Description	Volume bbl
260.00	Mud 100m	3.647

Total Length: 260.00 ft Total Volume: 3.647 bbl

Num Fluid Samples: 0

Num Gas Bombs: 0

Serial #:

Laboratory Name:

Laboratory Location:

Recovery Comments:

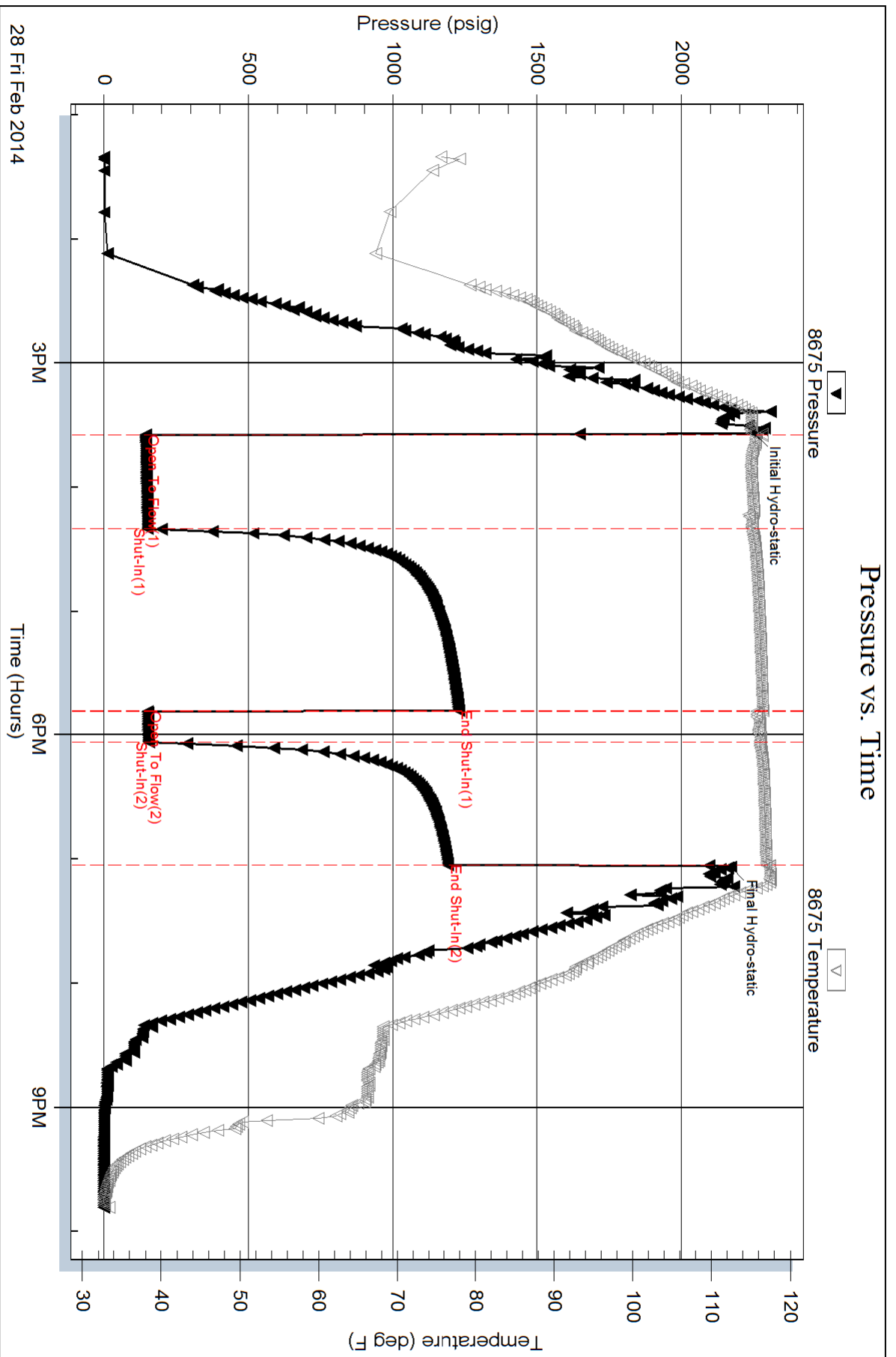
Serial #: 8675

Inside

Vincent Oil Corporation

Doll #1-5

DST Test Number: 4



Serial #: 8650

Outside Vincent Oil Corporation

Doll #1-5

DST Test Number: 4

