



**TRILOBITE TESTING, INC.**

# DRILL STEM TEST REPORT

Samuel Gary Jr. and Associates, Inc.

**10-5s-23w-Norton Co**

1515 Wynkoop St. Ste 700  
Denver, CO 80202

**Clydesdale #1-10**

Job Ticket: 56122

**DST#: 2**

ATTN: Clayton Camozzi

Test Start: 2014.03.08 @ 23:15:10

## GENERAL INFORMATION:

Formation: **LKC "D"**

Deviated: No Whipstock: ft (KB)

Time Tool Opened: 00:57:00

Time Test Ended: 08:35:20

Test Type: Conventional Straddle (Reset)

Tester: Tate Lang

Unit No: 49

**Interval: 3449.00 ft (KB) To 3465.00 ft (KB) (TVD)**

Reference Elevations: 2221.00 ft (KB)

Total Depth: 3483.00 ft (KB) (TVD)

2213.00 ft (CF)

Hole Diameter: 7.88 inches Hole Condition: Good

KB to GR/CF: 8.00 ft

**Serial #: 8898 Outside**

Press @ Run Depth: 267.40 psig @ 3450.00 ft (KB)

Capacity: 8000.00 psig

Start Date: 2014.03.08

End Date:

2014.03.09

Last Calib.:

2014.03.09

Start Time: 23:15:11

End Time:

08:35:20

Time On Btm:

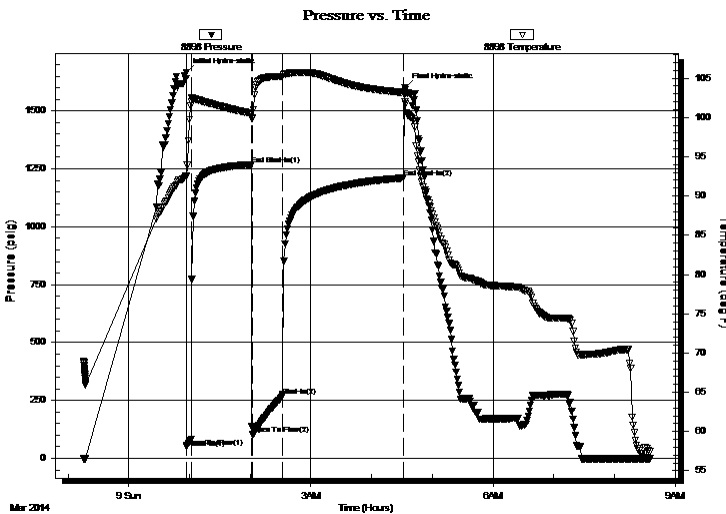
2014.03.09 @ 00:56:40

Time Off Btm:

2014.03.09 @ 04:33:00

**TEST COMMENT:** B.O.B. In 2 mins  
Weak surface blow back built to 1 1/2 in  
B.O.B. In 2 mins  
B.O.B. In 70 mins

## PRESSURE SUMMARY



Time (Min.)	Pressure (psig)	Temp (deg F)	Annotation
0	1666.01	92.60	Initial Hydro-static
1	49.78	92.46	Open To Flow (1)
5	83.22	102.03	Shut-In(1)
65	1268.88	100.52	End Shut-In(1)
66	104.37	99.83	Open To Flow (2)
96	267.40	105.23	Shut-In(2)
215	1210.89	103.17	End Shut-In(2)
217	1599.87	101.99	Final Hydro-static

## Recovery

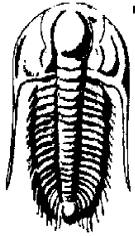
Length (ft)	Description	Volume (bbl)
60.00	25%G 25%O 50%M	0.30
120.00	40%G 30%O 30%M	1.14
600.00	20%G 80%O	8.42
0.00	600 GIP	0.00

\* Recovery from multiple tests

## Gas Rates

Choke (inches)	Pressure (psig)	Gas Rate (Mcf/d)





**TRILOBITE TESTING, INC.**

# DRILL STEM TEST REPORT

Samuel Gary Jr. and Associates, Inc.

**10-5s-23w-Norton Co**

1515 Wynkoop St. Ste 700  
Denver, CO 80202

**Clydesdale #1-10**

Job Ticket: 56122

**DST#: 2**

ATTN: Clayton Camozzi

Test Start: 2014.03.08 @ 23:15:10

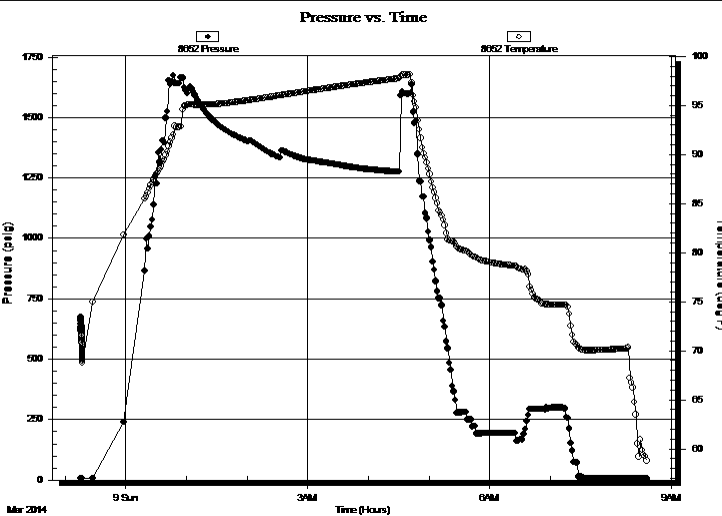
## GENERAL INFORMATION:

Formation: <b>LKC "D"</b>		
Deviated: No Whipstock: ft (KB)	Test Type: Conventional Straddle (Reset)	
Time Tool Opened: 00:57:00	Tester: Tate Lang	
Time Test Ended: 08:35:20	Unit No: 49	
<b>Interval: 3449.00 ft (KB) To 3465.00 ft (KB) (TVD)</b>	Reference Elevations: 2221.00 ft (KB)	
Total Depth: 3483.00 ft (KB) (TVD)	2213.00 ft (CF)	
Hole Diameter: 7.88 inches Hole Condition: Good	KB to GR/CF: 8.00 ft	

## Serial #: 8652 Below (Straddle)

Press @ Run Depth: psig @ 3485.00 ft (KB)	Capacity: 8000.00 psig
Start Date: 2014.03.08	End Date: 2014.03.09
Start Time: 23:15:22	End Time: 08:35:21
	Last Calib.: 2014.03.09
	Time On Btm:
	Time Off Btm:

TEST COMMENT: B.O.B. In 2 mins  
Weak surface blow back built to 1 1/2 in  
B.O.B. In 2 mins  
B.O.B. In 70 mins



## PRESSURE SUMMARY

Time (Min.)	Pressure (psig)	Temp (deg F)	Annotation

## Recovery

Length (ft)	Description	Volume (bbl)
60.00	25%G 25%O 50%M	0.30
120.00	40%G 30%O 30%M	1.14
600.00	20%G 80%O	8.42
0.00	600 GIP	0.00

## Gas Rates

	Choke (inches)	Pressure (psig)	Gas Rate (Mcf/d)

\* Recovery from multiple tests



**TRILOBITE  
TESTING, INC.**

# DRILL STEM TEST REPORT

**FLUID SUMMARY**

Samuel Gary Jr. and Associates, Inc.

**10-5s-23w-Norton Co**

1515 Wynkoop St. Ste 700  
Denver, CO 80202

**Clydesdale #1-10**

Job Ticket: 56122

**DST#: 2**

ATTN: Clayton Camozzi

Test Start: 2014.03.08 @ 23:15:10

## Mud and Cushion Information

Mud Type: Gel Chem

Cushion Type:

Oil API:

29 deg API

Mud Weight: 9.00 lb/gal

Cushion Length:

ft

Water Salinity:

ppm

Viscosity: 70.00 sec/qt

Cushion Volume:

bbbl

Water Loss: 5.80 in<sup>3</sup>

Gas Cushion Type:

Resistivity: ohm.m

Gas Cushion Pressure:

psig

Salinity: 1500.00 ppm

Filter Cake: 1.00 inches

## Recovery Information

Recovery Table

Length ft	Description	Volume bbbl
60.00	25%G 25%O 50%M	0.295
120.00	40%G 30%O 30%M	1.137
600.00	20%G 80%O	8.416
0.00	600 GIP	0.000

Total Length: 780.00 ft

Total Volume: 9.848 bbl

Num Fluid Samples: 0

Num Gas Bombs: 0

Serial #:

Laboratory Name:

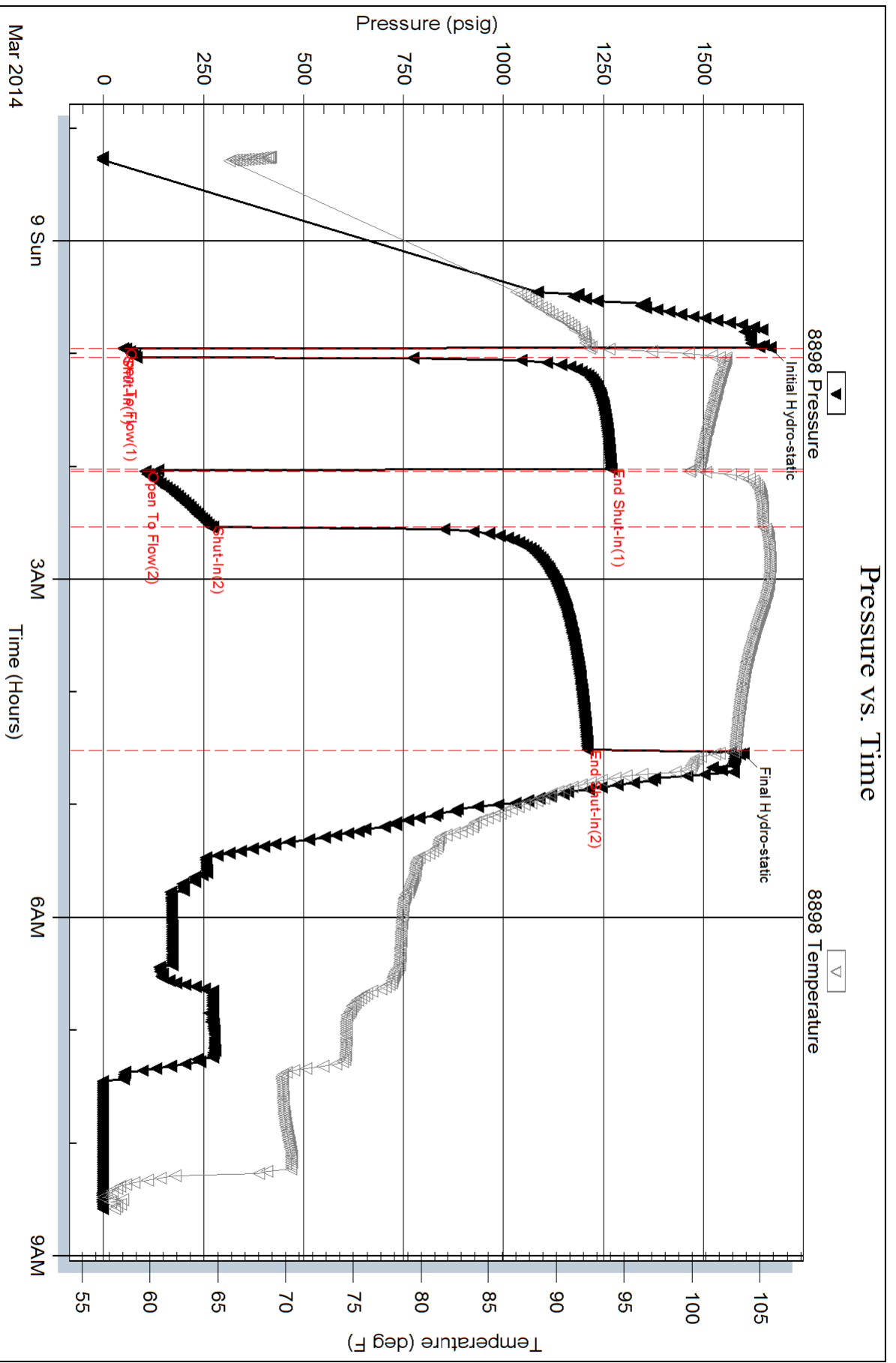
Laboratory Location:

Recovery Comments: Sampler

1500 ML Gas

1500 ML Oil

600 PSI



Serial #: 8897

Inside

Samuel Gary Jr. and Associates, Inc.

Clydesdale #1-10

DST Test Number: 2

