



**TRILOBITE TESTING, INC.**

# DRILL STEM TEST REPORT

Samuel Gary Jr. and Associates, Inc.

**10-5s-23w-Norton Co**

1515 Wynkoop St. Ste 700  
Denver, CO 80202

**Clydesdale #1-10**

Job Ticket: 56124

**DST#: 4**

ATTN: Clayton Camozzi

Test Start: 2014.03.10 @ 02:31:46

## GENERAL INFORMATION:

Formation: **LKC "F"**

Deviated: No Whipstock: ft (KB)

Time Tool Opened: 04:17:56

Time Test Ended: 09:47:25

Test Type: Conventional Bottom Hole (Reset)

Tester: Tate Lang

Unit No: 49

**Interval: 3498.00 ft (KB) To 3422.00 ft (KB) (TVD)**

Reference Elevations: 2221.00 ft (KB)

Total Depth: 3522.00 ft (KB) (TVD)

2213.00 ft (CF)

Hole Diameter: 7.88 inches Hole Condition: Good

KB to GR/CF: 8.00 ft

**Serial #: 8898 Outside**

Press@RunDepth: 30.86 psig @ 3499.00 ft (KB)

Capacity: 8000.00 psig

Start Date: 2014.03.10

End Date:

2014.03.10

Last Calib.:

2014.03.10

Start Time: 02:31:47

End Time:

09:47:26

Time On Btm:

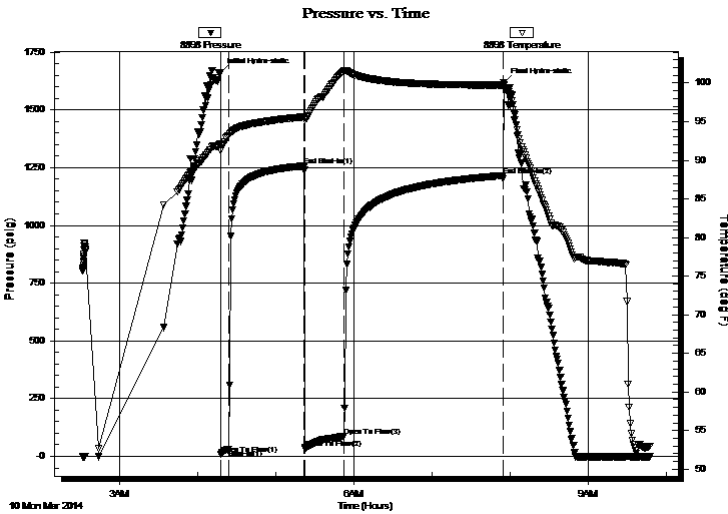
2014.03.10 @ 04:17:46

Time Off Btm:

2014.03.10 @ 07:54:55

**TEST COMMENT:** Weak surface blow built to 2 1/4 in  
Dead no blow back  
Strong blow built to 9 in  
Dead no blow back

## PRESSURE SUMMARY



Time (Min.)	Pressure (psig)	Temp (deg F)	Annotation
0	1660.78	92.12	Initial Hydro-static
1	10.30	91.25	Open To Flow (1)
6	30.86	93.19	Shut-In(1)
64	1257.61	95.61	End Shut-In(1)
65	35.29	95.20	Open To Flow (2)
95	87.64	101.50	Open To Flow (3)
217	1215.79	99.75	End Shut-In(2)
218	1617.45	99.73	Final Hydro-static

## Recovery

Length (ft)	Description	Volume (bbl)
120.00	90%W 10%M	0.59
50.00	40%W 60%M Skim of oil on top	0.70

## Gas Rates

	Choke (inches)	Pressure (psig)	Gas Rate (Mcf/d)

\* Recovery from multiple tests





**TRILOBITE  
TESTING, INC**

# DRILL STEM TEST REPORT

**FLUID SUMMARY**

Samuel Gary Jr. and Associates, Inc.

**10-5s-23w-Norton Co**

1515 Wynkoop St. Ste 700  
Denver, CO 80202

**Clydesdale #1-10**

Job Ticket: 56124

**DST#: 4**

ATTN: Clayton Camozzi

Test Start: 2014.03.10 @ 02:31:46

## Mud and Cushion Information

Mud Type: Gel Chem

Cushion Type:

Oil API:

deg API

Mud Weight: 9.00 lb/gal

Cushion Length:

ft

Water Salinity: 125000 ppm

Viscosity: 45.00 sec/qt

Cushion Volume:

bbbl

Water Loss: 6.40 in<sup>3</sup>

Gas Cushion Type:

Resistivity: ohm.m

Gas Cushion Pressure:

psig

Salinity: 1250.00 ppm

Filter Cake: 1.00 inches

## Recovery Information

Recovery Table

Length ft	Description	Volume bbl
120.00	90%W 10%M	0.590
50.00	40%W 60%M Skim of oil on top	0.701

Total Length: 170.00 ft      Total Volume: 1.291 bbl

Num Fluid Samples: 0

Num Gas Bombs: 0

Serial #:

Laboratory Name:

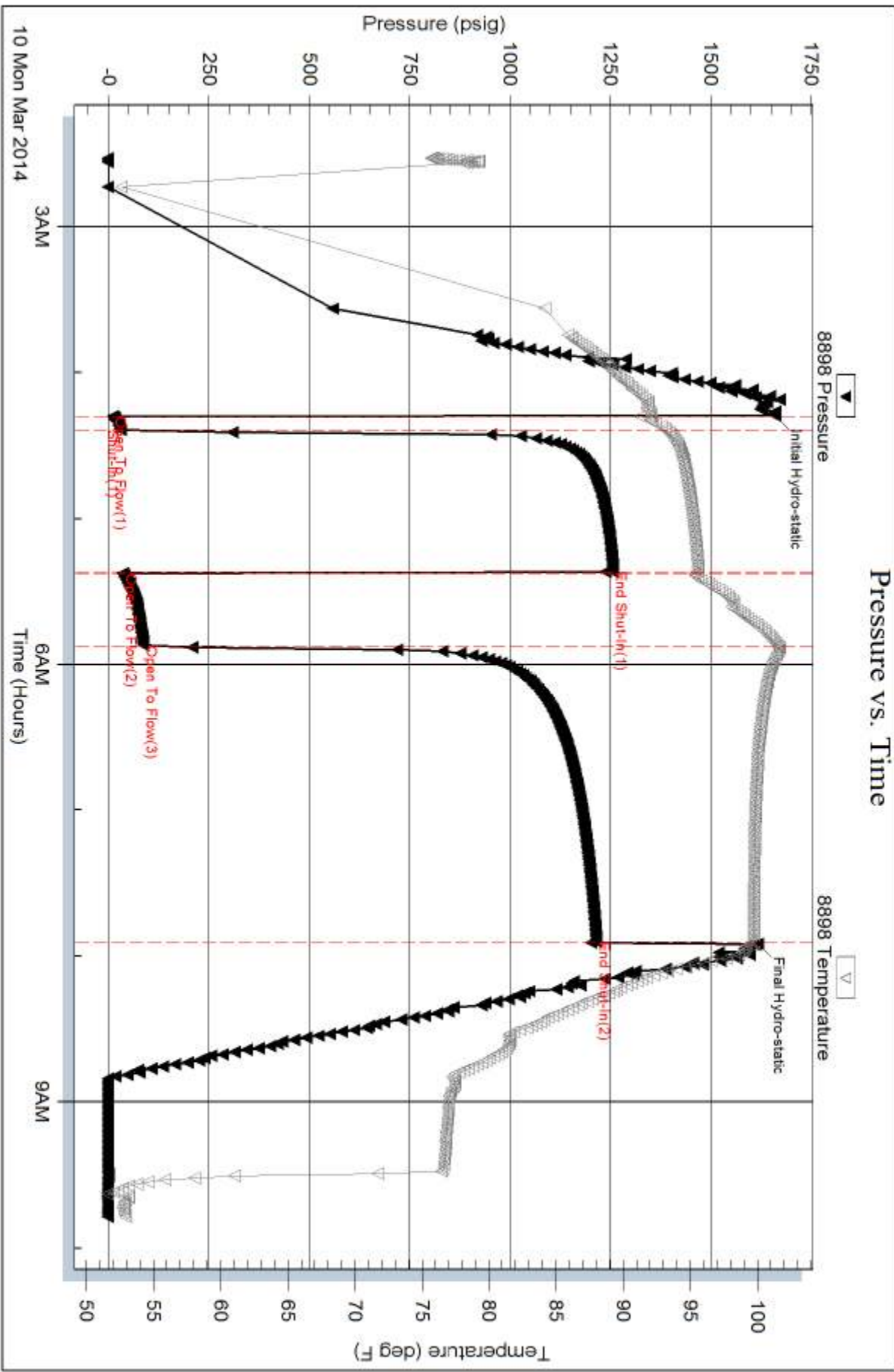
Laboratory Location:

Recovery Comments: Sampler

100 ML Oil

1900 ML Water

475 PISI



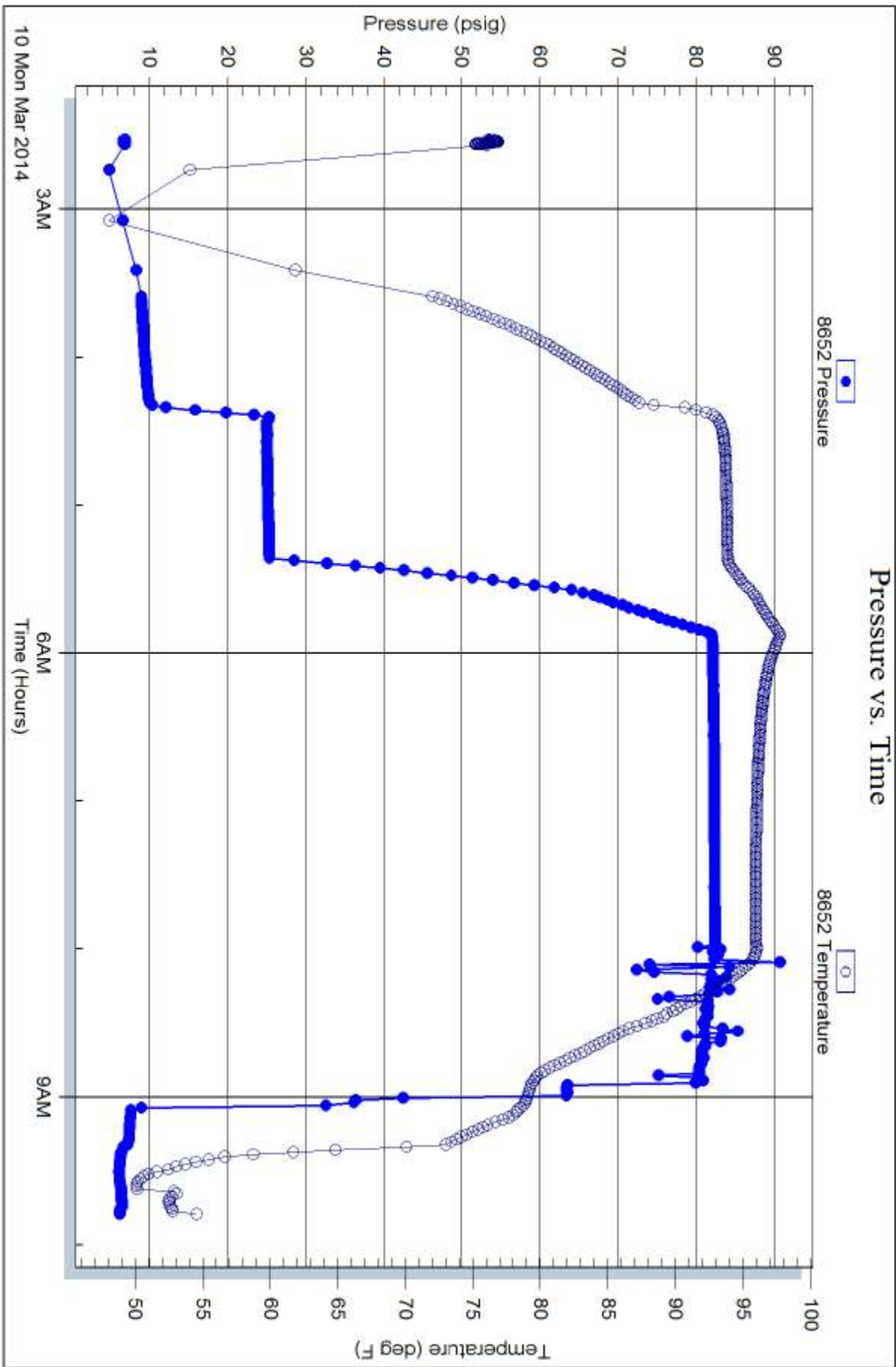
Serial #: 8652

Fluid

Samuel Gary Jr. and Associates, Inc.

Oydesdale #1-10

DST Test Number: 4



Trilobite Testing, Inc

Ref. No: 56124

Printed: 2014.03.10 @ 11:41:26