



DRILL STEM TEST REPORT

Prepared For: **Murfin Drilling Co., Inc.**

250 N. Water STE 300
Wichita, KS 67202

ATTN: Jeff Christian

Loker Trust #1-1

1-3s-36w Rawlins KS

Start Date: 2014.03.08 @ 14:00:00

End Date: 2014.03.08 @ 22:45:30

Job Ticket #: 53494 DST #: 1

Trilobite Testing, Inc
PO Box 362 Hays, KS 67601
ph: 785-625-4778 fax: 785-625-5620

Printed: 2014.03.16 @ 13:03:58



TRILOBITE TESTING, INC.

DRILL STEM TEST REPORT

Murfin Drilling Co., Inc.
 250 N. Water STE 300
 Wichita, KS 67202
 ATTN: Jeff Christian

1-3s-36w Rawlins KS
Loker Trust #1-1
 Job Ticket: 53494 **DST#: 1**
 Test Start: 2014.03.08 @ 14:00:00

GENERAL INFORMATION:

Formation: **LKC "A"**
 Deviated: No Whipstock: ft (KB)
 Test Type: Conventional Bottom Hole (Initial)
 Time Tool Opened: 16:27:00
 Tester: James Winder
 Time Test Ended: 22:45:30
 Unit No: 57
 Interval: **4130.00 ft (KB) To 4200.00 ft (KB) (TVD)**
 Reference Elevations: 3254.00 ft (KB)
 Total Depth: 4200.00 ft (KB) (TVD)
 3249.00 ft (CF)
 Hole Diameter: 7.88 inches
 Hole Condition: Fair
 KB to GR/CF: 5.00 ft

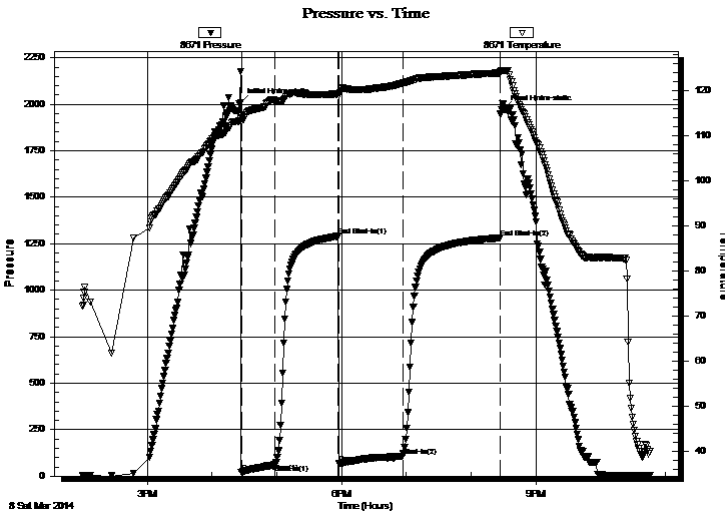
Serial #: 8671

Inside

Press@RunDepth: 107.03 psig @ 4131.00 ft (KB) Capacity: 8000.00 psig
 Start Date: 2014.03.08 End Date: 2014.03.08 Last Calib.: 2014.03.08
 Start Time: 14:00:05 End Time: 22:45:30 Time On Btm: 2014.03.08 @ 16:26:45
 Time Off Btm: 2014.03.08 @ 20:30:15

TEST COMMENT: 30 - IF: Blow built to 4"
 60 - IS: No blow back
 60 - FF: Blow built to 9 1/2"
 90 - FS: Blow back built to 1/8"

PRESSURE SUMMARY



Time (Min.)	Pressure (psig)	Temp (deg F)	Annotation
0	2008.63	114.40	Initial Hydro-static
1	20.41	113.68	Open To Flow (1)
32	61.57	117.62	Shut-In(1)
90	1289.71	119.16	End Shut-In(1)
91	67.10	118.88	Open To Flow (2)
150	107.03	121.54	Shut-In(2)
241	1281.55	123.81	End Shut-In(2)
244	1973.64	124.38	Final Hydro-static

Recovery

Length (ft)	Description	Volume (bbl)
62.00	GOCM 80% m, 12% g, 8% o	0.30
104.00	OCM 73% m, 21% o, 6% g	0.51
20.00	MO 55% o, 43% m, 2% g	0.10
25.00	CO 92% o, 7% g, 1% m	0.35
0.00	GIP = 40'	0.00

Gas Rates

	Choke (inches)	Pressure (psig)	Gas Rate (Mcf/d)



TRILOBITE TESTING, INC.

DRILL STEM TEST REPORT

Murfin Drilling Co., Inc.

1-3s-36w Rawlins KS

250 N. Water STE 300
Wichita, KS 67202

Loker Trust #1-1

Job Ticket: 53494

DST#: 1

ATTN: Jeff Christian

Test Start: 2014.03.08 @ 14:00:00

GENERAL INFORMATION:

Formation: **LKC "A"**

Deviated: No Whipstock: ft (KB)

Time Tool Opened: 16:27:00

Time Test Ended: 22:45:30

Test Type: Conventional Bottom Hole (Initial)

Tester: James Winder

Unit No: 57

Interval: 4130.00 ft (KB) To 4200.00 ft (KB) (TVD)

Total Depth: 4200.00 ft (KB) (TVD)

Hole Diameter: 7.88 inches Hole Condition: Fair

Reference Elevations: 3254.00 ft (KB)

3249.00 ft (CF)

KB to GR/CF: 5.00 ft

Serial #: 8320 Outside

Press@RunDepth: psig @ 4131.00 ft (KB)

Start Date: 2014.03.08

End Date:

Start Time: 14:00:05

End Time:

Capacity: 8000.00 psig

Last Calib.:

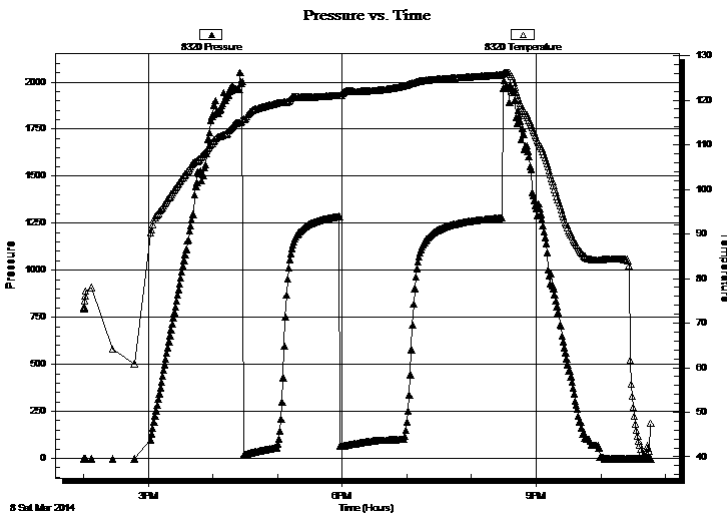
2014.03.08

Time On Btm:

Time Off Btm:

TEST COMMENT: 30 - IF: Blow built to 4"
60 - ISI: No blow back
60 - FF: Blow built to 9 1/2"
90 - FSI: Blow back built to 1/8"

PRESSURE SUMMARY



Time (Min.)	Pressure (psig)	Temp (deg F)	Annotation

Recovery

Length (ft)	Description	Volume (bbl)
62.00	GOCM 80% m, 12% g, 8% o	0.30
104.00	OCM 73% m, 21% o, 6% g	0.51
20.00	MO 55% o, 43% m, 2% g	0.10
25.00	CO 92% o, 7% g, 1% m	0.35
0.00	GIP = 40'	0.00

Gas Rates

Choke (inches)	Pressure (psig)	Gas Rate (Mcf/d)



**TRILOBITE
TESTING, INC**

DRILL STEM TEST REPORT

TOOL DIAGRAM

Murfin Drilling Co., Inc.

1-3s-36w Rawlins KS

250 N. Water STE 300
Wichita, KS 67202

Loker Trust #1-1

Job Ticket: 53494

DST#: 1

ATTN: Jeff Christian

Test Start: 2014.03.08 @ 14:00:00

Tool Information

Drill Pipe:	Length: 3946.00 ft	Diameter: 3.80 inches	Volume: 55.35 bbl	Tool Weight:	2500.00 lb
Heavy Wt. Pipe:	Length: 0.00 ft	Diameter: 0.00 inches	Volume: 0.00 bbl	Weight set on Packer:	2500.00 lb
Drill Collar:	Length: 186.00 ft	Diameter: 2.25 inches	Volume: 0.91 bbl	Weight to Pull Loose:	70000.00 lb
			<u>Total Volume: 56.26 bbl</u>	Tool Chased	0.00 ft
Drill Pipe Above KB:	30.00 ft			String Weight: Initial	64000.00 lb
Depth to Top Packer:	4130.00 ft			Final	64000.00 lb
Depth to Bottom Packer:	ft				
Interval between Packers:	70.00 ft				
Tool Length:	98.00 ft				
Number of Packers:	2	Diameter: 6.75 inches			

Tool Comments: Tool slid 4' to bottom before open, No mud loss

Tool Description

Tool Description	Length (ft)	Serial No.	Position	Depth (ft)	Accum. Lengths
Shut In Tool	5.00			4107.00	
Hydraulic tool	5.00			4112.00	
Jars	5.00			4117.00	
Safety Joint	3.00			4120.00	
Packer	5.00			4125.00	28.00 Bottom Of Top Packer
Packer	5.00			4130.00	
Stubb	1.00			4131.00	
Recorder	0.00	8671	Inside	4131.00	
Recorder	0.00	8320	Outside	4131.00	
Perforations	29.00			4160.00	
Blank Spacing	34.00			4194.00	
Perforations	3.00			4197.00	
Bullnose	3.00			4200.00	70.00 Bottom Packers & Anchor

Total Tool Length: 98.00



**TRILOBITE
TESTING, INC**

DRILL STEM TEST REPORT

FLUID SUMMARY

Murfin Drilling Co., Inc.

1-3s-36w Rawlins KS

250 N. Water STE 300
Wichita, KS 67202

Loker Trust #1-1

Job Ticket: 53494

DST#: 1

ATTN: Jeff Christian

Test Start: 2014.03.08 @ 14:00:00

Mud and Cushion Information

Mud Type: Gel Chem

Cushion Type:

Oil API:

35.2 deg API

Mud Weight: 9.00 lb/gal

Cushion Length:

ft

Water Salinity:

ppm

Viscosity: 56.00 sec/qt

Cushion Volume:

bbbl

Water Loss: 7.55 in³

Gas Cushion Type:

Resistivity: ohm.m

Gas Cushion Pressure:

psig

Salinity: 400.00 ppm

Filter Cake: 2.00 inches

Recovery Information

Recovery Table

Length ft	Description	Volume bbbl
62.00	GOCM 80%m, 12%g, 8%o	0.305
104.00	OCM 73%m, 21%o, 6%g	0.511
20.00	MO 55%o, 43%m, 2%g	0.098
25.00	CO 92%o, 7%g, 1%m	0.351
0.00	GIP = 40'	0.000

Total Length: 211.00 ft Total Volume: 1.265 bbl

Num Fluid Samples: 0

Num Gas Bombs: 0

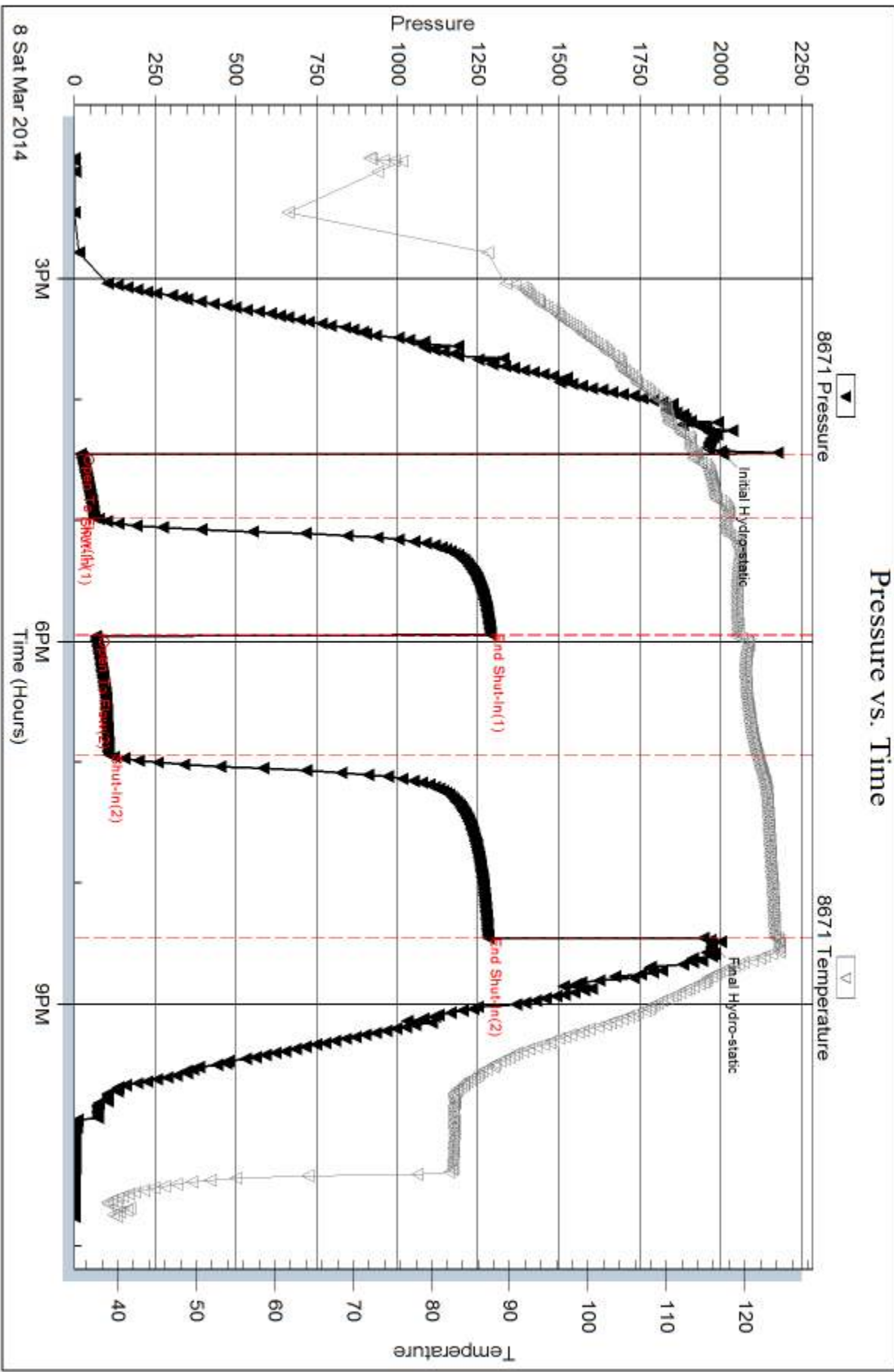
Serial #:

Laboratory Name:

Laboratory Location:

Recovery Comments: Gravity = 33.6 api @ 44 deg F

Corrected Gravity = 35.2 api

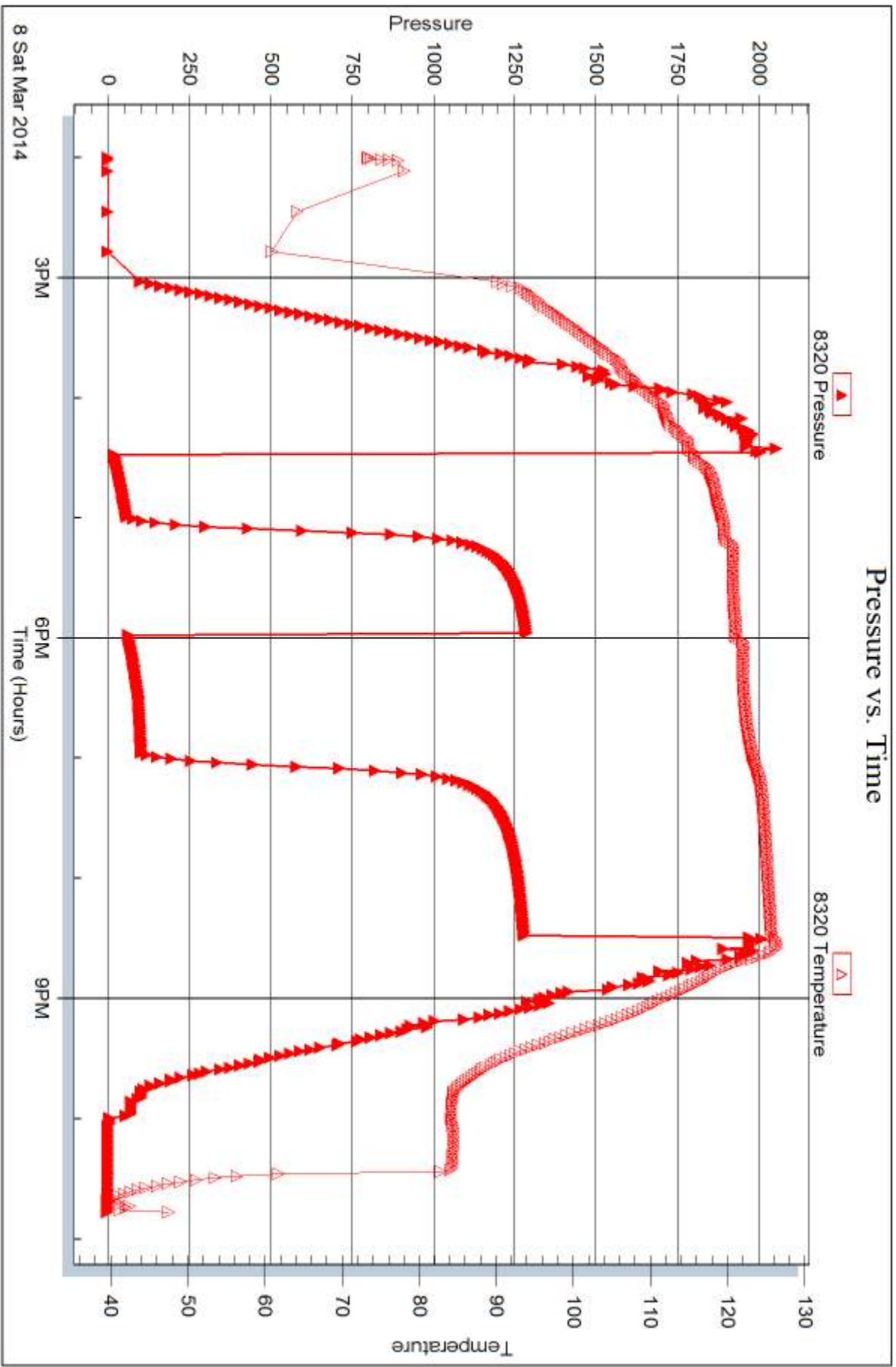


Serial #: 8320

Outside Murfin Drilling Co., Inc.

Loker Trust#1-1

DST Test Number: 1



Triobite Testing, Inc

Ref. No: 53494

Printed: 2014.03.16 @ 13:04:00



DRILL STEM TEST REPORT

Prepared For: **Murfin Drilling Co., Inc.**

250 N. Water STE 300
Wichita, KS 67202

ATTN: Jeff Christian

Loker Trust #1-1

1-3s-36w Rawlins KS

Start Date: 2014.03.09 @ 07:58:00

End Date: 2014.03.09 @ 15:36:30

Job Ticket #: 53495 DST #: 2

Trilobite Testing, Inc
PO Box 362 Hays, KS 67601
ph: 785-625-4778 fax: 785-625-5620

Printed: 2014.03.16 @ 13:03:34



TRILOBITE TESTING, INC.

DRILL STEM TEST REPORT

Murfin Drilling Co., Inc.
 250 N. Water STE 300
 Wichita, KS 67202
 ATTN: Jeff Christian

1-3s-36w Rawlins KS
Loker Trust #1-1
 Job Ticket: 53495 **DST#: 2**
 Test Start: 2014.03.09 @ 07:58:00

GENERAL INFORMATION:

Formation: **LKC "B - D"**
 Deviated: No Whipstock: ft (KB)
 Test Type: Conventional Bottom Hole (Reset)
 Time Tool Opened: 10:07:30 Tester: James Winder
 Time Test Ended: 15:36:30 Unit No: 57
 Interval: **4197.00 ft (KB) To 4248.00 ft (KB) (TVD)** Reference Elevations: 3254.00 ft (KB)
 Total Depth: 4248.00 ft (KB) (TVD) 3249.00 ft (CF)
 Hole Diameter: 7.88 inches Hole Condition: Fair KB to GR/CF: 5.00 ft

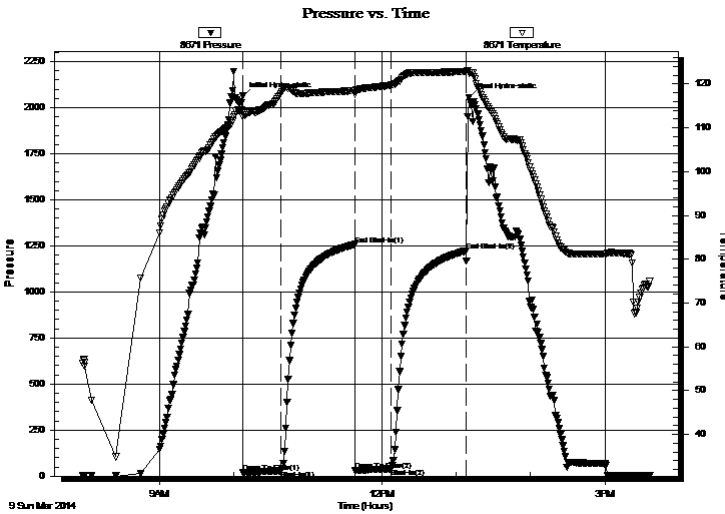
Serial #: 8671

Inside

Press@RunDepth: 39.85 psig @ 4198.00 ft (KB) Capacity: 8000.00 psig
 Start Date: 2014.03.09 End Date: 2014.03.09 Last Calib.: 2014.03.09
 Start Time: 07:58:05 End Time: 15:36:29 Time On Btm: 2014.03.09 @ 10:07:15
 Time Off Btm: 2014.03.09 @ 13:10:15

TEST COMMENT: 30 - IF: Blow built to just over 1"
 60 - IS: No blow back
 30 - FF: Intermittent blow at open, built to 1/2"
 60 - FS: No blow back

PRESSURE SUMMARY



Time (Min.)	Pressure (psig)	Temp (deg F)	Annotation
0	2062.00	113.72	Initial Hydro-static
1	19.49	112.59	Open To Flow (1)
32	29.26	117.90	Shut-In(1)
91	1257.13	118.52	End Shut-In(1)
91	30.83	117.66	Open To Flow (2)
120	39.85	119.75	Shut-In(2)
181	1223.82	122.84	End Shut-In(2)
183	2056.34	122.46	Final Hydro-static

Recovery

Length (ft)	Description	Volume (bbl)
45.00	Mud w /trace oil 100%m	0.22

* Recovery from multiple tests

Gas Rates

Choke (inches)	Pressure (psig)	Gas Rate (Mcf/d)



TRILOBITE TESTING, INC

DRILL STEM TEST REPORT

Murfin Drilling Co., Inc.

250 N. Water STE 300
Wichita, KS 67202

ATTN: Jeff Christian

1-3s-36w Rawlins KS

Loker Trust #1-1

Job Ticket: 53495

DST#: 2

Test Start: 2014.03.09 @ 07:58:00

GENERAL INFORMATION:

Formation: **LKC "B - D"**

Deviated: No Whipstock: ft (KB)

Time Tool Opened: 10:07:30

Time Test Ended: 15:36:30

Test Type: Conventional Bottom Hole (Reset)

Tester: James Winder

Unit No: 57

Interval: 4197.00 ft (KB) To 4248.00 ft (KB) (TVD)

Reference Elevations: 3254.00 ft (KB)

Total Depth: 4248.00 ft (KB) (TVD)

3249.00 ft (CF)

Hole Diameter: 7.88 inches Hole Condition: Fair

KB to GR/CF: 5.00 ft

Serial #: 8320 Outside

Press@RunDepth: psig @ 4198.00 ft (KB)

Capacity: 8000.00 psig

Start Date: 2014.03.09 End Date: 2014.03.09

Last Calib.: 2014.03.09

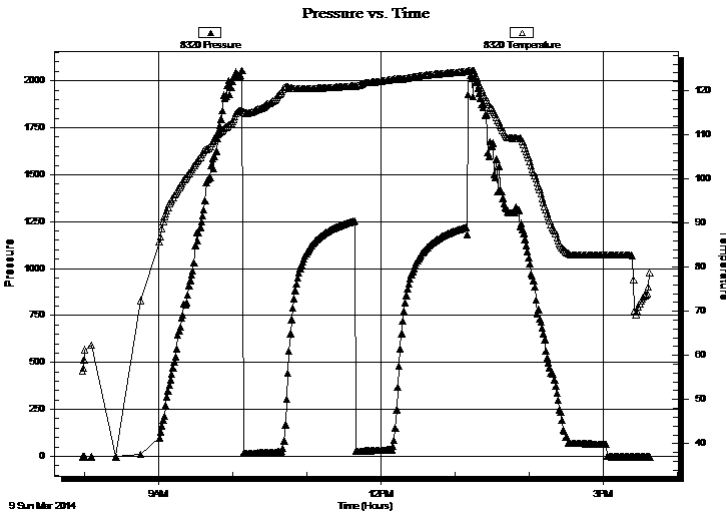
Start Time: 07:58:05 End Time: 15:37:14

Time On Btm:

Time Off Btm:

TEST COMMENT: 30 - IF: Blow built to just over 1"
60 - IS!: No blow back
30 - FF: Intermittent blow at open, built to 1/2"
60 - FS!: No blow back

PRESSURE SUMMARY



Time (Min.)	Pressure (psig)	Temp (deg F)	Annotation

Recovery

Length (ft)	Description	Volume (bbl)
45.00	Mud w /trace oil 100%m	0.22

Gas Rates

	Choke (inches)	Pressure (psig)	Gas Rate (Mcf/d)

* Recovery from multiple tests



**TRILOBITE
TESTING, INC**

DRILL STEM TEST REPORT

TOOL DIAGRAM

Murfin Drilling Co., Inc.

1-3s-36w Rawlins KS

250 N. Water STE 300
Wichita, KS 67202

Loker Trust #1-1

Job Ticket: 53495

DST#: 2

ATTN: Jeff Christian

Test Start: 2014.03.09 @ 07:58:00

Tool Information

Drill Pipe:	Length: 4006.00 ft	Diameter: 3.80 inches	Volume: 56.19 bbl	Tool Weight: 2500.00 lb
Heavy Wt. Pipe:	Length: 0.00 ft	Diameter: 0.00 inches	Volume: 0.00 bbl	Weight set on Packer: 25000.00 lb
Drill Collar:	Length: 186.00 ft	Diameter: 2.25 inches	Volume: 0.91 bbl	Weight to Pull Loose: 68000.00 lb
			<u>Total Volume: 57.10 bbl</u>	Tool Chased 0.00 ft
Drill Pipe Above KB:	23.00 ft			String Weight: Initial 64000.00 lb
Depth to Top Packer:	4197.00 ft			Final 64000.00 lb
Depth to Bottom Packer:	ft			
Interval between Packers:	51.00 ft			
Tool Length:	79.00 ft			
Number of Packers:	2	Diameter: 6.75 inches		

Tool Comments:

Tool Description

Tool Description	Length (ft)	Serial No.	Position	Depth (ft)	Accum. Lengths
Shut In Tool	5.00			4174.00	
Hydraulic tool	5.00			4179.00	
Jars	5.00			4184.00	
Safety Joint	3.00			4187.00	
Packer	5.00			4192.00	28.00 Bottom Of Top Packer
Packer	5.00			4197.00	
Stubb	1.00			4198.00	
Recorder	0.00	8671	Inside	4198.00	
Recorder	0.00	8320	Outside	4198.00	
Perforations	15.00			4213.00	
Blank Spacing	32.00			4245.00	
Bullnose	3.00			4248.00	51.00 Bottom Packers & Anchor

Total Tool Length: 79.00



**TRILOBITE
TESTING, INC**

DRILL STEM TEST REPORT

FLUID SUMMARY

Murfin Drilling Co., Inc.

1-3s-36w Rawlins KS

250 N. Water STE 300
Wichita, KS 67202

Loker Trust #1-1

Job Ticket: 53495

DST#: 2

ATTN: Jeff Christian

Test Start: 2014.03.09 @ 07:58:00

Mud and Cushion Information

Mud Type: Gel Chem

Cushion Type:

Oil API:

deg API

Mud Weight: 9.00 lb/gal

Cushion Length:

ft

Water Salinity:

ppm

Viscosity: 55.00 sec/qt

Cushion Volume:

bbbl

Water Loss: 7.17 in³

Gas Cushion Type:

Resistivity: ohm.m

Gas Cushion Pressure:

psig

Salinity: 700.00 ppm

Filter Cake: 2.00 inches

Recovery Information

Recovery Table

Length ft	Description	Volume bbl
45.00	Mud w /trace oil 100%m	0.221

Total Length: 45.00 ft Total Volume: 0.221 bbl

Num Fluid Samples: 0

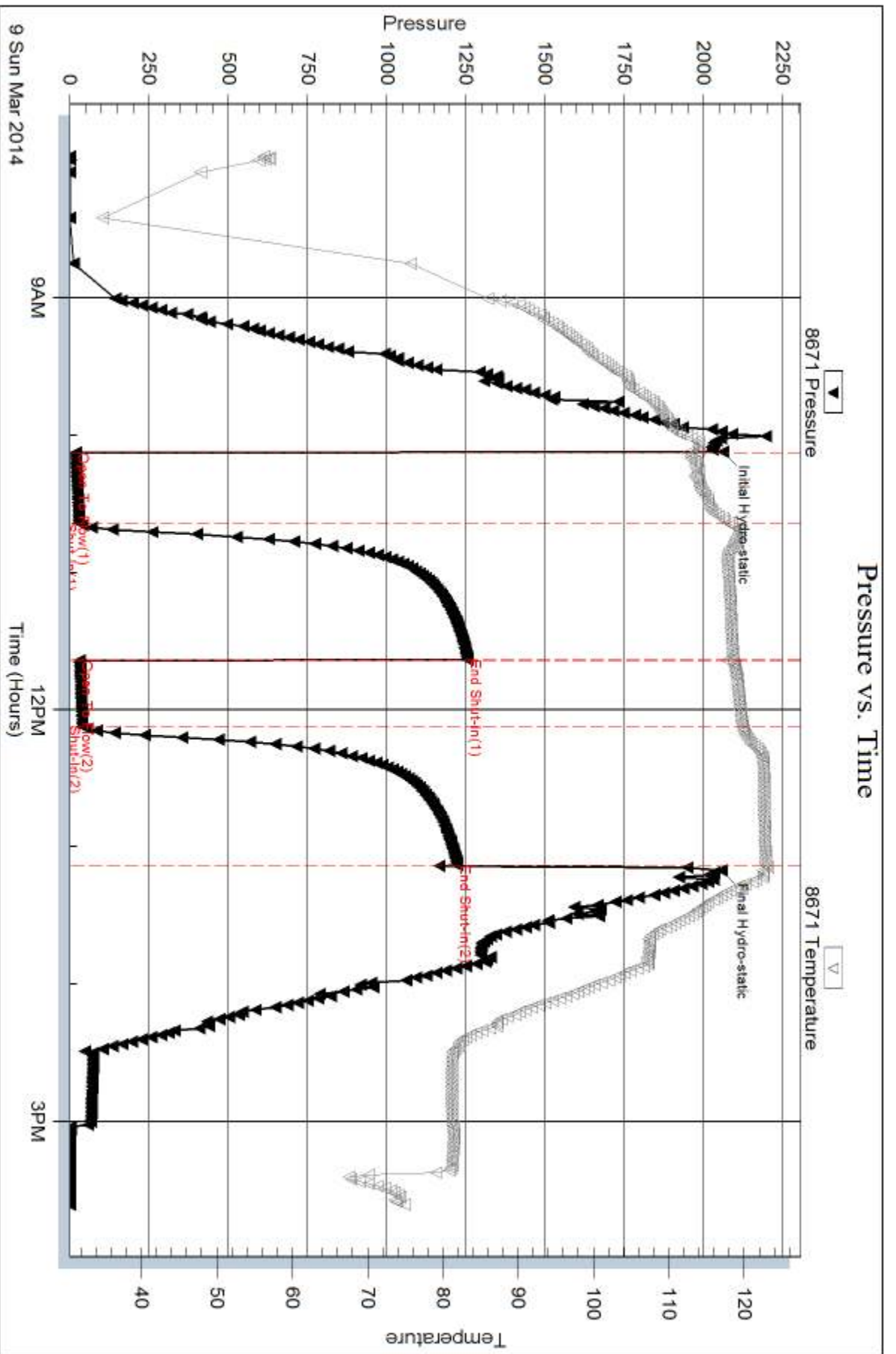
Num Gas Bombs: 0

Serial #:

Laboratory Name:

Laboratory Location:

Recovery Comments:

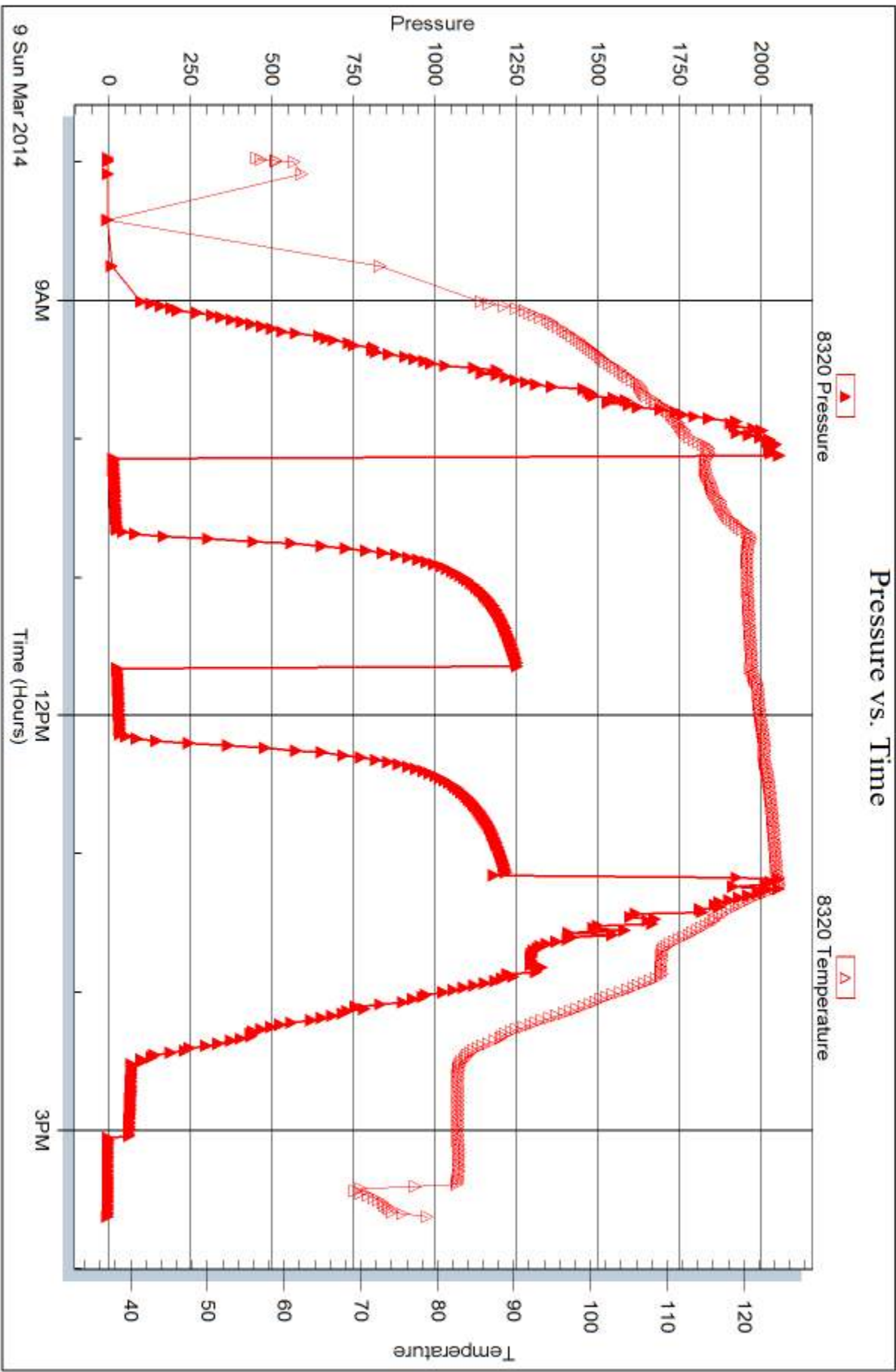


Serial #: 8320

Outside Murfin Drilling Co., Inc.

Loker Trust#1-1

DST Test Number: 2





DRILL STEM TEST REPORT

Prepared For: **Murfin Drilling Co., Inc.**

250 N. Water STE 300
Wichita, KS 67202

ATTN: Jeff Christian

Loker Trust #1-1

1-3s-36w Rawlins KS

Start Date: 2014.03.10 @ 00:33:00

End Date: 2014.03.10 @ 08:15:15

Job Ticket #: 53496 DST #: 3

Trilobite Testing, Inc

PO Box 362 Hays, KS 67601

ph: 785-625-4778 fax: 785-625-5620

Printed: 2014.03.16 @ 13:03:10



TRILOBITE TESTING, INC

DRILL STEM TEST REPORT

Murfin Drilling Co., Inc.
 250 N. Water STE 300
 Wichita, KS 67202
 ATTN: Jeff Christian

1-3s-36w Rawlins KS
Loker Trust #1-1
 Job Ticket: 53496 **DST#: 3**
 Test Start: 2014.03.10 @ 00:33:00

GENERAL INFORMATION:

Formation: **LKC "F - G"**
 Deviated: No Whipstock: ft (KB)
 Test Type: Conventional Bottom Hole (Reset)
 Time Tool Opened: 02:56:15 Tester: James Winder
 Time Test Ended: 08:15:15 Unit No: 57
 Interval: **4258.00 ft (KB) To 4296.00 ft (KB) (TVD)** Reference Elevations: 3254.00 ft (KB)
 Total Depth: 4296.00 ft (KB) (TVD) 3249.00 ft (CF)
 Hole Diameter: 7.88 inches Hole Condition: Fair KB to GR/CF: 5.00 ft

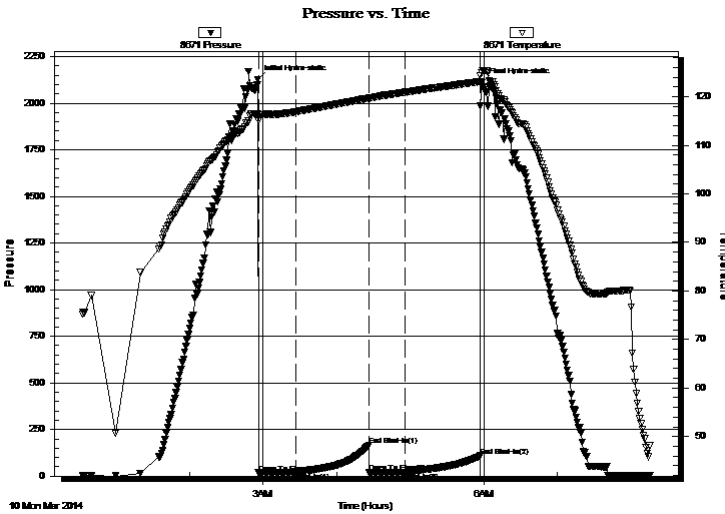
Serial #: 8671

Inside

Press@RunDepth: 21.69 psig @ 4259.00 ft (KB) Capacity: 8000.00 psig
 Start Date: 2014.03.10 End Date: 2014.03.10 Last Calib.: 2014.03.10
 Start Time: 00:33:05 End Time: 08:15:14 Time On Btm: 2014.03.10 @ 02:56:00
 Time Off Btm: 2014.03.10 @ 05:58:15

TEST COMMENT: 30 - IF: Blow built to 1/2"
 60 - ISI: No blow back
 30 - FF: No blow
 60 - FSI: No blow back

PRESSURE SUMMARY



Time (Min.)	Pressure (psig)	Temp (deg F)	Annotation
0	2125.15	116.46	Initial Hydro-static
1	17.49	115.04	Open To Flow (1)
31	19.95	116.90	Shut-In(1)
91	165.66	119.69	End Shut-In(1)
91	19.57	119.59	Open To Flow (2)
121	21.69	120.91	Shut-In(2)
181	108.68	123.08	End Shut-In(2)
183	2111.70	124.95	Final Hydro-static

Recovery

Length (ft)	Description	Volume (bbl)
2.00	OCM 78% m, 20% o, 2% g	0.01

* Recovery from multiple tests

Gas Rates

Choke (inches)	Pressure (psig)	Gas Rate (Mcf/d)



TRILOBITE TESTING, INC

DRILL STEM TEST REPORT

Murfin Drilling Co., Inc.
 250 N. Water STE 300
 Wichita, KS 67202
 ATTN: Jeff Christian

1-3s-36w Rawlins KS
Loker Trust #1-1
 Job Ticket: 53496 **DST#: 3**
 Test Start: 2014.03.10 @ 00:33:00

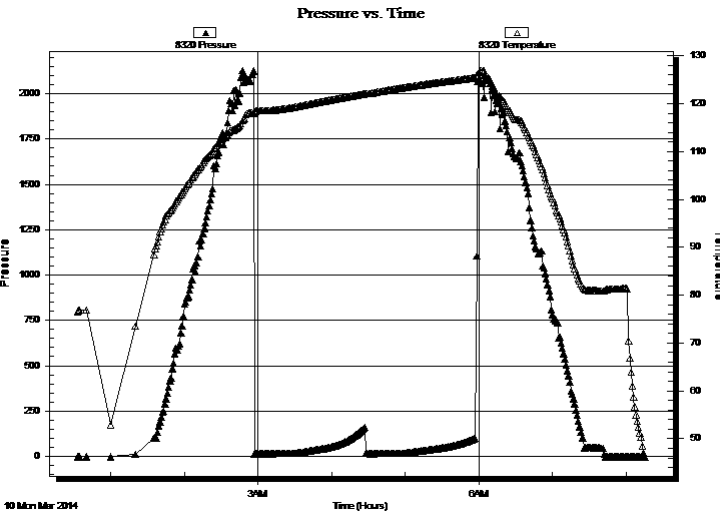
GENERAL INFORMATION:

Formation: **LKC "F - G"**
 Deviated: No Whipstock: ft (KB)
 Test Type: Conventional Bottom Hole (Reset)
 Time Tool Opened: 02:56:15 Tester: James Winder
 Time Test Ended: 08:15:15 Unit No: 57
 Interval: **4258.00 ft (KB) To 4296.00 ft (KB) (TVD)** Reference Elevations: 3254.00 ft (KB)
 Total Depth: 4296.00 ft (KB) (TVD) 3249.00 ft (CF)
 Hole Diameter: 7.88 inches Hole Condition: Fair KB to GR/CF: 5.00 ft

Serial #: 8320 Outside

Press@RunDepth: psig @ 4259.00 ft (KB) Capacity: 8000.00 psig
 Start Date: 2014.03.10 End Date: 2014.03.10 Last Calib.: 2014.03.10
 Start Time: 00:33:05 End Time: 08:15:59 Time On Btm:
 Time Off Btm:

TEST COMMENT: 30 - IF: Blow built to 1/2"
 60 - ISI: No blow back
 30 - FF: No blow
 60 - FSI: No blow back



PRESSURE SUMMARY

Time (Min.)	Pressure (psig)	Temp (deg F)	Annotation

Recovery

Length (ft)	Description	Volume (bbl)
2.00	OCM 78% m, 20% o, 2% g	0.01

* Recovery from multiple tests

Gas Rates

	Choke (inches)	Pressure (psig)	Gas Rate (Mcf/d)



**TRILOBITE
TESTING, INC**

DRILL STEM TEST REPORT

TOOL DIAGRAM

Murfin Drilling Co., Inc.

1-3s-36w Rawlins KS

250 N. Water STE 300
Wichita, KS 67202

Loker Trust #1-1

Job Ticket: 53496

DST#: 3

ATTN: Jeff Christian

Test Start: 2014.03.10 @ 00:33:00

Tool Information

Drill Pipe:	Length: 4069.00 ft	Diameter: 3.80 inches	Volume: 57.08 bbl	Tool Weight: 2500.00 lb
Heavy Wt. Pipe:	Length: 0.00 ft	Diameter: 0.00 inches	Volume: 0.00 bbl	Weight set on Packer: 25000.00 lb
Drill Collar:	Length: 186.00 ft	Diameter: 2.25 inches	Volume: 0.91 bbl	Weight to Pull Loose: 66000.00 lb
			<u>Total Volume: 57.99 bbl</u>	Tool Chased 0.00 ft
Drill Pipe Above KB:	25.00 ft			String Weight: Initial 64000.00 lb
Depth to Top Packer:	4258.00 ft			Final 64000.00 lb
Depth to Bottom Packer:	ft			
Interval between Packers:	38.00 ft			
Tool Length:	66.00 ft			
Number of Packers:	2	Diameter: 6.75 inches		

Tool Comments:

Tool Description	Length (ft)	Serial No.	Position	Depth (ft)	Accum. Lengths
------------------	-------------	------------	----------	------------	----------------

Shut In Tool	5.00			4235.00	
Hydraulic tool	5.00			4240.00	
Jars	5.00			4245.00	
Safety Joint	3.00			4248.00	
Packer	5.00			4253.00	28.00 Bottom Of Top Packer
Packer	5.00			4258.00	
Stubb	1.00			4259.00	
Recorder	0.00	8671	Inside	4259.00	
Recorder	0.00	8320	Outside	4259.00	
Perforations	34.00			4293.00	
Bullnose	3.00			4296.00	38.00 Bottom Packers & Anchor

Total Tool Length: 66.00



**TRILOBITE
TESTING, INC**

DRILL STEM TEST REPORT

FLUID SUMMARY

Murfin Drilling Co., Inc.

1-3s-36w Rawlins KS

250 N. Water STE 300
Wichita, KS 67202

Loker Trust #1-1

Job Ticket: 53496

DST#: 3

ATTN: Jeff Christian

Test Start: 2014.03.10 @ 00:33:00

Mud and Cushion Information

Mud Type: Gel Chem

Cushion Type:

Oil API:

deg API

Mud Weight: 9.00 lb/gal

Cushion Length:

ft

Water Salinity:

ppm

Viscosity: 55.00 sec/qt

Cushion Volume:

bbbl

Water Loss: 7.16 in³

Gas Cushion Type:

Resistivity: ohm.m

Gas Cushion Pressure:

psig

Salinity: 700.00 ppm

Filter Cake: 2.00 inches

Recovery Information

Recovery Table

Length ft	Description	Volume bbl
2.00	OCM 78% _m , 20% _o , 2% _g	0.010

Total Length: 2.00 ft Total Volume: 0.010 bbl

Num Fluid Samples: 0

Num Gas Bombs: 0

Serial #:

Laboratory Name:

Laboratory Location:

Recovery Comments:

Serial #: 8671

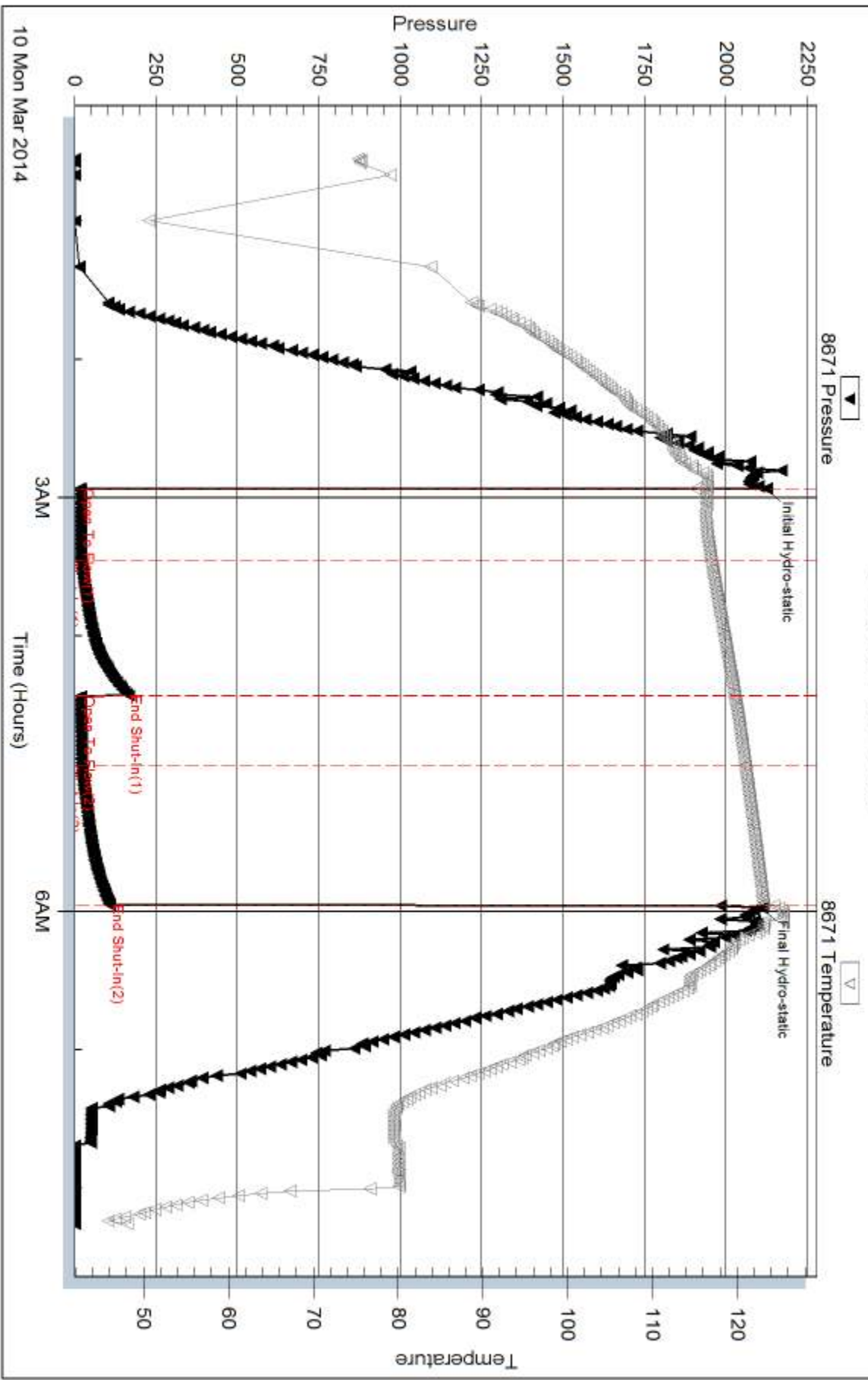
Inside

Murfin Drilling Co., Inc.

Loker Trust#1-1

DST Test Number: 3

Pressure vs. Time

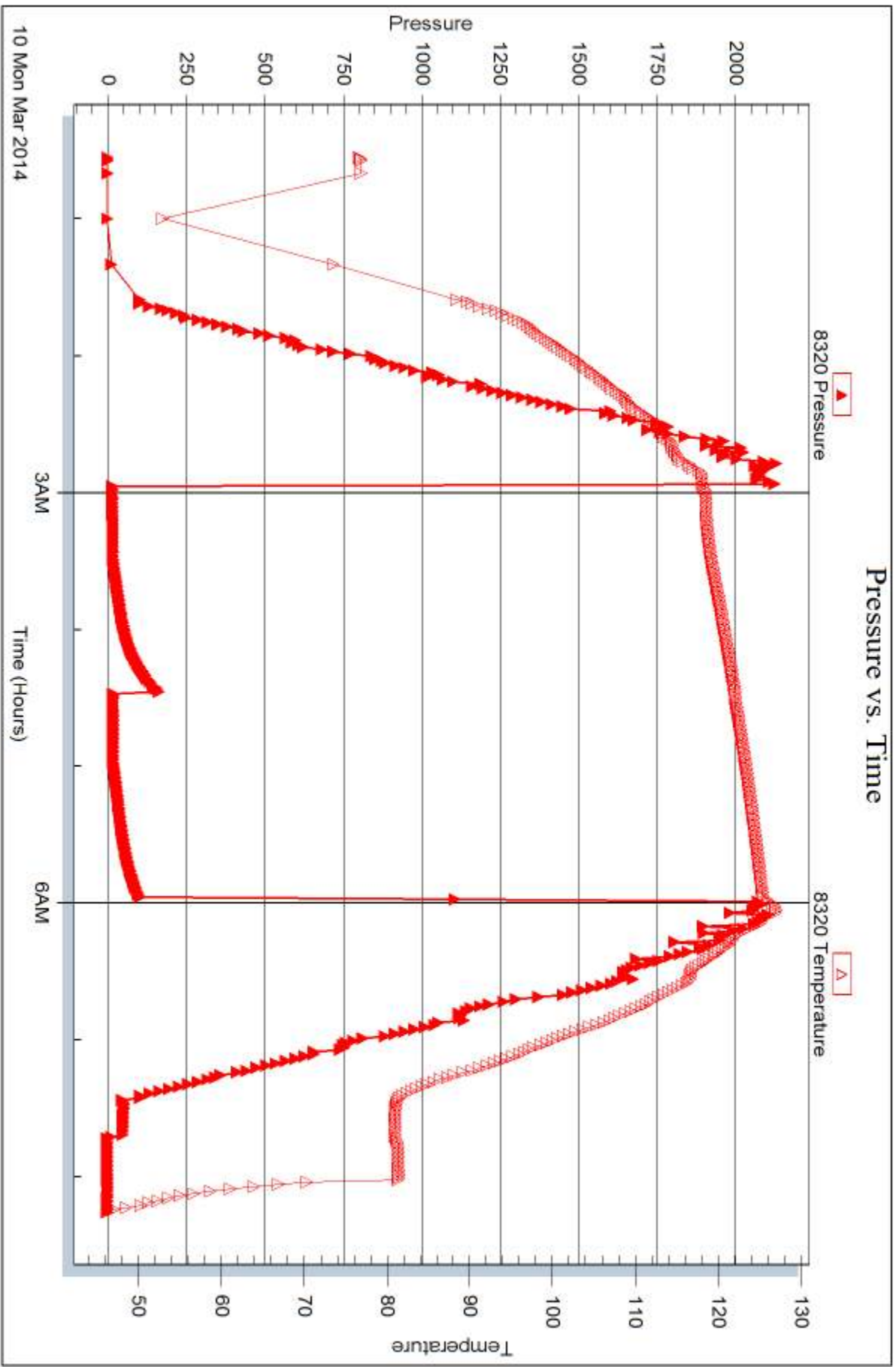


Serial #: 8320

Outside Murfin Drilling Co., Inc.

Loker Trust#1-1

DST Test Number: 3



Trilobite Testing, Inc

Ref. No: 53496

Printed: 2014.03.16 @ 13:03:13



DRILL STEM TEST REPORT

Prepared For: **Murfin Drilling Co., Inc.**

250 N. Water STE 300
Wichita, KS 67202

ATTN: Jeff Christian

Loker Trust #1-1

1-3s-36w Rawlins KS

Start Date: 2014.03.10 @ 22:04:00

End Date: 2014.03.11 @ 05:53:45

Job Ticket #: 53497 DST #: 4

Trilobite Testing, Inc
PO Box 362 Hays, KS 67601
ph: 785-625-4778 fax: 785-625-5620

Printed: 2014.03.16 @ 13:02:46



TRILOBITE TESTING, INC

DRILL STEM TEST REPORT

Murfin Drilling Co., Inc.
 250 N. Water STE 300
 Wichita, KS 67202
 ATTN: Jeff Christian

1-3s-36w Rawlins KS
Loker Trust #1-1
 Job Ticket: 53497 **DST#: 4**
 Test Start: 2014.03.10 @ 22:04:00

GENERAL INFORMATION:

Formation: **LKC "J - K"**
 Deviated: No Whipstock: ft (KB)
 Test Type: Conventional Bottom Hole (Reset)
 Time Tool Opened: 00:11:15 Tester: James Winder
 Time Test Ended: 05:53:45 Unit No: 57
 Interval: **4351.00 ft (KB) To 4430.00 ft (KB) (TVD)** Reference Elevations: 3254.00 ft (KB)
 Total Depth: 4430.00 ft (KB) (TVD) 3249.00 ft (CF)
 Hole Diameter: 7.88 inches Hole Condition: Fair KB to GR/CF: 5.00 ft

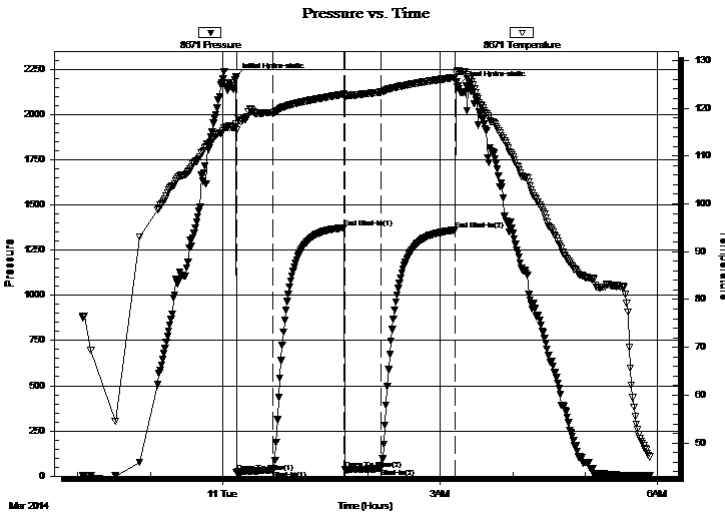
Serial #: 8671

Inside

Press@RunDepth: 42.44 psig @ 4352.00 ft (KB) Capacity: 8000.00 psig
 Start Date: 2014.03.10 End Date: 2014.03.11 Last Calib.: 2014.03.11
 Start Time: 22:04:05 End Time: 05:53:44 Time On Btm: 2014.03.11 @ 00:11:00
 Time Off Btm: 2014.03.11 @ 03:14:30

TEST COMMENT: 30 - IF: 1/4" Blow at open, built to 1 1/2"
 60 - IS: No blow back
 30 - FF: Blow built to just under 1/2"
 60 - FS: No blow back

PRESSURE SUMMARY



Time (Min.)	Pressure (psig)	Temp (deg F)	Annotation
0	2206.64	116.68	Initial Hydro-static
1	21.47	115.41	Open To Flow (1)
31	34.12	119.07	Shut-In(1)
90	1373.19	122.95	End Shut-In(1)
90	35.81	122.39	Open To Flow (2)
120	42.44	123.38	Shut-In(2)
182	1361.08	126.43	End Shut-In(2)
184	2160.67	127.90	Final Hydro-static

Recovery

Length (ft)	Description	Volume (bbl)
45.00	Mud w /Oil spots 98%m, 2%o	0.22

* Recovery from multiple tests

Gas Rates

Choke (inches)	Pressure (psig)	Gas Rate (Mcf/d)



TRILOBITE TESTING, INC.

DRILL STEM TEST REPORT

Murfin Drilling Co., Inc.

250 N. Water STE 300
Wichita, KS 67202

ATTN: Jeff Christian

1-3s-36w Rawlins KS

Loker Trust #1-1

Job Ticket: 53497 **DST#: 4**

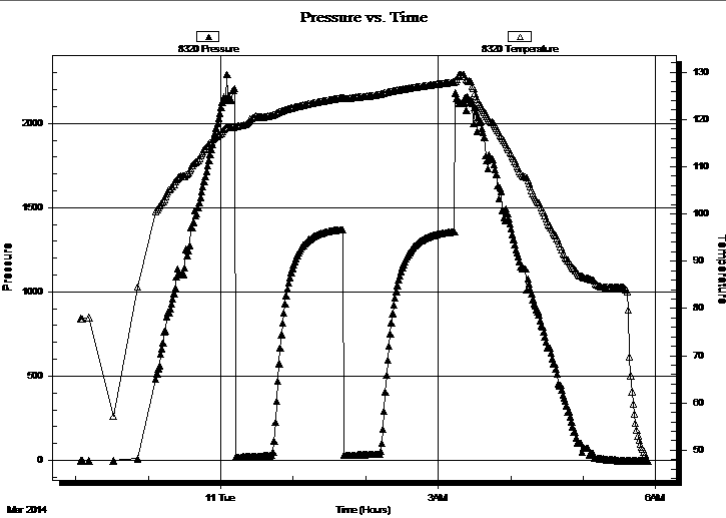
Test Start: 2014.03.10 @ 22:04:00

GENERAL INFORMATION:

Formation: **LKC "J - K"**
 Deviated: No Whipstock: ft (KB)
 Test Type: Conventional Bottom Hole (Reset)
 Time Tool Opened: 00:11:15
 Tester: James Winder
 Time Test Ended: 05:53:45
 Unit No: 57
 Interval: **4351.00 ft (KB) To 4430.00 ft (KB) (TVD)**
 Reference Elevations: 3254.00 ft (KB)
 Total Depth: 4430.00 ft (KB) (TVD)
 3249.00 ft (CF)
 Hole Diameter: 7.88 inches Hole Condition: Fair KB to GR/CF: 5.00 ft

Serial #: 8320 Outside
 Press@RunDepth: psig @ 4352.00 ft (KB) Capacity: 8000.00 psig
 Start Date: 2014.03.10 End Date: 2014.03.11 Last Calib.: 2014.03.11
 Start Time: 22:04:05 End Time: 05:53:59 Time On Btm:
 Time Off Btm:

TEST COMMENT: 30 - IF: 1/4" Blow at open, built to 1 1/2"
 60 - IS!: No blow back
 30 - FF: Blow built to just under 1/2"
 60 - FS!: No blow back



PRESSURE SUMMARY

Time (Min.)	Pressure (psig)	Temp (deg F)	Annotation

Recovery

Length (ft)	Description	Volume (bbl)
45.00	Mud w /Oil spots 98%m, 2%o	0.22

Gas Rates

Choke (inches)	Pressure (psig)	Gas Rate (Mcf/d)

* Recovery from multiple tests



**TRILOBITE
TESTING, INC.**

DRILL STEM TEST REPORT

TOOL DIAGRAM

Murfin Drilling Co., Inc.

1-3s-36w Rawlins KS

250 N. Water STE 300
Wichita, KS 67202

Loker Trust #1-1

Job Ticket: 53497

DST#: 4

ATTN: Jeff Christian

Test Start: 2014.03.10 @ 22:04:00

Tool Information

Drill Pipe:	Length: 4166.00 ft	Diameter: 3.80 inches	Volume: 58.44 bbl	Tool Weight: 2500.00 lb
Heavy Wt. Pipe:	Length: 0.00 ft	Diameter: 0.00 inches	Volume: 0.00 bbl	Weight set on Packer: 25000.00 lb
Drill Collar:	Length: 186.00 ft	Diameter: 2.25 inches	Volume: 0.91 bbl	Weight to Pull Loose: 65000.00 lb
			<u>Total Volume: 59.35 bbl</u>	Tool Chased 0.00 ft
Drill Pipe Above KB:	29.00 ft			String Weight: Initial 64000.00 lb
Depth to Top Packer:	4351.00 ft			Final 64000.00 lb
Depth to Bottom Packer:	ft			
Interval between Packers:	79.00 ft			
Tool Length:	107.00 ft			
Number of Packers:	2	Diameter: 6.75 inches		

Tool Comments:

Tool Description	Length (ft)	Serial No.	Position	Depth (ft)	Accum. Lengths
------------------	-------------	------------	----------	------------	----------------

Shut In Tool	5.00			4328.00	
Hydraulic tool	5.00			4333.00	
Jars	5.00			4338.00	
Safety Joint	3.00			4341.00	
Packer	5.00			4346.00	28.00 Bottom Of Top Packer
Packer	5.00			4351.00	
Stubb	1.00			4352.00	
Recorder	0.00	8671	Inside	4352.00	
Recorder	0.00	8320	Outside	4352.00	
Perforations	10.00			4362.00	
Blank Spacing	65.00			4427.00	
Bullnose	3.00			4430.00	79.00 Bottom Packers & Anchor

Total Tool Length: 107.00



**TRILOBITE
TESTING, INC**

DRILL STEM TEST REPORT

FLUID SUMMARY

Murfin Drilling Co., Inc.

1-3s-36w Rawlins KS

250 N. Water STE 300
Wichita, KS 67202

Loker Trust #1-1

Job Ticket: 53497

DST#: 4

ATTN: Jeff Christian

Test Start: 2014.03.10 @ 22:04:00

Mud and Cushion Information

Mud Type: Gel Chem

Cushion Type:

Oil API:

deg API

Mud Weight: 9.00 lb/gal

Cushion Length:

ft

Water Salinity:

ppm

Viscosity: 60.00 sec/qt

Cushion Volume:

bbbl

Water Loss: 6.98 in³

Gas Cushion Type:

Resistivity: ohm.m

Gas Cushion Pressure:

psig

Salinity: 500.00 ppm

Filter Cake: 2.00 inches

Recovery Information

Recovery Table

Length ft	Description	Volume bbl
45.00	Mud w /Oil spots 98% _m , 2% _o	0.221

Total Length: 45.00 ft Total Volume: 0.221 bbl

Num Fluid Samples: 0

Num Gas Bombs: 0

Serial #:

Laboratory Name:

Laboratory Location:

Recovery Comments:

Serial #: 8671

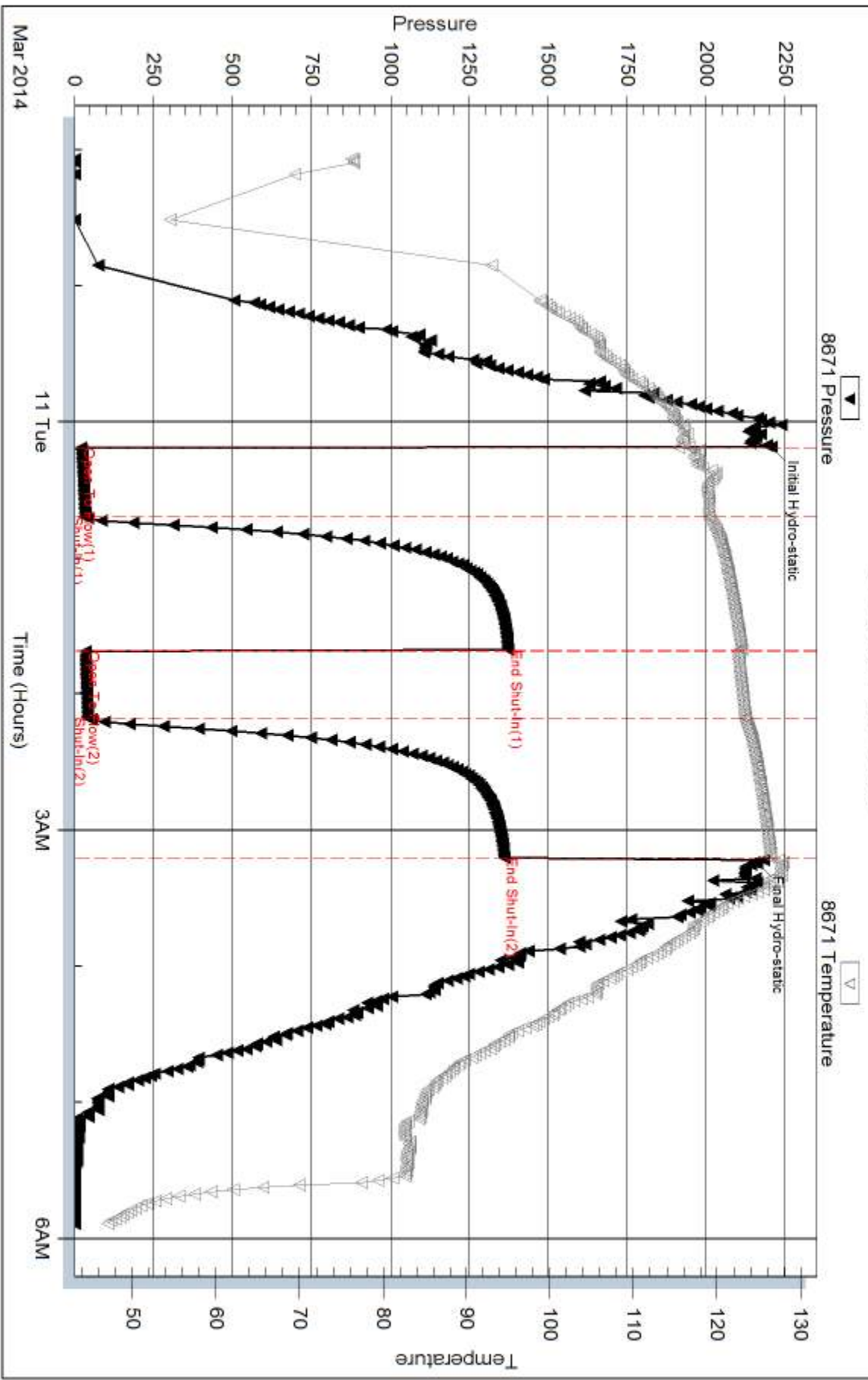
Inside

Murfin Drilling Co., Inc.

Loker Trust#1-1

DST Test Number: 4

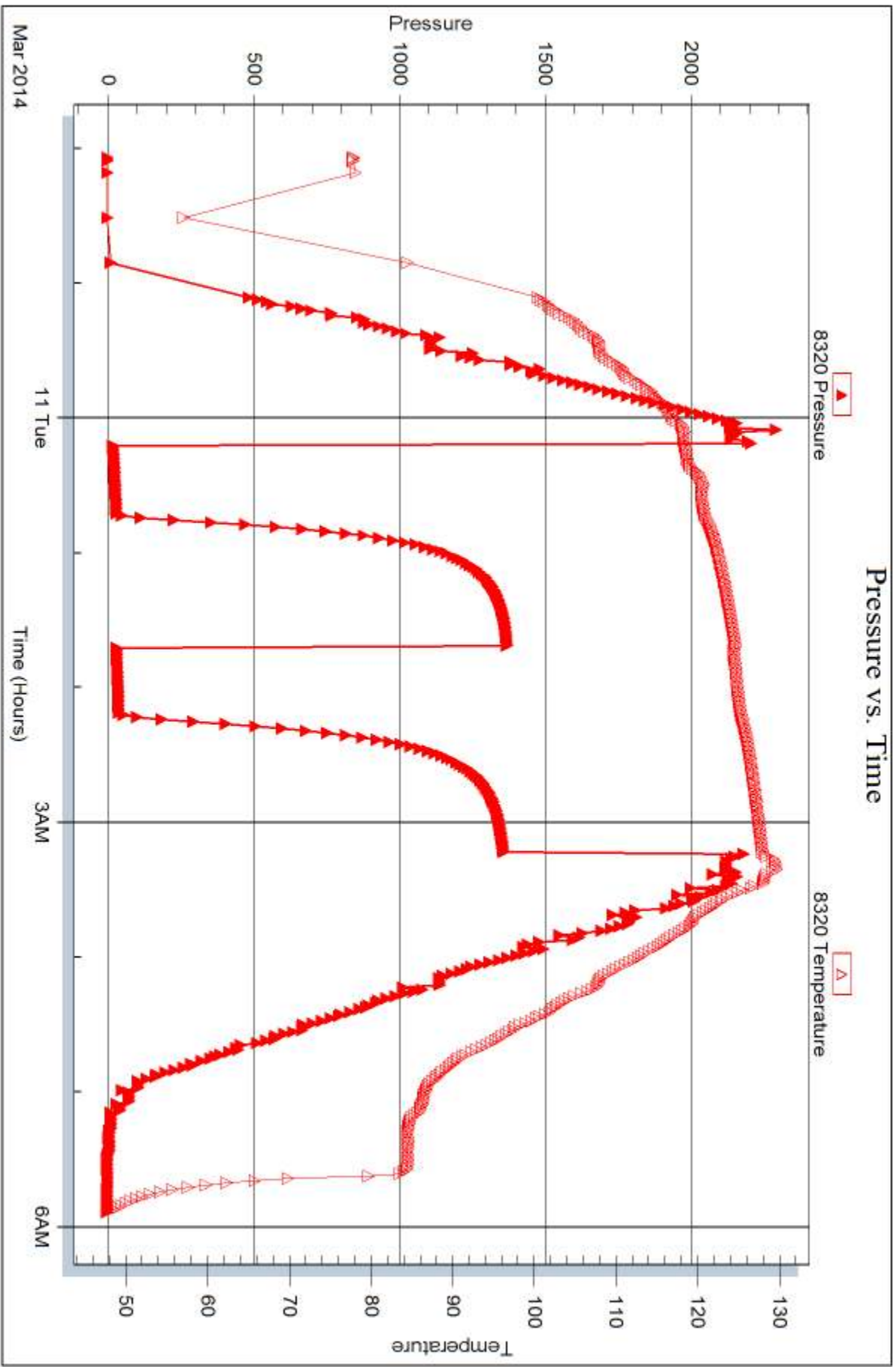
Pressure vs. Time



Triobite Testing, Inc

Ref. No: 53497

Printed: 2014.03.16 @ 13:02:48





DRILL STEM TEST REPORT

Prepared For: **Murfin Drilling Co., Inc.**

250 N. Water STE 300
Wichita, KS 67202

ATTN: Jeff Christian

Loker Trust #1-1

1-3s-36w Rawlins KS

Start Date: 2014.03.12 @ 09:10:00

End Date: 2014.03.12 @ 18:02:30

Job Ticket #: 53498 DST #: 5

Trilobite Testing, Inc
PO Box 362 Hays, KS 67601
ph: 785-625-4778 fax: 785-625-5620

Printed: 2014.03.16 @ 13:02:03



TRILOBITE TESTING, INC.

DRILL STEM TEST REPORT

Murfin Drilling Co., Inc.
 250 N. Water STE 300
 Wichita, KS 67202
 ATTN: Jeff Christian

1-3s-36w Rawlins KS
Loker Trust #1-1
 Job Ticket: 53498 **DST#: 5**
 Test Start: 2014.03.12 @ 09:10:00

GENERAL INFORMATION:

Formation: **Pawnee, Ft. Scott, C**
 Deviated: No Whipstock: ft (KB)
 Time Tool Opened: 11:17:15
 Time Test Ended: 18:02:30
 Interval: **4556.00 ft (KB) To 4686.00 ft (KB) (TVD)**
 Total Depth: 4686.00 ft (KB) (TVD)
 Hole Diameter: 7.88 inches Hole Condition: Fair
 Test Type: Conventional Bottom Hole (Reset)
 Tester: James Winder
 Unit No: 57
 Reference Elevations: 3254.00 ft (KB)
 3249.00 ft (CF)
 KB to GR/CF: 5.00 ft

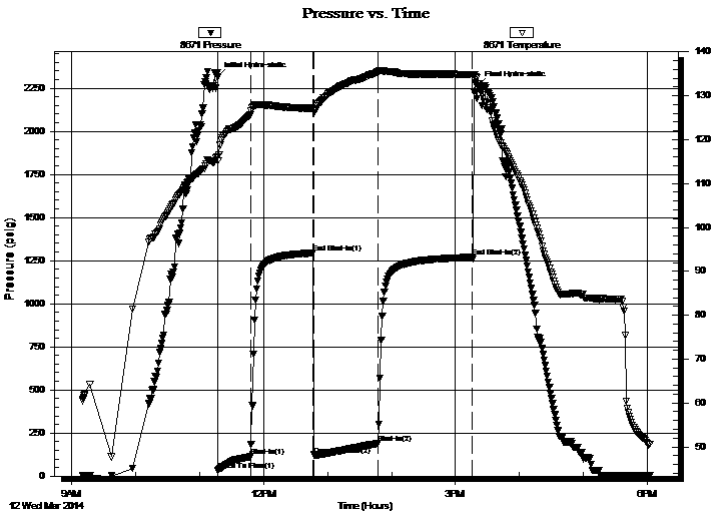
Serial #: 8671

Inside

Press@RunDepth: 190.04 psig @ 4557.00 ft (KB) Capacity: 8000.00 psig
 Start Date: 2014.03.12 End Date: 2014.03.12 Last Calib.: 2014.03.12
 Start Time: 09:10:05 End Time: 18:02:30 Time On Btm: 2014.03.12 @ 11:17:00
 Time Off Btm: 2014.03.12 @ 15:21:30

TEST COMMENT: 30 - IF: Blow built to BOB (11") at 22 1/2 min.
 60 - IS: Blow back built to 2"
 60 - FF: Blow built to BOB at 20 3/4 min.
 90 - FS: Blow back built to 6"

PRESSURE SUMMARY



Time (Min.)	Pressure (psig)	Temp (deg F)	Annotation
0	2314.89	116.05	Initial Hydro-static
1	31.47	115.20	Open To Flow (1)
31	112.59	125.66	Shut-In(1)
90	1294.28	127.12	End Shut-In(1)
90	122.91	126.59	Open To Flow (2)
151	190.04	135.49	Shut-In(2)
239	1270.00	134.76	End Shut-In(2)
245	2263.26	132.62	Final Hydro-static

Recovery

Length (ft)	Description	Volume (bbl)
190.00	GOCM 73% m, 14% g, 13% o	0.97
235.00	CGO 81% o, 17% g, 2% m	3.30
0.00	GIP = 265'	0.00

* Recovery from multiple tests

Gas Rates

	Choke (inches)	Pressure (psig)	Gas Rate (Mcf/d)



TRILOBITE TESTING, INC

DRILL STEM TEST REPORT

Murfin Drilling Co., Inc.
 250 N. Water STE 300
 Wichita, KS 67202
 ATTN: Jeff Christian

1-3s-36w Rawlins KS
Loker Trust #1-1
 Job Ticket: 53498 **DST#: 5**
 Test Start: 2014.03.12 @ 09:10:00

GENERAL INFORMATION:

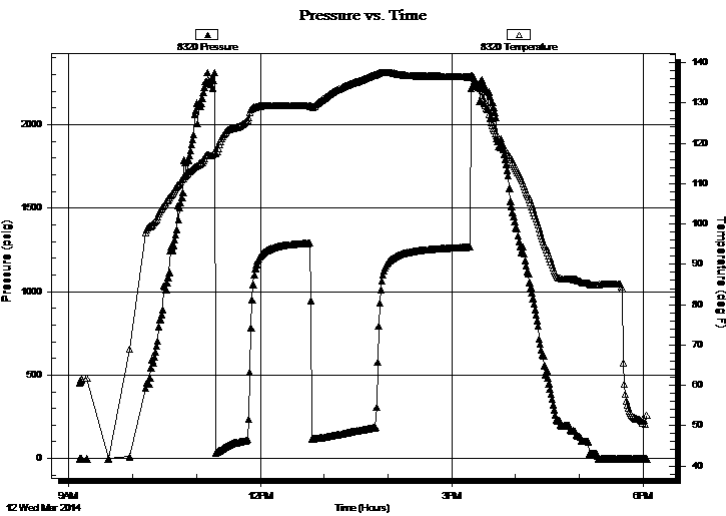
Formation: **Pawnee, Ft. Scott, C**
 Deviated: No Whipstock: ft (KB)
 Time Tool Opened: 11:17:15
 Time Test Ended: 18:02:30
 Interval: **4556.00 ft (KB) To 4686.00 ft (KB) (TVD)**
 Total Depth: 4686.00 ft (KB) (TVD)
 Hole Diameter: 7.88 inches Hole Condition: Fair
 Test Type: Conventional Bottom Hole (Reset)
 Tester: James Winder
 Unit No: 57
 Reference Elevations: 3254.00 ft (KB)
 3249.00 ft (CF)
 KB to GR/CF: 5.00 ft

Serial #: 8320

Outside

Press@RunDepth: psig @ 4557.00 ft (KB)
 Start Date: 2014.03.12 End Date: 2014.03.12
 Start Time: 09:10:05 End Time: 18:03:30
 Capacity: 8000.00 psig
 Last Calib.: 2014.03.12
 Time On Btm:
 Time Off Btm:

TEST COMMENT: 30 - IF: Blow built to BOB (11") at 22 1/2 min.
 60 - ISI: Blow back built to 2"
 60 - FF: Blow built to BOB at 20 3/4 min.
 90 - FSI: Blow back built to 6"



PRESSURE SUMMARY

Time (Min.)	Pressure (psig)	Temp (deg F)	Annotation

Recovery

Length (ft)	Description	Volume (bbl)
190.00	GOCM 73% _m , 14% _g , 13% _o	0.97
235.00	CGO 81% _o , 17% _g , 2% _m	3.30
0.00	GIP = 265'	0.00

Gas Rates

Choke (inches)	Pressure (psig)	Gas Rate (Mcf/d)

* Recovery from multiple tests



**TRILOBITE
TESTING, INC**

DRILL STEM TEST REPORT

TOOL DIAGRAM

Murfin Drilling Co., Inc.

1-3s-36w Rawlins KS

250 N. Water STE 300
Wichita, KS 67202

Loker Trust #1-1

Job Ticket: 53498

DST#: 5

ATTN: Jeff Christian

Test Start: 2014.03.12 @ 09:10:00

Tool Information

Drill Pipe:	Length: 4356.00 ft	Diameter: 3.80 inches	Volume: 61.10 bbl	Tool Weight: 2500.00 lb
Heavy Wt. Pipe:	Length: 0.00 ft	Diameter: 0.00 inches	Volume: 0.00 bbl	Weight set on Packer: 25000.00 lb
Drill Collar:	Length: 186.00 ft	Diameter: 2.25 inches	Volume: 0.91 bbl	Weight to Pull Loose: 88000.00 lb
			<u>Total Volume: 62.01 bbl</u>	Tool Chased 0.00 ft
Drill Pipe Above KB:	14.00 ft			String Weight: Initial 65000.00 lb
Depth to Top Packer:	4556.00 ft			Final 68000.00 lb
Depth to Bottom Packer:	ft			
Interval between Packers:	130.00 ft			
Tool Length:	158.00 ft			
Number of Packers:	2	Diameter: 6.75 inches		

Tool Comments:

Tool Description

Tool Description	Length (ft)	Serial No.	Position	Depth (ft)	Accum. Lengths
Shut In Tool	5.00			4533.00	
Hydraulic tool	5.00			4538.00	
Jars	5.00			4543.00	
Safety Joint	3.00			4546.00	
Packer	5.00			4551.00	28.00 Bottom Of Top Packer
Packer	5.00			4556.00	
Stubb	1.00			4557.00	
Recorder	0.00	8671	Inside	4557.00	
Recorder	0.00	8320	Outside	4557.00	
Perforations	25.00			4582.00	
Blank Spacing	97.00			4679.00	
Perforations	4.00			4683.00	
Bullnose	3.00			4686.00	130.00 Bottom Packers & Anchor

Total Tool Length: 158.00



**TRILOBITE
TESTING, INC**

DRILL STEM TEST REPORT

FLUID SUMMARY

Murfin Drilling Co., Inc.

1-3s-36w Rawlins KS

250 N. Water STE 300
Wichita, KS 67202

Loker Trust #1-1

Job Ticket: 53498

DST#: 5

ATTN: Jeff Christian

Test Start: 2014.03.12 @ 09:10:00

Mud and Cushion Information

Mud Type: Gel Chem
Mud Weight: 9.00 lb/gal
Viscosity: 60.00 sec/qt
Water Loss: 6.39 in³
Resistivity: ohm.m
Salinity: 700.00 ppm
Filter Cake: 2.00 inches

Cushion Type:
Cushion Length: ft
Cushion Volume: bbl
Gas Cushion Type:
Gas Cushion Pressure: psig

Oil API: 26 deg API
Water Salinity: ppm

Recovery Information

Recovery Table

Length ft	Description	Volume bbl
190.00	GOCM 73% <i>m</i> , 14% <i>g</i> , 13% <i>o</i>	0.971
235.00	CGO 81% <i>o</i> , 17% <i>g</i> , 2% <i>m</i>	3.296
0.00	GIP = 265'	0.000

Total Length: 425.00 ft Total Volume: 4.267 bbl

Num Fluid Samples: 0 Num Gas Bombs: 0 Serial #:

Laboratory Name: Laboratory Location:

Recovery Comments: Gravity = 25.8 api @ 58 deg F
Corrected Gravity = 26 api

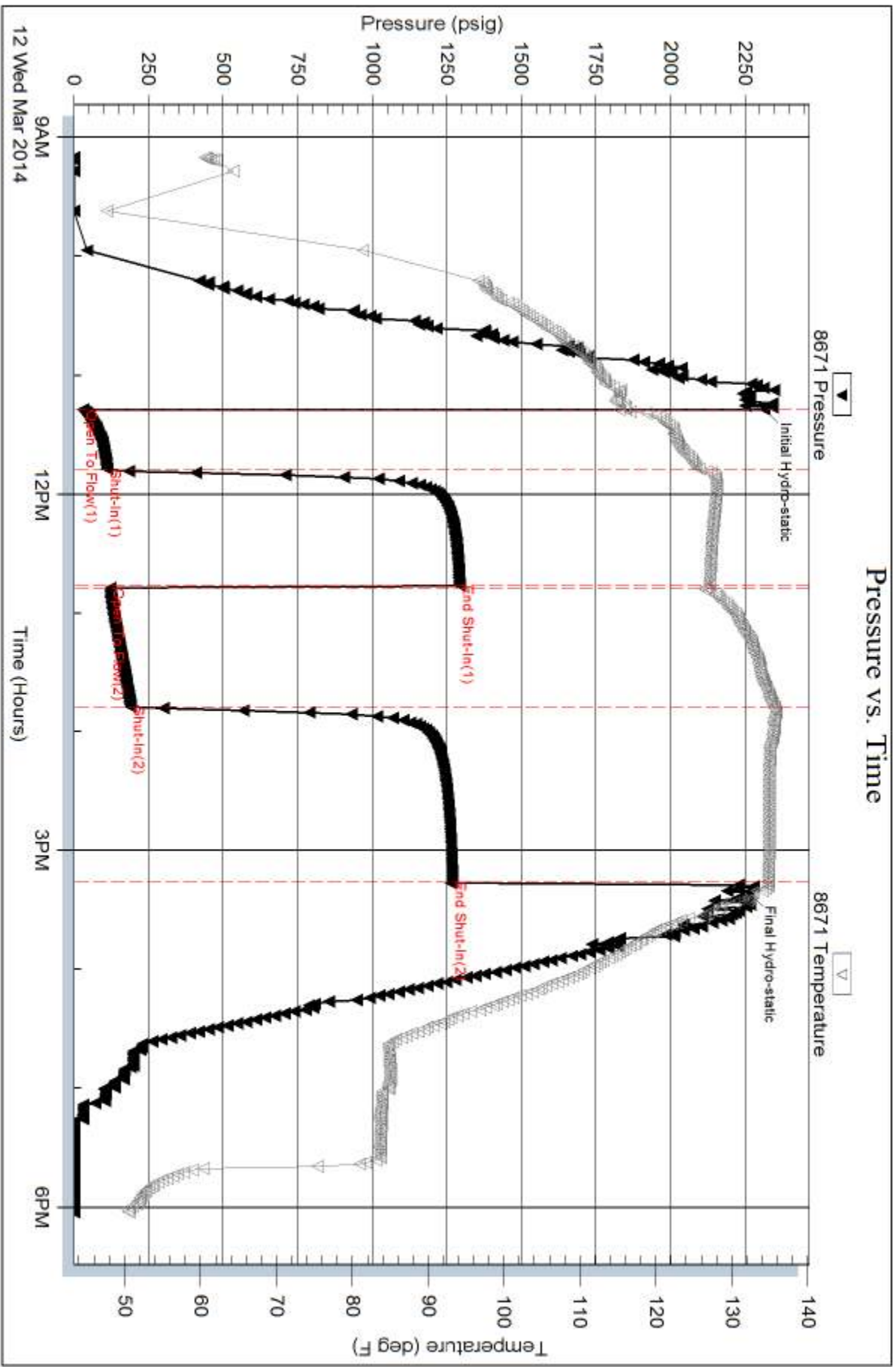
Serial #: 8671

Inside

Murfin Drilling Co., Inc.

Loker Trust#1-1

DST Test Number: 5

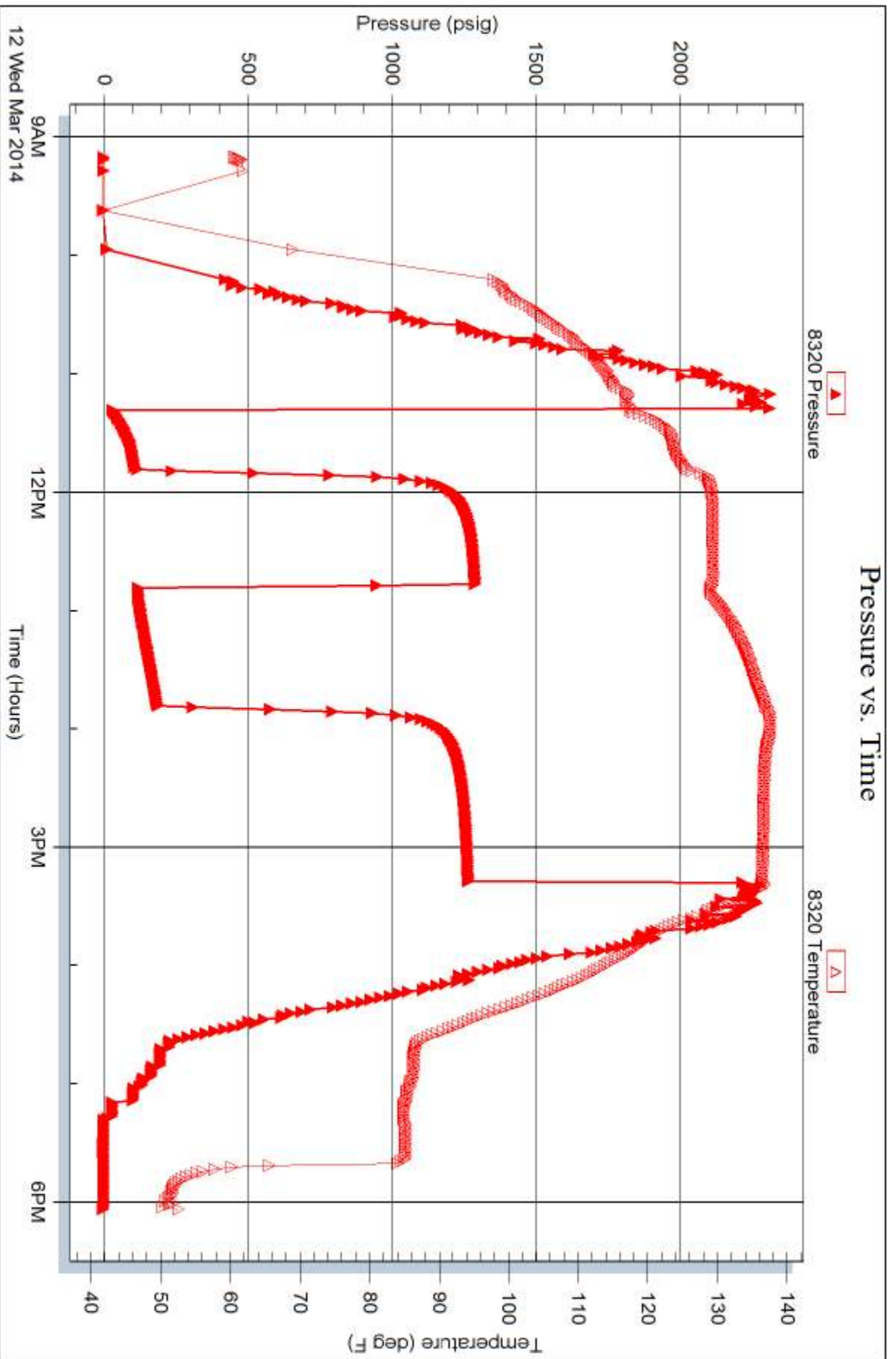


Serial #: 8320

Outside Murfin Drilling Co., Inc.

Loker Trust#1-1

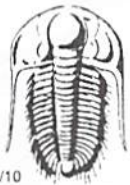
DST Test Number: 5



Trilobite Testing, Inc

Ref. No: 53498

Printed: 2014.03.16 @ 13:02:05



TRILOBITE TESTING INC.

1515 Commerce Parkway • Hays, Kansas 67601

Test Ticket

NO. 53494

Well Name & No. Loker Trust #1-1 Test No. 1 Date 3-8-14
 Company Murfin Drilling Co. Inc Elevation 3254 KB 3249 GL
 Address 250 N. Water Suite 300 Wichita, KS 67202
 Co. Rep / Geo. Jeff Christian Rig Murfin #8
 Location: Sec. 1 Twp. 3S Rge. 36w Co. Rawlins State KS

Interval Tested 4130 - 4200 Zone Tested LKC "A"
 Anchor Length 70 Drill Pipe Run 3946 Mud Wt. 9.1
 Top Packer Depth 4125 Drill Collars Run 186 Vis 56
 Bottom Packer Depth 4130 Wt. Pipe Run - WL 7.6
 Total Depth 4200 Chlorides 400 ppm System LCM 4

Blow Description IF: Blow built to 4"
ISI: No blowback
FF: Blow built to 9 1/2"
FSI: Blowback built to 1/8"

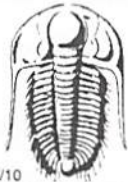
Rec	Feet of	%gas	%oil	%water	%mud
25	CO	7	92	-	1
20	MO	2	55	-	43
104	OCM	6	21	-	73
62	GOcm	12	8	-	80
	6IP=40'				

Rec Total 211 BHT 124 Gravity 35.2 API RW - @ - ° F Chlorides - ppm

(A) Initial Hydrostatic 2009 Test ★ 1250 T-On Location 13:15
 (B) First Initial Flow 20 Jars ★ 250 T-Started 14:00
 (C) First Final Flow 62 Safety Joint ★ 75 T-Open 16:27
 (D) Initial Shut-In 1290 Circ Sub _____ T-Pulled 20:27
 (E) Second Initial Flow 67 Hourly Standby _____ T-Out 22:40
 (F) Second Final Flow 107 Mileage 88RT 136.40 Comments Tool slid 4' to bottom
 (G) Final Shut-In 1282 Sampler _____ before open - No mud loss
 (H) Final Hydrostatic 1974 Straddle _____ Ruined Shale Packer _____
 Shale Packer _____ Ruined Packer _____
 Extra Packer _____ Extra Copies _____
 Initial Open 30 Extra Recorder _____ Sub Total 0
 Initial Shut-In 60 Day Standby _____ Total 1711.40
 Final Flow 60 Accessibility _____ MP/DST Disc't _____
 Final Shut-In 90 Sub Total 1711.40

Approved By Jeff Christian Our Representative James Windler

Trilobite Testing Inc. shall not be liable for damaged of any kind of the property or personnel of the one for whom a test is made, or for any loss suffered or sustained, directly or indirectly, through the use of its equipment, or its statements or opinion concerning the results of any test, tools lost or damaged in the hole shall be paid for at cost by the party for whom the test is made.



TRILOBITE TESTING INC.

1515 Commerce Parkway • Hays, Kansas 67601

Test Ticket

NO. 53495

Well Name & No. Loker Trust #1-1 Test No. 2 Date 3-9-14
 Company Murfin Drilling Co. Inc Elevation 3254 KB 3249 GL
 Address 250 N. Water Suite 300 Wichita, KS 67202
 Co. Rep / Geo. Jeff Christian Rig Murfin #8
 Location: Sec. 1 Twp. 3s Rge. 36w Co. Rawlins State KS

Interval Tested 4197 - 4248 Zone Tested LKC "B-D"
 Anchor Length 51 Drill Pipe Run 4006 Mud Wt. 9.3
 Top Packer Depth 4192 Drill Collars Run 186 Vis 55
 Bottom Packer Depth 4197 Wt. Pipe Run - WL 7.2
 Total Depth 4248 Chlorides 700 ppm System LCM 2

Blow Description IF: Blow built to just over 1"
ISI: No blowback
FF: Intermittent blow at open, built to 1/2"
FSI: No blowback

Rec	Feet of	%gas	%oil	%water	%mud
<u>45</u>	<u>Mud w/trace oil</u>	<u>trace</u>		<u>100</u>	
Rec	Feet of	%gas	%oil	%water	%mud
Rec	Feet of	%gas	%oil	%water	%mud
Rec	Feet of	%gas	%oil	%water	%mud
Rec	Feet of	%gas	%oil	%water	%mud

Rec Total 45 BHT 123 Gravity - API RW - @ - ° F Chlorides - ppm

(A) Initial Hydrostatic <u>2062</u>	<input type="checkbox"/> Test <u>*</u> 1250	T-On Location <u>7:45</u>
(B) First Initial Flow <u>19</u>	<input type="checkbox"/> Jars <u>*</u> 250	T-Started <u>7:58</u>
(C) First Final Flow <u>29</u>	<input type="checkbox"/> Safety Joint <u>*</u> 75	T-Open <u>10:07</u>
(D) Initial Shut-In <u>1257</u>	<input checked="" type="checkbox"/> Circ Sub	T-Pulled <u>13:08</u>
(E) Second Initial Flow <u>31</u>	<input checked="" type="checkbox"/> Hourly Standby	T-Out <u>15:30</u>
(F) Second Final Flow <u>40</u>	<input type="checkbox"/> Mileage <u>88 RT</u> 136.40	Comments
(G) Final Shut-In <u>1224</u>	<input checked="" type="checkbox"/> Sampler	
(H) Final Hydrostatic <u>2056</u>	<input checked="" type="checkbox"/> Straddle	<input checked="" type="checkbox"/> Ruined Shale Packer

Initial Open <u>30</u>	<input checked="" type="checkbox"/> Shale Packer	<input checked="" type="checkbox"/> Ruined Packer
Initial Shut-In <u>60</u>	<input checked="" type="checkbox"/> Extra Packer	<input checked="" type="checkbox"/> Extra Copies
Final Flow <u>30</u>	<input checked="" type="checkbox"/> Extra Recorder	Sub Total <u>0</u>
Final Shut-In <u>60</u>	<input checked="" type="checkbox"/> Day Standby	Total <u>1711.40</u>
	<input checked="" type="checkbox"/> Accessibility	MP/DST Disc't
	Sub Total <u>1711.40</u>	

Approved By Jeff Chite Our Representative James Winder

Trilobite Testing Inc. shall not be liable for damaged of any kind of the property or personnel of the one for whom a test is made, or for any loss suffered or sustained, directly or indirectly, through the use of its equipment, or its statements of opinion concerning the results of any test, tools lost or damaged in the hole shall be paid for at cost by the party for whom the test is made.



TRILOBITE TESTING INC.

1515 Commerce Parkway • Hays, Kansas 67601

Test Ticket

NO. 53496

4/10

Well Name & No. Loker Trust #1-1 Test No. 3 Date 3-10-14
 Company Murfin Drilling Co., Inc Elevation 3254 KB 3249 GL
 Address 250 N. Water Suite 300 Wichita, KS 67202
 Co. Rep / Geo. Jeff Christian Rig Murfin #8
 Location: Sec. 1 Twp. 3s Rge. 36w Co. Rawlins State Ks

Interval Tested 4258 - 4296 Zone Tested LKC ~ F-6"
 Anchor Length 38 Drill Pipe Run 4069 Mud Wt. 9.1
 Top Packer Depth 4253 Drill Collars Run 186 Vis 55
 Bottom Packer Depth 4258 Wt. Pipe Run - WL 7.2
 Total Depth 4296 Chlorides 700 ppm System LCM 2

Blow Description IF: Blow built to 1/2"
ISI: No blowback
FF: No blow
FSI: No blowback

Rec	Feet of	%gas	%oil	%water	%mud
<u>2</u>	<u>OCM</u>	<u>2</u>	<u>20</u>		<u>78</u>
Rec	Feet of	%gas	%oil	%water	%mud
Rec	Feet of	%gas	%oil	%water	%mud
Rec	Feet of	%gas	%oil	%water	%mud
Rec	Feet of	%gas	%oil	%water	%mud

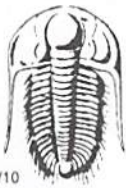
Rec Total 2 BHT 123 Gravity - API RW - @ - ° F Chlorides - ppm

(A) Initial Hydrostatic 2125 Test * 1250 T-On Location 12:00 AM
 (B) First Initial Flow 17 Jars * 250 T-Started ~~00:33~~
 (C) First Final Flow 20 Safety Joint * 75 T-Open 2:56
 (D) Initial Shut-In 166 Circ Sub T-Pulled 5:57
 (E) Second Initial Flow 20 Hourly Standby T-Out 8:10
 (F) Second Final Flow 22 Mileage 88RT 136.40 Comments _____
 (G) Final Shut-In 109 Sampler _____
 (H) Final Hydrostatic 2112 Straddle _____

Ruined Shale Packer
 Ruined Packer
 Extra Copies
 Sub Total 0
 Initial Open 30
 Initial Shut-In 60
 Final Flow 30
 Final Shut-In 60
 Extra Recorder
 Extra Packer
 Day Standby
 Accessibility
 Total 1711.40
 MP/DST Disc't _____
 Sub Total 1711.40

Approved By [Signature] Our Representative James Winder

Trilobite Testing Inc. shall not be liable for damaged of any kind of the property or personnel of the one for whom a test is made, or for any loss suffered or sustained, directly or indirectly, through the use of its equipment, or its statements or opinion concerning the results of any test, tools lost or damaged in the hole shall be paid for at cost by the party for whom the test is made.



TRILOBITE TESTING INC.

1515 Commerce Parkway • Hays, Kansas 67601

Test Ticket

NO. 53497

Well Name & No. Loker Trust #1-1 Test No. 4 Date 3-10-14
 Company Murfin Drilling Co. Inc. Elevation 3254 KB 3249 GL
 Address 250 N. Water Suite 300 Wichita, KS 67202
 Co. Rep / Geo. Jeff Christian Rig Murfin #8
 Location: Sec. 1 Twp. 3s Rge. 36w Co. Rawlins State KS

Interval Tested 4351-4430 Zone Tested LKC "J-K"
 Anchor Length 79 Drill Pipe Run 4166 Mud Wt. 8.9
 Top Packer Depth 4346 Drill Collars Run 186 Vis 60
 Bottom Packer Depth 4351 Wt. Pipe Run - WL 7.0
 Total Depth 4430 Chlorides 500 ppm System LCM 2

Blow Description IF: 1/4" Blow at open, built to 1 1/2"
ISI: No blowback
FF: Blow built to just under 1/2"
FSI: No blowback

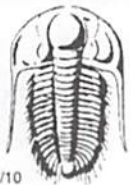
Rec	Feet of	%gas	%oil	%water	%mud
<u>45</u>	<u>mud w/oil spots</u>	<u>-</u>	<u>2</u>	<u>-</u>	<u>98</u>
Rec	Feet of	%gas	%oil	%water	%mud
Rec	Feet of	%gas	%oil	%water	%mud
Rec	Feet of	%gas	%oil	%water	%mud
Rec	Feet of	%gas	%oil	%water	%mud

Rec Total 45 BHT 126 Gravity - API RW - @ - ° F Chlorides - ppm

(A) Initial Hydrostatic <u>2207</u>	<input type="checkbox"/> Test <u>*</u> 1250	T-On Location <u>21:15</u>
(B) First Initial Flow <u>21</u>	<input type="checkbox"/> Jars <u>*</u> 250	T-Started <u>22:04</u>
(C) First Final Flow <u>34</u>	<input type="checkbox"/> Safety Joint <u>*</u> 75	T-Open <u>00:11</u>
(D) Initial Shut-In <u>1373</u>	<input checked="" type="checkbox"/> Circ Sub	T-Pulled <u>3:12</u>
(E) Second Initial Flow <u>36</u>	<input checked="" type="checkbox"/> Hourly Standby	T-Out <u>5:50</u>
(F) Second Final Flow <u>42</u>	<input type="checkbox"/> Mileage <u>88RT</u> 136.40	Comments _____
(G) Final Shut-In <u>1361</u>	<input checked="" type="checkbox"/> Sampler	_____
(H) Final Hydrostatic <u>2161</u>	<input checked="" type="checkbox"/> Straddle	<input checked="" type="checkbox"/> Ruined Shale Packer
Initial Open <u>30</u>	<input checked="" type="checkbox"/> Shale Packer	<input type="checkbox"/> Ruined Packer <u>*</u> 320
Initial Shut-In <u>60</u>	<input checked="" type="checkbox"/> Extra Packer	<input checked="" type="checkbox"/> Extra Copies
Final Flow <u>30</u>	<input checked="" type="checkbox"/> Extra Recorder	Sub Total <u>0</u>
Final Shut-In <u>60</u>	<input checked="" type="checkbox"/> Day Standby	Total <u>2031.40</u>
	<input checked="" type="checkbox"/> Accessibility	MP/DST Disc't _____
	Sub Total <u>1711.40</u>	

Approved By _____ Our Representative James Winder

Trilobite Testing Inc. shall not be liable for damaged of any kind of the property or personnel of the one for whom a test is made, or for any loss suffered or sustained, directly or indirectly, through the use of its equipment, or its statements or opinion concerning the results of any test, tools lost or damaged in the hole shall be paid for at cost by the party for whom the test is made.



TRILOBITE TESTING INC.

1515 Commerce Parkway • Hays, Kansas 67601

Test Ticket

NO. 53498

Well Name & No. Loker Trust #1-1 Test No. 5 Date 3-12-14
 Company Murfin Drilling Co. Inc. Elevation 3254 KB 3249 GL
 Address 250 N. Water Suite 300 Wichita, KS 67202
 Co. Rep / Geo. Jeff Christian Rig Murfin #8
 Location: Sec. 1 Twp. 3s Rge. 36w Co. Rawlins State KS

Interval Tested 4556 - 4686 Zone Tested Pawnee, Ft. Scott, Cherokee
 Anchor Length 130 Drill Pipe Run 4356 Mud Wt. 9.4
 Top Packer Depth 4551 Drill Collars Run 186 Vis 60
 Bottom Packer Depth 4556 Wt. Pipe Run - WL 6.4
 Total Depth 4686 Chlorides 700 ppm System LCM 2

Blow Description IF: Blow built to BOB (11") at 22 1/2 min.
ISI: Blowback built to 2"
FF: Blow built to BOB at 20 3/4 min.
FSI: Blowback built to 6"

Rec	Feet of	%gas	%oil	%water	%mud
<u>235</u>	<u>660</u>	<u>17</u>	<u>81</u>	<u>-</u>	<u>2</u>
<u>190</u>	<u>60cm</u>	<u>14</u>	<u>13</u>	<u>-</u>	<u>73</u>
<u>Rec</u>	<u>Feet of 6IP=265'</u>	<u>%gas</u>	<u>%oil</u>	<u>%water</u>	<u>%mud</u>
<u>Rec</u>	<u>Feet of</u>	<u>%gas</u>	<u>%oil</u>	<u>%water</u>	<u>%mud</u>
<u>Rec</u>	<u>Feet of</u>	<u>%gas</u>	<u>%oil</u>	<u>%water</u>	<u>%mud</u>

Rec Total 425 BHT 135 Gravity 26 API RW - @ - ° F Chlorides - ppm

(A) Initial Hydrostatic <u>2315</u>	<input type="checkbox"/> Test <u>*</u> 1250	T-On Location <u>8:30</u>
(B) First Initial Flow <u>31</u>	<input type="checkbox"/> Jars <u>*</u> 250	T-Started <u>9:10</u>
(C) First Final Flow <u>113</u>	<input type="checkbox"/> Safety Joint <u>*</u> 75	T-Open <u>11:17</u>
(D) Initial Shut-In <u>1294</u>	<input checked="" type="checkbox"/> Circ Sub	T-Pulled <u>15:16</u>
(E) Second Initial Flow <u>123</u>	<input type="checkbox"/> Hourly Standby	T-Out <u>17:55</u>
(F) Second Final Flow <u>190</u>	<input type="checkbox"/> Mileage <u>88RT</u> 136.40	Comments
(G) Final Shut-In <u>1270</u>	<input checked="" type="checkbox"/> Sampler	
(H) Final Hydrostatic <u>2263</u>	<input checked="" type="checkbox"/> Straddle	<input checked="" type="checkbox"/> Ruined Shale Packer

Initial Open <u>30</u>	<input checked="" type="checkbox"/> Extra Packer	<input checked="" type="checkbox"/> Extra Copies
Initial Shut-In <u>60</u>	<input checked="" type="checkbox"/> Extra Recorder	Sub Total <u>91.67</u>
Final Flow <u>60</u>	<input type="checkbox"/> Day Standby <u>?</u> 1d 2.75h	Total <u>1803.07</u>
Final Shut-In <u>90</u>	<input checked="" type="checkbox"/> Accessibility	MP/DST Disc't
	Sub Total <u>1711.40</u>	

Approved By Jeff Clt Our Representative James Winder

Trilobite Testing Inc. shall not be liable for damaged of any kind of the property or personnel of the one for whom a test is made, or for any loss suffered or sustained, directly or indirectly, through the use of its equipment, or its statements or opinion concerning the results of any test, tools lost or damaged in the hole shall be paid for at cost by the party for whom the test is made.