



DRILL STEM TEST REPORT

Prepared For: **American Warrior Inc.**

PO Box 399
Garden City KS 67846

ATTN: Wyatt Urban

Handy #7-29

29-34s-31w Seward,KS.

Start Date: 2014.06.03 @ 07:14:00

End Date: 2014.06.03 @ 14:35:54

Job Ticket #: 57218 DST #: 1

Trilobite Testing, Inc

PO Box 362 Hays, KS 67601

ph: 785-625-4778 fax: 785-625-5620

Printed: 2014.06.12 @ 13:18:42



**TRILOBITE
TESTING, INC**

DRILL STEM TEST REPORT

American Warrior Inc.
PO Box 399
Garden City KS 67846
ATTN: Wyatt Urban

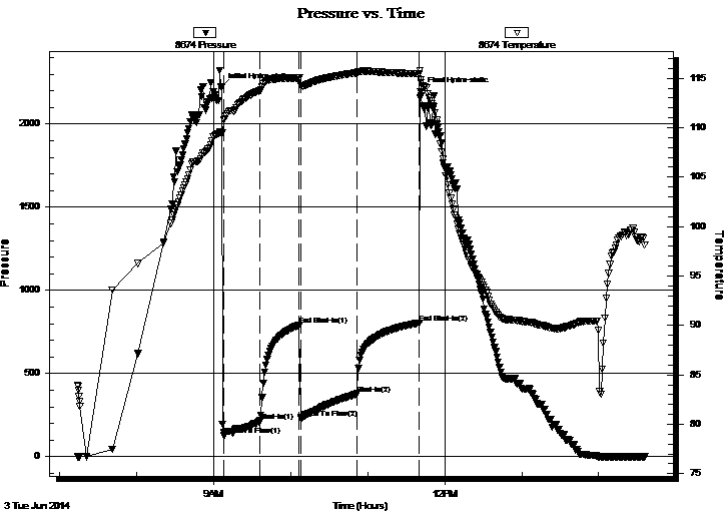
29-34s-31w Seward,KS.
Handy #7-29
Job Ticket: 57218 **DST#: 1**
Test Start: 2014.06.03 @ 07:14:00

GENERAL INFORMATION:

Formation: **Toronto**
Deviated: No Whipstock: ft (KB)
Time Tool Opened: 09:08:10
Time Test Ended: 14:35:54
Interval: **4390.00 ft (KB) To 4447.00 ft (KB) (TVD)**
Total Depth: 4447.00 ft (KB) (TVD)
Hole Diameter: 7.88 inches Hole Condition: Good
Test Type: Conventional Bottom Hole (Initial)
Tester: Will MacLean
Unit No: 72
Reference Elevations: 2735.00 ft (KB)
2722.00 ft (CF)
KB to GR/CF: 13.00 ft

Serial #: 8674 Inside
Press@RunDepth: 378.37 psig @ 4391.00 ft (KB) Capacity: 8000.00 psig
Start Date: 2014.06.03 End Date: 2014.06.03 Last Calib.: 2014.06.03
Start Time: 07:14:00 End Time: 14:35:54 Time On Btm: 2014.06.03 @ 09:06:10
Time Off Btm: 2014.06.03 @ 11:41:09

TEST COMMENT: IF- Surface Blow Built to BOB in 45 sec Gas to Surface in 18 min TSTM
IS- Weak Surface Blow Built to BOB in 4 min Died Back to 8"
FF- Surface Blow Built to BOB in 1 min
FS- Weak Surface Blow Built to BOB in 2 min



PRESSURE SUMMARY

Time (Min.)	Pressure (psig)	Temp (deg F)	Annotation
0	2222.39	109.45	Initial Hydro-static
2	126.31	110.82	Open To Flow (1)
30	215.54	113.76	Shut-In(1)
61	792.02	115.02	End Shut-In(1)
62	229.85	114.26	Open To Flow (2)
106	378.37	115.56	Shut-In(2)
154	805.07	115.45	End Shut-In(2)
155	2193.75	114.88	Final Hydro-static

Recovery

Length (ft)	Description	Volume (bbl)
243.00	OGMCW 3%oil 4%g 9%m 84%w	1.77
189.00	MWOCG 4%m 21%w 30%oil 45%g	2.65
63.00	MGWCO 7%m 10%g 18%w 65%oil	0.88
378.00	GOWCM 8%g 12%oil 24%w 56%m	5.30
10.00	OGCM 8%oil 14%g 78%m	0.14
0.00	GTS	0.00

Gas Rates

Choke (inches)	Pressure (psig)	Gas Rate (Mcf/d)



TRILOBITE TESTING, INC

DRILL STEM TEST REPORT

American Warrior Inc.
PO Box 399
Garden City KS 67846
ATTN: Wyatt Urban

29-34s-31w Seward, KS.

Handy #7-29

Job Ticket: 57218

DST#: 1

Test Start: 2014.06.03 @ 07:14:00

GENERAL INFORMATION:

Formation: **Toronto**

Deviated: No Whipstock: ft (KB)

Time Tool Opened: 09:08:10

Time Test Ended: 14:35:54

Test Type: Conventional Bottom Hole (Initial)

Tester: Will MacLean

Unit No: 72

Interval: **4390.00 ft (KB) To 4447.00 ft (KB) (TVD)**

Reference Elevations: 2735.00 ft (KB)

Total Depth: 4447.00 ft (KB) (TVD)

2722.00 ft (CF)

Hole Diameter: 7.88 inches Hole Condition: Good

KB to GR/CF: 13.00 ft

Serial #: **8355** Outside

Press@RunDepth: psig @ 4391.00 ft (KB)

Capacity: 8000.00 psig

Start Date: 2014.06.03

End Date:

2014.06.03

Last Calib.:

2014.06.03

Start Time: 07:14:05

End Time:

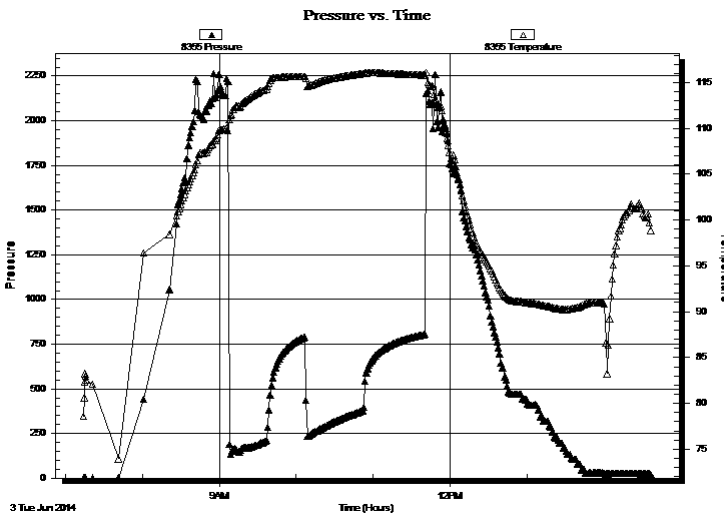
14:37:29

Time On Btm:

Time Off Btm:

TEST COMMENT: IF- Surface Blow Built to BOB in 45 sec Gas to Surface in 18 min TSTM
IS- Weak Surface Blow Built to BOB in 4 min Died Back to 8"
FF- Surface Blow Built to BOB in 1 min
FS- Weak Surface Blow Built to BOB in 2 min

PRESSURE SUMMARY



Time (Min.)	Pressure (psig)	Temp (deg F)	Annotation

Recovery

Length (ft)	Description	Volume (bbl)
243.00	OGMCW 3%oil 4%g 9%m 84%w	1.77
189.00	MWOCG 4%m 21%w 30%oil 45%g	2.65
63.00	MGWCO 7%m 10%g 18%w 65%oil	0.88
378.00	GOWCM 8%g 12%oil 24%w 56%m	5.30
10.00	OGCM 8%oil 14%g 78%m	0.14
0.00	GTS	0.00

Gas Rates

Choke (inches)	Pressure (psig)	Gas Rate (Mcf/d)



**TRILOBITE
TESTING, INC**

DRILL STEM TEST REPORT

TOOL DIAGRAM

American Warrior Inc.
PO Box 399
Garden City KS 67846
ATTN: Wyatt Urban

29-34s-31w Seward,KS.
Handy #7-29
Job Ticket: 57218 **DST#: 1**
Test Start: 2014.06.03 @ 07:14:00

Tool Information

Drill Pipe:	Length: 4199.00 ft	Diameter: 3.80 inches	Volume: 58.90 bbl	Tool Weight: 2000.00 lb
Heavy Wt. Pipe:	Length: 0.00 ft	Diameter: 0.00 inches	Volume: 0.00 bbl	Weight set on Packer: 28000.00 lb
Drill Collar:	Length: 180.00 ft	Diameter: 2.25 inches	Volume: 0.89 bbl	Weight to Pull Loose: 12000.00 lb
			<u>Total Volume: 59.79 bbl</u>	Tool Chased ft
Drill Pipe Above KB:	16.00 ft			String Weight: Initial 68000.00 lb
Depth to Top Packer:	4390.00 ft			Final 70000.00 lb
Depth to Bottom Packer:	ft			
Interval between Packers:	57.00 ft			
Tool Length:	84.00 ft			
Number of Packers:	2	Diameter: 6.75 inches		

Tool Comments:

Tool Description

Length (ft) Serial No. Position Depth (ft) Accum. Lengths

Tool Description	Length (ft)	Serial No.	Position	Depth (ft)	Accum. Lengths
Change Over Sub	1.00			4364.00	
Shut In Tool	5.00			4369.00	
Hydraulic tool	5.00			4374.00	
Jars	5.00			4379.00	
Safety Joint	2.00			4381.00	
Packer	5.00			4386.00	27.00 Bottom Of Top Packer
Packer	4.00			4390.00	
Stubb	1.00			4391.00	
Recorder	0.00	8355	Outside	4391.00	
Recorder	0.00	8674	Inside	4391.00	
Perforations	18.00			4409.00	
Change Over Sub	1.00			4410.00	
Drill Pipe	31.00			4441.00	
Change Over Sub	1.00			4442.00	
Bullnose	5.00			4447.00	57.00 Bottom Packers & Anchor

Total Tool Length: 84.00



**TRILOBITE
TESTING, INC**

DRILL STEM TEST REPORT

FLUID SUMMARY

American Warrior Inc.
PO Box 399
Garden City KS 67846
ATTN: Wyatt Urban

29-34s-31w Seward,KS.
Handy #7-29
Job Ticket: 57218 **DST#: 1**
Test Start: 2014.06.03 @ 07:14:00

Mud and Cushion Information

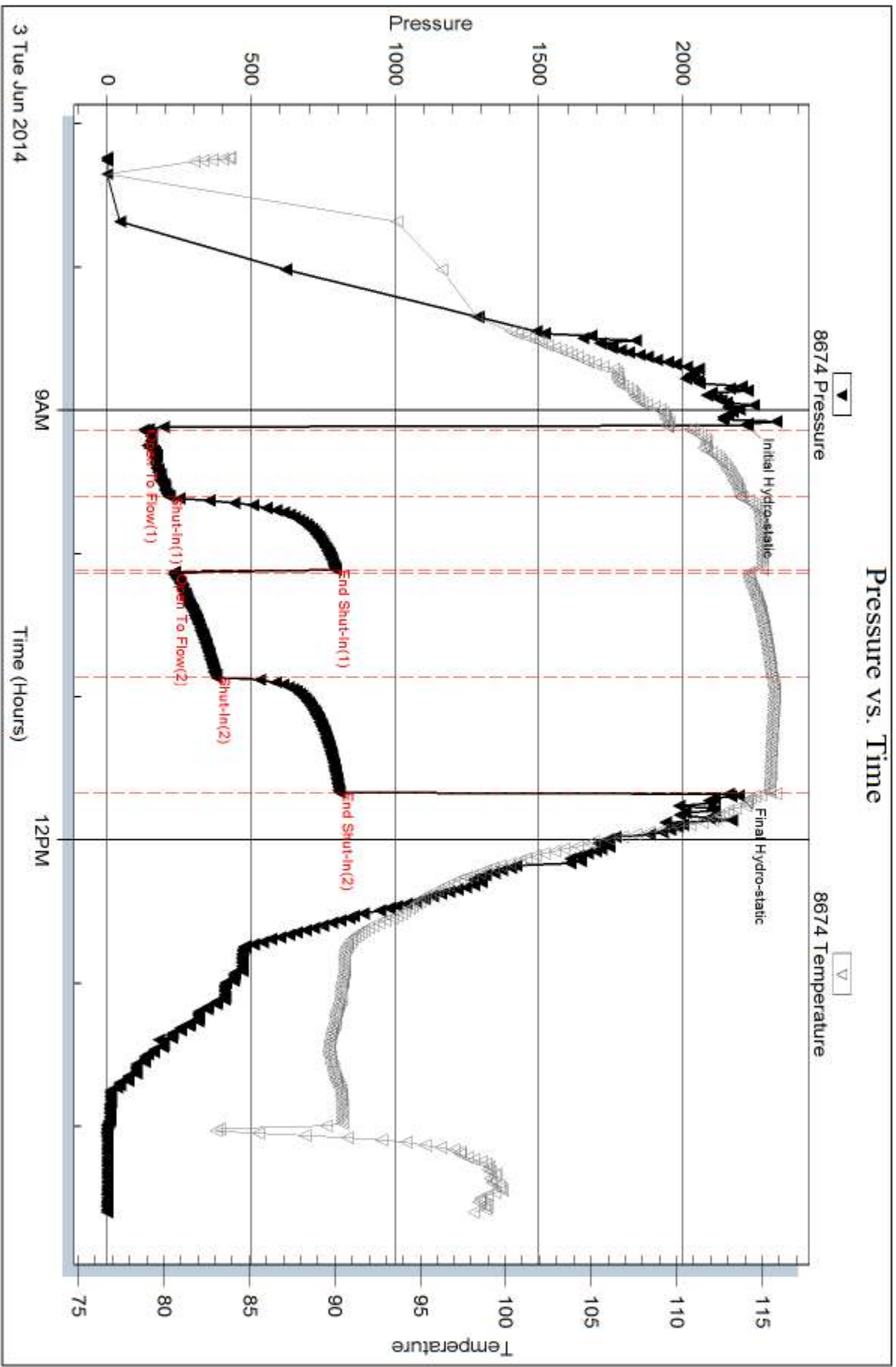
Mud Type: Gel Chem	Cushion Type:	Oil API:	deg API
Mud Weight: 9.00 lb/gal	Cushion Length: ft	Water Salinity:	18100 ppm
Viscosity: 50.00 sec/qt	Cushion Volume: bbl		
Water Loss: 10.07 in ³	Gas Cushion Type:		
Resistivity: ohm.m	Gas Cushion Pressure: psig		
Salinity: 4000.00 ppm			
Filter Cake: 1.00 inches			

Recovery Information

Recovery Table

Length ft	Description	Volume bbl
243.00	OGMCW 3%oil 4%g 9%m 84%w	1.769
189.00	MWOCG 4%m 21%w 30%oil 45%g	2.651
63.00	MGWCO 7%m 10%g 18%w 65%oil	0.884
378.00	GOWCM 8%g 12%oil 24%w 56%m	5.302
10.00	OGCM 8%oil 14%g 78%m	0.140
0.00	GTS	0.000

Total Length: 883.00 ft Total Volume: 10.746 bbl
 Num Fluid Samples: 0 Num Gas Bombs: 0 Serial #:
 Laboratory Name: Laboratory Location:
 Recovery Comments: RW is .274 @ 89f = 18100

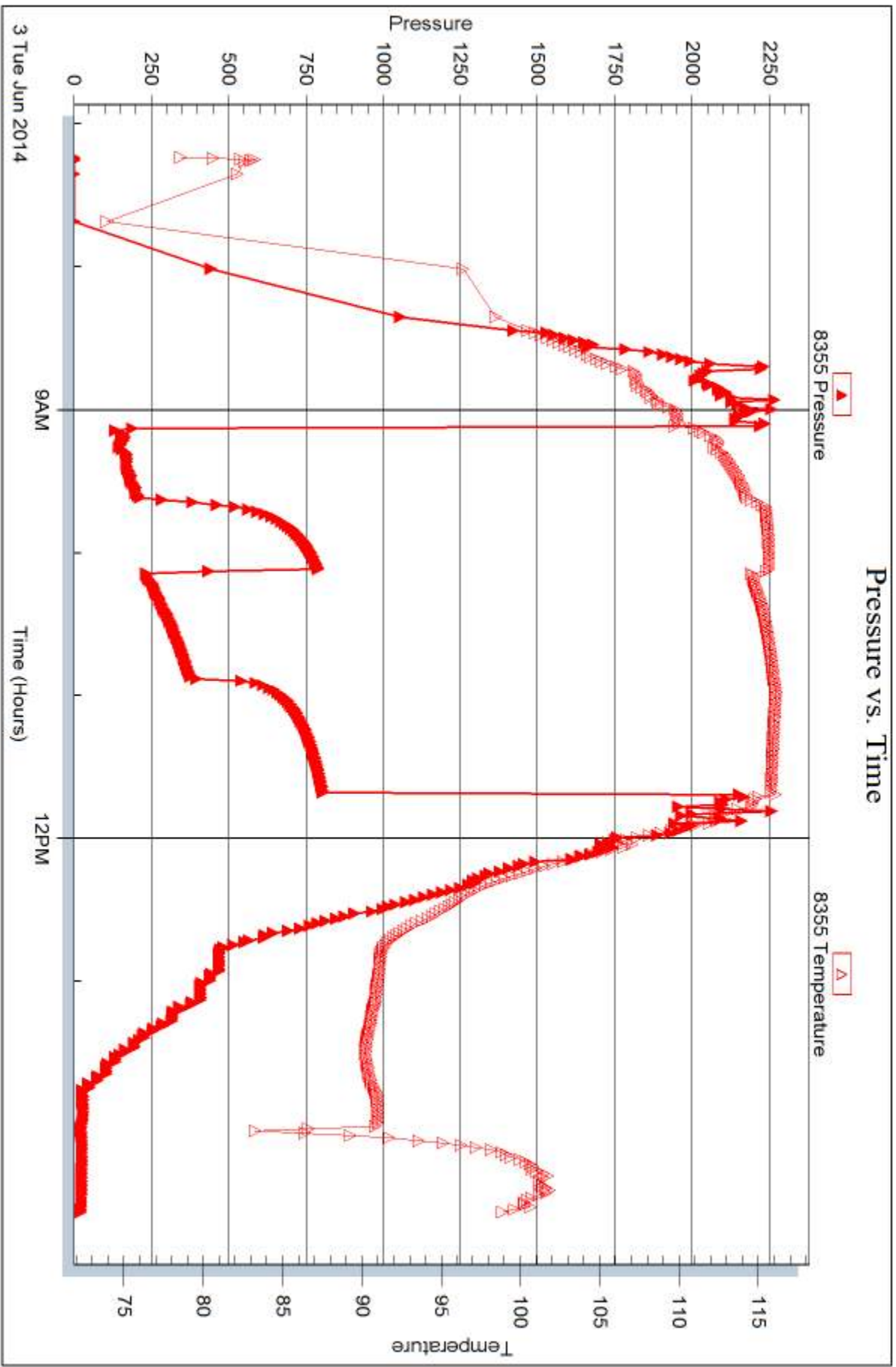


Serial #: 8355

Outside American Warrior Inc.

Handy #7-29

DST Test Number: 1



Triobite Testing, Inc

Ref. No: 57218

Printed: 2014.06.12 @ 13:18:44



DRILL STEM TEST REPORT

Prepared For: **American Warrior Inc.**

PO Box 399
Garden City KS 67846

ATTN: Wyatt Urban

Handy #7-29

29-34s-31w Seward,KS.

Start Date: 2014.06.06 @ 08:30:00

End Date: 2014.06.06 @ 22:31:55

Job Ticket #: 57219 DST #: 2

Trilobite Testing, Inc

PO Box 362 Hays, KS 67601

ph: 785-625-4778 fax: 785-625-5620

Printed: 2014.06.12 @ 13:18:22



TRILOBITE TESTING, INC

DRILL STEM TEST REPORT

American Warrior Inc.
 PO Box 399
 Garden City KS 67846
 ATTN: Wyatt Urban

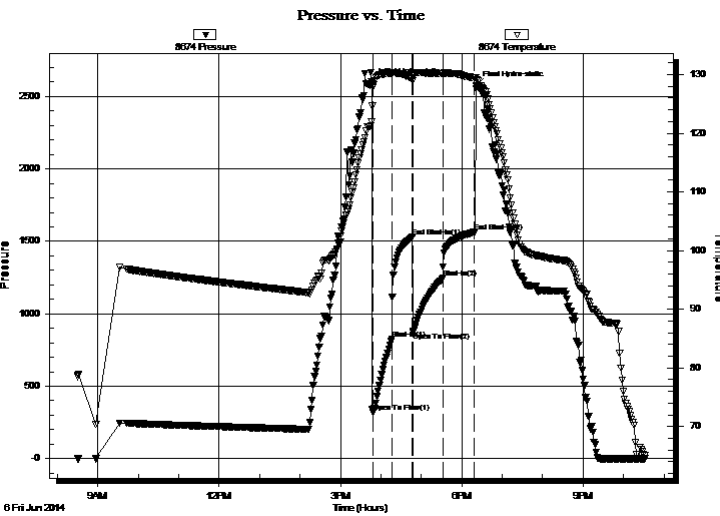
29-34s-31w Seward,KS.
Handy #7-29
 Job Ticket: 57219 **DST#: 2**
 Test Start: 2014.06.06 @ 08:30:00

GENERAL INFORMATION:

Formation: **Marmanton**
 Deviated: No Whipstock: ft (KB)
 Test Type: Conventional Bottom Hole (Reset)
 Time Tool Opened: 15:48:24 Tester: Will MacLean
 Time Test Ended: 22:31:55 Unit No: 72
 Interval: **5307.00 ft (KB) To 5350.00 ft (KB) (TVD)** Reference Elevations: 2735.00 ft (KB)
 Total Depth: 5350.00 ft (KB) (TVD) 2722.00 ft (CF)
 Hole Diameter: 7.88 inches Hole Condition: Good KB to GR/CF: 13.00 ft

Serial #: 8674 Inside
 Press@RunDepth: 1245.07 psig @ 5308.00 ft (KB) Capacity: 8000.00 psig
 Start Date: 2014.06.06 End Date: 2014.06.06 Last Calib.: 2014.06.06
 Start Time: 08:30:00 End Time: 22:31:55 Time On Btm: 2014.06.06 @ 15:46:09
 Time Off Btm: 2014.06.06 @ 18:21:40

TEST COMMENT: IF- Strong Surface Blow Built to BOB in 20 sec
 IS- Surface Blow Built to BOB in 1 1/2 min (Gas to Surface in 4 min)
 FF- Strong Surface Blow Built to BOB in 12 sec
 FS- Weak Surface Blow Built to BOB in 3 1/4 min



PRESSURE SUMMARY

Time (Min.)	Pressure (psig)	Temp (deg F)	Annotation
0	2598.20	121.99	Initial Hydro-static
3	318.51	127.79	Open To Flow (1)
31	825.88	130.18	Shut-In(1)
61	1529.01	129.31	End Shut-In(1)
62	871.22	129.01	Open To Flow (2)
106	1245.07	130.18	Shut-In(2)
153	1563.24	129.47	End Shut-In(2)
156	2571.42	129.44	Final Hydro-static

Recovery

Length (ft)	Description	Volume (bbl)
120.00	MCW 3% <i>m</i> 97% <i>w</i>	0.59
2330.00	Blew Out then Dropped the bar	32.14
63.00	OMWCG 7% <i>oil</i> 21% <i>m</i> 29% <i>w</i> 43% <i>g</i>	0.88
31.00	OGWCM 2% <i>oil</i> 8% <i>g</i> 20% <i>w</i> 70% <i>m</i>	0.43
0.00	GTS	0.00

* Recovery from multiple tests

Gas Rates

	Choke (inches)	Pressure (psig)	Gas Rate (Mcf/d)



DRILL STEM TEST REPORT

American Warrior Inc.
 PO Box 399
 Garden City KS 67846
 ATTN: Wyatt Urban

29-34s-31w Seward,KS.
Handy #7-29
 Job Ticket: 57219 **DST#: 2**
 Test Start: 2014.06.06 @ 08:30:00

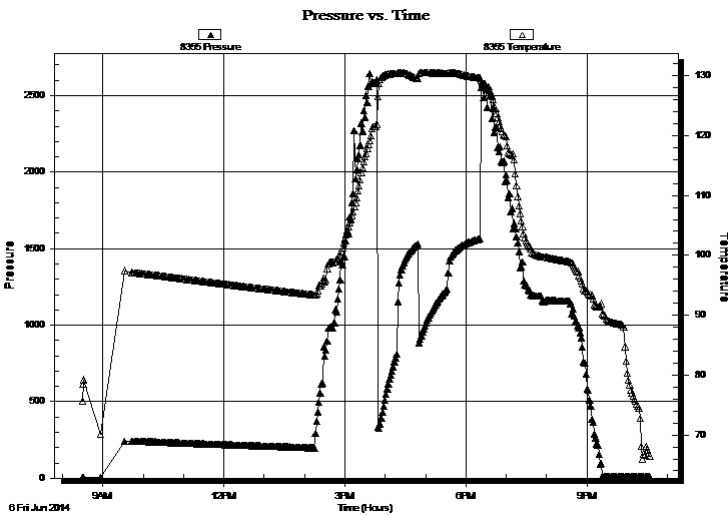
GENERAL INFORMATION:

Formation: **Marmanton**
 Deviated: No Whipstock: ft (KB)
 Time Tool Opened: 15:48:24
 Time Test Ended: 22:31:55
 Interval: **5307.00 ft (KB) To 5350.00 ft (KB) (TVD)**
 Total Depth: 5350.00 ft (KB) (TVD)
 Hole Diameter: 7.88 inches Hole Condition: Good
 Test Type: Conventional Bottom Hole (Reset)
 Tester: Will MacLean
 Unit No: 72
 Reference Elevations: 2735.00 ft (KB)
 2722.00 ft (CF)
 KB to GR/CF: 13.00 ft

Serial #: 8355 Outside

Press@RunDepth: psig @ 5308.00 ft (KB) Capacity: 8000.00 psig
 Start Date: 2014.06.06 End Date: 2014.06.06 Last Calib.: 2014.06.06
 Start Time: 08:30:05 End Time: 22:34:15 Time On Btm:
 Time Off Btm:

TEST COMMENT: IF- Strong Surface Blow Built to BOB in 20 sec
 IS- Surface Blow Built to BOB in 1 1/2 min (Gas to Surface in 4 min)
 FF- Strong Surface Blow Built to BOB in 12 sec
 FS- Weak Surface Blow Built to BOB in 3 1/4 min



PRESSURE SUMMARY

Time (Min.)	Pressure (psig)	Temp (deg F)	Annotation

Recovery

Length (ft)	Description	Volume (bbl)
120.00	MCW 3% m 97% w	0.59
2330.00	Blew Out then Dropped the bar	32.14
63.00	OMWCG 7% oil 21% m 29% w 43% g	0.88
31.00	OGWCM 2% oil 8% g 20% w 70% m	0.43
0.00	GTS	0.00

* Recovery from multiple tests

Gas Rates

Choke (inches)	Pressure (psig)	Gas Rate (Mcf/d)



**TRILOBITE
TESTING, INC**

DRILL STEM TEST REPORT

TOOL DIAGRAM

American Warrior Inc.
PO Box 399
Garden City KS 67846
ATTN: Wyatt Urban

29-34s-31w Seward,KS.
Handy #7-29
Job Ticket: 57219 **DST#: 2**
Test Start: 2014.06.06 @ 08:30:00

Tool Information

Drill Pipe:	Length: 5116.00 ft	Diameter: 3.80 inches	Volume: 71.76 bbl	Tool Weight: 2000.00 lb
Heavy Wt. Pipe:	Length: 0.00 ft	Diameter: 0.00 inches	Volume: 0.00 bbl	Weight set on Packer: 32000.00 lb
Drill Collar:	Length: 180.00 ft	Diameter: 2.25 inches	Volume: 0.89 bbl	Weight to Pull Loose: 26000.00 lb
			<u>Total Volume: 72.65 bbl</u>	Tool Chased ft
Drill Pipe Above KB:	16.00 ft			String Weight: Initial 78000.00 lb
Depth to Top Packer:	5307.00 ft			Final 84000.00 lb
Depth to Bottom Packer:	ft			
Interval between Packers:	43.00 ft			
Tool Length:	70.00 ft			
Number of Packers:	2	Diameter: 6.75 inches		

Tool Comments:

Tool Description

Tool Description	Length (ft)	Serial No.	Position	Depth (ft)	Accum. Lengths
Change Over Sub	1.00			5281.00	
Shut In Tool	5.00			5286.00	
Hydraulic tool	5.00			5291.00	
Jars	5.00			5296.00	
Safety Joint	2.00			5298.00	
Packer	5.00			5303.00	27.00 Bottom Of Top Packer
Packer	4.00			5307.00	
Stubb	1.00			5308.00	
Recorder	0.00	8355	Outside	5308.00	
Recorder	0.00	8674	Inside	5308.00	
Perforations	4.00			5312.00	
Change Over Sub	1.00			5313.00	
Drill Pipe	31.00			5344.00	
Change Over Sub	1.00			5345.00	
Bullnose	5.00			5350.00	43.00 Bottom Packers & Anchor

Total Tool Length: 70.00



**TRILOBITE
TESTING, INC**

DRILL STEM TEST REPORT

FLUID SUMMARY

American Warrior Inc.
PO Box 399
Garden City KS 67846
ATTN: Wyatt Urban

29-34s-31w Seward,KS.
Handy #7-29
Job Ticket: 57219 **DST#: 2**
Test Start: 2014.06.06 @ 08:30:00

Mud and Cushion Information

Mud Type: Gel Chem	Cushion Type:	Oil API:	deg API
Mud Weight: 9.00 lb/gal	Cushion Length: ft	Water Salinity:	24000 ppm
Viscosity: 56.00 sec/qt	Cushion Volume: bbl		
Water Loss: 9.08 in ³	Gas Cushion Type:		
Resistivity: ohm.m	Gas Cushion Pressure: psig		
Salinity: 3800.00 ppm			
Filter Cake: 1.00 inches			

Recovery Information

Recovery Table

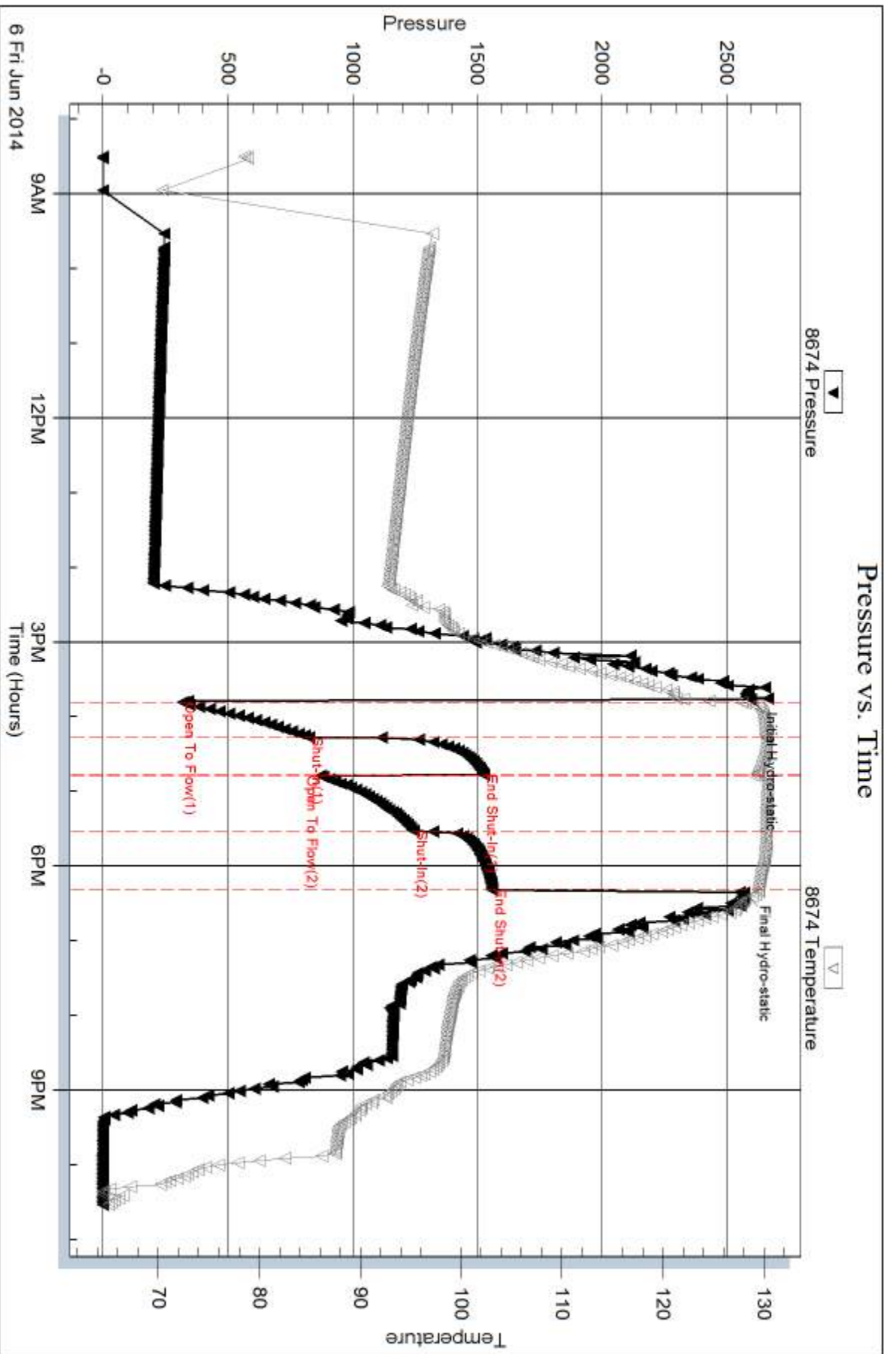
Length ft	Description	Volume bbl
120.00	MCW 3%m 97%w	0.590
2330.00	Blew Out then Dropped the bar	32.137
63.00	OMWCG 7%oil 21%m 29%w 43%g	0.884
31.00	OGWCM 2%oil 8%g 20%w 70%m	0.435
0.00	GTS	0.000

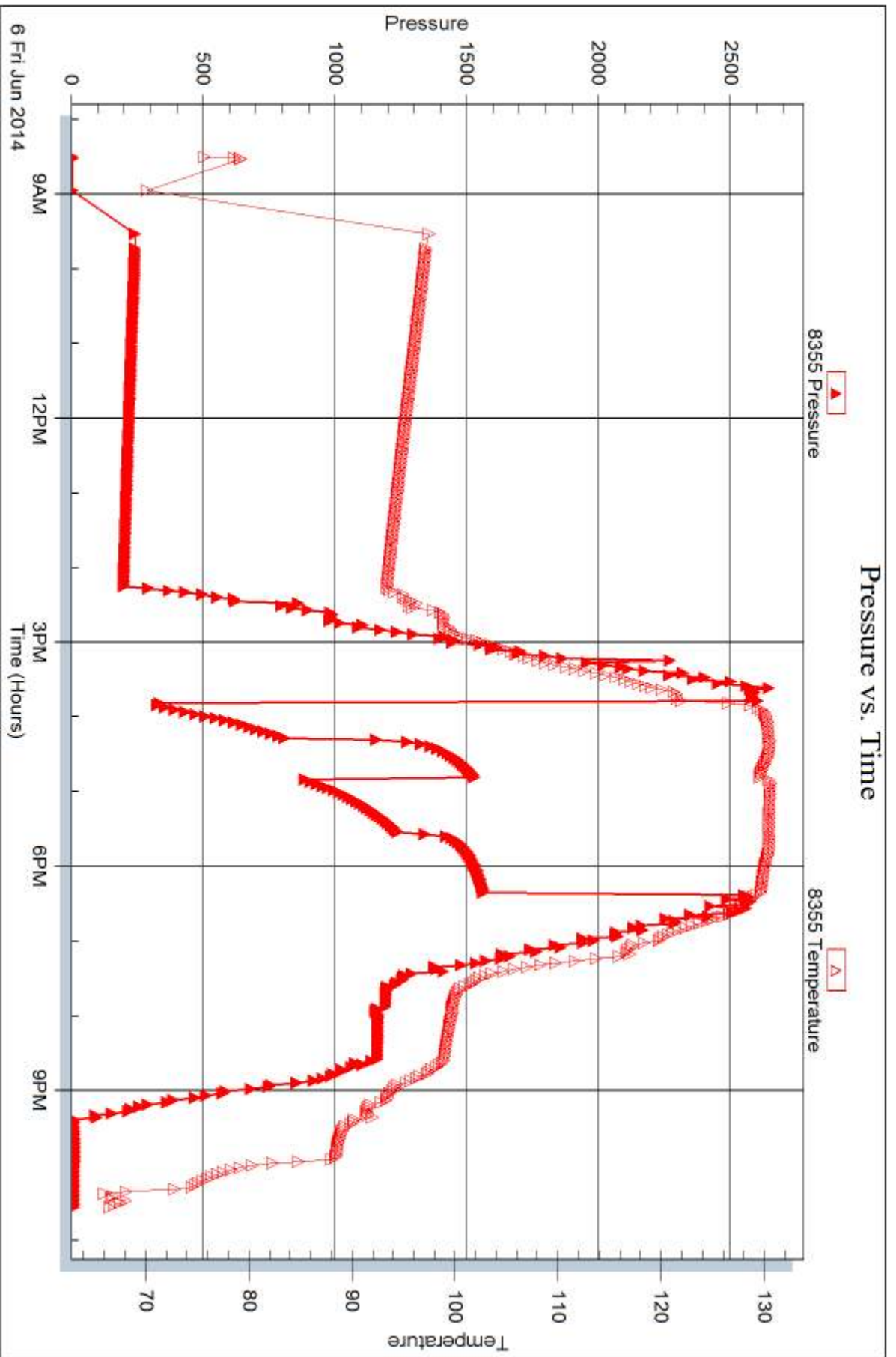
Total Length: 2544.00 ft Total Volume: 34.046 bbl

Num Fluid Samples: 0 Num Gas Bombs: 0 Serial #:

Laboratory Name: Laboratory Location:

Recovery Comments: RW is .214 @ 89f = 24000







DRILL STEM TEST REPORT

Prepared For: **American Warrior Inc.**

PO Box 399
Garden City KS 67846

ATTN: Wyatt Urban

Handy #7-29

29-34s-31w Seward,KS.

Start Date: 2014.06.08 @ 23:34:00

End Date: 2014.06.09 @ 07:36:39

Job Ticket #: 57220 DST #: 3

Trilobite Testing, Inc
PO Box 362 Hays, KS 67601
ph: 785-625-4778 fax: 785-625-5620

Printed: 2014.06.12 @ 13:18:01



**TRILOBITE
TESTING, INC**

DRILL STEM TEST REPORT

American Warrior Inc.
PO Box 399
Garden City KS 67846
ATTN: Wyatt Urban

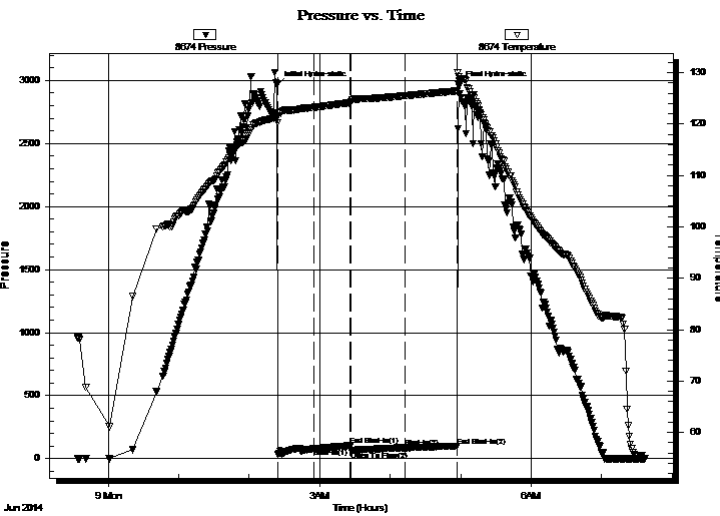
29-34s-31w Seward,KS.
Handy #7-29
Job Ticket: 57220 **DST#: 3**
Test Start: 2014.06.08 @ 23:34:00

GENERAL INFORMATION:

Formation: **Morrow Sands**
Deviated: No Whipstock: ft (KB)
Time Tool Opened: 02:24:10
Time Test Ended: 07:36:39
Interval: **5766.00 ft (KB) To 5848.00 ft (KB) (TVD)**
Total Depth: 5848.00 ft (KB) (TVD)
Hole Diameter: 7.88 inches Hole Condition: Good
Test Type: Conventional Bottom Hole (Reset)
Tester: Will MacLean
Unit No: 72
Reference Elevations: 2735.00 ft (KB)
2722.00 ft (CF)
KB to GR/CF: 13.00 ft

Serial #: 8674 Inside
Press@RunDepth: 87.56 psig @ 5769.00 ft (KB) Capacity: 8000.00 psig
Start Date: 2014.06.08 End Date: 2014.06.09 Last Calib.: 2014.06.09
Start Time: 23:34:00 End Time: 07:36:39 Time On Btm: 2014.06.09 @ 02:23:55
Time Off Btm: 2014.06.09 @ 04:58:24

TEST COMMENT: IF- Weak Surface Blow Built to 3/4"
IS- No Blow
FF- No Blow
FS- No Blow



PRESSURE SUMMARY

Time (Min.)	Pressure (psig)	Temp (deg F)	Annotation
0	2961.60	121.27	Initial Hydro-static
1	32.91	120.25	Open To Flow (1)
31	78.68	123.26	Shut-In(1)
63	102.80	124.16	End Shut-In(1)
63	62.25	124.28	Open To Flow (2)
109	87.56	125.53	Shut-In(2)
153	100.20	126.44	End Shut-In(2)
155	2962.93	129.21	Final Hydro-static

Recovery

Length (ft)	Description	Volume (bbl)
10.00	100% mud	0.05

* Recovery from multiple tests

Gas Rates

Choke (inches)	Pressure (psig)	Gas Rate (Mcf/d)



**TRILOBITE
TESTING, INC.**

DRILL STEM TEST REPORT

American Warrior Inc.
PO Box 399
Garden City KS 67846
ATTN: Wyatt Urban

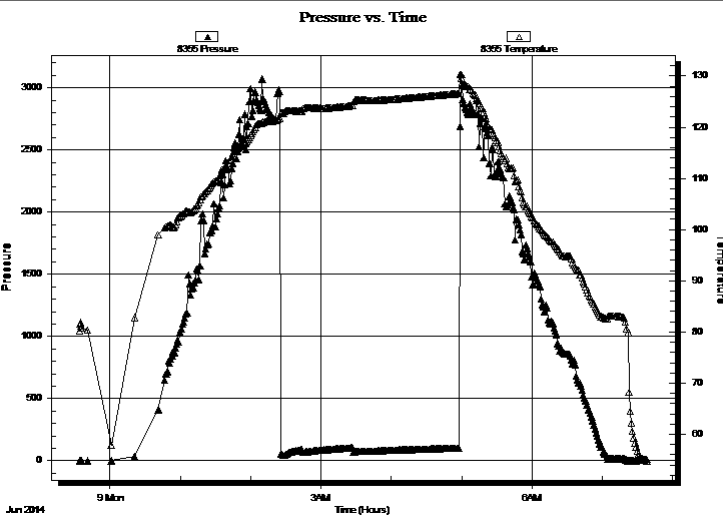
29-34s-31w Seward,KS.
Handy #7-29
Job Ticket: 57220 **DST#: 3**
Test Start: 2014.06.08 @ 23:34:00

GENERAL INFORMATION:

Formation: **Morrow Sands**
Deviated: No Whipstock: ft (KB)
Time Tool Opened: 02:24:10
Time Test Ended: 07:36:39
Interval: **5766.00 ft (KB) To 5848.00 ft (KB) (TVD)**
Total Depth: 5848.00 ft (KB) (TVD)
Hole Diameter: 7.88 inches Hole Condition: Good
Test Type: Conventional Bottom Hole (Reset)
Tester: Will MacLean
Unit No: 72
Reference Elevations: 2735.00 ft (KB)
2722.00 ft (CF)
KB to GR/CF: 13.00 ft

Serial #: 8355 Outside
Press@RunDepth: psig @ 5769.00 ft (KB) Capacity: 8000.00 psig
Start Date: 2014.06.08 End Date: 2014.06.09 Last Calib.: 2014.06.09
Start Time: 23:34:05 End Time: 07:38:14 Time On Btm:
Time Off Btm:

TEST COMMENT: IF- Weak Surface Blow Built to 3/4"
IS- No Blow
FF- No Blow
FS- No Blow



PRESSURE SUMMARY

Time (Min.)	Pressure (psig)	Temp (deg F)	Annotation

Recovery

Length (ft)	Description	Volume (bbl)
10.00	100% mud	0.05

Gas Rates

	Choke (inches)	Pressure (psig)	Gas Rate (Mcf/d)

* Recovery from multiple tests



**TRILOBITE
TESTING, INC**

DRILL STEM TEST REPORT

TOOL DIAGRAM

American Warrior Inc.
PO Box 399
Garden City KS 67846
ATTN: Wyatt Urban

29-34s-31w Seward,KS.
Handy #7-29
Job Ticket: 57220 **DST#: 3**
Test Start: 2014.06.08 @ 23:34:00

Tool Information

Drill Pipe:	Length: 5590.00 ft	Diameter: 3.80 inches	Volume: 78.41 bbl	Tool Weight: 2000.00 lb
Heavy Wt. Pipe:	Length: 0.00 ft	Diameter: 0.00 inches	Volume: 0.00 bbl	Weight set on Packer: 30000.00 lb
Drill Collar:	Length: 180.00 ft	Diameter: 2.25 inches	Volume: 0.89 bbl	Weight to Pull Loose: 22000.00 lb
			<u>Total Volume: 79.30 bbl</u>	Tool Chased ft
Drill Pipe Above KB:	31.00 ft			String Weight: Initial 78000.00 lb
Depth to Top Packer:	5766.00 ft			Final 78000.00 lb
Depth to Bottom Packer:	ft			
Interval between Packers:	82.00 ft			
Tool Length:	109.00 ft			
Number of Packers:	2	Diameter: 6.75 inches		

Tool Comments:

Tool Description

Tool Description	Length (ft)	Serial No.	Position	Depth (ft)	Accum. Lengths
Change Over Sub	1.00			5740.00	
Shut In Tool	5.00			5745.00	
Hydraulic tool	5.00			5750.00	
Jars	5.00			5755.00	
Safety Joint	2.00			5757.00	
Packer	5.00			5762.00	27.00 Bottom Of Top Packer
Packer	4.00			5766.00	
Stubb	1.00			5767.00	
Perforations	2.00			5769.00	
Recorder	0.00	8355	Outside	5769.00	
Recorder	0.00	8674	Inside	5769.00	
Perforations	10.00			5779.00	
Change Over Sub	1.00			5780.00	
Drill Pipe	62.00			5842.00	
Change Over Sub	1.00			5843.00	
Bullnose	5.00			5848.00	82.00 Bottom Packers & Anchor
Total Tool Length:	109.00				



**TRILOBITE
TESTING, INC**

DRILL STEM TEST REPORT

FLUID SUMMARY

American Warrior Inc.
PO Box 399
Garden City KS 67846
ATTN: Wyatt Urban

29-34s-31w Seward,KS.
Handy #7-29
Job Ticket: 57220 **DST#: 3**
Test Start: 2014.06.08 @ 23:34:00

Mud and Cushion Information

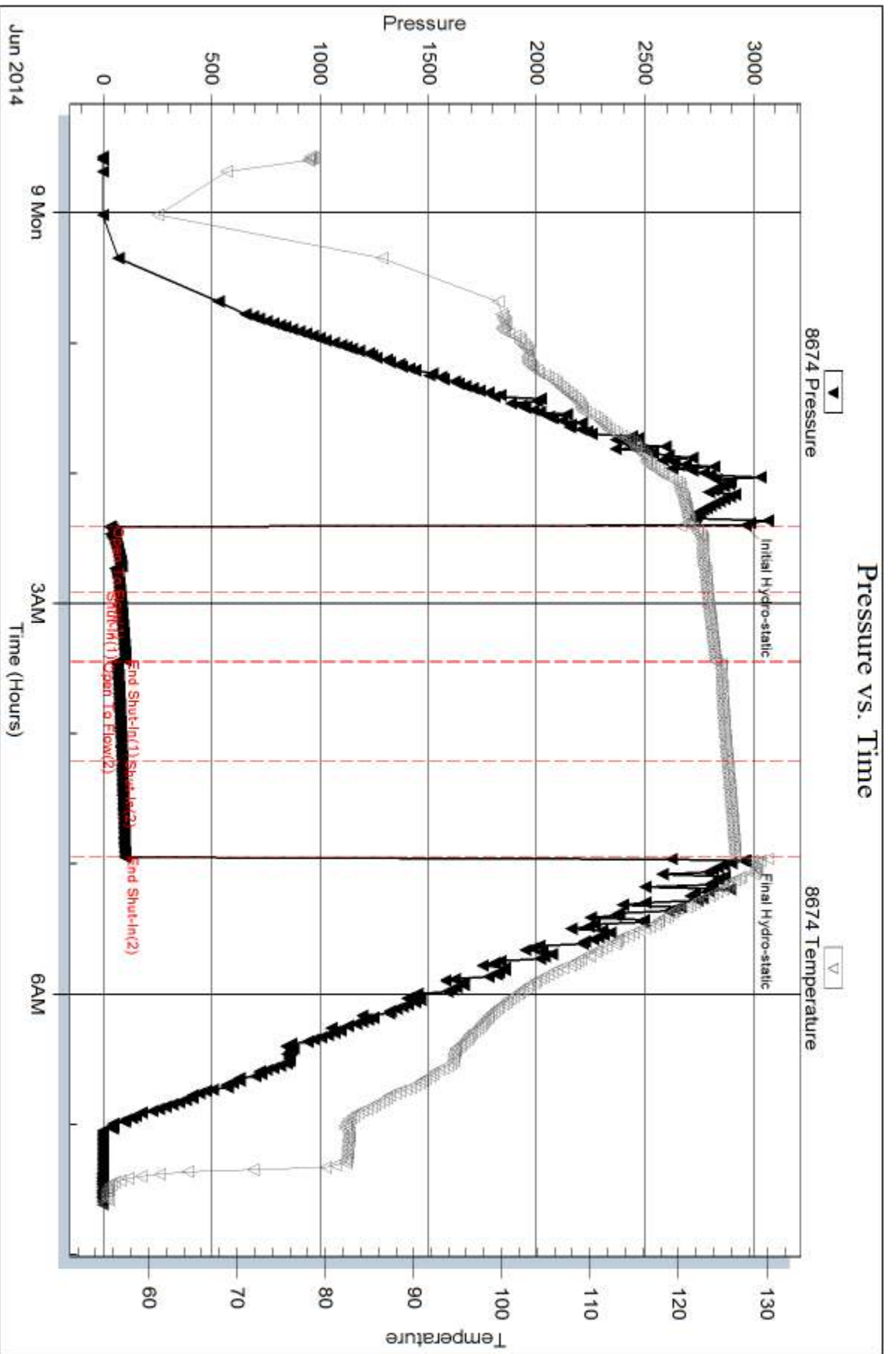
Mud Type: Gel Chem	Cushion Type:	Oil API:	deg API
Mud Weight: 9.00 lb/gal	Cushion Length: ft	Water Salinity:	ppm
Viscosity: 57.00 sec/qt	Cushion Volume: bbl		
Water Loss: 9.12 in ³	Gas Cushion Type:		
Resistivity: ohm.m	Gas Cushion Pressure: psig		
Salinity: 5700.00 ppm			
Filter Cake: 1.00 inches			

Recovery Information

Recovery Table

Length ft	Description	Volume bbl
10.00	100%mud	0.049

Total Length: 10.00 ft Total Volume: 0.049 bbl
 Num Fluid Samples: 0 Num Gas Bombs: 0 Serial #:
 Laboratory Name: Laboratory Location:
 Recovery Comments:

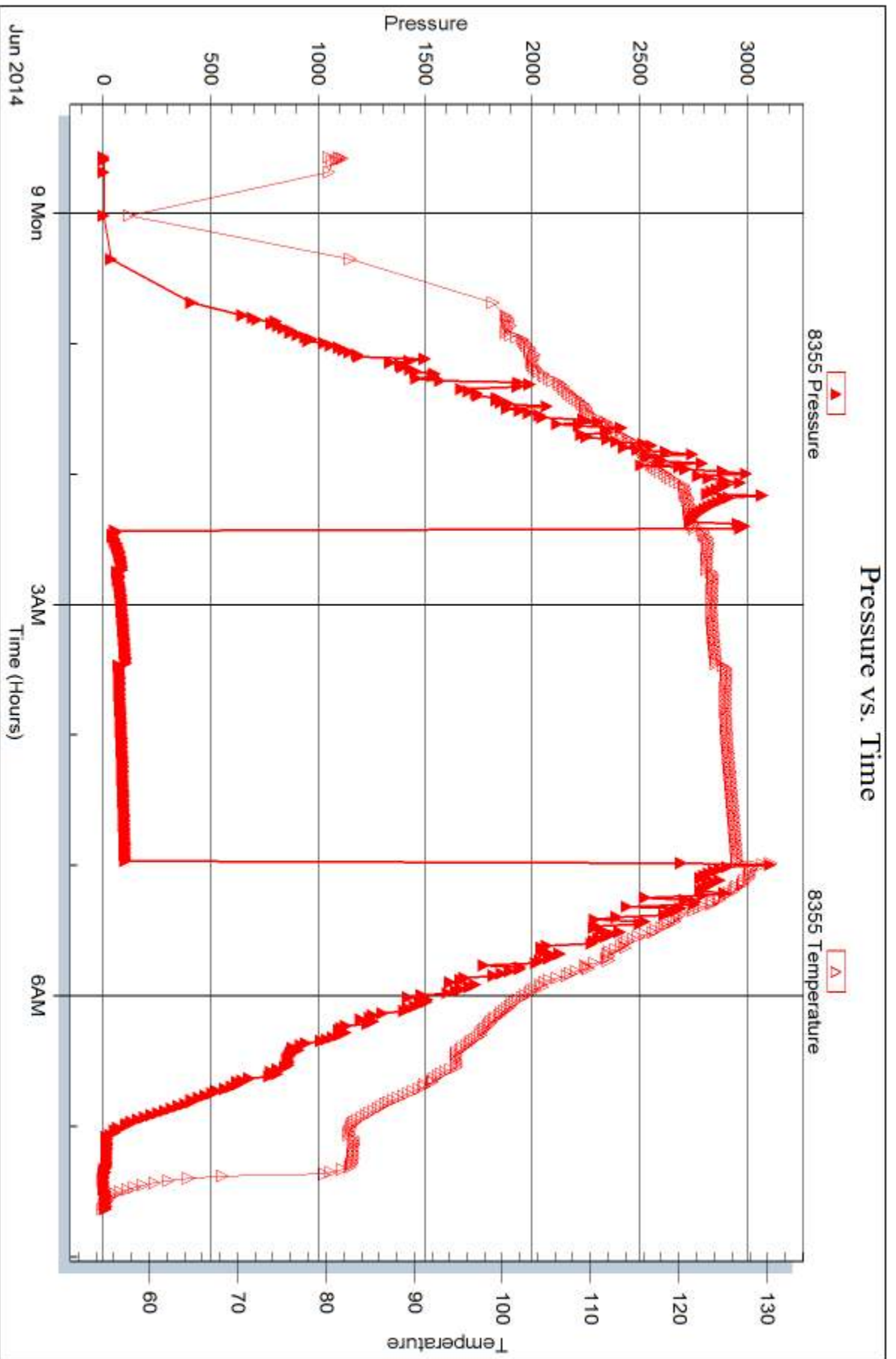


Serial #: 8355

Outside American Warrior Inc.

Handy #7-29

DST Test Number: 3



Triobite Testing, Inc

Ref. No: 57220

Printed: 2014.06.12 @ 13:18:02



DRILL STEM TEST REPORT

Prepared For: **American Warrior Inc.**

PO Box 399
Garden City KS 67846

ATTN: Wyatt Urban

Handy #7-29

29-34s-31w Seward,KS.

Start Date: 2014.06.09 @ 23:14:00

End Date: 2014.06.10 @ 07:10:54

Job Ticket #: 57221 DST #: 4

Trilobite Testing, Inc
PO Box 362 Hays, KS 67601
ph: 785-625-4778 fax: 785-625-5620

Printed: 2014.06.12 @ 13:17:38



**TRILOBITE
TESTING, INC**

DRILL STEM TEST REPORT

American Warrior Inc.
PO Box 399
Garden City KS 67846
ATTN: Wyatt Urban

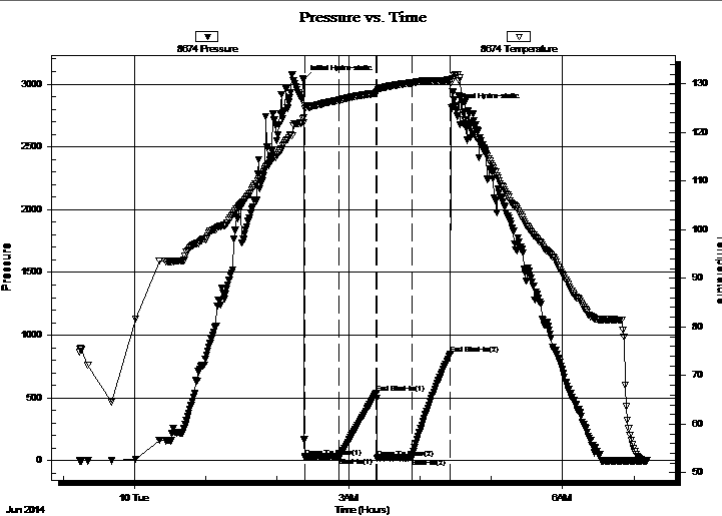
29-34s-31w Seward,KS.
Handy #7-29
Job Ticket: 57221 **DST#: 4**
Test Start: 2014.06.09 @ 23:14:00

GENERAL INFORMATION:

Formation: **Upper Chester**
 Deviated: No Whipstock: ft (KB)
 Time Tool Opened: 02:23:10
 Time Test Ended: 07:10:54
 Interval: **5908.00 ft (KB) To 5946.00 ft (KB) (TVD)**
 Total Depth: 5946.00 ft (KB) (TVD)
 Hole Diameter: 7.88 inches Hole Condition: Good
 Test Type: Conventional Bottom Hole (Reset)
 Tester: Will MacLean
 Unit No: 72
 Reference Elevations: 2735.00 ft (KB)
 2722.00 ft (CF)
 KB to GR/CF: 13.00 ft

Serial #: 8674 Inside
 Press@RunDepth: 22.63 psig @ 5912.00 ft (KB) Capacity: 8000.00 psig
 Start Date: 2014.06.09 End Date: 2014.06.10 Last Calib.: 2014.06.10
 Start Time: 23:14:00 End Time: 07:10:54 Time On Btm: 2014.06.10 @ 02:22:25
 Time Off Btm: 2014.06.10 @ 04:26:39

TEST COMMENT: IF- Strong Surface Blow Built to BOB in 20 sec Died Back to 5" Built Back to BOB in 24 min
 IS- No Blow
 FF- Strong Surface Blow Built to BOB in 8 sec Died Back to 7 1/2" Built Back to BOB in 19 min
 FS- No Blow I was Smelling for gas coming OOH with the Test I never could smell it



PRESSURE SUMMARY

Time (Min.)	Pressure (psig)	Temp (deg F)	Annotation
0	3036.23	123.09	Initial Hydro-static
1	26.05	124.80	Open To Flow (1)
30	29.18	126.65	Shut-In(1)
61	539.73	128.08	End Shut-In(1)
62	18.56	128.37	Open To Flow (2)
91	22.63	130.22	Shut-In(2)
124	851.16	130.80	End Shut-In(2)
125	2809.70	130.38	Final Hydro-static

Recovery

Length (ft)	Description	Volume (bbl)
60.00	GCM 4%g 96%m	0.30
0.00	Never Could Smell the Gas	0.00

* Recovery from multiple tests

Gas Rates

	Choke (inches)	Pressure (psig)	Gas Rate (Mcf/d)



TRILOBITE TESTING, INC

DRILL STEM TEST REPORT

American Warrior Inc.
 PO Box 399
 Garden City KS 67846
 ATTN: Wyatt Urban

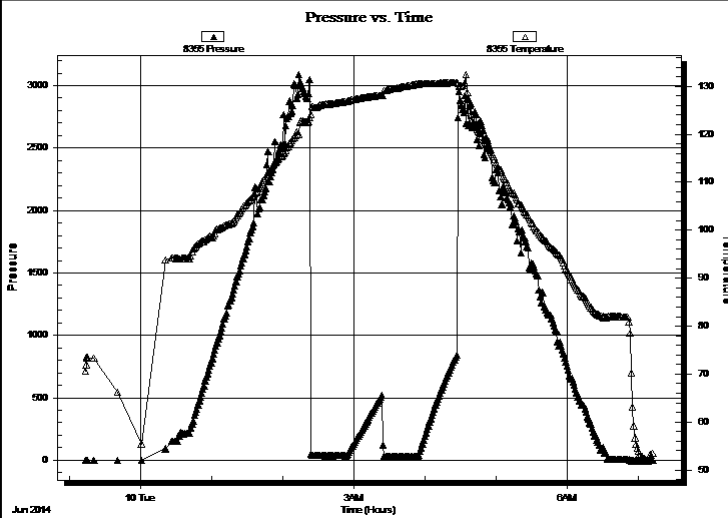
29-34s-31w Seward,KS.
Handy #7-29
 Job Ticket: 57221 **DST#: 4**
 Test Start: 2014.06.09 @ 23:14:00

GENERAL INFORMATION:

Formation: **Upper Chester**
 Deviated: No Whipstock: ft (KB)
 Time Tool Opened: 02:23:10
 Time Test Ended: 07:10:54
 Interval: **5908.00 ft (KB) To 5946.00 ft (KB) (TVD)**
 Total Depth: 5946.00 ft (KB) (TVD)
 Hole Diameter: 7.88 inches Hole Condition: Good
 Test Type: Conventional Bottom Hole (Reset)
 Tester: Will MacLean
 Unit No: 72
 Reference Elevations: 2735.00 ft (KB)
 2722.00 ft (CF)
 KB to GR/CF: 13.00 ft

Serial #: 8355 Outside
 Press@RunDepth: psig @ 5912.00 ft (KB) Capacity: 8000.00 psig
 Start Date: 2014.06.09 End Date: 2014.06.10 Last Calib.: 2014.06.10
 Start Time: 23:14:05 End Time: 07:12:29 Time On Btm:
 Time Off Btm:

TEST COMMENT: IF- Strong Surface Blow Built to BOB in 20 sec Died Back to 5" Built Back to BOB in 24 min
 IS- No Blow
 FF- Strong Surface Blow Built to BOB in 8 sec Died Back to 7 1/2" Built Back to BOB in 19 min
 FS- No Blow I was Smelling for gas coming OOH with the Test I never could smell it



PRESSURE SUMMARY			
Time (Min.)	Pressure (psig)	Temp (deg F)	Annotation

Recovery		
Length (ft)	Description	Volume (bbl)
60.00	GCM 4%g 96%m	0.30
0.00	Never Could Smell the Gas	0.00

* Recovery from multiple tests

Gas Rates			
	Choke (inches)	Pressure (psig)	Gas Rate (Mcf/d)



**TRILOBITE
TESTING, INC**

DRILL STEM TEST REPORT

TOOL DIAGRAM

American Warrior Inc.
PO Box 399
Garden City KS 67846
ATTN: Wyatt Urban

29-34s-31w Seward,KS.
Handy #7-29
Job Ticket: 57221 **DST#: 4**
Test Start: 2014.06.09 @ 23:14:00

Tool Information

Drill Pipe:	Length: 5715.00 ft	Diameter: 3.80 inches	Volume: 80.17 bbl	Tool Weight: 2000.00 lb
Heavy Wt. Pipe:	Length: 0.00 ft	Diameter: 0.00 inches	Volume: 0.00 bbl	Weight set on Packer: 28000.00 lb
Drill Collar:	Length: 180.00 ft	Diameter: 2.25 inches	Volume: 0.89 bbl	Weight to Pull Loose: 18000.00 lb
		Total Volume: 81.06 bbl		Tool Chased ft
Drill Pipe Above KB:	14.00 ft			String Weight: Initial 82000.00 lb
Depth to Top Packer:	5908.00 ft			Final 82000.00 lb
Depth to Bottom Packer:	ft			
Interval between Packers:	38.00 ft			
Tool Length:	65.00 ft			
Number of Packers:	2	Diameter: 6.75 inches		

Tool Comments:

Tool Description	Length (ft)	Serial No.	Position	Depth (ft)	Accum. Lengths
-------------------------	--------------------	-------------------	-----------------	-------------------	-----------------------

Change Over Sub	1.00			5882.00	
Shut In Tool	5.00			5887.00	
Hydraulic tool	5.00			5892.00	
Jars	5.00			5897.00	
Safety Joint	2.00			5899.00	
Packer	5.00			5904.00	27.00 Bottom Of Top Packer
Packer	4.00			5908.00	
Stubb	1.00			5909.00	
Perforations	3.00			5912.00	
Recorder	0.00	8355	Outside	5912.00	
Recorder	0.00	8674	Inside	5912.00	
Perforations	29.00			5941.00	
Bullnose	5.00			5946.00	38.00 Bottom Packers & Anchor

Total Tool Length: 65.00



**TRILOBITE
TESTING, INC**

DRILL STEM TEST REPORT

FLUID SUMMARY

American Warrior Inc.

29-34s-31w Seward,KS.

PO Box 399
Garden City KS 67846

Handy #7-29

Job Ticket: 57221

DST#: 4

ATTN: Wyatt Urban

Test Start: 2014.06.09 @ 23:14:00

Mud and Cushion Information

Mud Type: Gel Chem
Mud Weight: 9.00 lb/gal
Viscosity: 64.00 sec/qt
Water Loss: 9.93 in³
Resistivity: ohm.m
Salinity: 5600.00 ppm
Filter Cake: 1.00 inches

Cushion Type:
Cushion Length: ft
Cushion Volume: bbl
Gas Cushion Type:
Gas Cushion Pressure: psig

Oil API: deg API
Water Salinity: ppm

Recovery Information

Recovery Table

Length ft	Description	Volume bbl
60.00	GCM 4%g 96%m	0.295
0.00	Never Could Smell the Gas	0.000

Total Length: 60.00 ft Total Volume: 0.295 bbl

Num Fluid Samples: 0

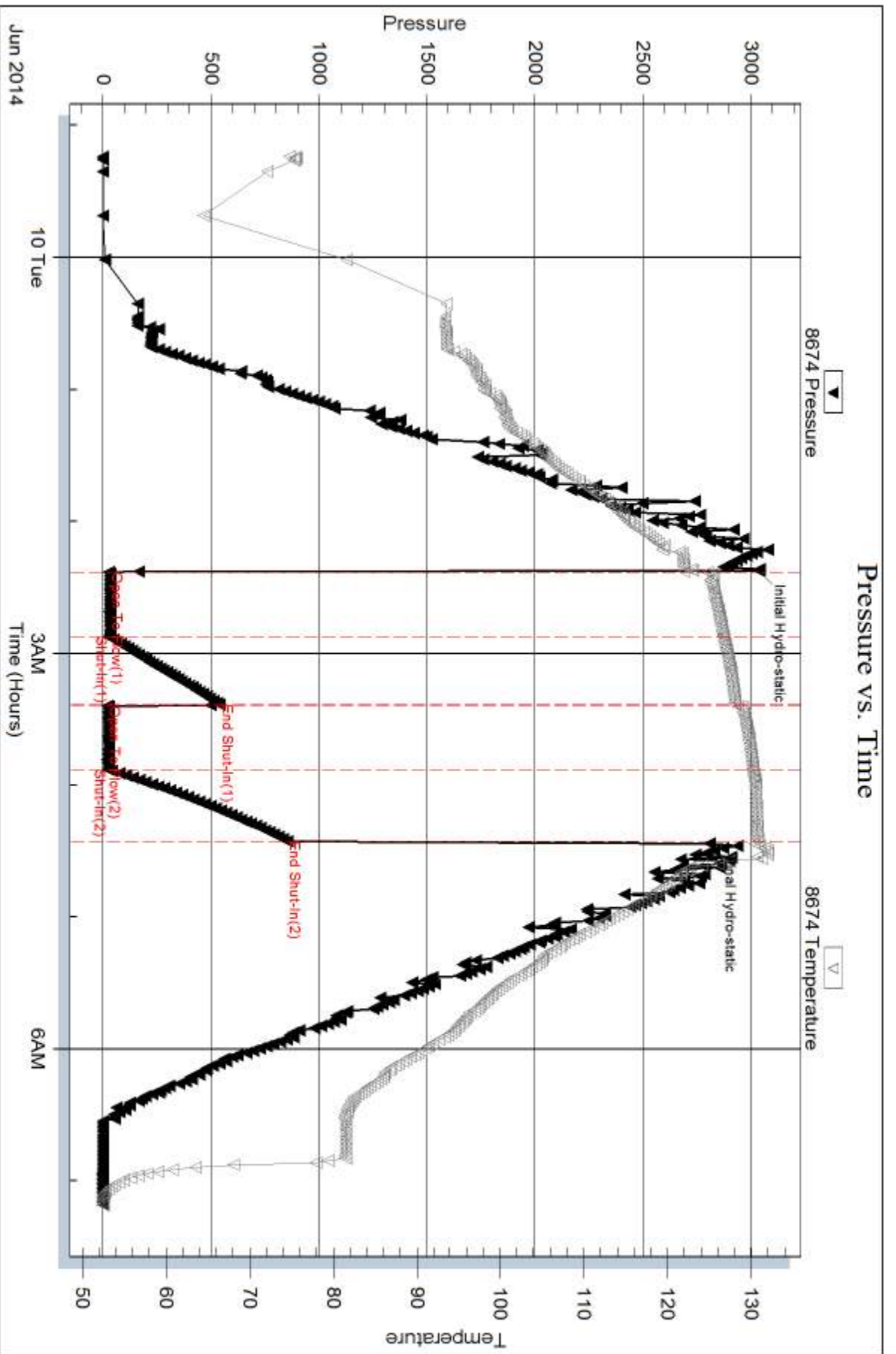
Num Gas Bombs: 0

Serial #:

Laboratory Name:

Laboratory Location:

Recovery Comments:

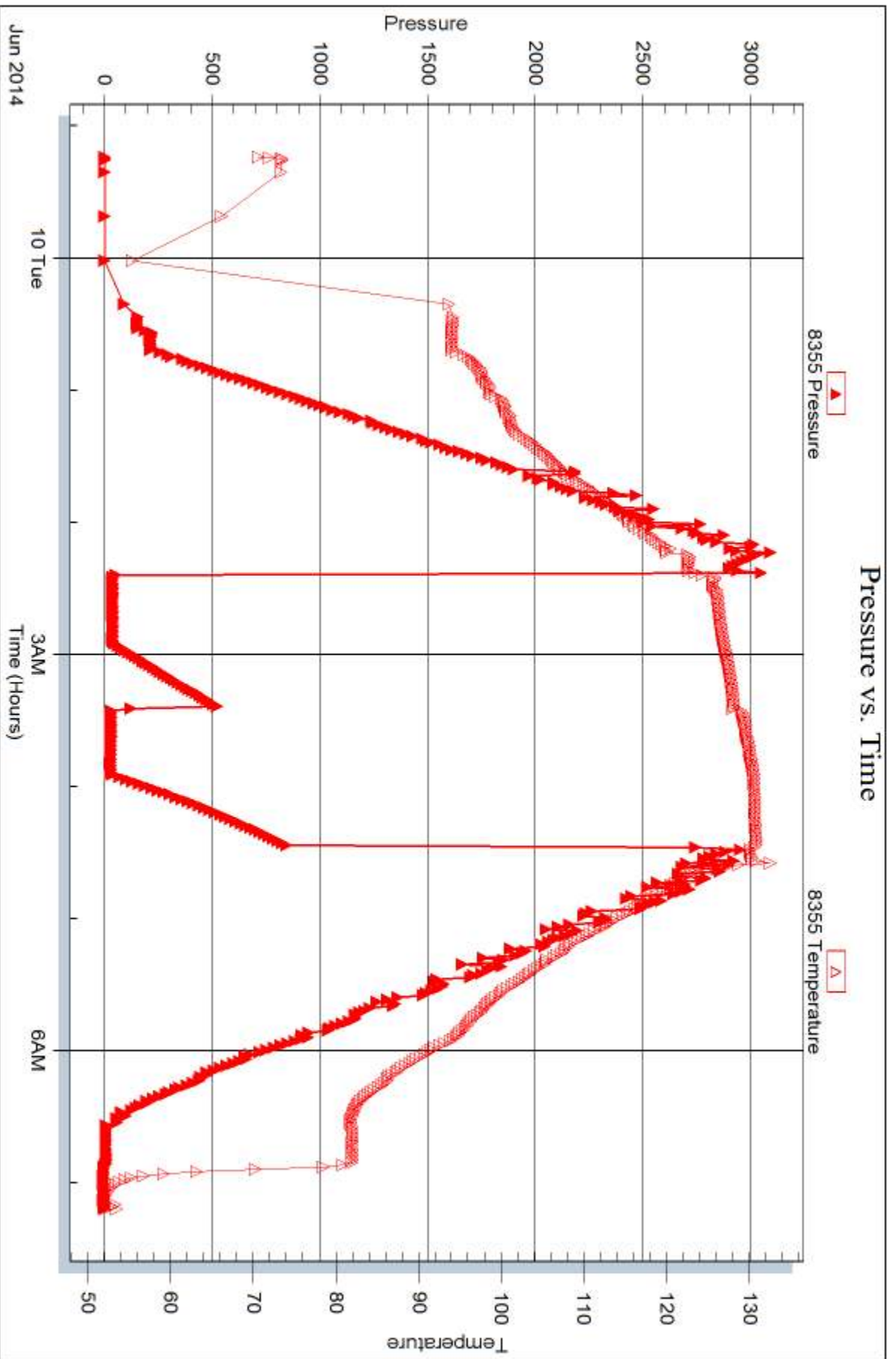


Serial #: 8355

Outside American Warrior Inc.

Handy #7-29

DST Test Number: 4





DRILL STEM TEST REPORT

Prepared For: **American Warrior Inc.**

PO Box 399
Garden City KS 67846

ATTN: Wyatt Urban

Handy #7-29

29-34s-31w Seward,KS.

Start Date: 2014.06.10 @ 17:26:00

End Date: 2014.06.11 @ 06:17:25

Job Ticket #: 57222 DST #: 5

Trilobite Testing, Inc
PO Box 362 Hays, KS 67601
ph: 785-625-4778 fax: 785-625-5620

Printed: 2014.06.12 @ 13:16:56



TRILOBITE TESTING, INC

DRILL STEM TEST REPORT

American Warrior Inc.
 PO Box 399
 Garden City KS 67846
 ATTN: Wyatt Urban

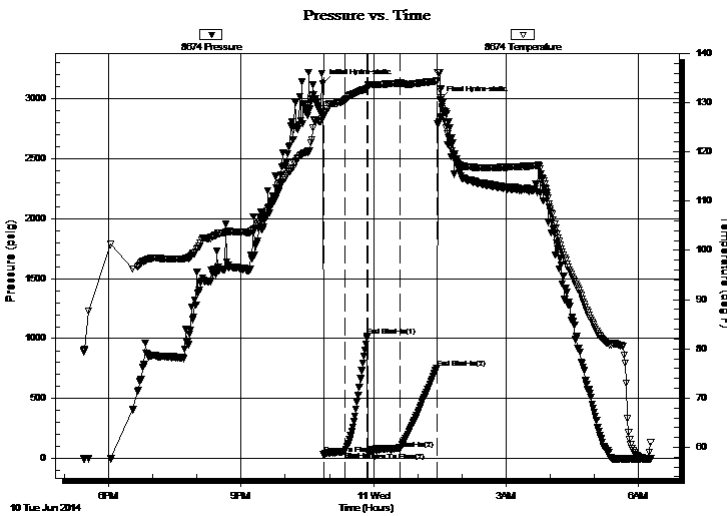
29-34s-31w Seward,KS.
Handy #7-29
 Job Ticket: 57222 **DST#: 5**
 Test Start: 2014.06.10 @ 17:26:00

GENERAL INFORMATION:

Formation: **Chester**
 Deviated: No Whipstock: ft (KB)
 Time Tool Opened: 22:51:54
 Time Test Ended: 06:17:25
 Interval: **5952.00 ft (KB) To 6015.00 ft (KB) (TVD)**
 Total Depth: 6015.00 ft (KB) (TVD)
 Hole Diameter: 7.88 inches Hole Condition: Good
 Test Type: Conventional Bottom Hole (Reset)
 Tester: Will MacLean
 Unit No: 72
 Reference Elevations: 2735.00 ft (KB)
 2722.00 ft (CF)
 KB to GR/CF: 13.00 ft

Serial #: 8674 Inside
 Press@RunDepth: 81.67 psig @ 5953.00 ft (KB) Capacity: 8000.00 psig
 Start Date: 2014.06.10 End Date: 2014.06.11 Last Calib.: 2014.06.11
 Start Time: 17:26:00 End Time: 06:17:25 Time On Btm: 2014.06.10 @ 22:51:09
 Time Off Btm: 2014.06.11 @ 01:30:54

TEST COMMENT: IF- Weak Surface Blow Built to BOB in 27 1/2 min
 IS- No Blow
 FF- Surface Blow Built to BOB in 1 3/4 min Died Back to 7" Built Back to BOB
 FS- No Blow



PRESSURE SUMMARY

Time (Min.)	Pressure (psig)	Temp (deg F)	Annotation
0	3121.70	127.64	Initial Hydro-static
1	33.62	127.15	Open To Flow (1)
31	62.71	130.61	Shut-In(1)
61	1022.53	132.86	End Shut-In(1)
61	52.33	133.12	Open To Flow (2)
106	81.67	134.01	Shut-In(2)
155	754.09	134.37	End Shut-In(2)
160	2985.97	132.61	Final Hydro-static

Recovery

Length (ft)	Description	Volume (bbl)
60.00	GWCM 7%g 26%w 67%m	0.30
90.00	GWCM 3%g 4%w 93%m	0.44
0.00	282' of Weak GIP	0.00

* Recovery from multiple tests

Gas Rates

	Choke (inches)	Pressure (psig)	Gas Rate (Mcf/d)



**TRILOBITE
TESTING, INC**

DRILL STEM TEST REPORT

American Warrior Inc.
PO Box 399
Garden City KS 67846
ATTN: Wyatt Urban

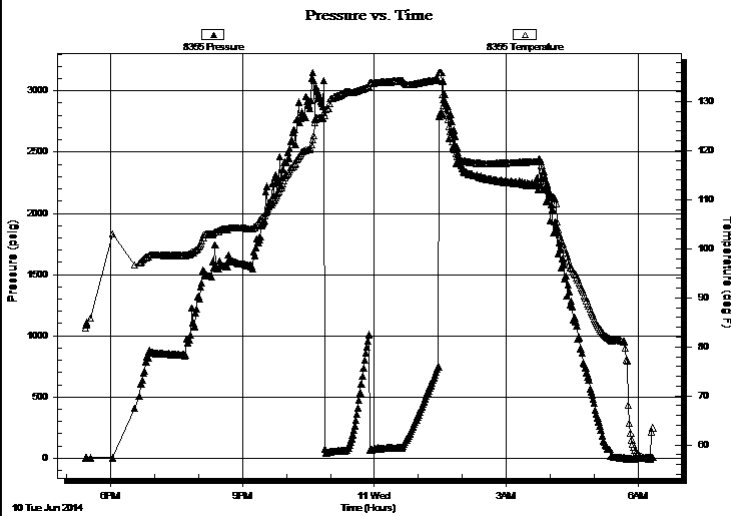
29-34s-31w Seward,KS.
Handy #7-29
Job Ticket: 57222 **DST#: 5**
Test Start: 2014.06.10 @ 17:26:00

GENERAL INFORMATION:

Formation: **Chester**
Deviated: No Whipstock: ft (KB)
Time Tool Opened: 22:51:54
Time Test Ended: 06:17:25
Interval: **5952.00 ft (KB) To 6015.00 ft (KB) (TVD)**
Total Depth: 6015.00 ft (KB) (TVD)
Hole Diameter: 7.88 inches Hole Condition: Good
Test Type: Conventional Bottom Hole (Reset)
Tester: Will MacLean
Unit No: 72
Reference Elevations: 2735.00 ft (KB)
2722.00 ft (CF)
KB to GR/CF: 13.00 ft

Serial #: 8355 Outside
Press@RunDepth: psig @ 5953.00 ft (KB) Capacity: 8000.00 psig
Start Date: 2014.06.10 End Date: 2014.06.11 Last Calib.: 2014.06.11
Start Time: 17:26:05 End Time: 06:19:45 Time On Btm:
Time Off Btm:

TEST COMMENT: IF- Weak Surface Blow Built to BOB in 27 1/2 min
IS- No Blow
FF- Surface Blow Built to BOB in 1 3/4 min Died Back to 7" Built Back to BOB
FS- No Blow



PRESSURE SUMMARY

Time (Min.)	Pressure (psig)	Temp (deg F)	Annotation

Recovery

Length (ft)	Description	Volume (bbl)
60.00	GWCM 7%g 26%w 67%m	0.30
90.00	GWCM 3%g 4%w 93%m	0.44
0.00	282' of Weak GIP	0.00

* Recovery from multiple tests

Gas Rates

	Choke (inches)	Pressure (psig)	Gas Rate (Mcf/d)



**TRILOBITE
TESTING, INC**

DRILL STEM TEST REPORT

TOOL DIAGRAM

American Warrior Inc.
PO Box 399
Garden City KS 67846
ATTN: Wyatt Urban

29-34s-31w Seward,KS.
Handy #7-29
Job Ticket: 57222 **DST#: 5**
Test Start: 2014.06.10 @ 17:26:00

Tool Information

Drill Pipe:	Length: 5777.00 ft	Diameter: 3.80 inches	Volume: 81.04 bbl	Tool Weight:	2000.00 lb
Heavy Wt. Pipe:	Length: 0.00 ft	Diameter: 0.00 inches	Volume: 0.00 bbl	Weight set on Packer:	30000.00 lb
Drill Collar:	Length: 180.00 ft	Diameter: 2.25 inches	Volume: 0.89 bbl	Weight to Pull Loose:	32000.00 lb
			<u>Total Volume: 81.93 bbl</u>	Tool Chased	ft
Drill Pipe Above KB:	32.00 ft			String Weight: Initial	82000.00 lb
Depth to Top Packer:	5952.00 ft			Final	82000.00 lb
Depth to Bottom Packer:	ft				
Interval between Packers:	63.00 ft				
Tool Length:	90.00 ft				
Number of Packers:	2	Diameter:	6.75 inches		

Tool Comments:

Tool Description

Length (ft) Serial No. Position Depth (ft) Accum. Lengths

Tool Description	Length (ft)	Serial No.	Position	Depth (ft)	Accum. Lengths
Change Over Sub	1.00			5926.00	
Shut In Tool	5.00			5931.00	
Hydraulic tool	5.00			5936.00	
Jars	5.00			5941.00	
Safety Joint	2.00			5943.00	
Packer	5.00			5948.00	27.00 Bottom Of Top Packer
Packer	4.00			5952.00	
Stubb	1.00			5953.00	
Recorder	0.00	8355	Outside	5953.00	
Recorder	0.00	8674	Inside	5953.00	
Perforations	24.00			5977.00	
Change Over Sub	1.00			5978.00	
Drill Pipe	31.00			6009.00	
Change Over Sub	1.00			6010.00	
Bullnose	5.00			6015.00	63.00 Bottom Packers & Anchor

Total Tool Length: 90.00



**TRILOBITE
TESTING, INC**

DRILL STEM TEST REPORT

FLUID SUMMARY

American Warrior Inc.
PO Box 399
Garden City KS 67846
ATTN: Wyatt Urban

29-34s-31w Seward,KS.
Handy #7-29
Job Ticket: 57222 **DST#: 5**
Test Start: 2014.06.10 @ 17:26:00

Mud and Cushion Information

Mud Type: Gel Chem	Cushion Type:	Oil API:	deg API
Mud Weight: 9.00 lb/gal	Cushion Length: ft	Water Salinity:	15200 ppm
Viscosity: 77.00 sec/qt	Cushion Volume: bbl		
Water Loss: 11.14 in ³	Gas Cushion Type:		
Resistivity: ohm.m	Gas Cushion Pressure: psig		
Salinity: 5400.00 ppm			
Filter Cake: 1.00 inches			

Recovery Information

Recovery Table

Length ft	Description	Volume bbl
60.00	GWCM 7%g 26%w 67%m	0.295
90.00	GWCM 3%g 4%w 93%m	0.443
0.00	282' of Weak GIP	0.000

Total Length: 150.00 ft Total Volume: 0.738 bbl
 Num Fluid Samples: 0 Num Gas Bombs: 0 Serial #:
 Laboratory Name: Laboratory Location:
 Recovery Comments: RW is .421 @ 68f = 15200

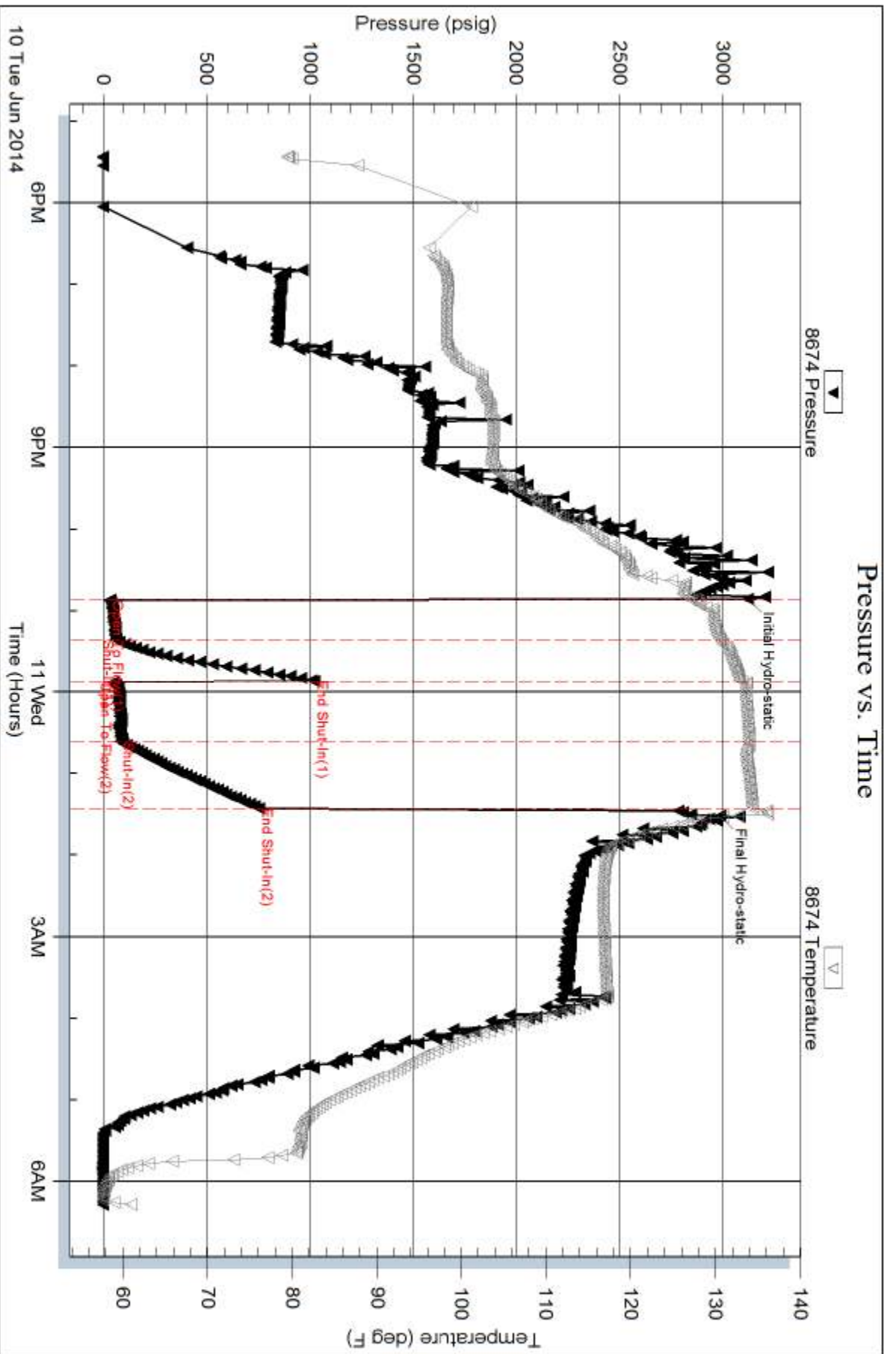
Serial #: 8674

Inside

American Warrior Inc.

Handy #7-29

DST Test Number: 5



Triobite Testing, Inc

Ref. No: 57222

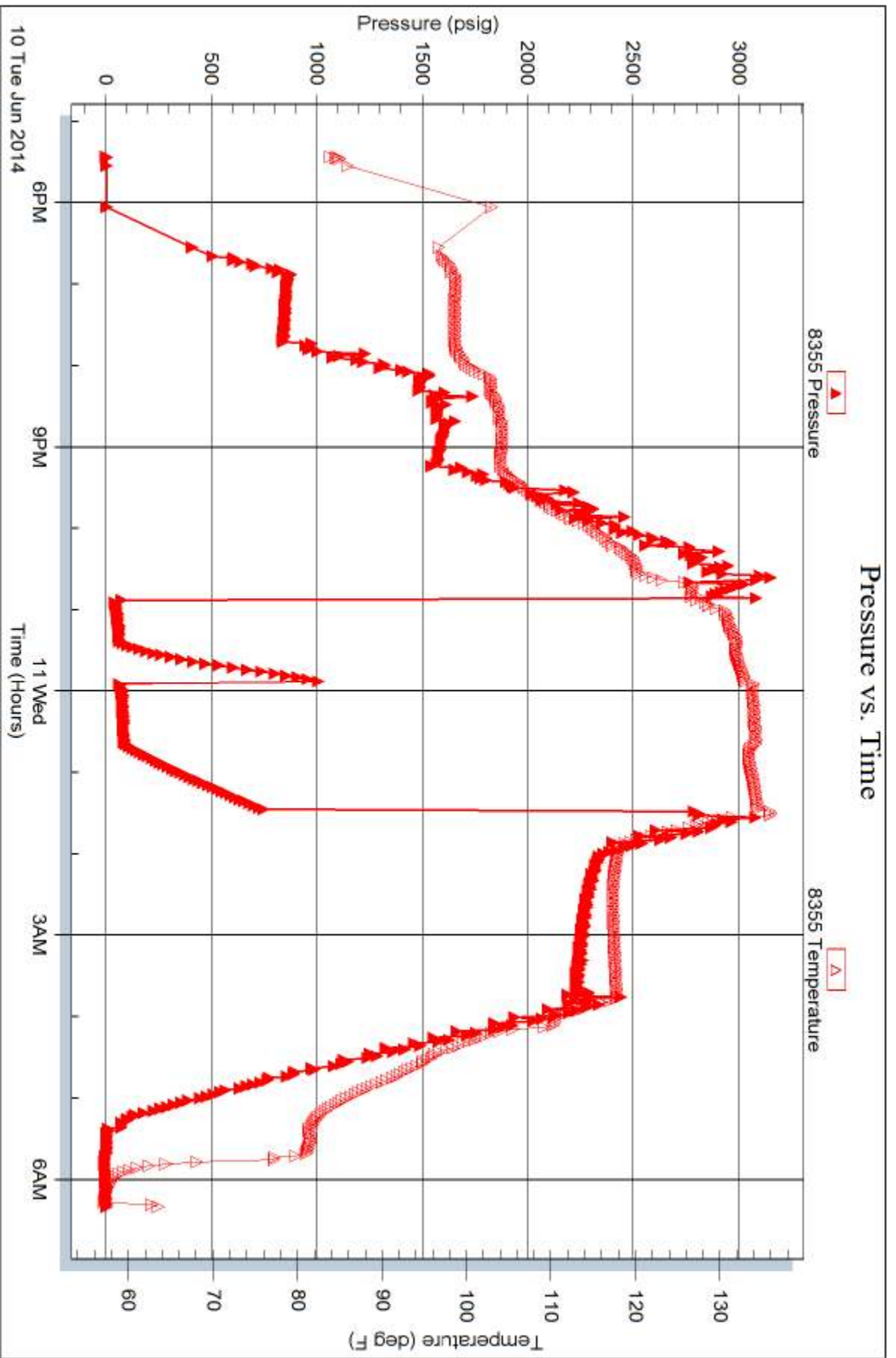
Printed: 2014.06.12 @ 13:16:57

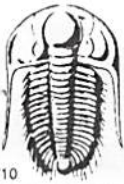
Serial #: 8355

Outside American Warrior Inc.

Handy #7-29

DST Test Number: 5





TRILOBITE TESTING INC.

1515 Commerce Parkway • Hays, Kansas 67601

Test Ticket

NO. 57218

Well Name & No. Handy # 7-29 Test No. DST #1 Date 6-3-14
 Company American Warrior Inc Elevation 2735 KB 2722 GL
 Address P.O. Box 399 Garden City KS 67846
 Co. Rep / Geo. Wyatt Urban Rig Duke #9
 Location: Sec. 29 Twp. 34s Rge. 3W Co. Seward State KS

Interval Tested 4390 - 4447 Zone Tested Toronto
 Anchor Length 57 Drill Pipe Run 4199 Mud Wt. 9.0
 Top Packer Depth 4386 Drill Collars Run 180 Vis 50
 Bottom Packer Depth 4390 Wt. Pipe Run 0 WL 10.2
 Total Depth 4447 Chlorides 4000 ppm System LCM

Blow Description IF-Surface Blow Built to BOB in 45 sec Gas to Surface in 18 min to Well to 1000
ISJ-Weak Surface Blow Built to BOB in 2 3/4 min Drill Back to 8"
FF-Surface Blow Built to BOB in 1 min
FST-Weak Surface Blow Built to BOB in 2 min

Rec	Feet of	%gas	%oil	%water	%mud
10	OGCM	14	8		80
378	GOWCM	8	12	24	56
63	MGVCO	10	65	18	7
189	MWOCG	45	30	21	4
243	OGMCW	4	3	84	9

Rec Total 883 BHT 115 Gravity API RW 274 @ 89 °F Chlorides 18,100 ppm

- (A) Initial Hydrostatic 2222
- (B) First Initial Flow 126
- (C) First Final Flow 215
- (D) Initial Shut-In 792
- (E) Second Initial Flow 229
- (F) Second Final Flow 378
- (G) Final Shut-In 805
- (H) Final Hydrostatic 2193

Initial Open 30
 Initial Shut-In 30
 Final Flow 45
 Final Shut-In 45

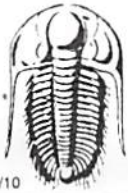
- Test 1250
- Jars 250
- Safety Joint 75
- Circ Sub NIC
- Hourly Standby
- Mileage 246 RIT 381.30
- Sampler
- Straddle
- Shale Packer 250
- Extra Packer
- Extra Recorder
- Day Standby
- Accessibility
- Sub Total 2206.30

T-On Location 6:32
 T-Started 7:14
 T-Open 9:08
 T-Pulled
 T-Out 14:35

Comments Motel
3455 GIP
Gas tests Weak to Gause
 Ruined Shale Packer
 Ruined Packer
 Extra Copies
 Sub Total 0
 Total 2206.30
 MP/DST Disc't

Approved By _____ Our Representative _____

Trilobite Testing Inc. shall not be liable for damaged of any kind of the property or personnel of the one for whom a test is made, or for any loss suffered or sustained, directly or indirectly, through the use of its equipment, or its statements or opinion concerning the results of any test, tools lost or damaged in the hole shall be paid for at cost by the party for whom the test is made.



TRILOBITE TESTING INC.

1515 Commerce Parkway • Hays, Kansas 67601

Test Ticket

NO. 57219

Well Name & No. Handy # 7-29 Test No. DST #2 Date 6-6-14
 Company American Warrior Inc Elevation 2735 KB 2722 GL
 Address P.O. Box 399 Garden City KS 67846
 Co. Rep / Geo. Wyatt Urban Rig Duke #9
 Location: Sec. 29 Twp. 34s Rge. 31W Co. Seward State KS

Interval Tested 5307-5350 Zone Tested Marmanton
 Anchor Length 43 Drill Pipe Run 5116 Mud Wt. 9.3
 Top Packer Depth 5303 Drill Collars Run 180 Vis 56
 Bottom Packer Depth 5307 Wt. Pipe Run 0 WL 9.2
 Total Depth 5350 Chlorides 3800 ppm System LCM 3/6

Blow Description IF - Strong Surface Blow Built to BOB in 20 sec
BT - Surface Blow Built to BOB in 1 1/2 min
FF - Strong Surface Blow Built to BOB in 12 sec
FST - Well Surface Blow Built to BOB in 3 1/4 min

Rec	Feet of	%gas	%oil	%water	%mud
<u>31</u>	<u>0' WCM</u>	<u>8</u>	<u>2</u>	<u>20</u>	<u>70</u>
<u>63</u>	<u>0' MWCC</u>	<u>43</u>	<u>7</u>	<u>29</u>	<u>21</u>
<u>2330</u>	<u>Blow Out + Drapped Bar</u>				
<u>120</u>	<u>MCW</u>			<u>97</u>	<u>3</u>
	<u>2740' of GIP</u>				

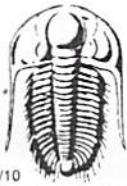
Rec Total 2544 BHT 129 Gravity _____ API RW 214 @ 89 °F Chlorides 24000 ppm

(A) Initial Hydrostatic 2598 Test 1350 T-On Location 6:44
 (B) First Initial Flow 318 Jars 250 T-Started 8:30
 (C) First Final Flow 825 Safety Joint 75 T-Open 15:48
 (D) Initial Shut-In 1529 Circ Sub Dropped Bar 50 T-Pulled 18:21
 (E) Second Initial Flow 871 3h 300 Part on Elevator's T-Out 22:31
 (F) Second Final Flow 1245 Hourly Standby from 9:30 AM to 2:00 PM Comments _____
 (G) Final Shut-In 1563 Mileage 246 R/T 381.30
 (H) Final Hydrostatic 2571 Sampler _____ Just Gas came out after
 Straddle _____ Dropping the Bar
 Shale Packer _____ Ruined Shale Packer _____
 Extra Packer _____ Ruined Packer _____

Initial Open 36 Extra Recorder _____ Sub Total 1341.67
 Initial Shut-In 30 Day Standby 2d 16.25h Total 3747.97
 Final Flow 45 Accessibility _____ MP/DST Disc't _____
 Final Shut-In 45 Sub Total 2406.30

Approved By _____ Our Representative J. M. Moore

Trilobite Testing Inc. shall not be liable for damaged of any kind of the property or personnel of the one for whom a test is made, or for any loss suffered or sustained, directly or indirectly, through the use of its equipment, or its statements or opinion concerning the results of any test, tools lost or damaged in the hole shall be paid for at cost by the party for whom the test is made.



TRILOBITE TESTING INC.

1515 Commerce Parkway • Hays, Kansas 67601

Test Ticket

NO. 57220

4/10

Well Name & No. Handy # 7-29 Test No. DST # 3 Date 6-8-14
 Company American Warrior Inc Elevation 2735 KB 2722 GL
 Address P.O. Box 399 Garden City KS 67846
 Co. Rep / Geo. Wyatt Urban Rig Duke 9
 Location: Sec. 29 Twp. 34s Rge. 31w Co. Seward State KS

Interval Tested 5766-5848 Zone Tested Morrow Sand
 Anchor Length 82 Drill Pipe Run 5590 Mud Wt. 9.4
 Top Packer Depth 5762 Drill Collars Run 180 Vis 57
 Bottom Packer Depth 5766 Wt. Pipe Run 0 WL 9.2
 Total Depth 5848 Chlorides 5700 ppm System LCM 3/6
 Blow Description IF- Weak Surface Blow Built to 34
IST- No Blow
FF- No Blow
FST - No Blow

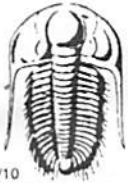
Rec	Feet of	%gas	%oil	%water	%mud
<u>10</u>	<u>Mud</u>			<u>100</u>	
Rec	Feet of	%gas	%oil	%water	%mud
Rec	Feet of	%gas	%oil	%water	%mud
Rec	Feet of	%gas	%oil	%water	%mud

Rec Total 10 BHT 129 Gravity _____ API RW _____ @ _____ °F Chlorides _____ ppm

(A) Initial Hydrostatic <u>2961</u>	<input checked="" type="checkbox"/> Test <u>1350</u>	T-On Location <u>22:08</u>
(B) First Initial Flow <u>32</u>	<input checked="" type="checkbox"/> Jars <u>250</u>	T-Started <u>23:34</u>
(C) First Final Flow <u>78</u>	<input checked="" type="checkbox"/> Safety Joint <u>75</u>	T-Open <u>2:24</u>
(D) Initial Shut-In <u>102</u>	<input checked="" type="checkbox"/> Circ Sub <u>NIC</u>	T-Pulled <u>4:58</u>
(E) Second Initial Flow <u>62</u>	<input type="checkbox"/> Hourly Standby _____	T-Out <u>7:36</u>
(F) Second Final Flow <u>87</u>	<input checked="" type="checkbox"/> Mileage <u>246 R/T</u> 381.30	Comments <u>Mud</u>
(G) Final Shut-In <u>100</u>	<input type="checkbox"/> Sampler _____	
(H) Final Hydrostatic <u>2962</u>	<input type="checkbox"/> Straddle _____	<input type="checkbox"/> Ruined Shale Packer _____
	<input type="checkbox"/> Shale Packer _____	<input type="checkbox"/> Ruined Packer _____
Initial Open <u>30</u>	<input type="checkbox"/> Extra Packer _____	<input type="checkbox"/> Extra Copies _____
Initial Shut-In <u>30</u>	<input type="checkbox"/> Extra Recorder _____	Sub Total <u>791.67</u>
Final Flow <u>45</u>	<input checked="" type="checkbox"/> Day Standby <u>1d 23.25h</u>	Total <u>2847.97</u>
Final Shut-In <u>45</u>	<input type="checkbox"/> Accessibility _____	MP/DST Disc't _____
	Sub Total <u>2056.30</u>	

Approved By _____ Our Representative _____

Trilobite Testing Inc. shall not be liable for damaged of any kind of the property or personnel of the one for whom a test is made, or for any loss suffered or sustained, directly or indirectly, through the use of its equipment, or its statements or opinion concerning the results of any test, tools lost or damaged in the hole shall be paid for at cost by the party for whom the test is made.



TRILOBITE TESTING INC.

1515 Commerce Parkway • Hays, Kansas 67601

Test Ticket

NO. 57221

Well Name & No. Handy # 7-29 Test No. DST #4 Date 6-9-14
 Company American Warrior Inc Elevation 2735 KB 2722 GL
 Address PO Box 399 Garden City KS 67846
 Co. Rep / Geo. Wyatt Urban Rig Duke 9
 Location: Sec. 29 Twp. 34S Rge. 31W Co. Seward State KS

Interval Tested 5908-5946 Zone Tested Upper Chester
 Anchor Length 38 Drill Pipe Run 5715 Mud Wt. 9.3
 Top Packer Depth 5904 Drill Collars Run 180 Vis 64
 Bottom Packer Depth 5908 Wt. Pipe Run 0 WL 10.0
 Total Depth 5946 Chlorides 5600 ppm System LCM 282

Blow Description IF Strong Surface Blow Built to BOB in 20 sec Died Back to 5" Built Back to BOB in 24 sec
ISI - No Blow
FF - Strong Surface Blow Built to BOB in 8 sec Died Back to 7 1/2" Built Back to BOB in 9 sec
FSI - No Blow

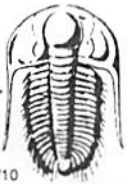
Rec	Feet of	%gas	%oil	%water	%mud
<u>60</u>	<u>0-60</u>	<u>4</u>		<u>96</u>	
Rec	Feet of	%gas	%oil	%water	%mud
Rec	Feet of	%gas	%oil	%water	%mud
Rec	Feet of	%gas	%oil	%water	%mud
Rec	Feet of	%gas	%oil	%water	%mud

Rec Total _____ BHT _____ Gravity _____ API RW _____ @ _____ °F Chlorides _____ ppm

(A) Initial Hydrostatic <u>3036</u>	<input checked="" type="checkbox"/> Test <u>1350</u>	T-On Location <u>22:04</u>
(B) First Initial Flow <u>26</u>	<input checked="" type="checkbox"/> Jars <u>250</u>	T-Started <u>23:14</u>
(C) First Final Flow <u>29</u>	<input checked="" type="checkbox"/> Safety Joint <u>75</u>	T-Open <u>2:23</u>
(D) Initial Shut-In <u>539</u>	<input checked="" type="checkbox"/> Circ Sub <u>NIC</u>	T-Pulled _____
(E) Second Initial Flow <u>18</u>	<input type="checkbox"/> Hourly Standby _____	T-Out <u>7:10</u>
(F) Second Final Flow <u>22</u>	<input checked="" type="checkbox"/> Mileage <u>246 RIT</u> 381.30	Comments <u>Motel</u>
(G) Final Shut-In <u>851</u>	<input type="checkbox"/> Sampler _____	<u>Never could smell the gas in pipe</u>
(H) Final Hydrostatic <u>2809</u>	<input type="checkbox"/> Straddle _____	<input checked="" type="checkbox"/> Ruined Shale Packer <u>350</u>
Initial Open <u>30</u>	<input checked="" type="checkbox"/> Shale Packer <u>250</u>	<input type="checkbox"/> Ruined Packer _____
Initial Shut-In <u>30</u>	<input type="checkbox"/> Extra Packer _____	<input type="checkbox"/> Extra Copies _____
Final Flow <u>30</u>	<input type="checkbox"/> Extra Recorder _____	Sub Total <u>0</u>
Final Shut-In <u>30</u>	<input type="checkbox"/> Day Standby _____	Total <u>2656.30</u>
	<input type="checkbox"/> Accessibility _____	MP/DST Disc't _____
	Sub Total <u>2306.30</u>	

Approved By _____ Our Representative Mik M

Trilobite Testing Inc. shall not be liable for damaged of any kind of the property or personnel of the one for whom a test is made, or for any loss suffered or sustained, directly or indirectly, through the use of its equipment, or its statements or opinion concerning the results of any test, tools lost or damaged in the hole shall be paid for at cost by the party for whom the test is made.



TRILOBITE TESTING INC.

1515 Commerce Parkway • Hays, Kansas 67601

Test Ticket

NO. 57222

Well Name & No. Handy #7-29 Test No. DST #5 Date 6-10-14
 Company American Warrior Inc Elevation 2735 KB 2722 GL
 Address P.O. Box 399 Garden City KS 67846
 Co. Rep / Geo. Wyst Urban Rig Duke 9
 Location: Sec. 29 Twp. 34S Rge. 31W Co. Seward State KS

Interval Tested 5952-6015 Zone Tested Chester
 Anchor Length 63 Drill Pipe Run 5777 Mud Wt. 9.2
 Top Packer Depth 5948 Drill Collars Run 180 Vis 77
 Bottom Packer Depth 5952 Wt. Pipe Run 0 WL 11.2
 Total Depth 6015 Chlorides 5400 ppm System LCM 216

Blow Description IF- Weak Surface Blow Built to BOP in 27 1/2 min
ISI- No Blow
FF- Surface Blow Built to BOP in 1 3/4 min Died Back to 7" Built Back to BOP
FSI- No Blow

Rec	Feet of	%gas	%oil	%water	%mud
<u>90</u>	<u>GWCM</u>	<u>3</u>		<u>4</u>	<u>93</u>
<u>60</u>	<u>GWCM</u>	<u>7</u>		<u>26</u>	<u>67</u>
	<u>282' Weak G-IP</u>				

Rec Total 150 BHT 135 Gravity _____ API RW 421 @ 68 °F Chlorides 151200 ppm

(A) Initial Hydrostatic <u>3121</u>	<input checked="" type="checkbox"/> Test <u>1450</u>	T-On Location <u>16:34</u>
(B) First Initial Flow <u>33</u>	<input checked="" type="checkbox"/> Jars <u>250</u>	T-Started <u>17:26</u>
(C) First Final Flow <u>62</u>	<input checked="" type="checkbox"/> Safety Joint <u>75</u>	T-Open <u>22:51</u>
(D) Initial Shut-In <u>1022</u>	<input checked="" type="checkbox"/> Circ Sub <u>N/C</u>	T-Pulled <u>1:30</u>
(E) Second Initial Flow <u>52</u>	<input checked="" type="checkbox"/> Hourly Standby <u>Rig Reports .75h</u>	T-Out <u>6:17</u>
(F) Second Final Flow <u>81</u>	<input checked="" type="checkbox"/> Mileage <u>246 R/T X2</u>	Comments <u>Motel</u>
(G) Final Shut-In <u>754</u>	<input type="checkbox"/> Sampler <u>762.60</u>	<u>Work on Rig 2:00-3:45</u>
(H) Final Hydrostatic <u>2985</u>	<input type="checkbox"/> Straddle _____	<u>cathead</u>

Initial Open <u>30</u>	<input type="checkbox"/> Shale Packer _____	<input type="checkbox"/> Ruined Shale Packer _____
Initial Shut-In <u>30</u>	<input type="checkbox"/> Extra Packer _____	<input type="checkbox"/> Ruined Packer _____
Final Flow <u>45</u>	<input type="checkbox"/> Extra Recorder _____	Sub Total <u>0</u>
Final Shut-In <u>45</u>	<input type="checkbox"/> Day Standby _____	Total <u>2612.60</u>
	<input type="checkbox"/> Accessibility _____	MP/DST Disc't _____
	Sub Total <u>2612.60</u>	

Approved By _____ Our Representative NW

Trilobite Testing Inc. shall not be liable for damaged of any kind of the property or personnel of the one for whom a test is made, or for any loss suffered or sustained, directly or indirectly, through the use of its equipment, or its statements or opinion concerning the results of any test, tools lost or damaged in the hole shall be paid for at cost by the party for whom the test is made.