



**TRILOBITE  
TESTING, INC.**

# DRILL STEM TEST REPORT

Vincent Oil Corporation  
155 N Market STE 300  
Wichita KS, 67202 - 1821  
ATTN: Jim Hall

**5-28s-23w Ford Co, KS**  
**Frey #1-5**  
Job Ticket: 56458      **DST#: 1**  
Test Start: 2014.03.28 @ 13:00:00

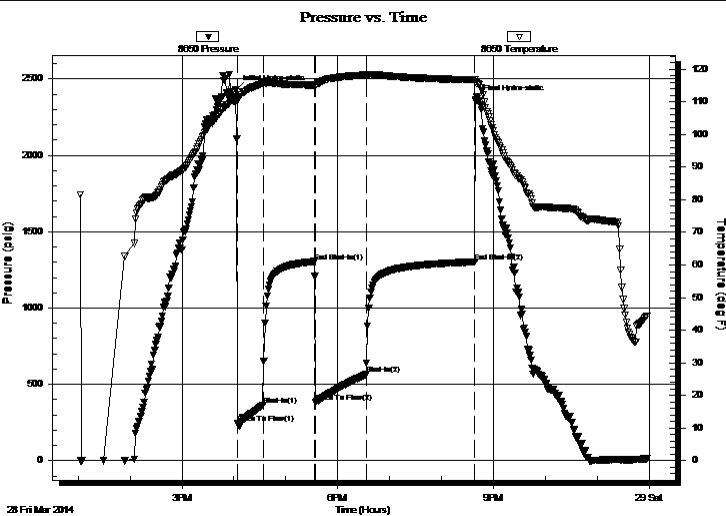
## GENERAL INFORMATION:

Formation: **Pawnee**  
Deviated: No Whipstock: ft (KB)  
Time Tool Opened: 16:04:15  
Time Test Ended: 23:57:15  
Interval: **4912.00 ft (KB) To 4940.00 ft (KB) (TVD)**  
Total Depth: 4940.00 ft (KB) (TVD)  
Hole Diameter: 7.88 inches Hole Condition: Poor  
Test Type: Conventional Bottom Hole (Initial)  
Tester: Jace McKinney  
Unit No: 75  
Reference Elevations: 2503.00 ft (KB)  
2491.00 ft (CF)  
KB to GR/CF: 12.00 ft

## Serial #: 8650

Press @ Run Depth: 568.05 psig @ ft (KB) Capacity: 8000.00 psig  
Start Date: 2014.03.28 End Date: 2014.03.28 Last Calib.: 2014.03.29  
Start Time: 13:02:45 End Time: 23:57:15 Time On Btm: 2014.03.28 @ 16:02:45  
Time Off Btm: 2014.03.28 @ 20:40:00

TEST COMMENT: B.O.B. in 30 sec.  
Bled off for 5 min. B.O.B. in 17 min.  
B.O.B. in 8 min.  
Bled off for 5 min. B.O.B. in 20 min.



## PRESSURE SUMMARY

Time (Min.)	Pressure (psig)	Temp (deg F)	Annotation
0	2428.75	110.13	Initial Hydro-static
2	243.09	110.18	Open To Flow (1)
31	364.72	115.66	Shut-In(1)
91	1305.12	115.08	End Shut-In(1)
92	383.89	114.82	Open To Flow (2)
151	568.05	118.36	Shut-In(2)
276	1302.46	116.72	End Shut-In(2)
278	2363.07	115.78	Final Hydro-static

## Recovery

Length (ft)	Description	Volume (bbl)
234.00	gcm 5%G 95%M	3.28
189.00	mcg 40%M 60%G	2.65
189.00	mcw og 10%M 10%W 40%O 40%G	2.65
63.00	mcw og 20%M 20%W 30%G 30%O	0.88
63.00	mcw g 20%M 40%W 40%G	0.88
378.00	100% Water	5.30

## Gas Rates

Choke (inches)	Pressure (psig)	Gas Rate (Mcf/d)



**TRILOBITE  
TESTING, INC.**

# DRILL STEM TEST REPORT

**FLUID SUMMARY**

Vincent Oil Corporation  
155 N Market STE 300  
Wichita KS, 67202 - 1821  
ATTN: Jim Hall

**5-28s-23w Ford Co, KS**  
**Frey #1-5**  
Job Ticket: 56458      **DST#: 1**  
Test Start: 2014.03.28 @ 13:00:00

## Mud and Cushion Information

Mud Type: Gel Chem	Cushion Type:	Oil API:	deg API
Mud Weight: 9.00 lb/gal	Cushion Length: ft	Water Salinity:	ppm
Viscosity: 48.00 sec/qt	Cushion Volume: bbl		
Water Loss: 9.58 in <sup>3</sup>	Gas Cushion Type:		
Resistivity: ohm.m	Gas Cushion Pressure: psig		
Salinity: 7900.00 ppm			
Filter Cake: 2.00 inches			

## Recovery Information

Recovery Table

Length ft	Description	Volume bbl
234.00	gcm 5%G 95%M	3.282
189.00	mcg 40%M 60%G	2.651
189.00	mcw og 10%M 10%W 40%O 40%G	2.651
63.00	mcw og 20%M 20%W 30%G 30%O	0.884
63.00	mcw g 20%M 40%W 40%G	0.884
378.00	100% Water	5.302
0.00	3354 Feet Weak Gas In Pipe	0.000

Total Length: 1116.00 ft      Total Volume: 15.654 bbl  
 Num Fluid Samples: 0      Num Gas Bombs: 0      Serial #:  
 Laboratory Name:      Laboratory Location:  
 Recovery Comments: RW: .2 @ 40 F = 50,000

3354 Feet Weak Gas In Pipe

