



**TRILOBITE
TESTING, INC**

DRILL STEM TEST REPORT

Samuel gary jr. & assoc. inc

SEC. 14 - 15 s. - 16 w./ ELLIS

1515 WYNKOOP STE. 700
DENVER CO.
80202
ATTN: CHRIS MITCHELL

Murphy # 2-14

Job Ticket: 56169

DST#: 1

Test Start: 2014.03.26 @ 13:40:00

GENERAL INFORMATION:

Formation: **L.K.C. " F "**

Deviated: No Whipstock: ft (KB)

Time Tool Opened: 15:55:23

Time Test Ended: 21:46:53

Test Type: Conventional Bottom Hole (Initial)

Tester: Bob Hamel

Unit No: 67

Interval: 3247.00 ft (KB) To 3271.00 ft (KB) (TVD)

Reference Elevations: 1922.00 ft (KB)

Total Depth: 3271.00 ft (KB) (TVD)

1914.00 ft (CF)

Hole Diameter: 7.88 inches Hole Condition: Fair

KB to GR/CF: 8.00 ft

Serial #: 8679

Inside

Press@RunDepth: 77.51 psig @ 3248.00 ft (KB)

Capacity: 8000.00 psig

Start Date: 2014.03.26

End Date:

2014.03.26

Last Calib.:

2014.03.26

Start Time: 13:40:01

End Time:

21:46:53

Time On Btm:

2014.03.26 @ 15:54:23

Time Off Btm:

2014.03.26 @ 19:00:23

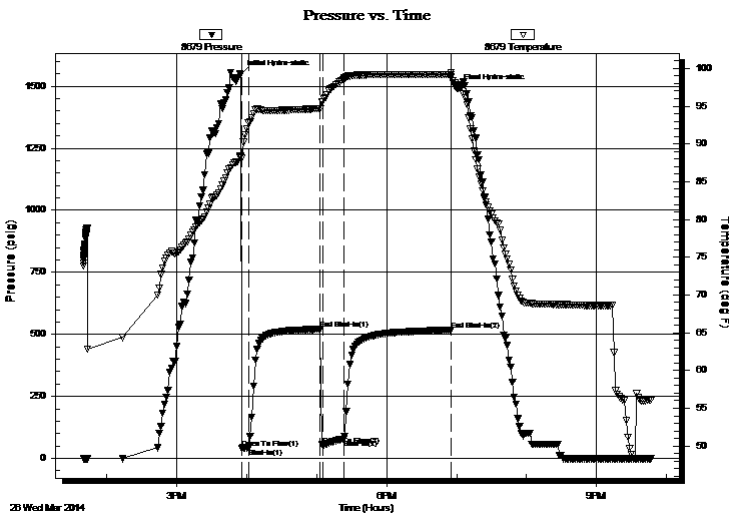
TEST COMMENT: I.F. - 5 - 1" INT. BLOW BUILT TO (B.O.B. IN 4 MIN.)

I.S.I. - 60 - NO B.B.

F.F. - 20 - (B.O.B. IN 1 MIN.)

F.S.I. - 90 - W.S.B.B. STARTED @ 10 MIN. (BUILT TO 1/4" IN 90 MIN.)

PRESSURE SUMMARY



Time (Min.)	Pressure (psig)	Temp (deg F)	Annotation
0	1547.42	88.36	Initial Hydro-static
1	39.75	88.11	Open To Flow (1)
7	42.30	92.84	Shut-In(1)
69	520.81	94.69	End Shut-In(1)
71	53.86	95.63	Open To Flow (2)
89	77.51	98.65	Shut-In(2)
181	516.24	99.20	End Shut-In(2)
186	1490.71	97.83	Final Hydro-static

Recovery

Length (ft)	Description	Volume (bbl)
63.00	O,C,W,M, 20% OIL 40% WATER 40%	M0.88
126.00	W,C,M,C,O, 20% WATER 30% MUD 50%	1.77
0.00	30 G.I.P.	0.00

Gas Rates

Choke (inches)	Pressure (psig)	Gas Rate (Mcf/d)



**TRILOBITE
TESTING, INC**

DRILL STEM TEST REPORT

FLUID SUMMARY

Samuel gary jr. & assoc. inc

SEC. 14 - 15 s. - 16 w./ ELLIS

1515 WYNKOOP STE. 700
DENVER CO.
80202
ATTN: CHRIS MITCHELL

Murphy # 2-14

Job Ticket: 56169

DST#: 1

Test Start: 2014.03.26 @ 13:40:00

Mud and Cushion Information

Mud Type: Gel Chem
Mud Weight: 9.00 lb/gal
Viscosity: 57.00 sec/qt
Water Loss: 7.99 in³
Resistivity: 0.00 ohm.m
Salinity: 7900.00 ppm
Filter Cake: 1.00 inches

Cushion Type:
Cushion Length: ft
Cushion Volume: bbl
Gas Cushion Type:
Gas Cushion Pressure: psig

Oil API: 38.4 deg API
Water Salinity: ppm

Recovery Information

Recovery Table

Length ft	Description	Volume bbl
63.00	O,C,W,M, 20% OIL 40% WATER 40% MUD	0.884
126.00	W,C,M,C,O, 20% WATER 30% MUD 50% OIL	1.767
0.00	30 G.I.P.	0.000

Total Length: 189.00 ft Total Volume: 2.651 bbl

Num Fluid Samples: 0 Num Gas Bombs: 0 Serial #:

Laboratory Name: Laboratory Location:

Recovery Comments: SAMPLER RECOVERY = 2,000 M.L. CLEAN OIL P.S.I = 250
50 DEG.

OIL GRAVITY = 37.4 @

Serial #: 8679

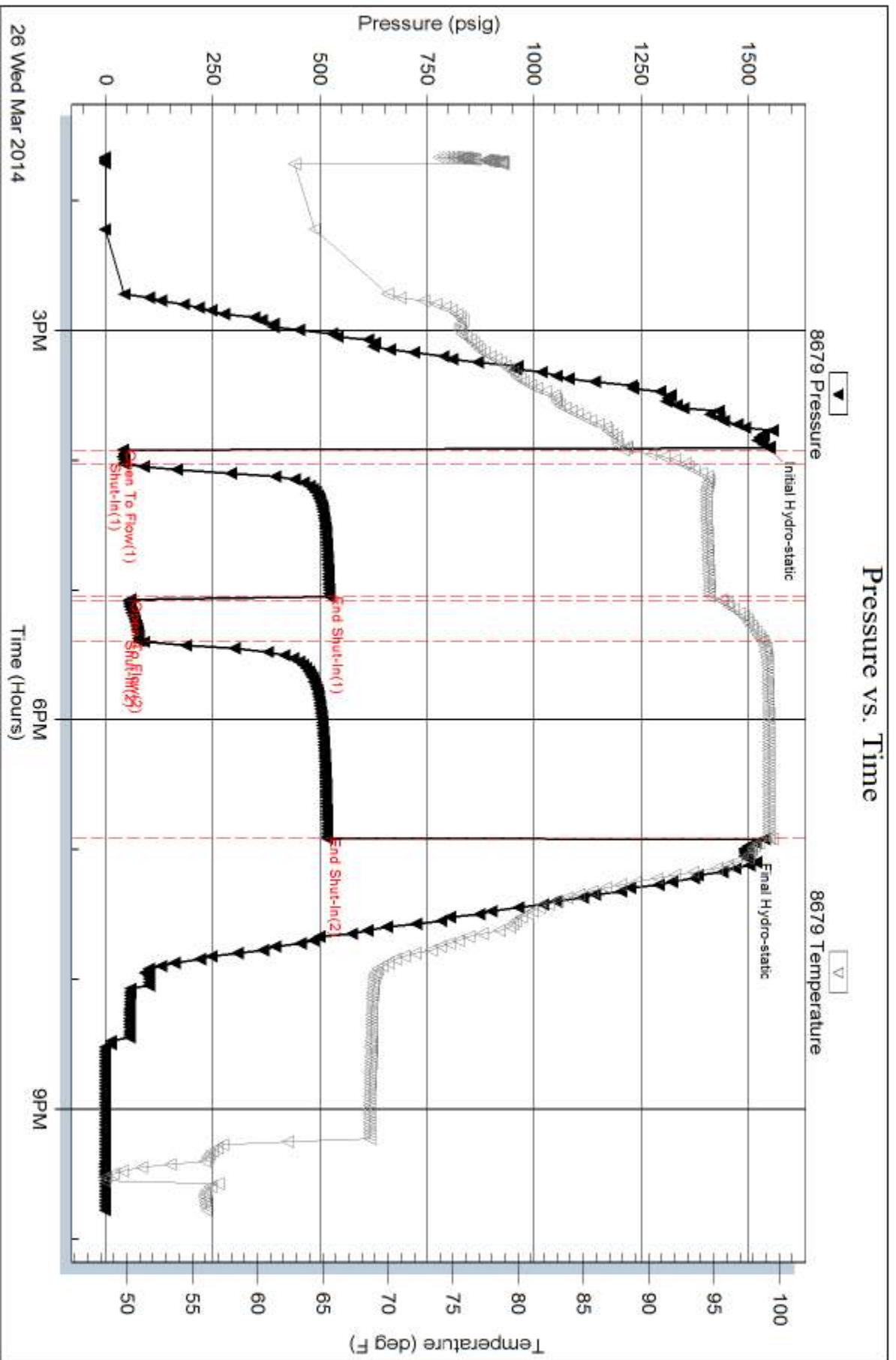
Inside

Samuel gary jr. & assoc. inc

Murphy # 2-14

DST Test Number: 1

Pressure vs. Time



Trilobite Testing, Inc

Ref. No: 56169

Printed: 2014.03.27 @ 08:17:44

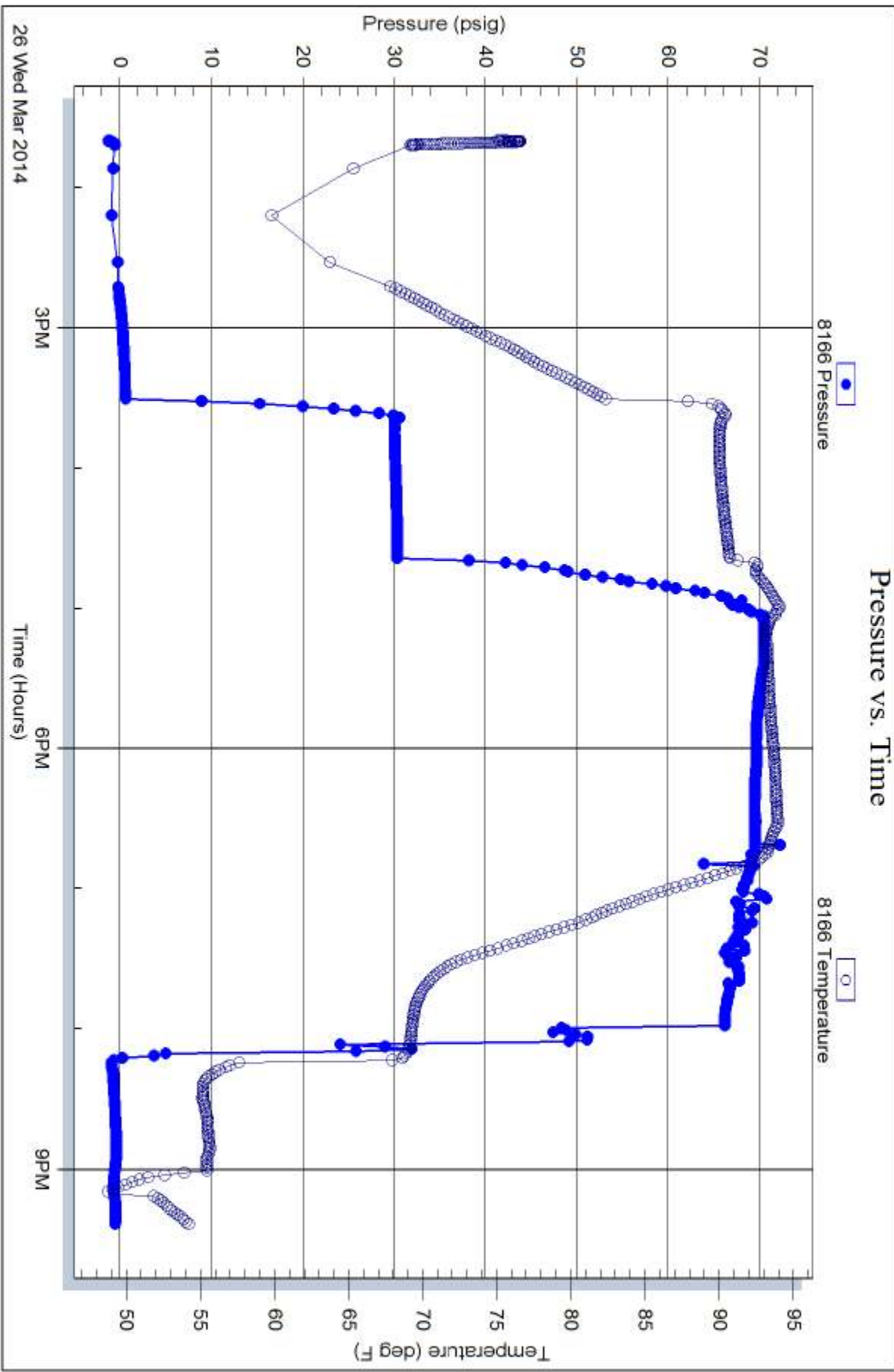
Serial #: 8166

Fluid

Samuel gary jr. & assoc. inc

Murphy # 2-14

DST Test Number: 1



Trilobite Testing, Inc

Ref. No: 56169

Printed: 2014.03.27 @ 08:17:44