



TRILOBITE TESTING, INC.

DRILL STEM TEST REPORT

McElvain Energy, Inc.
 1050 17th Street
 Suite 2500
 Denver, CO 80265-2080
 ATTN: Jeff Reindl/Jim McKi

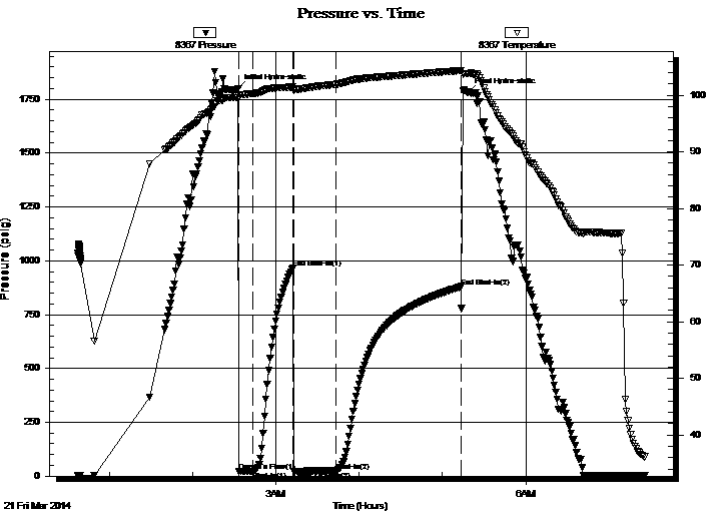
13-10S-22W Graham, KS
Noah 13-10
 Job Ticket: 51972 **DST#: 4**
 Test Start: 2014.03.21 @ 00:36:56

GENERAL INFORMATION:

Formation: **Lansing K-L**
 Deviated: No Whipstock: ft (KB)
 Time Tool Opened: 02:33:25
 Time Test Ended: 07:26:10
 Interval: **3720.00 ft (KB) To 3756.00 ft (KB) (TVD)**
 Total Depth: 3756.00 ft (KB) (TVD)
 Hole Diameter: 7.88 inches Hole Condition: Fair
 Test Type: Conventional Bottom Hole (Initial)
 Tester: Jimmy Ricketts
 Unit No: 74
 Reference Elevations: 2276.00 ft (KB)
 2266.00 ft (CF)
 KB to GR/CF: 10.00 ft

Serial #: 8367 Outside
 Press@RunDepth: 23.32 psig @ 3721.00 ft (KB) Capacity: 8000.00 psig
 Start Date: 2014.03.21 End Date: 2014.03.21 Last Calib.: 1899.12.30
 Start Time: 00:36:56 End Time: 07:26:10 Time On Btm: 2014.03.21 @ 02:32:40
 Time Off Btm: 2014.03.21 @ 05:18:10

TEST COMMENT: Weak 1/4 inch blow throughout initial flow period.
 No blow final flow period.
 40 PSI on sampler.
 60 ml gas in sampler.



PRESSURE SUMMARY

Time (Min.)	Pressure (psig)	Temp (deg F)	Annotation
0	1800.34	99.58	Initial Hydro-static
1	21.56	99.85	Open To Flow (1)
11	22.36	100.28	Shut-In(1)
40	966.47	101.46	End Shut-In(1)
40	22.64	100.83	Open To Flow (2)
71	23.32	101.91	Shut-In(2)
161	880.41	104.35	End Shut-In(2)
166	1782.81	103.86	Final Hydro-static

Recovery

Length (ft)	Description	Volume (bbl)
5.00	Oil cut mud 8% O & 92% M	0.07

Gas Rates

Choke (inches)	Pressure (psig)	Gas Rate (Mcf/d)



**TRILOBITE
TESTING, INC**

DRILL STEM TEST REPORT

FLUID SUMMARY

McElvain Energy, Inc.

13-10S-22W Graham, KS

1050 17th Street
Suite 2500
Denver, CO 80265-2080
ATTN: Jeff Reindl/Jim McKi

Noah 13-10

Job Ticket: 51972

DST#: 4

Test Start: 2014.03.21 @ 00:36:56

Mud and Cushion Information

Mud Type: Gel Chem

Mud Weight: 9.00 lb/gal

Viscosity: 58.00 sec/qt

Water Loss: 7.20 in³

Resistivity: ohm.m

Salinity: 1000.00 ppm

Filter Cake: inches

Cushion Type:

Cushion Length: ft

Cushion Volume: bbl

Gas Cushion Type:

Gas Cushion Pressure: psig

Oil API:

Water Salinity: deg API

ppm

Recovery Information

Recovery Table

Length ft	Description	Volume bbl
5.00	Oil cut mud 8% O & 92% M	0.070

Total Length: 5.00 ft Total Volume: 0.070 bbl

Num Fluid Samples: 0

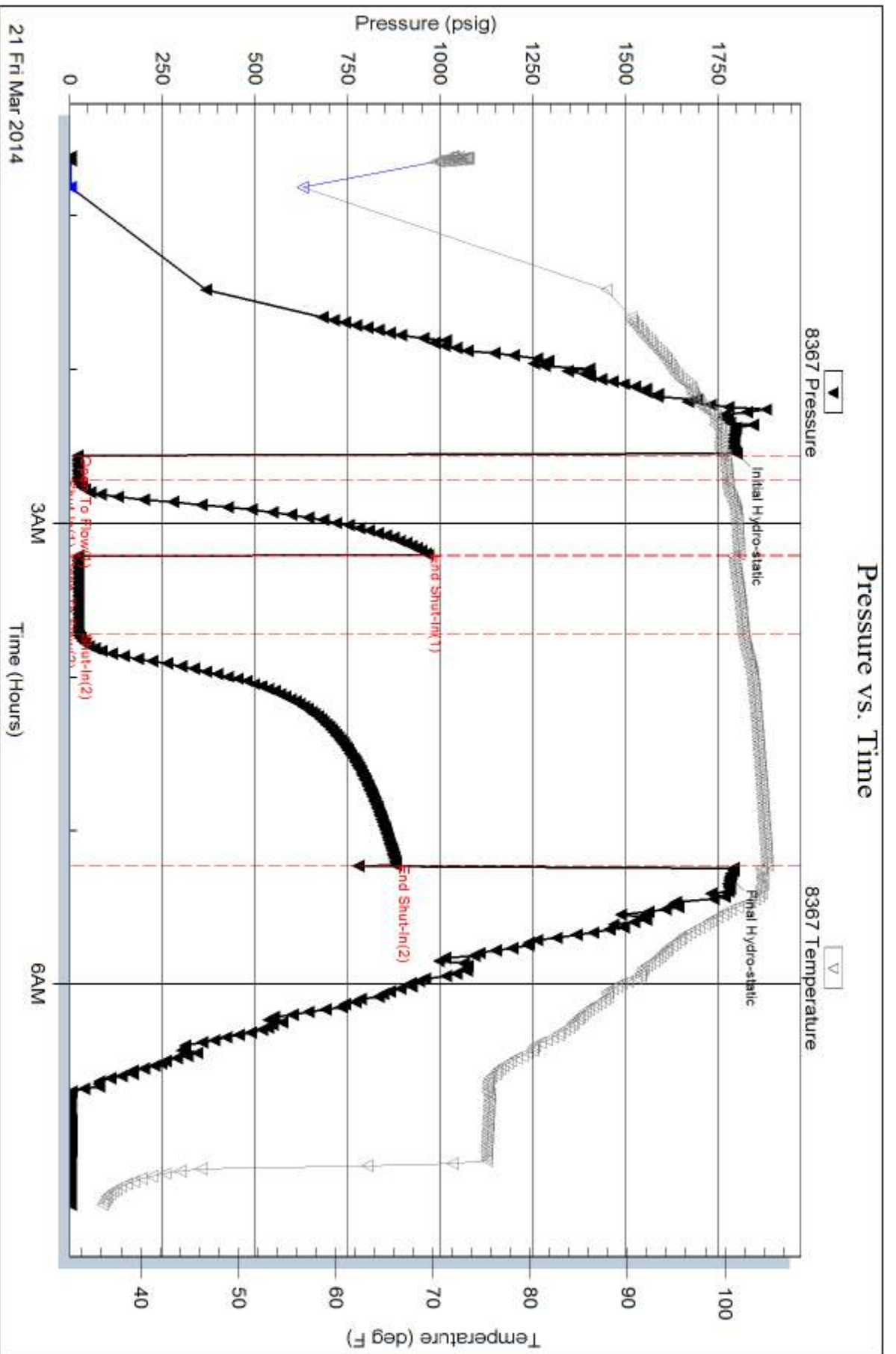
Num Gas Bombs: 0

Serial #:

Laboratory Name:

Laboratory Location:

Recovery Comments:



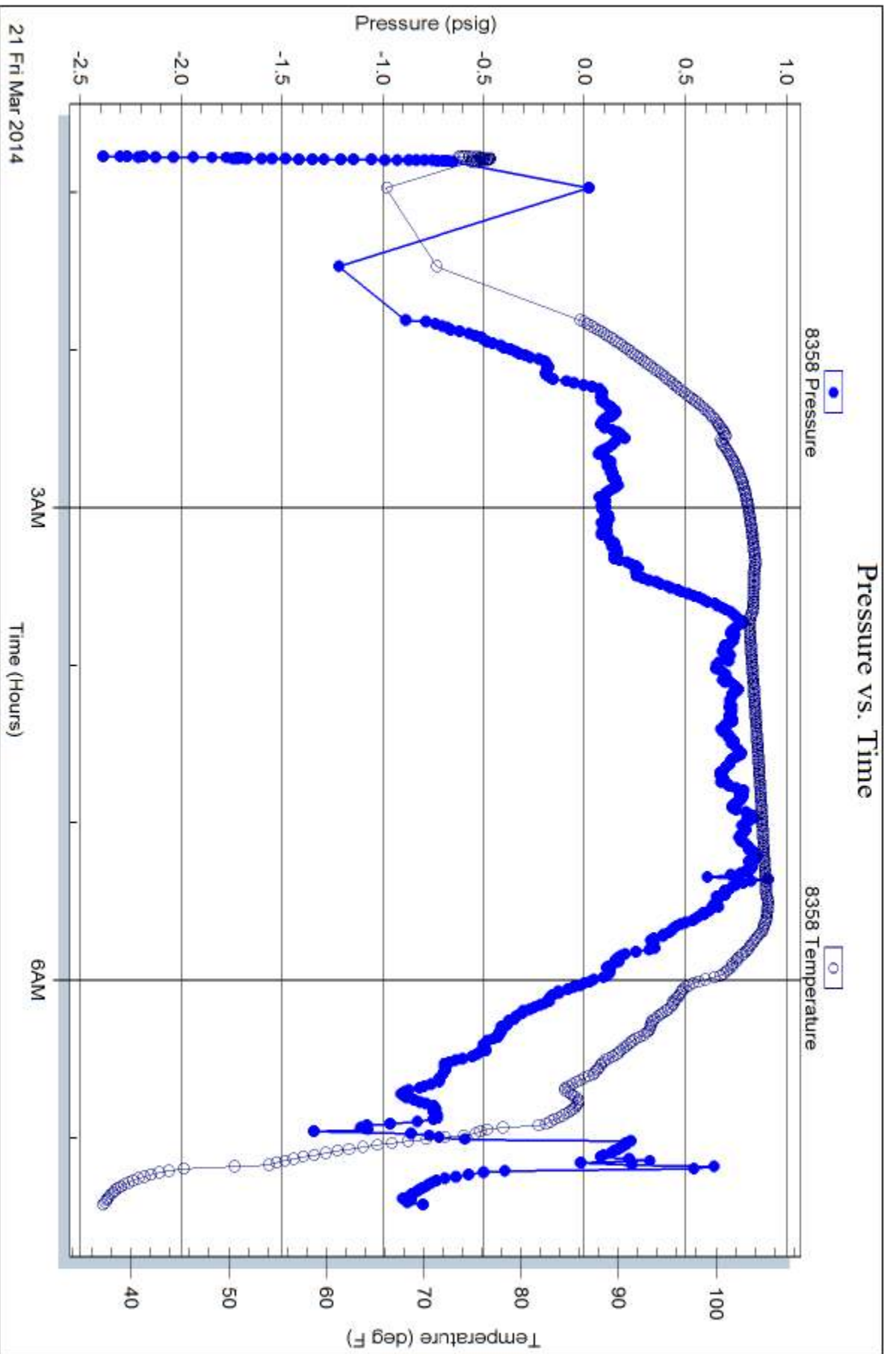
Serial #: 8358

Fluid

McEvain Energy, Inc.

Noah 13-10

DST Test Number: 4



Trilobite Testing, Inc

Ref. No: 51972

Printed: 2014.03.21 @ 09:01:42