



DRILL STEM TEST REPORT

Prepared For: **Murfin Driling Co., Inc.**

250 N Water STE 300
Wichita, KS 67202

ATTN: Robert Hendrix

Dellere #1-25

25- 4s- 31w Rawlings,KS

Start Date: 2014.03.27 @ 22:08:00

End Date: 2014.03.28 @ 06:31:00

Job Ticket #: 56373 DST #: 1

Trilobite Testing, Inc

PO Box 362 Hays, KS 67601

ph: 785-625-4778 fax: 785-625-5620

Printed: 2014.04.02 @ 16:23:26



**TRILOBITE
TESTING, INC**

DRILL STEM TEST REPORT

Murfin Drilling Co., Inc.

25- 4s- 31w Rawlings,KS

250 N Water STE 300
Wichita, KS 67202

Dellere #1-25

Job Ticket: 56373

DST#: 1

ATTN: Robert Hendrix

Test Start: 2014.03.27 @ 22:08:00

GENERAL INFORMATION:

Formation: **Toronto - LKC " B "**

Deviated: No Whipstock: ft (KB)

Time Tool Opened: 00:21:15

Time Test Ended: 06:31:00

Test Type: Conventional Bottom Hole (Initial)

Tester: Samuel Esparza

Unit No: 71

Interval: 3894.00 ft (KB) To 3980.00 ft (KB) (TVD)

Reference Elevations: 2910.00 ft (KB)

Total Depth: 3980.00 ft (KB) (TVD)

2899.00 ft (CF)

Hole Diameter: 7.88 inches Hole Condition: Good

KB to GR/CF: 11.00 ft

Serial #: 8845 Inside

Press@RunDepth: 78.80 psig @ 3895.00 ft (KB)

Capacity: 8000.00 psig

Start Date: 2014.03.27

End Date:

2014.03.28

Last Calib.:

2014.03.28

Start Time: 22:08:05

End Time:

06:30:59

Time On Btm:

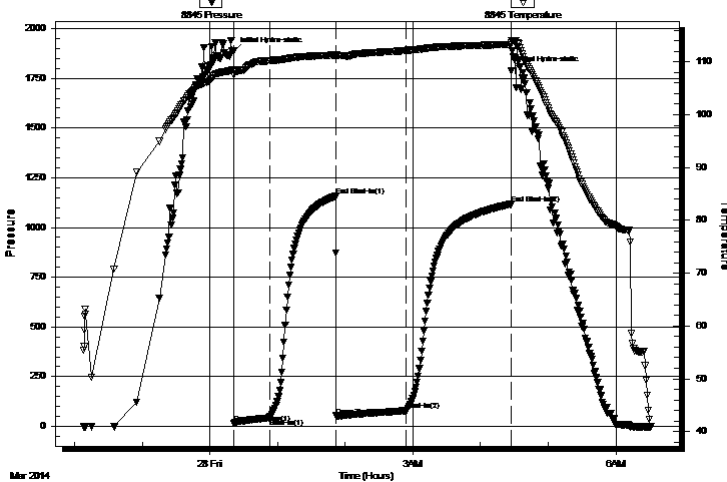
2014.03.28 @ 00:21:00

Time Off Btm:

2014.03.28 @ 04:27:15

TEST COMMENT: IF: 4 1/2" Blow .
IS: No Return.
FF: 8 1/4" Blow .
FS: 1/4" Return.

Pressure vs. Time



PRESSURE SUMMARY

Time (Min.)	Pressure (psig)	Temp (deg F)	Annotation
0	1885.10	108.48	Initial Hydro-static
1	16.45	107.50	Open To Flow (1)
32	42.52	110.20	Shut-In(1)
91	1157.56	111.28	End Shut-In(1)
91	52.48	111.10	Open To Flow (2)
154	78.80	112.17	Shut-In(2)
246	1116.92	113.31	End Shut-In(2)
247	1787.09	113.70	Final Hydro-static

Recovery

Length (ft)	Description	Volume (bbl)
140.00	GOCM 10g 40o 50m	0.69

Gas Rates

	Choke (inches)	Pressure (psig)	Gas Rate (Mcf/d)



**TRILOBITE
TESTING, INC**

DRILL STEM TEST REPORT

Murfin Drilling Co., Inc.
250 N Water STE 300
Wichita, KS 67202
ATTN: Robert Hendrix

25- 4s- 31w Rawlings,KS

Dellere #1-25

Job Ticket: 56373

DST#: 1

Test Start: 2014.03.27 @ 22:08:00

GENERAL INFORMATION:

Formation: **Toronto - LKC " B "**

Deviated: No Whipstock: ft (KB)

Time Tool Opened: 00:21:15

Time Test Ended: 06:31:00

Test Type: Conventional Bottom Hole (Initial)

Tester: Samuel Esparza

Unit No: 71

Interval: 3894.00 ft (KB) To 3980.00 ft (KB) (TVD)

Reference Elevations: 2910.00 ft (KB)

Total Depth: 3980.00 ft (KB) (TVD)

2899.00 ft (CF)

Hole Diameter: 7.88 inches Hole Condition: Good

KB to GR/CF: 11.00 ft

Serial #: 6772 Outside

Press@RunDepth: psig @ 3895.00 ft (KB)

Capacity: 8000.00 psig

Start Date: 2014.03.27

End Date:

2014.03.28

Last Calib.:

2014.03.28

Start Time: 22:08:05

End Time:

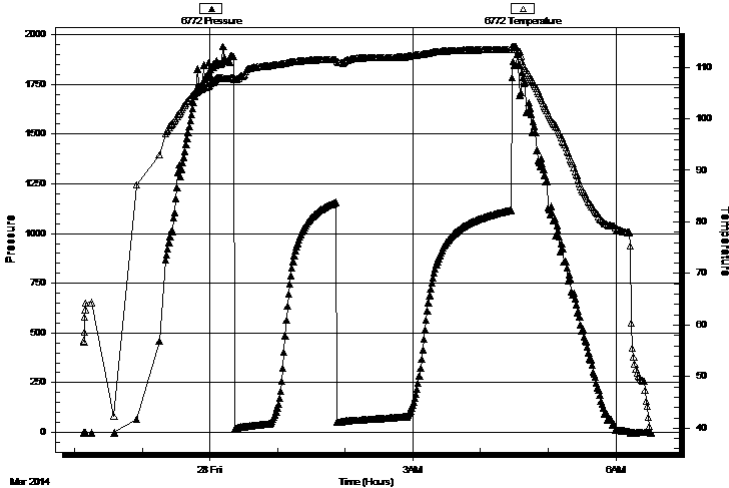
06:31:14

Time On Btm:

Time Off Btm:

TEST COMMENT: IF: 4 1/2" Blow .
IS: No Return.
FF: 8 1/4" Blow .
FS: 1/4" Return.

Pressure vs. Time



PRESSURE SUMMARY

Time (Min.)	Pressure (psig)	Temp (deg F)	Annotation

Recovery

Length (ft)	Description	Volume (bbl)
140.00	GOCM 10g 40o 50m	0.69

Gas Rates

	Choke (inches)	Pressure (psig)	Gas Rate (Mcf/d)



**TRILOBITE
TESTING, INC.**

DRILL STEM TEST REPORT

TOOL DIAGRAM

Murfin Drilling Co., Inc.

25- 4s- 31w Rawlings,KS

250 N Water STE 300
Wichita, KS 67202

Dellere #1-25

Job Ticket: 56373

DST#: 1

ATTN: Robert Hendrix

Test Start: 2014.03.27 @ 22:08:00

Tool Information

Drill Pipe:	Length: 3689.00 ft	Diameter: 3.80 inches	Volume: 51.75 bbl	Tool Weight: 2000.00 lb
Heavy Wt. Pipe:	Length: 0.00 ft	Diameter: 0.00 inches	Volume: 0.00 bbl	Weight set on Packer: 30000.00 lb
Drill Collar:	Length: 207.00 ft	Diameter: 2.25 inches	Volume: 1.02 bbl	Weight to Pull Loose: 95000.00 lb
			<u>Total Volume: 52.77 bbl</u>	Tool Chased 0.00 ft
Drill Pipe Above KB:	30.00 ft			String Weight: Initial 70000.00 lb
Depth to Top Packer:	3894.00 ft			Final 70000.00 lb
Depth to Bottom Packer:	ft			
Interval between Packers:	86.00 ft			
Tool Length:	114.00 ft			
Number of Packers:	2	Diameter: 6.75 inches		

Tool Comments:

Tool Description

Tool Description	Length (ft)	Serial No.	Position	Depth (ft)	Accum. Lengths
Change Over Sub	1.00			3867.00	
Shut In Tool	5.00			3872.00	
Hydraulic tool	5.00			3877.00	
Jars	5.00			3882.00	
Safety Joint	3.00			3885.00	
Packer	5.00			3890.00	28.00 Bottom Of Top Packer
Packer	4.00			3894.00	
Stubb	1.00			3895.00	
Recorder	0.00	6772	Outside	3895.00	
Recorder	0.00	8845	Inside	3895.00	
Perforations	15.00			3910.00	
Change Over Sub	1.00			3911.00	
Drill Pipe	63.00			3974.00	
Change Over Sub	1.00			3975.00	
Bullnose	5.00			3980.00	86.00 Bottom Packers & Anchor

Total Tool Length: 114.00



**TRILOBITE
TESTING, INC**

DRILL STEM TEST REPORT

FLUID SUMMARY

Murfin Drilling Co., Inc.

25- 4s- 31w Rawlings,KS

250 N Water STE 300
Wichita, KS 67202

Dellere #1-25

Job Ticket: 56373

DST#: 1

ATTN: Robert Hendrix

Test Start: 2014.03.27 @ 22:08:00

Mud and Cushion Information

Mud Type: Gel Chem

Cushion Type:

Oil API:

deg API

Mud Weight: 9.00 lb/gal

Cushion Length:

ft

Water Salinity:

ppm

Viscosity: 60.00 sec/qt

Cushion Volume:

bbbl

Water Loss: 5.99 in³

Gas Cushion Type:

Resistivity: 0.00 ohm.m

Gas Cushion Pressure:

psig

Salinity: 1000.00 ppm

Filter Cake: 2.00 inches

Recovery Information

Recovery Table

Length ft	Description	Volume bbl
140.00	GOCM 10g 40o 50m	0.688

Total Length: 140.00 ft Total Volume: 0.688 bbl

Num Fluid Samples: 0

Num Gas Bombs: 0

Serial #:

Laboratory Name:

Laboratory Location:

Recovery Comments:

Serial #: 8845

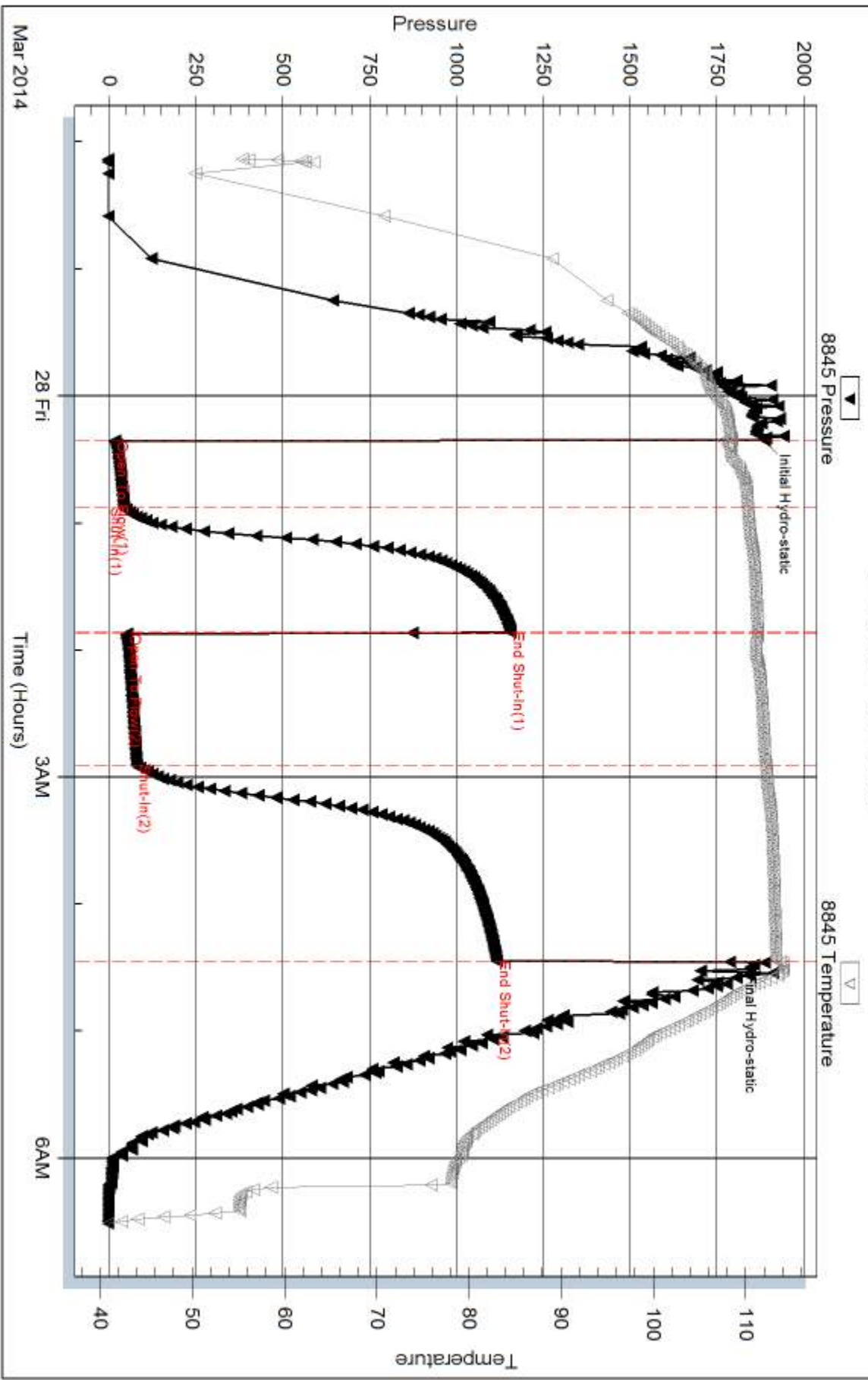
Inside

Murfin Drilling Co., Inc.

Delere #1-25

DST Test Number: 1

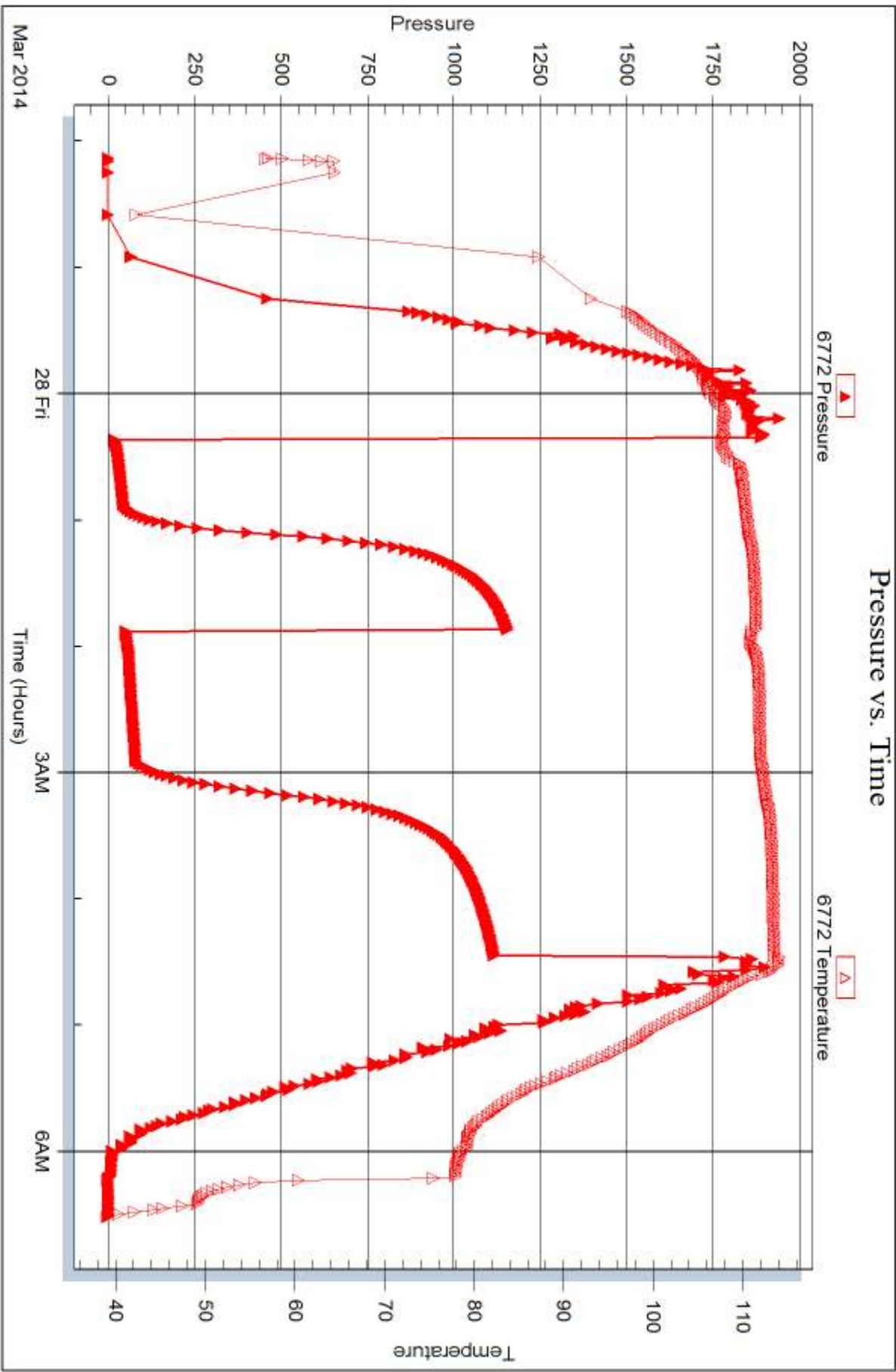
Pressure vs. Time



Tribble Testing, Inc

Ref. No: 56373

Printed: 2014.04.02 @ 16:23:28





DRILL STEM TEST REPORT

Prepared For: **Murfin Driling Co., Inc.**

250 N Water STE 300
Wichita, KS 67202

ATTN: Robert Hendrix

Dellere #1-25

25- 4s- 31w Rawlings,KS

Start Date: 2014.03.28 @ 17:20:00

End Date: 2014.03.29 @ 00:09:45

Job Ticket #: 56374 DST #: 2

Trilobite Testing, Inc

PO Box 362 Hays, KS 67601

ph: 785-625-4778 fax: 785-625-5620

Printed: 2014.04.02 @ 16:23:01

Murfin Driling Co., Inc.
25- 4s- 31w Rawlings,KS
Dellere #1-25
DST # 2
LKC " E-F "
2014.03.28



TRILOBITE TESTING, INC

DRILL STEM TEST REPORT

Murfin Drilling Co., Inc.

25- 4s- 31w Rawlings,KS

250 N Water STE 300
Wichita, KS 67202

Dellere #1-25

Job Ticket: 56374

DST#: 2

ATTN: Robert Hendrix

Test Start: 2014.03.28 @ 17:20:00

GENERAL INFORMATION:

Formation: **LKC " E- F "**

Deviated: No Whipstock: ft (KB)

Time Tool Opened: 19:07:30

Time Test Ended: 00:09:45

Test Type: Conventional Bottom Hole (Reset)

Tester: Samuel Esparza

Unit No: 71

Interval: 3998.00 ft (KB) To 4023.00 ft (KB) (TVD)

Reference Elevations: 2910.00 ft (KB)

Total Depth: 3998.00 ft (KB) (TVD)

2899.00 ft (CF)

Hole Diameter: 7.88 inches Hole Condition: Good

KB to GR/CF: 11.00 ft

Serial #: 8845 Outside

Press@RunDepth: 17.57 psig @ 3999.00 ft (KB)

Capacity: 8000.00 psig

Start Date: 2014.03.28

End Date:

2014.03.29

Last Calib.:

2014.03.29

Start Time: 17:20:05

End Time:

00:09:44

Time On Btm:

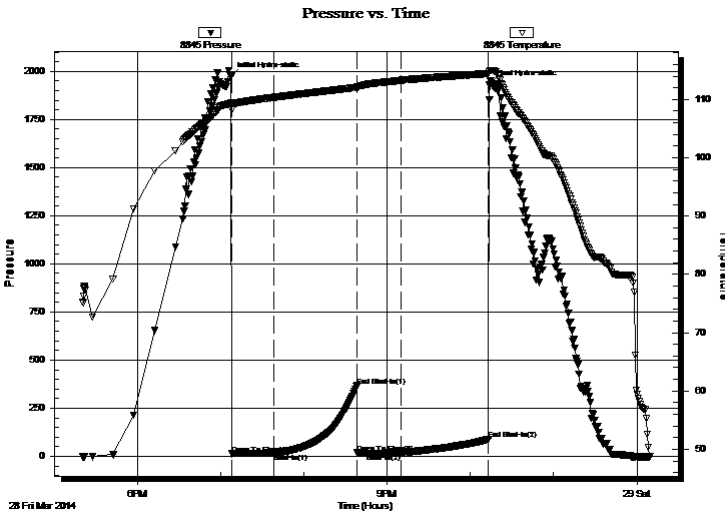
2014.03.28 @ 19:07:15

Time Off Btm:

2014.03.28 @ 22:13:30

TEST COMMENT: IF: 1/4" Blow died back to a Weak surface Blow .
IS: No Return.
FF: No Blow .
FS: No Return.

PRESSURE SUMMARY



Time (Min.)	Pressure (psig)	Temp (deg F)	Annotation
0	1971.64	109.42	Initial Hydro-static
1	12.20	108.20	Open To Flow (1)
31	15.01	110.35	Shut-In(1)
91	366.32	112.07	End Shut-In(1)
91	17.66	111.97	Open To Flow (2)
123	17.57	113.28	Shut-In(2)
186	87.14	114.45	End Shut-In(2)
187	1931.42	114.83	Final Hydro-static

Recovery

Length (ft)	Description	Volume (bbl)
5.00	Mud 100m (oil spots)	0.02

* Recovery from multiple tests

Gas Rates

Choke (inches)	Pressure (psig)	Gas Rate (Mcf/d)



**TRILOBITE
TESTING, INC.**

DRILL STEM TEST REPORT

Murfin Drilling Co., Inc.

250 N Water STE 300
Wichita, KS 67202

ATTN: Robert Hendrix

25- 4s- 31w Rawlings,KS

Dellere #1-25

Job Ticket: 56374

DST#: 2

Test Start: 2014.03.28 @ 17:20:00

GENERAL INFORMATION:

Formation: **LKC " E- F "**

Deviated: No Whipstock: ft (KB)

Time Tool Opened: 19:07:30

Time Test Ended: 00:09:45

Test Type: Conventional Bottom Hole (Reset)

Tester: Samuel Esparza

Unit No: 71

Interval: 3998.00 ft (KB) To 4023.00 ft (KB) (TVD)

Total Depth: 3998.00 ft (KB) (TVD)

Hole Diameter: 7.88 inches Hole Condition: Good

Reference Elevations: 2910.00 ft (KB)

2899.00 ft (CF)

KB to GR/CF: 11.00 ft

Serial #: 6772 Outside

Press@RunDepth: psig @ 3999.00 ft (KB)

Start Date: 2014.03.28

End Date: 2014.03.29

Start Time: 17:20:05

End Time: 00:09:59

Capacity: 8000.00 psig

Last Calib.: 2014.03.29

Time On Btm:

Time Off Btm:

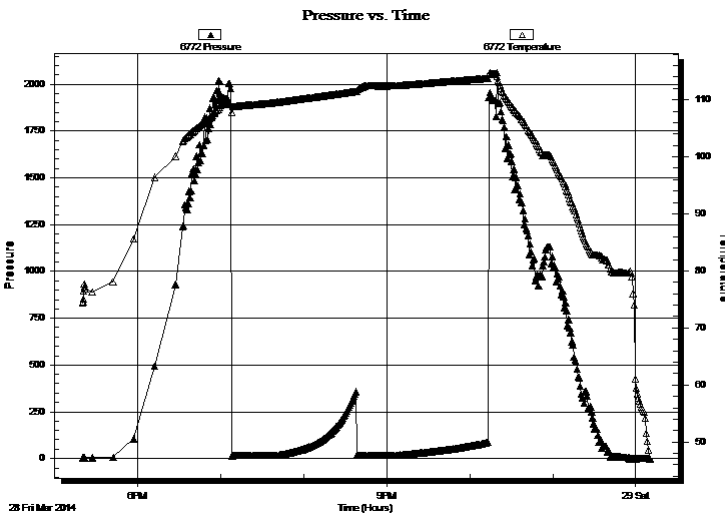
TEST COMMENT: IF: 1/4" Blow died back to a Weak surface Blow .

IS: No Return.

FF: No Blow .

FS: No Return.

PRESSURE SUMMARY



Time (Min.)	Pressure (psig)	Temp (deg F)	Annotation

Recovery

Length (ft)	Description	Volume (bbl)
5.00	Mud 100m (oil spots)	0.02

Gas Rates

Choke (inches)	Pressure (psig)	Gas Rate (Mcf/d)

* Recovery from multiple tests



**TRILOBITE
TESTING, INC**

DRILL STEM TEST REPORT

TOOL DIAGRAM

Murfin Drilling Co., Inc.

25- 4s- 31w Rawlings,KS

250 N Water STE 300
Wichita, KS 67202

Dellere #1-25

Job Ticket: 56374

DST#: 2

ATTN: Robert Hendrix

Test Start: 2014.03.28 @ 17:20:00

Tool Information

Drill Pipe:	Length: 3783.00 ft	Diameter: 3.80 inches	Volume: 53.07 bbl	Tool Weight:	2000.00 lb
Heavy Wt. Pipe:	Length: 0.00 ft	Diameter: 0.00 inches	Volume: 0.00 bbl	Weight set on Packer:	30000.00 lb
Drill Collar:	Length: 207.00 ft	Diameter: 2.25 inches	Volume: 1.02 bbl	Weight to Pull Loose:	100000.0 lb
			<u>Total Volume: 54.09 bbl</u>	Tool Chased	0.00 ft
Drill Pipe Above KB:	20.00 ft			String Weight: Initial	71000.00 lb
Depth to Top Packer:	3998.00 ft			Final	71000.00 lb
Depth to Bottom Packer:	ft				
Interval between Packers:	25.00 ft				
Tool Length:	53.00 ft				
Number of Packers:	2	Diameter: 6.75 inches			

Tool Comments:

Tool Description

Tool Description	Length (ft)	Serial No.	Position	Depth (ft)	Accum. Lengths
Change Over Sub	1.00			3971.00	
Shut In Tool	5.00			3976.00	
Hydraulic tool	5.00			3981.00	
Jars	5.00			3986.00	
Safety Joint	3.00			3989.00	
Packer	5.00			3994.00	28.00 Bottom Of Top Packer
Packer	4.00			3998.00	
Stubb	1.00			3999.00	
Recorder	0.00	6772	Outside	3999.00	
Recorder	0.00	8845	Outside	3999.00	
Perforations	19.00			4018.00	
Bullnose	5.00			4023.00	25.00 Bottom Packers & Anchor

Total Tool Length: 53.00



**TRILOBITE
TESTING, INC**

DRILL STEM TEST REPORT

FLUID SUMMARY

Murfin Drilling Co., Inc.

25- 4s- 31w Rawlings,KS

250 N Water STE 300
Wichita, KS 67202

Dellere #1-25

Job Ticket: 56374

DST#: 2

ATTN: Robert Hendrix

Test Start: 2014.03.28 @ 17:20:00

Mud and Cushion Information

Mud Type: Gel Chem

Cushion Type:

Oil API:

deg API

Mud Weight: 9.00 lb/gal

Cushion Length:

ft

Water Salinity:

ppm

Viscosity: 57.00 sec/qt

Cushion Volume:

bbbl

Water Loss: 5.59 in³

Gas Cushion Type:

Resistivity: 0.00 ohm.m

Gas Cushion Pressure:

psig

Salinity: 1000.00 ppm

Filter Cake: 2.00 inches

Recovery Information

Recovery Table

Length ft	Description	Volume bbl
5.00	Mud 100m (oil spots)	0.025

Total Length: 5.00 ft Total Volume: 0.025 bbl

Num Fluid Samples: 0

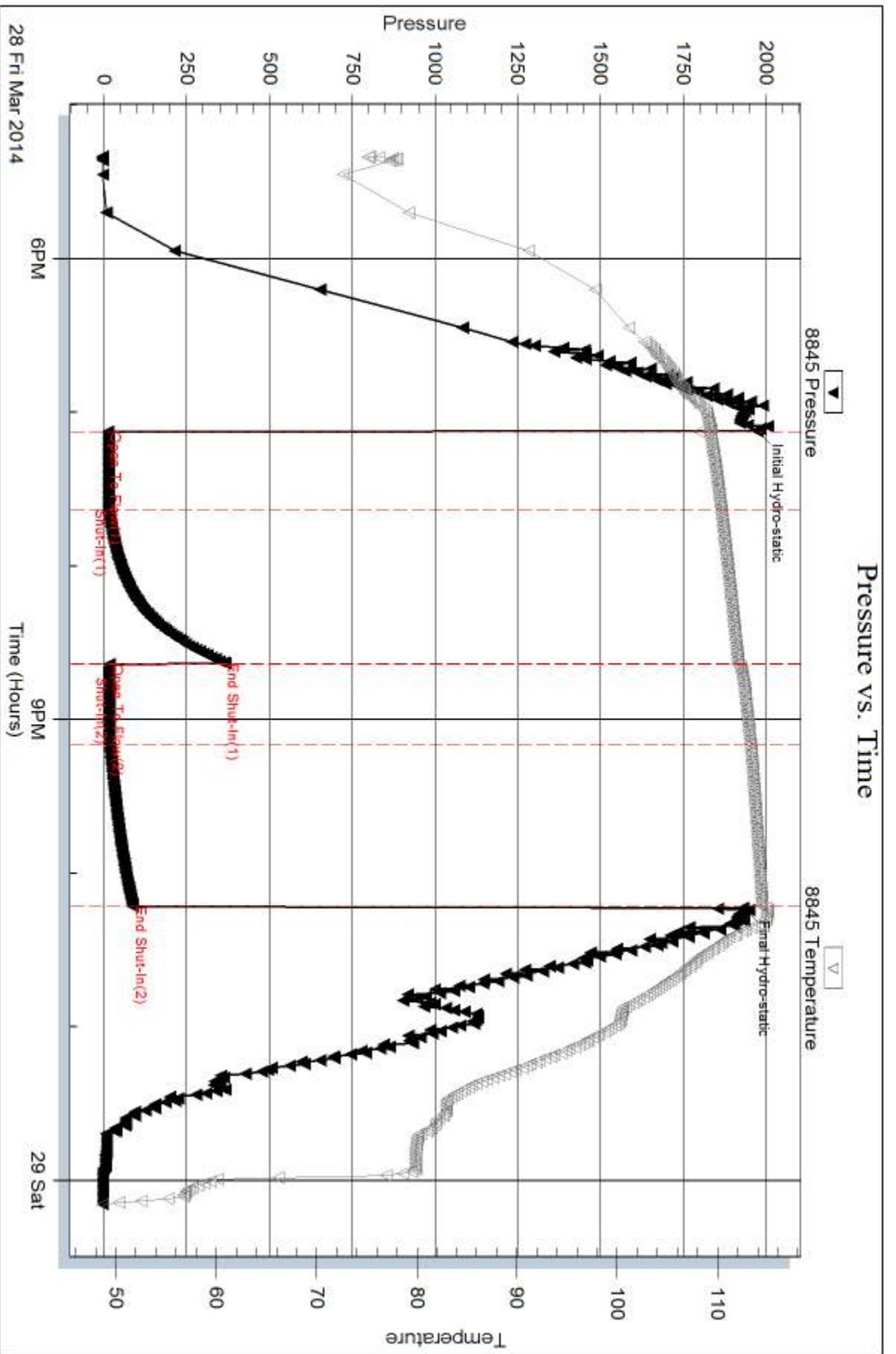
Num Gas Bombs: 0

Serial #:

Laboratory Name:

Laboratory Location:

Recovery Comments:

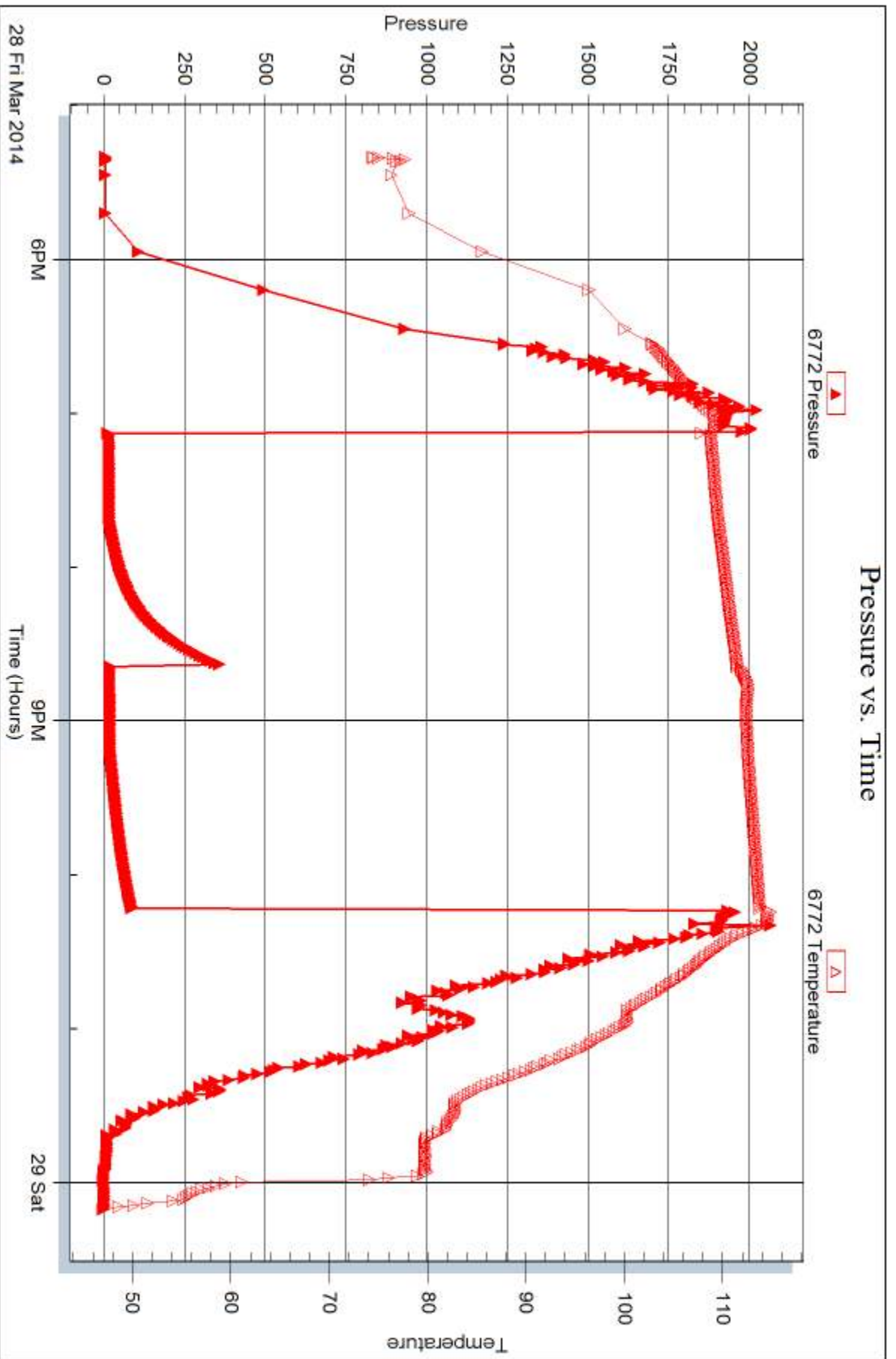


Serial #: 6772

Outside Murfin Drilling Co., Inc.

Delier #1-25

DST Test Number: 2



Trilobite Testing, Inc

Ref. No: 56374

Printed: 2014.04.02 @ 16:23:03



DRILL STEM TEST REPORT

Prepared For: **Murfin Driling Co., Inc.**

250 N Water STE 300
Wichita, KS 67202

ATTN: Robert Hendrix

Dellere #1-25

25- 4s- 31w Rawlings,KS

Start Date: 2014.03.29 @ 14:43:00

End Date: 2014.03.30 @ 01:18:45

Job Ticket #: 56375 DST #: 3

Trilobite Testing, Inc

PO Box 362 Hays, KS 67601

ph: 785-625-4778 fax: 785-625-5620

Printed: 2014.04.02 @ 16:22:24



**TRILOBITE
TESTING, INC**

DRILL STEM TEST REPORT

Murfin Drilling Co., Inc.

25- 4s- 31w Rawlings,KS

250 N Water STE 300
Wichita, KS 67202

Dellere #1-25

Job Ticket: 56375

DST#: 3

ATTN: Robert Hendrix

Test Start: 2014.03.29 @ 14:43:00

GENERAL INFORMATION:

Formation: **LKC " H- J "**

Deviated: No Whipstock: ft (KB)

Time Tool Opened: 16:49:45

Time Test Ended: 01:18:45

Test Type: Conventional Bottom Hole (Reset)

Tester: Samuel Esparza

Unit No: 71

Interval: 4046.00 ft (KB) To 4111.00 ft (KB) (TVD)

Reference Elevations: 2910.00 ft (KB)

Total Depth: 4111.00 ft (KB) (TVD)

2899.00 ft (CF)

Hole Diameter: 7.88 inches Hole Condition: Good

KB to GR/CF: 11.00 ft

Serial #: 8845

Inside

Press@RunDepth: 527.52 psig @ 4047.00 ft (KB)

Capacity: 8000.00 psig

Start Date: 2014.03.29

End Date:

2014.03.30

Last Calib.:

2014.03.30

Start Time:

14:43:05

End Time:

01:18:45

Time On Btm:

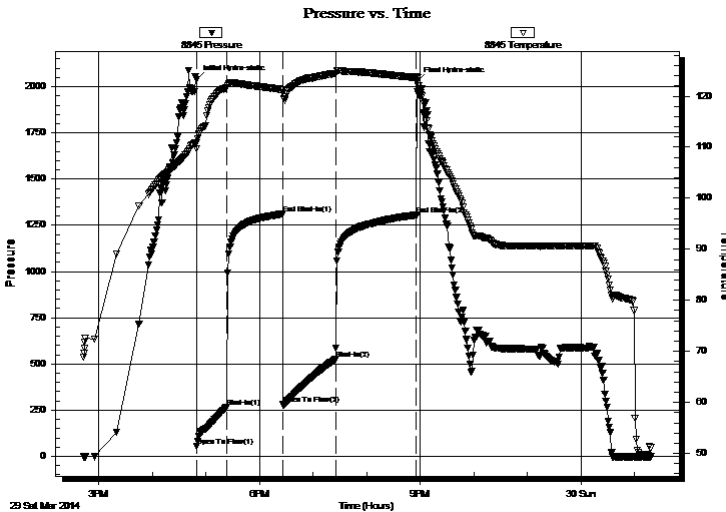
2014.03.29 @ 16:49:30

Time Off Btm:

2014.03.29 @ 20:56:30

TEST COMMENT: IF: BOB @ 2 1/2 min.
ISI Bled off for 6 min. BOB Return @ 16 min.
FF: BOB Immediately.
FSI: Bled off for 6 min. BOB Return @ 14 min.

PRESSURE SUMMARY



Time (Min.)	Pressure (psig)	Temp (deg F)	Annotation
0	2038.90	110.88	Initial Hydro-static
1	54.77	109.64	Open To Flow (1)
34	267.67	121.67	Shut-In(1)
97	1311.73	121.30	End Shut-In(1)
97	279.66	120.77	Open To Flow (2)
156	527.52	124.46	Shut-In(2)
246	1305.42	123.59	End Shut-In(2)
247	2027.64	123.85	Final Hydro-static

Recovery

Length (ft)	Description	Volume (bbl)
1290.00	GO 30g 70o	16.21
0.00	1700' GIP	0.00

* Recovery from multiple tests

Gas Rates

	Choke (inches)	Pressure (psig)	Gas Rate (Mcf/d)



DRILL STEM TEST REPORT

Murfin Drilling Co., Inc.
 250 N Water STE 300
 Wichita, KS 67202
 ATTN: Robert Hendrix

25- 4s- 31w Rawlings,KS
Dellere #1-25
 Job Ticket: 56375 **DST#: 3**
 Test Start: 2014.03.29 @ 14:43:00

GENERAL INFORMATION:

Formation: **LKC " H- J "**

Deviated: No Whipstock: ft (KB)

Time Tool Opened: 16:49:45

Time Test Ended: 01:18:45

Interval: 4046.00 ft (KB) To 4111.00 ft (KB) (TVD)

Total Depth: 4111.00 ft (KB) (TVD)

Hole Diameter: 7.88 inches Hole Condition: Good

Test Type: Conventional Bottom Hole (Reset)

Tester: Samuel Esparza

Unit No: 71

Reference Elevations: 2910.00 ft (KB)

2899.00 ft (CF)

KB to GR/CF: 11.00 ft

Serial #: 6772 Outside

Press@RunDepth: psig @ 4047.00 ft (KB)

Start Date: 2014.03.29

End Date:

Start Time: 14:42:05

End Time:

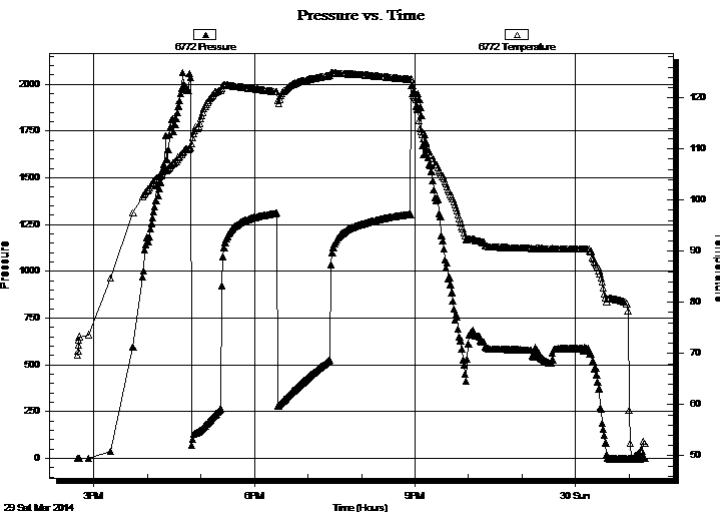
Capacity: 8000.00 psig

Last Calib.: 2014.03.30

Time On Btm:

Time Off Btm:

TEST COMMENT: IF: BOB @ 2 1/2 min.
 ISI Bled off for 6 min. BOB Return @ 16 min.
 FF: BOB Immediatly.
 FS!: Bled off for 6 min. BOB Return @ 14 min.



PRESSURE SUMMARY

Time (Min.)	Pressure (psig)	Temp (deg F)	Annotation

Recovery

Length (ft)	Description	Volume (bbl)
1290.00	GO 30g 70o	16.21
0.00	1700' GIP	0.00

Gas Rates

	Choke (inches)	Pressure (psig)	Gas Rate (Mcf/d)

* Recovery from multiple tests



**TRILOBITE
TESTING, INC**

DRILL STEM TEST REPORT

TOOL DIAGRAM

Murfin Drilling Co., Inc.

25- 4s- 31w Rawlings,KS

250 N Water STE 300
Wichita, KS 67202

Dellere #1-25

Job Ticket: 56375

DST#: 3

ATTN: Robert Hendrix

Test Start: 2014.03.29 @ 14:43:00

Tool Information

Drill Pipe:	Length: 3842.00 ft	Diameter: 3.80 inches	Volume: 53.89 bbl	Tool Weight: 2000.00 lb
Heavy Wt. Pipe:	Length: 0.00 ft	Diameter: 0.00 inches	Volume: 0.00 bbl	Weight set on Packer: 30000.00 lb
Drill Collar:	Length: 207.00 ft	Diameter: 2.25 inches	Volume: 1.02 bbl	Weight to Pull Loose: 100000.0 lb
			<u>Total Volume: 54.91 bbl</u>	Tool Chased 0.00 ft
Drill Pipe Above KB:	31.00 ft			String Weight: Initial 74000.00 lb
Depth to Top Packer:	4046.00 ft			Final 78000.00 lb
Depth to Bottom Packer:	ft			
Interval between Packers:	65.00 ft			
Tool Length:	93.00 ft			
Number of Packers:	2	Diameter: 6.75 inches		

Tool Comments:

Tool Description

Tool Description	Length (ft)	Serial No.	Position	Depth (ft)	Accum. Lengths
Change Over Sub	1.00			4019.00	
Shut In Tool	5.00			4024.00	
Hydraulic tool	5.00			4029.00	
Jars	5.00			4034.00	
Safety Joint	3.00			4037.00	
Packer	5.00			4042.00	28.00 Bottom Of Top Packer
Packer	4.00			4046.00	
Stubb	1.00			4047.00	
Recorder	0.00	6772	Outside	4047.00	
Recorder	0.00	8845	Inside	4047.00	
Perforations	26.00			4073.00	
Change Over Sub	1.00			4074.00	
Drill Pipe	31.00			4105.00	
Change Over Sub	1.00			4106.00	
Bullnose	5.00			4111.00	65.00 Bottom Packers & Anchor

Total Tool Length: 93.00



**TRILOBITE
TESTING, INC**

DRILL STEM TEST REPORT

FLUID SUMMARY

Murfin Drilling Co., Inc.

25- 4s- 31w Rawlings,KS

250 N Water STE 300
Wichita, KS 67202

Dellere #1-25

Job Ticket: 56375

DST#: 3

ATTN: Robert Hendrix

Test Start: 2014.03.29 @ 14:43:00

Mud and Cushion Information

Mud Type: Gel Chem

Cushion Type:

Oil API:

39 deg API

Mud Weight: 9.00 lb/gal

Cushion Length:

ft

Water Salinity:

ppm

Viscosity: 60.00 sec/qt

Cushion Volume:

bbl

Water Loss: 5.99 in³

Gas Cushion Type:

Resistivity: 0.00 ohm.m

Gas Cushion Pressure:

psig

Salinity: 1000.00 ppm

Filter Cake: 2.00 inches

Recovery Information

Recovery Table

Length ft	Description	Volume bbl
1290.00	GO 30g 70o	16.210
0.00	1700' GIP	0.000

Total Length: 1290.00 ft Total Volume: 16.210 bbl

Num Fluid Samples: 0

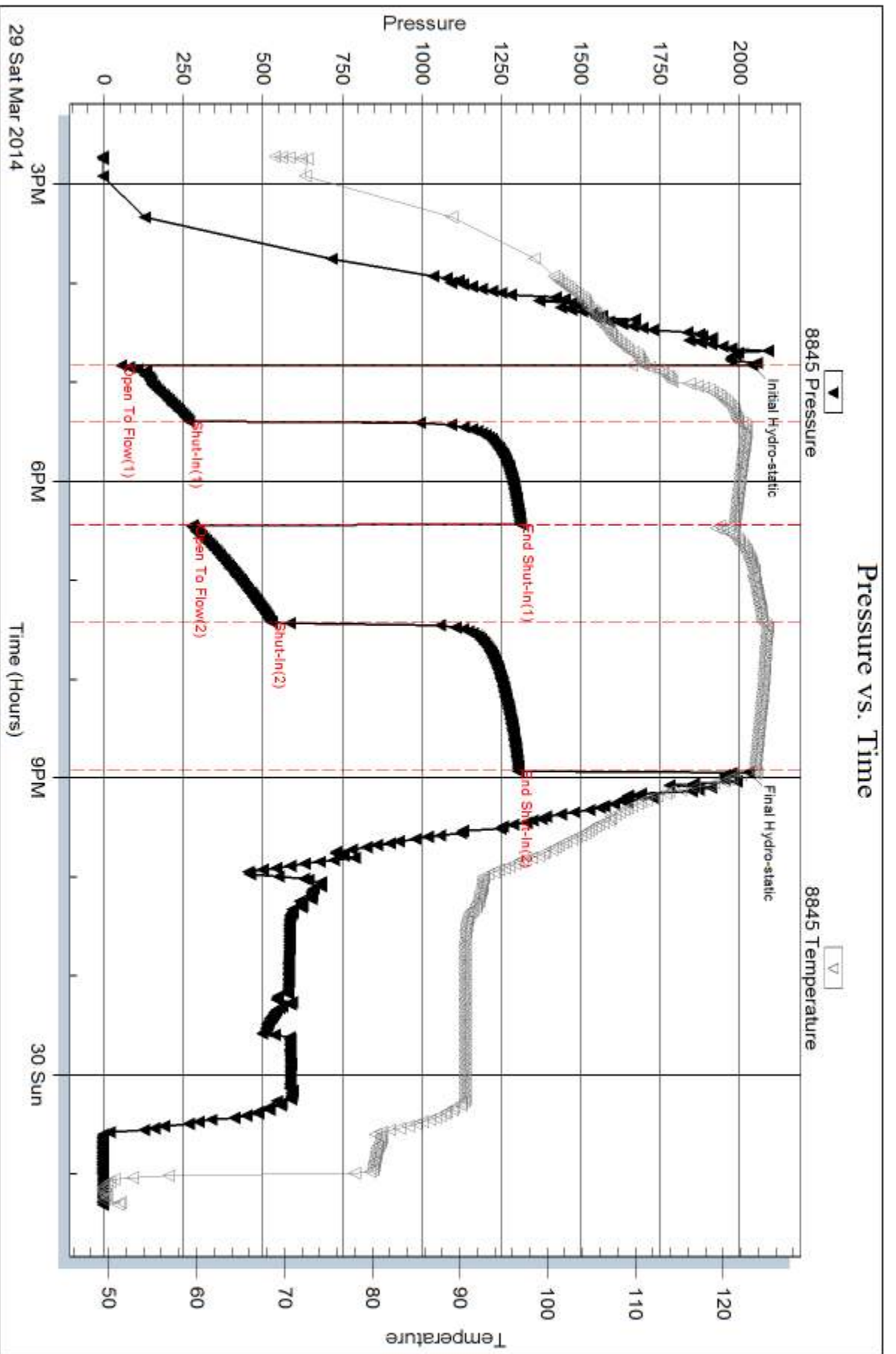
Num Gas Bombs: 0

Serial #:

Laboratory Name:

Laboratory Location:

Recovery Comments: Oil API: 39 @ 60 degrees= 39 deg API

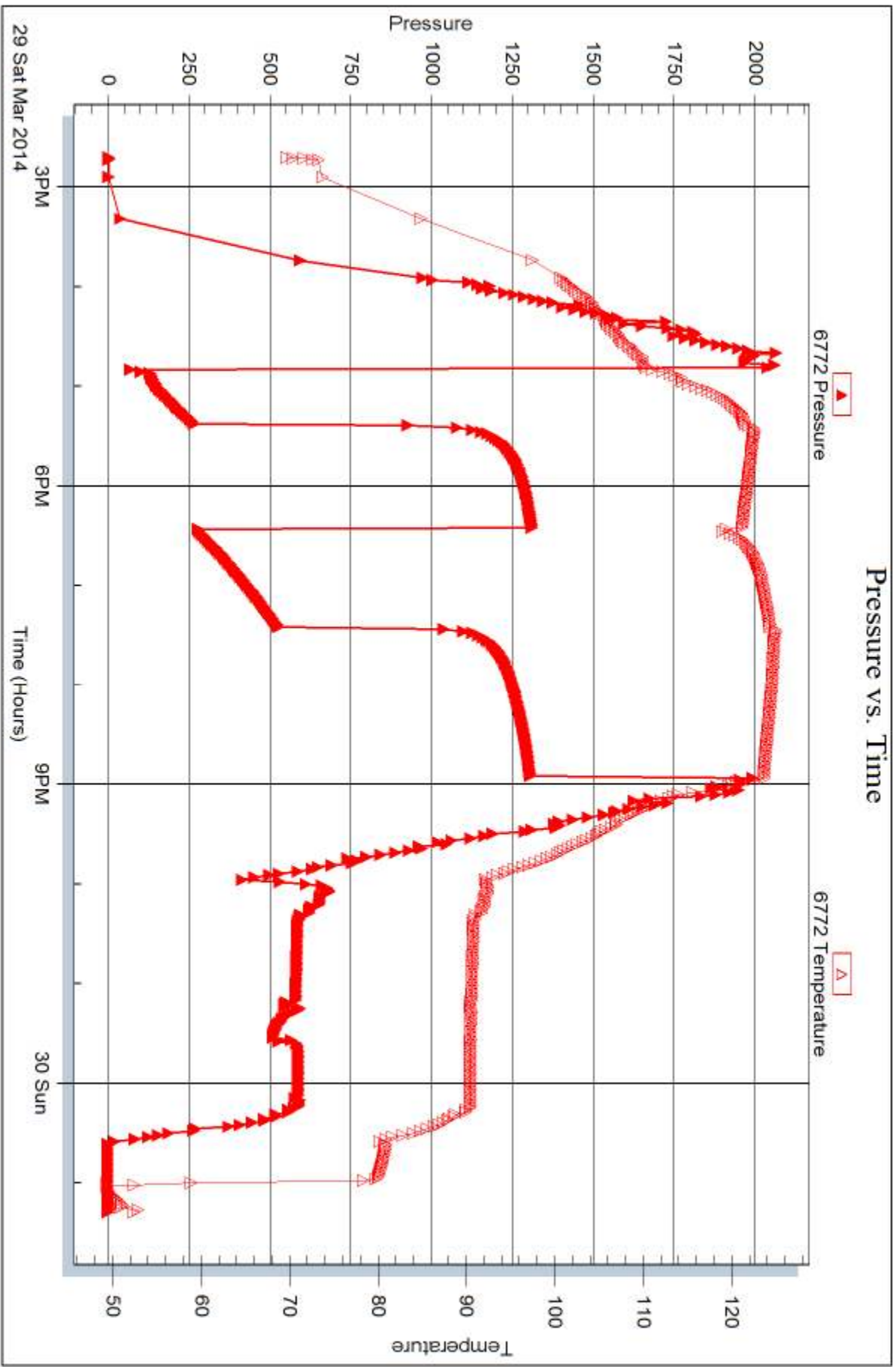


Serial #: 6772

Outside Murfin Drilling Co., Inc.

Delere #1-25

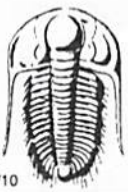
DST Test Number: 3



Trilobite Testing, Inc

Ref. No: 56375

Printed: 2014.04.02 @ 16:22:26



TRILOBITE TESTING INC.

1515 Commerce Parkway • Hays, Kansas 67601

Test Ticket

NO. **56373**

Well Name & No. Dellere #1-25 Test No. 1 Date 3/27/14
 Company Murkin Drilling Co., Inc Elevation 2910 KB 2809 GL
 Address 250 N Water STE 300 Wichita, KS 67202
 Co. Rep / Geo. Robert Hendrix Rig Murkin #2
 Location: Sec. 25 Twp. 4S Rge. 31W Co. Rawlins State KS

Interval Tested 3894-3980 Zone Tested Trenton-Lansing "B"
 Anchor Length 86' Drill Pipe Run 3689 Mud Wt. 9.0
 Top Packer Depth 3890 Drill Collars Run 207 Vis 60
 Bottom Packer Depth 3894 Wt. Pipe Run 0 WL 60
 Total Depth 3980 Chlorides 1000 ppm System LCM 4

Blow Description IF: 4 1/2" Blow.
ISF: No Return.
FF: 8 1/4" Blow
FSB: 1/4" Return

Rec	Feet of	%gas	%oil	%water	%mud
<u>140</u>	<u>60CM</u>	<u>10</u>	<u>40</u>	<u>50</u>	
Rec	Feet of	%gas	%oil	%water	%mud
Rec	Feet of	%gas	%oil	%water	%mud
Rec	Feet of	%gas	%oil	%water	%mud

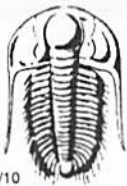
Rec Total 140 BHT 113 Gravity — API RW — @ — °F Chlorides — ppm

(A) Initial Hydrostatic	<u>1885</u>	<input checked="" type="checkbox"/> Test	<u>1150</u>	T-On Location	<u>21:10</u>
(B) First Initial Flow	<u>16</u>	<input checked="" type="checkbox"/> Jars	<u>250</u>	T-Started	<u>22:08</u>
(C) First Final Flow	<u>43</u>	<input checked="" type="checkbox"/> Safety Joint	<u>75</u>	T-Open	<u>20:22</u>
(D) Initial Shut-In	<u>1158</u>	<input checked="" type="checkbox"/> Circ Sub	<u>N/C</u>	T-Pulled	<u>24:26</u>
(E) Second Initial Flow	<u>52</u>	<input checked="" type="checkbox"/> Hourly Standby		T-Out	<u>06:31</u>
(F) Second Final Flow	<u>79</u>	<input checked="" type="checkbox"/> Mileage	<u>192 R/T</u>	Comments	
(G) Final Shut-In	<u>1117</u>	<input checked="" type="checkbox"/> Sampler	<u>50rt 77.50</u>		
(H) Final Hydrostatic	<u>1287</u>	<input type="checkbox"/> Straddle		<input type="checkbox"/> Ruined Shale Packer	

Initial Open 30 Shale Packer
 Initial Shut-In 60 Extra Packer
 Final Flow 60 Extra Recorder
 Final Shut-In 90 Day Standby
 Accessibility
 Sub Total 1552.50

Approved By [Signature] Our Representative [Signature]

Trilobite Testing Inc. shall not be liable for damaged of any kind of the property or personnel of the one for whom a test is made, or for any loss suffered or sustained, directly or indirectly, through the use of its equipment, or its statements or opinion concerning the results of any test, tools lost or damaged in the hole shall be paid for at cost by the party for whom the test is made.



TRILOBITE TESTING INC.

1515 Commerce Parkway • Hays, Kansas 67601

Test Ticket

NO. 56374

Well Name & No. Dellere #1-25 Test No. 2 Date 3/28/14
 Company Murfin Drilling CO., Inc Elevation 2910 KB 2899 GL
 Address 250 N Water STE 300 Wichita, KS 67202
 Co. Rep / Geo. Robert Hendrix Rig Murfin #2
 Location: Sec. 25 Twp. 48 Rge. 31W Co. Rawlins State KS

Interval Tested 3998 - 4023 Zone Tested Lansing "E-R"
 Anchor Length 25' Drill Pipe Run 3783 Mud Wt. 9.1
 Top Packer Depth 3994 Drill Collars Run 207 Vis 57
 Bottom Packer Depth 3988 Wt. Pipe Run 0 WL 5.6
 Total Depth 4023 Chlorides 1000 ppm System LCM 6

Blow Description EE: 4" Blow died back to weak surface Blow
ESB: No Return
EE: NO Blow
ESB: NO Return

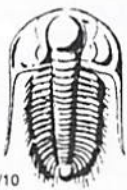
Rec	Feet of	%gas	%oil	%water	%mud
<u>5</u>	<u>Mud (oil spots)</u>			<u>100</u>	
Rec	Feet of	%gas	%oil	%water	%mud
Rec	Feet of	%gas	%oil	%water	%mud
Rec	Feet of	%gas	%oil	%water	%mud

Rec Total 5 BHT 115 Gravity - API RW - @ - °F Chlorides - ppm

(A) Initial Hydrostatic <u>1972</u>	<input checked="" type="checkbox"/> Test <u>1250</u>	T-On Location <u>17:00</u>
(B) First Initial Flow <u>12</u>	<input checked="" type="checkbox"/> Jars <u>250</u>	T-Started <u>17:20</u>
(C) First Final Flow <u>13</u>	<input type="checkbox"/> Safety Joint <u>75</u>	T-Open <u>19:08</u>
(D) Initial Shut-In <u>366</u>	<input checked="" type="checkbox"/> Circ Sub <u>N/C</u>	T-Pulled <u>22:13</u>
(E) Second Initial Flow <u>18</u>	<input type="checkbox"/> Hourly Standby	T-Out <u>00:10</u>
(F) Second Final Flow <u>18</u>	<input checked="" type="checkbox"/> Mileage <u>192 R/T</u> 77.50	Comments _____
(G) Final Shut-In <u>87</u>	<input type="checkbox"/> Sampler _____	
(H) Final Hydrostatic <u>1931</u>	<input type="checkbox"/> Straddle _____	<input type="checkbox"/> Ruined Shale Packer _____
Initial Open <u>30</u>	<input type="checkbox"/> Shale Packer _____	<input type="checkbox"/> Ruined Packer _____
Initial Shut-In <u>60</u>	<input type="checkbox"/> Extra Packer _____	<input type="checkbox"/> Extra Copies _____
Final Flow <u>30</u>	<input type="checkbox"/> Extra Recorder _____	Sub Total <u>0</u>
Final Shut-In <u>60</u>	<input type="checkbox"/> Day Standby _____	Total <u>1552.50</u>
	<input type="checkbox"/> Accessibility _____	MP/DST Disc't _____
	Sub Total <u>1552.50</u>	

Approved By [Signature] Our Representative [Signature]

Trilobite Testing Inc. shall not be liable for damaged of any kind of the property or personnel of the one for whom a test is made, or for any loss suffered or sustained, directly or indirectly, through the use of its equipment, or its statements or opinion concerning the results of any test, tools lost or damaged in the hole shall be paid for at cost by the party for whom the test is made.



TRILOBITE TESTING INC.

1515 Commerce Parkway • Hays, Kansas 67601

Test Ticket

NO. 56375

Well Name & No. Dellere #1-25 Test No. 3 Date 3/29/14
 Company Murfin Drilling Co., Inc. Elevation 2910 KB 2899 GL
 Address 250 N Water STE 300 Wichita, KS 67202
 Co. Rep / Geo. Robert Hendrix Rig Murfin #2
 Location: Sec. 25 Twp. 4S Rge. 31 W Co. Rawlins State Ks

Interval Tested 4046-4111 Zone Tested Lansing "H-J"
 Anchor Length 65' Drill Pipe Run 3842 Mud Wt. 9.1
 Top Packer Depth 4042 Drill Collars Run 207 Vis 57
 Bottom Packer Depth 4046 Wt. Pipe Run Ø WL 6.0
 Total Depth 4111 Chlorides 1500 ppm System LCM 5

Blow Description IF: BOB @ 2 1/2 min.
TSB: Bled off for 6 min. BOB Return @ 16 min.
FF: BOB Immediately.
FSB: Bled off for 6 min BOB Return @ 14 min.

Rec	Feet of	%gas	%oil	%water	%mud
<u>1290'</u>	<u>60</u>	<u>30</u>	<u>70</u>		
Rec	Feet of	%gas	%oil	%water	%mud
Rec	Feet of	%gas	%oil	%water	%mud
Rec	Feet of	%gas	%oil	%water	%mud
Rec	Feet of	%gas	%oil	%water	%mud

Rec Total 290' BHT 12.5 Gravity 39 API RW - @ - °F Chlorides - ppm

(A) Initial Hydrostatic	<u>2039</u>	<input checked="" type="checkbox"/> Test	<u>1250</u>	T-On Location	<u>14:30</u>
(B) First Initial Flow	<u>55</u>	<input checked="" type="checkbox"/> Jars	<u>250</u>	T-Started	<u>14:43</u>
(C) First Final Flow	<u>268</u>	<input checked="" type="checkbox"/> Safety Joint	<u>75</u>	T-Open	<u>16:50</u>
(D) Initial Shut-In	<u>1312</u>	<input checked="" type="checkbox"/> Circ Sub	<u>USED 50</u>	T-Pulled	<u>20:55</u>
(E) Second Initial Flow	<u>280</u>	<input checked="" type="checkbox"/> Hourly Standby	<u>9 3/4</u>	T-Out	<u>01:19</u>
(F) Second Final Flow	<u>528</u>	<input checked="" type="checkbox"/> Mileage	<u>192 R/T X 2</u>	Comments	<u>Gravity: 39 @ 60 = 39</u>
(G) Final Shut-In	<u>1305</u>	<input type="checkbox"/> Sampler	<u>155</u>		<u>Reversed fluid into truck 8:44</u>
(H) Final Hydrostatic	<u>2028</u>	<input type="checkbox"/> Straddle	<u>loaded tools @</u>	<input type="checkbox"/> Ruined Shale Packer	

Initial Open 30
 Initial Shut-In 60
 Final Flow 60
 Final Shut-In 90

Shale Packer 11:00am 3/31/14
 Extra Packer
 Extra Recorder
 Day Standby X 1 1d 9.75h
 Accessibility
 Sub Total 1780

Ruined Packer
 Extra Copies
 Sub Total 800
 Total 2580
 MP/DST Disc't

Approved By _____ Our Representative

Trilobite Testing Inc. shall not be liable for damaged of any kind of the property or personnel of the one for whom a test is made, or for any loss suffered or sustained, directly or indirectly, through the use of its equipment, or its statements or opinion concerning the results of any test, tools lost or damaged in the hole shall be paid for at cost by the party for whom the test is made.