



**TRILOBITE TESTING, INC.**

# DRILL STEM TEST REPORT

Woolsey Operating Co  
 125 N Market Ste 1000  
 Wichita, KS 67202  
 ATTN: Bill Klaver

**13-35S-13W Barber**  
**Meyers 1-A**  
 Job Ticket: 51965 **DST#: 2**  
 Test Start: 2014.03.11 @ 16:05:22

## GENERAL INFORMATION:

Formation: **Mississippi**  
 Deviated: No Whipstock: ft (KB)  
 Time Tool Opened: 18:54:40  
 Time Test Ended: 01:59:47  
 Test Type: Conventional Bottom Hole (Reset)  
 Tester: Leal Cason  
 Unit No: 74  
 Interval: **4850.00 ft (KB) To 4894.00 ft (KB) (TVD)**  
 Total Depth: 4894.00 ft (KB) (TVD)  
 Hole Diameter: 7.88 inches Hole Condition: Good  
 Reference Elevations: 1448.00 ft (KB)  
 1436.00 ft (CF)  
 KB to GR/CF: 12.00 ft

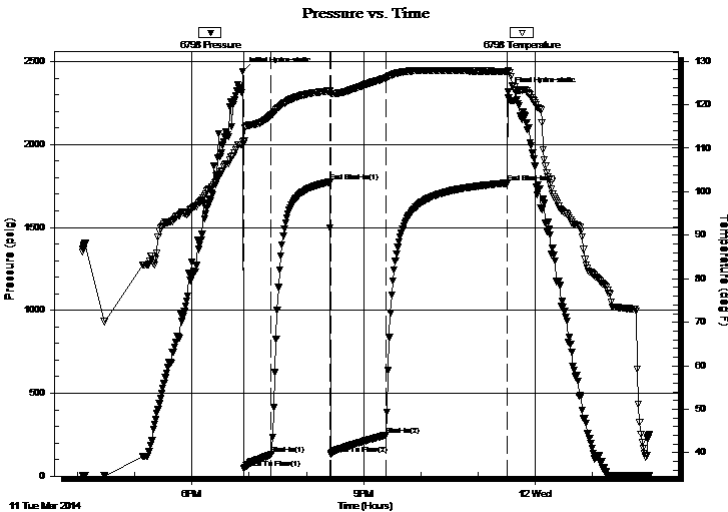
## Serial #: 6798

Inside

Press@RunDepth: 245.89 psig @ 4851.00 ft (KB) Capacity: 8000.00 psig  
 Start Date: 2014.03.11 End Date: 2014.03.12 Last Calib.: 2014.03.12  
 Start Time: 16:05:24 End Time: 01:59:47 Time On Btm: 2014.03.11 @ 18:53:10  
 Time Off Btm: 2014.03.11 @ 23:31:39

TEST COMMENT: IF: Strong Blow , BOB in 45 seconds  
 IS: No Blow Back  
 FF: Strong Blow , BOB in 90 seconds  
 FS: No Blow Back

## PRESSURE SUMMARY



Time (Min.)	Pressure (psig)	Temp (deg F)	Annotation
0	2441.36	111.37	Initial Hydro-static
2	45.96	111.76	Open To Flow (1)
30	130.10	117.56	Shut-In(1)
91	1772.90	123.15	End Shut-In(1)
93	129.63	122.54	Open To Flow (2)
150	245.89	126.12	Shut-In(2)
278	1766.62	127.68	End Shut-In(2)
279	2316.43	127.71	Final Hydro-static

## Recovery

Length (ft)	Description	Volume (bbl)
0.00	3818 GIP	0.00
235.00	Water	1.16
63.00	SOMCW 5%O 30%M 65%W	0.88
83.00	GSOCM 10%G 5%O 85%M	1.16

\* Recovery from multiple tests

## Gas Rates

Choke (inches)	Pressure (psig)	Gas Rate (Mcf/d)



**TRILOBITE  
TESTING, INC**

# DRILL STEM TEST REPORT

**FLUID SUMMARY**

Woolsey Operating Co

**13-35S-13W Barber**

125 N Market Ste 1000  
Wichita, KS 67202

**Meyers 1-A**

Job Ticket: 51965

**DST#: 2**

ATTN: Bill Klaver

Test Start: 2014.03.11 @ 16:05:22

## Mud and Cushion Information

Mud Type: Gel Chem

Cushion Type:

Oil API:

deg API

Mud Weight: 9.00 lb/gal

Cushion Length:

ft

Water Salinity:

115000 ppm

Viscosity: 52.00 sec/qt

Cushion Volume:

bbf

Water Loss: 8.98 in<sup>3</sup>

Gas Cushion Type:

Resistivity: ohm.m

Gas Cushion Pressure:

psig

Salinity: 2000.00 ppm

Filter Cake: 0.02 inches

## Recovery Information

Recovery Table

Length ft	Description	Volume bbf
0.00	3818 GIP	0.000
235.00	Water	1.156
63.00	SOMCW 5%O 30%M 65%W	0.884
83.00	GSOCM 10%G 5%O 85%M	1.164

Total Length: 381.00 ft      Total Volume: 3.204 bbf

Num Fluid Samples: 0

Num Gas Bombs: 0

Serial #:

Laboratory Name:

Laboratory Location:

Recovery Comments: RW w as .13 @ 40 degrees

### Pressure vs. Time

