



TRILOBITE TESTING, INC.

DRILL STEM TEST REPORT

Deutsch Oil Company

28-21s-13w Stafford, Co.

8100 E 22nd St. N.
Wichita, Ks. 67226

Batman-Moorison #1

ATTN: Eldon Schierling

Job Ticket: 51930

DST#: 1

Test Start: 2014.02.07 @ 04:19:04

GENERAL INFORMATION:

Formation: **Arbuckle**

Deviated: No Whipstock: 0.00 ft (KB)

Time Tool Opened: 09:22:34

Time Test Ended: 17:29:34

Test Type: Conventional Bottom Hole (Initial)

Tester: Gary Pevoteaux

Unit No: 53

Interval: 3687.00 ft (KB) To 3705.00 ft (KB) (TVD)

Reference Elevations: 1893.00 ft (KB)

Total Depth: 3705.00 ft (KB) (TVD)

1885.00 ft (CF)

Hole Diameter: 7.88 inches Hole Condition: Fair

KB to GR/CF: 8.00 ft

Serial #: 6719 Outside

Press @ Run Depth: 1161.10 psig @ 3688.00 ft (KB)

Capacity: 8000.00 psig

Start Date: 2014.02.07

End Date: 2014.02.07

Last Calib.: 2014.02.07

Start Time: 04:19:09

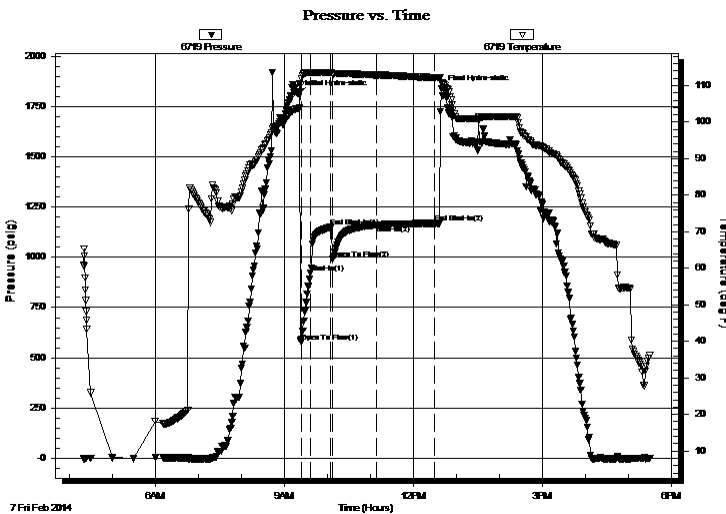
End Time: 17:29:34

Time On Btm: 2014.02.07 @ 09:19:34

Time Off Btm: 2014.02.07 @ 12:38:34

TEST COMMENT: IF: Strong blow . B.O.B. in 20 secs.
IS: Fair blow . B.O.B. 10 mins.
FF: Strong blow . B.O.B. in 10 secs. G.T.S. in 10 mins.
FS: Weak blow . surf. - B.O.B. in 63 mins.

PRESSURE SUMMARY



Time (Min.)	Pressure (psig)	Temp (deg F)	Annotation
0	1810.99	103.70	Initial Hydro-static
3	578.22	110.34	Open To Flow (1)
16	920.93	113.54	Shut-In(1)
45	1149.63	113.49	End Shut-In(1)
48	991.13	113.17	Open To Flow (2)
109	1161.10	112.88	Shut-In(2)
190	1169.48	112.23	End Shut-In(2)
199	1836.35	110.84	Final Hydro-static

Recovery

Length (ft)	Description	Volume (bbl)
120.00	WCMGO 5%w 15%g 40%m 40%o	0.59
3080.00	CGO 32%g 68%o	33.20

Gas Rates

Choke (inches)	Pressure (psig)	Gas Rate (Mcf/d)



**TRILOBITE
TESTING, INC.**

DRILL STEM TEST REPORT

Deutsch Oil Company

28-21s-13w Stafford, Co.

8100 E 22nd St. N.
Wichita, Ks. 67226

Batman-Moorison #1

Job Ticket: 51930

DST#: 1

ATTN: Eldon Schierling

Test Start: 2014.02.07 @ 04:19:04

GENERAL INFORMATION:

Formation: **Arbuckle**

Deviated: No Whipstock: 0.00 ft (KB)

Time Tool Opened: 09:22:34

Time Test Ended: 17:29:34

Test Type: Conventional Bottom Hole (Initial)

Tester: Gary Pevoteaux

Unit No: 53

Interval: 3687.00 ft (KB) To 3705.00 ft (KB) (TVD)

Reference Elevations: 1893.00 ft (KB)

Total Depth: 3705.00 ft (KB) (TVD)

1885.00 ft (CF)

Hole Diameter: 7.88 inches Hole Condition: Fair

KB to GR/CF: 8.00 ft

Serial #: 6773 Outside

Press @ Run Depth: psig @ 3688.00 ft (KB)

Capacity: 8000.00 psig

Start Date: 2014.02.07 End Date: 2014.02.07

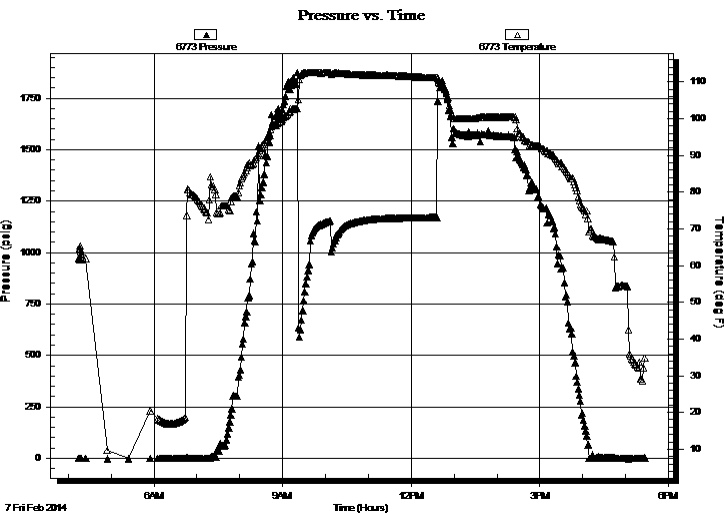
Last Calib.: 2014.02.07

Start Time: 04:14:36 End Time: 17:26:31

Time On Btm:

Time Off Btm:

TEST COMMENT: IF: Strong blow . B.O.B. in 20 secs.
IS: Fair blow . B.O.B. 10 mins.
FF: Strong blow . B.O.B. in 10 secs. G.T.S. in 10 mins.
FS: Weak blow . surf. - B.O.B. in 63 mins.



PRESSURE SUMMARY

Time (Min.)	Pressure (psig)	Temp (deg F)	Annotation

Recovery

Length (ft)	Description	Volume (bbl)
120.00	WCMGO 5%w 15%g 40%m 40%o	0.59
3080.00	CGO 32%g 68%o	33.20

Gas Rates

	Choke (inches)	Pressure (psig)	Gas Rate (Mcf/d)



**TRILOBITE
TESTING, INC.**

DRILL STEM TEST REPORT

FLUID SUMMARY

Deutsch Oil Company

28-21s-13w Stafford, Co.

8100 E 22nd St. N.
Wichita, Ks. 67226

Batman-Moorison #1

Job Ticket: 51930

DST#: 1

ATTN: Eldon Schierling

Test Start: 2014.02.07 @ 04:19:04

Mud and Cushion Information

Mud Type: Gel Chem

Cushion Type:

Oil API:

deg API

Mud Weight: 9.00 lb/gal

Cushion Length:

ft

Water Salinity:

5100 ppm

Viscosity: 46.00 sec/qt

Cushion Volume:

bbbl

Water Loss: 7.99 in³

Gas Cushion Type:

Resistivity: 0.00 ohm.m

Gas Cushion Pressure:

psig

Salinity: 5100.00 ppm

Filter Cake: 0.20 inches

Recovery Information

Recovery Table

Length ft	Description	Volume bbl
120.00	WCMGO 5%w 15%g 40%m 40%o	0.590
3080.00	CGO 32%g 68%o	33.200

Total Length: 3200.00 ft

Total Volume: 33.790 bbl

Num Fluid Samples: 0

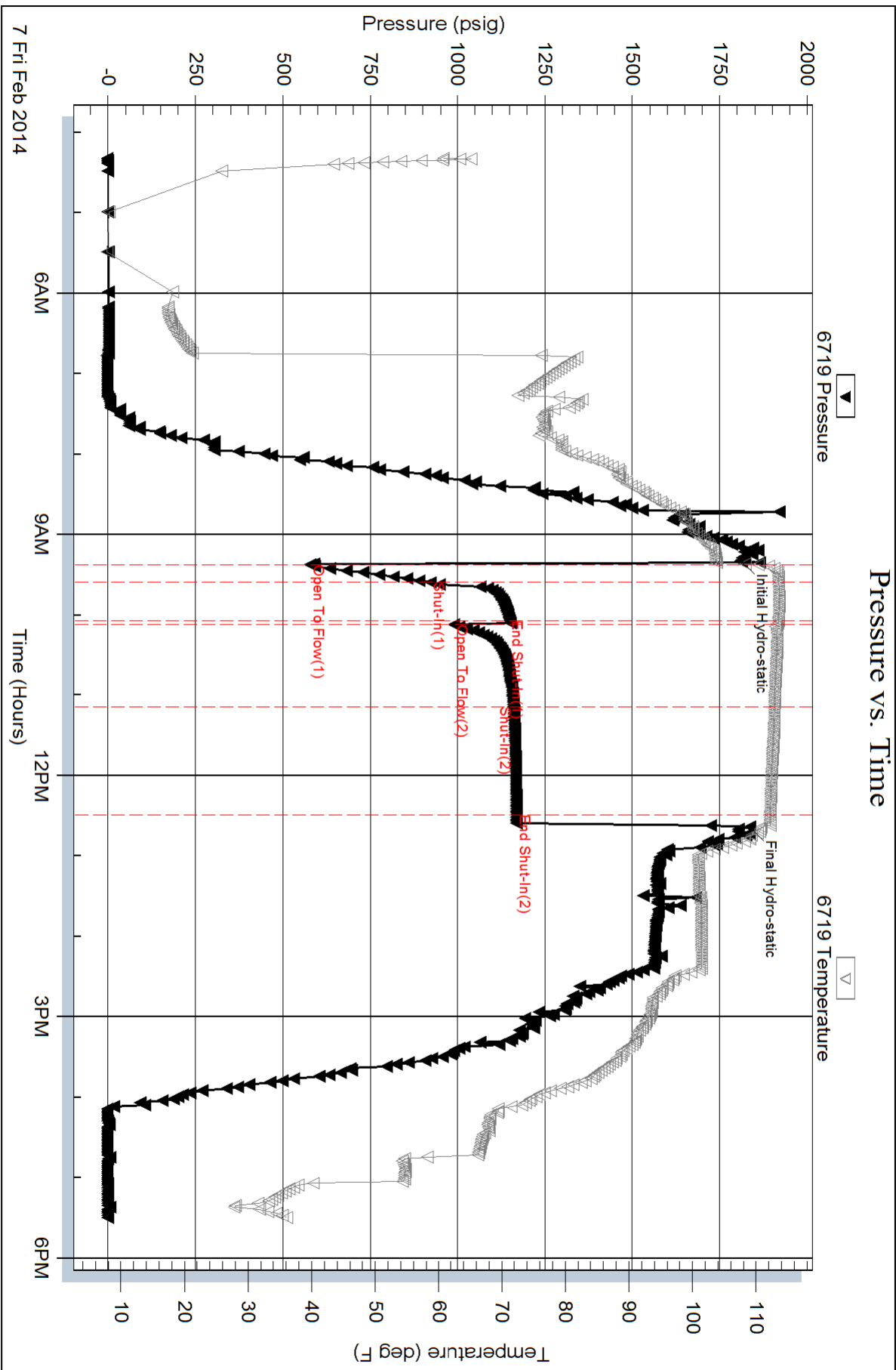
Num Gas Bombs: 0

Serial #: none

Laboratory Name:

Laboratory Location:

Recovery Comments:



Serial #: 6773

Outside Deutsch Oil Company

Batman-Morrisson #1

DST Test Number: 1

