



**TRILOBITE  
TESTING, INC**

# DRILL STEM TEST REPORT

Red Oak Energy  
7701 EAST KELLOG DR.  
SUITE 700 WICHITA KS  
67202  
ATTN: DEBBY ROGERS/ SEAN D

**SEC. 35 - 29 s. -16 w./ Kiowa**  
**Headquarters #2-35**  
Job Ticket: 56174      **DST#: 1**  
Test Start: 2014.04.03 @ 02:25:00

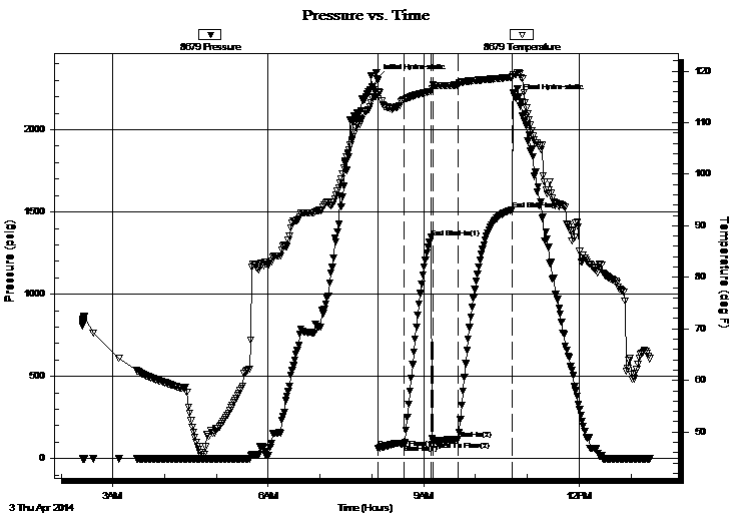
## GENERAL INFORMATION:

Formation: **Mississippi**  
Deviated: No Whipstock: ft (KB)  
Time Tool Opened: 08:07:30  
Time Test Ended: 13:21:30  
Interval: **4520.00 ft (KB) To 4608.00 ft (KB) (TVD)**  
Total Depth: 4608.00 ft (KB) (TVD)  
Hole Diameter: 7.88 inches Hole Condition: Good  
Test Type: Conventional Bottom Hole (Initial)  
Tester: Bob Hamel  
Unit No: 67  
Reference Elevations: 1890.00 ft (KB)  
1880.00 ft (CF)  
KB to GR/CF: 10.00 ft

**Serial #: 8679**      **Inside**  
Press@RunDepth: 117.34 psig @ 4589.00 ft (KB)      Capacity: 8000.00 psig  
Start Date: 2014.04.03      End Date: 2014.04.03      Last Calib.: 2014.04.03  
Start Time: 02:25:01      End Time: 13:21:30      Time On Btm: 2014.04.03 @ 08:06:00  
Time Off Btm: 2014.04.03 @ 10:47:00

**TEST COMMENT:** I.F. - 30 - 1/2" INT. BLOW BUILT TO (B.O.B. IN 2 MIN.)  
I.S.I. - 30 - NO B.B.  
F.F. - 30 - B.O.B. INSTANTLY (GAS TO SURFACE)  
F.S.I. - 60 - NO B.B.

## PRESSURE SUMMARY



Time (Min.)	Pressure (psig)	Temp (deg F)	Annotation
0	2311.09	115.50	Initial Hydro-static
2	61.15	115.71	Open To Flow (1)
32	88.82	114.44	Shut-In(1)
62	1344.27	116.05	End Shut-In(1)
65	107.02	117.29	Open To Flow (2)
94	117.34	117.31	Shut-In(2)
157	1513.71	118.83	End Shut-In(2)
161	2187.05	119.35	Final Hydro-static

## Recovery

Length (ft)	Description	Volume (bbl)
126.00	O,C,M, 20% OIL 80% MUD	0.62
131.00	S,O,C,G,M, 15% OIL 20% GAS 65% MUD	1.03
0.00	4351' GTS	0.00

## Gas Rates

	Choke (inches)	Pressure (psig)	Gas Rate (Mcf/d)
First Gas Rate	0.13	2.00	6.03



**TRILOBITE  
TESTING, INC**

# DRILL STEM TEST REPORT

**FLUID SUMMARY**

Red Oak Energy

**SEC. 35 - 29 s. -16 w./ Kiowa**

7701 EAST KELLOG DR.  
SUITE 700 WICHITA KS  
67202

**Headquarters #2-35**

Job Ticket: 56174

**DST#: 1**

ATTN: DEBBY ROGERS/ SEAN D

Test Start: 2014.04.03 @ 02:25:00

## Mud and Cushion Information

Mud Type: Gel Chem

Cushion Type:

Oil API:

deg API

Mud Weight: 9.00 lb/gal

Cushion Length:

ft

Water Salinity:

ppm

Viscosity: 49.00 sec/qt

Cushion Volume:

bbbl

Water Loss: 9.59 in<sup>3</sup>

Gas Cushion Type:

Resistivity: 0.00 ohm.m

Gas Cushion Pressure:

psig

Salinity: 11000.00 ppm

Filter Cake: 1.00 inches

## Recovery Information

Recovery Table

Length ft	Description	Volume bbbl
126.00	O,C,M, 20% OIL 80% MUD	0.620
131.00	S,O,C,G,M, 15% OIL 20% GAS 65% MUD	1.026
0.00	4351' GTS	0.000

Total Length: 257.00 ft      Total Volume: 1.646 bbl

Num Fluid Samples: 0

Num Gas Bombs: 0

Serial #:

Laboratory Name:

Laboratory Location:

Recovery Comments:

