



DRILL STEM TEST REPORT

Prepared For: **Landmark Resources, Inc**

1616 S Voss Rd. STE 600
Houston TX 77057

ATTN: Terry McLeod

Janzen Unit #1

1-17s-34w Scott,KS

Start Date: 2014.05.26 @ 16:13:15

End Date: 2014.05.26 @ 23:48:30

Job Ticket #: 57657 DST #: 1

Trilobite Testing, Inc
PO Box 362 Hays, KS 67601
ph: 785-625-4778 fax: 785-625-5620

Printed: 2014.05.30 @ 12:02:56



TRILOBITE TESTING, INC

DRILL STEM TEST REPORT

Landmark Resources, Inc
 1616 S Voss Rd. STE 600
 Houston TX 77057
 ATTN: Terry McLeod

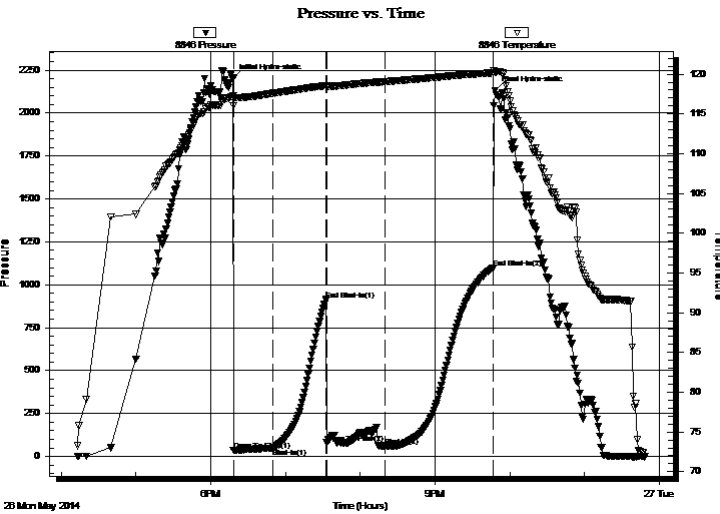
1-17s-34w Scott,KS
Janzen Unit #1
 Job Ticket: 57657 **DST#: 1**
 Test Start: 2014.05.26 @ 16:13:15

GENERAL INFORMATION:

Formation: **Marmaton**
 Deviated: No Whipstock: ft (KB)
 Time Tool Opened: 18:18:15
 Time Test Ended: 23:48:30
 Interval: **4399.00 ft (KB) To 4460.00 ft (KB) (TVD)**
 Total Depth: 4460.00 ft (KB) (TVD)
 Hole Diameter: 7.88 inches Hole Condition: Fair
 Test Type: Conventional Bottom Hole (Initial)
 Tester: Mike Roberts
 Unit No: 65
 Reference Elevations: 3102.00 ft (KB)
 3091.00 ft (CF)
 KB to GR/CF: 11.00 ft

Serial #: 8846 Inside
 Press@RunDepth: 61.79 psig @ 4402.00 ft (KB) Capacity: 8000.00 psig
 Start Date: 2014.05.26 End Date: 2014.05.26 Last Calib.: 2014.05.27
 Start Time: 16:13:15 End Time: 23:48:30 Time On Btm: 2014.05.26 @ 18:18:00
 Time Off Btm: 2014.05.26 @ 21:48:00

TEST COMMENT: IF: Built to 1" blow
 IS: No return blow
 FF: No blow
 FS: No return blow



PRESSURE SUMMARY

Time (Min.)	Pressure (psig)	Temp (deg F)	Annotation
0	2201.22	117.23	Initial Hydro-static
1	34.18	116.07	Open To Flow (1)
32	48.74	117.57	Shut-In(1)
75	914.01	118.56	End Shut-In(1)
75	78.98	118.41	Open To Flow (2)
122	61.79	119.05	Shut-In(2)
209	1097.86	120.16	End Shut-In(2)
210	2131.28	120.23	Final Hydro-static

Recovery

Length (ft)	Description	Volume (bbl)
60.00	ocm 2%o 98% m	0.30
2.00	free oil 100%o	0.01

Gas Rates

Choke (inches)	Pressure (psig)	Gas Rate (MMcf/d)



**TRILOBITE
TESTING, INC**

DRILL STEM TEST REPORT

TOOL DIAGRAM

Landmark Resources, Inc

1-17s-34w Scott,KS

1616 S Voss Rd. STE 600
Houston TX 77057

Janzen Unit #1

Job Ticket: 57657

DST#: 1

ATTN: Terry McLeod

Test Start: 2014.05.26 @ 16:13:15

Tool Information

Drill Pipe:	Length: 4156.00 ft	Diameter: 3.80 inches	Volume: 58.30 bbl	Tool Weight: 1500.00 lb
Heavy Wt. Pipe:	Length: 0.00 ft	Diameter: 0.00 inches	Volume: 0.00 bbl	Weight set on Packer: 20000.00 lb
Drill Collar:	Length: 249.00 ft	Diameter: 2.25 inches	Volume: 1.22 bbl	Weight to Pull Loose: 100000.0 lb
			<u>Total Volume: 59.52 bbl</u>	Tool Chased 0.00 ft
Drill Pipe Above KB:	25.00 ft			String Weight: Initial 80000.00 lb
Depth to Top Packer:	4399.00 ft			Final 80000.00 lb
Depth to Bottom Packer:	ft			
Interval between Packers:	61.00 ft			
Tool Length:	80.00 ft			
Number of Packers:	2	Diameter: 6.75 inches		
Tool Comments:				

Tool Description

Tool Description	Length (ft)	Serial No.	Position	Depth (ft)	Accum. Lengths
Change Over Sub	1.00			4381.00	
Shut In Tool	5.00			4386.00	
Hydraulic tool	5.00			4391.00	
Safety Joint	3.00			4394.00	
Packer	5.00			4399.00	19.00 Bottom Of Top Packer
Packer - Shale	0.00			4399.00	
Stubb	1.00			4400.00	
Perforations	2.00			4402.00	
Recorder	0.00	8846	Inside	4402.00	
Recorder	0.00	8737	Outside	4402.00	
Change Over Sub	1.00			4403.00	
Blank Spacing	31.00			4434.00	
Change Over Sub	1.00			4435.00	
Perforations	20.00			4455.00	
Bullnose	5.00			4460.00	61.00 Anchor Tool

Total Tool Length: 80.00



**TRILOBITE
TESTING, INC**

DRILL STEM TEST REPORT

FLUID SUMMARY

Landmark Resources, Inc

1-17s-34w Scott,KS

1616 S Voss Rd. STE 600
Houston TX 77057

Janzen Unit #1

Job Ticket: 57657

DST#: 1

ATTN: Terry McLeod

Test Start: 2014.05.26 @ 16:13:15

Mud and Cushion Information

Mud Type: Gel Chem

Cushion Type:

Oil API:

33 deg API

Mud Weight: 10.00 lb/gal

Cushion Length:

ft

Water Salinity:

0 ppm

Viscosity: 56.00 sec/qt

Cushion Volume:

bbbl

Water Loss: 7.94 in³

Gas Cushion Type:

Resistivity: 0.00 ohm.m

Gas Cushion Pressure:

psig

Salinity: 5000.00 ppm

Filter Cake: 1.00 inches

Recovery Information

Recovery Table

Length ft	Description	Volume bbbl
60.00	ocm 2%o 98%m	0.295
2.00	free oil 100%o	0.010

Total Length: 62.00 ft Total Volume: 0.305 bbl

Num Fluid Samples: 0

Num Gas Bombs: 0

Serial #:

Laboratory Name:

Laboratory Location:

Recovery Comments: API 34 @ 70 corrected to 33 @ 60

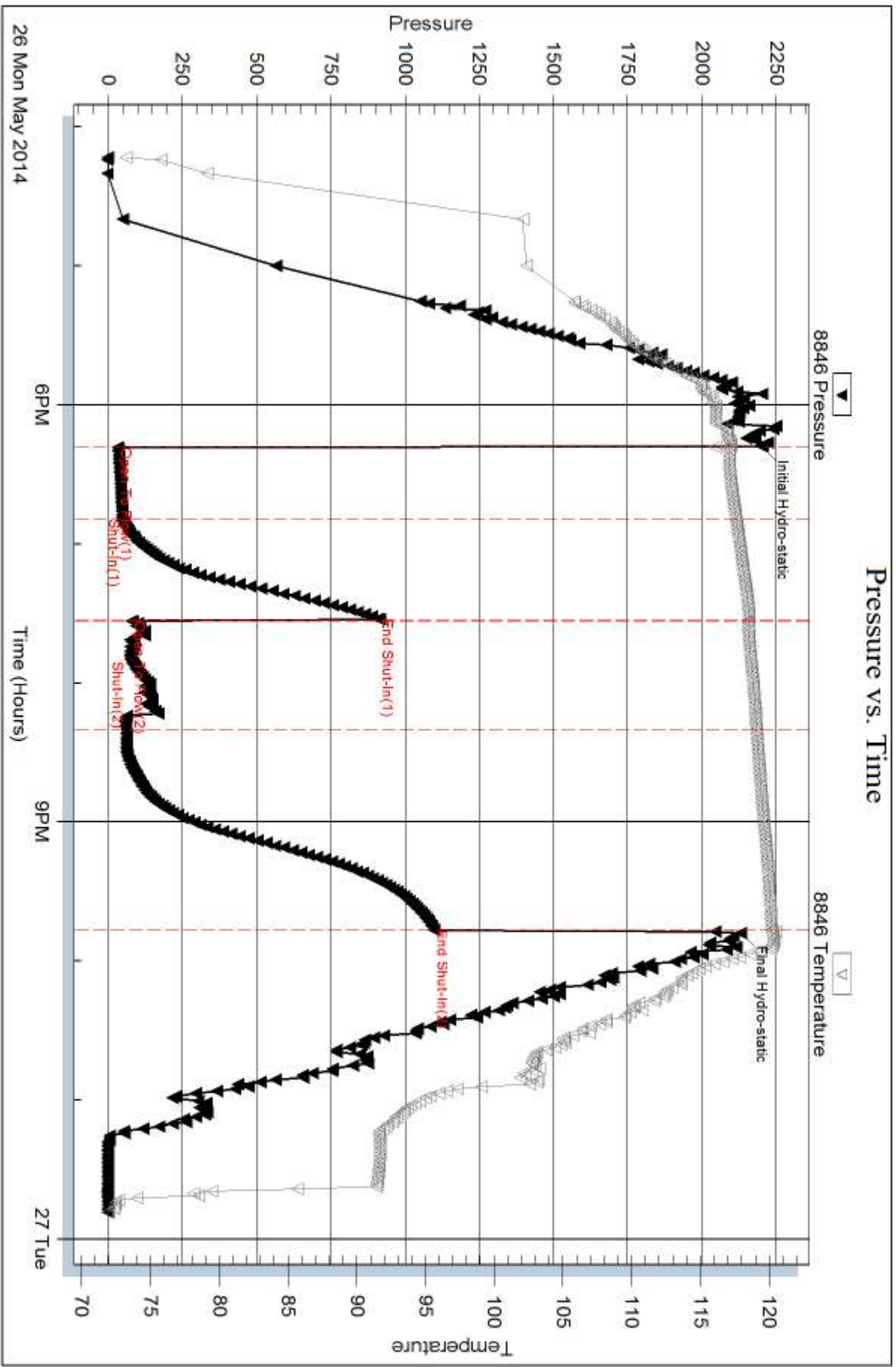
Serial #: 8846

Inside

Landmark Resources, Inc

Janzen Unit #1

DST Test Number: 1



Triobite Testing, Inc

Ref. No: 57657

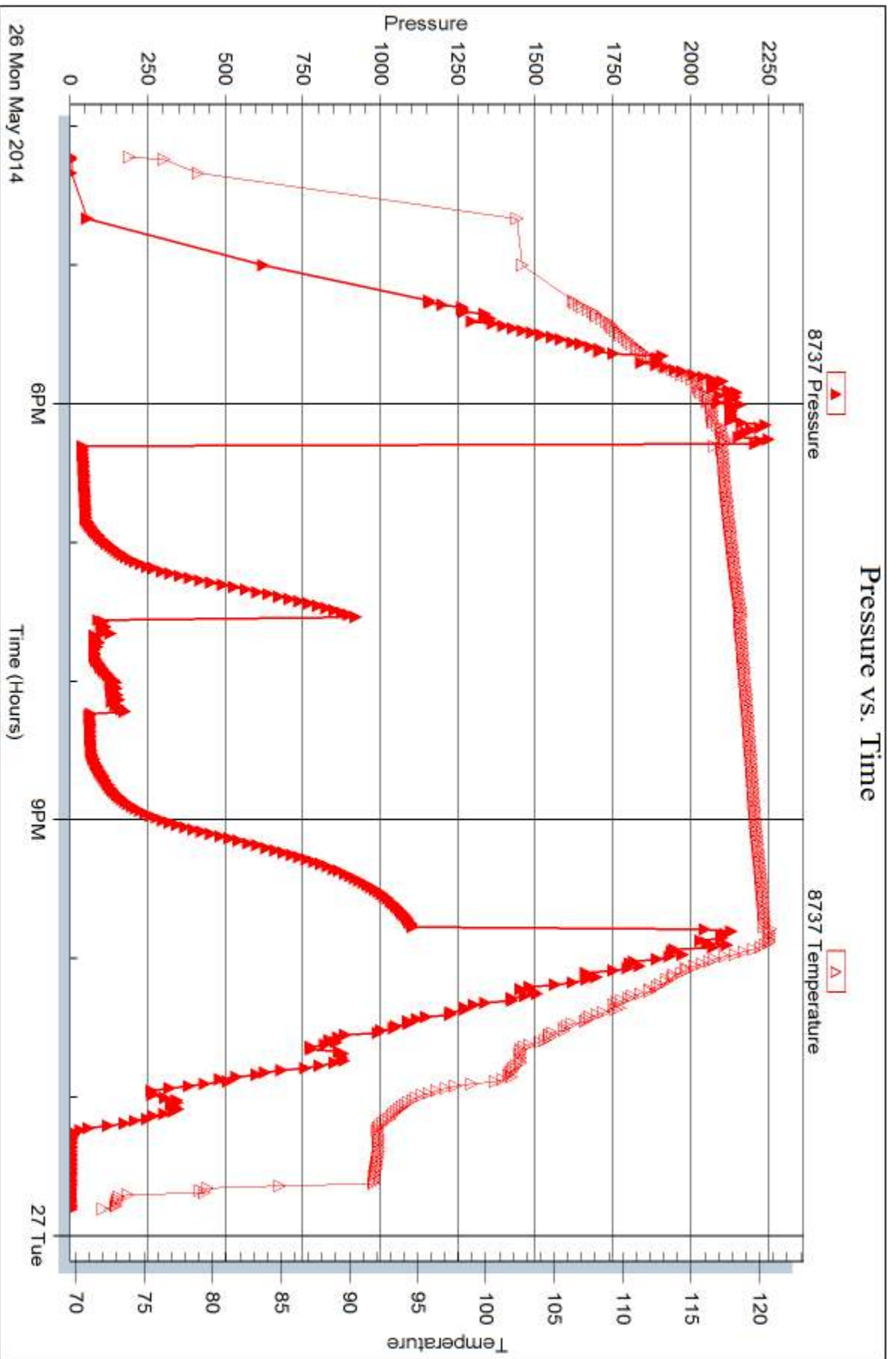
Printed: 2014.05.30 @ 12:02:57

Serial #: 8737

Outside Landmark Resources, Inc

Janzen Unit #1

DST Test Number: 1



Trilobite Testing, Inc

Ref. No: 57657

Printed: 2014.05.30 @ 12:02:57



DRILL STEM TEST REPORT

Prepared For: **Landmark Resources, Inc**

1616 S Voss Rd. STE 600
Houston TX 77057

ATTN: Terry McLeod

Janzen Unit #1

1-17s-34w Scott,KS

Start Date: 2014.05.27 @ 09:00:15

End Date: 2014.05.27 @ 16:02:45

Job Ticket #: 57658 DST #: 2

Trilobite Testing, Inc
PO Box 362 Hays, KS 67601
ph: 785-625-4778 fax: 785-625-5620

Printed: 2014.05.30 @ 12:02:32



TRILOBITE TESTING, INC.

DRILL STEM TEST REPORT

Landmark Resources, Inc
 1616 S Voss Rd. STE 600
 Houston TX 77057
 ATTN: Terry McLeod

1-17s-34w Scott,KS
Janzen Unit #1
 Job Ticket: 57658 **DST#: 2**
 Test Start: 2014.05.27 @ 09:00:15

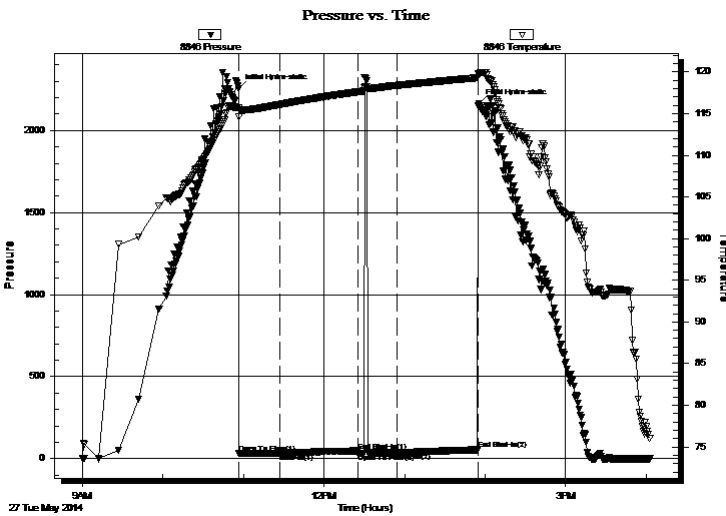
GENERAL INFORMATION:

Formation: **Altamont**
 Deviated: No Whipstock: ft (KB)
 Test Type: Conventional Bottom Hole (Reset)
 Time Tool Opened: 10:56:45 Tester: Mike Roberts
 Time Test Ended: 16:02:45 Unit No: 65
 Interval: **4455.00 ft (KB) To 4515.00 ft (KB) (TVD)** Reference Elevations: 3102.00 ft (KB)
 Total Depth: 4515.00 ft (KB) (TVD) 3091.00 ft (CF)
 Hole Diameter: 7.88 inches Hole Condition: Fair KB to GR/CF: 11.00 ft

Serial #: 8846 Inside
 Press@RunDepth: 36.24 psig @ 4457.00 ft (KB) Capacity: 8000.00 psig
 Start Date: 2014.05.27 End Date: 2014.05.27 Last Calib.: 2014.05.27
 Start Time: 09:00:15 End Time: 16:02:45 Time On Btm: 2014.05.27 @ 10:56:30
 Time Off Btm: 2014.05.27 @ 13:55:15

TEST COMMENT: IF: Built to weak surface blow and died in 5 minutes
 IS: No return blow
 FF: No blow ----- flushed tool ----- no blow
 FS: No return blow

PRESSURE SUMMARY



Time (Min.)	Pressure (psig)	Temp (deg F)	Annotation
0	2255.13	115.67	Initial Hydro-static
1	30.94	114.65	Open To Flow (1)
31	31.70	116.09	Shut-In(1)
89	47.38	117.61	End Shut-In(1)
89	32.16	117.61	Open To Flow (2)
118	36.24	118.39	Shut-In(2)
178	54.46	119.31	End Shut-In(2)
179	2161.76	119.70	Final Hydro-static

Recovery

Length (ft)	Description	Volume (bbl)
5.00	mud 100% m	0.02

* Recovery from multiple tests

Gas Rates

Choke (inches)	Pressure (psig)	Gas Rate (MMcf/d)



**TRILOBITE
TESTING, INC**

DRILL STEM TEST REPORT

TOOL DIAGRAM

Landmark Resources, Inc

1-17s-34w Scott,KS

1616 S Voss Rd. STE 600
Houston TX 77057

Janzen Unit #1

Job Ticket: 57658

DST#: 2

ATTN: Terry McLeod

Test Start: 2014.05.27 @ 09:00:15

Tool Information

Drill Pipe:	Length: 4213.00 ft	Diameter: 3.80 inches	Volume: 59.10 bbl	Tool Weight: 1500.00 lb
Heavy Wt. Pipe:	Length: 0.00 ft	Diameter: 0.00 inches	Volume: 0.00 bbl	Weight set on Packer: 25000.00 lb
Drill Collar:	Length: 249.00 ft	Diameter: 2.25 inches	Volume: 1.22 bbl	Weight to Pull Loose: 90000.00 lb
			<u>Total Volume: 60.32 bbl</u>	Tool Chased 0.00 ft
Drill Pipe Above KB:	31.00 ft			String Weight: Initial 80000.00 lb
Depth to Top Packer:	4455.00 ft			Final 80000.00 lb
Depth to Bottom Packer:	ft			
Interval between Packers:	60.00 ft			
Tool Length:	84.00 ft			
Number of Packers:	2	Diameter: 6.75 inches		

Tool Comments:

Tool Description

Tool Description	Length (ft)	Serial No.	Position	Depth (ft)	Accum. Lengths
Change Over Sub	1.00			4432.00	
Shut In Tool	5.00			4437.00	
Hydraulic tool	5.00			4442.00	
Jars	5.00			4447.00	
Safety Joint	3.00			4450.00	
Packer	5.00			4455.00	24.00 Bottom Of Top Packer
Packer - Shale	0.00			4455.00	
Stubb	1.00			4456.00	
Perforations	1.00			4457.00	
Recorder	0.00	8846	Inside	4457.00	
Recorder	0.00	8737	Outside	4457.00	
Change Over Sub	1.00			4458.00	
Blank Spacing	31.00			4489.00	
Change Over Sub	1.00			4490.00	
Perforations	20.00			4510.00	
Bullnose	5.00			4515.00	60.00 Anchor Tool
Total Tool Length:	84.00				



**TRILOBITE
TESTING, INC**

DRILL STEM TEST REPORT

FLUID SUMMARY

Landmark Resources, Inc

1-17s-34w Scott,KS

1616 S Voss Rd. STE 600
Houston TX 77057

Janzen Unit #1

Job Ticket: 57658

DST#: 2

ATTN: Terry McLeod

Test Start: 2014.05.27 @ 09:00:15

Mud and Cushion Information

Mud Type: Gel Chem

Cushion Type:

Oil API:

0 deg API

Mud Weight: 10.00 lb/gal

Cushion Length:

ft

Water Salinity:

0 ppm

Viscosity: 56.00 sec/qt

Cushion Volume:

bbbl

Water Loss: 7.96 in³

Gas Cushion Type:

Resistivity: 0.00 ohm.m

Gas Cushion Pressure:

psig

Salinity: 5000.00 ppm

Filter Cake: 1.00 inches

Recovery Information

Recovery Table

Length ft	Description	Volume bbl
5.00	mud 100% m	0.025

Total Length: 5.00 ft Total Volume: 0.025 bbl

Num Fluid Samples: 0

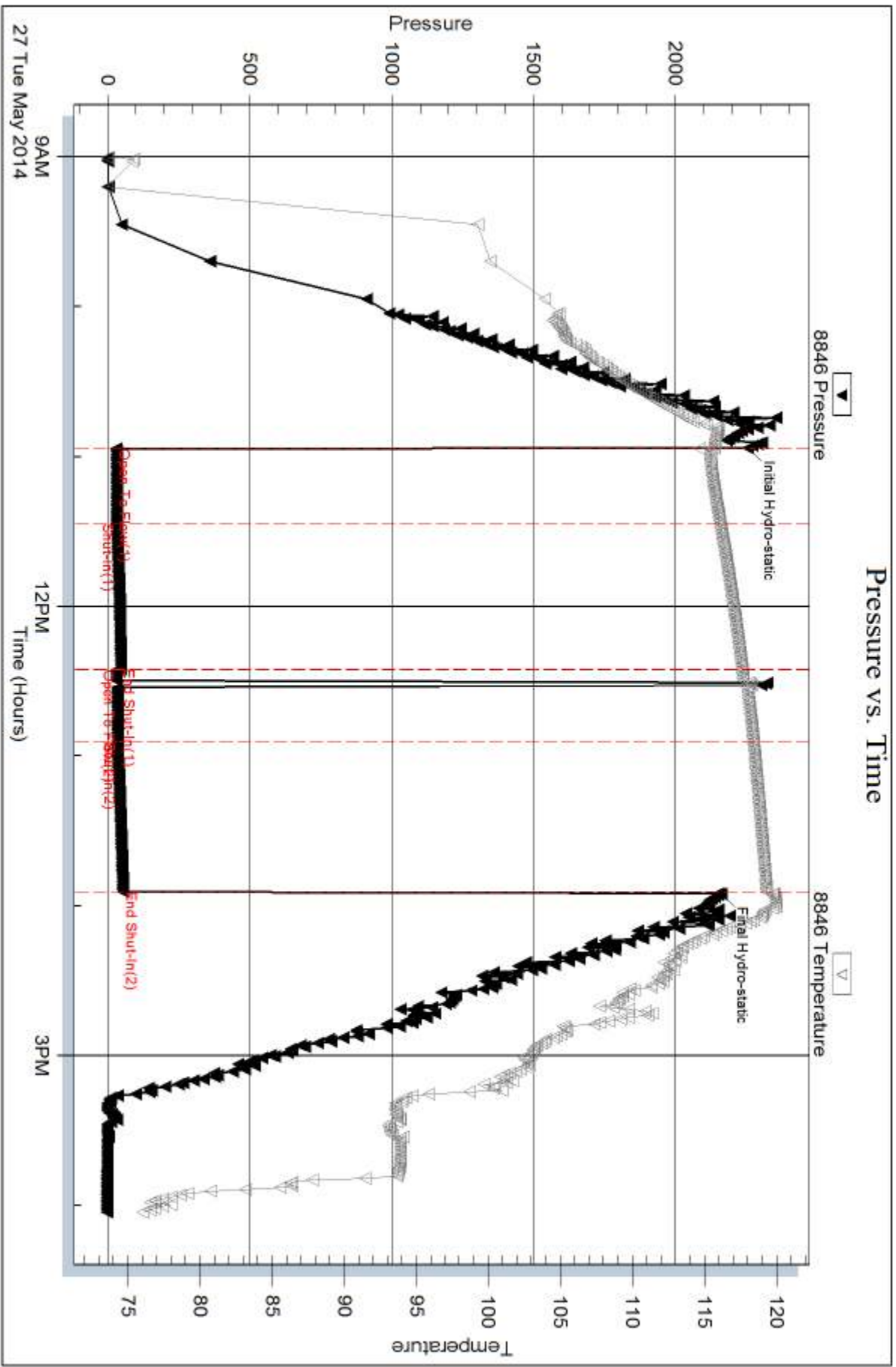
Num Gas Bombs: 0

Serial #:

Laboratory Name:

Laboratory Location:

Recovery Comments:

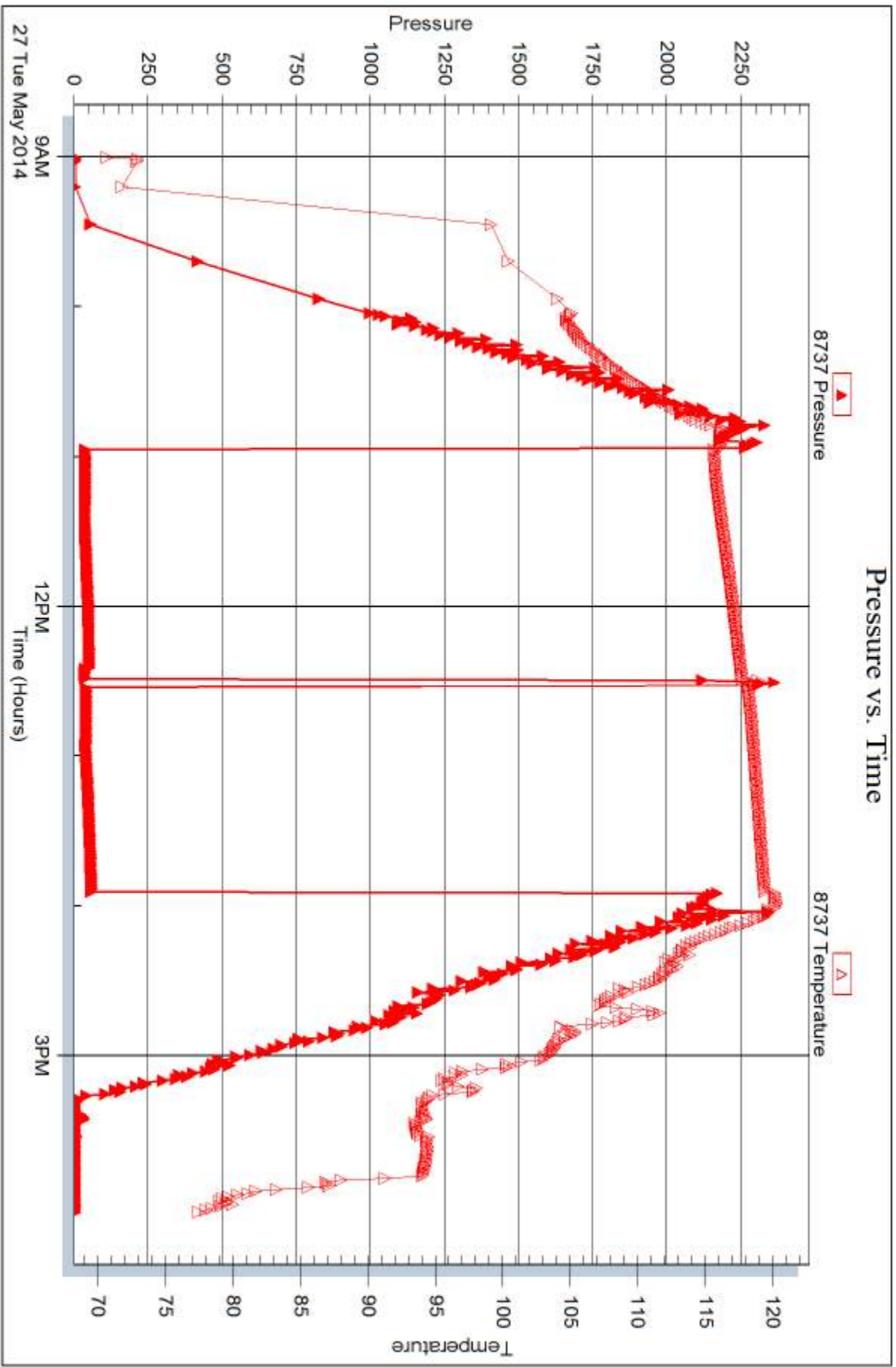


Serial #: 8737

Outside Landmark Resources, Inc

Janzen Unit #1

DST Test Number: 2



Trilobite Testing, Inc

Ref. No: 57658

Printed: 2014.05.30 @ 12:02:33



DRILL STEM TEST REPORT

Prepared For: **Landmark Resources, Inc**

1616 S Voss Rd. STE 600
Houston TX 77057

ATTN: Terry McLeod

Janzen Unit #1

1-17s-34w Scott,KS

Start Date: 2014.05.28 @ 04:20:15

End Date: 2014.05.28 @ 12:02:30

Job Ticket #: 57659 DST #: 3

Trilobite Testing, Inc
PO Box 362 Hays, KS 67601
ph: 785-625-4778 fax: 785-625-5620

Printed: 2014.05.30 @ 12:02:09



TRILOBITE TESTING, INC.

DRILL STEM TEST REPORT

Landmark Resources, Inc

1-17s-34w Scott,KS

1616 S Voss Rd. STE 600
Houston TX 77057

Janzen Unit #1

ATTN: Terry McLeod

Job Ticket: 57659

DST#: 3

Test Start: 2014.05.28 @ 04:20:15

GENERAL INFORMATION:

Formation: **Myrick- Ft.Scott**

Deviated: No Whipstock: ft (KB)

Time Tool Opened: 06:26:00

Time Test Ended: 12:02:30

Test Type: Conventional Bottom Hole (Reset)

Tester: Mike Roberts

Unit No: 65

Interval: 4543.00 ft (KB) To 4597.00 ft (KB) (TVD)

Total Depth: 4597.00 ft (KB) (TVD)

Hole Diameter: 7.88 inches Hole Condition: Fair

Reference Elevations: 3102.00 ft (KB)

3091.00 ft (CF)

KB to GR/CF: 11.00 ft

Serial #: 8846

Inside

Press@RunDepth: 87.72 psig @ 4545.00 ft (KB)

Start Date: 2014.05.28

End Date:

2014.05.28

Start Time: 04:20:15

End Time:

12:02:30

Capacity: 8000.00 psig

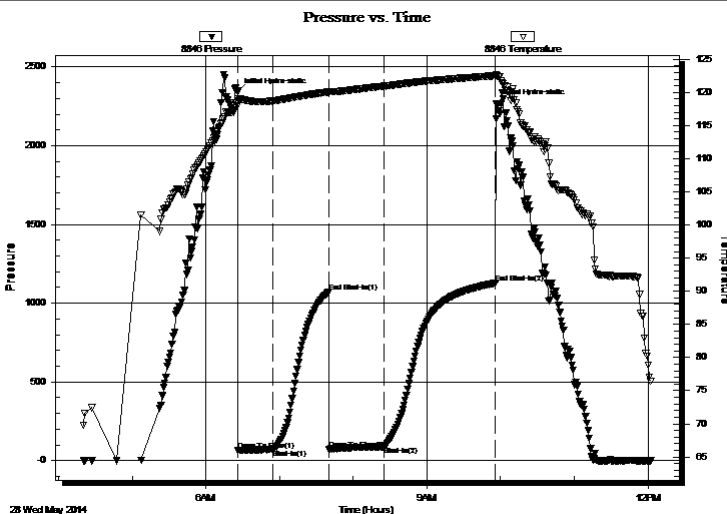
Last Calib.: 2014.05.28

Time On Btm: 2014.05.28 @ 06:25:45

Time Off Btm: 2014.05.28 @ 09:56:45

TEST COMMENT: IF: Built to 5" blow
IS: No return blow
FF: Built to 7" blow
FS: No return blow

PRESSURE SUMMARY



Time (Min.)	Pressure (psig)	Temp (deg F)	Annotation
0	2340.26	118.51	Initial Hydro-static
1	61.95	118.05	Open To Flow (1)
29	70.67	118.72	Shut-In(1)
74	1072.11	120.06	End Shut-In(1)
75	72.28	119.86	Open To Flow (2)
120	87.72	120.94	Shut-In(2)
210	1126.27	122.50	End Shut-In(2)
211	2267.85	122.50	Final Hydro-static

Recovery

Length (ft)	Description	Volume (bbl)
60.00	ocgm 10%o 40%g 50%m	0.30
60.00	ocgm 2%o 3%g 95%m	0.30
0.00	GIP= 240 ft	0.00

Gas Rates

	Choke (inches)	Pressure (psig)	Gas Rate (MMcf/d)

* Recovery from multiple tests



**TRILOBITE
TESTING, INC**

DRILL STEM TEST REPORT

TOOL DIAGRAM

Landmark Resources, Inc

1-17s-34w Scott,KS

1616 S Voss Rd. STE 600
Houston TX 77057

Janzen Unit #1

Job Ticket: 57659

DST#: 3

ATTN: Terry McLeod

Test Start: 2014.05.28 @ 04:20:15

Tool Information

Drill Pipe:	Length: 4275.00 ft	Diameter: 3.80 inches	Volume: 59.97 bbl	Tool Weight: 1500.00 lb
Heavy Wt. Pipe:	Length: 0.00 ft	Diameter: 0.00 inches	Volume: 0.00 bbl	Weight set on Packer: 25000.00 lb
Drill Collar:	Length: 249.00 ft	Diameter: 2.25 inches	Volume: 1.22 bbl	Weight to Pull Loose: 90000.00 lb
			<u>Total Volume: 61.19 bbl</u>	Tool Chased 0.00 ft
Drill Pipe Above KB:	5.00 ft			String Weight: Initial 78000.00 lb
Depth to Top Packer:	4543.00 ft			Final 82000.00 lb
Depth to Bottom Packer:	ft			
Interval between Packers:	54.00 ft			
Tool Length:	78.00 ft			
Number of Packers:	2	Diameter: 6.75 inches		

Tool Comments:

Tool Description

Tool Description	Length (ft)	Serial No.	Position	Depth (ft)	Accum. Lengths
Change Over Sub	1.00			4520.00	
Shut In Tool	5.00			4525.00	
Hydraulic tool	5.00			4530.00	
Jars	5.00			4535.00	
Safety Joint	3.00			4538.00	
Packer	5.00			4543.00	24.00 Bottom Of Top Packer
Packer - Shale	0.00			4543.00	
Stubb	1.00			4544.00	
Perforations	1.00			4545.00	
Recorder	0.00	8846	Inside	4545.00	
Recorder	0.00	8737	Outside	4545.00	
Change Over Sub	1.00			4546.00	
Blank Spacing	31.00			4577.00	
Change Over Sub	1.00			4578.00	
Perforations	14.00			4592.00	
Bullnose	5.00			4597.00	54.00 Anchor Tool
Total Tool Length:	78.00				



**TRILOBITE
TESTING, INC**

DRILL STEM TEST REPORT

FLUID SUMMARY

Landmark Resources, Inc

1-17s-34w Scott,KS

1616 S Voss Rd. STE 600
Houston TX 77057

Janzen Unit #1

Job Ticket: 57659

DST#: 3

ATTN: Terry McLeod

Test Start: 2014.05.28 @ 04:20:15

Mud and Cushion Information

Mud Type: Gel Chem

Cushion Type:

Oil API:

0 deg API

Mud Weight: 9.00 lb/gal

Cushion Length:

ft

Water Salinity:

0 ppm

Viscosity: 58.00 sec/qt

Cushion Volume:

bbbl

Water Loss: 7.17 in³

Gas Cushion Type:

Resistivity: 0.00 ohm.m

Gas Cushion Pressure:

psig

Salinity: 4000.00 ppm

Filter Cake: 1.00 inches

Recovery Information

Recovery Table

Length ft	Description	Volume bbl
60.00	ocgm 10%o 40%g 50%m	0.295
60.00	ocgm 2%o 3%g 95%m	0.295
0.00	GIP= 240 ft	0.000

Total Length: 120.00 ft

Total Volume: 0.590 bbl

Num Fluid Samples: 0

Num Gas Bombs: 0

Serial #:

Laboratory Name:

Laboratory Location:

Recovery Comments:

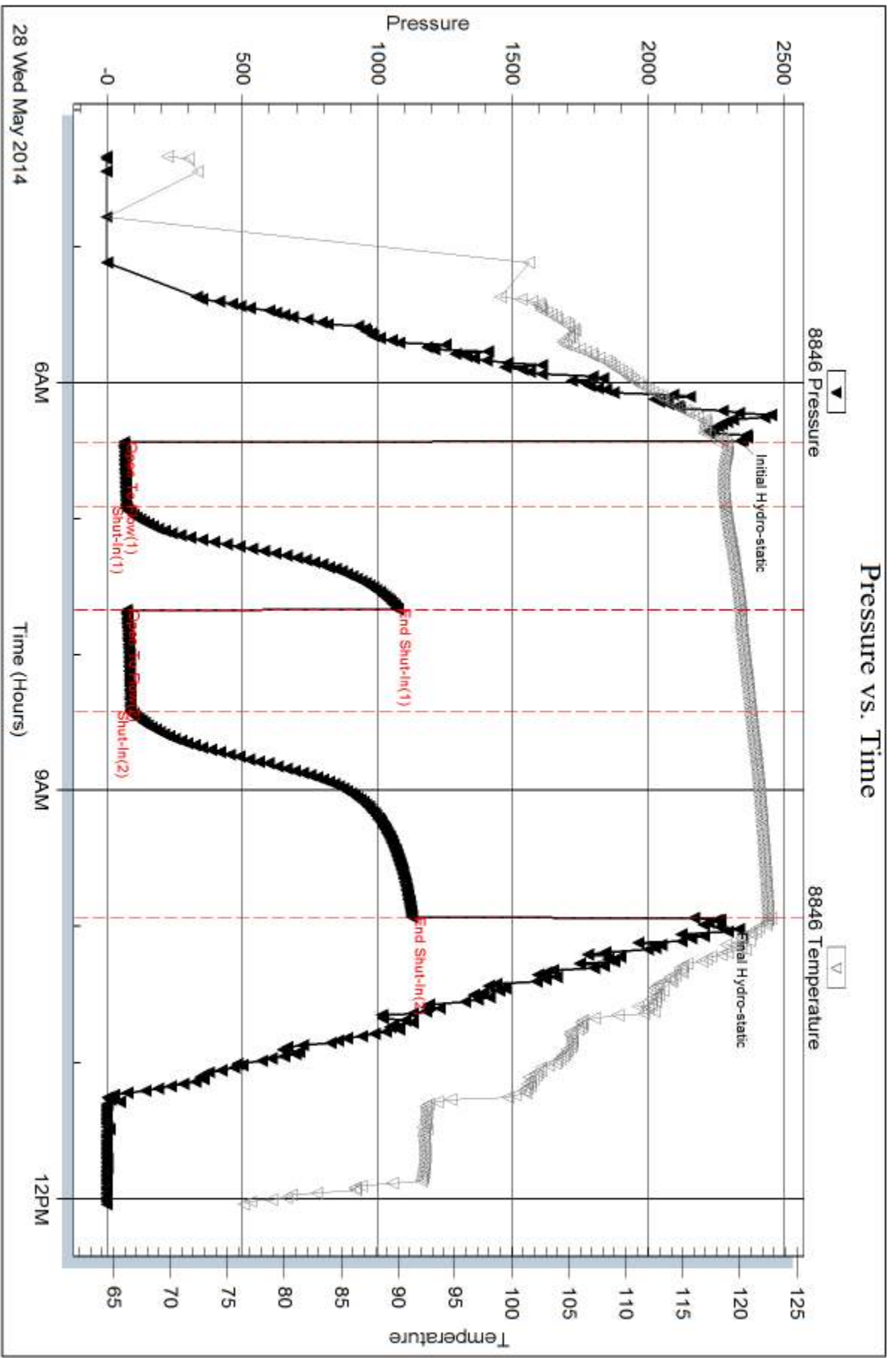
Serial #: 8846

Inside

Landmark Resources, Inc

Janzen Unit #1

DST Test Number: 3



Trilobite Testing, Inc

Ref. No: 57659

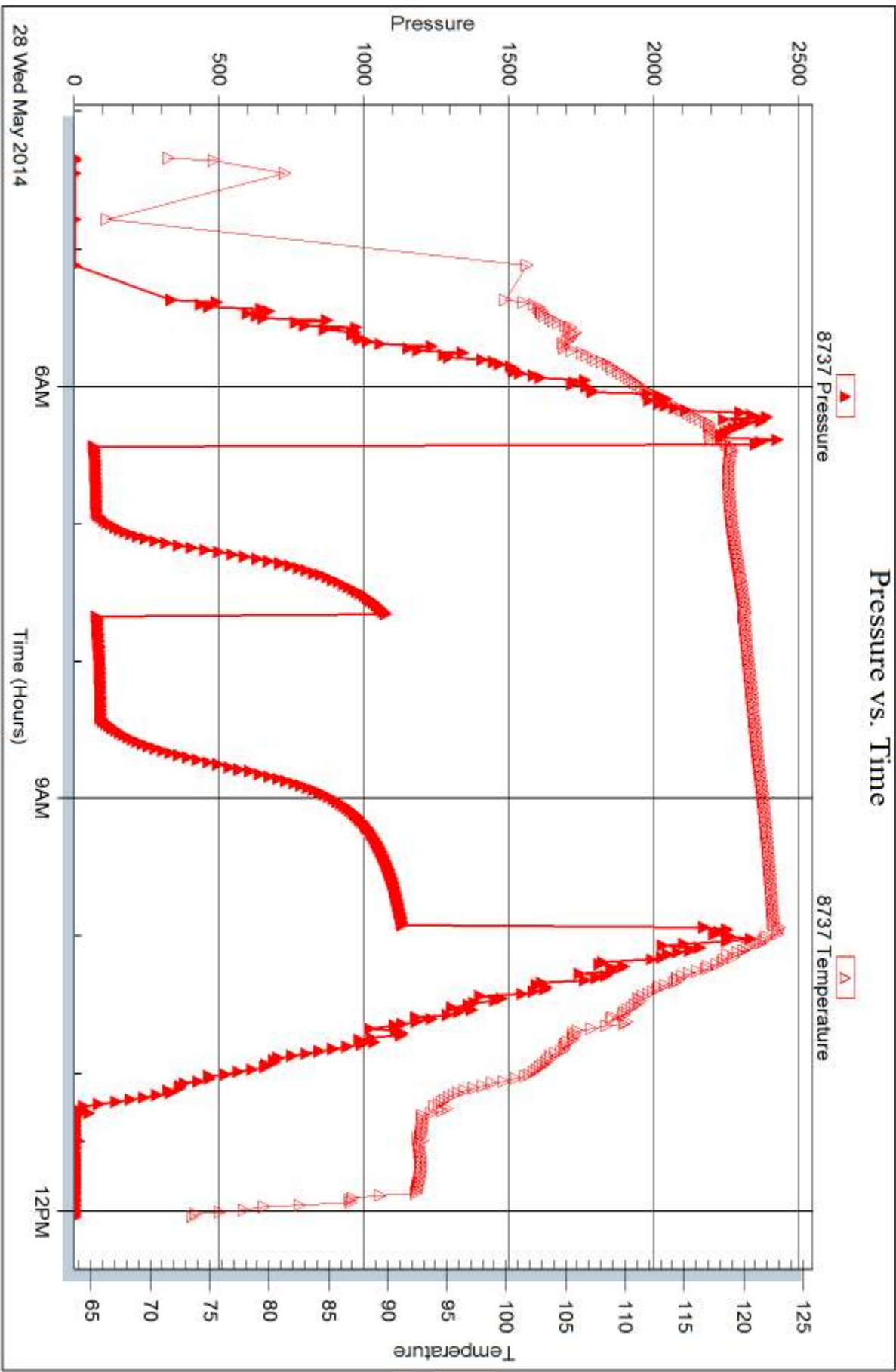
Printed: 2014.05.30 @ 12:02:10

Serial #: 8737

Outside Landmark Resources, Inc

Janzen Unit #1

DST Test Number: 3





DRILL STEM TEST REPORT

Prepared For: **Landmark Resources, Inc**

1616 S Voss Rd. STE 600
Houston TX 77057

ATTN: Terry McLeod

Janzen Unit #1

1-17s-34w Scott,KS

Start Date: 2014.05.29 @ 02:27:15

End Date: 2014.05.29 @ 10:40:00

Job Ticket #: 57660 DST #: 4

Trilobite Testing, Inc
PO Box 362 Hays, KS 67601
ph: 785-625-4778 fax: 785-625-5620

Printed: 2014.05.30 @ 12:01:28

Landmark Resources, Inc
1-17s-34w Scott,KS
Janzen Unit #1
DST # 4
Johnson
2014.05.29



TRILOBITE TESTING, INC

DRILL STEM TEST REPORT

Landmark Resources, Inc
 1616 S Voss Rd. STE 600
 Houston TX 77057
 ATTN: Terry McLeod

1-17s-34w Scott,KS

Janzen Unit #1

Job Ticket: 57660

DST#: 4

Test Start: 2014.05.29 @ 02:27:15

GENERAL INFORMATION:

Formation: **Johnson**
 Deviated: No Whipstock: ft (KB)
 Time Tool Opened: 04:41:15
 Time Test Ended: 10:40:00
 Interval: **4646.00 ft (KB) To 4715.00 ft (KB) (TVD)**
 Total Depth: 4715.00 ft (KB) (TVD)
 Hole Diameter: 7.88 inches Hole Condition: Fair
 Test Type: Conventional Bottom Hole (Reset)
 Tester: Mike Roberts
 Unit No: 65
 Reference Elevations: 3102.00 ft (KB)
 3091.00 ft (CF)
 KB to GR/CF: 11.00 ft

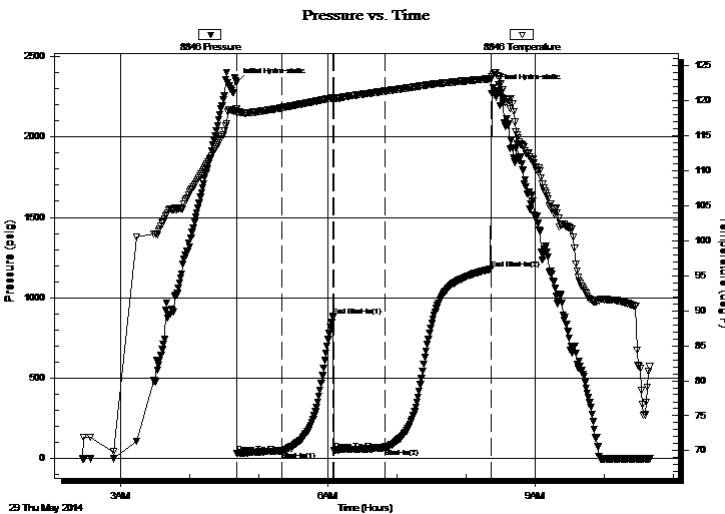
Serial #: 8846

Inside

Press@RunDepth: 64.16 psig @ 4648.00 ft (KB) Capacity: 8000.00 psig
 Start Date: 2014.05.29 End Date: 2014.05.29 Last Calib.: 2014.05.29
 Start Time: 02:27:15 End Time: 10:40:00 Time On Btm: 2014.05.29 @ 04:41:00
 Time Off Btm: 2014.05.29 @ 08:23:15

TEST COMMENT: IF: Built to 2" blow
 IS: No blow
 FF: Built to 5" blow
 FS: No return blow

PRESSURE SUMMARY



Time (Min.)	Pressure (psig)	Temp (deg F)	Annotation
0	2339.83	118.79	Initial Hydro-static
1	32.92	118.24	Open To Flow (1)
39	47.62	118.98	Shut-In(1)
84	884.64	120.42	End Shut-In(1)
85	49.20	120.36	Open To Flow (2)
129	64.16	121.36	Shut-In(2)
221	1178.58	123.14	End Shut-In(2)
223	2303.36	123.78	Final Hydro-static

Recovery

Length (ft)	Description	Volume (bbl)
60.00	ocgm 30%o 30%g 40%m	0.30
30.00	ocm 30%o 70%m	0.15
0.00	GIP= 216 ft	0.00

* Recovery from multiple tests

Gas Rates

	Choke (inches)	Pressure (psig)	Gas Rate (MMcf/d)



**TRILOBITE
TESTING, INC**

DRILL STEM TEST REPORT

TOOL DIAGRAM

Landmark Resources, Inc

1-17s-34w Scott,KS

1616 S Voss Rd. STE 600
Houston TX 77057

Janzen Unit #1

Job Ticket: 57660

DST#: 4

ATTN: Terry McLeod

Test Start: 2014.05.29 @ 02:27:15

Tool Information

Drill Pipe:	Length: 4405.00 ft	Diameter: 3.80 inches	Volume: 61.79 bbl	Tool Weight: 1500.00 lb
Heavy Wt. Pipe:	Length: 0.00 ft	Diameter: 0.00 inches	Volume: 0.00 bbl	Weight set on Packer: 25000.00 lb
Drill Collar:	Length: 249.00 ft	Diameter: 2.25 inches	Volume: 1.22 bbl	Weight to Pull Loose: 90000.00 lb
			<u>Total Volume: 63.01 bbl</u>	Tool Chased 0.00 ft
Drill Pipe Above KB:	32.00 ft			String Weight: Initial 80000.00 lb
Depth to Top Packer:	4646.00 ft			Final 82000.00 lb
Depth to Bottom Packer:	ft			
Interval between Packers:	69.00 ft			
Tool Length:	93.00 ft			
Number of Packers:	2	Diameter: 6.75 inches		

Tool Comments:

Tool Description

Tool Description	Length (ft)	Serial No.	Position	Depth (ft)	Accum. Lengths
Change Over Sub	1.00			4623.00	
Shut In Tool	5.00			4628.00	
Hydraulic tool	5.00			4633.00	
Jars	5.00			4638.00	
Safety Joint	3.00			4641.00	
Packer	5.00			4646.00	24.00 Bottom Of Top Packer
Packer - Shale	0.00			4646.00	
Stubb	1.00			4647.00	
Perforations	1.00			4648.00	
Recorder	0.00	8846	Inside	4648.00	
Recorder	0.00	8737	Outside	4648.00	
Change Over Sub	1.00			4649.00	
Blank Spacing	32.00			4681.00	
Change Over Sub	1.00			4682.00	
Perforations	28.00			4710.00	
Bullnose	5.00			4715.00	69.00 Anchor Tool
Total Tool Length:	93.00				



**TRILOBITE
TESTING, INC**

DRILL STEM TEST REPORT

FLUID SUMMARY

Landmark Resources, Inc

1-17s-34w Scott,KS

1616 S Voss Rd. STE 600
Houston TX 77057

Janzen Unit #1

Job Ticket: 57660

DST#: 4

ATTN: Terry McLeod

Test Start: 2014.05.29 @ 02:27:15

Mud and Cushion Information

Mud Type: Gel Chem

Cushion Type:

Oil API:

0 deg API

Mud Weight: 10.00 lb/gal

Cushion Length:

ft

Water Salinity:

0 ppm

Viscosity: 58.00 sec/qt

Cushion Volume:

bbbl

Water Loss: 9.58 in³

Gas Cushion Type:

Resistivity: 0.00 ohm.m

Gas Cushion Pressure:

psig

Salinity: 6000.00 ppm

Filter Cake: 1.00 inches

Recovery Information

Recovery Table

Length ft	Description	Volume bbbl
60.00	ocgm 30%o 30%g 40%m	0.295
30.00	ocm 30%o 70%m	0.148
0.00	GIP= 216 ft	0.000

Total Length: 90.00 ft Total Volume: 0.443 bbl

Num Fluid Samples: 0

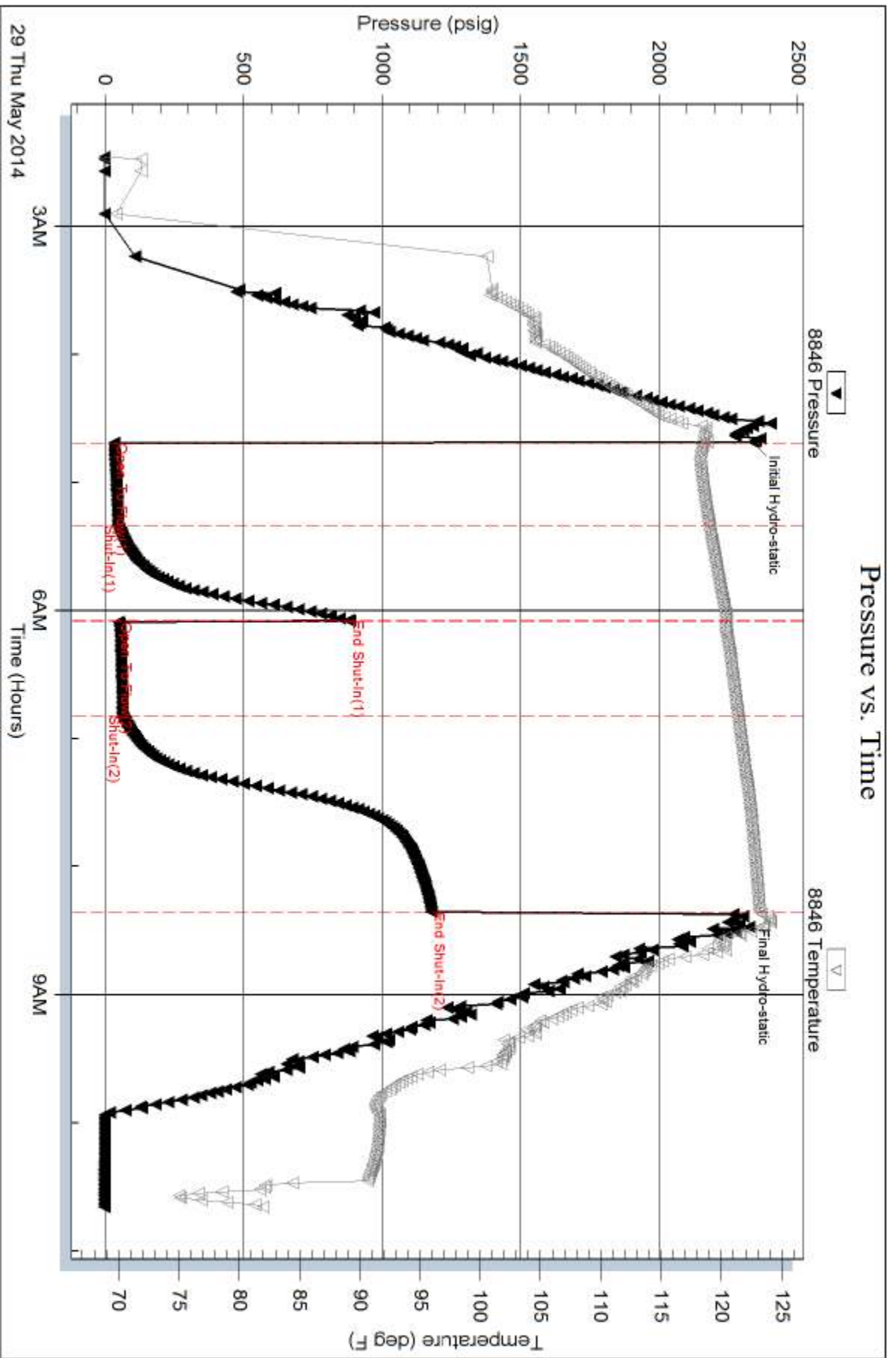
Num Gas Bombs: 0

Serial #:

Laboratory Name:

Laboratory Location:

Recovery Comments:

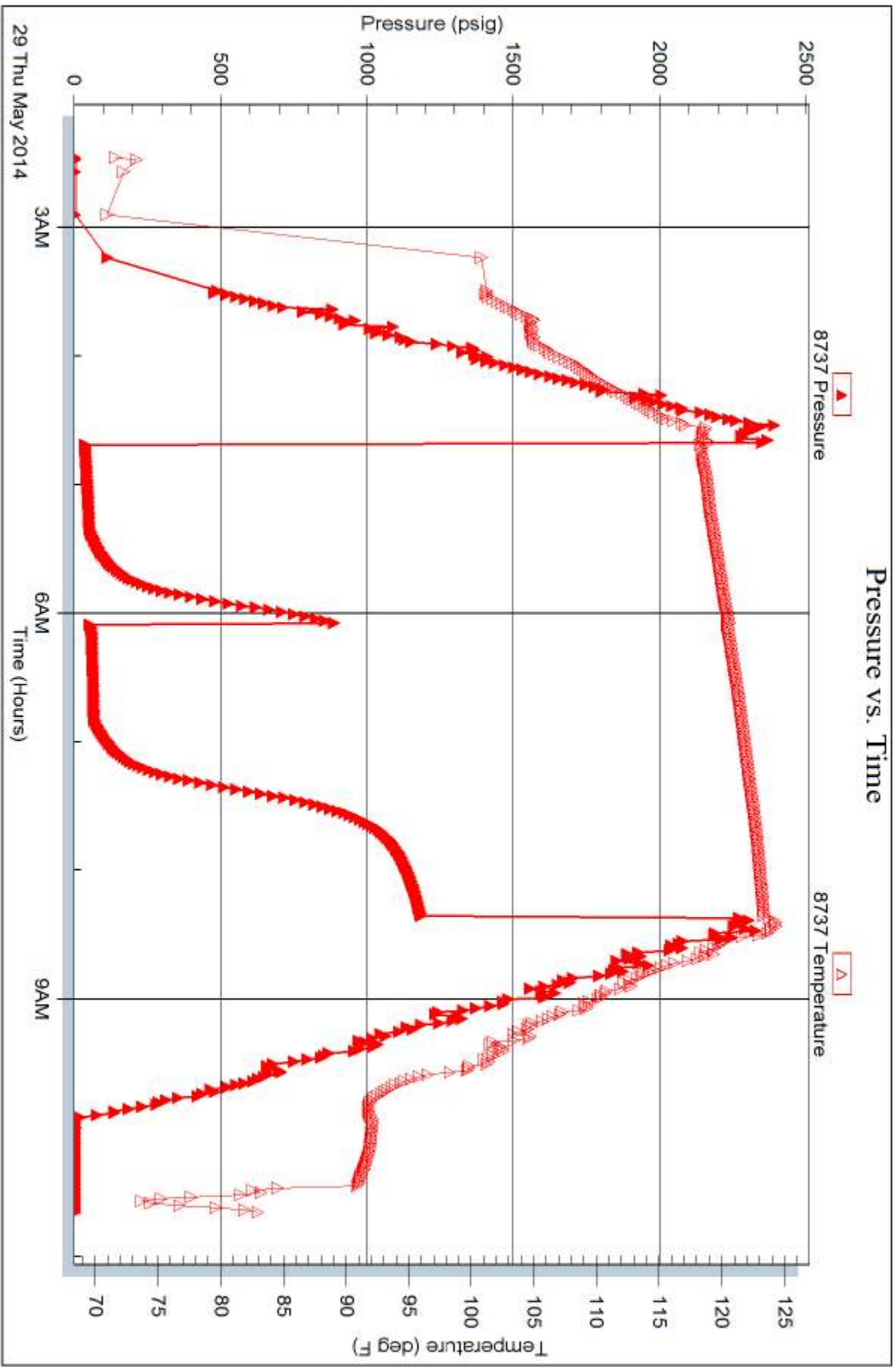


Serial #: 8737

Outside Landmark Resources, Inc

Janzen Unit #1

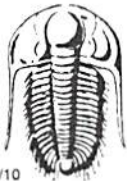
DST Test Number: 4



Trilobite Testing, Inc

Ref. No: 57660

Printed: 2014.05.30 @ 12:01:30



TRILOBITE TESTING INC.

1515 Commerce Parkway • Hays, Kansas 67601

Test Ticket

NO. 57657

4/10

Well Name & No. Janzen Unit 1 Test No. 1 Date 5-26-14
 Company Landmark Resources Inc Elevation ~~3102~~ 3091 KB 3091 GL
 Address 1616 S Voss Rd. STE 600 Houston TX 77057
 Co. Rep / Geo. Terry McLeod Rig Martin 22
 Location: Sec. 1 Twp. 17 Rge. 34 Co. Scott State KS

Interval Tested 4399-4460 Zone Tested Marmaton
 Anchor Length 61' Drill Pipe Run 4156 Mud Wt. 9.5
 Top Packer Depth 4394 Drill Collars Run ~~236~~ 236 Vis 56
 Bottom Packer Depth 4399 Wt. Pipe Run 6 WL 8.0
 Total Depth 4460 Chlorides 5000 ppm System LCM 3
 Blow Description IF: Built to 1" Blow
IS: No Return Blow
FF: No Blow
FS: No Return Blow

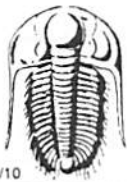
Rec	Feet of	%gas	%oil	%water	%mud
<u>60</u>	<u>Feet of OCM</u>	<u>2</u>	<u>90</u>	<u>90</u>	<u>90</u>
<u>2</u>	<u>Feet of Free Oil</u>	<u>100</u>			

Rec Total 602 BHT 120 Gravity — API RW — @ — °F Chlorides — ppm

(A) Initial Hydrostatic <u>2201</u>	<input checked="" type="checkbox"/> Test <u>1250</u>	T-On Location <u>13:30</u>
(B) First Initial Flow <u>34</u>	<input checked="" type="checkbox"/> Jars <u>NC</u>	T-Started <u>16:13</u>
(C) First Final Flow <u>48</u>	<input checked="" type="checkbox"/> Safety Joint <u>75</u>	T-Open <u>18:18</u>
(D) Initial Shut-In <u>914</u>	<input checked="" type="checkbox"/> Circ Sub <u>NC</u>	T-Pulled <u>21:48</u>
(E) Second Initial Flow <u>78</u>	<input type="checkbox"/> Hourly Standby	T-Out <u>23:48</u>
(F) Second Final Flow <u>61</u>	<input checked="" type="checkbox"/> Mileage <u>32 RT</u> <u>49.60</u>	Comments
(G) Final Shut-In <u>1097</u>	<input type="checkbox"/> Sampler	
(H) Final Hydrostatic <u>2131</u>	<input type="checkbox"/> Straddle	
	<input checked="" type="checkbox"/> Shale Packer <u>250</u>	<input type="checkbox"/> Ruined Shale Packer
	<input type="checkbox"/> Extra Packer	<input type="checkbox"/> Ruined Packer
Initial Open <u>30</u>	<input type="checkbox"/> Extra Recorder	Sub Total <u>0</u>
Initial Shut-In <u>45</u>	<input type="checkbox"/> Day Standby	Total <u>1624.60</u>
Final Flow <u>95</u>	<input type="checkbox"/> Accessibility	MP/DST Disc't
Final Shut-In <u>90</u>	Sub Total <u>1624.60</u>	

Approved By Terry J. McLeod Our Representative Mike Roberts

Trilobite Testing Inc. shall not be liable for damaged of any kind of the property or personnel of the one for whom a test is made, or for any loss suffered or sustained, directly or indirectly, through the use of its equipment, or its statements or opinion concerning the results of any test, tools lost or damaged in the hole shall be paid for at cost by the party for whom the test is made.



TRILOBITE TESTING INC.

1515 Commerce Parkway • Hays, Kansas 67601

Test Ticket

NO. 57658

Well Name & No. Janzen Unit 1 Test No. 2 Date 5-27-14
 Company Landmark Resources Inc Elevation 3102 KB 3091 GL
 Address 1616 S Voss Rd STE 600 Houston TX 77057
 Co. Rep / Geo. Terry McLeod Rig Martin 22
 Location: Sec. 1 Twp. 17 Rge. 34 Co. ~~Adair~~ Scott State KS

Interval Tested 4455-4515 Zone Tested Altament
 Anchor Length 60 Drill Pipe Run 4213 Mud Wt. 9.5
 Top Packer Depth 4450 Drill Collars Run 236 Vis 54
 Bottom Packer Depth 4455 Wt. Pipe Run ∅ WL 8.0
 Total Depth 4515 Chlorides 5000 ppm System LCM 3

Blow Description IF: Built to Weak Surface Blow + Dried in 5 min
IS: No Return Blow
FF: NO Blow - Flushed Tool - No Blow
FS: No Return Blow

Rec	Feet of	%gas	%oil	%water	%mud
<u>5</u>	<u>MUD</u>			<u>100</u>	
Rec	Feet of	%gas	%oil	%water	%mud
Rec	Feet of	%gas	%oil	%water	%mud
Rec	Feet of	%gas	%oil	%water	%mud

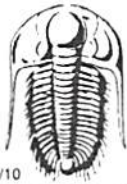
Rec Total 5 BHT _____ Gravity _____ API RW _____ @ _____ °F Chlorides _____ ppm

(A) Initial Hydrostatic <u>2255</u>	<input checked="" type="checkbox"/> Test <u>1250</u>	T-On Location <u>08:30</u>
(B) First Initial Flow <u>30</u>	<input type="checkbox"/> Jars	T-Started <u>09:00</u>
(C) First Final Flow <u>31</u>	<input checked="" type="checkbox"/> Safety Joint <u>75</u>	T-Open <u>10:58</u>
(D) Initial Shut-In <u>47</u>	<input checked="" type="checkbox"/> Circ Sub <u>NC</u>	T-Pulled <u>13:57</u>
(E) Second Initial Flow <u>32</u>	<input type="checkbox"/> Hourly Standby	T-Out <u>16:02</u>
(F) Second Final Flow <u>36</u>	<input checked="" type="checkbox"/> Mileage <u>RT 32</u> 49.60	Comments <u>Big Broke Down</u>
(G) Final Shut-In <u>54</u>	<input type="checkbox"/> Sampler	<u>While Turning Table on</u>
(H) Final Hydrostatic <u>2161</u>	<input type="checkbox"/> Straddle	<u>2nd Open - Different Times</u>

Initial Open <u>30</u>	<input type="checkbox"/> Shale Packer <u>250</u>	<input type="checkbox"/> Ruined Shale Packer
Initial Shut-In <u>45</u>	<input type="checkbox"/> Extra Packer	<input type="checkbox"/> Ruined Packer
Final Flow <u>45</u>	<input type="checkbox"/> Extra Recorder	Sub Total <u>0</u>
Final Shut-In <u>60</u>	<input type="checkbox"/> Day Standby	Total <u>1624.60</u>
	<input type="checkbox"/> Accessibility	MP/DST Disc't _____
	Sub Total <u>1624.60</u>	

Approved By Terry McLeod Our Representative Mike Roberts

Trilobite Testing Inc. shall not be liable for damaged of any kind of the property or personnel of the one for whom a test is made, or for any loss suffered or sustained, directly or indirectly, through the use of its equipment, or its statements or opinion concerning the results of any test, tools lost or damaged in the hole shall be paid for at cost by the party for whom the test is made.



TRILOBITE TESTING INC.

1515 Commerce Parkway • Hays, Kansas 67601

Test Ticket

NO. 57659

Well Name & No. Janzen Unit 1 Test No. 3 Date 5-28-14
 Company Landmark Resources Inc Elevation 3102 KB 3091 GL
 Address 1616 S. Voss Rd STE 600 Houston TX 77057
 Co. Rep / Geo. Terry McLeod Rig Murkin 22
 Location: Sec. 1 Twp. 17 Rge. 34 Co. SCOTT State KS

Interval Tested 4543-4597 Zone Tested Mgrick - Ft Scott
 Anchor Length 54 Drill Pipe Run 4275 Mud Wt. 9.3
 Top Packer Depth 4539 Drill Collars Run 236 Vis 58
 Bottom Packer Depth 4543 Wt. Pipe Run Ø WL 7.2
 Total Depth 4597 Chlorides 4000 ppm System LCM 2

Blow Description IF: Built to 5" Blow
IS: No Return Blow
FF: Built to 7" Blow
FS: No Return Blow

Rec	Feet of	%gas	%oil	%water	%mud
<u>Ø</u>	<u>240' GIP</u>	<u>100</u>			
<u>60</u>	<u>OCGM</u>	<u>3</u>	<u>2</u>		<u>95</u>
<u>60</u>	<u>OCGM</u>	<u>40</u>	<u>10</u>		<u>50</u>

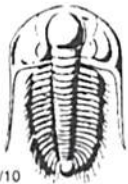
Rec Total 120 BHT _____ Gravity _____ API RW _____ @ _____ °F Chlorides _____ ppm

(A) Initial Hydrostatic 2340 Test 1250 T-On Location 03:00
 (B) First Initial Flow 61 Jars _____ T-Started 04:20
 (C) First Final Flow 70 Safety Joint 75 T-Open 06:25
 (D) Initial Shut-In 1072 Circ Sub _____ T-Pulled 09:55
 (E) Second Initial Flow 72 Hourly Standby _____ T-Out 12:02
 (F) Second Final Flow 87 Mileage RT 32 49.60 Comments _____
 (G) Final Shut-In 1126 Sampler _____
 (H) Final Hydrostatic 2267 Straddle _____ Ruined Shale Packer _____

Initial Open 30 Extra Packer _____ Extra Copies _____
 Initial Shut-In 45 Extra Recorder _____ Sub Total 0
 Final Flow 45 Day Standby _____ Total 1624.60
 Final Shut-In 90 Accessibility _____ MP/DST Disc't _____
 Sub Total 1624.60

Approved By Jay L. Miled Our Representative Mike Roberts

Trilobite Testing Inc. shall not be liable for damaged of any kind of the property or personnel of the one for whom a test is made, or for any loss suffered or sustained, directly or indirectly, through the use of its equipment, or its statements or opinion concerning the results of any test, tools lost or damaged in the hole shall be paid for at cost by the party for whom the test is made.



TRILOBITE TESTING INC.

1515 Commerce Parkway • Hays, Kansas 67601

312

Test Ticket

NO. 57660

Well Name & No. Janzen Unit 1 Test No. 4 Date 5-29-14
 Company Landmark Resources Inc Elevation 3102 KB 3091 GL
 Address 1666 S. Voss Rd. STE 600 Houston TX 77057
 Co. Rep / Geo. Terry McLeod Rig Martin 22
 Location: Sec. 1 Twp. 17 Rge. 34 Co. SCOTT State KS

Interval Tested 4646-4715 Zone Tested Johnson
 Anchor Length 69 Drill Pipe Run 4405 Mud Wt. 9.5
 Top Packer Depth 4641 Drill Collars Run 236 Vis 58
 Bottom Packer Depth 4646 Wt. Pipe Run Ø WL 9.6
 Total Depth 4715 Chlorides 6000 ppm System LCM 2
 Blow Description IF: Built to 2" Blow
IS: No Return Blow
FF: Built to 5" Blow
FS: No Return Blow

Rec	Feet of	%gas	%oil	%water	%mud
<u>216</u>	<u>Feet of GIP</u>	<u>100</u>			
<u>30</u>	<u>Feet of OCM</u>		<u>30</u>		<u>70</u>
<u>60</u>	<u>Feet of DCGM</u>	<u>30</u>	<u>30</u>		<u>40</u>

Rec Total 90 BHT 123 Gravity — API RW —@ —° F Chlorides — ppm

(A) Initial Hydrostatic 2339 Test 1250 T-On Location 01:30
 (B) First Initial Flow 32 Jars — T-Started 02:27
 (C) First Final Flow 47 Safety Joint 75 T-Open 04:40
 (D) Initial Shut-In 884 Circ Sub NC T-Pulled 08:20
 (E) Second Initial Flow 49 Hourly Standby — T-Out 10:40
 (F) Second Final Flow 64 Mileage RT = 32 49.60 Comments —
 (G) Final Shut-In 1178 Sampler —
 (H) Final Hydrostatic 2303 Straddle — Ruined Shale Packer —
 Shale Packer 250 Ruined Packer —
 Extra Packer — Extra Copies —
 Extra Recorder — Sub Total 0
 Day Standby — Total 1624.60
 Accessibility — MP/DST Disc't —
 Sub Total 1624.60

Approved By Terry McLeod Our Representative Mike Roberts

Trilobite Testing Inc. shall not be liable for damaged of any kind of the property or personnel of the one for whom a test is made, or for any loss suffered or sustained, directly or indirectly, through the use of its equipment, or its statements or opinion concerning the results of any test, tools lost or damaged in the hole shall be paid for at cost by the party for whom the test is made.