



**TRILOBITE TESTING, INC**

# DRILL STEM TEST REPORT

Berexco LLC  
 2020 N. Bramblewood  
 Wichita KS 67206  
 ATTN: Bryan Bynog

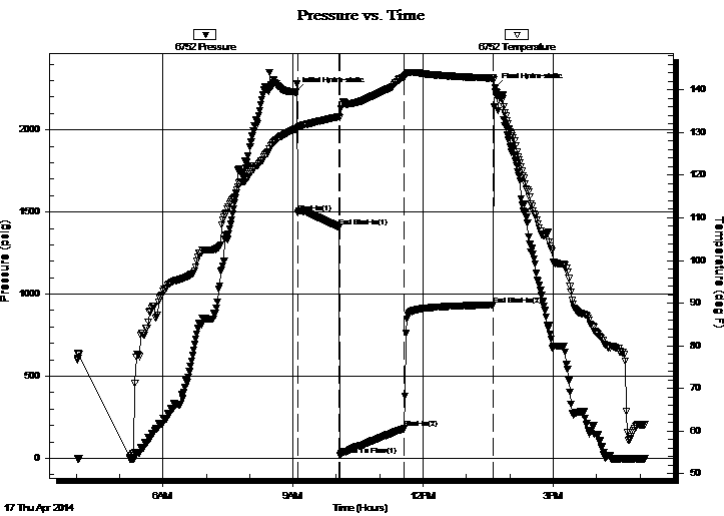
**11-1S-37W Cheyenne KS**  
**Deyle #1-11**  
 Job Ticket: 56881 **DST#: 5**  
 Test Start: 2014.04.17 @ 04:02:00

## GENERAL INFORMATION:

Formation: **Pawnee**  
 Deviated: No Whipstock: ft (KB)  
 Time Tool Opened: 10:05:00  
 Time Test Ended: 17:07:00  
 Interval: **4537.00 ft (KB) To 4580.00 ft (KB) (TVD)**  
 Total Depth: 4580.00 ft (KB) (TVD)  
 Hole Diameter: 7.88 inches Hole Condition: Good  
 Test Type: Conventional Bottom Hole (Reset)  
 Tester: Ryan Nichols  
 Unit No: 58  
 Reference Elevations: 3227.00 ft (KB)  
 3218.00 ft (CF)  
 KB to GR/CF: 9.00 ft

**Serial #: 6752 Inside**  
 Press@RunDepth: 181.01 psig @ 4538.00 ft (KB) Capacity: 8000.00 psig  
 Start Date: 2014.04.17 End Date: 2014.04.17 Last Calib.: 2014.04.17  
 Start Time: 04:02:01 End Time: 17:07:00 Time On Btm: 2014.04.17 @ 09:03:30  
 Time Off Btm: 2014.04.17 @ 13:39:30

**TEST COMMENT:** 30 IF - Surface blow built to 1/4"  
 60 ISI - No return  
 90 FF - Surface blow built to BoB @ 30 mins  
 120 FSI - Surface blow built to 2 1/4"



## PRESSURE SUMMARY

Time (Min.)	Pressure (psig)	Temp (deg F)	Annotation
0	2230.56	130.82	Initial Hydro-static
3	1494.03	131.09	Shut-In(1)
60	1406.56	133.71	End Shut-In(1)
62	20.43	133.48	Open To Flow (1)
150	181.01	142.98	Shut-In(2)
273	934.39	142.76	End Shut-In(2)
276	2255.10	139.53	Final Hydro-static

## Recovery

Length (ft)	Description	Volume (bbl)
60.00	GOCM - 5%G - 20%O - 75%M	0.30
360.00	GO - 30%G 70%O	1.77
30.00	GO - 15%G - 85%O	0.15

## Gas Rates

	Choke (inches)	Pressure (psig)	Gas Rate (Mcf/d)

\* Recovery from multiple tests



**TRILOBITE  
TESTING, INC**

# DRILL STEM TEST REPORT

## FLUID SUMMARY

Berexco LLC  
2020 N. Bramblewood  
Wichita KS 67206  
ATTN: Bryan Bynog

**11-1S-37W Cheyenne KS**  
**Deyle #1-11**  
Job Ticket: 56881      **DST#: 5**  
Test Start: 2014.04.17 @ 04:02:00

### Mud and Cushion Information

Mud Type: Gel Chem	Cushion Type:	Oil API: 39 deg API
Mud Weight: 9.00 lb/gal	Cushion Length: ft	Water Salinity: ppm
Viscosity: 102.00 sec/qt	Cushion Volume: bbl	
Water Loss: 6.00 in <sup>3</sup>	Gas Cushion Type:	
Resistivity: ohm.m	Gas Cushion Pressure: psig	
Salinity: 600.00 ppm		
Filter Cake: 2.00 inches		

### Recovery Information

Recovery Table

Length ft	Description	Volume bbl
60.00	GOCM - 5%G - 20%o - 75%M	0.295
360.00	GO - 30%G 70%o	1.770
30.00	GO - 15%G - 85%o	0.148

Total Length: 450.00 ft      Total Volume: 2.213 bbl

Num Fluid Samples: 0      Num Gas Bombs: 0      Serial #:

Laboratory Name:      Laboratory Location:

Recovery Comments: OIL API = 40 @ 70 DEG F = 39 COR 60 DEG F

