



**TRILOBITE
TESTING, INC**

DRILL STEM TEST REPORT

Woolsey Operating Co

12-35S-13W Barber

125 N Market STE 1000
Wichita, KS 67202

MAC 1

Job Ticket: 58978

DST#: 2

ATTN: Bill Klaver

Test Start: 2014.04.05 @ 15:16:13

GENERAL INFORMATION:

Formation: **Mississippi**

Deviated: No Whipstock: ft (KB)

Time Tool Opened: 17:22:58

Time Test Ended: 01:00:58

Test Type: Conventional Bottom Hole (Reset)

Tester: Leal Cason

Unit No: 74

Interval: 4862.00 ft (KB) To 4928.00 ft (KB) (TVD)

Reference Elevations: 1469.00 ft (KB)

Total Depth: 4928.00 ft (KB) (TVD)

1457.00 ft (CF)

Hole Diameter: 7.88 inches Hole Condition: Good

KB to GR/CF: 12.00 ft

Serial #: 6798

Inside

Press@RunDepth: 280.28 psig @ 4863.00 ft (KB)

Capacity: 8000.00 psig

Start Date: 2014.04.05

End Date:

2014.04.06

Last Calib.:

2014.04.06

Start Time:

15:16:14

End Time:

01:00:58

Time On Btm:

2014.04.05 @ 17:20:43

Time Off Btm:

2014.04.05 @ 22:01:13

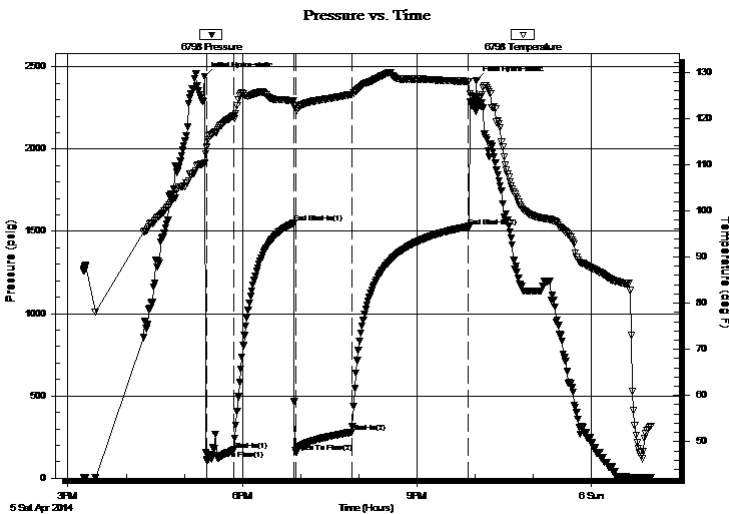
TEST COMMENT: IF: Strong Blow , BOB in 45 seconds

IS: 1 inch Blow Back

FF: Strong Blow , BOB immediate, GTS in 9 minutes, Gauged Gas, Caught Sample

FS: 3 inch Blow Back

PRESSURE SUMMARY



Time (Min.)	Pressure (psig)	Temp (deg F)	Annotation
0	2443.58	110.32	Initial Hydro-static
3	113.61	113.67	Open To Flow (1)
30	168.36	120.45	Shut-In(1)
92	1549.65	123.79	End Shut-In(1)
95	155.86	121.99	Open To Flow (2)
152	280.28	125.20	Shut-In(2)
273	1529.87	128.00	End Shut-In(2)
281	2417.33	123.16	Final Hydro-static

Recovery

Length (ft)	Description	Volume (bbl)
0.00	4409 GIP	0.00
120.00	MOCW 10%M 10%O 80%W	0.59
243.00	GMOCW 10%G 16%M 24%O 50%W	2.89
93.00	GCM 20%G 80%M	1.30

* Recovery from multiple tests

Gas Rates

	Choke (inches)	Pressure (psig)	Gas Rate (Mcf/d)
First Gas Rate	0.25	7.00	33.95
Last Gas Rate	0.25	19.00	52.99
Max. Gas Rate	0.25	19.00	52.99



**TRILOBITE
TESTING, INC**

DRILL STEM TEST REPORT

FLUID SUMMARY

Woolsey Operating Co

12-35S-13W Barber

125 N Market STE 1000
Wichita, KS 67202

MAC 1

Job Ticket: 58978

DST#: 2

ATTN: Bill Klaver

Test Start: 2014.04.05 @ 15:16:13

Mud and Cushion Information

Mud Type: Gel Chem

Cushion Type:

Oil API:

deg API

Mud Weight: 9.00 lb/gal

Cushion Length:

ft

Water Salinity: 125000 ppm

Viscosity: 57.00 sec/qt

Cushion Volume:

bbbl

Water Loss: 8.78 in³

Gas Cushion Type:

Resistivity: ohm.m

Gas Cushion Pressure:

psig

Salinity: 3000.00 ppm

Filter Cake: 0.02 inches

Recovery Information

Recovery Table

Length ft	Description	Volume bbbl
0.00	4409 GIP	0.000
120.00	MOCW 10%M 10%O 80%W	0.590
243.00	GMOCW 10%G 16%M 24%O 50%W	2.889
93.00	GCM 20%G 80%M	1.305

Total Length: 456.00 ft Total Volume: 4.784 bbl

Num Fluid Samples: 0

Num Gas Bombs: 0

Serial #:

Laboratory Name:

Laboratory Location:

Recovery Comments: RW w as .13 @ 40 degrees



**TRILOBITE
TESTING, INC.**

DRILL STEM TEST REPORT

GAS RATES

Woolsey Operating Co

12-35S-13W Barber

125 N Market STE 1000
Wichita, KS 67202

MAC 1

Job Ticket: 58978

DST#: 2

ATTN: Bill Klaver

Test Start: 2014.04.05 @ 15:16:13

Gas Rates Information

Temperature: 59 (deg F)
Relative Density: 0.65
Z Factor: 0.8

Gas Rates Table

Flow Period	Elapsed Time	Choke (inches)	Pressure (psig)	Gas Rate (Mcf/d)
2	10	0.25	7.00	33.95
2	20	0.25	11.00	40.30
2	30	0.25	13.00	43.47
2	40	0.25	15.00	46.64
2	50	0.25	17.00	49.81
2	60	0.25	19.00	52.99

Pressure vs. Time

