



DRILL STEM TEST REPORT

Prepared For: **L.B EXPLORATION INC**

2135 2 ND RD
HOLYROOD KS 67450

ATTN: JIM MUSGROVE

25-18S-15W BARTON

SCHNEIDER#1

Start Date: 2010.07.06 @ 08:30:00

End Date: 2010.07.06 @ 14:51:30

Job Ticket #: 1106 DST #: 3

Eagle Testers LLC.

P.O.Box 1011, Great Bend, KS 67530

620-617-7548

Printed: 2010.07.06 @ 09:01:50

L.B EXPLORATION INC
SCHNEIDER#1
25-18S-15W BARTON
DST # 3
ARBUCKLE
2010.07.06



DRILL STEM TEST REPORT

L.B EXPLORATION INC

SCHNEIDER#1

2135 2 ND RD
HOLYROOD KS 67450

25-18S-15W BARTON

Job Ticket: 1106

DST#: 3

ATTN: JIM MUSGROVE

Test Start: 2010.07.06 @ 08:30:00

GENERAL INFORMATION:

Formation: **ARBUCKLE**

Deviated: No Whipstock: ft (KB)

Time Tool Opened: 10:42:30

Time Test Ended: 14:51:30

Test Type: Conventional Bottom Hole (Initial)

Tester: DAVID NICHOLS

Unit No: 15 22 M GB

Interval: 3506.00 ft (KB) To 3519.00 ft (KB) (TVD)

Reference Elevations: 1904.00 ft (KB)

Total Depth: 3519.00 ft (KB) (TVD)

1896.00 ft (CF)

Hole Diameter: 7.88 inches Hole Condition: Fair

KB to GR/CF: 8.00 ft

Serial #: 6666

Inside

Press @ RunDepth: 104.39 psig @ 3515.00 ft (KB)

Capacity: 5000.00 psig

Start Date: 2010.07.06

End Date:

2010.07.06

Last Calib.:

2010.07.06

Start Time: 08:30:00

End Time:

14:51:30

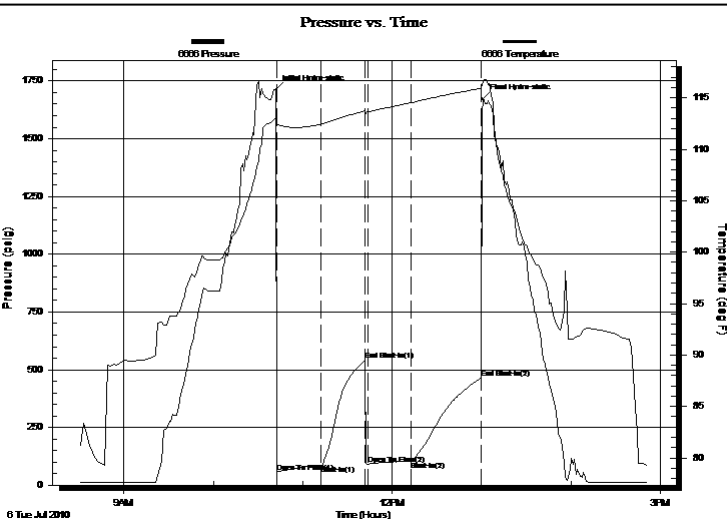
Time On Btm:

2010.07.06 @ 10:42:00

Time Off Btm:

2010.07.06 @ 13:01:00

TEST COMMENT: 30-INITIAL OPENING WEAK BUILDING BLOW BUILT TO 5 INCHES INTO WATER
30-INITIAL SHUT IN NO BLOW BACK
45-FINAL OPENING VERY WEAK BLUIDING BLOW BUILT TO 3 INCHES INTO WATER
60-FINAL SHUT IN NO BLOW BACK



PRESSURE SUMMARY

Time (Min.)	Pressure (psig)	Temp (deg F)	Annotation
0	1711.42	112.95	Initial Hydro-static
1	54.55	112.37	Open To Flow (1)
30	86.29	112.44	Shut-In(1)
60	542.79	113.73	End Shut-In(1)
62	90.84	113.64	Open To Flow (2)
91	104.39	114.53	Shut-In(2)
138	462.97	115.89	End Shut-In(2)
139	1673.15	116.60	Final Hydro-static

Recovery

Length (ft)	Description	Volume (bbl)
60.00	GAS IN PIPE 100%G	0.30
50.00	CLEAN GASSY OIL 100%O	0.25
60.00	MUD CUT OIL 40%M60%O	0.30

Gas Rates

	Choke (inches)	Pressure (psig)	Gas Rate (Mcf/d)



DRILL STEM TEST REPORT

L.B EXPLORATION INC

SCHNEIDER#1

2135 2 ND RD
HOLYROOD KS 67450

25-18S-15W BARTON

Job Ticket: 1106

DST#: 3

ATTN: JIM MUSGROVE

Test Start: 2010.07.06 @ 08:30:00

GENERAL INFORMATION:

Formation: **ARBUCKLE**

Deviated: No Whipstock: ft (KB)

Time Tool Opened: 10:42:30

Time Test Ended: 14:51:30

Test Type: Conventional Bottom Hole (Initial)

Tester: DAVID NICHOLS

Unit No: 15 22 M GB

Interval: 3506.00 ft (KB) To 3519.00 ft (KB) (TVD)

Reference Elevations: 1904.00 ft (KB)

Total Depth: 3519.00 ft (KB) (TVD)

1896.00 ft (CF)

Hole Diameter: 7.88 inches Hole Condition: Fair

KB to GR/CF: 8.00 ft

Serial #: 6651 Outside

Press @ RunDepth: 462.97 psig @ 3516.00 ft (KB)

Capacity: 5000.00 psig

Start Date: 2010.07.06

End Date:

2010.07.06

Last Calib.:

2010.07.06

Start Time: 08:30:00

End Time:

14:51:30

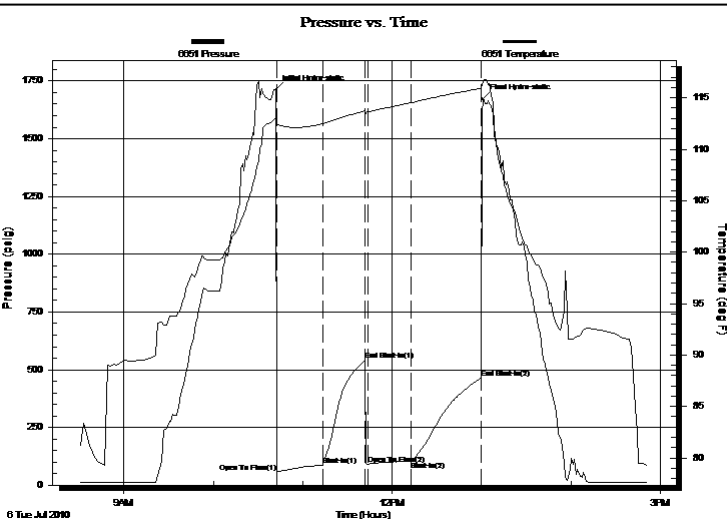
Time On Btm:

2010.07.06 @ 10:42:00

Time Off Btm:

2010.07.06 @ 13:01:00

TEST COMMENT: 30-INITIAL OPENING WEAK BUILDING BLOW BUILT TO 5 INCHES INTO WATER
30-INITIAL SHUT IN NO BLOW BACK
45-FINAL OPENING VERY WEAK BLUIDING BLOW BUILT TO 3 INCHES INTO WATER
60-FINAL SHUT IN NO BLOW BACK



PRESSURE SUMMARY

Time (Min.)	Pressure (psig)	Temp (deg F)	Annotation
0	1711.42	112.95	Initial Hydro-static
1	54.55	112.37	Open To Flow (1)
32	87.32	112.49	Shut-In(1)
60	542.79	113.73	End Shut-In(1)
62	90.84	113.64	Open To Flow (2)
91	104.39	114.53	Shut-In(2)
138	462.97	115.89	End Shut-In(2)
139	1673.15	116.60	Final Hydro-static

Recovery

Length (ft)	Description	Volume (bbl)
60.00	GAS IN PIPE 100%G	0.30
50.00	CLEAN GASSY OIL 100%O	0.25
60.00	MUD CUT OIL 40%M60%O	0.30

Gas Rates

	Choke (inches)	Pressure (psig)	Gas Rate (Mcf/d)



DRILL STEM TEST REPORT

TOOL DIAGRAM

L.B EXPLORATION INC

SCHNEIDER#1

2135 2 ND RD
HOLYROOD KS 67450

25-18S-15W BARTON

Job Ticket: 1106

DST#: 3

ATTN: JIM MUSGROVE

Test Start: 2010.07.06 @ 08:30:00

Tool Information

Drill Pipe:	Length: 2951.00 ft	Diameter: 3.88 inches	Volume: 43.16 bbl	Tool Weight: 2000.00 lb
Heavy Wt. Pipe:	Length: 0.00 ft	Diameter: 0.00 inches	Volume: 0.00 bbl	Weight set on Packer: 20000.00 lb
Drill Collar:	Length: 540.00 ft	Diameter: 2.25 inches	Volume: 2.66 bbl	Weight to Pull Loose: 80000.00 lb
			Total Volume: 45.82 bbl	Tool Chased 0.00 ft
Drill Pipe Above KB:	0.00 ft			String Weight: Initial 70000.00 lb
Depth to Top Packer:	3506.00 ft			Final 70000.00 lb
Depth to Bottom Packer:	ft			
Interval between Packers:	13.00 ft			
Tool Length:	28.00 ft			
Number of Packers:	2	Diameter: 6.75 inches		

Tool Comments:

Tool Description	Length (ft)	Serial No.	Position	Depth (ft)	Accum. Lengths
SHUT IN TOOL	5.00			3496.00	
HYD S.I. Tool	5.00			3501.00	
TRAVEL COLER	2.00			3503.00	
Packer	3.00			3506.00	15.00 Bottom Of Top Packer
travel collar	2.00			3508.00	13.00 Tool Interval
Packer	3.00			3511.00	
Anchor	3.00			3514.00	
Recorder	1.00	6666	Inside	3515.00	
Recorder	1.00	6651	Outside	3516.00	
BULL PLUG	3.00			3519.00	1000027.00 Bottom Packers & Anchor
Total Tool Length:	28.00				



DRILL STEM TEST REPORT

FLUID SUMMARY

L.B EXPLORATION INC

SCHNEIDER#1

2135 2 ND RD
HOLYROOD KS 67450

25-18S-15W BARTON

ATTN: JIM MUSGROVE

Job Ticket: 1106

DST#: 3

Test Start: 2010.07.06 @ 08:30:00

Mud and Cushion Information

Mud Type: Gel Chem
Mud Weight: 9.00 lb/gal
Viscosity: 51.00 sec/qt
Water Loss: 8.80 in³
Resistivity: ohm.m
Salinity: 5000.00 ppm
Filter Cake: inches

Cushion Type:
Cushion Length: ft
Cushion Volume: bbl
Gas Cushion Type:
Gas Cushion Pressure: psig

Oil API: 34 deg API
Water Salinity: ppm

Recovery Information

Recovery Table

Length ft	Description	Volume bbl
60.00	GAS IN PIPE 100%G	0.295
50.00	CLEAN GASSY OIL 100%O	0.246
60.00	MUD CUT OIL 40%M60%O	0.295

Total Length: 170.00 ft Total Volume: 0.836 bbl

Num Fluid Samples: 0

Num Gas Bombs: 0

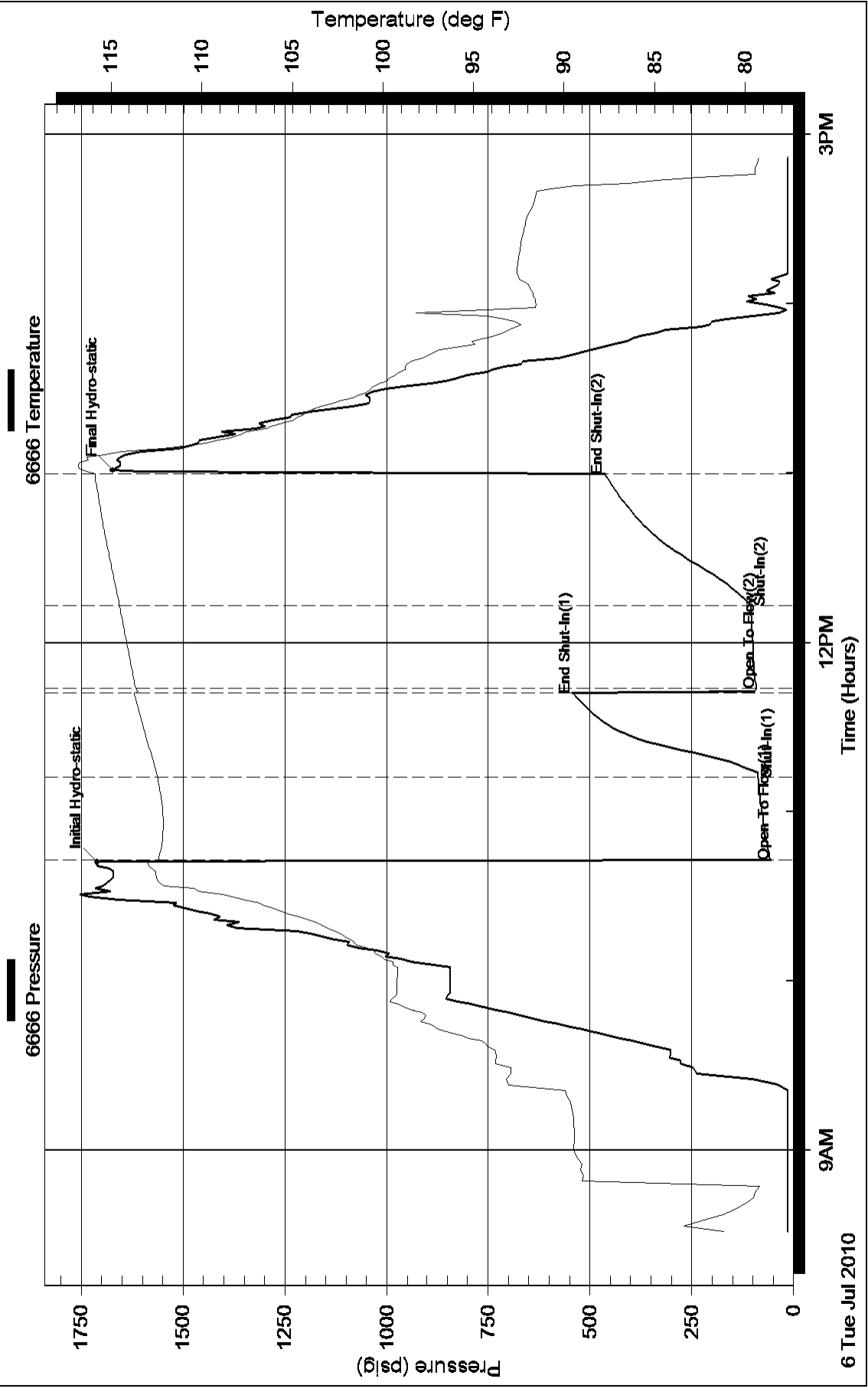
Serial #:

Laboratory Name:

Laboratory Location:

Recovery Comments:

Pressure vs. Time



Pressure vs. Time

