



**TRILOBITE
TESTING, INC.**

DRILL STEM TEST REPORT

Hartman Oil Co
10500 E Berkeley Sq Ste 100
Wichita, KS 67206
ATTN: Kitt Noah

2-24S-13W Stafford
Heyen 2
Job Ticket: 51801 **DST#: 2**
Test Start: 2014.06.29 @ 13:12:59

GENERAL INFORMATION:

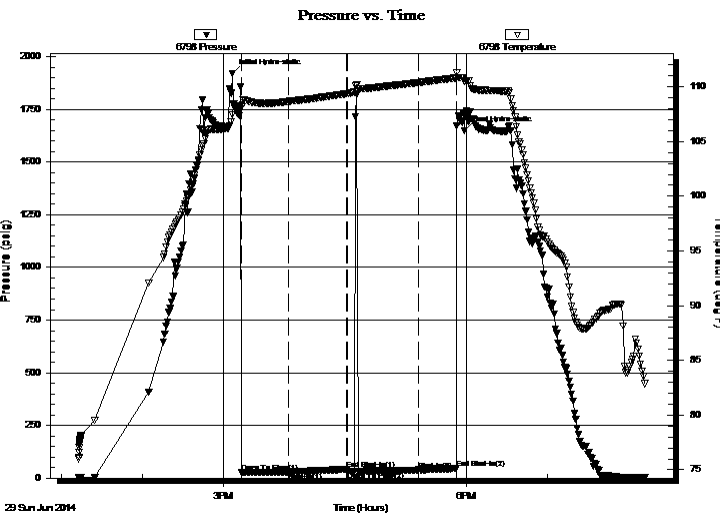
Formation: **LKC "I"**
Deviated: No Whipstock: ft (KB)
Time Tool Opened: 15:13:44
Time Test Ended: 20:12:14
Interval: **3650.00 ft (KB) To 3664.00 ft (KB) (TVD)**
Total Depth: 3664.00 ft (KB) (TVD)
Hole Diameter: 7.88 inches Hole Condition: Good
Test Type: Conventional Bottom Hole (Reset)
Tester: Leal Cason
Unit No: 74
Reference Elevations: 1908.00 ft (KB)
1900.00 ft (CF)
KB to GR/CF: 8.00 ft

Serial #: 6798

Inside

Press @ Run Depth: 38.88 psig @ 3651.00 ft (KB) Capacity: 8000.00 psig
Start Date: 2014.06.29 End Date: 2014.06.29 Last Calib.: 2014.06.29
Start Time: 13:13:00 End Time: 20:12:14 Time On Btm: 2014.06.29 @ 15:06:44
Time Off Btm: 2014.06.29 @ 17:58:29

TEST COMMENT: IF: Weak Surface Blow , Dead @ 12 minutes
IS: No Blow Back
FF: No Blow , Flushed Tool, No Blow
FS: No Blow Back



PRESSURE SUMMARY

| Time (Min.) | Pressure (psig) | Temp (deg F) | Annotation |
|-------------|-----------------|--------------|----------------------|
| 0 | 1920.54 | 107.46 | Initial Hydro-static |
| 7 | 25.38 | 108.19 | Open To Flow (1) |
| 42 | 29.06 | 108.67 | Shut-In(1) |
| 85 | 42.08 | 109.37 | End Shut-In(1) |
| 85 | 31.70 | 109.37 | Open To Flow (2) |
| 90 | 32.74 | 109.50 | Flushed Tool |
| 138 | 38.88 | 110.39 | Shut-In(2) |
| 166 | 45.98 | 110.81 | End Shut-In(2) |
| 172 | 1649.93 | 110.52 | Final Hydro-static |

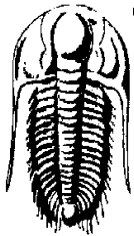
Recovery

| Length (ft) | Description | Volume (bbl) |
|-------------|-------------|--------------|
| 5.00 | Mud | 0.02 |
| | | |
| | | |
| | | |
| | | |

* Recovery from multiple tests

Gas Rates

| Choke (inches) | Pressure (psig) | Gas Rate (Mcf/d) |
|----------------|-----------------|------------------|
| | | |



**TRILOBITE
TESTING, INC.**

DRILL STEM TEST REPORT

FLUID SUMMARY

Hartman Oil Co
10500 E Berkeley Sq Ste 100
Wichita, KS 67206
ATTN: Kitt Noah

2-24S-13W Stafford
Heyen 2
Job Ticket: 51801 **DST#: 2**
Test Start: 2014.06.29 @ 13:12:59

Mud and Cushion Information

| | | | |
|----------------------------------|----------------------------|-----------------|---------|
| Mud Type: Gel Chem | Cushion Type: | Oil API: | deg API |
| Mud Weight: 9.00 lb/gal | Cushion Length: ft | Water Salinity: | ppm |
| Viscosity: 46.00 sec/qt | Cushion Volume: bbl | | |
| Water Loss: 9.98 in ³ | Gas Cushion Type: | | |
| Resistivity: ohm.m | Gas Cushion Pressure: psig | | |
| Salinity: 7600.00 ppm | | | |
| Filter Cake: 0.02 inches | | | |

Recovery Information

Recovery Table

| Length ft | Description | Volume bbl |
|--------------|-------------|---------------|
| 5.00 | Mud | 0.025 |

Total Length: 5.00 ft Total Volume: 0.025 bbl
 Num Fluid Samples: 0 Num Gas Bombs: 0 Serial #:
 Laboratory Name: Laboratory Location:
 Recovery Comments:

