



**TRILOBITE TESTING, INC**

# DRILL STEM TEST REPORT

Carrie Exploration and Development

**12-19s-11w-Barton**

210 West 22nd Street  
Hays Kansas 67601

**Bryant C-1**

Job Ticket: 60301

**DST#: 1**

ATTN: Steve Reed

Test Start: 2014.08.01 @ 22:13:00

## GENERAL INFORMATION:

Formation: **Lansing A-B**

Deviated: No Whipstock: ft (KB)

Time Tool Opened: 00:15:00

Time Test Ended: 03:50:00

Test Type: Conventional Bottom Hole (Initial)

Tester: Dustin Ellis

Unit No: S2-Great Bend-55

**Interval: 3030.00 ft (KB) To 3070.00 ft (KB) (TVD)**

Reference Elevations: 1783.00 ft (KB)

Total Depth: 3070.00 ft (KB) (TVD)

1775.00 ft (CF)

Hole Diameter: 7.88 inches Hole Condition: Fair

KB to GR/CF: 8.00 ft

**Serial #: 6999 Inside**

Press@RunDepth: 33.09 psig @ 3065.00 ft (KB)

Capacity: 8000.00 psig

Start Date: 2014.08.01

End Date:

2014.08.02

Last Calib.:

2014.08.02

Start Time: 22:14:00

End Time:

03:50:00

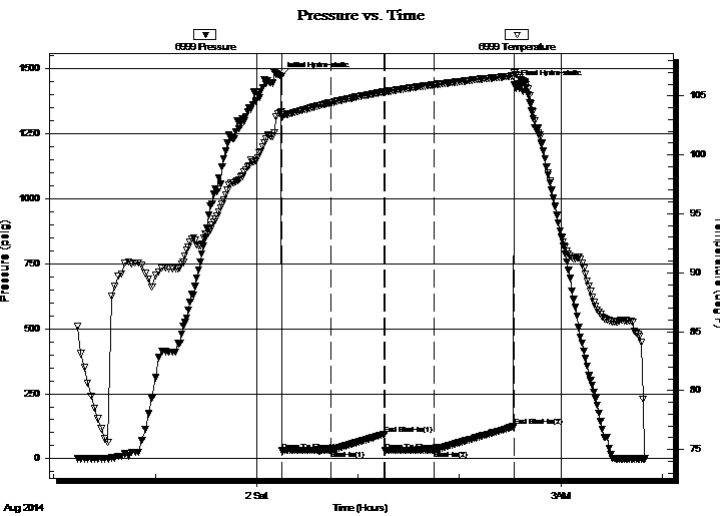
Time On Btm:

2014.08.02 @ 00:14:30

Time Off Btm:

2014.08.02 @ 02:32:30

**TEST COMMENT:** 1st Open 30 minutes Weak building blow built to 4 inches into a 5 gallon bucket of water.  
1st Shut in 30 minutes No blow back.  
2nd Open 30 minutes Weak building blow built to 5 inches.  
2nd Shut in 45 minutes No blow back



## PRESSURE SUMMARY

Time (Min.)	Pressure (psig)	Temp (deg F)	Annotation
0	1471.27	103.65	Initial Hydro-static
1	30.53	103.18	Open To Flow (1)
30	31.32	104.43	Shut-In(1)
61	95.05	105.33	End Shut-In(1)
62	30.18	105.33	Open To Flow (2)
91	33.09	105.94	Shut-In(2)
138	123.65	106.70	End Shut-In(2)
138	1438.23	106.99	Final Hydro-static

## Recovery

Length (ft)	Description	Volume (bbl)
10.00	Mud 100%	0.14

## Gas Rates

	Choke (inches)	Pressure (psig)	Gas Rate (Mcf/d)



**TRILOBITE  
TESTING, INC**

# DRILL STEM TEST REPORT

**FLUID SUMMARY**

Carrie Exploration and Development

**12-19s-11w-Barton**

210 West 22nd Street  
Hays Kansas 67601

**Bryant C-1**

Job Ticket: 60301

**DST#: 1**

ATTN: Steve Reed

Test Start: 2014.08.01 @ 22:13:00

## Mud and Cushion Information

Mud Type: Gel Chem

Cushion Type:

Oil API:

deg API

Mud Weight: 9.00 lb/gal

Cushion Length:

ft

Water Salinity:

ppm

Viscosity: 50.00 sec/qt

Cushion Volume:

bbbl

Water Loss: 7.99 in<sup>3</sup>

Gas Cushion Type:

Resistivity: ohm.m

Gas Cushion Pressure:

psig

Salinity: 3000.00 ppm

Filter Cake: 1.00 inches

## Recovery Information

Recovery Table

Length ft	Description	Volume bbl
10.00	Mud 100%	0.140

Total Length: 10.00 ft      Total Volume: 0.140 bbl

Num Fluid Samples: 0

Num Gas Bombs: 0

Serial #:

Laboratory Name:

Laboratory Location:

Recovery Comments:

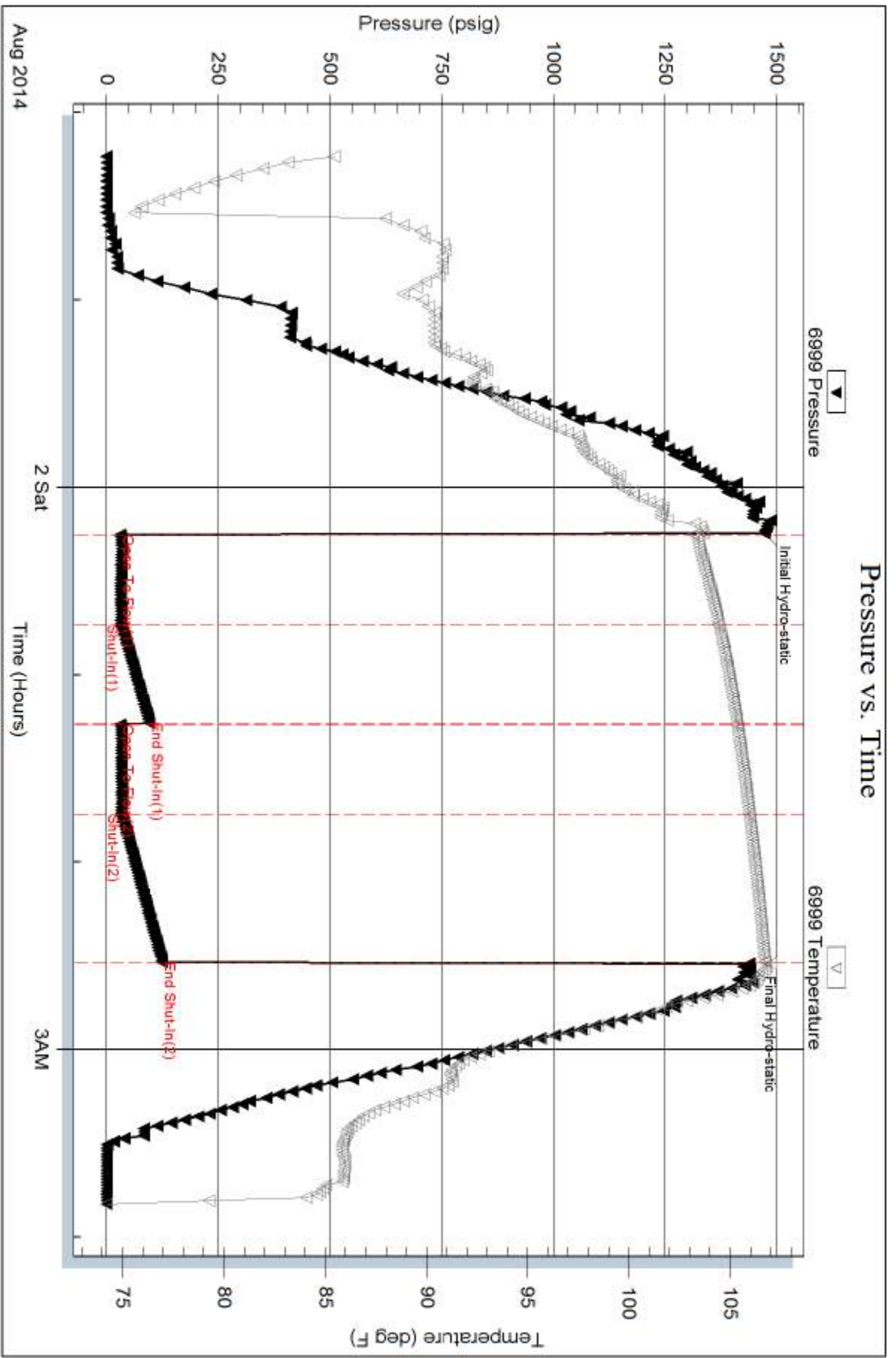
Serial #: 6999

Inside

Carrie Exploration and Development

Bryant C-1

DST Test Number: 1



Trilobite Testing, Inc

Ref. No: 60301

Printed: 2014.08.02 @ 05:29:56