



TRILOBITE TESTING, INC

DRILL STEM TEST REPORT

Berexco LLC

34-9-15, Osborne, KS

2020 N Bramblewood
Wichita KS 67206

John #2

Job Ticket: 58963

DST#: 2

ATTN: Steve Reed

Test Start: 2014.05.27 @ 01:15:00

GENERAL INFORMATION:

Formation: **KC"C-G"**

Deviated: No Whipstock: ft (KB)

Time Tool Opened: 04:24:15

Time Test Ended: 09:32:30

Test Type: Conventional Bottom Hole (Reset)

Tester: Brett Dickinson

Unit No: 59

Interval: 3200.00 ft (KB) To 3285.00 ft (KB) (TVD)

Reference Elevations: 1948.00 ft (KB)

Total Depth: 3285.00 ft (KB) (TVD)

1941.00 ft (CF)

Hole Diameter: 7.88 inches Hole Condition: Fair

KB to GR/CF: 7.00 ft

Serial #: 8957 Outside

Press@RunDepth: 113.21 psig @ 3201.00 ft (KB)

Capacity: 8000.00 psig

Start Date: 2014.05.27

End Date:

2014.05.27

Last Calib.:

2014.05.27

Start Time: 01:15:05

End Time:

09:32:29

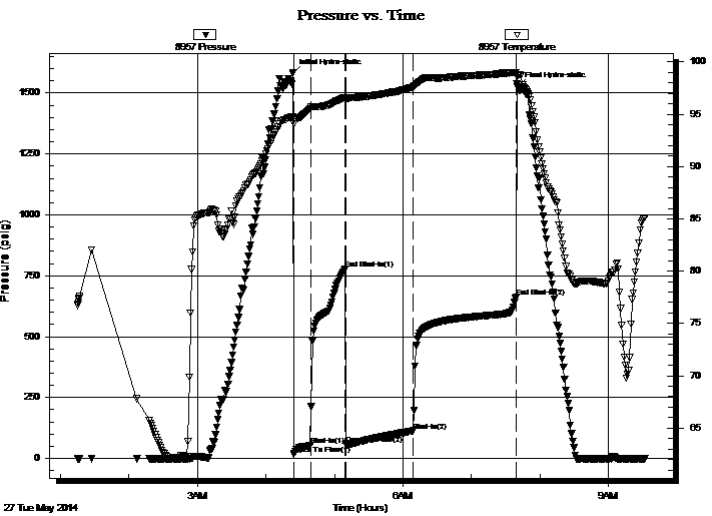
Time On Btm:

2014.05.27 @ 04:23:30

Time Off Btm:

2014.05.27 @ 07:40:30

TEST COMMENT: IF-5 3/4in blow
IS-No blow
FF-7 1/2in blow
FS-No blow



PRESSURE SUMMARY

Time (Min.)	Pressure (psig)	Temp (deg F)	Annotation
0	1581.02	94.78	Initial Hydro-static
1	17.88	94.06	Open To Flow (1)
16	55.06	95.57	Shut-In(1)
46	776.14	96.63	End Shut-In(1)
47	57.52	96.41	Open To Flow (2)
106	113.21	97.63	Shut-In(2)
196	661.40	99.01	End Shut-In(2)
197	1526.23	98.68	Final Hydro-static

Recovery

Length (ft)	Description	Volume (bbl)
180.00	MCW 80%W 20%M	2.25
30.00	OS MCW 60%W 40%M	0.42

* Recovery from multiple tests

Gas Rates

	Choke (inches)	Pressure (psig)	Gas Rate (Mcf/d)



**TRILOBITE
TESTING, INC**

DRILL STEM TEST REPORT

FLUID SUMMARY

Berexco LLC

34-9-15, Osborne, KS

2020 N Bramblewood
Wichita KS 67206

John #2

Job Ticket: 58963

DST#: 2

ATTN: Steve Reed

Test Start: 2014.05.27 @ 01:15:00

Mud and Cushion Information

Mud Type: Gel Chem

Cushion Type:

Oil API:

deg API

Mud Weight: 10.00 lb/gal

Cushion Length:

ft

Water Salinity:

32000 ppm

Viscosity: 50.00 sec/qt

Cushion Volume:

bbbl

Water Loss: 11.99 in³

Gas Cushion Type:

Resistivity: ohm.m

Gas Cushion Pressure:

psig

Salinity: 7000.00 ppm

Filter Cake: inches

Recovery Information

Recovery Table

Length ft	Description	Volume bbl
180.00	MCW 80%W 20%M	2.252
30.00	OS MCW 60%W 40%M	0.421

Total Length: 210.00 ft

Total Volume: 2.673 bbl

Num Fluid Samples: 0

Num Gas Bombs: 0

Serial #:

Laboratory Name:

Laboratory Location:

Recovery Comments:

