



TRILOBITE TESTING, INC

DRILL STEM TEST REPORT

Berexco LLC

34-9-15, Osborne, KS

2020 N Bramblewood
Wichita KS 67206

John #2

Job Ticket: 58964

DST#: 3

ATTN: Steve Reed

Test Start: 2014.05.27 @ 18:20:00

GENERAL INFORMATION:

Formation: **KC "H-J"**

Deviated: No Whipstock: ft (KB)

Time Tool Opened: 21:10:30

Time Test Ended: 02:41:45

Test Type: Conventional Bottom Hole (Reset)

Tester: Brett Dickinson

Unit No: 59

Interval: 3285.00 ft (KB) To 3363.00 ft (KB) (TVD)

Reference Elevations: 1948.00 ft (KB)

Total Depth: 3363.00 ft (KB) (TVD)

1941.00 ft (CF)

Hole Diameter: 7.88 inches Hole Condition: Fair

KB to GR/CF: 7.00 ft

Serial #: 8957 Outside

Press@RunDepth: 79.01 psig @ 3286.00 ft (KB)

Capacity: 8000.00 psig

Start Date: 2014.05.27

End Date: 2014.05.28

Last Calib.: 2014.05.28

Start Time: 18:20:05

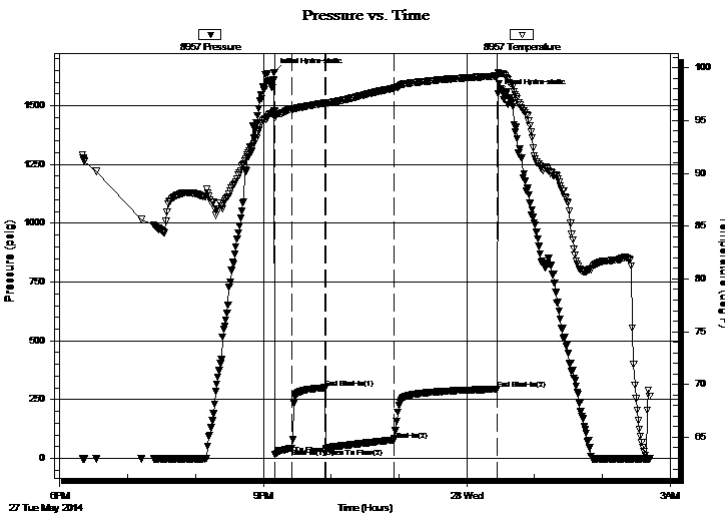
End Time: 02:41:44

Time On Btm: 2014.05.27 @ 21:09:30

Time Off Btm: 2014.05.28 @ 00:28:00

TEST COMMENT: IF-3in blow
IS-No blow
FF-4in blow
FS-No blow

PRESSURE SUMMARY



Time (Min.)	Pressure (psig)	Temp (deg F)	Annotation
0	1641.39	95.83	Initial Hydro-static
1	17.21	95.30	Open To Flow (1)
16	41.86	96.05	Shut-In(1)
46	300.40	96.67	End Shut-In(1)
46	43.06	96.62	Open To Flow (2)
106	79.01	98.07	Shut-In(2)
198	294.31	99.21	End Shut-In(2)
199	1550.52	99.56	Final Hydro-static

Recovery

Length (ft)	Description	Volume (bbl)
60.00	OS VSMCW 5%M 95%W	0.57
60.00	OS MCW 30%M 70%W	0.84
30.00	V/SOWCM 5%O 45%W 50%M	0.42

* Recovery from multiple tests

Gas Rates

	Choke (inches)	Pressure (psig)	Gas Rate (Mcf/d)



**TRILOBITE
TESTING, INC**

DRILL STEM TEST REPORT

FLUID SUMMARY

Berexco LLC

34-9-15, Osborne, KS

2020 N Bramblewood
Wichita KS 67206

John #2

Job Ticket: 58964

DST#: 3

ATTN: Steve Reed

Test Start: 2014.05.27 @ 18:20:00

Mud and Cushion Information

Mud Type: Gel Chem

Cushion Type:

Oil API:

deg API

Mud Weight: 9.00 lb/gal

Cushion Length:

ft

Water Salinity:

44000 ppm

Viscosity: 46.00 sec/qt

Cushion Volume:

bbbl

Water Loss: 10.79 in³

Gas Cushion Type:

Resistivity: ohm.m

Gas Cushion Pressure:

psig

Salinity: 6000.00 ppm

Filter Cake: inches

Recovery Information

Recovery Table

Length ft	Description	Volume bbbl
60.00	OS VSMCW 5%M 95%W	0.568
60.00	OS MCW 30%M 70%W	0.842
30.00	VSOWCM 5%O 45%W 50%M	0.421

Total Length: 150.00 ft

Total Volume: 1.831 bbl

Num Fluid Samples: 0

Num Gas Bombs: 0

Serial #:

Laboratory Name:

Laboratory Location:

Recovery Comments:

