



**TRILOBITE
TESTING, INC**

DRILL STEM TEST REPORT

Shakespeare Oil Company, Inc

14-14s-32w Logan Co, KS

202 W Main ST
Salem IL, 62881 - 1519

Ottley #6-14

Job Ticket: 57030

DST#: 1

ATTN: Tim Priest

Test Start: 2014.07.10 @ 01:18:00

GENERAL INFORMATION:

Formation: **Lansing "B"**

Deviated: No Whipstock: 42.00 ft (KB)

Time Tool Opened: 04:49:00

Time Test Ended: 08:55:30

Test Type: Conventional Bottom Hole (Initial)

Tester: Jace McKinney

Unit No: 75

Interval: 3845.00 ft (KB) To 3870.00 ft (KB) (TVD)

Reference Elevations: 2818.00 ft (KB)

Total Depth: 3870.00 ft (KB) (TVD)

2808.00 ft (CF)

Hole Diameter: 7.88 inches Hole Condition: Poor

KB to GR/CF: 10.00 ft

Serial #: 8675

Inside

Press@RunDepth: 25.53 psig @ 3846.00 ft (KB)

Capacity: 8000.00 psig

Start Date: 2014.07.10

End Date: 2014.07.10

Last Calib.: 2014.07.10

Start Time: 01:18:15

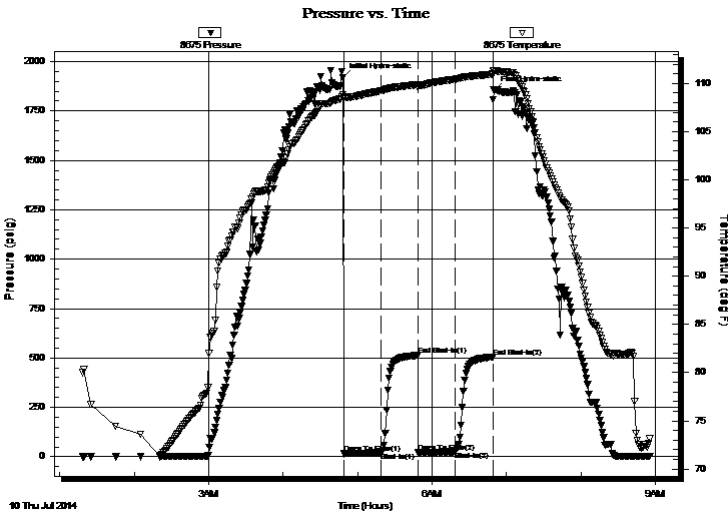
End Time: 08:55:30

Time On Btm: 2014.07.10 @ 04:48:00

Time Off Btm: 2014.07.10 @ 06:49:30

TEST COMMENT: Built to 1/2" blow
No return blow
No blow
No return blow

PRESSURE SUMMARY



| Time (Min.) | Pressure (psig) | Temp (deg F) | Annotation |
|-------------|-----------------|--------------|----------------------|
| 0 | 1917.98 | 108.82 | Initial Hydro-static |
| 1 | 15.36 | 108.45 | Open To Flow (1) |
| 31 | 20.33 | 109.24 | Shut-In(1) |
| 61 | 512.97 | 109.88 | End Shut-In(1) |
| 61 | 20.73 | 109.53 | Open To Flow (2) |
| 91 | 25.53 | 110.43 | Shut-In(2) |
| 121 | 505.11 | 110.95 | End Shut-In(2) |
| 122 | 1855.77 | 111.31 | Final Hydro-static |

Recovery

| Length (ft) | Description | Volume (bbl) |
|-------------|-------------------------|--------------|
| 30.00 | 100% Mud with oil spots | 0.33 |
| | | |
| | | |
| | | |
| | | |

Gas Rates

| | Choke (inches) | Pressure (psig) | Gas Rate (Mcf/d) |
|--|----------------|-----------------|------------------|
| | | | |



**TRILOBITE
TESTING, INC**

DRILL STEM TEST REPORT

FLUID SUMMARY

Shakespeare Oil Company, Inc

14-14s-32w Logan Co, KS

202 W Main ST
Salem IL, 62881 - 1519

Ottley #6-14

Job Ticket: 57030

DST#: 1

ATTN: Tim Priest

Test Start: 2014.07.10 @ 01:18:00

Mud and Cushion Information

Mud Type: Gel Chem

Cushion Type:

Oil API:

deg API

Mud Weight: 9.00 lb/gal

Cushion Length:

ft

Water Salinity:

ppm

Viscosity: 50.00 sec/qt

Cushion Volume:

bbbl

Water Loss: 7.99 in³

Gas Cushion Type:

Resistivity: ohm.m

Gas Cushion Pressure:

psig

Salinity: 2200.00 ppm

Filter Cake: 1.00 inches

Recovery Information

Recovery Table

| Length ft | Description | Volume bbl |
|--------------|--------------------------|---------------|
| 30.00 | 100% Mud w ith oil spots | 0.333 |

Total Length: 30.00 ft Total Volume: 0.333 bbl

Num Fluid Samples: 0

Num Gas Bombs: 0

Serial #:

Laboratory Name:

Laboratory Location:

Recovery Comments:

