



**TRILOBITE  
TESTING, INC**

# DRILL STEM TEST REPORT

Berexco LLC  
2020 N. Bramblewood  
Wichita Ks 67206  
ATTN: Pete Vollmer

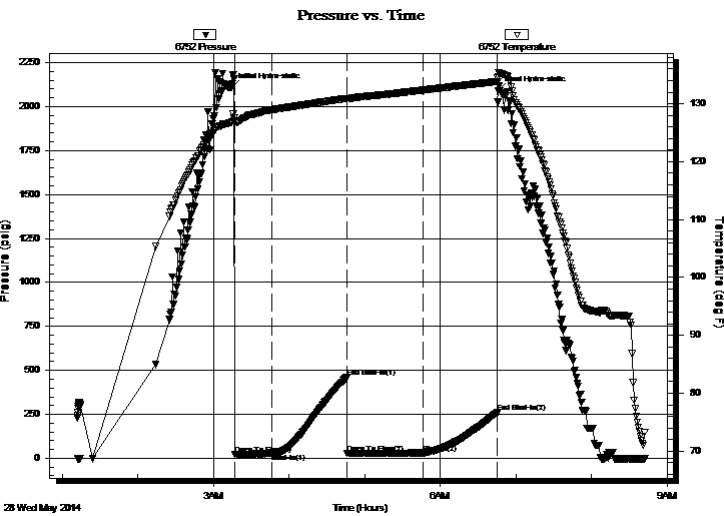
**9-1S-37W**  
**Mears B #2-9**  
Job Ticket: 56900      **DST#: 4**  
Test Start: 2014.05.28 @ 01:12:00

## GENERAL INFORMATION:

Formation: **LKC " C - E "**  
Deviated: No Whipstock: ft (KB)  
Time Tool Opened: 03:16:30  
Time Test Ended: 08:42:09  
Interval: **4312.00 ft (KB) To 4446.00 ft (KB) (TVD)**  
Total Depth: 4446.00 ft (KB) (TVD)  
Hole Diameter: 7.88 inches Hole Condition: Good  
Test Type: Conventional Bottom Hole (Reset)  
Tester: Ryan Nichols  
Unit No: 58  
Reference Elevations: 3278.00 ft (KB)  
3265.00 ft (CF)  
KB to GR/CF: 13.00 ft

**Serial #: 6752      Inside**  
Press@RunDepth: 30.23 psig @ 4313.00 ft (KB)      Capacity: 8000.00 psig  
Start Date: 2014.05.28      End Date: 2014.05.28      Last Calib.: 2014.05.28  
Start Time: 01:12:01      End Time: 08:42:10      Time On Btm: 2014.05.28 @ 03:14:30  
Time Off Btm: 2014.05.28 @ 06:45:50

TEST COMMENT: 30 IF - 3/4" blow built to 1"  
60 ISI - No return  
60 FF- No blow  
60 FSI - No return



## PRESSURE SUMMARY

Time (Min.)	Pressure (psig)	Temp (deg F)	Annotation
0	2105.85	126.79	Initial Hydro-static
2	20.42	127.05	Open To Flow (1)
32	28.92	128.95	Shut-In(1)
92	460.29	130.94	End Shut-In(1)
92	26.83	130.79	Open To Flow (2)
152	30.23	132.34	Shut-In(2)
211	259.97	133.86	End Shut-In(2)
212	2090.08	134.70	Final Hydro-static

## Recovery

Length (ft)	Description	Volume (bbl)
5.00	Mud 100% <sub>m</sub>	0.02

\* Recovery from multiple tests

## Gas Rates

Choke (inches)	Pressure (psig)	Gas Rate (Mcf/d)



**TRILOBITE  
TESTING, INC**

# DRILL STEM TEST REPORT

## FLUID SUMMARY

Berexco LLC

**9-1S-37W**

2020 N. Bramblewood  
Wichita Ks 67206

**Mears B #2-9**

Job Ticket: 56900

**DST#: 4**

ATTN: Pete Vollmer

Test Start: 2014.05.28 @ 01:12:00

### Mud and Cushion Information

Mud Type: Gel Chem

Cushion Type:

Oil API:

deg API

Mud Weight: 9.00 lb/gal

Cushion Length:

ft

Water Salinity:

ppm

Viscosity: 69.00 sec/qt

Cushion Volume:

bbbl

Water Loss: 5.60 in<sup>3</sup>

Gas Cushion Type:

Resistivity: 0.00 ohm.m

Gas Cushion Pressure:

psig

Salinity: 1000.00 ppm

Filter Cake: 2.00 inches

### Recovery Information

Recovery Table

Length ft	Description	Volume bbl
5.00	Mud 100% <sub>m</sub>	0.025

Total Length: 5.00 ft      Total Volume: 0.025 bbl

Num Fluid Samples: 0

Num Gas Bombs: 0

Serial #:

Laboratory Name:

Laboratory Location:

Recovery Comments:

