

DIAMOND TESTING, LLC
P.O. Box 157
HOISINGTON, KANSAS 67544
(620) 653-7550 • (800) 542-7313
Eiler1-25Dst1

Company BlueRidge Petroleum Corporation Lease & Well No. Eiler No. 1-25
Elevation 2608 KB Formation Lansing "A" Effective Pay _____ Ft. Ticket No. RR059
Date 7-26-14 Sec. 25 Twp. 2S Range 29W County Decatur State Kansas
Test Approved By Clint Musgrove Diamond Representative Ricky Ray

Formation Test No. 1 Interval Tested from 3,598 ft. to 3,618 ft. Total Depth 3,618 ft.
Packer Depth 3,593 ft. Size 6 3/4 in. Packer Depth _____ ft. Size _____ in.
Packer Depth 3,598 ft. Size 6 3/4 in. Packer Depth _____ ft. Size _____ in.
Depth of Selective Zone Set _____ ft.

Top Recorder Depth (Inside) 3,588 ft. Recorder Number 0062 Cap. 5,000 psi.
Bottom Recorder Depth (Outside) 3,602 ft. Recorder Number 5954 Cap. 5,000 psi.
Below Straddle Recorder Depth _____ ft. Recorder Number _____ Cap. _____ psi.

Drilling Contractor Val Energy, Inc. - Rig 7 Drill Collar Length _____ ft. I.D. _____ in.
Mud Type Chemical Viscosity 48 Weight Pipe Length _____ ft. I.D. _____ in.
Weight 8.9 Water Loss 7.6 cc. Drill Pipe Length 3,575 ft. I.D. 3 1/2 in.
Chlorides 1,500 P.P.M. Test Tool Length 23 ft. Tool Size 3 1/2-IF in.
Jars: Make Sterling Serial Number Not Run Anchor Length 20 ft. Size 4 1/2-FH in.
Did Well Flow? No Reversed Out No Surface Choke Size 1 in. Bottom Choke Size 5/8 in.
Main Hole Size 7 7/8 in. Tool Joint Size 4 1/2-XH in.

Blow: 1st Open: 1/4 in. blow increasing to 2 ins. in 30 mins. No blow back during shut-in.

2nd Open: No blow increasing to 1/2 in. in 45 mins. No blow back during shut-in.

Recovered 30 ft. of heavy water cut mud = .426900 bbls. (Grind out: 30%-water; 70%-mud)

Recovered _____ ft. of _____

Recovered _____ ft. of _____

Recovered _____ ft. of _____

Recovered _____ ft. of _____

Recovered _____ ft. of _____

Remarks Tool Sample Grind Out: 3%-oil; 62%-water; 35%-mud (Chlorides: 25,000 Ppm PH: 7.0 RW: .20 @ 95°)

Time Set Packer(s) 10:18 A.M. Time Started off Bottom 1:18 P.M. Maximum Temperature 119°

Initial Hydrostatic Pressure.....(A) 1697 P.S.I.

Initial Flow Period.....Minutes 30 (B) 12 P.S.I. to (C) 18 P.S.I.

Initial Closed In Period.....Minutes 45 (D) 1187 P.S.I.

Final Flow Period.....Minutes 45 (E) 21 P.S.I. to (F) 30 P.S.I.

Final Closed In Period.....Minutes 60 (G) 1159 P.S.I.

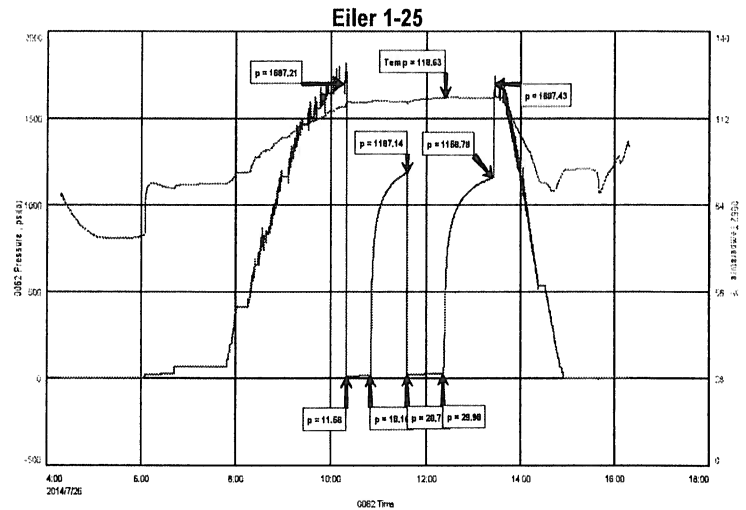
Final Hydrostatic Pressure.....(H) 1697 P.S.I.

Diamond Testing LLC**P.O. Box 157****Hoisington KS 67544**
Ricky Ray - Tester
(620) 617-7261
Wellsite Report**General Information**

Company Name	Blue Ridge Petroleum Corp.
Contact	Jonathan Allen
Well Operator	Blue Ridge Petroleum Corp.
Well Name	Eiler 1-25
Surface Location	Sec: 25-2s-29w (Decatur
Field	County) Wildcat
Well Type	Vertical
Pool	Wildcat
Test Purpose (AEUB)	Initial Test
Qualified By	Clint Musgrove
Gauge Name	0062

Test Information

Job Number	RR059
Test Type	Drill Stem Test
Well Fluid Type	01 Oil
Formation	Dst 1 Lan "A" (3598-3618)
Start Test Date	2014/07/26
Start Test Time	04:15:00
Final Test Date	2014/12/26
Final Test Time	16:18:00

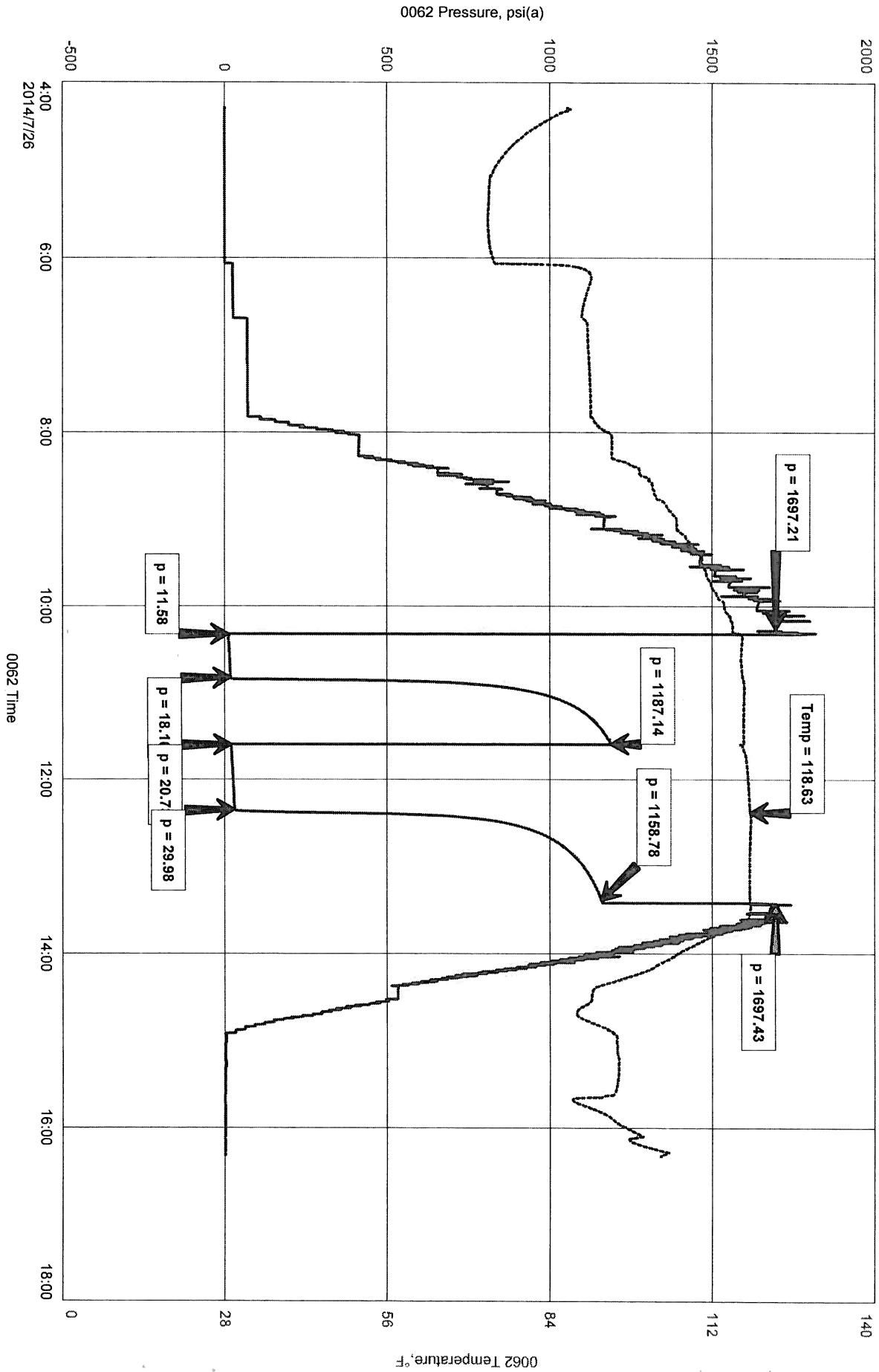
**Test Results****Recovery:**

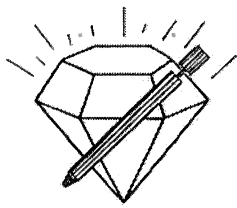
30'	HWCM	30% M	70% M
-----	------	-------	-------

Tool Sample:	3% O	62% W	35% M
--------------	------	-------	-------

RW .2 @ 95 Deg
 PH. 7
 Chlorides: 25,000

Eiler-1-25





DIAMOND TESTING, LLC
P.O. Box 157
HOISINGTON, KANSAS 67544
(620) 653-7550 • (800) 542-7313
Eiler1-25Dst2

Company BlueRidge Petroleum Corporation Lease & Well No. Eiler No. 1-25
Elevation 2608 KB Formation Lansing "B & C" Effective Pay _____ Ft. Ticket No. RR060
Date 7-27-14 Sec. 25 Twp. 2S Range 29W County Decatur State Kansas
Test Approved By Clint Musgrove Diamond Representative Ricky Ray

Formation Test No. 2 Interval Tested from 3,622 ft. to 3,660 ft. Total Depth 3,660 ft.
Packer Depth 3,617 ft. Size 6 3/4 in. Packer Depth _____ ft. Size _____ in.
Packer Depth 3,622 ft. Size 6 3/4 in. Packer Depth _____ ft. Size _____ in.
Depth of Selective Zone Set _____ ft.

Top Recorder Depth (Inside) 3,612 ft. Recorder Number 0062 Cap. 5,000 psi.
Bottom Recorder Depth (Outside) 3,626 ft. Recorder Number 5954 Cap. 5,000 psi.
Below Straddle Recorder Depth _____ ft. Recorder Number _____ Cap. _____ psi.

Drilling Contractor Val Energy, Inc. - Rig 7 Drill Collar Length _____ ft. I.D. _____ in.
Mud Type Chemical Viscosity 48 Weight Pipe Length _____ ft. I.D. _____ in.
Weight 8.9 Water Loss 7.6 cc. Drill Pipe Length 3,599 ft. I.D. 3 1/2 in.
Chlorides 1,500 P.P.M. Test Tool Length 23 ft. Tool Size 3 1/2-IF in.
Jars: Make Sterling Serial Number Not Run Anchor Length 38 ft. Size 4 1/2-FH in.
Did Well Flow? No Reversed Out No Surface Choke Size 1 in. Bottom Choke Size 5/8 in.
Main Hole Size 7 7/8 in. Tool Joint Size 4 1/2-XH in.

Blow: 1st Open: 1 in. blow increasing. Off bottom of bucket in 10 mins. No blow back during shut-in.
2nd Open: 1/4 in. blow increasing. Off bottom of bucket in 13 1/4 mins. No blow back during shut-in.

Recovered 0.5 ft. of oil = .007115 bbls. (Grind out: 100%-oil)
Recovered 30 ft. of slightly oil & heavy mud cut water = .426900 bbls. (Grind out: 1%-oil; 64%-water; 35%-mud)
Recovered 620 ft. of slightly oil & mud cut water = 8.822600 bbls. (Grind out: 1%-oil; 92%-water; 7%-mud) Chlorides: 55,000 Ppm PH: 7.0 RW: .14 @ 78°
Recovered 650.5 ft. of TOTAL FLUID = 9.256615 bbls.
Recovered _____ ft. of _____
Recovered _____ ft. of _____
Remarks Tool Sample Grind Out: 4%-oil; 85%-mud; 11%-mud

Time Set Packer(s) 5:20 A.M. Time Started off Bottom 8:20 A.M. Maximum Temperature 124°
Initial Hydrostatic Pressure.....(A) 1704 P.S.I.
Initial Flow Period.....Minutes 30 (B) 16 P.S.I. to (C) 142 P.S.I.
Initial Closed In Period.....Minutes 45 (D) 1258 P.S.I.
Final Flow Period.....Minutes 45 (E) 155 P.S.I. to (F) 321 P.S.I.
Final Closed In Period.....Minutes 60 (G) 1250 P.S.I.
Final Hydrostatic Pressure.....(H) 1706 P.S.I.

Diamond Testing LLC

P.O. Box 157

Hoisington KS 67544

Ricky Ray - Tester

(620) 617-7261



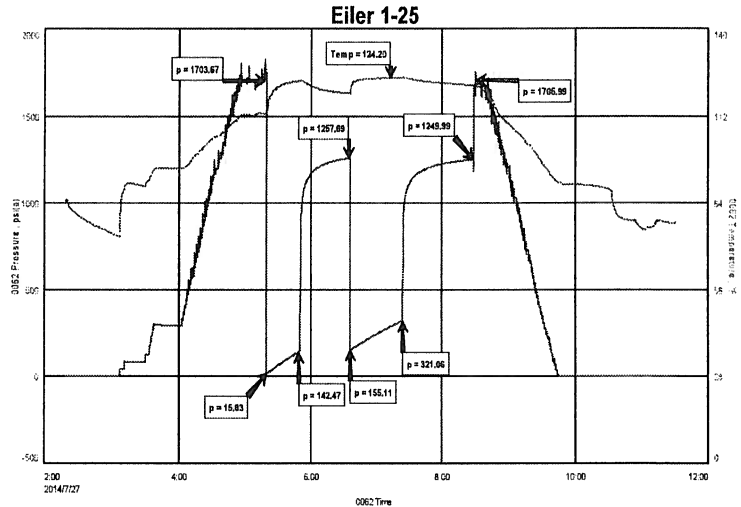
Wellsite Report

General Information

Company Name	Blue Ridge Petroleum Corp
Contact	Jonathan Allen
Well Operator	Blue Ridge Petroleum Corp
Well Name	Eiler 1-25
Surface Location	Sec: 25-2s-29w (Decatur County)
Field	Wildcat
Well Type	Vertical
Pool	Wildcat
Test Purpose (AEUB)	Initial Test
Qualified By	Clint Musgrove
Gauge Name	0062

Test Information

Job Number	RR060
Test Type	Drill Stem Test
Well Fluid Type	01 Oil
Formation	Dst 2 Lan "B-C" (3622-3660)
Start Test Date	2014/07/27
Start Test Time	02:19:00
Final Test Date	2014/07/27
Final Test Time	11:03:00



Test Results

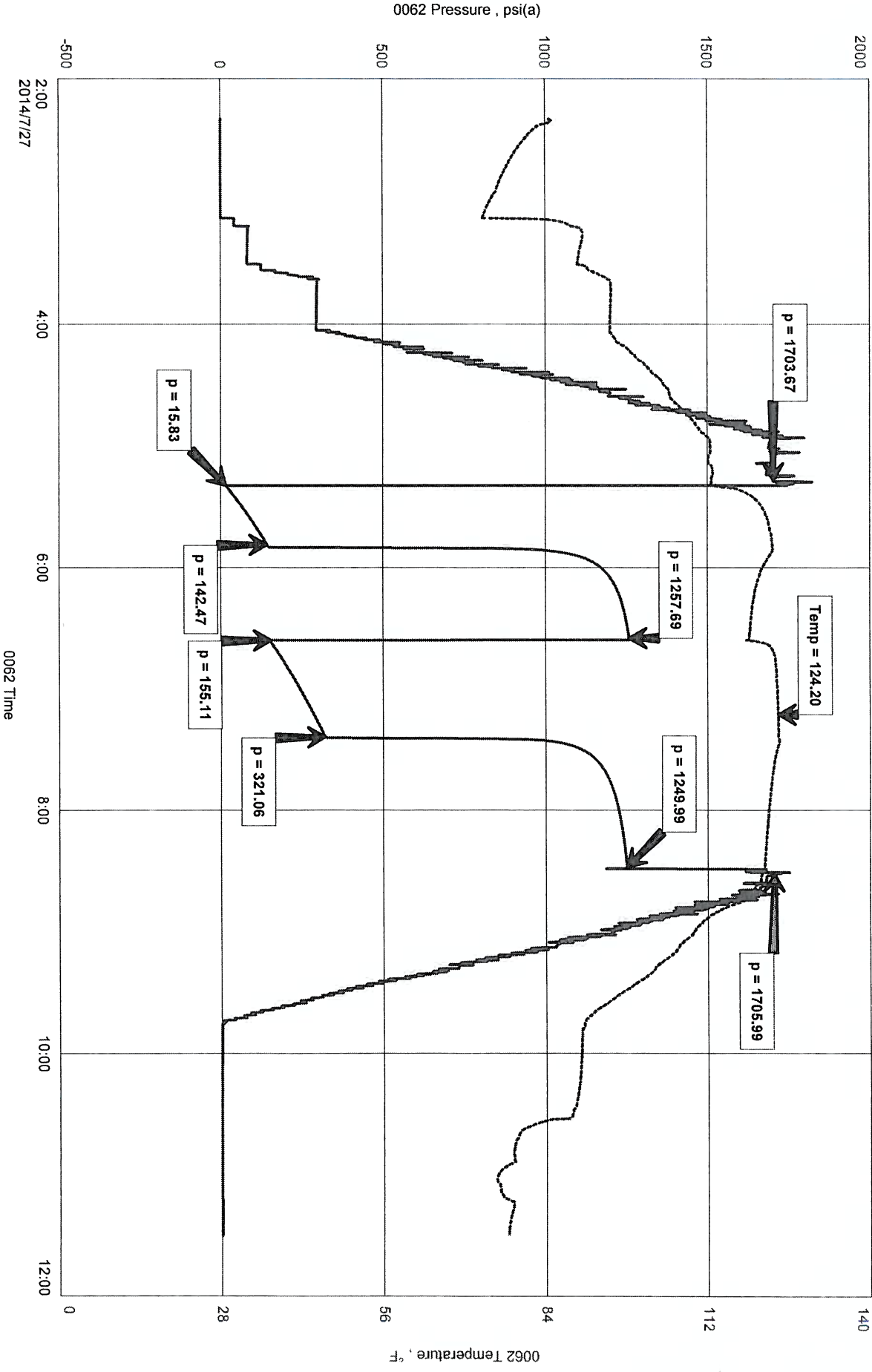
Recovery:

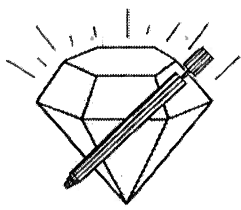
1/2'	O	100% O		
30'	SLO&HMCW	1% O	64% W	35% M
620'	SLO&MCW	1% O	92% W	7% M
650.5	Total Fluid			

Tool Sample: 4% O 85% W 11% M

RW: .14 @ 78 Deg
 PH: 7
 Chlorides: 55,000 PPM

Eiler 1-25





DIAMOND TESTING, LLC
 P.O. Box 157
HOISINGTON, KANSAS 67544
 (620) 653-7550 • (800) 542-7313
 Eiler1-25Dst3

Company BlueRidge Petroleum Corporation Lease & Well No. Eiler No. 1-25
 Elevation 2608 KB Formation Lansing "F & G" Effective Pay Ft. Ticket No. RR061
 Date 7-28-14 Sec. 25 Twp. 2S Range 29W County Decatur State Kansas
 Test Approved By Clint Musgrove Diamond Representative Ricky Ray

Formation Test No. 3 Interval Tested from 3,660 ft. to 3,700 ft. Total Depth 3,700 ft.
 Packer Depth 3,655 ft. Size 6 3/4 in. Packer Depth ft. Size in.
 Packer Depth 3,660 ft. Size 6 3/4 in. Packer Depth ft. Size in.
 Depth of Selective Zone Set ft.

Top Recorder Depth (Inside) 3,650 ft. Recorder Number 0062 Cap. 5,000 psi.
 Bottom Recorder Depth (Outside) 3,664 ft. Recorder Number 5954 Cap. 5,000 psi.
 Below Straddle Recorder Depth ft. Recorder Number Cap. psi.

Drilling Contractor Val Energy, Inc. - Rig 7 Drill Collar Length ft I.D. in.
 Mud Type Chemical Viscosity 46 Weight Pipe Length ft I.D. in.
 Weight 9.1 Water Loss 7.2 cc. Drill Pipe Length 3,637 ft I.D. 3 1/2 in.
 Chlorides 2,200 P.P.M. Test Tool Length 23 ft Tool Size 3 1/2-IF in.
 Jars: Make Sterling Serial Number Not Run Anchor Length 40 ft. Size 4 1/2-FH in.
 Did Well Flow? No Reversed Out No Surface Choke Size 1 in. Bottom Choke Size 5/8 in.
 Main Hole Size 7 7/8 in. Tool Joint Size 4 1/2-XH in.

Blow: 1st Open: 1/4 in. blow increasing. to 2 1/4 ins. in 30 mins. No blow back during shut-in.

2nd Open: No blow. No blow back during shut-in.

Recovered 30 ft. of mud = .426900 bbls. (Grind out: 100%-mud)
 Recovered ft. of
 Recovered ft. of
 Recovered ft. of
 Recovered ft. of
 Recovered ft. of
 Remarks Tool Sample Grind Out: 1%-oil; 99%-mud

Time Set Packer(s) 4:36 A.M. Time Started off Bottom 7:36 A.M. Maximum Temperature 116°
 Initial Hydrostatic Pressure.....(A) 1758 P.S.I.
 Initial Flow Period.....Minutes 30 (B) 10 P.S.I. to (C) 20 P.S.I.
 Initial Closed In Period.....Minutes 45 (D) 630 P.S.I.
 Final Flow Period.....Minutes 45 (E) 21 P.S.I. to (F) 24 P.S.I.
 Final Closed In Period.....Minutes 60 (G) 431 P.S.I.
 Final Hydrostatic Pressure.....(H) 1671 P.S.I.

Diamond Testing LLC

P.O. Box 157

Hoisington KS 67544

Ricky Ray - Tester

(620) 617-7261



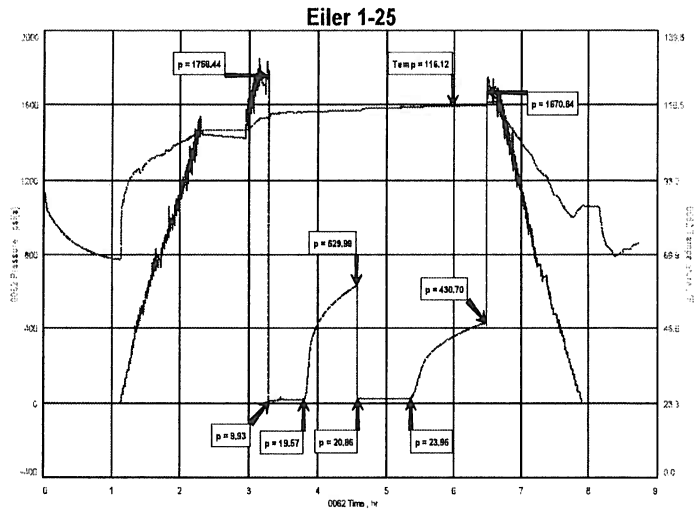
Wellsite Report

General Information

Company Name	Blue Ridge Petroleum Corp.
Contact	Jonathan Allen
Well Operator	Blue Ridge Petroleum Corp
Well Name	Eiler 1-25
Surface Location	Sec: 25-2s-29w (Decatur County)
Field	Wildcat
Well Type	Vertical
Pool	Wildcat
Test Purpose (AEUB)	Initial Test
Qualified By	Clint Musgrove
Gauge Name	0062

Test Information

Job Number	RR061
Test Type	Drill Stem Test
Well Fluid Type	01 Oil
Formation	Dst 3 Lan "F-G" (3660-3700)
Start Test Date	2014/07/28
Start Test Time	01:18:00
Final Test Date	2014/07/28
Final Test Time	10:02:00



Test Results

Recovery;

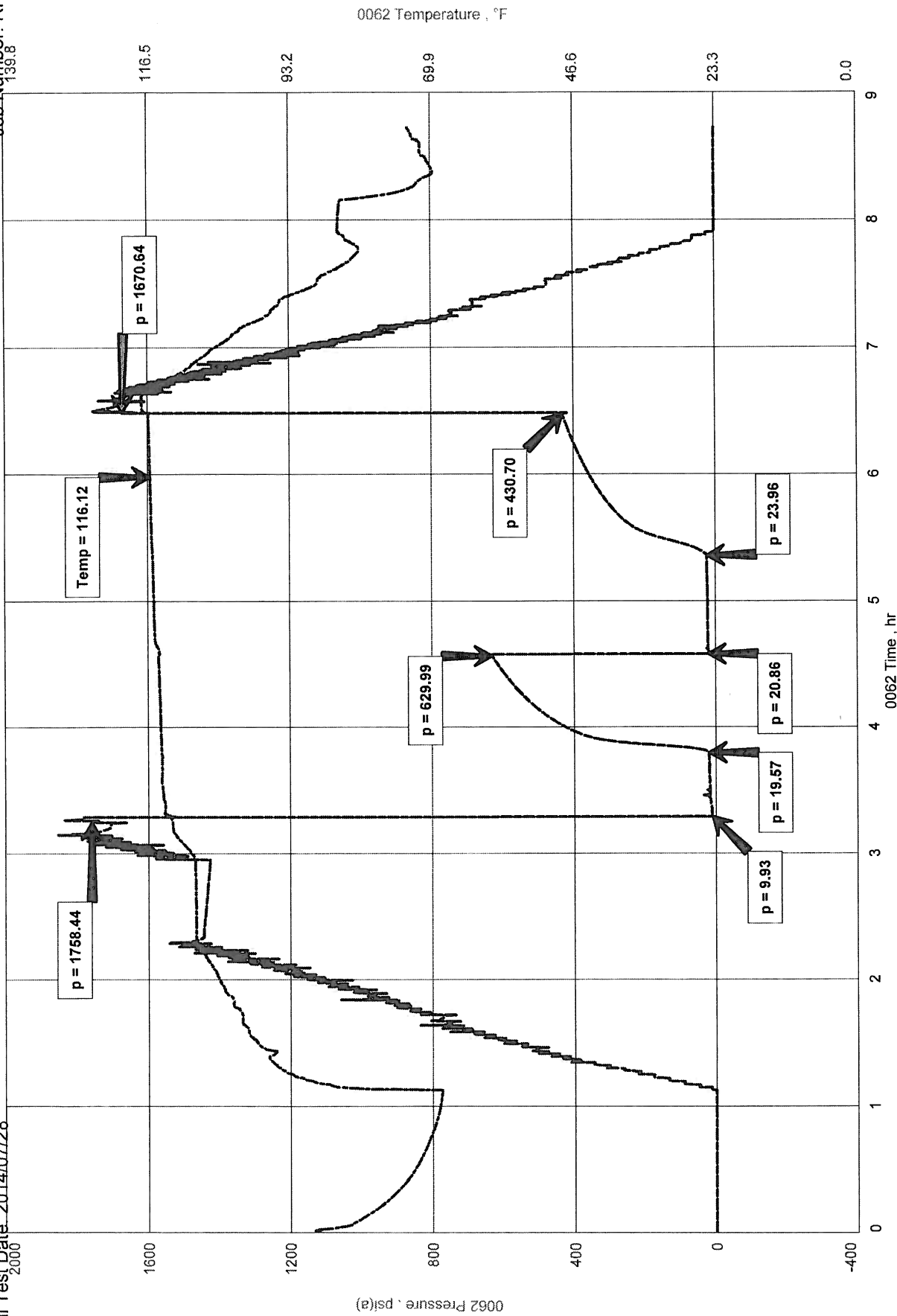
'30 M 100% M

Tool Sample: 1% O 99% M

Blue Ridge Petroleum Corp.
 Dst 3 Lan "F-G" (3660-3700)
 Start Test Date: 2014/07/28
 Final Test Date: 2014/07/28

Eiler 1-25

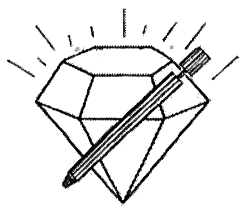
Formation: Dst 3 Lan "F-G" (3660-3700)
 Pool: Wildcat
 Job Number: RR061
 139.8



0062 Temperature, °F

0062 Pressure, psia

0062 Time, hr



DIAMOND TESTING, LLC
P.O. Box 157
HOISINGTON, KANSAS 67544
(620) 653-7550 • (800) 542-7313
Eiler1-25Dst4

Company BlueRidge Petroleum Corporation Lease & Well No. Eiler No. 1-25
Elevation 2608 KB Formation Lansing "I & J" Effective Pay Ft. Ticket No. RR062
Date 7-29-14 Sec. 25 Twp. 2S Range 29W County Decatur State Kansas
Test Approved By Clint Musgrove Diamond Representative Ricky Ray

Formation Test No. 4 Interval Tested from 3,745 ft. to 3,800 ft. Total Depth 3,800 ft.
Packer Depth 3,740 ft. Size 6 3/4 in. Packer Depth ft. Size in.
Packer Depth 3,745 ft. Size 6 3/4 in. Packer Depth ft. Size in.
Depth of Selective Zone Set ft.

Top Recorder Depth (Inside) 3,735 ft. Recorder Number 0062 Cap. 5,000 psi.
Bottom Recorder Depth (Outside) 3,787 ft. Recorder Number 5954 Cap. 5,000 psi.
Below Straddle Recorder Depth ft. Recorder Number Cap. psi.

Drilling Contractor Val Energy, Inc. - Rig 7 Drill Collar Length ft I.D. in.
Mud Type Chemical Viscosity 46 Weight Pipe Length ft I.D. in.
Weight 9.1 Water Loss 7.2 cc. Drill Pipe Length 3,722 ft I.D. 3 1/2 in.
Chlorides 2,200 P.P.M. Test Tool Length 23 ft Tool Size 3 1/2-IF in.
Jars: Make Sterling Serial Number Not Run Anchor Length 18' perf. w/ 37' drill pipe Size 4 1/2-FH in.
Did Well Flow? No Reversed Out No Surface Choke Size 1 in. Bottom Choke Size 5/8 in.
Main Hole Size 7 7/8 in. Tool Joint Size 4 1/2-XH in.

Blow: 1st Open: Weak, surface blow increasing to 1/2 in. in 30 mins. No blow back during shut-in.

2nd Open: No blow. No blow back during shut-in.

Recovered 3 ft. of mud = .042690 bbls. (Grind out: 100%-mud)

Recovered ft. of

Recovered ft. of

Recovered ft. of

Recovered ft. of

Recovered ft. of

Remarks Tool Sample Grind Out: 100%-mud

Time Set Packer(s) 1:21 A.M. Time Started off Bottom 3:36 A.M. Maximum Temperature 118°
Initial Hydrostatic Pressure.....(A) 1833 P.S.I.
Initial Flow Period.....Minutes 30 (B) 9 P.S.I. to (C) 16 P.S.I.
Initial Closed In Period.....Minutes 30 (D) 691 P.S.I.
Final Flow Period.....Minutes 30 (E) 11 P.S.I. to (F) 16 P.S.I.
Final Closed In Period.....Minutes 45 (G) 859 P.S.I.
Final Hydrostatic Pressure.....(H) 1822 P.S.I.

Diamond Testing LLC

P.O. Box 157

Hoisington KS 67544

Ricky Ray - Tester

(620) 617-7261



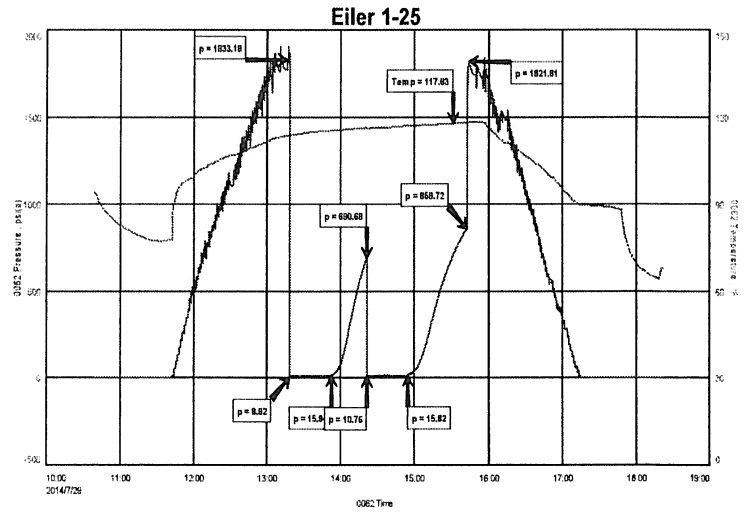
Wellsite Report

General Information

Company Name	Blue Ridge Petroleum Corp
Contact	Jonathan Allen
Well Operator	Blue Ridge Petroleum Corp
Well Name	Eiler 1-25
Surface Location	Sec: 25-2s-29w (Decatur County)
Field	Wildcat
Well Type	Vertical
Pool	Wildcat
Test Purpose (AEUB)	Initial Test
Qualified By	Clint Musgrove
Gauge Name	0062

Test Information

Job Number	RR062
Test Type	Drill Stem Test
Well Fluid Type	01 Oil
Formation	Dst 4 Lan "I-J" (3745-3800)
Start Test Date	2014/07/28
Start Test Time	10:39:00
Final Test Date	2014/07/29
Final Test Time	06:22:00



Test Results

Recovery:

3' M 100% M

Tool Sample: 100% M

Blue Ridge Petroleum Corp
Dst 4 Lan "I-J" (3745-3800)
Start Test Date: 2014/07/28
Final Test Date: 2014/07/29

Eiler 1-25
Formation: Dst 4 Lan "I-J" (3745-3800)
Pool: Wildcat
Job Number: RR062

Eiler 1-25

