



**TRILOBITE
TESTING, INC**

DRILL STEM TEST REPORT

Berexco LLC.

10-14-17, Ellis, KS

2020 N. Bramblewood
Wichita KS 67206

Goetz #B3

Job Ticket: 58972

DST#: 4

ATTN: Steve Reed

Test Start: 2014.06.10 @ 18:40:00

GENERAL INFORMATION:

Formation: **Arbuckle**

Deviated: No Whipstock: ft (KB)

Time Tool Opened: 20:57:15

Time Test Ended: 02:35:30

Test Type: Conventional Bottom Hole (Reset)

Tester: Brett Dickinson

Unit No: 59

Interval: 3500.00 ft (KB) To 3537.00 ft (KB) (TVD)

Reference Elevations: 2007.00 ft (KB)

Total Depth: 3537.00 ft (KB) (TVD)

2000.00 ft (CF)

Hole Diameter: 7.88 inches Hole Condition: Fair

KB to GR/CF: 7.00 ft

Serial #: 8957 Outside

Press@RunDepth: 33.27 psig @ 3534.00 ft (KB)

Capacity: 8000.00 psig

Start Date: 2014.06.10

End Date:

2014.06.11

Last Calib.: 2014.06.11

Start Time: 18:40:05

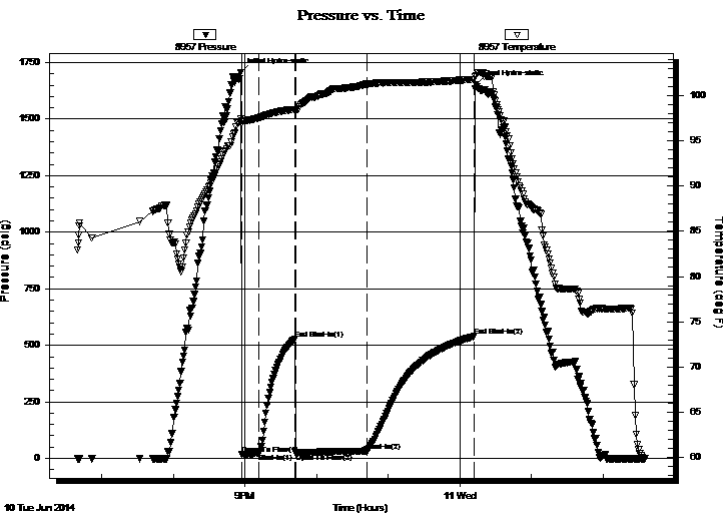
End Time:

02:35:29

Time On Btm: 2014.06.10 @ 20:56:45

Time Off Btm: 2014.06.11 @ 00:13:45

TEST COMMENT: IF-2in blow
IS-No blow
FF-weak surface blow
FS-No blow



PRESSURE SUMMARY

Time (Min.)	Pressure (psig)	Temp (deg F)	Annotation
0	1706.40	97.43	Initial Hydro-static
1	17.50	96.84	Open To Flow (1)
16	22.53	97.51	Shut-In(1)
46	528.74	98.46	End Shut-In(1)
46	24.93	98.25	Open To Flow (2)
106	33.27	101.23	Shut-In(2)
196	539.80	101.75	End Shut-In(2)
197	1653.98	102.17	Final Hydro-static

Recovery

Length (ft)	Description	Volume (bbl)
23.00	VSOCM 5%O 95%M	0.32
2.00	Free Oil	0.03

* Recovery from multiple tests

Gas Rates

	Choke (inches)	Pressure (psig)	Gas Rate (Mcf/d)



**TRILOBITE
TESTING, INC**

DRILL STEM TEST REPORT

FLUID SUMMARY

Berexco LLC.

10-14-17, Ellis, KS

2020 N. Bramblewood
Wichita KS 67206

Goetz #B3

Job Ticket: 58972

DST#: 4

ATTN: Steve Reed

Test Start: 2014.06.10 @ 18:40:00

Mud and Cushion Information

Mud Type: Gel Chem

Cushion Type:

Oil API:

deg API

Mud Weight: 9.00 lb/gal

Cushion Length:

ft

Water Salinity:

ppm

Viscosity: 54.00 sec/qt

Cushion Volume:

bbbl

Water Loss: 23.96 in³

Gas Cushion Type:

Resistivity: ohm.m

Gas Cushion Pressure:

psig

Salinity: 20000.00 ppm

Filter Cake: inches

Recovery Information

Recovery Table

Length ft	Description	Volume bbl
23.00	VSOCM 5%O 95%M	0.323
2.00	Free Oil	0.028

Total Length: 25.00 ft Total Volume: 0.351 bbl

Num Fluid Samples: 0

Num Gas Bombs: 0

Serial #:

Laboratory Name:

Laboratory Location:

Recovery Comments:

