



DRILL STEM TEST REPORT

Prepared For: **American Warrior, Inc.**

PO Box 399
Garden City, KS 67846

ATTN: Kurt Talbott

Hoffmaster #3-23

23-22s-14w Stafford,Ks.

Start Date: 2014.06.11 @ 16:29:14

End Date: 2014.06.12 @ 04:21:44

Job Ticket #: 54180 DST #: 1

Trilobite Testing, Inc

PO Box 362 Hays, KS 67601

ph: 785-625-4778 fax: 785-625-5620

Printed: 2014.06.16 @ 13:17:40



**TRILOBITE
TESTING, INC**

DRILL STEM TEST REPORT

American Warrior, Inc.

23-22s-14w Stafford, Ks.

PO Box 399
Garden City, KS 67846

Hoffmaster #3-23

Job Ticket: 54180 **DST#: 1**

ATTN: Kurt Talbott

Test Start: 2014.06.11 @ 16:29:14

GENERAL INFORMATION:

Formation: **LKC "H & I"**
 Deviated: No Whipstock: ft (KB)
 Time Tool Opened: 19:24:14
 Time Test Ended: 04:21:44
 Interval: **3576.00 ft (KB) To 3625.00 ft (KB) (TVD)**
 Total Depth: 3625.00 ft (KB) (TVD)
 Hole Diameter: 7.88 inches Hole Condition: Fair
 Test Type: Conventional Bottom Hole (Initial)
 Tester: Matt Smith
 Unit No: 53
 Reference Elevations: 1938.00 ft (KB)
 1930.00 ft (CF)
 KB to GR/CF: 8.00 ft

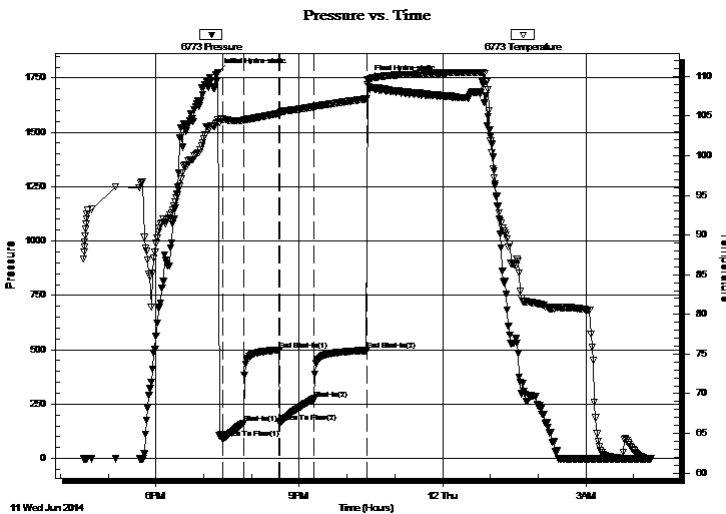
Serial #: 6773

Outside

Press@RunDepth: 274.29 psig @ 3577.00 ft (KB) Capacity: 8000.00 psig
 Start Date: 2014.06.11 End Date: 2014.06.12 Last Calib.: 2014.06.12
 Start Time: 16:29:19 End Time: 04:21:44 Time On Btm: 2014.06.11 @ 19:18:14
 Time Off Btm: 2014.06.11 @ 22:25:44

TEST COMMENT: IF: Strong blow . B.O.B. in 2 1/2 mins.
 IS: Weak blow . Surf., - 2 1/4". Bled off in 5 mins.
 FF: Strong blow . B.O.B. in 4 mins.
 FS: Fair blow . Surf., - 8". Bled off in 10 mins.

PRESSURE SUMMARY



Time (Min.)	Pressure (psig)	Temp (deg F)	Annotation
0	1775.72	104.56	Initial Hydro-static
6	90.55	104.59	Open To Flow (1)
32	163.55	104.44	Shut-In(1)
77	499.33	105.33	End Shut-In(1)
77	164.46	105.33	Open To Flow (2)
121	274.29	106.16	Shut-In(2)
187	496.83	107.16	End Shut-In(2)
188	1741.01	109.00	Final Hydro-static

Recovery

Length (ft)	Description	Volume (bbl)
124.00	OCMW 2%o 3%m 95%w	1.74
124.00	OCMW 5%o 5%m 90%w	1.74
62.00	GMCOW 2%g 3%m 20%o 75%w	0.87
124.00	GMCOW 10%m 15%o 35%w 40%g	1.74
124.00	GOWCM 12%m 14%w 31%o 43%g	1.74
5.00	GOWCM 10%w 20%g 20%o 50%m	0.07

Gas Rates

Choke (inches)	Pressure (psig)	Gas Rate (Mcf/d)



**TRILOBITE
TESTING, INC**

DRILL STEM TEST REPORT

TOOL DIAGRAM

American Warrior, Inc.

23-22s-14w Stafford, Ks.

PO Box 399
Garden City, KS 67846

Hoffmaster #3-23

Job Ticket: 54180

DST#: 1

ATTN: Kurt Talbott

Test Start: 2014.06.11 @ 16:29:14

Tool Information

Drill Pipe:	Length: 3572.00 ft	Diameter: 3.80 inches	Volume: 50.11 bbl	Tool Weight: 2400.00 lb
Heavy Wt. Pipe:	Length: 0.00 ft	Diameter: 0.00 inches	Volume: 0.00 bbl	Weight set on Packer: 22000.00 lb
Drill Collar:	Length: 0.00 ft	Diameter: 2.25 inches	Volume: 0.00 bbl	Weight to Pull Loose: 56000.00 lb
			<u>Total Volume: 50.11 bbl</u>	Tool Chased 0.00 ft
Drill Pipe Above KB:	16.00 ft			String Weight: Initial 38000.00 lb
Depth to Top Packer:	3576.00 ft			Final 40000.00 lb
Depth to Bottom Packer:	ft			
Interval between Packers:	49.00 ft			
Tool Length:	69.00 ft			
Number of Packers:	2	Diameter: 6.75 inches		

Tool Comments:

Tool Description

Tool Description	Length (ft)	Serial No.	Position	Depth (ft)	Accum. Lengths
Change Over Sub	1.00			3557.00	
Shut In Tool	5.00			3562.00	
Hydraulic tool	5.00			3567.00	
Packer	4.00			3571.00	20.00 Bottom Of Top Packer
Packer	5.00			3576.00	
Stubb	1.00			3577.00	
Recorder	0.00	6719	Outside	3577.00	
Recorder	0.00	6773	Outside	3577.00	
Perforations	2.00			3579.00	
Change Over Sub	1.00			3580.00	
Drill Pipe	31.00			3611.00	
Change Over Sub	1.00			3612.00	
Perforations	10.00			3622.00	
Bullnose	3.00			3625.00	49.00 Bottom Packers & Anchor

Total Tool Length: 69.00



**TRILOBITE
TESTING, INC**

DRILL STEM TEST REPORT

FLUID SUMMARY

American Warrior, Inc.

23-22s-14w Stafford, Ks.

PO Box 399
Garden City, KS 67846

Hoffmaster #3-23

Job Ticket: 54180

DST#: 1

ATTN: Kurt Talbott

Test Start: 2014.06.11 @ 16:29:14

Mud and Cushion Information

Mud Type: Gel Chem

Cushion Type:

Oil API:

deg API

Mud Weight: 9.00 lb/gal

Cushion Length:

ft

Water Salinity:

52500 ppm

Viscosity: 57.00 sec/qt

Cushion Volume:

bbbl

Water Loss: 8.77 in³

Gas Cushion Type:

Resistivity: 0.00 ohm.m

Gas Cushion Pressure:

psig

Salinity: 6600.00 ppm

Filter Cake: 0.20 inches

Recovery Information

Recovery Table

Length ft	Description	Volume bbbl
124.00	OCMW 2%o 3%m 95%w	1.739
124.00	OCMW 5%o 5%m 90%w	1.739
62.00	GMCOW 2%g 3%m 20%o 75%w	0.870
124.00	GMCOW 10%m 15%o 35%w 40%g	1.739
124.00	GOWCM 12%m 14%w 31%o 43%g	1.739
5.00	GOWCM 10%w 20%g 20%o 50%m	0.070
0.00	1049' G.I.P. 100%g	0.000

Total Length: 563.00 ft Total Volume: 7.896 bbl

Num Fluid Samples: 0

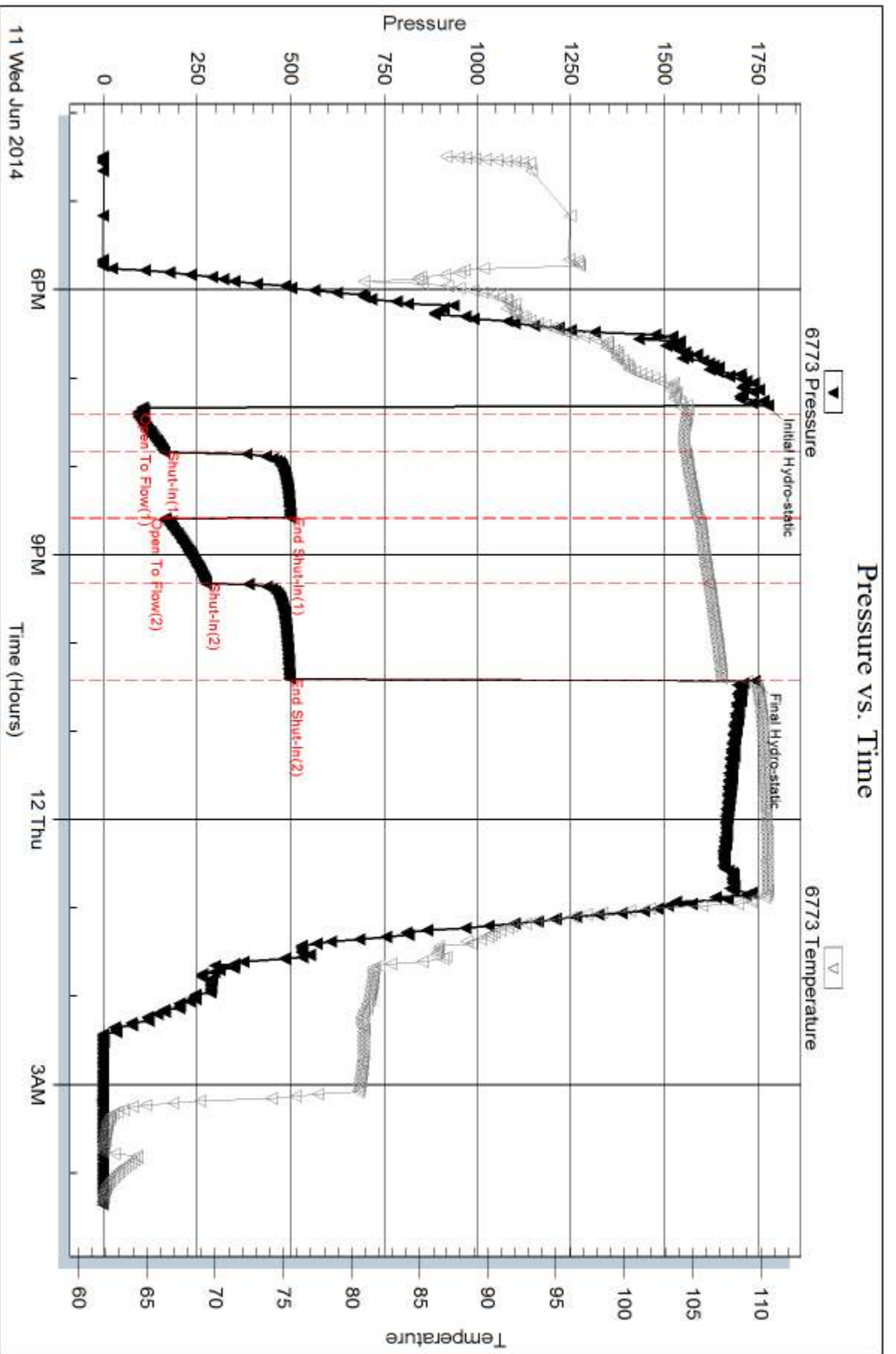
Num Gas Bombs: 0

Serial #: none

Laboratory Name:

Laboratory Location:

Recovery Comments: RW .16 @ 63 degrees = 52,500 chorides

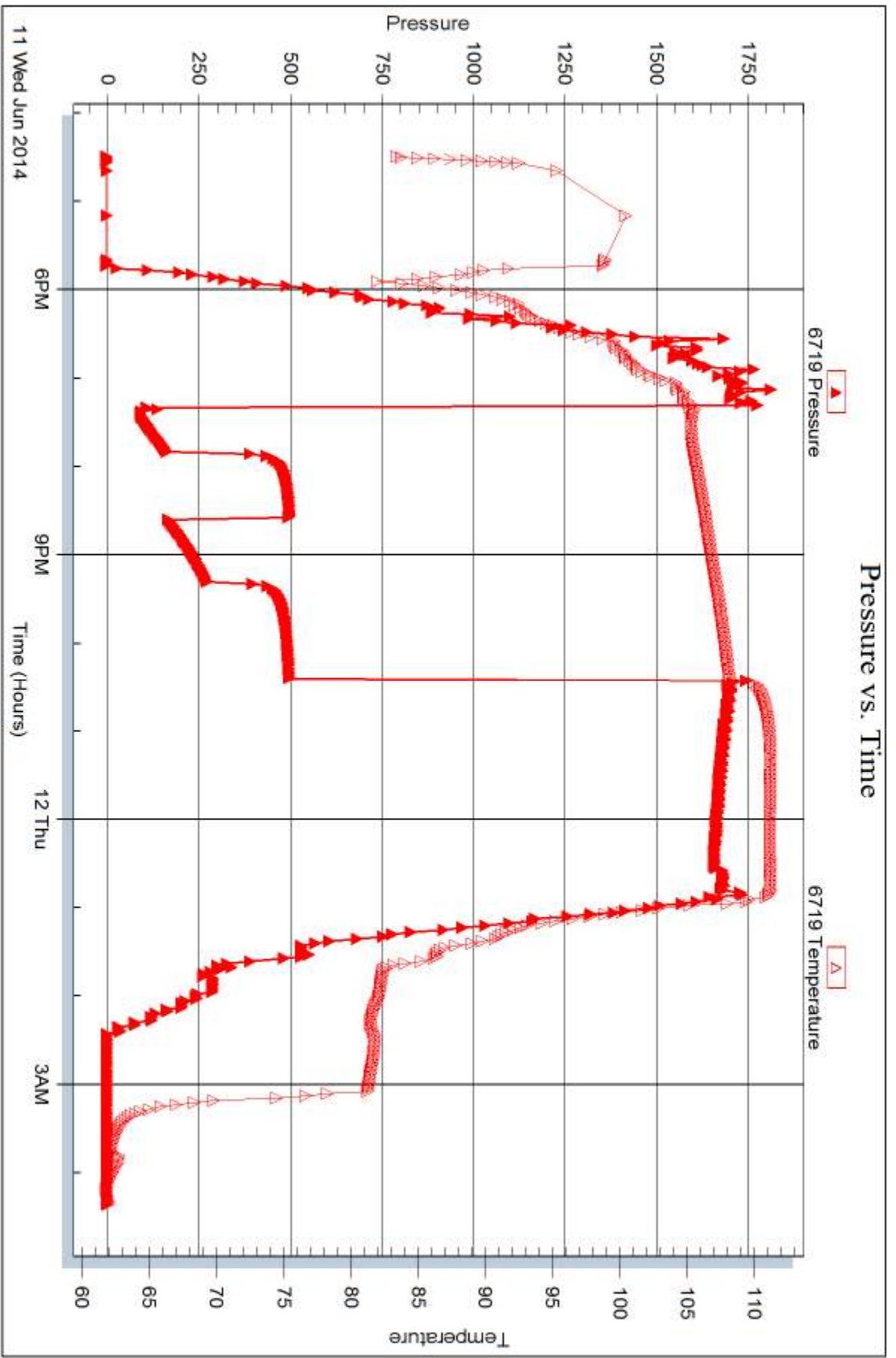


Serial #: 6719

Outside American Warrior, Inc.

Hofmaster #3-23

DST Test Number: 1



Triobite Testing, Inc

Ref. No: 54180

Printed: 2014.06.16 @ 13:17:41



DRILL STEM TEST REPORT

Prepared For: **American Warrior, Inc.**

PO Box 399
Garden City, KS 67846

ATTN: Kurt Talbott

Hoffmaster #3-23

23-22s-14w Stafford, Ks.

Start Date: 2014.06.12 @ 17:15:52

End Date: 2014.06.12 @ 23:14:52

Job Ticket #: 54181 DST #: 2

Trilobite Testing, Inc
PO Box 362 Hays, KS 67601
ph: 785-625-4778 fax: 785-625-5620

Printed: 2014.06.16 @ 13:17:18

American Warrior, Inc. 23-22s-14w Stafford, Ks. Hoffmaster #3-23 DST # 2 Viola 2014.06.12



**TRILOBITE
TESTING, INC**

DRILL STEM TEST REPORT

American Warrior, Inc.

23-22s-14w Stafford, Ks.

PO Box 399
Garden City, KS 67846

Hoffmaster #3-23

Job Ticket: 54181

DST#: 2

ATTN: Kurt Talbott

Test Start: 2014.06.12 @ 17:15:52

GENERAL INFORMATION:

Formation: **Viola**

Deviated: No Whipstock: ft (KB)

Time Tool Opened: 19:22:22

Time Test Ended: 23:14:52

Test Type: Conventional Bottom Hole (Reset)

Tester: Matt Smith

Unit No: 53

Interval: 3757.00 ft (KB) To 3785.00 ft (KB) (TVD)

Reference Elevations: 1938.00 ft (KB)

Total Depth: 3785.00 ft (KB) (TVD)

1930.00 ft (CF)

Hole Diameter: 7.88 inches Hole Condition: Fair

KB to GR/CF: 8.00 ft

Serial #: 6773 Outside

Press@RunDepth: 66.25 psig @ 3758.00 ft (KB)

Capacity: 8000.00 psig

Start Date: 2014.06.12

End Date:

2014.06.12

Last Calib.:

2014.06.12

Start Time:

17:15:57

End Time:

23:14:51

Time On Btm:

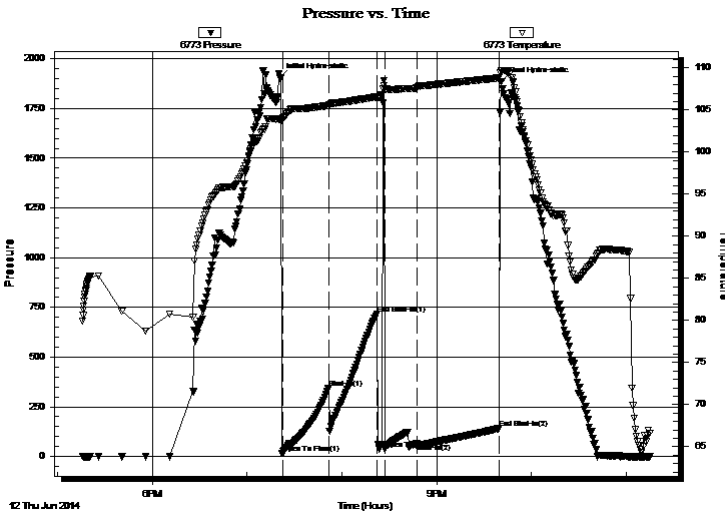
2014.06.12 @ 19:20:37

Time Off Btm:

2014.06.12 @ 21:40:52

TEST COMMENT: IF: Weak blow . Surf., - 1/4".
IS: No blow .
FF: No blow . Flushed. No blow .
FS: No blow .

PRESSURE SUMMARY



Time (Min.)	Pressure (psig)	Temp (deg F)	Annotation
0	1904.06	103.92	Initial Hydro-static
2	17.50	103.86	Open To Flow (1)
31	345.36	105.54	Shut-In(1)
62	718.49	106.57	End Shut-In(1)
67	35.09	107.51	Open To Flow (2)
87	66.25	107.60	Shut-In(2)
139	141.79	108.81	End Shut-In(2)
141	1884.99	109.71	Final Hydro-static

Recovery

Length (ft)	Description	Volume (bbl)
10.00	DRLG Mud 100%m	0.14

* Recovery from multiple tests

Gas Rates

	Choke (inches)	Pressure (psig)	Gas Rate (Mcf/d)



**TRILOBITE
TESTING, INC**

DRILL STEM TEST REPORT

TOOL DIAGRAM

American Warrior, Inc.

23-22s-14w Stafford, Ks.

PO Box 399
Garden City, KS 67846

Hoffmaster #3-23

Job Ticket: 54181

DST#: 2

ATTN: Kurt Talbott

Test Start: 2014.06.12 @ 17:15:52

Tool Information

Drill Pipe:	Length: 3760.00 ft	Diameter: 3.80 inches	Volume: 52.74 bbl	Tool Weight:	2400.00 lb
Heavy Wt. Pipe:	Length: 0.00 ft	Diameter: 0.00 inches	Volume: 0.00 bbl	Weight set on Packer:	24000.00 lb
Drill Collar:	Length: 0.00 ft	Diameter: 2.25 inches	Volume: 0.00 bbl	Weight to Pull Loose:	42000.00 lb
			<u>Total Volume: 52.74 bbl</u>	Tool Chased	0.00 ft
Drill Pipe Above KB:	23.00 ft			String Weight: Initial	42000.00 lb
Depth to Top Packer:	3757.00 ft			Final	42000.00 lb
Depth to Bottom Packer:	ft				
Interval between Packers:	28.00 ft				
Tool Length:	48.00 ft				
Number of Packers:	2	Diameter: 6.75 inches			

Tool Comments: Shale Packer is in tool. Replaced bottom packer with Shale Packer.

Tool Description	Length (ft)	Serial No.	Position	Depth (ft)	Accum. Lengths
Change Over Sub	1.00			3738.00	
Shut In Tool	5.00			3743.00	
Hydraulic tool	5.00			3748.00	
Packer	4.00			3752.00	20.00 Bottom Of Top Packer
Packer	5.00			3757.00	
Stubb	1.00			3758.00	
Recorder	0.00	6719	Outside	3758.00	
Recorder	0.00	6773	Outside	3758.00	
Perforations	24.00			3782.00	
Bullnose	3.00			3785.00	28.00 Bottom Packers & Anchor
Total Tool Length:	48.00				



**TRILOBITE
TESTING, INC**

DRILL STEM TEST REPORT

FLUID SUMMARY

American Warrior, Inc.

23-22s-14w Stafford, Ks.

PO Box 399
Garden City, KS 67846

Hoffmaster #3-23

Job Ticket: 54181

DST#: 2

ATTN: Kurt Talbott

Test Start: 2014.06.12 @ 17:15:52

Mud and Cushion Information

Mud Type: Gel Chem

Cushion Type:

Oil API:

deg API

Mud Weight: 9.00 lb/gal

Cushion Length:

ft

Water Salinity:

10500 ppm

Viscosity: 62.00 sec/qt

Cushion Volume:

bbbl

Water Loss: 11.18 in³

Gas Cushion Type:

Resistivity: 0.00 ohm.m

Gas Cushion Pressure:

psig

Salinity: 10500.00 ppm

Filter Cake: 0.20 inches

Recovery Information

Recovery Table

Length ft	Description	Volume bbl
10.00	DRLG Mud 100%m	0.140

Total Length: 10.00 ft Total Volume: 0.140 bbl

Num Fluid Samples: 0

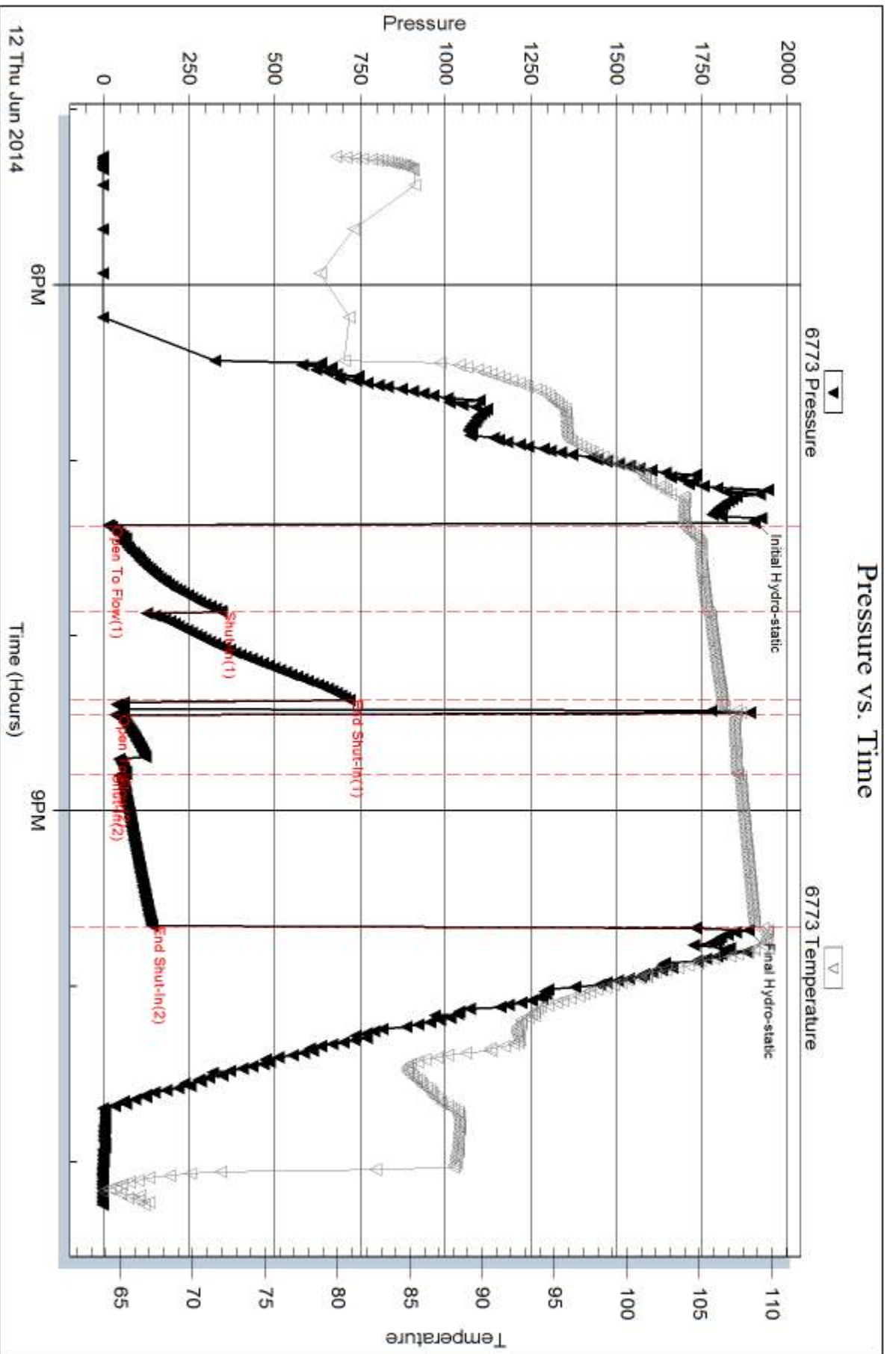
Num Gas Bombs: 0

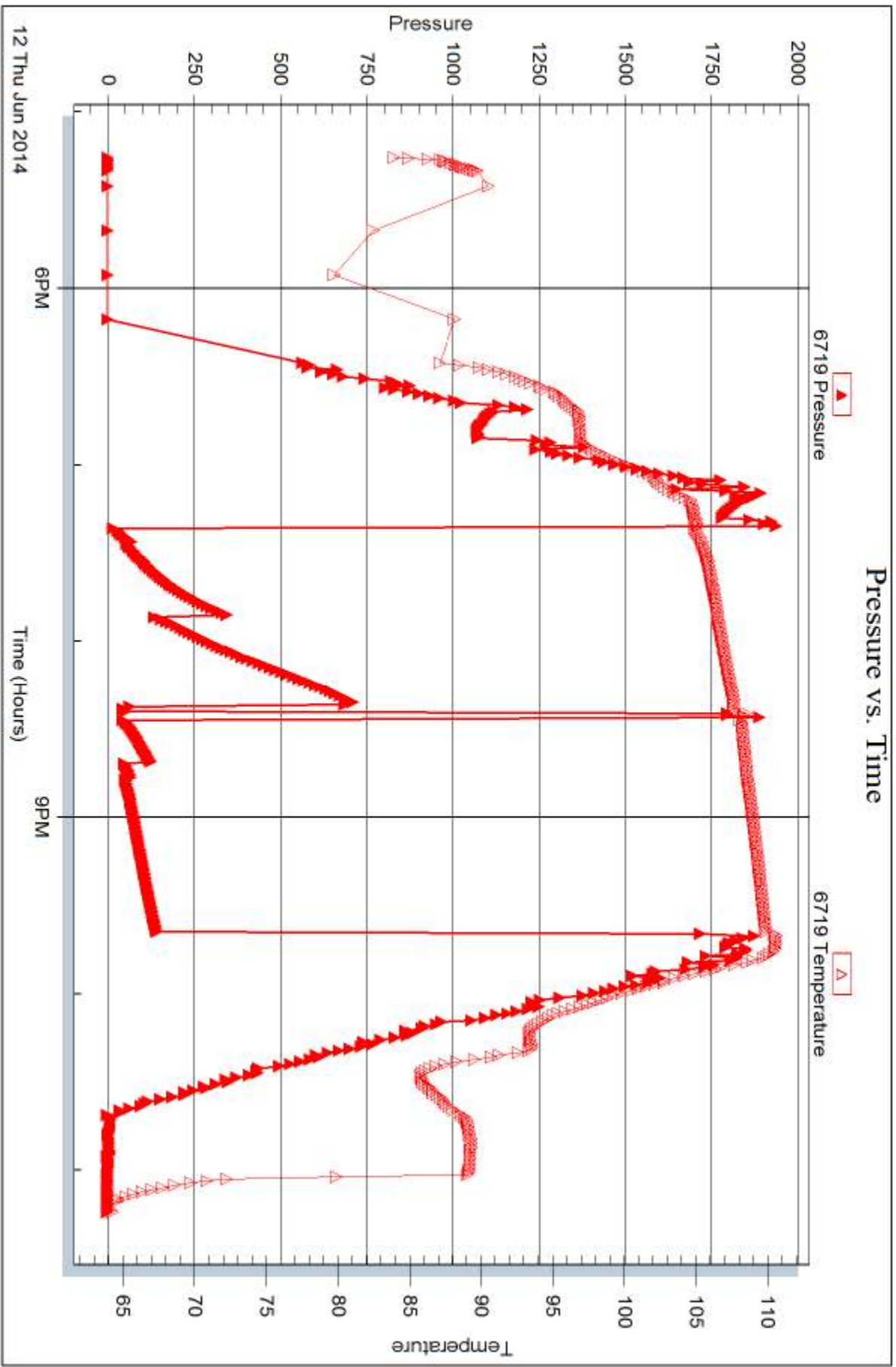
Serial #: none

Laboratory Name:

Laboratory Location:

Recovery Comments:







DRILL STEM TEST REPORT

Prepared For: **American Warrior, Inc.**

PO Box 399
Garden City, KS 67846

ATTN: Kurt Talbott

Hoffmaster #3-23

23-22s-14w Stafford, Ks.

Start Date: 2014.06.13 @ 12:00:04

End Date: 2014.06.13 @ 19:07:04

Job Ticket #: 54182 DST #: 3

Trilobite Testing, Inc

PO Box 362 Hays, KS 67601

ph: 785-625-4778 fax: 785-625-5620

Printed: 2014.06.16 @ 13:15:53



**TRILOBITE
TESTING, INC.**

DRILL STEM TEST REPORT

American Warrior, Inc.
PO Box 399
Garden City, KS 67846
ATTN: Kurt Talbott

23-22s-14w Stafford, Ks.

Hoffmaster #3-23

Job Ticket: 54182

DST#: 3

Test Start: 2014.06.13 @ 12:00:04

GENERAL INFORMATION:

Formation: **Simpson/Arbuckle**

Deviated: No Whipstock: ft (KB)

Time Tool Opened: 13:43:19

Time Test Ended: 19:07:04

Test Type: Conventional Bottom Hole (Reset)

Tester: Matt Smith

Unit No: 53

Interval: 3788.00 ft (KB) To 3859.00 ft (KB) (TVD)

Reference Elevations: 1938.00 ft (KB)

Total Depth: 3859.00 ft (KB) (TVD)

1930.00 ft (CF)

Hole Diameter: 7.88 inches Hole Condition: Fair

KB to GR/CF: 8.00 ft

Serial #: 6773 Outside

Press@RunDepth: 72.34 psig @ 3789.00 ft (KB)

Capacity: 8000.00 psig

Start Date: 2014.06.13

End Date:

2014.06.13

Last Calib.:

2014.06.13

Start Time: 12:00:09

End Time:

19:07:03

Time On Btm:

2014.06.13 @ 13:39:04

Time Off Btm:

2014.06.13 @ 16:45:04

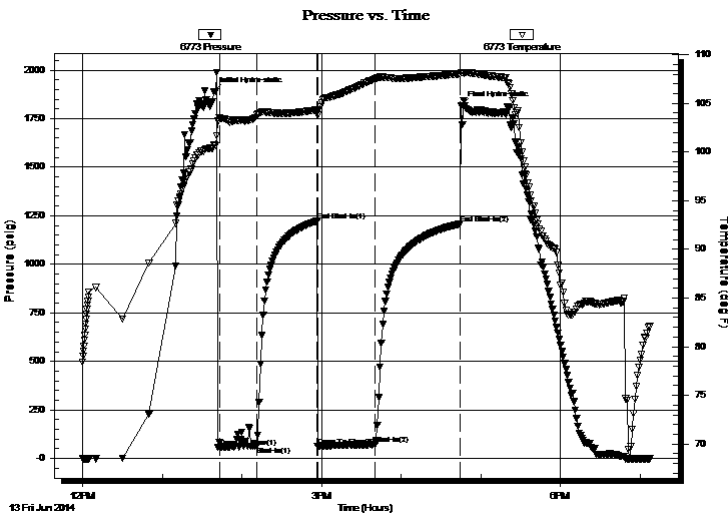
TEST COMMENT: IF: Fair blow . Surf., - 5 1/2 - 6".

IS: No blow .

FF: Weak blow . Surf., - 1 1/2 - 2".

FS: No blow

PRESSURE SUMMARY



Time (Min.)	Pressure (psig)	Temp (deg F)	Annotation
0	1890.59	100.69	Initial Hydro-static
5	56.59	103.46	Open To Flow (1)
33	64.31	103.83	Shut-In(1)
78	1223.55	104.33	End Shut-In(1)
78	63.87	103.79	Open To Flow (2)
122	72.34	107.51	Shut-In(2)
185	1207.52	108.02	End Shut-In(2)
186	1815.53	108.16	Final Hydro-static

Recovery

Length (ft)	Description	Volume (bbl)
62.00	GOWCM 1%g 1%o 3%w 95%m	0.87
30.00	GOWCM 3%g 1%o 1%w 95%m	0.42
0.00	402' G.I.P. 100%g	0.00

* Recovery from multiple tests

Gas Rates

	Choke (inches)	Pressure (psig)	Gas Rate (Mcf/d)



**TRILOBITE
TESTING, INC**

DRILL STEM TEST REPORT

TOOL DIAGRAM

American Warrior, Inc.

23-22s-14w Stafford, Ks.

PO Box 399
Garden City, KS 67846

Hoffmaster #3-23

Job Ticket: 54182

DST#: 3

ATTN: Kurt Talbott

Test Start: 2014.06.13 @ 12:00:04

Tool Information

Drill Pipe:	Length: 3792.00 ft	Diameter: 3.80 inches	Volume: 53.19 bbl	Tool Weight:	2400.00 lb
Heavy Wt. Pipe:	Length: 0.00 ft	Diameter: 0.00 inches	Volume: 0.00 bbl	Weight set on Packer:	24000.00 lb
Drill Collar:	Length: 0.00 ft	Diameter: 2.25 inches	Volume: 0.00 bbl	Weight to Pull Loose:	54000.00 lb
			<u>Total Volume: 53.19 bbl</u>	Tool Chased	10.00 ft
Drill Pipe Above KB:	24.00 ft			String Weight: Initial	42000.00 lb
Depth to Top Packer:	3788.00 ft			Final	44000.00 lb
Depth to Bottom Packer:	ft				
Interval between Packers:	71.00 ft				
Tool Length:	91.00 ft				
Number of Packers:	2	Diameter: 6.75 inches			

Tool Comments: Shale Packer is in tool, in place of bottom packer. Slid 10' on IF:

Tool Description	Length (ft)	Serial No.	Position	Depth (ft)	Accum. Lengths
Change Over Sub	1.00			3769.00	
Shut In Tool	5.00			3774.00	
Hydraulic tool	5.00			3779.00	
Packer	4.00			3783.00	20.00 Bottom Of Top Packer
Packer	5.00			3788.00	
Stubb	1.00			3789.00	
Recorder	0.00	6719	Outside	3789.00	
Recorder	0.00	6773	Outside	3789.00	
Perforations	3.00			3792.00	
Change Over Sub	1.00			3793.00	
Drill Pipe	32.00			3825.00	
Change Over Sub	1.00			3826.00	
Perforations	30.00			3856.00	
Bullnose	3.00			3859.00	71.00 Bottom Packers & Anchor

Total Tool Length: 91.00



**TRILOBITE
TESTING, INC**

DRILL STEM TEST REPORT

FLUID SUMMARY

American Warrior, Inc.

23-22s-14w Stafford, Ks.

PO Box 399
Garden City, KS 67846

Hoffmaster #3-23

Job Ticket: 54182

DST#: 3

ATTN: Kurt Talbott

Test Start: 2014.06.13 @ 12:00:04

Mud and Cushion Information

Mud Type: Gel Chem

Cushion Type:

Oil API:

deg API

Mud Weight: 9.00 lb/gal

Cushion Length:

ft

Water Salinity:

10000 ppm

Viscosity: 62.00 sec/qt

Cushion Volume:

bbbl

Water Loss: 10.19 in³

Gas Cushion Type:

Resistivity: 0.00 ohm.m

Gas Cushion Pressure:

psig

Salinity: 10000.00 ppm

Filter Cake: 0.20 inches

Recovery Information

Recovery Table

Length ft	Description	Volume bbbl
62.00	GOWCM 1%g 1%o 3%w 95%m	0.870
30.00	GOWCM 3%g 1%o 1%w 95%m	0.421
0.00	402' G.I.P. 100%g	0.000

Total Length: 92.00 ft Total Volume: 1.291 bbl

Num Fluid Samples: 0

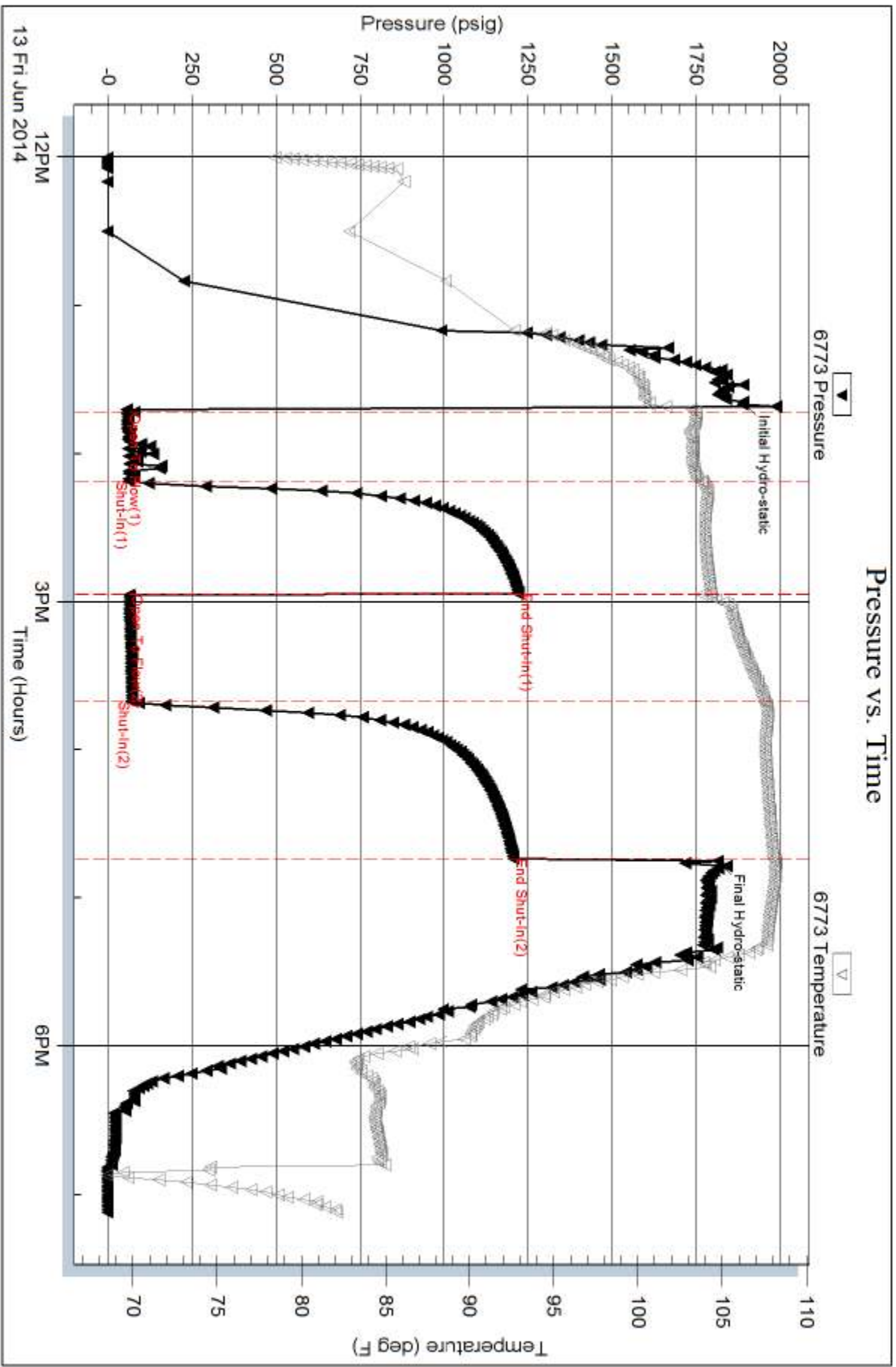
Num Gas Bombs: 0

Serial #: none

Laboratory Name:

Laboratory Location:

Recovery Comments:

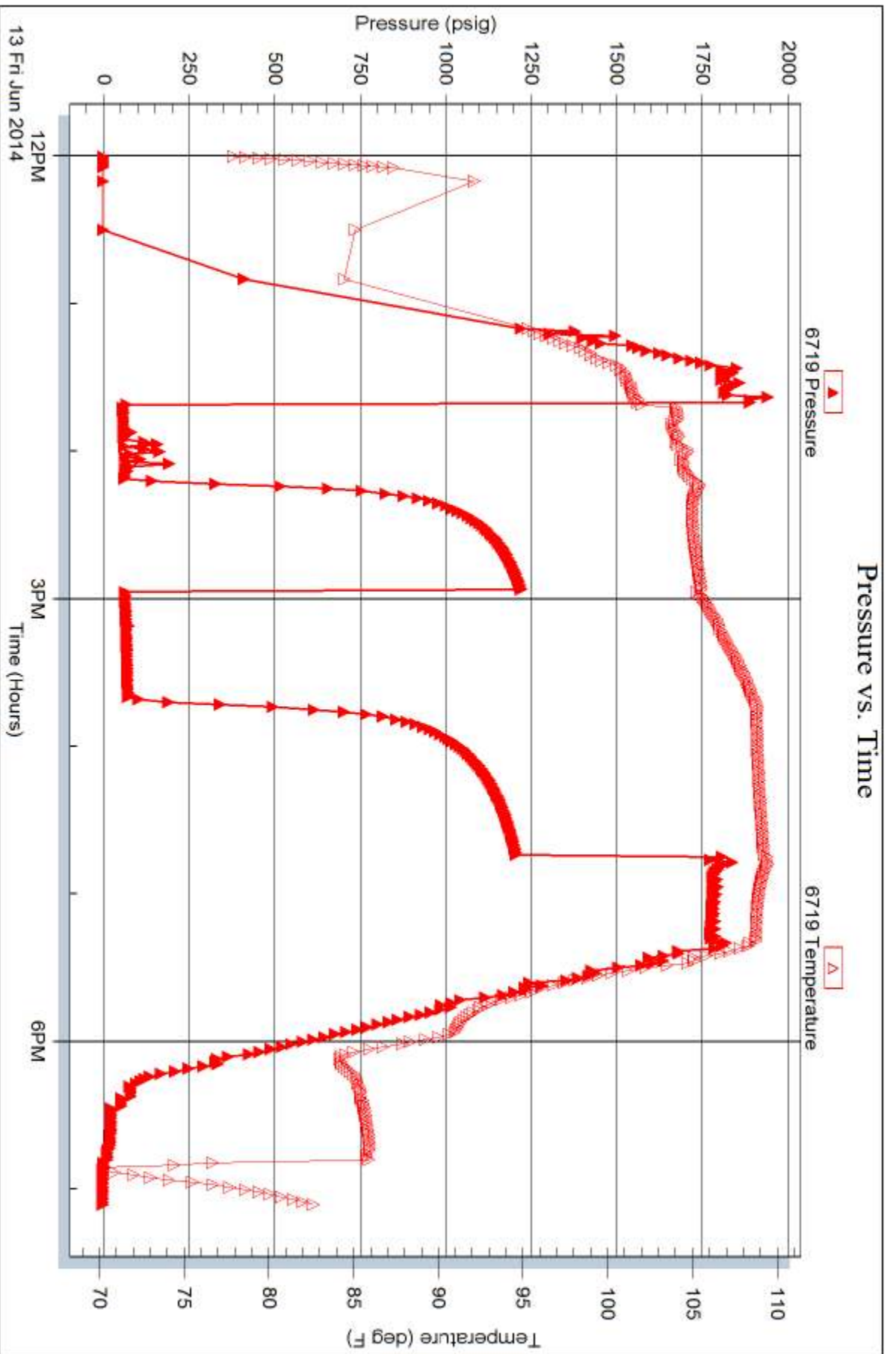


Serial #: 6719

Outside American Warrior, Inc.

Hofmaster #3-23

DST Test Number: 3



Trilobite Testing, Inc

Ref. No: 54182

Printed: 2014.06.16 @ 13:15:54



TRILOBITE TESTING INC.

1515 Commerce Parkway • Hays, Kansas 67601

Test Ticket

NO. 54180

Well Name & No. Hossmaster # 3-23 Test No. 1 Date 6/11/14
 Company American Warrior, Inc. Elevation 1938 KB 1930 GL
 Address 3118 Cummings RD P.O. Box 399 Garden City, KS. 67846
 Co. Rep / Geo. Kurt Talbot Rig Duke Rig # 8
 Location: Sec. 23 Twp. 22S Rge. 14W Co. STASBRO State KS.

Interval Tested 3576 - 3625 Zone Tested Lansing "H+I"
 Anchor Length 49' Drill Pipe Run 3,572' Mud Wt. 8.9
 Top Packer Depth 3571 Drill Collars Run 0 Vis 57
 Bottom Packer Depth 3576 Wt. Pipe Run 0 WL 8.8
 Total Depth 3625 Chlorides 6,600 ppm System LCM 1#

Blow Description IF: Strong blow. B.O.B. in 2 1/2 mins.
ISI: Weak blow. Surf., - 2 1/4". Bleed off in 5 mins.
FF: Strong blow. B.O.B. in 4 mins.
FSI: Fair blow. Surf., - 8". Bleed off in 10 mins.

Rec	Feet of	%gas	%oil	%water	%mud
<u>1049</u>	<u>G.I.P.</u>	<u>100</u>	<u>0</u>	<u>0</u>	<u>0</u>
<u>129'</u>	<u>GOWCM</u>	<u>43</u>	<u>31</u>	<u>14</u>	<u>12</u>
<u>186'</u>	<u>GOWCM</u>	<u>35</u>	<u>20</u>	<u>35</u>	<u>10</u>
<u>124'</u>	<u>WCOM</u>	<u>0</u>	<u>5</u>	<u>90</u>	<u>5</u>
<u>124'</u>	<u>WCOM</u>	<u>0</u>	<u>2</u>	<u>95</u>	<u>3</u>

Rec Total 563' BHT 107° Gravity N.A. API RW .16 @ 63 °F Chlorides 52,500 ppm

(A) Initial Hydrostatic 1776 Test 1150 T-On Location 1530 3:30 PM
 (B) First Initial Flow 91 Jars _____ T-Started 1629
 (C) First Final Flow 164 Safety Joint _____ T-Open 1924
 (D) Initial Shut-In 499 Circ Sub _____ T-Pulled 2225
 (E) Second Initial Flow 164 Hourly Standby _____ T-Out 0421
 (F) Second Final Flow 274 Mileage 76 117.80 Comments wait out storm.
 (G) Final Shut-In 497 Sampler _____
 (H) Final Hydrostatic 1741 Straddle _____

Ruined Shale Packer _____
 Shale Packer _____
 Ruined Packer _____
 Extra Packer _____
 Extra Copies _____
 Extra Recorder _____
 Sub Total 0
 Day Standby _____
 Total 1267.80
 Accessibility _____
 MP/DST Disc't _____
 Sub Total 1267.80

Approved By _____ Our Representative Matthew A. Smith

Trilobite Testing Inc. shall not be liable for damaged of any kind of the property or personnel of the one for whom a test is made, or for any loss suffered or sustained, directly or indirectly, through the use of its equipment, or its statements or opinion concerning the results of any test, tools lost or damaged in the hole shall be paid for at cost by the party for whom the test is made.



TRILOBITE TESTING INC.

1515 Commerce Parkway • Hays, Kansas 67601

Test Ticket

NO. 54181

Well Name & No. Hoffmaster # 3-23 Test No. 2 Date 6/12/14
 Company American Warrior, Inc. Elevation 1938 KB 1930 GL
 Address 3118 Cummings RD P.O. Box 399 Garden City, KS 67846
 Co. Rep / Geo. Kurt Talbott Rig Duke Rig # 8
 Location: Sec. 23 Twp. 22s Rge. 14w Co. Stafford State KS

Interval Tested 3757 - 3785 Zone Tested Urola
 Anchor Length 28' Drill Pipe Run 3,760' Mud Wt. 9.0
 Top Packer Depth 3752 Drill Collars Run 0 Vis 62
 Bottom Packer Depth 3757 Wt. Pipe Run 0 WL 11.2
 Total Depth 3785 Chlorides 10,500 ppm System LCM 1st

Blow Description IF: Weak blow. Surf. - 1/4".
FSI: No blow.
FF: No blow. Flushed - no blow.
FSI: No blow.

Rec	Feet of	%gas	%oil	%water	%mud
<u>10'</u>	<u>Drilling mud (TRACE'S @)</u>			<u>100%</u>	
Rec	Feet of	%gas	%oil	%water	%mud
Rec	Feet of	%gas	%oil	%water	%mud
Rec	Feet of	%gas	%oil	%water	%mud
Rec	Feet of	%gas	%oil	%water	%mud

Rec Total 10' BHT 109° Gravity N.A. API RW N.C. @ —° F Chlorides 10,500 ppm

(A) Initial Hydrostatic <u>1904</u>	<input checked="" type="checkbox"/> Test <u>950</u>	T-On Location <u>1708 (5:08 pm)</u>
(B) First Initial Flow <u>18</u>	<input type="checkbox"/> Jars	T-Started <u>1715</u>
(C) First Final Flow <u>345</u>	<input type="checkbox"/> Safety Joint	T-Open <u>1922</u>
(D) Initial Shut-In <u>718</u>	<input type="checkbox"/> Circ Sub	T-Pulled <u>2140</u>
(E) Second Initial Flow <u>35</u>	<input type="checkbox"/> Hourly Standby	T-Out <u>2314</u>
(F) Second Final Flow <u>66</u>	<input checked="" type="checkbox"/> Mileage <u>(76)</u> <u>117.80</u>	Comments
(G) Final Shut-In <u>142</u>	<input type="checkbox"/> Sampler	
(H) Final Hydrostatic <u>1885</u>	<input type="checkbox"/> Straddle	

Initial Open 30
 Initial Shut-In 30
 Final Flow 30
 Final Shut-In 45

Shale Packer 250
 Extra Packer
 Extra Recorder
 Day Standby
 Accessibility

Ruined Shale Packer
 Ruined Packer
 Extra Copies

Sub Total 0
 Total 1317.80
 MP/DST Disc't

Approved By _____ Our Representative Matthew D. Smith

Trilobite Testing Inc. shall not be liable for damaged of any kind of the property or personnel of the one for whom a test is made, or for any loss suffered or sustained, directly or indirectly, through the use of its equipment, or its statements or opinion concerning the results of any test, tools lost or damaged in the hole shall be paid for at cost by the party for whom the test is made.



TRILOBITE TESTING INC.

1515 Commerce Parkway • Hays, Kansas 67601

Test Ticket

NO. 54182

Well Name & No. Hoffmaster # 3-23 Test No. 3 Date 6/13/14
 Company American Warrior, Inc. Elevation 1938 KB 1930 GL
 Address 3118 Cummings RD P.O. Box 399 Garden City, KS. 67846
 Co. Rep / Geo. Kurt Talbot Rig Duke Rig # 8
 Location: Sec. 23 Twp. 22s Rge. 14w Co. STAFFORD State KS.

Interval Tested 3788 - 3859 Zone Tested Simpson / Arbuckle
 Anchor Length 71 Drill Pipe Run 3,792' Mud Wt. 8.8
 Top Packer Depth 3783 Drill Collars Run 0 Vis 62
 Bottom Packer Depth 3788 Wt. Pipe Run 0 WL 10.2
 Total Depth 3859 Chlorides 10,000 ppm System LCM 1/2#

Blow Description IF: Fair blow. Surf., - 5 1/2 - 6"

ISI: No blow.

FF: Weak blow. Surf., - 1 1/2 - 2"

FSI: No blow.

Rec	Feet of	%gas	%oil	%water	%mud
<u>62'</u>	<u>Gowcm</u>	<u>1%</u>	<u>1%</u>	<u>3%</u>	<u>95%</u>
<u>30'</u>	<u>Gowcm</u>	<u>3%</u>	<u>1%</u>	<u>1%</u>	<u>95%</u>
<u>402'</u>	<u>G.I.P.</u>	<u>100%</u>	<u>0%</u>	<u>0%</u>	<u>0%</u>
Rec	Feet of	%gas	%oil	%water	%mud
Rec	Feet of	%gas	%oil	%water	%mud

Rec Total 92' BHT 108' Gravity N.A. API RW N.C. @ °F Chlorides 10,000 ppm

(A) Initial Hydrostatic 1890 Test 1150 T-On Location 1153 (11:53A)
 (B) First Initial Flow 57 Jars T-Started 1200
 (C) First Final Flow 64 Safety Joint T-Open 1343
 (D) Initial Shut-In 1224 Circ Sub T-Pulled 1645
 (E) Second Initial Flow 64 Hourly Standby T-Out 1907
 (F) Second Final Flow 72 Mileage 76 117.80 Comments
 (G) Final Shut-In 1208 Sampler
 (H) Final Hydrostatic 1815 Straddle Ruined Shale Packer

Initial Open 30 Shale Packer 250 Ruined Packer
 Initial Shut-In 45 Extra Packer Extra Copies
 Final Flow 45 Extra Recorder Sub Total 0
 Final Shut-In 60 Day Standby Total 1517.80
 Accessibility MP/DST Disc't

Sub Total 1517.80

Approved By Our Representative Matthew A. Smith

Trilobite Testing Inc. shall not be liable for damaged of any kind of the property or personnel of the one for whom a test is made, or for any loss suffered or sustained, directly or indirectly, through the use of its equipment, or its statements or opinion concerning the results of any test, tools lost or damaged in the hole shall be paid for at cost by the party for whom the test is made.