



DIAMOND TESTING
P.O. Box 157
HOISINGTON, KANSAS 67544
(800) 542-7313
DRILL-STEM TEST TICKET
FILE: muench1-16dst4

TIME ON: 09:53
TIME OFF: 17:55

Company New Gulf Lease & Well No. Muench #1-16
Contractor Val Rig #4 Charge to New Gulf
Elevation 3046 KB Formation Ft. Scott Effective Pay _____ Ft. Ticket No. S0468
Date 7-21-14 Sec. 16 Twp. 17 S Range 33 W County Scott State KANSAS
Test Approved By John Goldsmith Diamond Representative Jacob McCallie

Formation Test No. 4 Interval Tested from 4394 ft. to 4556 ft. Total Depth 4556 ft.

Packer Depth 4389 ft. Size 6 3/4 in. Packer depth -- ft. Size 6 3/4 in.

Packer Depth 4394 ft. Size 6 3/4 in. Packer depth -- ft. Size 6 3/4 in.

Depth of Selective Zone Set _____

Top Recorder Depth (Inside) 4375 ft. Recorder Number 5515 Cap. 5,000 P.S.I.

Bottom Recorder Depth (Outside) 4523 ft. Recorder Number 5586 Cap. 5,000 P.S.I.

Below Straddle Recorder Depth _____ ft. Recorder Number _____ Cap. _____ P.S.I.

Mud Type Chem Viscosity 55 Drill Collar Length 30 ft. I.D. 2 1/4 in.

Weight 9.2 Water Loss 9.6 cc. Weight Pipe Length -- ft. I.D. 2 7/8 in.

Chlorides 5,400 P.P.M. Drill Pipe Length 4331 ft. I.D. 3 1/2 in.

Jars: Make STERLING Serial Number 4 Test Tool Length 33 ft. Tool Size 3 1/2-IF in.

Did Well Flow? No Reversed Out No Anchor Length 162 (36.5 A) ft. Size 4 1/2-FH in.

Main Hole Size 7 7/8 Tool Joint Size 4 1/2 XH in. Surface Choke Size 1 in. Bottom Choke Size 5/8 in.

Blow: 1st Open: 1 1/4" Blow- Built to BB in 17 1/2 min 1" BB

2nd Open: 3/4" Blow- Built to BB in 15 1/2 min 7 1/2" BB

Recovered 625 ft. of GIP

Recovered 45 ft. of CO 100% O GRAVITY: 27 @ 60 degrees F

Recovered 275 ft. of SLGCHMCO 9% G 57% O 34% M

Recovered 320 ft. of TOTAL FLUID

Recovered _____ ft. of _____ Price Job _____

Recovered _____ ft. of _____ Other Charges _____

Remarks: _____ Insurance _____

TOOL SAMPLE: 65% O 35% M Total _____

Time Set Packer(s) 12:25 PM A.M. P.M. Time Started Off Bottom 3:40 PM A.M. P.M. Maximum Temperature 122

Initial Hydrostatic Pressure..... (A) 2187 P.S.I.

Initial Flow Period..... Minutes 30 (B) 32 P.S.I. to (C) 72 P.S.I.

Initial Closed In Period..... Minutes 45 (D) 1233 P.S.I.

Final Flow Period..... Minutes 60 (E) 75 P.S.I. to (F) 137 P.S.I.

Final Closed In Period..... Minutes 60 (G) 1116 P.S.I.

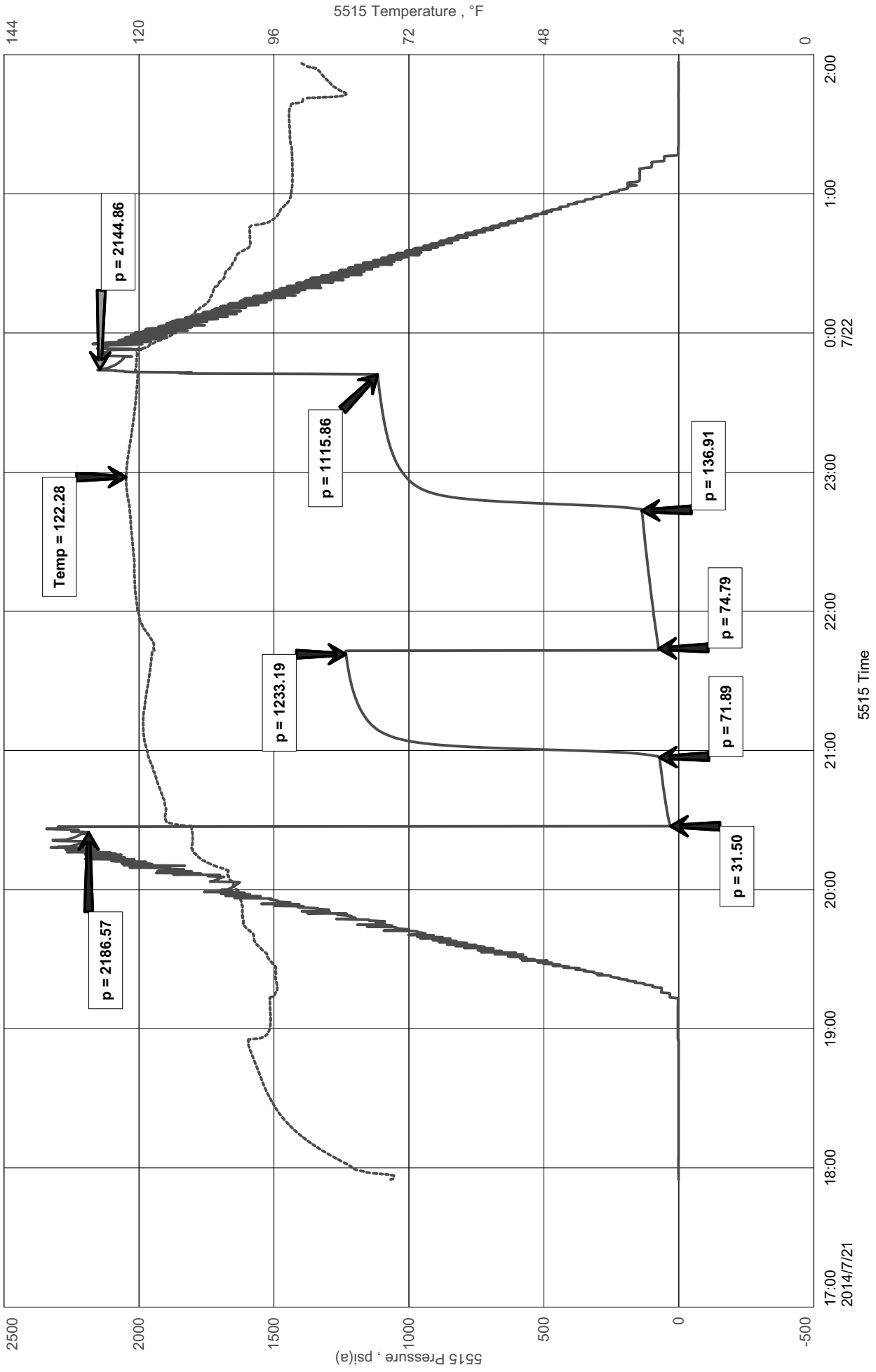
Final Hydrostatic Pressure..... (H) 2145 P.S.I.

Diamond Testing shall not be liable for damages of any kind to the property or personnel of the one for whom a test is made or for any loss suffered or sustained, directly or indirectly, through the use of its equipment, or its statement or opinion concerning the result of any test. Tools lost or damaged in the hole shall be paid for at cost by the party for whom the test is made.

New Gulf
DST #4 Ft. Scott 4394-4556'
Start Test Date: 2014/07/21
Final Test Date: 2014/07/21

Muench #1-16
Formation: DST #4 Ft. Scott 4394-4556'
Pool: WC
Job Number: S0468

Muench #1-16



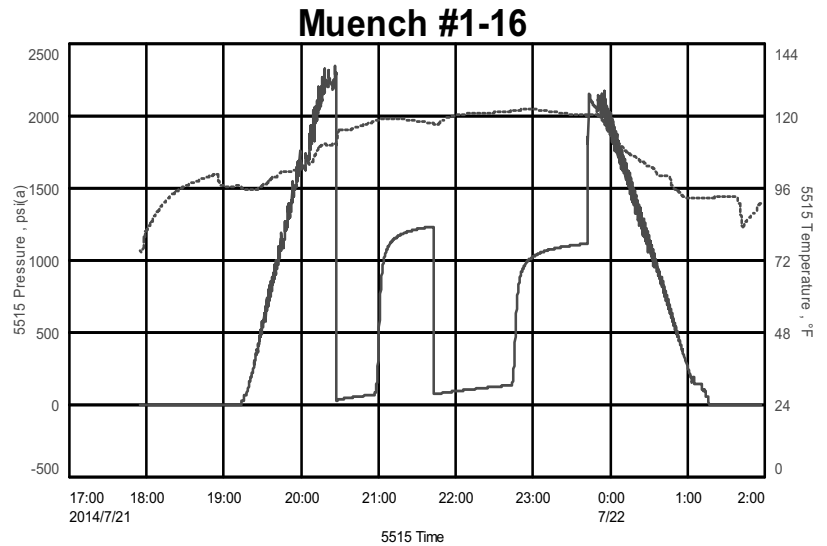
Diamond Testing LLC

General Information Report

Jacob McCallie
620-617-7116
mccallie.dtlc@gmail.com

General Information

Company Name New Gulf
Contact Jim Henkle
Well Name Muench #1-16
Unique Well ID DST #4 Ft. Scott 4394-4556'
Surface Location SEC 16-17S-33W Scott County
Field WC
Well Type Vertical
Test Type Drill Stem Test
Formation DST #4 Ft. Scott 4394-4556'
Well Fluid Type 01 Oil
Start Test Date 2014/07/21
Start Test Time 09:53:00
Final Test Date 2014/07/21
Final Test Time 17:55:00
Job Number S0468
Representative Jacob McCallie
Report Date 2014/07/21
Qualified By John Goldsmith



Test Results

RECOVERED:

625'	GIP		
45'	CO	100% O	GRAVITY: 27 @ 60 degrees F
275'	SLGCHMCO	9% G 57% O 34% M	
320'	TOTAL FLUID		

TOOL SAMPLE:

65% O 35% M