



**DIAMOND TESTING**  
P.O. Box 157  
**HOISINGTON, KANSAS 67544**  
(800) 542-7313  
**DRILL-STEM TEST TICKET**  
FILE: rumsey35dst6

TIME ON: 11:08  
TIME OFF: 19:32

Company Anderson Energy, Inc Lease & Well No. Rumsey #35  
Contractor Southwind Rig #8 Charge to Anderson Energy, Inc  
Elevation 1933 KB Formation Arbuckle Effective Pay -- Ft. Ticket No. S0475  
Date 7-30-14 Sec. 23 Twp. 11 S Range 17 W County Ellis State KANSAS  
Test Approved By Roger L. Martin Diamond Representative Jacob McCallie

Formation Test No. 6 Interval Tested from 3443 ft. to 3458 ft. Total Depth 3458 ft.  
Packer Depth 3438 ft. Size 6 3/4 in. Packer depth -- ft. Size 6 3/4 in.  
Packer Depth 3443 ft. Size 6 3/4 in. Packer depth -- ft. Size 6 3/4 in.

Depth of Selective Zone Set \_\_\_\_\_  
Top Recorder Depth (Inside) 3424 ft. Recorder Number 5515 Cap. 5,000 P.S.I.  
Bottom Recorder Depth (Outside) 3445 ft. Recorder Number 5586 Cap. 5,000 P.S.I.  
Below Straddle Recorder Depth \_\_\_\_\_ ft. Recorder Number \_\_\_\_\_ Cap. \_\_\_\_\_ P.S.I.  
Mud Type Chem Viscosity 55 Drill Collar Length 122 ft. I.D. 2 1/4 in.  
Weight 9.1 Water Loss 8.0 cc. Weight Pipe Length -- ft. I.D. 2 7/8 in.  
Chlorides 4,400 P.P.M. Drill Pipe Length 3288 ft. I.D. 3 1/2 in.  
Jars: Make STERLING Serial Number 4 Test Tool Length 33 ft. Tool Size 3 1/2-IF in.  
Did Well Flow? NO Reversed Out NO Anchor Length 15 ft. Size 4 1/2-FH in.  
Main Hole Size 7 7/8 Tool Joint Size 4 1/2 XH in. Surface Choke Size 1 in. Bottom Choke Size 5/8 in.

Blow: 1st Open: 9" Blow- Built to BB in 46 seconds **NOBB**  
2nd Open: 1/2" Blow- Built to 7 1/2" in 45 min (hydro out) **NOBB**

Recovered 254 ft. of SLOCHMCW 10% O 50% M 40% M  
Recovered 882 ft. of SLMCSLOCW 12% O 79% W 9% M  
Recovered 758 ft. of SLOCSLMCW 5% O 90% W 5% M  
Recovered 122 ft. of SLOCSLMCW 5% O 90% W 5% M

|   |               |
|---|---------------|
| Recovered <u>2016</u> ft. of <u>TOTAL FLUID</u>           | Price Job     |
| Recovered _____ ft. of <u>PH: 7 RW: .2 @ 83 degrees F</u> | Other Charges |
| Remarks: <u>CHLORIDES: 26,000 ppm</u>                     | Insurance     |
| <u>TOOL SAMPLE: 2% O 98% W</u>                            | Total         |

Time Set Packer(s) 1:15 PM <sup>A.M.</sup>/<sub>P.M.</sub> Time Started Off Bottom 4:15 PM <sup>A.M.</sup>/<sub>P.M.</sub> Maximum Temperature 108

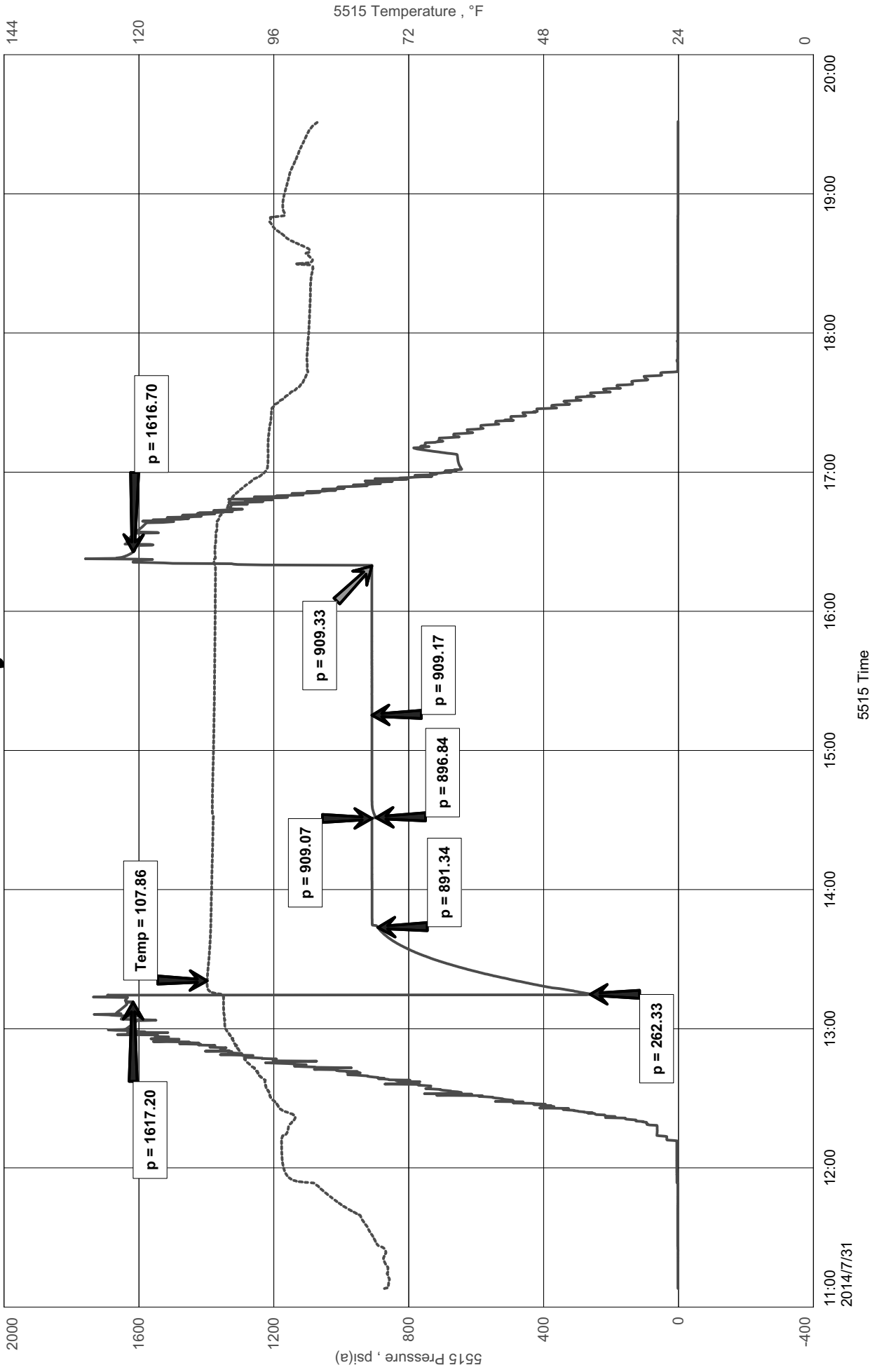
Initial Hydrostatic Pressure..... (A) 1617 P.S.I.  
Initial Flow Period..... Minutes 30 (B) 262 P.S.I. to (C) 891 P.S.I.  
Initial Closed In Period..... Minutes 45 (D) 909 P.S.I.  
Final Flow Period..... Minutes 45 (E) 897 P.S.I. to (F) 909 P.S.I.  
Final Closed In Period..... Minutes 60 (G) 909 P.S.I.  
Final Hydrostatic Pressure..... (H) 1617 P.S.I.

Diamond Testing shall not be liable for damages of any kind to the property or personnel of the one for whom a test is made or for any loss suffered or sustained, directly or indirectly, through the use of its equipment, or its statement or opinion concerning the result of any test. Tools lost or damaged in the hole shall be paid for at cost by the party for whom the test is made.

Anderson Energy Inc.  
DST#6 Arbuckle 3443-3458'  
Start Test Date: 2014/07/31  
Final Test Date: 2014/07/31

Rumsey #35  
Formation: DST#6 Arbuckle 3443-3458'  
Pool: Infield  
Job Number: S0475

# Rumsey #35



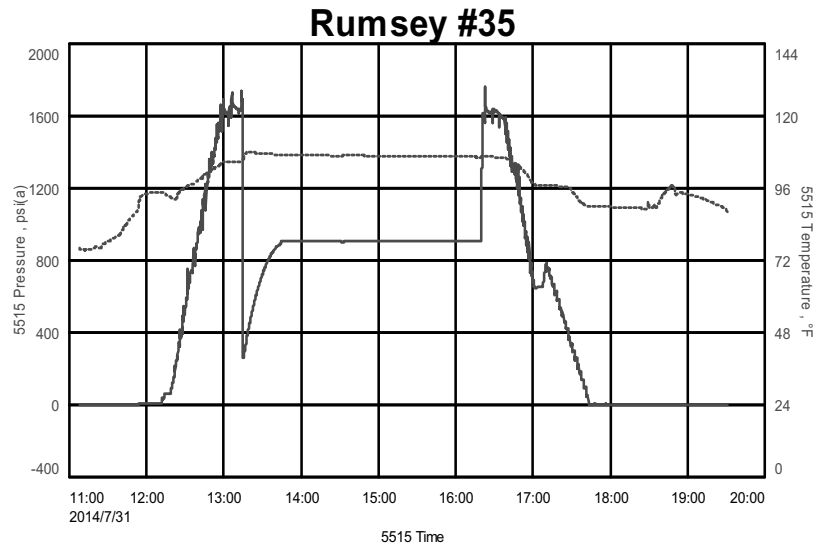
# Diamond Testing LLC

## General Information Report

Jacob McCallie  
620-617-7116  
mccallie.dtlc@gmail.com

### General Information

Company Name Anderson Energy Inc.  
Contact Thomas Anderson  
Well Name Rumsey #35  
Unique Well ID DST#6 Arbuckle 3443-3458'  
Surface Location SEC 23-11S-17W Ellis County  
Field Bemis-Shutts  
Well Type Vertical  
Test Type Drill Stem Test  
Formation DST#6 Arbuckle 3443-3458'  
Well Fluid Type 06 Water  
Start Test Date 2014/07/31  
Start Test Time 11:08:00  
Final Test Date 2014/07/31  
Final Test Time 19:32:00  
Job Number S0475  
Representative Jacob McCallie  
Report Date 2014/07/31  
Qualified By Roger Martin



### Test Results

#### RECOVERY:

|       |             |                                 |
|-------|-------------|---------------------------------|
| 254'  | SLOCHMCW    | 10% O 50% W 40% M               |
| 882'  | SLMCSLOCW   | 12% O 79% W 9% M                |
| 758'  | SLOCSLMCW   | 5% O 90% W 5% M                 |
| 122'  | SLOCSLMCW   | 5% O 90% W 5% M (Drill Collars) |
| 2016' | TOTAL FLUID |                                 |

PH: 7

RW: .3 @ 83 degrees F

Chlordies: 26,000 ppm

#### TOOL SAMPLE:

2% O 98% W