



**TRILOBITE
TESTING, INC**

DRILL STEM TEST REPORT

Vincent Oil Corporation

10-28S-23W Ford

155 N Market Ste 700
Wichita, KS 67202

Droste 2-10

Job Ticket: 58988

DST#: 2

ATTN: Tom Dudgeon

Test Start: 2014.05.14 @ 14:41:34

GENERAL INFORMATION:

Formation: **Morrow**

Deviated: No Whipstock: ft (KB)

Time Tool Opened: 17:14:34

Time Test Ended: 01:47:34

Test Type: Conventional Bottom Hole (Reset)

Tester: Leal Cason

Unit No: 74

Interval: 5082.00 ft (KB) To 5138.00 ft (KB) (TVD)

Reference Elevations: 2473.00 ft (KB)

Total Depth: 5138.00 ft (KB) (TVD)

2461.00 ft (CF)

Hole Diameter: 7.88 inches Hole Condition: Good

KB to GR/CF: 12.00 ft

Serial #: 6798

Inside

Press@RunDepth: 1050.44 psig @ 5083.00 ft (KB)

Capacity: 8000.00 psig

Start Date: 2014.05.14

End Date:

2014.05.15

Last Calib.:

2014.05.15

Start Time: 14:41:35

End Time:

01:47:34

Time On Btm:

2014.05.14 @ 17:13:49

Time Off Btm:

2014.05.14 @ 21:08:04

TEST COMMENT:

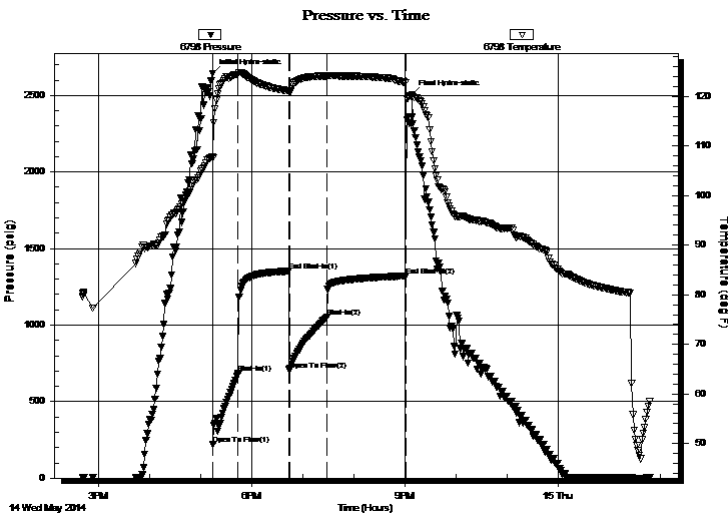
IF: Strong Blow , BOB in 90 seconds

IS: 4 inch Blow Back

FF: Strong Blow , BOB in 90 seconds, GTS in 25 minutes, TSTM, Caught Sample

FS: No Blow Back

PRESSURE SUMMARY



Time (Min.)	Pressure (psig)	Temp (deg F)	Annotation
0	2644.26	107.85	Initial Hydro-static
1	221.63	107.62	Open To Flow (1)
31	684.06	124.46	Shut-In(1)
90	1352.01	121.08	End Shut-In(1)
91	704.90	120.96	Open To Flow (2)
135	1050.44	124.11	Shut-In(2)
227	1319.30	122.81	End Shut-In(2)
235	2502.79	120.05	Final Hydro-static

Recovery

Length (ft)	Description	Volume (bbl)
0.00	2350 GIP	0.00
126.00	Water	1.77
1764.00	GWCO 10%G 10%W 80%O	24.74
630.00	GSY Oil 20%G 80%O	8.84
199.00	GMMCO 20%G 10%W 10%M 60%O	2.79

* Recovery from multiple tests

Gas Rates

	Choke (inches)	Pressure (psig)	Gas Rate (Mcf/d)



**TRILOBITE
TESTING, INC**

DRILL STEM TEST REPORT

FLUID SUMMARY

Vincent Oil Corporation

10-28S-23W Ford

155 N Market Ste 700
Wichita, KS 67202

Droste 2-10

Job Ticket: 58988

DST#: 2

ATTN: Tom Dudgeon

Test Start: 2014.05.14 @ 14:41:34

Mud and Cushion Information

Mud Type: Gel Chem

Cushion Type:

Oil API:

29.8 deg API

Mud Weight: 9.00 lb/gal

Cushion Length:

ft

Water Salinity:

75000 ppm

Viscosity: 55.00 sec/qt

Cushion Volume:

bbbl

Water Loss: 8.37 in³

Gas Cushion Type:

Resistivity: ohm.m

Gas Cushion Pressure:

psig

Salinity: 6800.00 ppm

Filter Cake: 0.02 inches

Recovery Information

Recovery Table

Length ft	Description	Volume bbl
0.00	2350 GIP	0.000
126.00	Water	1.767
1764.00	GWCO 10%G 10%W 80%O	24.744
630.00	GSY Oil 20%G 80%O	8.837
199.00	GMWCO 20%G 10%W 10%M 60%O	2.791

Total Length: 2719.00 ft Total Volume: 38.139 bbl

Num Fluid Samples: 0

Num Gas Bombs: 0

Serial #:

Laboratory Name:

Laboratory Location:

Recovery Comments: Gravity w as 30.8 @ 70 degrees

RW w as .13 @ 62 degrees

Serial #: 6798

Inside

Vincent Oil Corporation

Droste 2-10

DST Test Number: 2

Pressure vs. Time

