



**TRILOBITE TESTING, INC.**

# DRILL STEM TEST REPORT

Herman L. Loeb, LLC.  
 P.O. Box 838  
 Lawrenceville, IL 62439  
 ATTN: Tom Pronhold

**14-33s-26w Meade Co., KS**  
**MadDog 1-14**  
 Job Ticket: 51985      **DST#: 3**  
 Test Start: 2014.05.24 @ 16:15:25

## GENERAL INFORMATION:

Formation: **Chester C**  
 Deviated: No Whipstock: 0.00 ft (KB)  
 Time Tool Opened: 18:46:10  
 Time Test Ended: 23:58:25  
 Interval: **5476.00 ft (KB) To 5525.00 ft (KB) (TVD)**  
 Total Depth: 5525.00 ft (KB) (TVD)  
 Hole Diameter: 7.88 inches Hole Condition: Fair  
 Test Type: Conventional Bottom Hole (Reset)  
 Tester: Ryan Reynolds  
 Unit No: 68  
 Reference Elevations: 2145.00 ft (KB)  
 2134.00 ft (CF)  
 KB to GR/CF: 11.00 ft

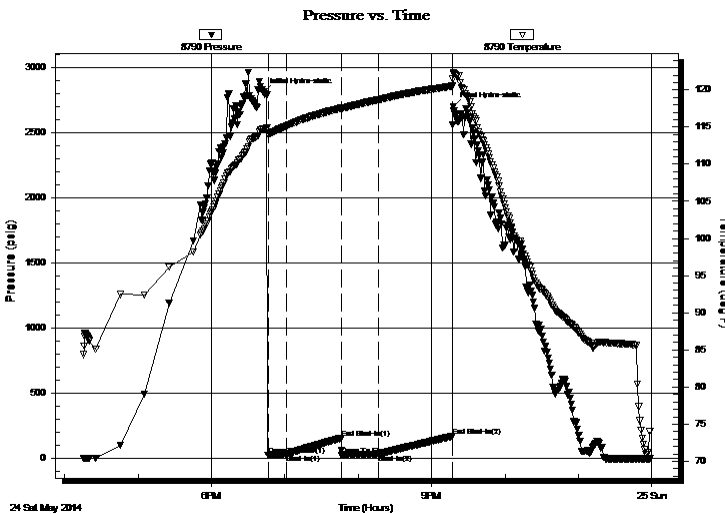
## Serial #: 8790

Inside

Press @ Run Depth: 30.48 psig @ 5483.00 ft (KB)      Capacity: 8000.00 psig  
 Start Date: 2014.05.24      End Date: 2014.05.24      Last Calib.: 2014.05.25  
 Start Time: 16:15:30      End Time: 23:58:24      Time On Btm: 2014.05.24 @ 18:42:25  
 Time Off Btm: 2014.05.24 @ 21:17:40

TEST COMMENT: IF: Fair blow . 1 - 5"  
 IS: No blow  
 FF: Weak blow . 2 - 3"  
 FS: No blow

## PRESSURE SUMMARY



Time (Min.)	Pressure (psig)	Temp (deg F)	Annotation
0	2809.10	114.73	Initial Hydro-static
4	24.45	114.18	Open To Flow (1)
19	30.44	115.15	Shut-In(1)
64	156.53	117.55	End Shut-In(1)
64	25.30	117.51	Open To Flow (2)
94	30.48	118.67	Shut-In(2)
155	170.54	120.52	End Shut-In(2)
156	2701.63	122.37	Final Hydro-static

## Recovery

Length (ft)	Description	Volume (bbl)
20.00	Drig mud	0.10
0.00	200' GIP	0.00

\* Recovery from multiple tests

## Gas Rates

Choke (inches)	Pressure (psig)	Gas Rate (Mcf/d)



**TRILOBITE  
TESTING, INC.**

# DRILL STEM TEST REPORT

**FLUID SUMMARY**

Herman L. Loeb, LLC.  
P.O. Box 838  
Lawrenceville, IL 62439  
ATTN: Tom Pronhold

**14-33s-26w Meade Co., KS**  
**MadDog 1-14**  
Job Ticket: 51985      **DST#: 3**  
Test Start: 2014.05.24 @ 16:15:25

## Mud and Cushion Information

Mud Type: Gel Chem	Cushion Type:	Oil API:	deg API
Mud Weight: 9.00 lb/gal	Cushion Length: ft	Water Salinity:	4100 ppm
Viscosity: 55.00 sec/qt	Cushion Volume: bbl		
Water Loss: 9.99 in <sup>3</sup>	Gas Cushion Type:		
Resistivity: ohm.m	Gas Cushion Pressure: psig		
Salinity: 4100.00 ppm			
Filter Cake: 0.02 inches			

## Recovery Information

Recovery Table

Length ft	Description	Volume bbl
20.00	Drig mud	0.098
0.00	200' GIP	0.000

Total Length: 20.00 ft      Total Volume: 0.098 bbl  
 Num Fluid Samples: 0      Num Gas Bombs: 0      Serial #: none  
 Laboratory Name:      Laboratory Location:  
 Recovery Comments:

