



TRILOBITE TESTING, INC.

DRILL STEM TEST REPORT

Brito Oil Company
 1223 N. Rock Rd.
 STE 100 Wichita KS 67601
 ATTN: Raul Brito

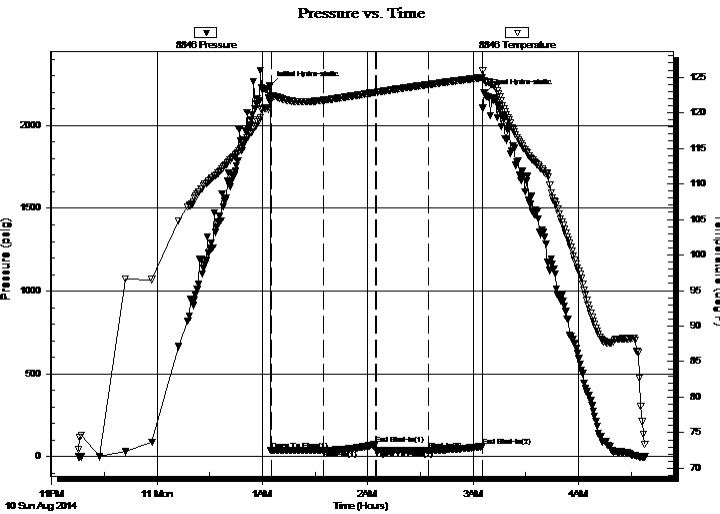
24-10-32 Thomas Co KS
Eberlee Baalman 1 24
 Job Ticket: 59113 **DST#: 3**
 Test Start: 2014.08.10 @ 23:15:15

GENERAL INFORMATION:

Formation: **Myrick Station**
 Deviated: No Whipstock: ft (KB)
 Time Tool Opened: 01:05:00
 Time Test Ended: 04:38:15
 Interval: **4490.00 ft (KB) To 4540.00 ft (KB) (TVD)**
 Total Depth: 4540.00 ft (KB) (TVD)
 Hole Diameter: 7.88 inches Hole Condition: Fair
 Test Type: Conventional Bottom Hole (Reset)
 Tester: Mike Roberts
 Unit No: 65
 Reference Elevations: 3064.00 ft (KB)
 3059.00 ft (CF)
 KB to GR/CF: 5.00 ft

Serial #: 8846 Inside
 Press @ Run Depth: 38.69 psig @ 4496.00 ft (KB) Capacity: 8000.00 psig
 Start Date: 2014.08.10 End Date: 2014.08.11 Last Calib.: 2014.08.11
 Start Time: 23:15:15 End Time: 04:38:15 Time On Btm: 2014.08.11 @ 01:04:30
 Time Off Btm: 2014.08.11 @ 03:06:15

TEST COMMENT: IF: Built to 1/4" blow
 IS: No return blow
 FF: No blow
 FS: No return blow



PRESSURE SUMMARY

Time (Min.)	Pressure (psig)	Temp (deg F)	Annotation
0	2239.70	122.34	Initial Hydro-static
1	36.98	122.26	Open To Flow (1)
31	37.84	121.77	Shut-In(1)
60	74.59	122.88	End Shut-In(1)
61	37.98	122.87	Open To Flow (2)
91	38.69	123.97	Shut-In(2)
121	62.09	124.94	End Shut-In(2)
122	2194.93	124.53	Final Hydro-static

Recovery

Length (ft)	Description	Volume (bbl)
3.00	mud with oil spots	0.01

* Recovery from multiple tests

Gas Rates

Choke (inches)	Pressure (psig)	Gas Rate (MMcf/d)



**TRILOBITE
TESTING, INC.**

DRILL STEM TEST REPORT

FLUID SUMMARY

Brito Oil Company
1223 N. Rock Rd.
STE 100 Wichita KS 67601
ATTN: Raul Brito

24-10-32 Thomas Co KS
Eberlee Baalman 1 24
Job Ticket: 59113 **DST#: 3**
Test Start: 2014.08.10 @ 23:15:15

Mud and Cushion Information

Mud Type: Gel Chem	Cushion Type:	Oil API:	0 deg API
Mud Weight: 9.00 lb/gal	Cushion Length: ft	Water Salinity:	0 ppm
Viscosity: 53.00 sec/qt	Cushion Volume: bbl		
Water Loss: 8.78 in ³	Gas Cushion Type:		
Resistivity: 0.00 ohm.m	Gas Cushion Pressure: psig		
Salinity: 3000.00 ppm			
Filter Cake: 1.00 inches			

Recovery Information

Recovery Table

Length ft	Description	Volume bbl
3.00	mud w ith oil spots	0.015

Total Length: 3.00 ft Total Volume: 0.015 bbl
Num Fluid Samples: 0 Num Gas Bombs: 0 Serial #:
Laboratory Name: Laboratory Location:
Recovery Comments:

Serial #: 8846

Inside

Brito Oil Company

Eberlee Baalman 1 24

DST Test Number: 3

