



DRILL STEM TEST REPORT

Prepared For: **Eagle Creek Croporation**

8100 E 22nd St
North Blog. 1500
Wichita KS 67226

ATTN: Gary Gensch

Wilkinson #3-18

18-17s-34w Scott,KS

Start Date: 2014.07.31 @ 23:10:00

End Date: 2014.08.01 @ 06:07:00

Job Ticket #: 56667 DST #: 1

Trilobite Testing, Inc
1515 Commerce Parkway Hays, KS 67601
ph: 785-625-4778 fax: 785-625-5620

Printed: 2014.08.05 @ 16:02:13



**TRILOBITE
TESTING, INC**

DRILL STEM TEST REPORT

Eagle Creek Croperation

18-17s-34w Scott,KS

8100 E 22nd St
North Blog. 1500
Wichita KS 67226
ATTN: Gary Gensch

Wilkinson #3-18

Job Ticket: 56667

DST#: 1

Test Start: 2014.07.31 @ 23:10:00

GENERAL INFORMATION:

Formation: **LKC I**

Deviated: No Whipstock: ft (KB)

Time Tool Opened: 01:50:15

Time Test Ended: 06:07:00

Test Type: Conventional Bottom Hole (Initial)

Tester: Justin Harris

Unit No: 72

Interval: 4196.00 ft (KB) To 4234.00 ft (KB) (TVD)

Reference Elevations: 3079.00 ft (KB)

Total Depth: 4234.00 ft (KB) (TVD)

3071.00 ft (CF)

Hole Diameter: 7.88 inches Hole Condition: Poor

KB to GR/CF: 8.00 ft

Serial #: 6772 Outside

Press@RunDepth: 23.52 psig @ 4197.00 ft (KB)

Capacity: 8000.00 psig

Start Date: 2014.07.31

End Date:

2014.08.01

Last Calib.: 2014.08.01

Start Time: 23:10:05

End Time:

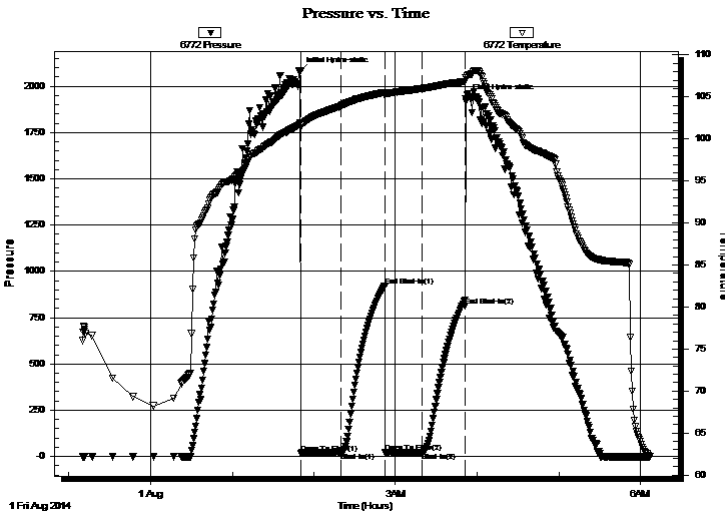
06:06:59

Time On Btm: 2014.08.01 @ 01:50:00

Time Off Btm: 2014.08.01 @ 03:51:30

TEST COMMENT: 30: Weak surface blow died in 20 min.
30: No Return.
30: No Blow .
30: No Return.

PRESSURE SUMMARY



Time (Min.)	Pressure (psig)	Temp (deg F)	Annotation
0	2077.78	101.95	Initial Hydro-static
1	18.52	101.38	Open To Flow (1)
31	21.39	103.96	Shut-In(1)
62	919.56	105.54	End Shut-In(1)
63	21.86	105.16	Open To Flow (2)
90	23.52	106.02	Shut-In(2)
122	813.11	106.83	End Shut-In(2)
122	1933.87	107.30	Final Hydro-static

Recovery

Length (ft)	Description	Volume (bbl)
5.00	mud	0.02

Gas Rates

	Choke (inches)	Pressure (psig)	Gas Rate (Mcf/d)



DRILL STEM TEST REPORT

Eagle Creek Croperation
 8100 E 22nd St
 North Blog. 1500
 Wichita KS 67226
 ATTN: Gary Gensch

18-17s-34w Scott, KS
Wilkinson #3-18
 Job Ticket: 56667 **DST#: 1**
 Test Start: 2014.07.31 @ 23:10:00

GENERAL INFORMATION:

Formation: **LKC I**
 Deviated: No Whipstock: ft (KB)
 Time Tool Opened: 01:50:15
 Time Test Ended: 06:07:00
 Interval: **4196.00 ft (KB) To 4234.00 ft (KB) (TVD)**
 Total Depth: 4234.00 ft (KB) (TVD)
 Hole Diameter: 7.88 inches Hole Condition: Poor
 Test Type: Conventional Bottom Hole (Initial)
 Tester: Justin Harris
 Unit No: 72
 Reference Elevations: 3079.00 ft (KB)
 3071.00 ft (CF)
 KB to GR/CF: 8.00 ft

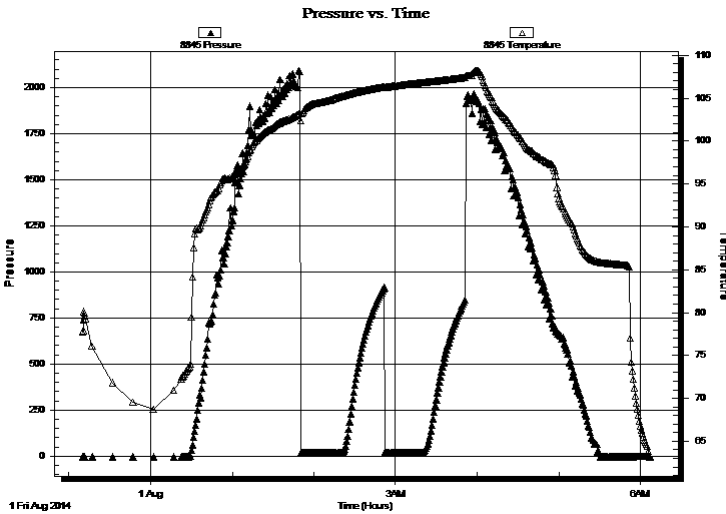
Serial #: 8845

Inside

Press@RunDepth: psig @ 4197.00 ft (KB) Capacity: 8000.00 psig
 Start Date: 2014.07.31 End Date: 2014.08.01 Last Calib.: 2014.08.01
 Start Time: 23:10:05 End Time: 06:06:59 Time On Btm:
 Time Off Btm:

TEST COMMENT: 30: Weak surface blow died in 20 min.
 30: No Return.
 30: No Blow.
 30: No Return.

PRESSURE SUMMARY



Time (Min.)	Pressure (psig)	Temp (deg F)	Annotation

Recovery

Length (ft)	Description	Volume (bbl)
5.00	mud	0.02

Gas Rates

	Choke (inches)	Pressure (psig)	Gas Rate (Mcf/d)



**TRILOBITE
TESTING, INC**

DRILL STEM TEST REPORT

TOOL DIAGRAM

Eagle Creek Croporation

18-17s-34w Scott,KS

8100 E22nd St
North Blog. 1500
Wichita KS 67226
ATTN: Gary Gensch

Wilkinson #3-18

Job Ticket: 56667

DST#: 1

Test Start: 2014.07.31 @ 23:10:00

Tool Information

Drill Pipe:	Length: 4162.50 ft	Diameter: 3.80 inches	Volume: 58.39 bbl	Tool Weight: 2500.00 lb
Heavy Wt. Pipe:	Length: 0.00 ft	Diameter: inches	Volume: 0.00 bbl	Weight set on Packer: 30000.00 lb
Drill Collar:	Length: 28.50 ft	Diameter: 2.25 inches	Volume: 0.14 bbl	Weight to Pull Loose: 75000.00 lb
			<u>Total Volume: 58.53 bbl</u>	Tool Chased 0.00 ft
Drill Pipe Above KB:	23.00 ft			String Weight: Initial 64000.00 lb
Depth to Top Packer:	4196.00 ft			Final 65000.00 lb
Depth to Bottom Packer:	ft			
Interval between Packers:	38.00 ft			
Tool Length:	66.00 ft			
Number of Packers:	2	Diameter: 6.75 inches		

Tool Comments:

Tool Description

Tool Description	Length (ft)	Serial No.	Position	Depth (ft)	Accum. Lengths
Change Over Sub	1.00			4169.00	
Shut In Tool	5.00			4174.00	
Hydraulic tool	5.00			4179.00	
Jars	5.00			4184.00	
Safety Joint	3.00			4187.00	
Packer	5.00			4192.00	28.00 Bottom Of Top Packer
Packer	4.00			4196.00	
Stubb	1.00			4197.00	
Recorder	0.00	6772	Outside	4197.00	
Recorder	0.00	8845	Inside	4197.00	
Change Over Sub	1.00			4198.00	
Drill Pipe	30.00			4228.00	
Change Over Sub	1.00			4229.00	
Bullnose	5.00			4234.00	38.00 Bottom Packers & Anchor

Total Tool Length: 66.00



**TRILOBITE
TESTING, INC**

DRILL STEM TEST REPORT

FLUID SUMMARY

Eagle Creek Croporation

18-17s-34w Scott,KS

8100 E 22nd St
North Blog. 1500
Wichita KS 67226
ATTN: Gary Gensch

Wilkinson #3-18

Job Ticket: 56667

DST#: 1

Test Start: 2014.07.31 @ 23:10:00

Mud and Cushion Information

Mud Type: Gel Chem

Cushion Type:

Oil API:

0 deg API

Mud Weight: 9.00 lb/gal

Cushion Length:

ft

Water Salinity:

0 ppm

Viscosity: 59.00 sec/qt

Cushion Volume:

bbf

Water Loss: 10.37 in³

Gas Cushion Type:

Resistivity: ohm.m

Gas Cushion Pressure:

psig

Salinity: 6000.00 ppm

Filter Cake: 1.00 inches

Recovery Information

Recovery Table

Length ft	Description	Volume bbf
5.00	mud	0.025

Total Length: 5.00 ft Total Volume: 0.025 bbf

Num Fluid Samples: 0

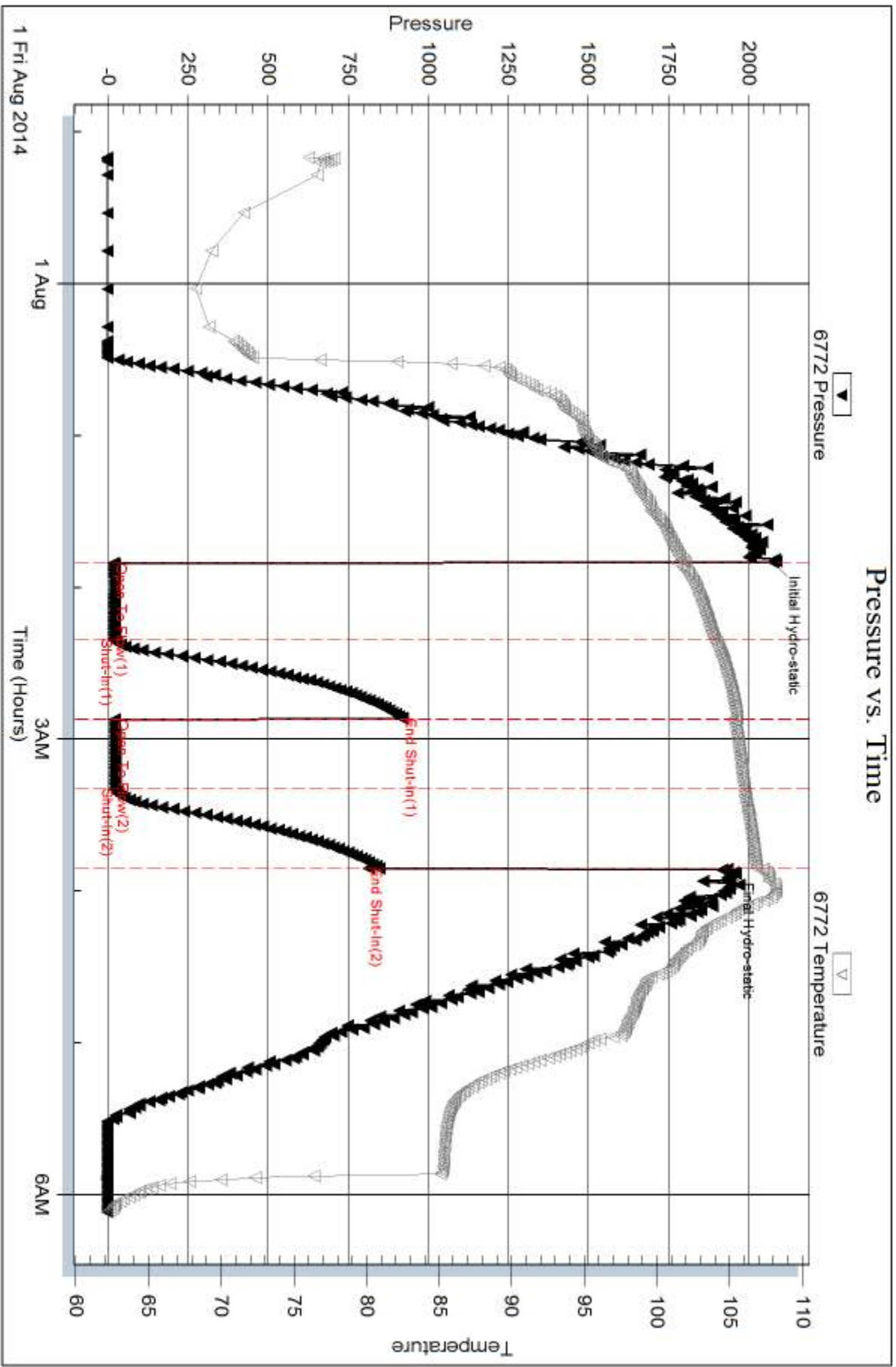
Num Gas Bombs: 0

Serial #:

Laboratory Name:

Laboratory Location:

Recovery Comments:



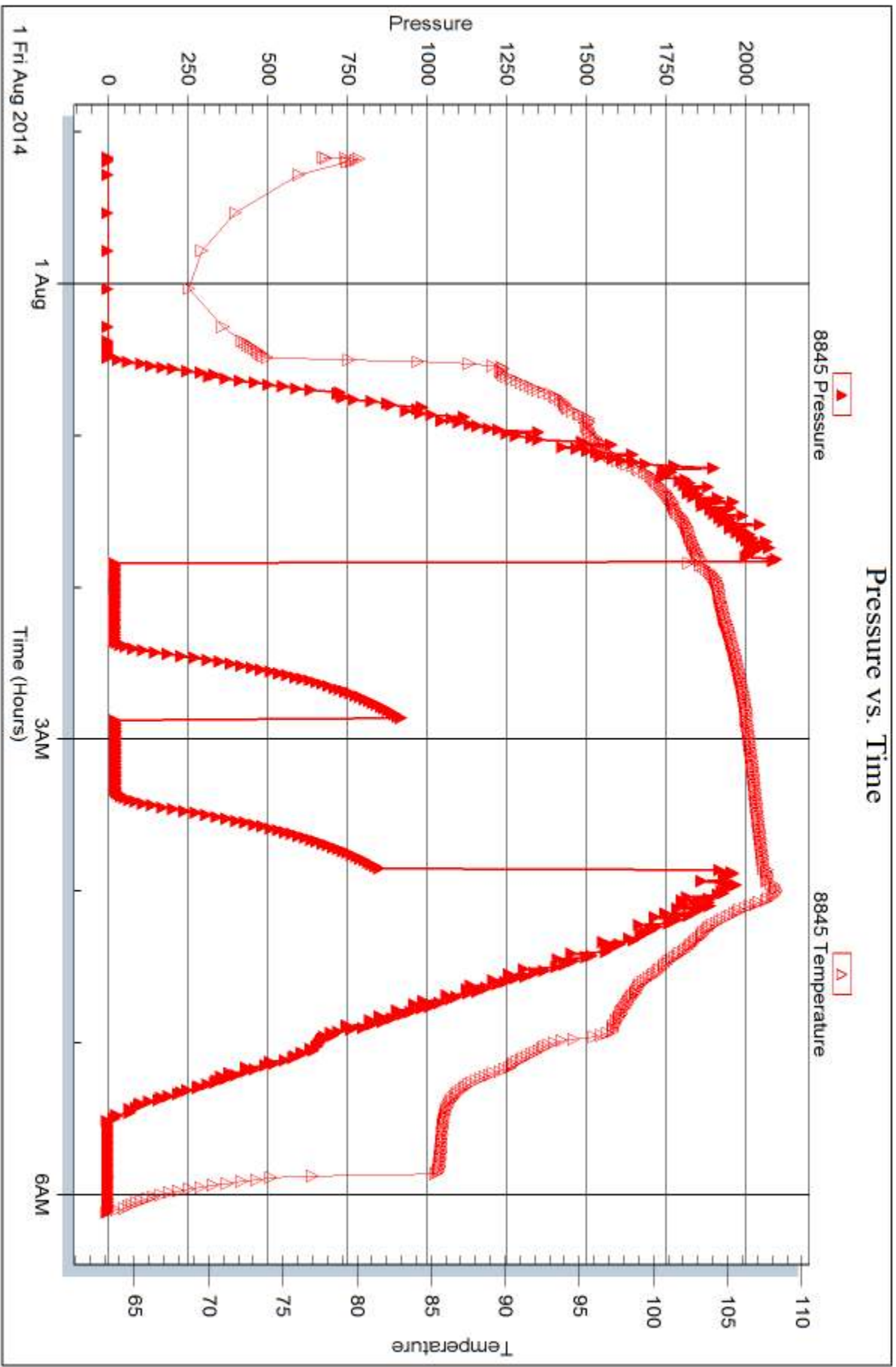
Serial #: 8845

Inside

Eagle Creek Corporation

Wilkinson #3-18

DST Test Number: 1



Trilobite Testing, Inc

Ref. No: 56667

Printed: 2014.08.05 @ 16:02:15



DRILL STEM TEST REPORT

Prepared For: **Eagle Creek Croporation**

8100 E 22nd St
North Blog. 1500
Wichita KS 67226

ATTN: Gary Gensch

Wilkinson #3-18

18-17s-34w Scott,KS

Start Date: 2014.08.02 @ 06:05:00

End Date: 2014.08.02 @ 15:40:00

Job Ticket #: 56668 DST #: 2

Trilobite Testing, Inc
1515 Commerce Parkway Hays, KS 67601
ph: 785-625-4778 fax: 785-625-5620

Printed: 2014.08.05 @ 16:01:51

Eagle Creek Croporation
18-17s-34w Scott,KS
Wilkinson #3-18
DST # 2
Maraton A-B
2014.08.02



TRILOBITE TESTING, INC

DRILL STEM TEST REPORT

Eagle Creek Croperation
 8100 E 22nd St
 North Blog. 1500
 Wichita KS 67226
 ATTN: Gary Gensch

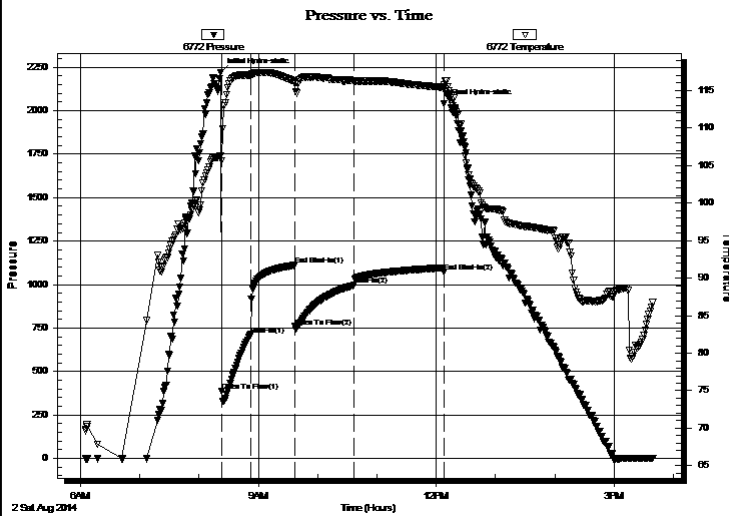
18-17s-34w Scott,KS
Wilkinson #3-18
 Job Ticket: 56668 **DST#: 2**
 Test Start: 2014.08.02 @ 06:05:00

GENERAL INFORMATION:

Formation: **Maraton A-B**
 Deviated: No Whipstock: ft (KB)
 Time Tool Opened: 08:22:45
 Time Test Ended: 15:40:00
 Interval: **4379.00 ft (KB) To 4429.00 ft (KB) (TVD)**
 Total Depth: 4429.00 ft (KB) (TVD)
 Hole Diameter: 7.88 inches Hole Condition: Poor
 Test Type: Conventional Bottom Hole (Reset)
 Tester: Justin Harris
 Unit No: 72
 Reference Elevations: 3079.00 ft (KB)
 3071.00 ft (CF)
 KB to GR/CF: 8.00 ft

Serial #: 6772 Outside
 Press@RunDepth: 996.96 psig @ 4380.00 ft (KB) Capacity: 8000.00 psig
 Start Date: 2014.08.02 End Date: 2014.08.02 Last Calib.: 2014.08.02
 Start Time: 06:05:05 End Time: 15:40:00 Time On Btm: 2014.08.02 @ 08:21:30
 Time Off Btm: 2014.08.02 @ 12:08:00

TEST COMMENT: 30: B.O.B. in 1 min.
 45: Weak Blow Build to 3".
 60: B.O.B in 1 min 10 sec.
 90: No Return



PRESSURE SUMMARY

Time (Min.)	Pressure (psig)	Temp (deg F)	Annotation
0	2220.22	106.31	Initial Hydro-static
2	388.71	105.61	Open To Flow (1)
31	712.35	117.01	Shut-In(1)
76	1111.42	116.16	End Shut-In(1)
76	758.30	115.92	Open To Flow (2)
136	996.96	116.26	Shut-In(2)
227	1074.16	115.40	End Shut-In(2)
227	2042.28	115.75	Final Hydro-static

Recovery

Length (ft)	Description	Volume (bbl)
2452.00	clean oil 30%g 70%o	34.14
189.00	gmco 30% g 30% m 40%o	2.65
0.00	GIP 315'	0.00

* Recovery from multiple tests

Gas Rates

	Choke (inches)	Pressure (psig)	Gas Rate (Mcf/d)



**TRILOBITE
TESTING, INC**

DRILL STEM TEST REPORT

Eagle Creek Corporation

18-17s-34w Scott, KS

8100 E 22nd St
North Bldg. 1500
Wichita KS 67226
ATTN: Gary Gensch

Wilkinson #3-18

Job Ticket: 56668 **DST#: 2**
Test Start: 2014.08.02 @ 06:05:00

GENERAL INFORMATION:

Formation: **Maraton A-B**

Deviated: No Whipstock: ft (KB)

Time Tool Opened: 08:22:45

Time Test Ended: 15:40:00

Test Type: Conventional Bottom Hole (Reset)

Tester: Justin Harris

Unit No: 72

Interval: 4379.00 ft (KB) To 4429.00 ft (KB) (TVD)

Total Depth: 4429.00 ft (KB) (TVD)

Hole Diameter: 7.88 inches Hole Condition: Poor

Reference Elevations: 3079.00 ft (KB)

3071.00 ft (CF)

KB to GR/CF: 8.00 ft

Serial #: 8845

Inside

Press@RunDepth: psig @ 4380.00 ft (KB)

Start Date: 2014.08.02

End Date:

2014.08.02

Start Time: 06:05:05

End Time:

15:39:30

Capacity: 8000.00 psig

Last Calib.:

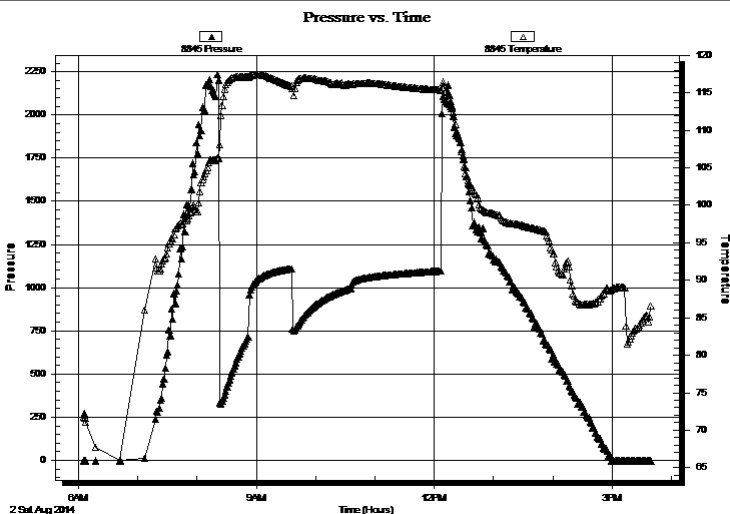
2014.08.02

Time On Btm:

Time Off Btm:

TEST COMMENT: 30: B.O.B. in 1 min.
45: Weak Blow Build to 3".
60: B.O.B in 1 min 10 sec.
90: No Return

PRESSURE SUMMARY



Time (Min.)	Pressure (psig)	Temp (deg F)	Annotation

Recovery

Length (ft)	Description	Volume (bbl)
2452.00	clean oil 30%g 70%o	34.14
189.00	gmco 30% g 30% m 40%o	2.65
0.00	GIP 315'	0.00

* Recovery from multiple tests

Gas Rates

Choke (inches)	Pressure (psig)	Gas Rate (Mcf/d)



**TRILOBITE
TESTING, INC**

DRILL STEM TEST REPORT

TOOL DIAGRAM

Eagle Creek Croporation

18-17s-34w Scott,KS

8100 E 22nd St
North Blog. 1500
Wichita KS 67226
ATTN: Gary Gensch

Wilkinson #3-18

Job Ticket: 56668

DST#: 2

Test Start: 2014.08.02 @ 06:05:00

Tool Information

Drill Pipe:	Length: 4349.50 ft	Diameter: 3.80 inches	Volume: 61.01 bbl	Tool Weight: 2500.00 lb
Heavy Wt. Pipe:	Length: ft	Diameter: inches	Volume: - bbl	Weight set on Packer: 30000.00 lb
Drill Collar:	Length: 28.50 ft	Diameter: 2.25 inches	Volume: 0.14 bbl	Weight to Pull Loose: 80000.00 lb
			<u>Total Volume: - bbl</u>	Tool Chased 0.00 ft
Drill Pipe Above KB:	27.00 ft			String Weight: Initial 68000.00 lb
Depth to Top Packer:	4379.00 ft			Final 78000.00 lb
Depth to Bottom Packer:	ft			
Interval between Packers:	50.00 ft			
Tool Length:	78.00 ft			
Number of Packers:	2	Diameter: 6.75 inches		

Tool Comments:

Tool Description	Length (ft)	Serial No.	Position	Depth (ft)	Accum. Lengths
------------------	-------------	------------	----------	------------	----------------

Change Over Sub	1.00			4352.00	
Shut In Tool	5.00			4357.00	
Hydraulic tool	5.00			4362.00	
Jars	5.00			4367.00	
Safety Joint	3.00			4370.00	
Packer	5.00			4375.00	28.00 Bottom Of Top Packer
Packer	4.00			4379.00	
Stubb	1.00			4380.00	
Recorder	0.00	6772	Outside	4380.00	
Recorder	0.00	8845	Inside	4380.00	
Perforations	11.00			4391.00	
Change Over Sub	1.00			4392.00	
Drill Pipe	31.00			4423.00	
Change Over Sub	1.00			4424.00	
Bullnose	5.00			4429.00	50.00 Bottom Packers & Anchor

Total Tool Length: 78.00



**TRILOBITE
TESTING, INC**

DRILL STEM TEST REPORT

FLUID SUMMARY

Eagle Creek Croporation

18-17s-34w Scott,KS

8100 E 22nd St
North Blog. 1500
Wichita KS 67226
ATTN: Gary Gensch

Wilkinson #3-18

Job Ticket: 56668

DST#: 2

Test Start: 2014.08.02 @ 06:05:00

Mud and Cushion Information

Mud Type: Gel Chem
Mud Weight: 9.00 lb/gal
Viscosity: 50.00 sec/qt
Water Loss: 9.58 in³
Resistivity: ohm.m
Salinity: 9300.00 ppm
Filter Cake: 1.00 inches

Cushion Type:
Cushion Length: ft
Cushion Volume: bbl
Gas Cushion Type:
Gas Cushion Pressure: psig

Oil API: 27 deg API
Water Salinity: 0 ppm

Recovery Information

Recovery Table

Length ft	Description	Volume bbl
2452.00	clean oil 30%g 70%o	34.135
189.00	gmco 30% g 30% m 40%o	2.651
0.00	GIP 315'	0.000

Total Length: 2641.00 ft Total Volume: 36.786 bbl

Num Fluid Samples: 0

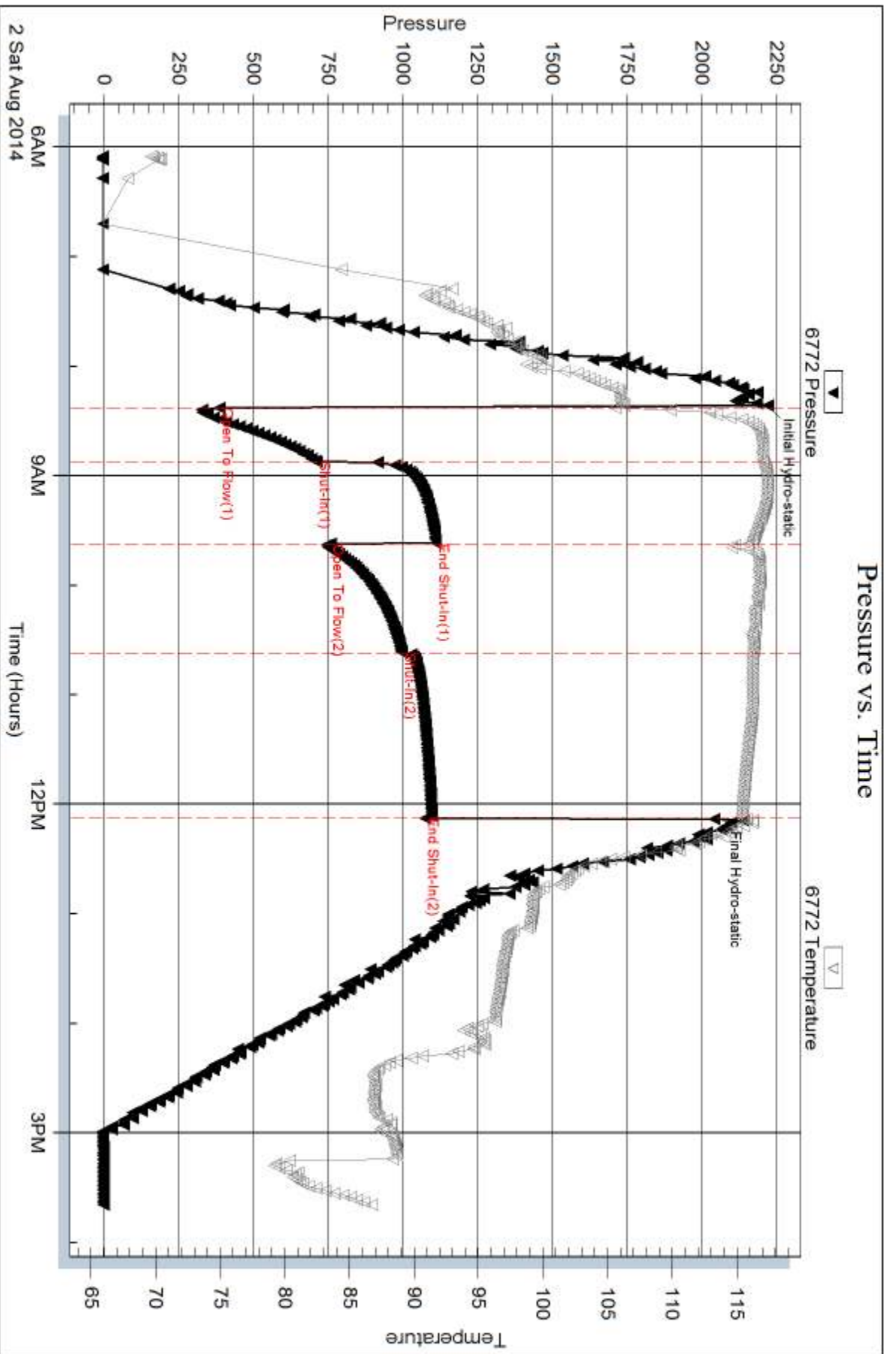
Num Gas Bombs: 0

Serial #:

Laboratory Name:

Laboratory Location:

Recovery Comments:



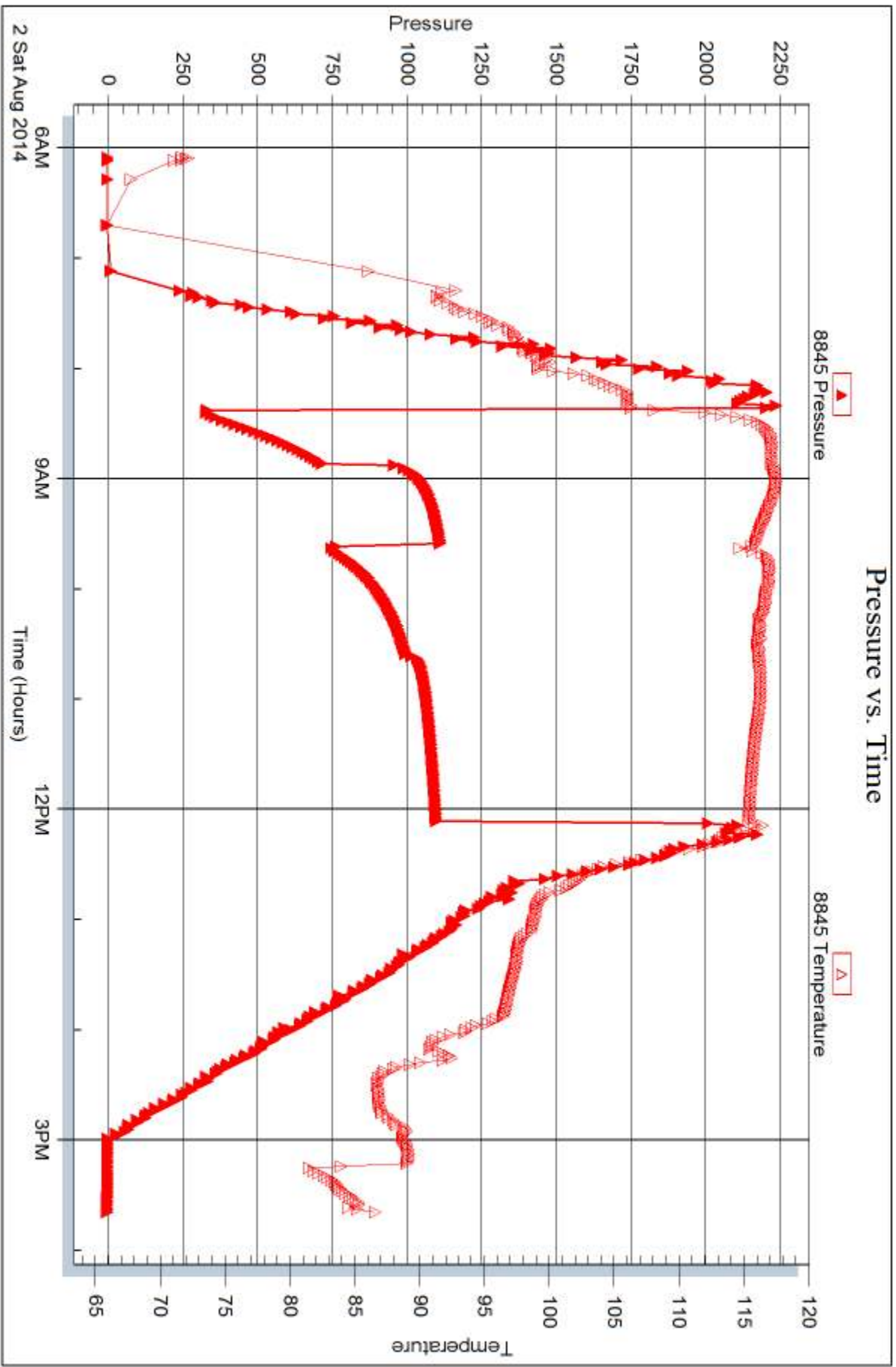
Serial #: 8845

Inside

Eagle Creek Corporation

Wilkinson #3-18

DST Test Number: 2





DRILL STEM TEST REPORT

Prepared For: **Eagle Creek Croporation**

8100 E 22nd St
North Blog. 1500
Wichita KS 67226

ATTN: Gary Gensch

Wilkinson #3-18

18-17s-34w Scott,KS

Start Date: 2014.08.02 @ 23:40:00

End Date: 2014.08.03 @ 06:31:30

Job Ticket #: 56669 DST #: 3

Trilobite Testing, Inc
1515 Commerce Parkway Hays, KS 67601
ph: 785-625-4778 fax: 785-625-5620

Printed: 2014.08.05 @ 15:47:14



TRILOBITE TESTING, INC

DRILL STEM TEST REPORT

Eagle Creek Croporation

18-17s-34w Scott,KS

8100 E 22nd St
North Bldg. 1500
Wichita KS 67226
ATTN: Gary Gensch

Wilkinson #3-18

Job Ticket: 56669

DST#: 3

Test Start: 2014.08.02 @ 23:40:00

GENERAL INFORMATION:

Formation: **Marmaton C**

Deviated: No Whipstock: ft (KB)

Time Tool Opened: 02:23:15

Time Test Ended: 06:31:30

Test Type: Conventional Bottom Hole (Reset)

Tester: Justin Harris

Unit No: 72

Interval: 4431.00 ft (KB) To 4447.00 ft (KB) (TVD)

Reference Elevations: 3079.00 ft (KB)

Total Depth: 4447.00 ft (KB) (TVD)

3071.00 ft (CF)

Hole Diameter: 7.88 inches Hole Condition: Poor

KB to GR/CF: 8.00 ft

Serial #: 6772 Outside

Press@RunDepth: 21.37 psig @ 4432.00 ft (KB)

Capacity: 8000.00 psig

Start Date: 2014.08.02

End Date:

2014.08.03

Last Calib.: 2014.08.03

Start Time: 23:40:05

End Time:

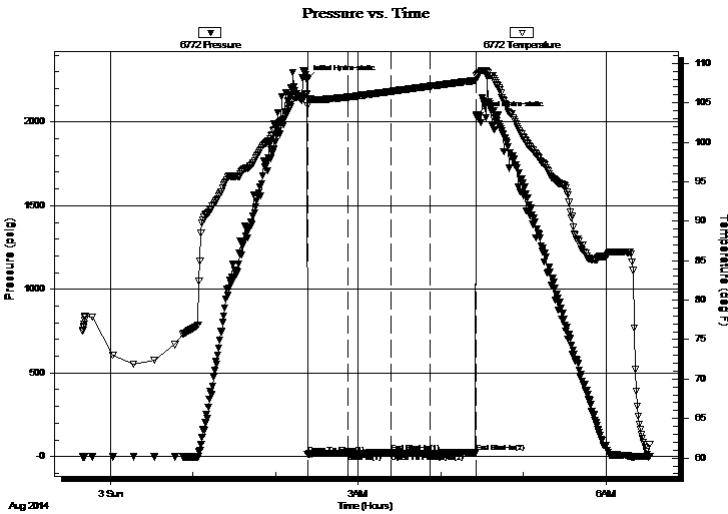
06:31:29

Time On Btm: 2014.08.03 @ 02:23:00

Time Off Btm: 2014.08.03 @ 04:25:45

TEST COMMENT: 30: Weak Surface Blow died in 5 min.
30: No Return.
30: No Blow .
30: No Return.

PRESSURE SUMMARY



Time (Min.)	Pressure (psig)	Temp (deg F)	Annotation
0	2252.20	106.13	Initial Hydro-static
1	14.69	104.67	Open To Flow (1)
30	19.90	105.72	Shut-In(1)
61	23.12	106.43	End Shut-In(1)
61	19.90	106.44	Open To Flow (2)
89	21.37	107.10	Shut-In(2)
123	24.70	107.82	End Shut-In(2)
123	2039.23	108.45	Final Hydro-static

Recovery

Length (ft)	Description	Volume (bbl)
5.00	mud w ith oil spots	0.02

* Recovery from multiple tests

Gas Rates

Choke (inches)	Pressure (psig)	Gas Rate (Mcf/d)



DRILL STEM TEST REPORT

Eagle Creek Corporation

18-17s-34w Scott,KS

8100 E 22nd St
North Blog. 1500
Wichita KS 67226
ATTN: Gary Gensch

Wilkinson #3-18

Job Ticket: 56669

DST#: 3

Test Start: 2014.08.02 @ 23:40:00

GENERAL INFORMATION:

Formation: **Marmaton C**

Deviated: No Whipstock: ft (KB)

Time Tool Opened: 02:23:15

Time Test Ended: 06:31:30

Test Type: Conventional Bottom Hole (Reset)

Tester: Justin Harris

Unit No: 72

Interval: **4431.00 ft (KB) To 4447.00 ft (KB) (TVD)**

Reference Elevations: 3079.00 ft (KB)

Total Depth: 4447.00 ft (KB) (TVD)

3071.00 ft (CF)

Hole Diameter: 7.88 inches Hole Condition: Poor

KB to GR/CF: 8.00 ft

Serial #: 8845 Outside

Press@RunDepth: psig @ 4432.00 ft (KB)

Capacity: 8000.00 psig

Start Date: 2014.08.02

End Date: 2014.08.03

Last Calib.: 2014.08.03

Start Time: 23:40:05

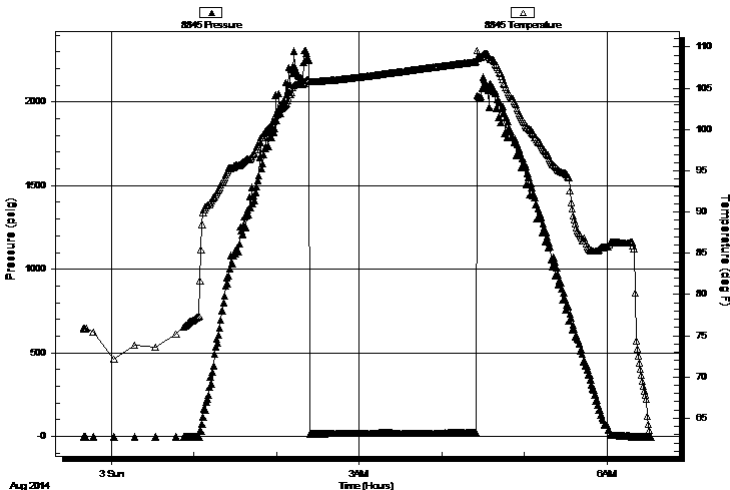
End Time: 06:31:44

Time On Btm:

Time Off Btm:

TEST COMMENT: 30: Weak Surface Blow died in 5 min.
30: No Return.
30: No Blow .
30: No Return.

Pressure vs. Time



PRESSURE SUMMARY

Time (Min.)	Pressure (psig)	Temp (deg F)	Annotation

Recovery

Length (ft)	Description	Volume (bbl)
5.00	mud w ith oil spots	0.02

Gas Rates

	Choke (inches)	Pressure (psig)	Gas Rate (Mcf/d)

* Recovery from multiple tests



**TRILOBITE
TESTING, INC**

DRILL STEM TEST REPORT

TOOL DIAGRAM

Eagle Creek Croporation

18-17s-34w Scott,KS

8100 E 22nd St
North Blog. 1500
Wichita KS 67226
ATTN: Gary Gensch

Wilkinson #3-18

Job Ticket: 56669

DST#: 3

Test Start: 2014.08.02 @ 23:40:00

Tool Information

Drill Pipe:	Length: 4380.50 ft	Diameter: 3.80 inches	Volume: 61.45 bbl	Tool Weight: 2500.00 lb
Heavy Wt. Pipe:	Length: 0.00 ft	Diameter: inches	Volume: 0.00 bbl	Weight set on Packer: 30000.00 lb
Drill Collar:	Length: 28.50 ft	Diameter: 2.25 inches	Volume: 0.14 bbl	Weight to Pull Loose: 75000.00 lb
			<u>Total Volume: 61.59 bbl</u>	Tool Chased 0.00 ft
Drill Pipe Above KB:	6.00 ft			String Weight: Initial 65000.00 lb
Depth to Top Packer:	4431.00 ft			Final 66000.00 lb
Depth to Bottom Packer:	ft			
Interval between Packers:	16.00 ft			
Tool Length:	44.00 ft			
Number of Packers:	2	Diameter: 6.75 inches		

Tool Comments:

Tool Description	Length (ft)	Serial No.	Position	Depth (ft)	Accum. Lengths
------------------	-------------	------------	----------	------------	----------------

Change Over Sub	1.00			4404.00	
Shut In Tool	5.00			4409.00	
Hydraulic tool	5.00			4414.00	
Jars	5.00			4419.00	
Safety Joint	3.00			4422.00	
Packer	5.00			4427.00	28.00 Bottom Of Top Packer
Packer	4.00			4431.00	
Stubb	1.00			4432.00	
Recorder	0.00	6772	Outside	4432.00	
Recorder	0.00	8845	Outside	4432.00	
Perforations	10.00			4442.00	
Bullnose	5.00			4447.00	16.00 Bottom Packers & Anchor

Total Tool Length: 44.00



**TRILOBITE
TESTING, INC**

DRILL STEM TEST REPORT

FLUID SUMMARY

Eagle Creek Croporation

18-17s-34w Scott,KS

8100 E 22nd St
North Blog. 1500
Wichita KS 67226
ATTN: Gary Gensch

Wilkinson #3-18

Job Ticket: 56669

DST#: 3

Test Start: 2014.08.02 @ 23:40:00

Mud and Cushion Information

Mud Type: Gel Chem

Cushion Type:

Oil API:

0 deg API

Mud Weight: 9.00 lb/gal

Cushion Length:

ft

Water Salinity:

0 ppm

Viscosity: 50.00 sec/qt

Cushion Volume:

bbbl

Water Loss: 9.58 in³

Gas Cushion Type:

Resistivity: ohm.m

Gas Cushion Pressure:

psig

Salinity: 9300.00 ppm

Filter Cake: 1.00 inches

Recovery Information

Recovery Table

Length ft	Description	Volume bbl
5.00	mud w ith oil spots	0.025

Total Length: 5.00 ft Total Volume: 0.025 bbl

Num Fluid Samples: 0

Num Gas Bombs: 0

Serial #:

Laboratory Name:

Laboratory Location:

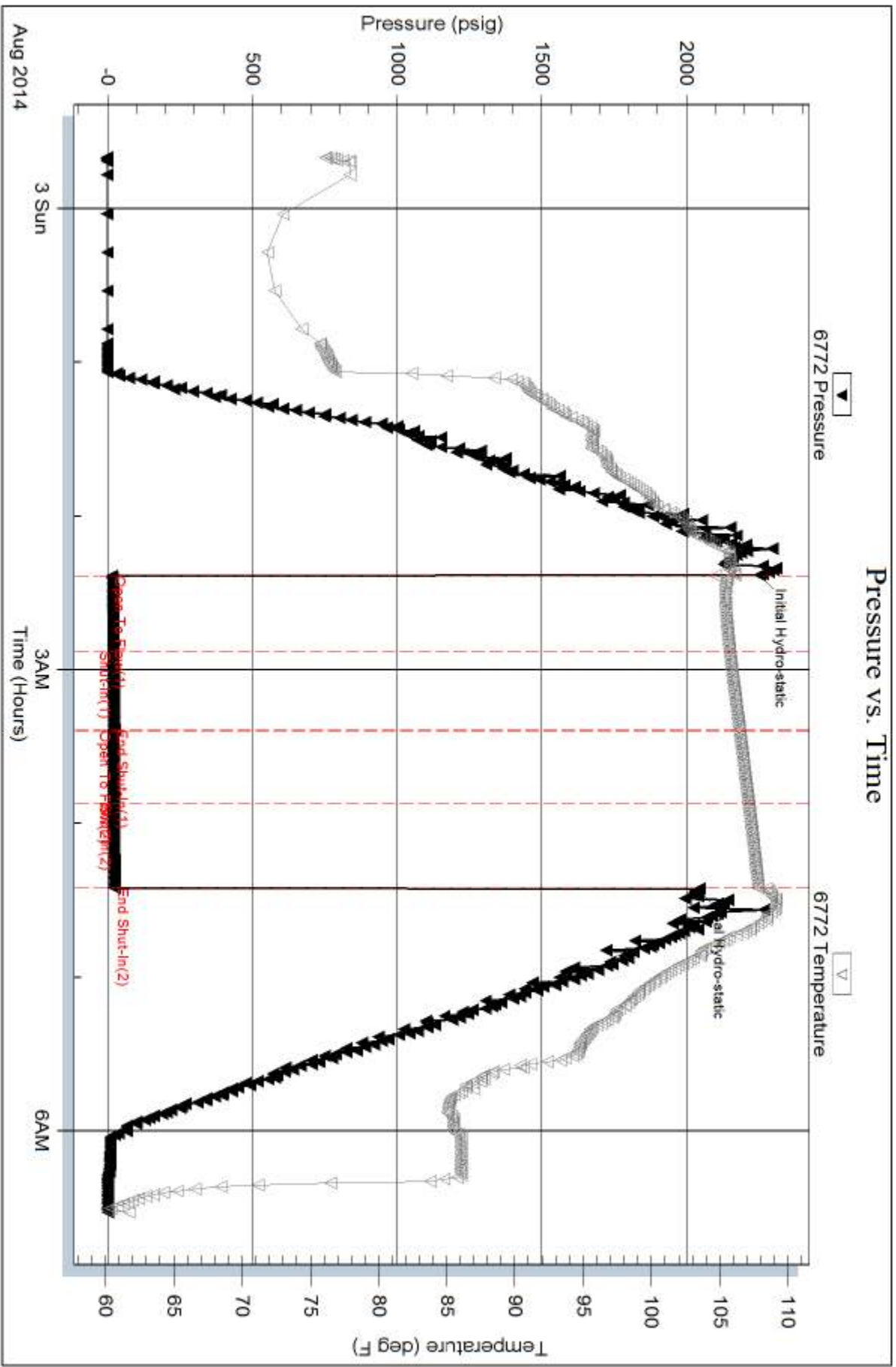
Recovery Comments:

Serial #: 6772

Outside Eagle Creek Corporation

Wilkinson #3-18

DST Test Number: 3

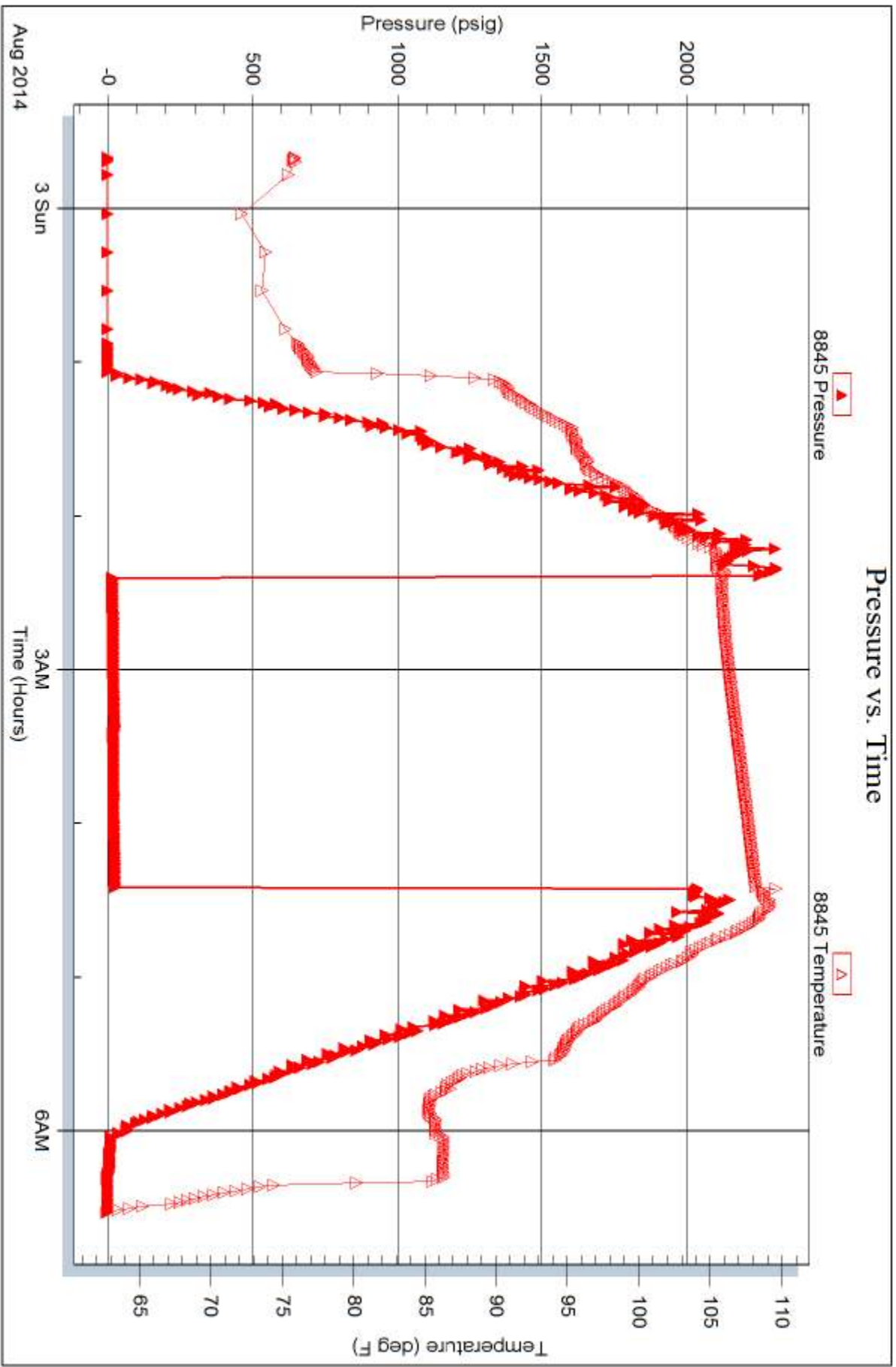


Serial #: 8845

Outside Eagle Creek Corporation

Wilkinson #3-18

DST Test Number: 3



Trilobite Testing, Inc

Ref. No: 56669

Printed: 2014.08.05 @ 15:47:16



DRILL STEM TEST REPORT

Prepared For: **Eagle Creek Croporation**

8100 E 22nd St
North Blog. 1500
Wichita KS 67226

ATTN: Gary Gensch

Wilkinson #3-18

18-17s-34w Scott,KS

Start Date: 2014.08.03 @ 15:30:00

End Date: 2014.08.04 @ 00:22:30

Job Ticket #: 59583 DST #: 4

Trilobite Testing, Inc
1515 Commerce Parkway Hays, KS 67601
ph: 785-625-4778 fax: 785-625-5620

Printed: 2014.08.05 @ 16:01:14

Eagle Creek Croporation

18-17s-34w Scott,KS

Wilkinson #3-18

DST # 4

Marmaton " D "

2014.08.03



**TRILOBITE
TESTING, INC**

DRILL STEM TEST REPORT

Eagle Creek Croperation

18-17s-34w Scott,KS

8100 E 22nd St
North Blog. 1500
Wichita KS 67226
ATTN: Gary Gensch

Wilkinson #3-18

Job Ticket: 59583

DST#: 4

Test Start: 2014.08.03 @ 15:30:00

GENERAL INFORMATION:

Formation: **Marmaton " D "**

Deviated: No Whipstock: ft (KB)

Time Tool Opened: 17:34:15

Time Test Ended: 00:22:30

Test Type: Conventional Bottom Hole (Reset)

Tester: Samuel Esparza

Unit No: 72

Interval: 4449.00 ft (KB) To 4464.00 ft (KB) (TVD)

Reference Elevations: 3079.00 ft (KB)

Total Depth: 4464.00 ft (KB) (TVD)

3071.00 ft (CF)

Hole Diameter: 7.88 inches Hole Condition: Good

KB to GR/CF: 8.00 ft

Serial #: 8845 Outside

Press@RunDepth: 242.54 psig @ 4450.00 ft (KB)

Capacity: 8000.00 psig

Start Date: 2014.08.03

End Date:

2014.08.04

Last Calib.:

2014.08.04

Start Time: 15:30:05

End Time:

00:22:30

Time On Btm:

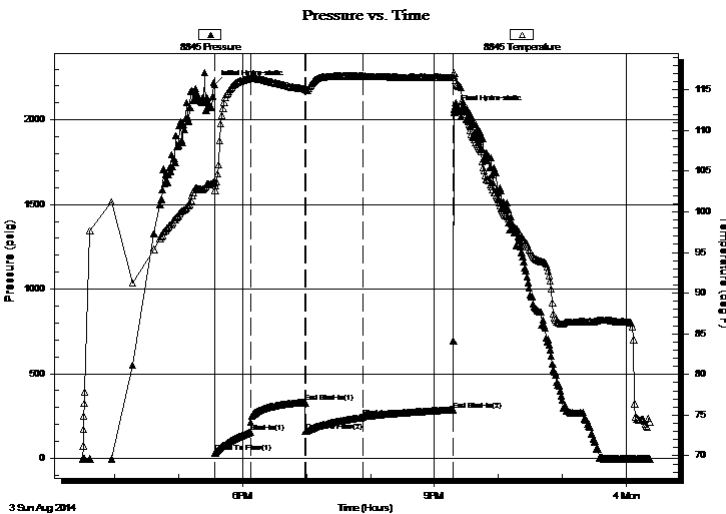
2014.08.03 @ 17:34:00

Time Off Btm:

2014.08.03 @ 21:18:15

TEST COMMENT: IF: BOB @ 10 min.
IS: No Return.
FF: BOB @ 34 min.
FS: 5 1/4" Return.

PRESSURE SUMMARY



Time (Min.)	Pressure (psig)	Temp (deg F)	Annotation
0	2209.90	103.65	Initial Hydro-static
1	32.98	102.65	Open To Flow (1)
34	153.80	116.39	Shut-In(1)
85	332.36	115.14	End Shut-In(1)
85	158.40	115.08	Open To Flow (2)
139	242.54	116.68	Shut-In(2)
224	287.49	116.50	End Shut-In(2)
225	2061.20	117.15	Final Hydro-static

Recovery

Length (ft)	Description	Volume (bbl)
605.00	GOMCW 5g 50 5m 85w	8.21
10.00	Clean Oil 100o	0.14

Gas Rates

	Choke (inches)	Pressure (psig)	Gas Rate (Mcf/d)

* Recovery from multiple tests



TRILOBITE TESTING, INC

DRILL STEM TEST REPORT

Eagle Creek Croporation
 8100 E 22nd St
 North Blog. 1500
 Wichita KS 67226
 ATTN: Gary Gensch

18-17s-34w Scott,KS

Wilkinson #3-18

Job Ticket: 59583

DST#: 4

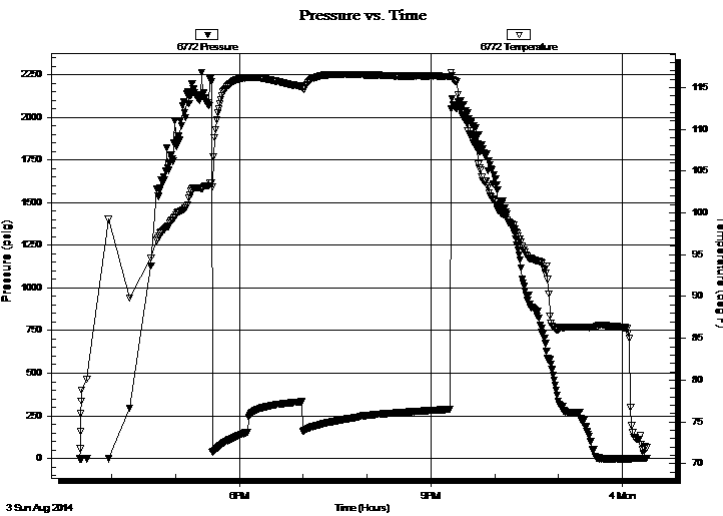
Test Start: 2014.08.03 @ 15:30:00

GENERAL INFORMATION:

Formation: **Marmaton " D "**
 Deviated: No Whipstock: ft (KB) Test Type: Conventional Bottom Hole (Reset)
 Time Tool Opened: 17:34:15 Tester: Samuel Esparza
 Time Test Ended: 00:22:30 Unit No: 72
 Interval: **4449.00 ft (KB) To 4464.00 ft (KB) (TVD)** Reference Elevations: 3079.00 ft (KB)
 Total Depth: 4464.00 ft (KB) (TVD) 3071.00 ft (CF)
 Hole Diameter: 7.88 inches Hole Condition: Good KB to GR/CF: 8.00 ft

Serial #: 6772 Outside
 Press@RunDepth: psig @ 4450.00 ft (KB) Capacity: 8000.00 psig
 Start Date: 2014.08.03 End Date: 2014.08.04 Last Calib.: 2014.08.04
 Start Time: 15:30:05 End Time: 00:22:45 Time On Btm:
 Time Off Btm:

TEST COMMENT: IF: BOB @ 10 min.
 IS: No Return.
 FF: BOB @ 34 min.
 FS: 5 1/4" Return.



PRESSURE SUMMARY

Time (Min.)	Pressure (psig)	Temp (deg F)	Annotation

Recovery

Length (ft)	Description	Volume (bbl)
605.00	GOMCW 5g 50 5m 85w	8.21
10.00	Clean Oil 100o	0.14

Gas Rates

	Choke (inches)	Pressure (psig)	Gas Rate (Mcf/d)

* Recovery from multiple tests



**TRILOBITE
TESTING, INC**

DRILL STEM TEST REPORT

TOOL DIAGRAM

Eagle Creek Croporation

18-17s-34w Scott,KS

8100 E 22nd St
North Blog. 1500
Wichita KS 67226
ATTN: Gary Gensch

Wilkinson #3-18

Job Ticket: 59583

DST#: 4

Test Start: 2014.08.03 @ 15:30:00

Tool Information

Drill Pipe:	Length: 4410.00 ft	Diameter: 3.80 inches	Volume: 61.86 bbl	Tool Weight: 2500.00 lb
Heavy Wt. Pipe:	Length: 0.00 ft	Diameter: 0.00 inches	Volume: 0.00 bbl	Weight set on Packer: 30000.00 lb
Drill Collar:	Length: 30.00 ft	Diameter: 2.25 inches	Volume: 0.15 bbl	Weight to Pull Loose: 90000.00 lb
			<u>Total Volume: 62.01 bbl</u>	Tool Chased 0.00 ft
Drill Pipe Above KB:	19.00 ft			String Weight: Initial 68000.00 lb
Depth to Top Packer:	4449.00 ft			Final 72000.00 lb
Depth to Bottom Packer:	ft			
Interval between Packers:	15.00 ft			
Tool Length:	43.00 ft			
Number of Packers:	2	Diameter: 6.75 inches		

Tool Comments:

Tool Description

Tool Description	Length (ft)	Serial No.	Position	Depth (ft)	Accum. Lengths
Change Over Sub	1.00			4422.00	
Shut In Tool	5.00			4427.00	
Hydraulic tool	5.00			4432.00	
Jars	5.00			4437.00	
Safety Joint	3.00			4440.00	
Packer	5.00			4445.00	28.00 Bottom Of Top Packer
Packer	4.00			4449.00	
Stubb	1.00			4450.00	
Recorder	0.00	6772	Outside	4450.00	
Recorder	0.00	8845	Outside	4450.00	
Perforations	9.00			4459.00	
Bullnose	5.00			4464.00	15.00 Bottom Packers & Anchor

Total Tool Length: 43.00



**TRILOBITE
TESTING, INC**

DRILL STEM TEST REPORT

FLUID SUMMARY

Eagle Creek Croporation

18-17s-34w Scott,KS

8100 E 22nd St
North Blog. 1500
Wichita KS 67226
ATTN: Gary Gensch

Wilkinson #3-18

Job Ticket: 59583

DST#: 4

Test Start: 2014.08.03 @ 15:30:00

Mud and Cushion Information

Mud Type: Gel Chem

Cushion Type:

Oil API:

21 deg API

Mud Weight: 9.00 lb/gal

Cushion Length:

ft

Water Salinity:

40000 ppm

Viscosity: 78.00 sec/qt

Cushion Volume:

bbbl

Water Loss: 10.39 in³

Gas Cushion Type:

Resistivity: 0.00 ohm.m

Gas Cushion Pressure:

psig

Salinity: 11000.00 ppm

Filter Cake: 1.00 inches

Recovery Information

Recovery Table

Length ft	Description	Volume bbl
605.00	GOMCW 5g 50 5m 85w	8.213
10.00	Clean Oil 100o	0.140

Total Length: 615.00 ft Total Volume: 8.353 bbl

Num Fluid Samples: 0

Num Gas Bombs: 0

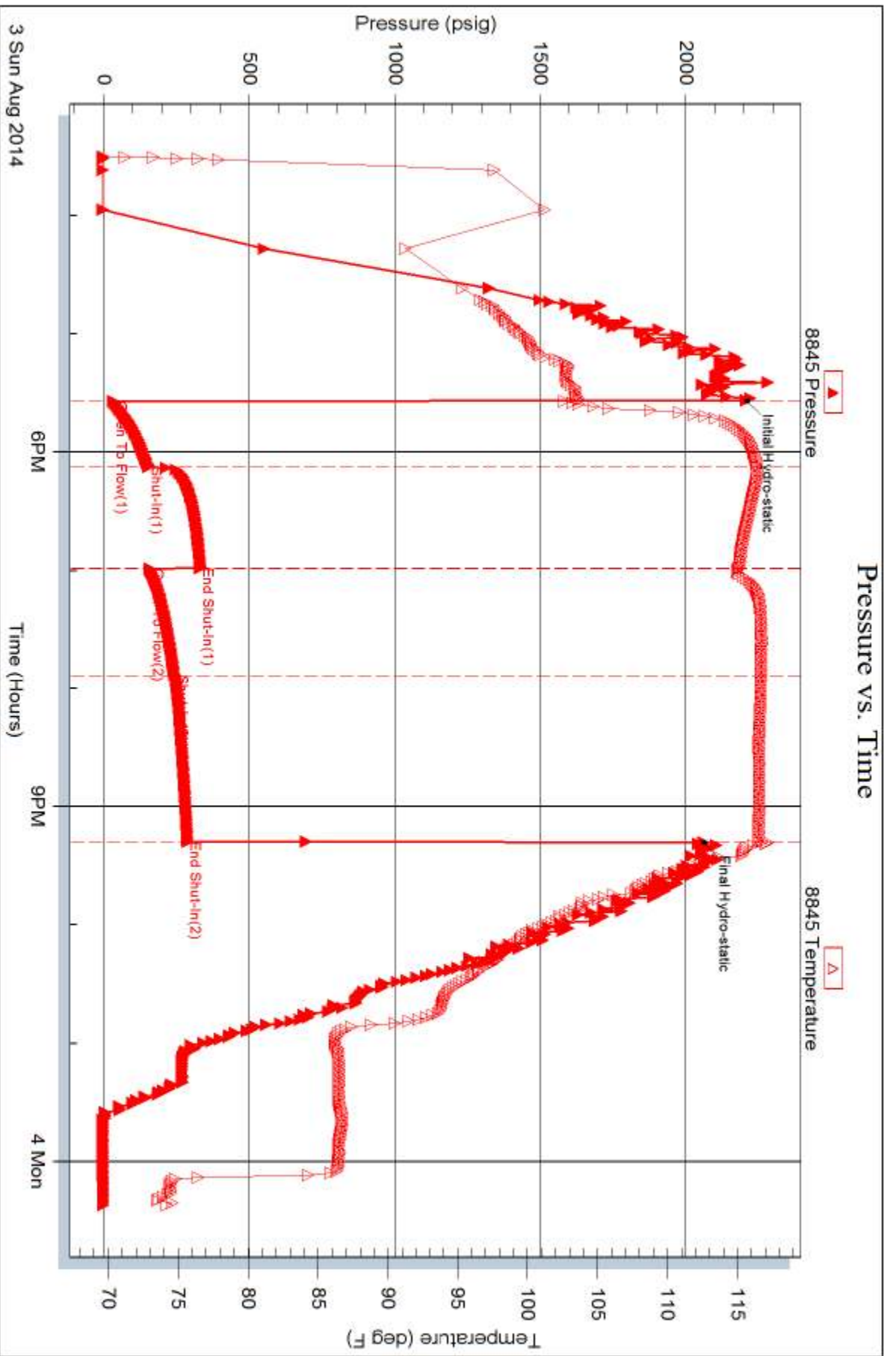
Serial #:

Laboratory Name:

Laboratory Location:

Recovery Comments: Oil API: 23 @ 80degrees= 21 deg API

Water Salinity: .174 @ 72 degrees= 40,000 ppm

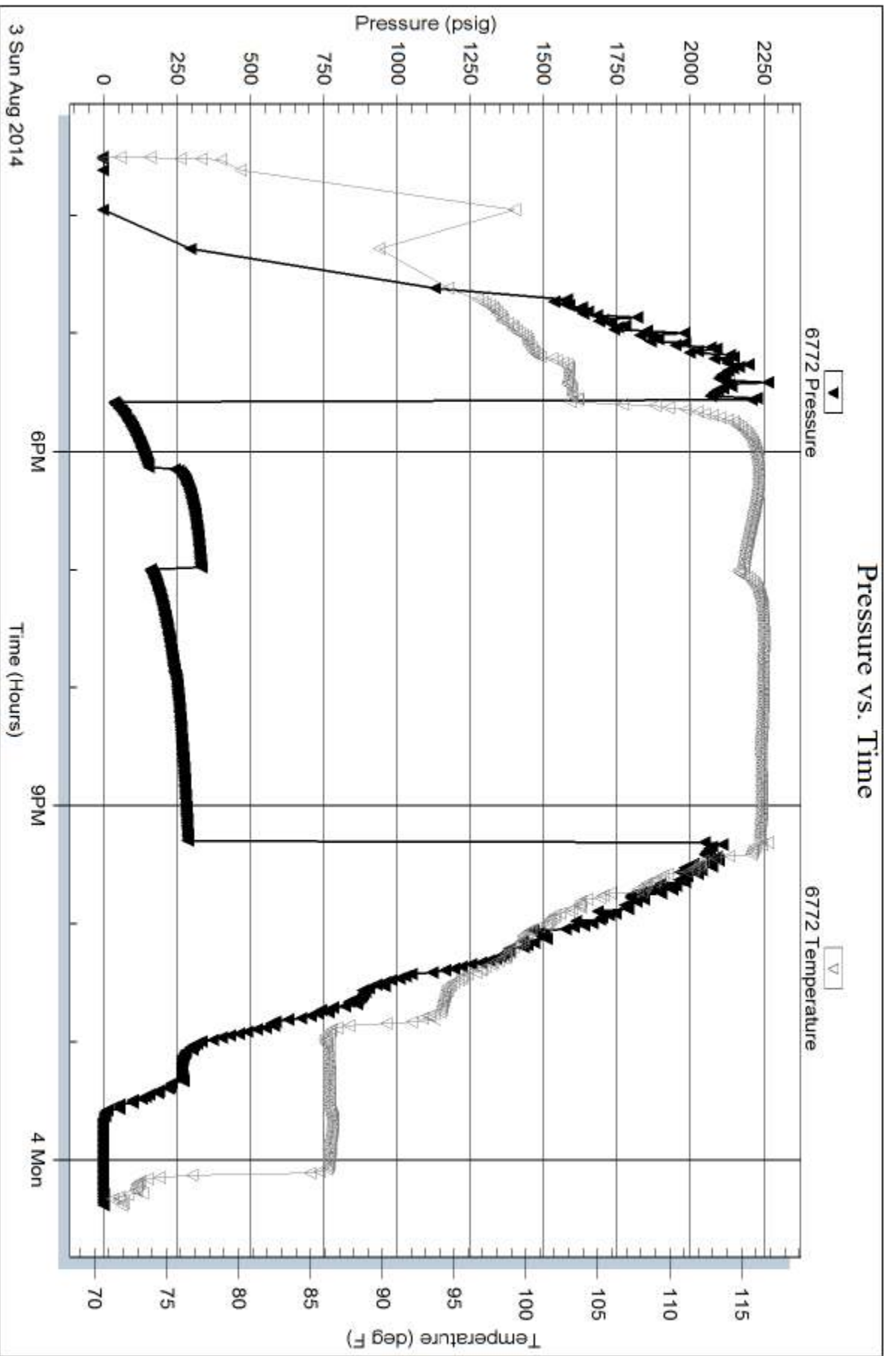


Serial #: 6772

Outside Eagle Creek Corporation

Wilkinson #3-18

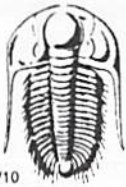
DST Test Number: 4



Trilobite Testing, Inc

Ref. No: 59583

Printed: 2014.08.05 @ 16:01:18



TRILOBITE TESTING INC.

1515 Commerce Parkway • Hays, Kansas 67601

Test Ticket

NO. 56667

4/10

Well Name & No. Wilkinson 3-18 Test No. 1 Date 7-31-14
 Company Eagle Creek Corporation Elevation 3079 KB 3071 GL
 Address 8100 E22nd ST North Bldg. 1500 Wichita KS 67226
 Co. Rep / Geo. Gary Gensch Rig Val #4
 Location: Sec. 18 Twp. 17s Rge. 34W Co. Scott State KS

Interval Tested 4194 4234 Zone Tested Kansas City I
 Anchor Length 38 Drill Pipe Run 4162.5 Mud Wt. 9.1
 Top Packer Depth 4191 Drill Collars Run 28.5 Vis 59
 Bottom Packer Depth 4194 Wt. Pipe Run Ø WL 10.4
 Total Depth 4234 Chlorides 4000 ppm System LCM 2
 Blow Description 30 Weak surface Blow Piped in 20 min
30 No Return
30 No Blow
30 No Return

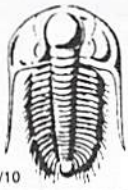
Rec	Feet of	%gas	%oil	%water	%mud
<u>5</u>	<u>mud</u>				<u>100%</u>
Rec	Feet of	%gas	%oil	%water	%mud
Rec	Feet of	%gas	%oil	%water	%mud
Rec	Feet of	%gas	%oil	%water	%mud
Rec	Feet of	%gas	%oil	%water	%mud

Rec Total 5 BHT 107 Gravity — API RW — @ — ° F Chlorides — ppm

(A) Initial Hydrostatic <u>2078</u>	<input checked="" type="checkbox"/> Test <u>1250</u>	T-On Location <u>20:25</u>
(B) First Initial Flow <u>18</u>	<input checked="" type="checkbox"/> Jars <u>250</u>	T-Started <u>23 10</u>
(C) First Final Flow <u>21</u>	<input checked="" type="checkbox"/> Safety Joint <u>75</u>	T-Open <u>1:50</u>
(D) Initial Shut-In <u>919</u>	<input checked="" type="checkbox"/> Circ Sub <u>N/C</u>	T-Pulled <u>3:50</u>
(E) Second Initial Flow <u>22</u>	<input type="checkbox"/> Hourly Standby	T-Out <u>6:07</u>
(F) Second Final Flow <u>24</u>	<input checked="" type="checkbox"/> Mileage <u>44 RT</u> 68.20	Comments
(G) Final Shut-In <u>813</u>	<input type="checkbox"/> Sampler	
(H) Final Hydrostatic <u>1934</u>	<input type="checkbox"/> Straddle	<input type="checkbox"/> Ruined Shale Packer
	<input type="checkbox"/> Shale Packer	<input type="checkbox"/> Ruined Packer
Initial Open <u>30</u>	<input type="checkbox"/> Extra Packer	<input type="checkbox"/> Extra Copies
Initial Shut-In <u>30</u>	<input type="checkbox"/> Extra Recorder	Sub Total <u>0</u>
Final Flow <u>30</u>	<input type="checkbox"/> Day Standby	Total <u>1793.20</u>
Final Shut-In <u>30</u>	<input checked="" type="checkbox"/> Accessibility <u>150</u>	MP/DST Disc't
	Sub Total <u>1793.20</u>	

Approved By Gary Gensch Our Representative Justin H.

Trilobite Testing Inc. shall not be liable for damaged of any kind of the property or personnel of the one for whom a test is made, or for any loss suffered or sustained, directly or indirectly, through the use of its equipment, or its statements or opinion concerning the results of any test, tools lost or damaged in the hole shall be paid for at cost by the party for whom the test is made.



TRILOBITE TESTING INC.

1515 Commerce Parkway • Hays, Kansas 67601

Test Ticket

NO. 56668

Well Name & No. Wilkinson 3-18 Test No. 2 Date 7-2-14
 Company Eagle Creek Corporation Elevation 3079 KB 3071 GL
 Address 8100 E 22nd St North Bldg. 1500 Wichita KS 67226
 Co. Rep / Geo. Gary Gensch Rig Val #4
 Location: Sec. 18 Twp. 17S Rge. 34W Co. Scott State Ks

Interval Tested 4379 4429 Zone Tested Marmaton A/B
 Anchor Length 50 Drill Pipe Run 4349.5 Mud Wt. 9.2
 Top Packer Depth 4374 Drill Collars Run 28.5 Vis 50
 Bottom Packer Depth 4379 Wt. Pipe Run Ø WL 9.6
 Total Depth 4429 Chlorides 9300 ppm System LCM 1#
 Blow Description 30 B.O.B in 1min
45 Weak Blow Build to
40 B.O.B in 1min ~~10~~ 10 sec
90 No Return

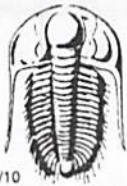
Rec	Feet of	%gas	%oil	%water	%mud
<u>2452</u>	<u>clean oil</u>	<u>30</u>	<u>70</u>		
<u>189</u>	<u>gmsco</u>	<u>30</u>	<u>40</u>		<u>30</u>
	<u>GIP 315'</u>				

Rec Total 2641 BHT 115 Gravity 27 at 60° API RW - @ - °F Chlorides - ppm

(A) Initial Hydrostatic <u>2220</u>	<input checked="" type="checkbox"/> Test <u>1250</u>	T-On Location <u>05:15</u>
(B) First Initial Flow <u>389</u>	<input checked="" type="checkbox"/> Jars <u>250</u>	T-Started <u>06:05</u>
(C) First Final Flow <u>712</u>	<input checked="" type="checkbox"/> Safety Joint <u>75</u>	T-Open <u>08:19</u>
(D) Initial Shut-In <u>1111</u>	<input checked="" type="checkbox"/> Circ Sub <u>N/C</u>	T-Pulled <u>12:04</u>
(E) Second Initial Flow <u>758</u>	<input type="checkbox"/> Hourly Standby	T-Out <u>15:30</u>
(F) Second Final Flow <u>997</u>	<input checked="" type="checkbox"/> Mileage <u>44RT</u> <u>68.20</u>	Comments
(G) Final Shut-In <u>1074</u>	<input type="checkbox"/> Sampler	
(H) Final Hydrostatic <u>2042</u>	<input type="checkbox"/> Straddle	<input type="checkbox"/> Ruined Shale Packer
Initial Open <u>30</u>	<input type="checkbox"/> Shale Packer	<input type="checkbox"/> Ruined Packer
Initial Shut-In <u>45</u>	<input type="checkbox"/> Extra Packer	<input type="checkbox"/> Extra Copies
Final Flow <u>60</u>	<input type="checkbox"/> Extra Recorder	Sub Total <u>0</u>
Final Shut-In <u>90</u>	<input type="checkbox"/> Day Standby	Total <u>1793.20</u>
	<input checked="" type="checkbox"/> Accessibility <u>150</u>	MP/DST Disc't
	Sub Total <u>1793.20</u>	

Approved By Gary Gensch Our Representative [Signature]

Trilobite Testing Inc. shall not be liable for damaged of any kind of the property or personnel of the one for whom a test is made, or for any loss suffered or sustained, directly or indirectly, through the use of its equipment, or its statements or opinion concerning the results of any test, tools lost or damaged in the hole shall be paid for at cost by the party for whom the test is made.



TRILOBITE TESTING INC.

1515 Commerce Parkway • Hays, Kansas 67601

Test Ticket

NO. 56669

Well Name & No. Wilkinson 3-18 Test No. 3 Date 7-2-14
 Company Eagle creek Corporation Elevation 3079 KB 3071 GL
 Address 8100 E 22nd ST North Bldg. 1500 Wichita Ks 67226
 Co. Rep / Geo. Gary Gensch Rig Val #4
 Location: Sec. 18 Twp. 17s Rge. 34w Co. Scott State Ks

Interval Tested 4431 4447 Zone Tested Marmaton C
 Anchor Length 16 Drill Pipe Run 4380.5 Mud Wt. 9.2
 Top Packer Depth 4426 Drill Collars Run 28.5 Vis 50
 Bottom Packer Depth 4431 Wt. Pipe Run 0 WL 9.6
 Total Depth 4447 Chlorides 9300 ppm System LCM 1#

Blow Description 30 weak surface Blow Died in 5min
30 No Return
30 No Blw
30 No Return

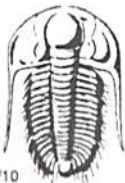
Rec	Feet of	%gas	%oil	%water	%mud
<u>5</u>	<u>mud with oil spots</u>				
Rec	Feet of	%gas	%oil	%water	%mud
Rec	Feet of	%gas	%oil	%water	%mud
Rec	Feet of	%gas	%oil	%water	%mud
Rec	Feet of	%gas	%oil	%water	%mud

Rec Total 5 BHT 1098 Gravity — API RW — @ — ° F Chlorides — ppm
 (A) Initial Hydrostatic 2252 Test 1250 T-On Location 22:25
 (B) First Initial Flow 15 Jars 250 T-Started 23:40
 (C) First Final Flow 20 Safety Joint 75 T-Open 2:22
 (D) Initial Shut-In 23 Circ Sub N/C T-Pulled 4:22
 (E) Second Initial Flow 19 Hourly Standby T-Out 6:31
 (F) Second Final Flow 21 Mileage 44 BT 68.20 Comments
 (G) Final Shut-In 25 Sampler Ruined Shale Packer
 (H) Final Hydrostatic 2039 Straddle Ruined Packer

Initial Open 30 Shale Packer Extra Copies
 Initial Shut-In 30 Extra Packer Sub Total 0
 Final Flow 30 Extra Recorder Total 1793.20
 Final Shut-In 30 Day Standby MP/DST Disc't
 Accessibility 150
 Sub Total 1793.20

Approved By Gary Gensch Our Representative [Signature]

Trilobite Testing Inc. shall not be liable for damaged of any kind of the property or personnel of the one for whom a test is made, or for any loss suffered or sustained, directly or indirectly, through the use of its equipment, or its statements or opinion concerning the results of any test, tools lost or damaged in the hole shall be paid for at cost by the party for whom the test is made.



TRILOBITE TESTING INC.

1515 Commerce Parkway • Hays, Kansas 67601

Test Ticket

NO. 59583

Well Name & No. Wilkinson #318 Test No. 4 Date 8/3/21
 Company Eagle Creek Corporation Elevation 3079 KB 3071 GL
 Address 1100 E 22nd St North Bldg 1500 Wichita, KS 67226
 Co. Rep / Geo. Gary Gersch Rig Vgl B4
 Location: Sec. 18 Twp. 17S Rge. 34W Co. Scott State KS

Interval Tested 4449-4464 Zone Tested Marmaton "D"
 Anchor Length 15' Drill Pipe Run 4410 Mud Wt. 9.2
 Top Packer Depth 4445 Drill Collars Run 30 Vis 78
 Bottom Packer Depth 4449 Wt. Pipe Run 0 WL 10.4
 Total Depth 4464 Chlorides 11000 ppm System LCM 1

Blow Description FF: Bob @ 10 min.
FSI: NO Return.
FF: Bob @ 34 min.
FSI: 5 1/4" Return.

Rec	Feet of	%gas	%oil	%water	%mud
<u>10</u>	<u>clean oil</u>	<u>100</u>			
<u>605</u>	<u>60mcw</u>	<u>5</u>	<u>5</u>	<u>85</u>	<u>5</u>
Rec	Feet of	%gas	%oil	%water	%mud
Rec	Feet of	%gas	%oil	%water	%mud

Rec Total 615 BHT _____ Gravity 21 API RW 174 @ 72 °F Chlorides 40,000 ppm

(A) Initial Hydrostatic 2210
 (B) First Initial Flow 33
 (C) First Final Flow 154
 (D) Initial Shut-In 332
 (E) Second Initial Flow 158
 (F) Second Final Flow 243
 (G) Final Shut-In 287
 (H) Final Hydrostatic 2061

Test _____
 Jars _____
 Safety Joint _____
 Circ Sub N/C
 Hourly Standby _____
 Mileage 44 R/T KR/T
 Sampler _____
 Straddle _____
 Shale Packer Gary called me @ 1800
 Extra Packer 8/4 and send H&I call me around 2300
 Extra Recorder 8/4 to lead
 Day Standby He didnt call until after 0200 8/5
 Accessibility Dont know if I charge
 Sub Total Standby work.

T-On Location 1500
 T-Started 1530
 T-Open 1734
 T-Pulled 21:20
 T-Out 0022

Comments Grassy: 23 @ 80 = 21
8/5 0630 24
loaded tools

Initial Open 30
 Initial Shut-In 45
 Final Flow 60
 Final Shut-In 90

Ruined Shale Packer _____
 Ruined Packer _____
 Extra Copies _____
 Sub Total _____
 Total _____
 MP/DST Disc't _____

Approved By _____ Our Representative [Signature]

Trilobite Testing Inc. shall not be liable for damaged of any kind of the property or personnel of the one for whom a test is made, or for any loss suffered or sustained, directly or indirectly, through the use of its equipment, or its statements or opinion concerning the results of any test, tools lost or damaged in the hole shall be paid for at cost by the party for whom the test is made.