



TRILOBITE TESTING, INC.

DRILL STEM TEST REPORT

Shakespeare Oil Co. Inc.

S3-13s-32w Logan, KS

202 W Main
Salem, IL 62881

Andersen #1-3

Job Ticket: 57451

DST#: 6

ATTN: Tim Priest

Test Start: 2014.08.15 @ 21:43:00

GENERAL INFORMATION:

Formation: **Myrick Station/Ft. S**

Deviated: No Whipstock: 0.00 ft (KB)

Time Tool Opened: 00:15:40

Time Test Ended: 03:53:00

Test Type: Conventional Bottom Hole (Reset)

Tester: Justin Harris

Unit No: 61

Interval: 4498.00 ft (KB) To 4554.00 ft (KB) (TVD)

Reference Elevations: 3045.00 ft (KB)

Total Depth: 4554.00 ft (KB) (TVD)

3035.00 ft (CF)

Hole Diameter: 7.88 inches Hole Condition: Poor

KB to GR/CF: 10.00 ft

Serial #: 8357

Inside

Press @ Run Depth: 25.98 psig @ 4500.00 ft (KB)

Capacity: 8000.00 psig

Start Date: 2014.08.15

End Date:

2014.08.16

Last Calib.:

2014.08.16

Start Time: 21:43:02

End Time:

03:53:00

Time On Btm:

2014.08.16 @ 00:15:30

Time Off Btm:

2014.08.16 @ 02:12:50

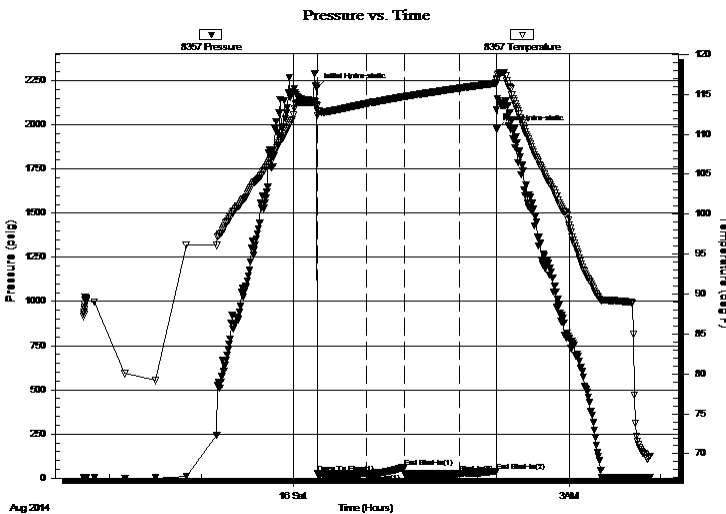
TEST COMMENT: 30: Weak surface blow died in 10 min.

30: No Return.

30: No Blow .

30: No Return.

PRESSURE SUMMARY



Time (Min.)	Pressure (psig)	Temp (deg F)	Annotation
0	2210.96	113.50	Initial Hydro-static
1	24.65	112.30	Open To Flow (1)
32	26.90	113.83	Shut-In(1)
57	62.09	114.72	End Shut-In(1)
57	23.47	114.70	Open To Flow (2)
93	25.98	115.77	Shut-In(2)
117	39.79	116.40	End Shut-In(2)
118	1975.37	116.89	Final Hydro-static

Recovery

Length (ft)	Description	Volume (bbl)
5.00	mud with oil spot	0.02

Gas Rates

Choke (inches)	Pressure (psig)	Gas Rate (Mcf/d)

* Recovery from multiple tests



**TRILOBITE
TESTING, INC.**

DRILL STEM TEST REPORT

FLUID SUMMARY

Shakespeare Oil Co. Inc.

S3-13s-32w Logan, KS

202 W Main
Salem, IL 62881

Andersen #1-3

Job Ticket: 57451

DST#: 6

ATTN: Tim Priest

Test Start: 2014.08.15 @ 21:43:00

Mud and Cushion Information

Mud Type: Gel Chem

Cushion Type:

Oil API:

0 deg API

Mud Weight: 9.00 lb/gal

Cushion Length:

ft

Water Salinity:

0 ppm

Viscosity: 48.00 sec/qt

Cushion Volume:

bbbl

Water Loss: 8.39 in³

Gas Cushion Type:

Resistivity: ohm.m

Gas Cushion Pressure:

psig

Salinity: 3500.00 ppm

Filter Cake: 1.00 inches

Recovery Information

Recovery Table

Length ft	Description	Volume bbl
5.00	mud with oil spot	0.025

Total Length: 5.00 ft Total Volume: 0.025 bbl

Num Fluid Samples: 0

Num Gas Bombs: 0

Serial #:

Laboratory Name:

Laboratory Location:

Recovery Comments:

